

## Line 01 Level 3-6

Junior Suite

INTERIOR

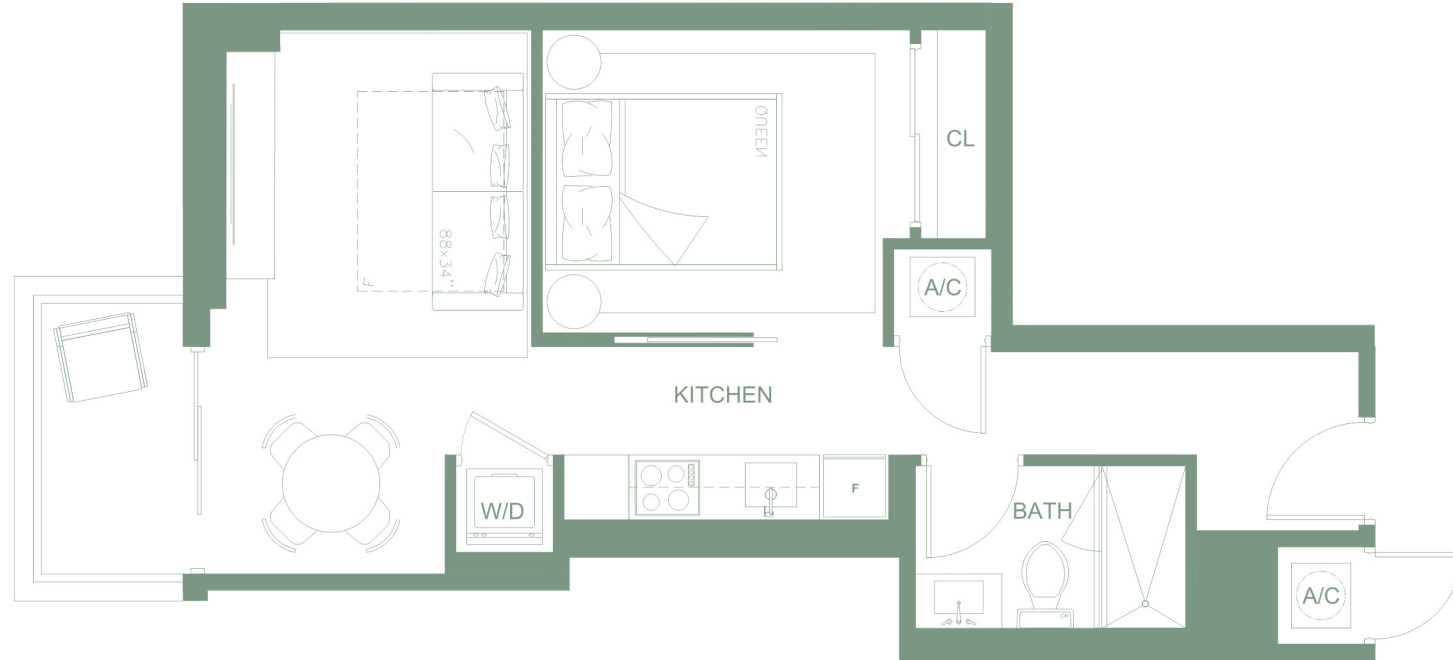
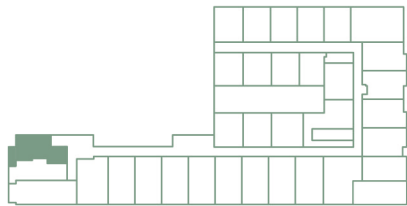
501 SF | 47 M2

BALCONY

36 SF | 3 M2

TOTAL AREA

488 SF | 50 M2



# PARKSIDE

RESIDENCES AT BRICKELL

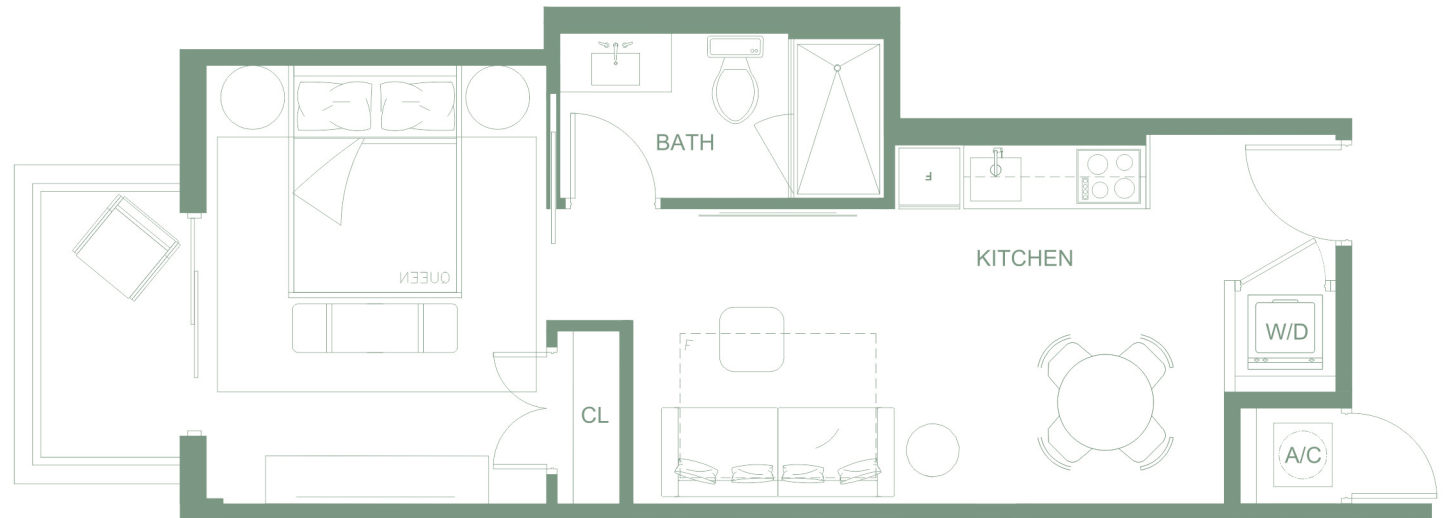
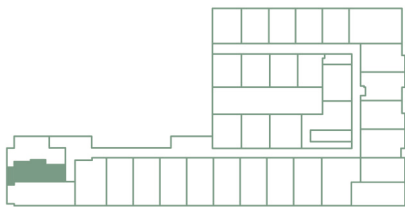
## Line 02 Level 3-6

Junior

INTERIOR  
472 SF | 44 M2

BALCONY  
36 SF | 3 M2

TOTAL AREA  
472 SF | 47 M2



🏠 Oral representations cannot be relied upon as correctly stating the representations of the developer. for correct representations, make reference to this brochure and the documents required by section 718.503, florida statutes, to be furnished by a developer to a buyer or lessee. the above drawings are conceptual only and are subject to change without notice at the discretion of the developer. the developer reserves the right to make additions, deletions and modifications to the drawings as the developer may deem appropriate or desirable. dimensions and square footages are approximate and may vary with actual construction.

## Line 03 Level 3-6

Junior 1B / 1B

INTERIOR

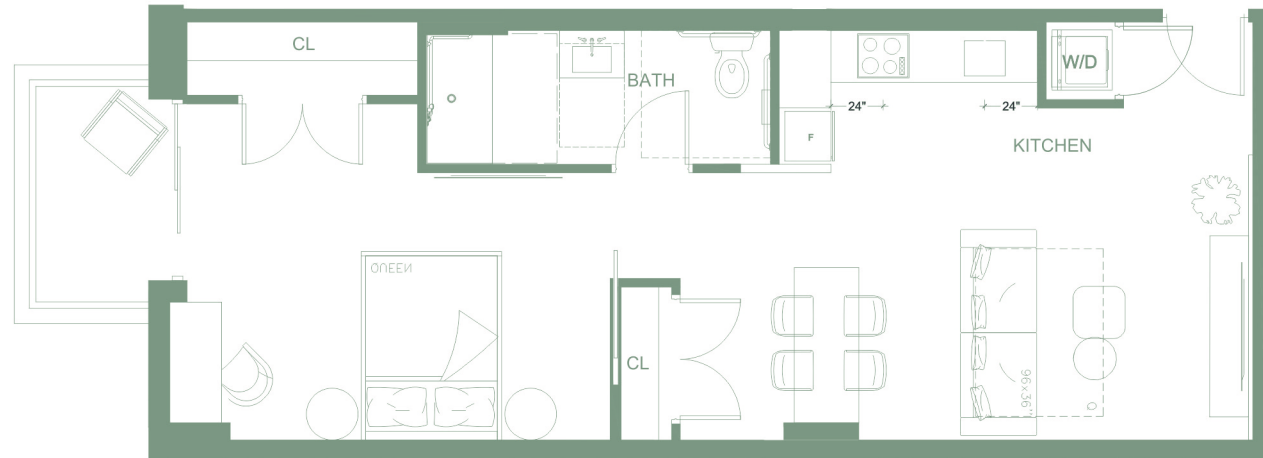
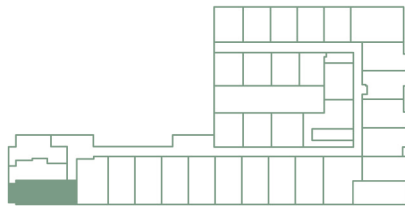
672 SF | 62 M2

BALCONY

36 SF | 3 M2

TOTAL AREA

683 SF | 65 M2

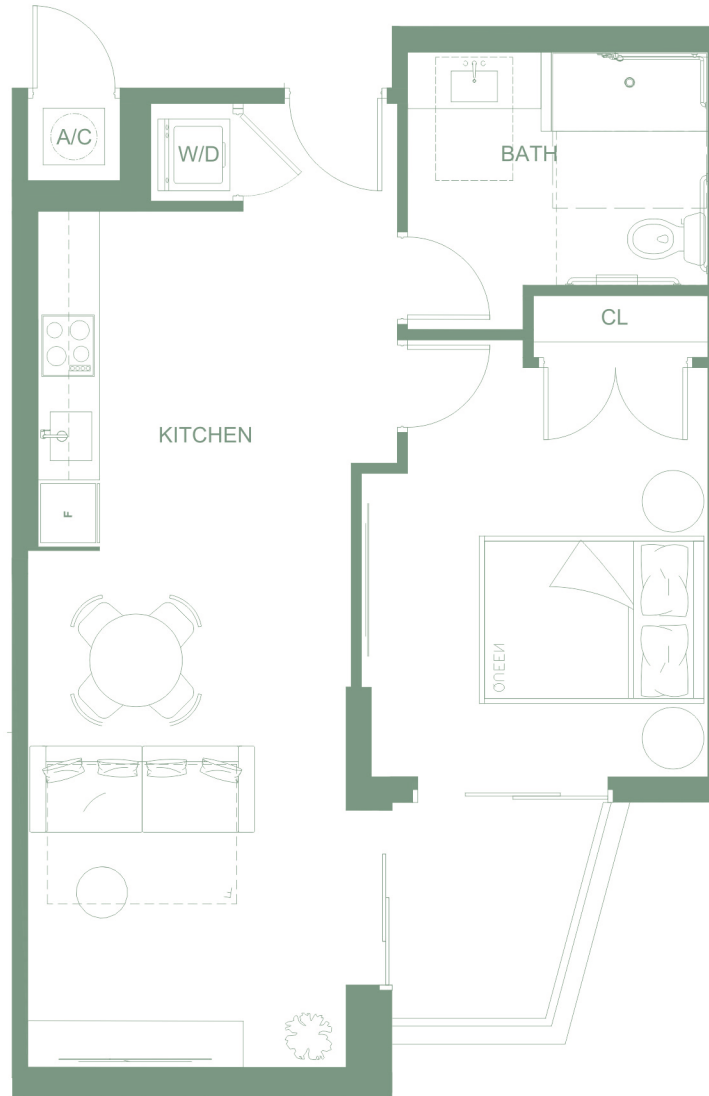
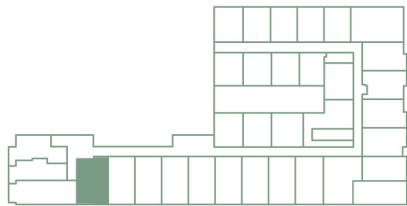


## Line 04 Level 3-6

1B / 1B

Type L-04  
606 sq ft

Interior: 56 m2  
Balcony: 4 m2  
Total Area: 60 m2



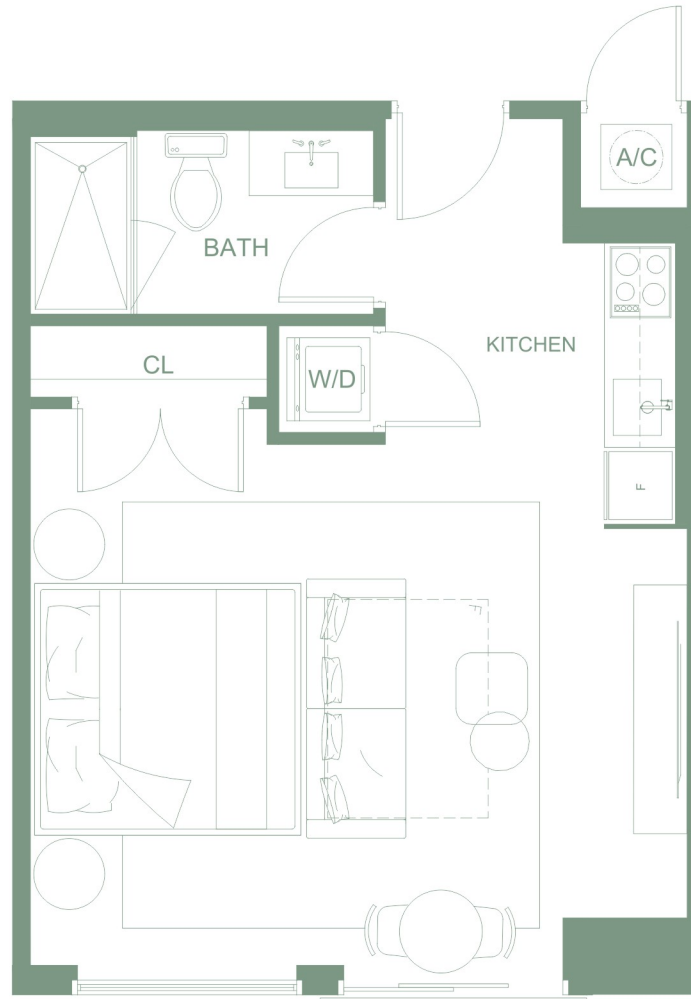
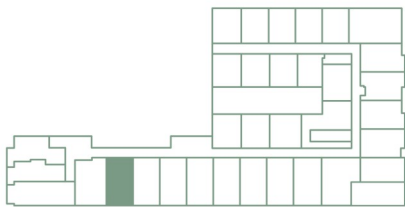
# PARKSIDE

RESIDENCES AT BRICKELL

## Line 05 Level 3-6

Studio

TOTAL AREA  
440 SF | 41 M2



🏠 Oral representations cannot be relied upon as correctly stating the representations of the developer. For correct representations, make reference to this brochure and the documents required by section 718.503, Florida Statutes, to be furnished by a developer to a buyer or lessee. The above drawings are conceptual only and are subject to change without notice at the discretion of the developer. The developer reserves the right to make additions, deletions and modifications to the drawings as the developer may deem appropriate or desirable. Dimensions and square footages are approximate and may vary with actual construction.

# PARKSIDE

RESIDENCES AT BRICKELL

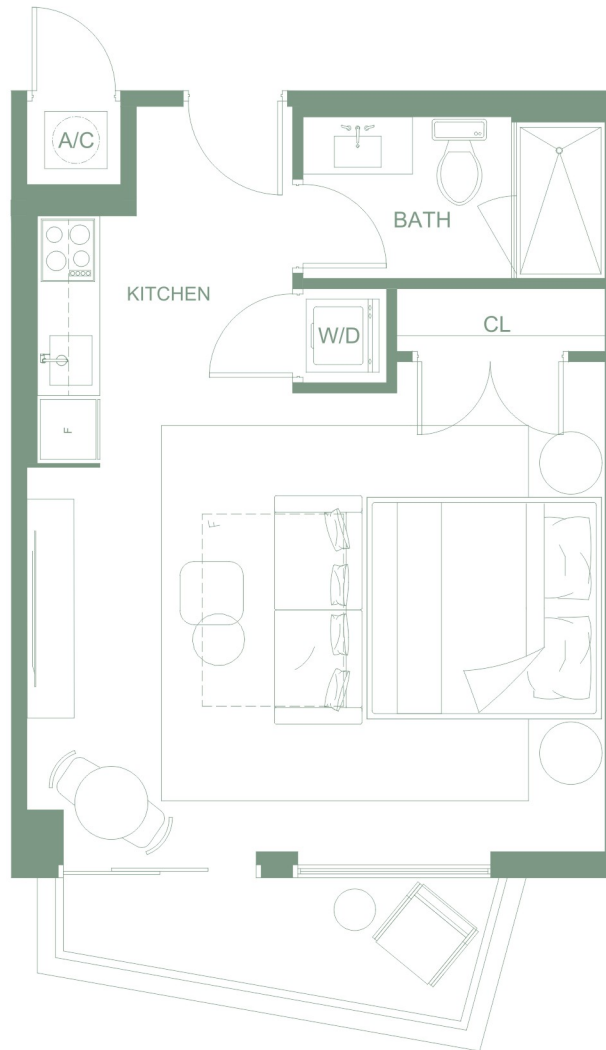
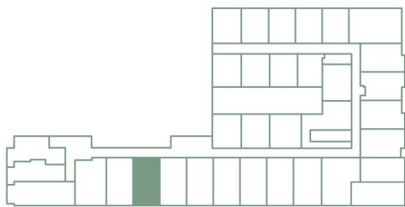
## Line 06 Level 3-6

Studio

INTERIOR  
440 SF | 41 M2

BALCONY  
47 SF | 4 M2

TOTAL AREA  
487 SF | 45 M2



🏠 Oral representations cannot be relied upon as correctly stating the representations of the developer. For correct representations, make reference to this brochure and the documents required by section 718.503, Florida Statutes, to be furnished by a developer to a buyer or lessee. The above drawings are conceptual only and are subject to change without notice at the discretion of the developer. The developer reserves the right to make additions, deletions and modifications to the drawings as the developer may deem appropriate or desirable. Dimensions and square footages are approximate and may vary with actual construction.

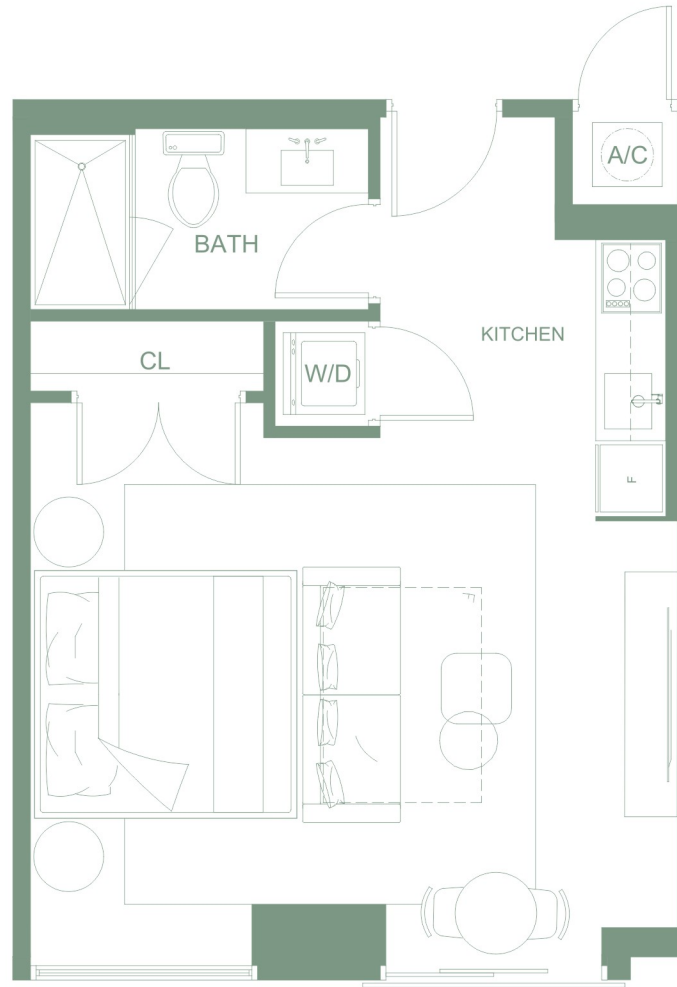
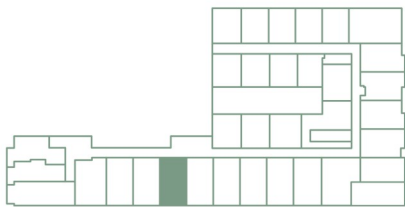
# PARKSIDE

RESIDENCES AT BRICKELL

## Line 07 Level 3-6

Studio

TOTAL AREA  
440 SF | 41 M2



🏠 Oral representations cannot be relied upon as correctly stating the representations of the developer. For correct representations, make reference to this brochure and the documents required by section 718.503, Florida Statutes, to be furnished by a developer to a buyer or lessee. The above drawings are conceptual only and are subject to change without notice at the discretion of the developer. The developer reserves the right to make additions, deletions and modifications to the drawings as the developer may deem appropriate or desirable. Dimensions and square footages are approximate and may vary with actual construction.

# PARKSIDE

RESIDENCES AT BRICKELL

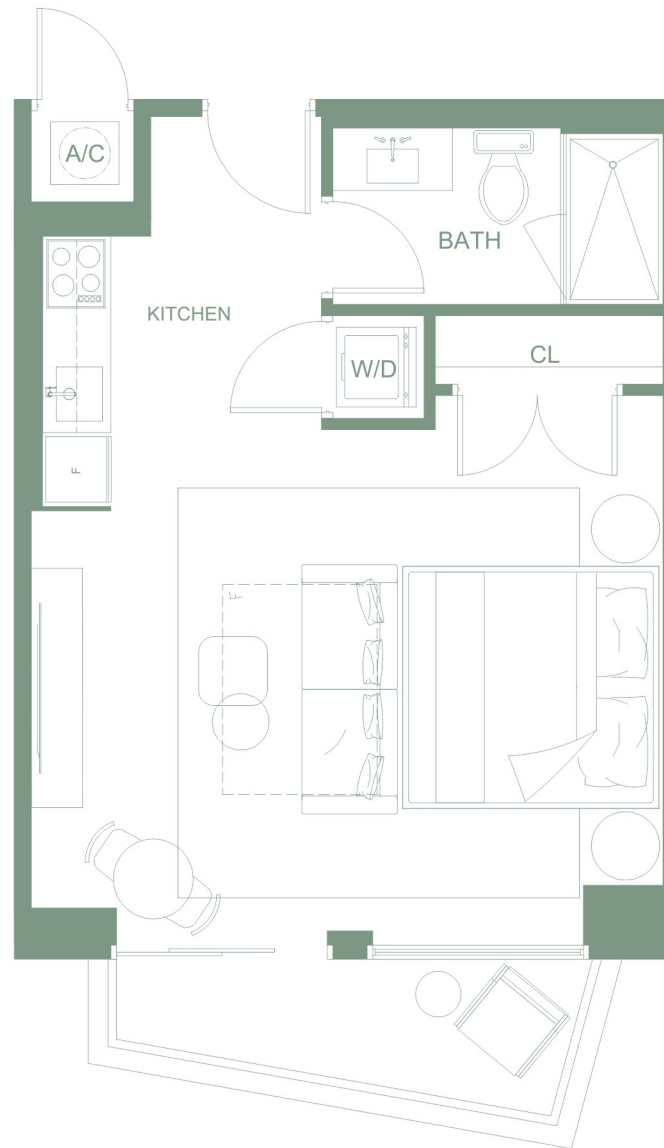
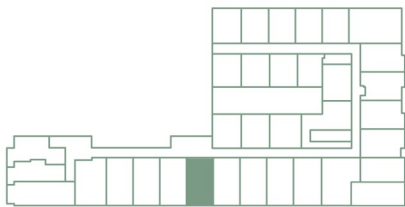
## Line 08 Level 3-6

Studio

INTERIOR  
440 SF | 41 M2

BALCONY  
47 SF | 4 M2

TOTAL AREA  
487 SF | 45 M2



🏠 Oral representations cannot be relied upon as correctly stating the representations of the developer. For correct representations, make reference to this brochure and the documents required by section 718.503, Florida Statutes, to be furnished by a developer to a buyer or lessee. The above drawings are conceptual only and are subject to change without notice at the discretion of the developer. The developer reserves the right to make additions, deletions and modifications to the drawings as the developer may deem appropriate or desirable. Dimensions and square footages are approximate and may vary with actual construction.

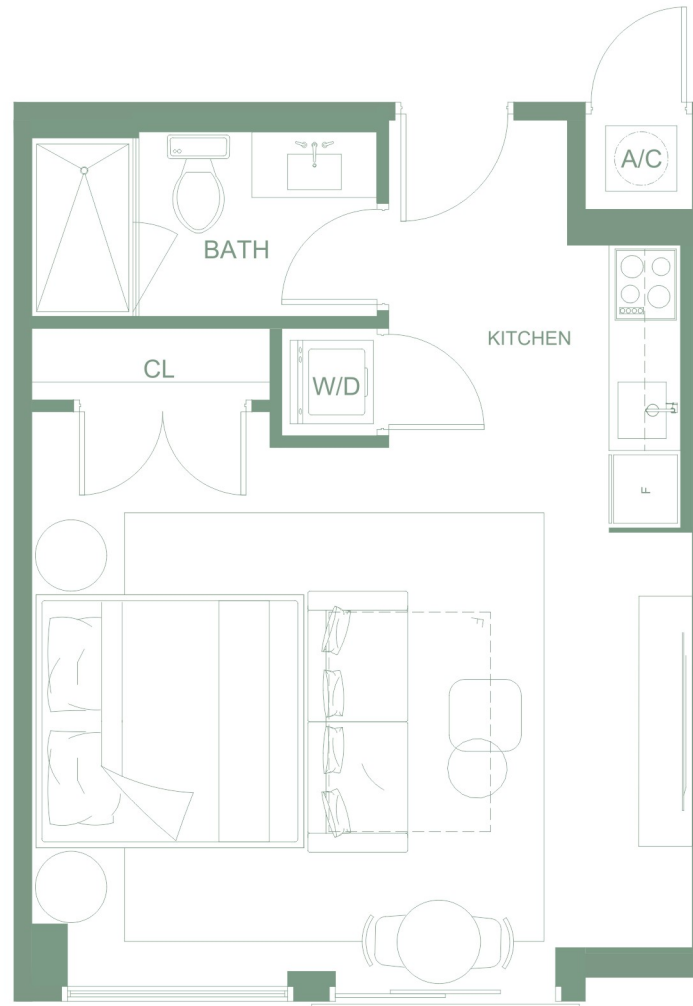
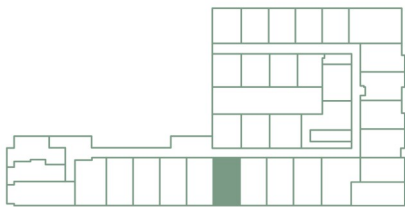
# PARKSIDE

RESIDENCES AT BRICKELL

## Line 09 Level 3-6

Studio

TOTAL AREA  
440 SF | 41 M2



Oral representations cannot be relied upon as correctly stating the representations of the developer. For correct representations, make reference to this brochure and the documents required by section 718.503, Florida Statutes, to be furnished by a developer to a buyer or lessee. The above drawings are conceptual only and are subject to change without notice at the discretion of the developer. The developer reserves the right to make additions, deletions and modifications to the drawings as the developer may deem appropriate or desirable. Dimensions and square footages are approximate and may vary with actual construction.

# PARKSIDE

RESIDENCES AT BRICKELL

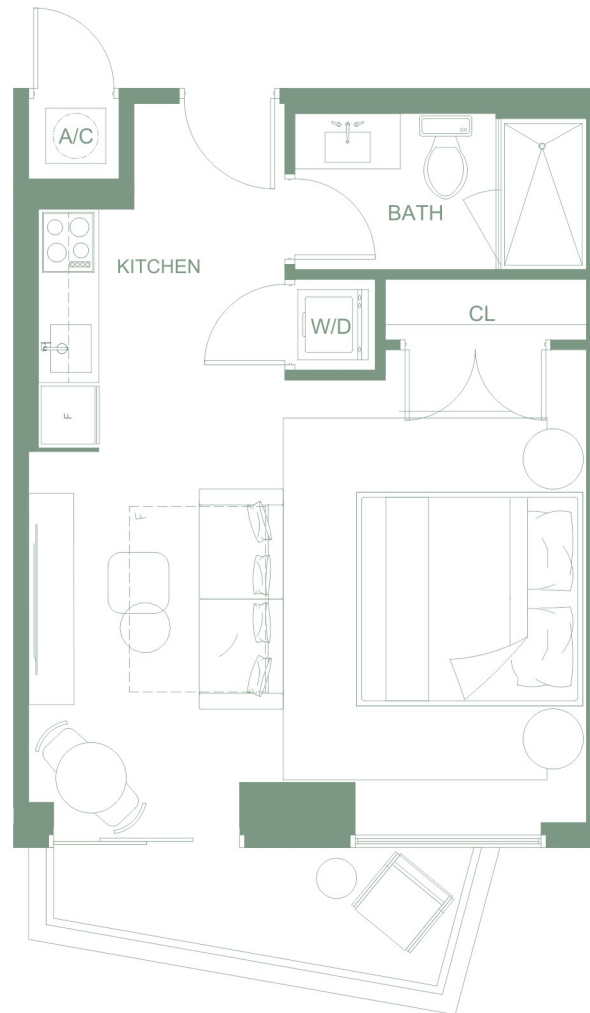
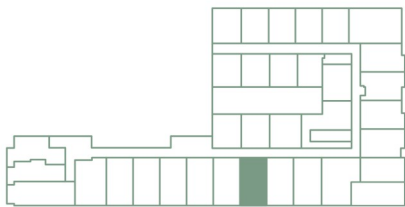
## Line 10 Level 3-6

Studio

INTERIOR  
440 SF | 41 M2

BALCONY  
47 SF | 4 M2

TOTAL AREA  
487 SF | 45 M2



🏠 Oral representations cannot be relied upon as correctly stating the representations of the developer. For correct representations, make reference to this brochure and the documents required by section 718.503, Florida Statutes, to be furnished by a developer to a buyer or lessee. The above drawings are conceptual only and are subject to change without notice at the discretion of the developer. The developer reserves the right to make additions, deletions and modifications to the drawings as the developer may deem appropriate or desirable. Dimensions and square footages are approximate and may vary with actual construction.

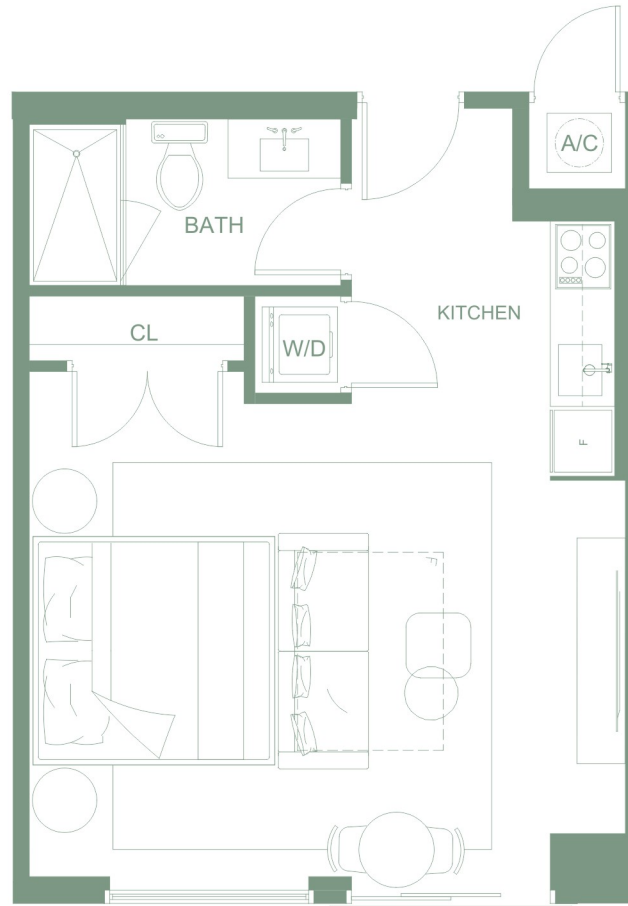
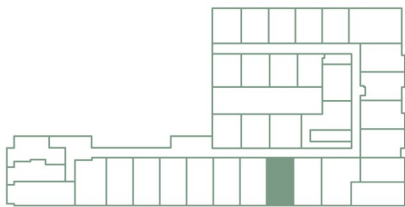
# PARKSIDE

RESIDENCES AT BRICKELL

## Line 11 Level 3-6

Studio

TOTAL AREA  
440 SF | 41 M2



Oral representations cannot be relied upon as correctly stating the representations of the developer. For correct representations, make reference to this brochure and the documents required by section 718.503, Florida Statutes, to be furnished by a developer to a buyer or lessee. The above drawings are conceptual only and are subject to change without notice at the discretion of the developer. The developer reserves the right to make additions, deletions and modifications to the drawings as the developer may deem appropriate or desirable. Dimensions and square footages are approximate and may vary with actual construction.

# PARKSIDE

RESIDENCES AT BRICKELL

## Line 12 Level 3-6

Studio

INTERIOR

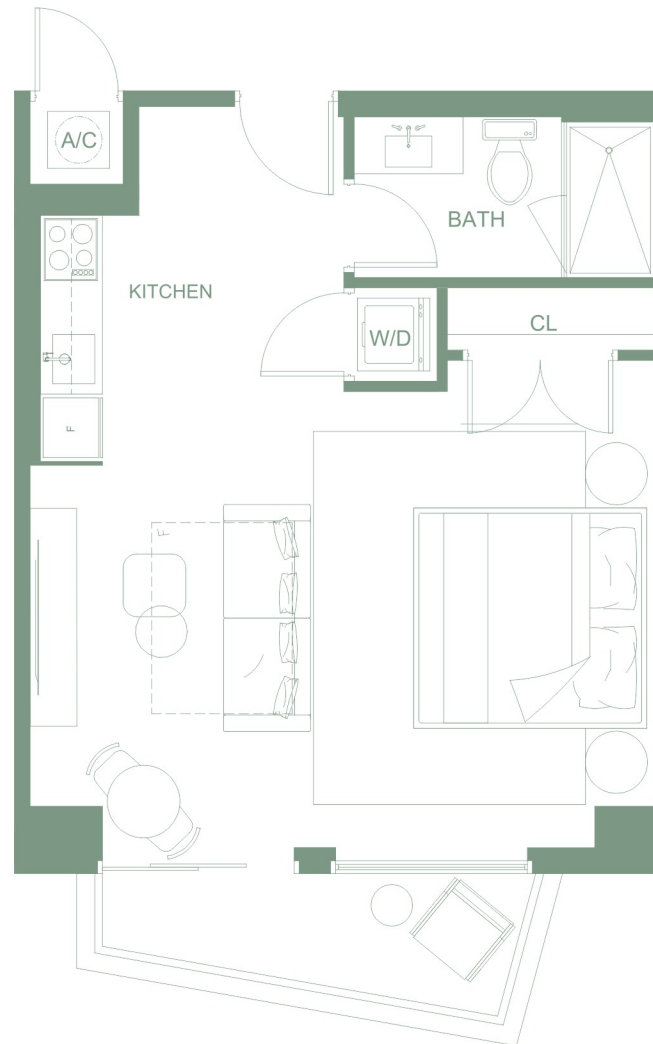
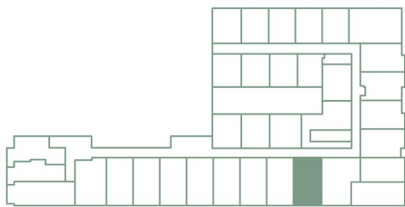
476 SF | 44 M2

BALCONY

47 SF | 4 M2

TOTAL AREA

523 SF | 48 M2



🏠 Oral representations cannot be relied upon as correctly stating the representations of the developer. For correct representations, make reference to this brochure and the documents required by section 718.503, Florida Statutes, to be furnished by a developer to a buyer or lessee. The above drawings are conceptual only and are subject to change without notice at the discretion of the developer. The developer reserves the right to make additions, deletions and modifications to the drawings as the developer may deem appropriate or desirable. Dimensions and square footages are approximate and may vary with actual construction.

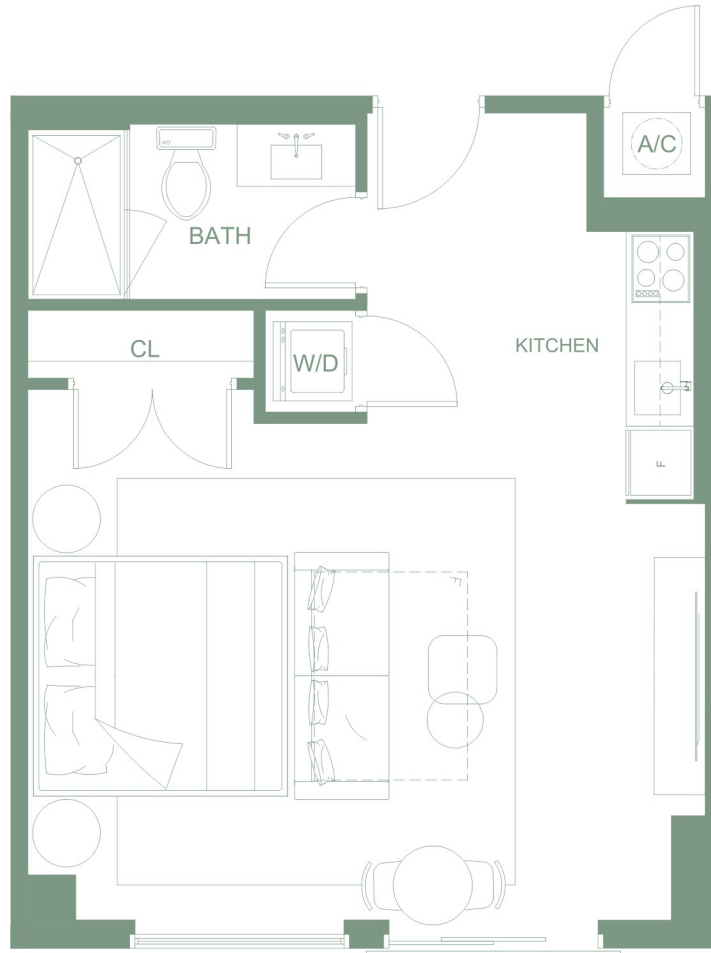
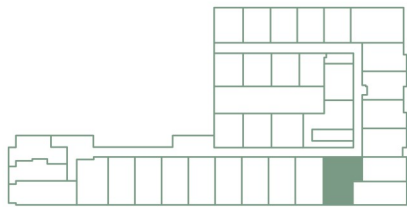
# PARKSIDE

RESIDENCES AT BRICKELL

## Line 13 Level 3-6

Studio

TOTAL AREA  
476 SF | 44 M2



Oral representations cannot be relied upon as correctly stating the representations of the developer. For correct representations, make reference to this brochure and the documents required by section 718.503, Florida Statutes, to be furnished by a developer to a buyer or lessee. The above drawings are conceptual only and are subject to change without notice at the discretion of the developer. The developer reserves the right to make additions, deletions and modifications to the drawings as the developer may deem appropriate or desirable. Dimensions and square footages are approximate and may vary with actual construction.

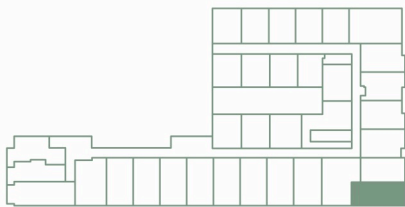
# PARKSIDE

RESIDENCES AT BRICKELL

## Line 14 Level 3-6

Junior Suite

TOTAL AREA  
586 SF | 54 M2



🏠 Oral representations cannot be relied upon as correctly stating the representations of the developer. For correct representations, make reference to this brochure and the documents required by section 718.503, Florida Statutes, to be furnished by a developer to a buyer or lessee. The above drawings are conceptual only and are subject to change without notice at the discretion of the developer. The developer reserves the right to make additions, deletions and modifications to the drawings as the developer may deem appropriate or desirable. Dimensions and square footages are approximate and may vary with actual construction.

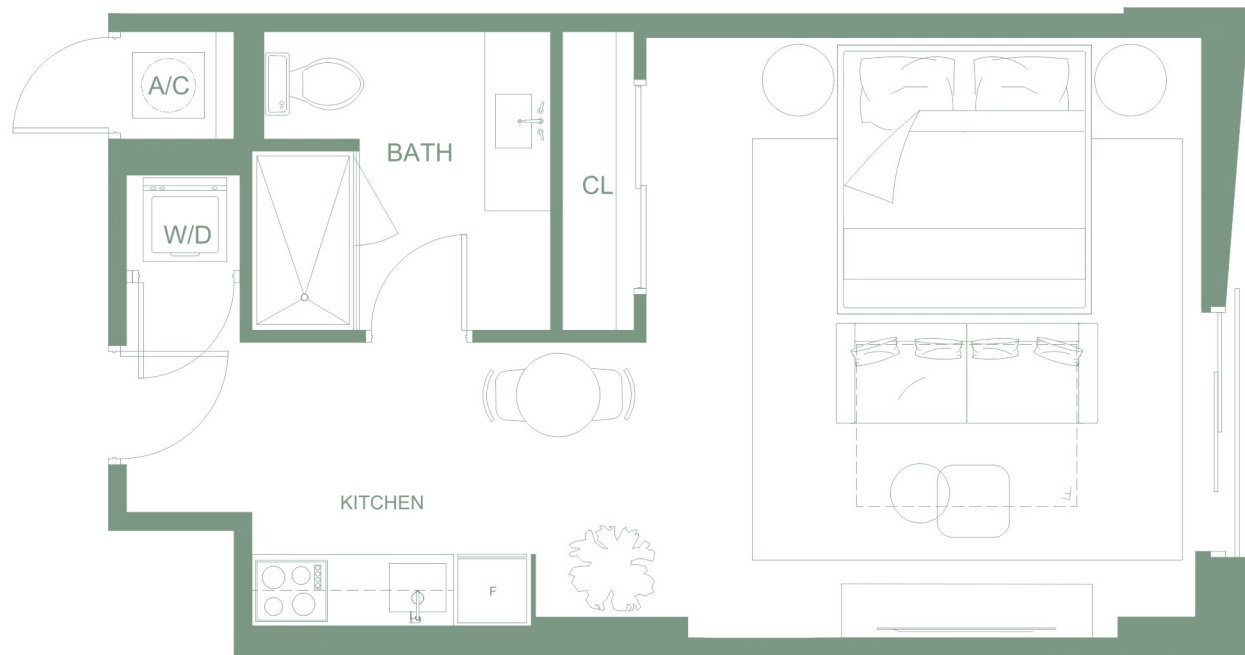
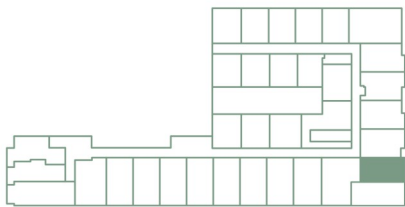
# PARKSIDE

RESIDENCES AT BRICKELL

## Line 15 Level 3-6

Studio

TOTAL AREA  
493 SF | 46 M2



Oral representations cannot be relied upon as correctly stating the representations of the developer. For correct representations, make reference to this brochure and the documents required by section 718.503, Florida Statutes, to be furnished by a developer to a buyer or lessee. The above drawings are conceptual only and are subject to change without notice at the discretion of the developer. The developer reserves the right to make additions, deletions and modifications to the drawings as the developer may deem appropriate or desirable. Dimensions and square footages are approximate and may vary with actual construction.

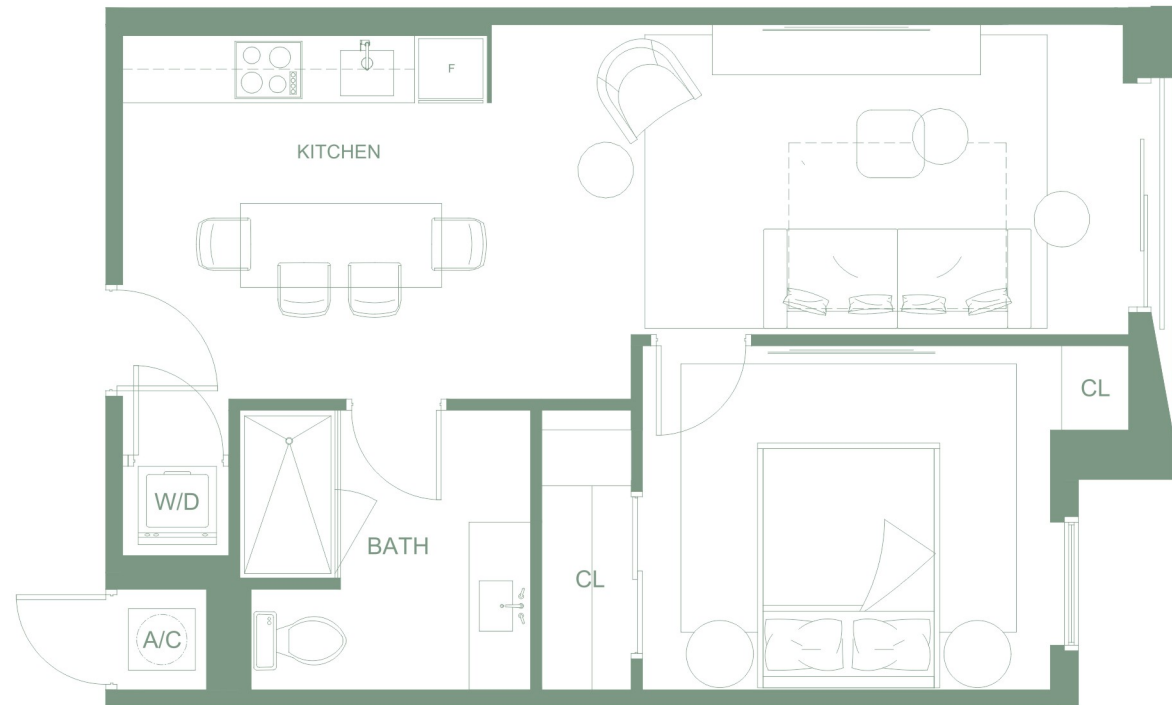
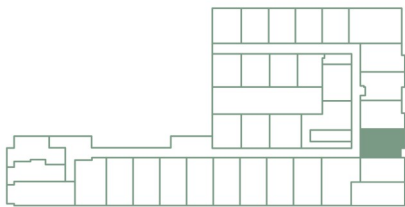
# PARKSIDE

RESIDENCES AT BRICKELL

## Line 16 Level 3-6

1B / 1B

TOTAL AREA  
579 SF | 54 M2



🏠 Oral representations cannot be relied upon as correctly stating the representations of the developer. For correct representations, make reference to this brochure and the documents required by section 718.503, Florida Statutes, to be furnished by a developer to a buyer or lessee. The above drawings are conceptual only and are subject to change without notice at the discretion of the developer. The developer reserves the right to make additions, deletions and modifications to the drawings as the developer may deem appropriate or desirable. Dimensions and square footages are approximate and may vary with actual construction.

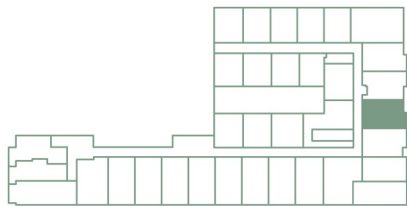
# PARKSIDE

RESIDENCES AT BRICKELL

## Line 17 Level 3-6

1B / 1B

TOTAL AREA  
551 SF | 51 M2



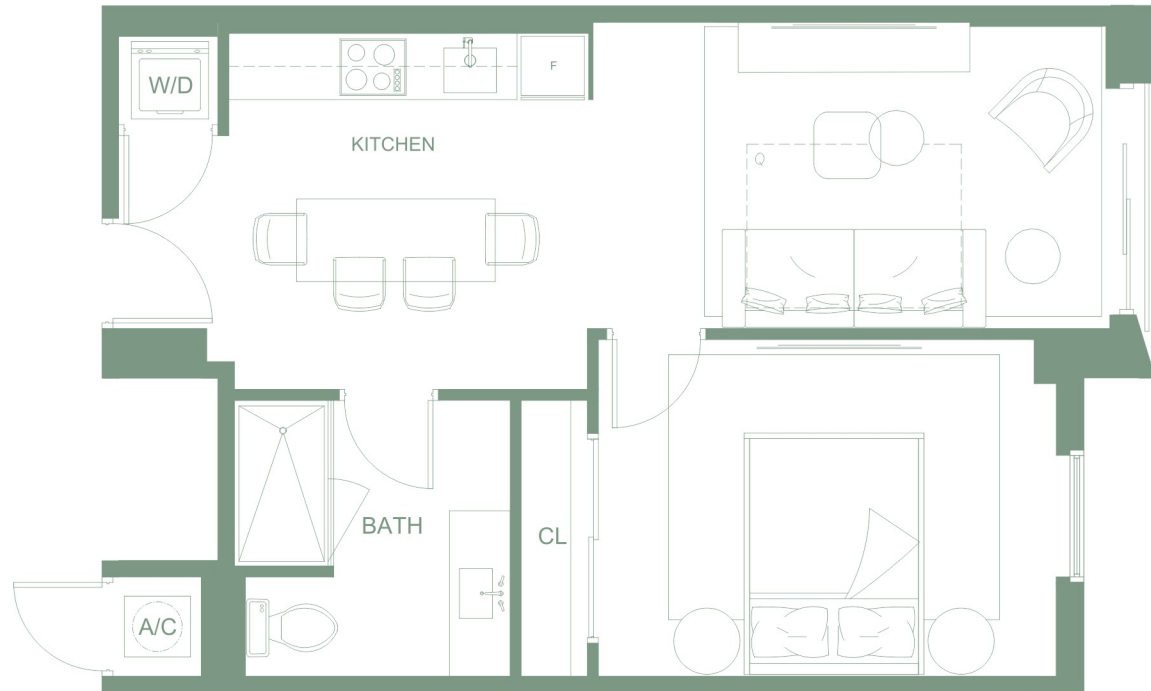
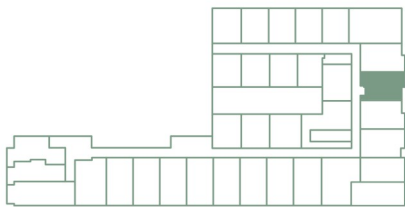
# PARKSIDE

RESIDENCES AT BRICKELL

## Line 18 Level 3-6

1B / 1B

TOTAL AREA  
551 SF | 51 M2



🏠 Oral representations cannot be relied upon as correctly stating the representations of the developer. For correct representations, make reference to this brochure and the documents required by section 718.503, Florida Statutes, to be furnished by a developer to a buyer or lessee. The above drawings are conceptual only and are subject to change without notice at the discretion of the developer. The developer reserves the right to make additions, deletions and modifications to the drawings as the developer may deem appropriate or desirable. Dimensions and square footages are approximate and may vary with actual construction.

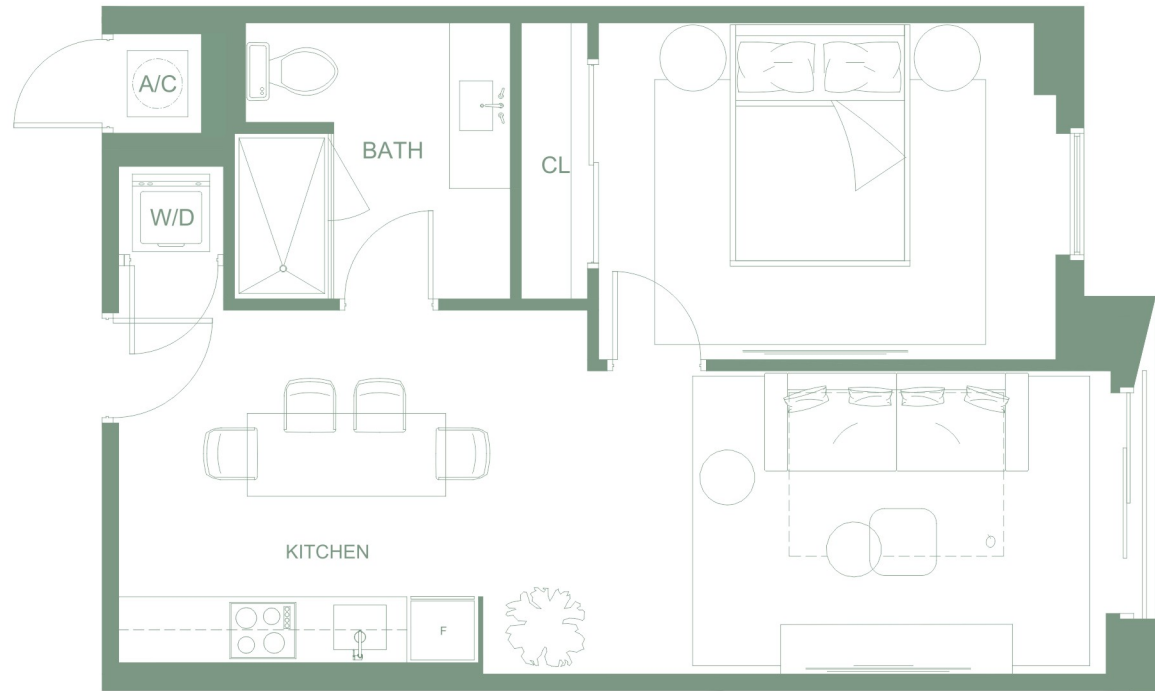
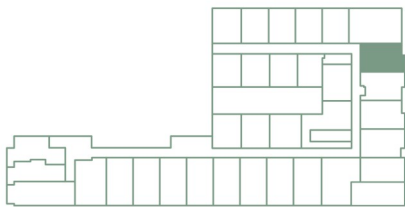
# PARKSIDE

RESIDENCES AT BRICKELL

## Line 19 Level 3-6

1B / 1B

TOTAL AREA  
575 SF | 53 M2



🏠 Oral representations cannot be relied upon as correctly stating the representations of the developer. For correct representations, make reference to this brochure and the documents required by section 718.503, Florida Statutes, to be furnished by a developer to a buyer or lessee. The above drawings are conceptual only and are subject to change without notice at the discretion of the developer. The developer reserves the right to make additions, deletions and modifications to the drawings as the developer may deem appropriate or desirable. Dimensions and square footages are approximate and may vary with actual construction.

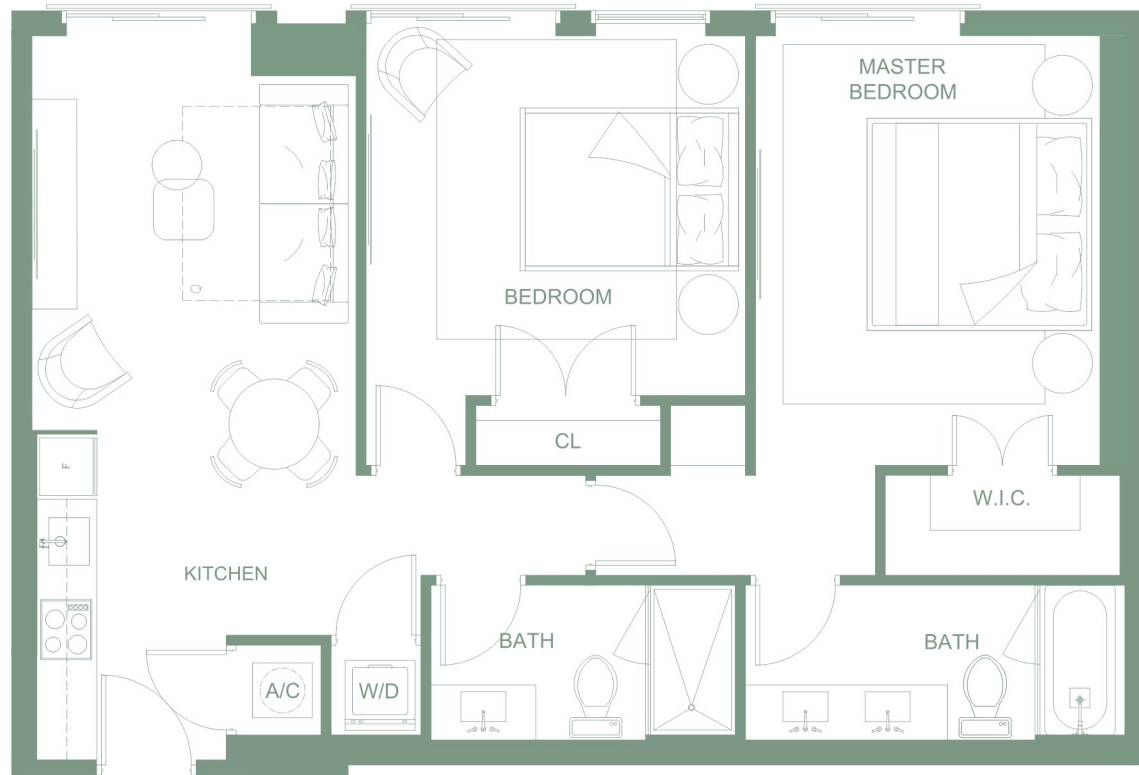
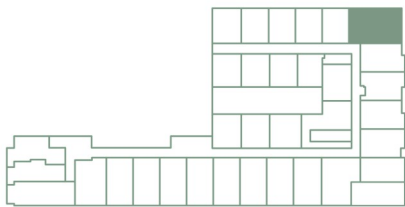
# PARKSIDE

RESIDENCES AT BRICKELL

## Line 20 Level 3-6

2 Bed / 2 Bath

TOTAL AREA  
874 SF | 81 M2



🏠 Oral representations cannot be relied upon as correctly stating the representations of the developer. For correct representations, make reference to this brochure and the documents required by section 718.503, Florida Statutes, to be furnished by a developer to a buyer or lessee. The above drawings are conceptual only and are subject to change without notice at the discretion of the developer. The developer reserves the right to make additions, deletions and modifications to the drawings as the developer may deem appropriate or desirable. Dimensions and square footages are approximate and may vary with actual construction.

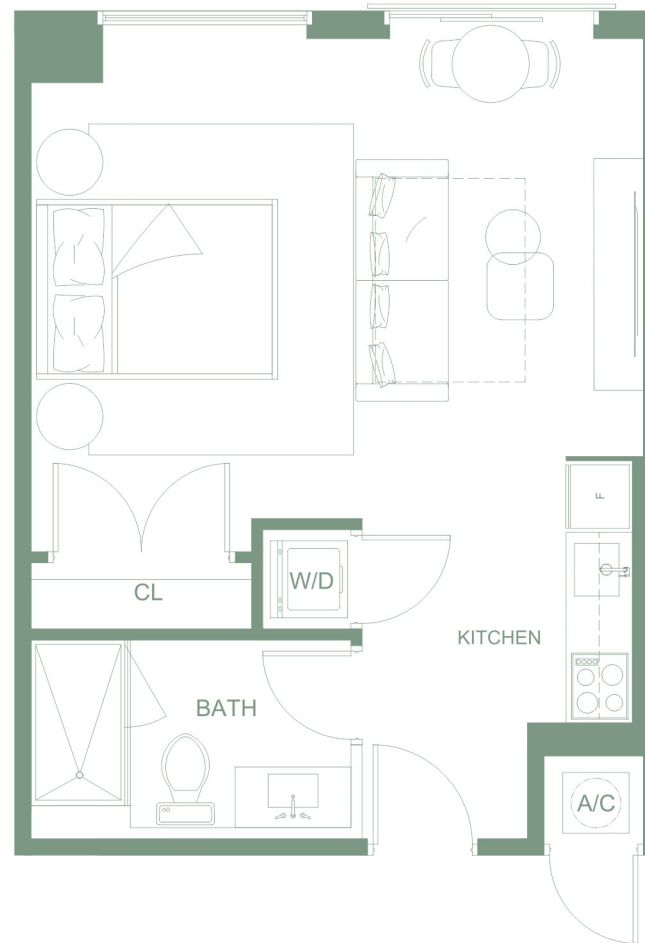
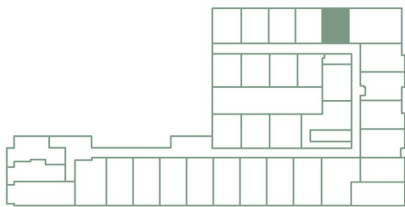
# PARKSIDE

RESIDENCES AT BRICKELL

## Line 21 Level 3-6

Studio

TOTAL AREA  
446 SF | 41 M2



🏠 Oral representations cannot be relied upon as correctly stating the representations of the developer. For correct representations, make reference to this brochure and the documents required by section 718.503, Florida Statutes, to be furnished by a developer to a buyer or lessee. The above drawings are conceptual only and are subject to change without notice at the discretion of the developer. The developer reserves the right to make additions, deletions and modifications to the drawings as the developer may deem appropriate or desirable. Dimensions and square footages are approximate and may vary with actual construction.

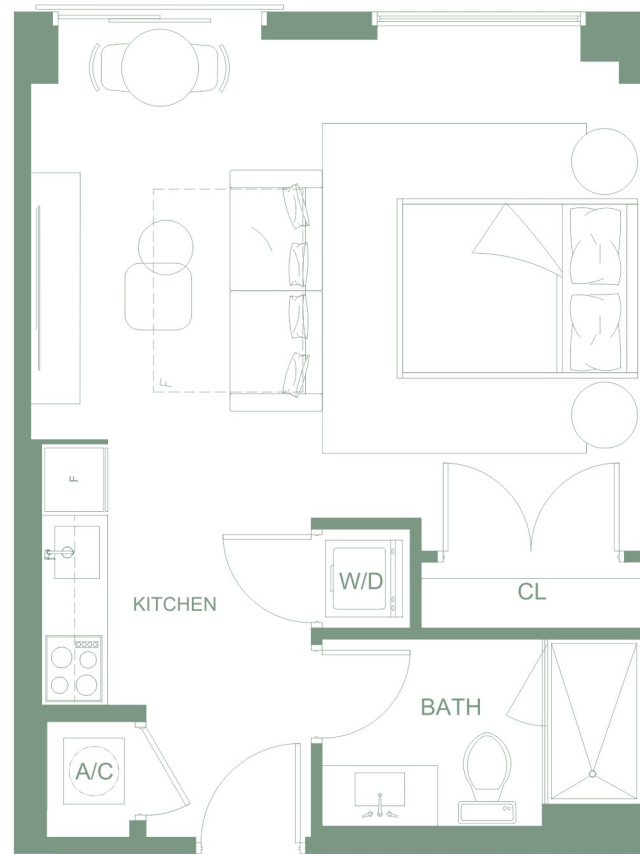
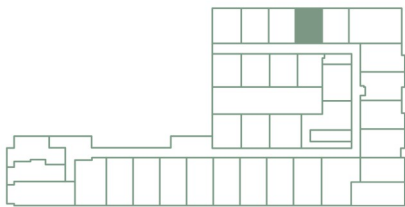
# PARKSIDE

RESIDENCES AT BRICKELL

## Line 22 Level 3-6

Studio

TOTAL AREA  
446 SF | 41 M2



🏠 Oral representations cannot be relied upon as correctly stating the representations of the developer. For correct representations, make reference to this brochure and the documents required by section 718.503, Florida Statutes, to be furnished by a developer to a buyer or lessee. The above drawings are conceptual only and are subject to change without notice at the discretion of the developer. The developer reserves the right to make additions, deletions and modifications to the drawings as the developer may deem appropriate or desirable. Dimensions and square footages are approximate and may vary with actual construction.

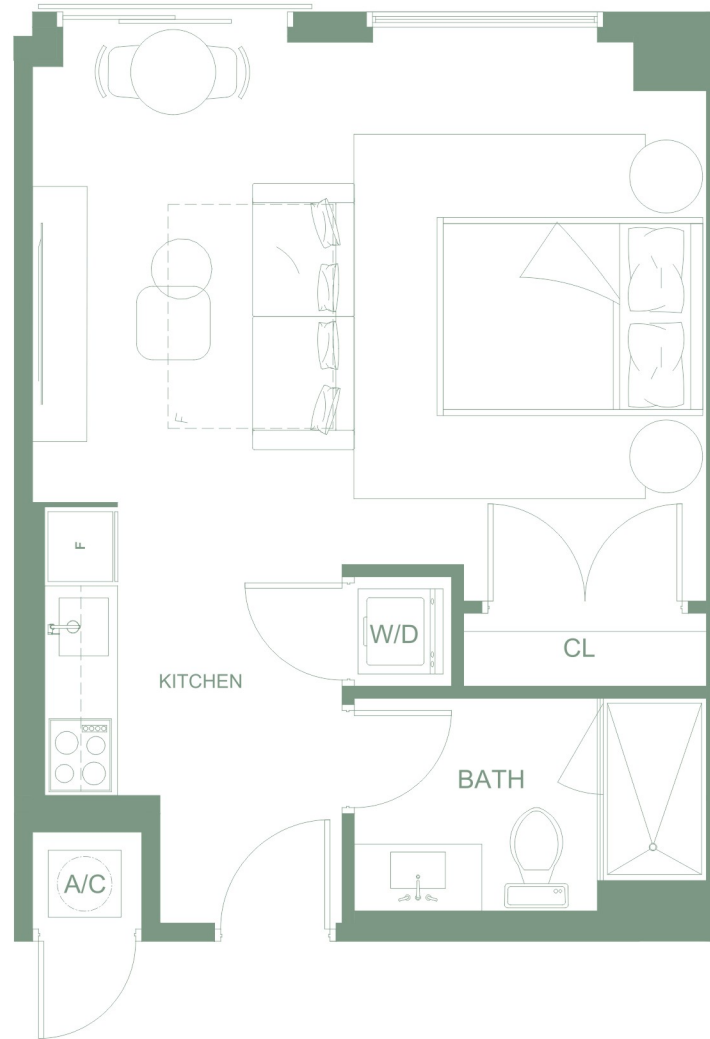
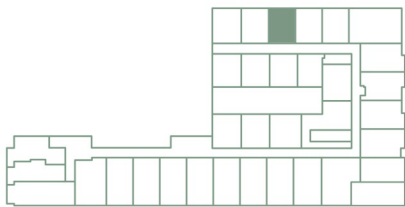
# PARKSIDE

RESIDENCES AT BRICKELL

## Line 23 Level 3-6

Studio

TOTAL AREA  
446 SF | 41 M2



🏠 Oral representations cannot be relied upon as correctly stating the representations of the developer. For correct representations, make reference to this brochure and the documents required by section 718.503, Florida Statutes, to be furnished by a developer to a buyer or lessee. The above drawings are conceptual only and are subject to change without notice at the discretion of the developer. The developer reserves the right to make additions, deletions and modifications to the drawings as the developer may deem appropriate or desirable. Dimensions and square footages are approximate and may vary with actual construction.

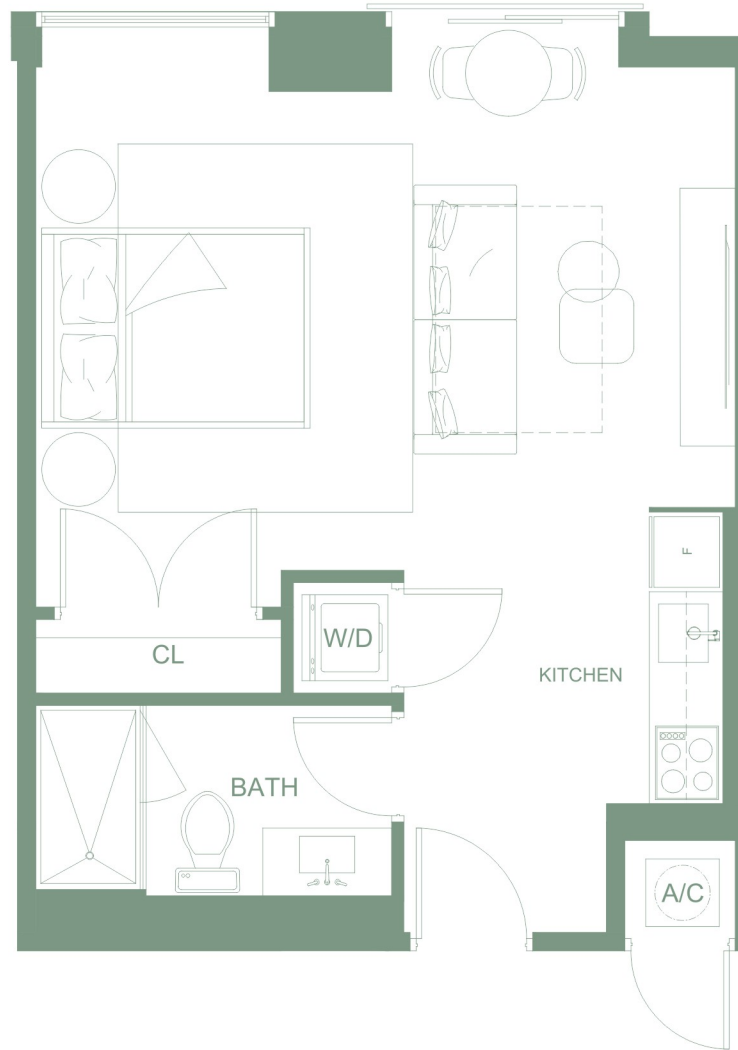
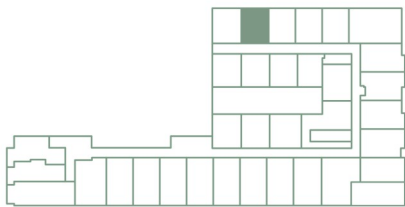
# PARKSIDE

RESIDENCES AT BRICKELL

## Line 24 Level 3-6

Studio

TOTAL AREA  
454 SF | 42 M2



🏠 Oral representations cannot be relied upon as correctly stating the representations of the developer. For correct representations, make reference to this brochure and the documents required by section 718.503, Florida Statutes, to be furnished by a developer to a buyer or lessee. The above drawings are conceptual only and are subject to change without notice at the discretion of the developer. The developer reserves the right to make additions, deletions and modifications to the drawings as the developer may deem appropriate or desirable. Dimensions and square footages are approximate and may vary with actual construction.

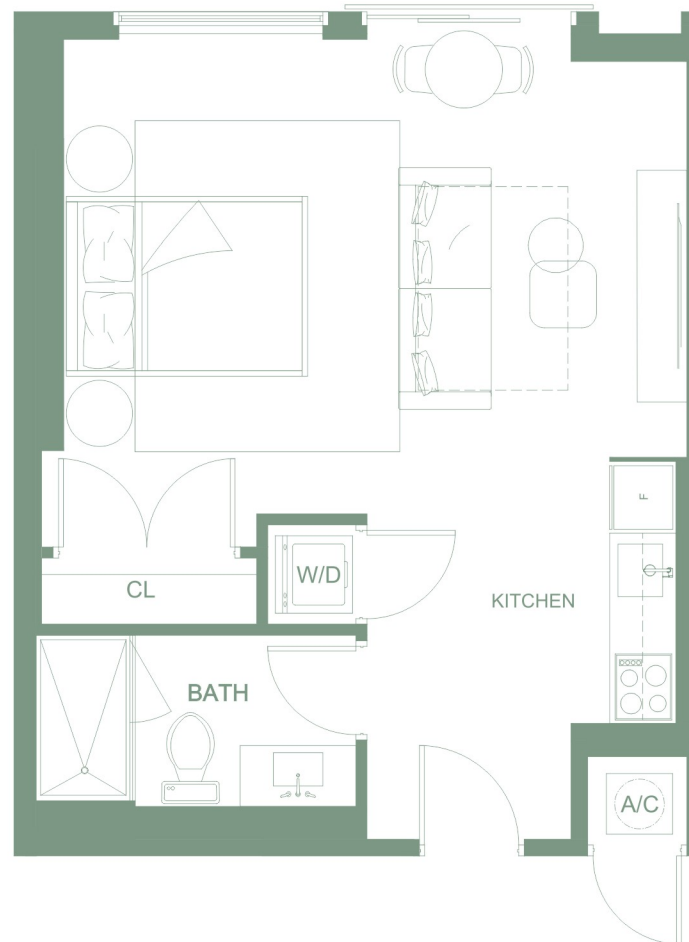
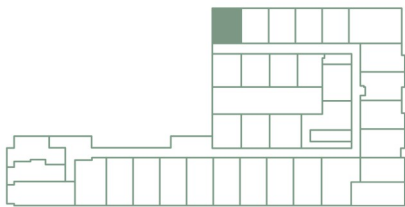
# PARKSIDE

RESIDENCES AT BRICKELL

## Line 25 Level 3-6

Studio

TOTAL AREA  
471 SF | 44 M2



🏠 Oral representations cannot be relied upon as correctly stating the representations of the developer. For correct representations, make reference to this brochure and the documents required by section 718.503, Florida Statutes, to be furnished by a developer to a buyer or lessee. The above drawings are conceptual only and are subject to change without notice at the discretion of the developer. The developer reserves the right to make additions, deletions and modifications to the drawings as the developer may deem appropriate or desirable. Dimensions and square footages are approximate and may vary with actual construction.

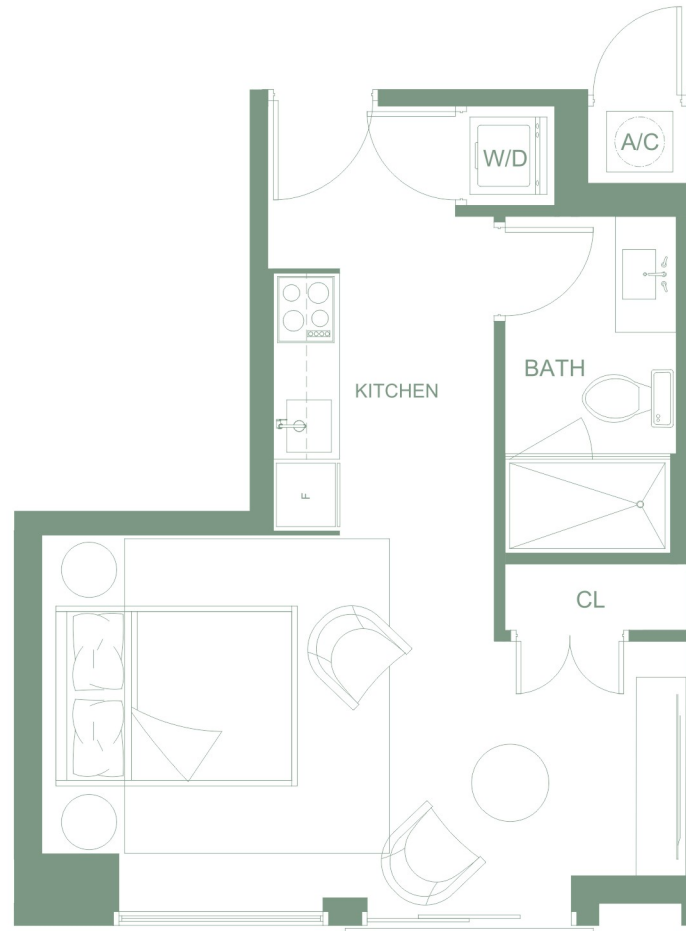
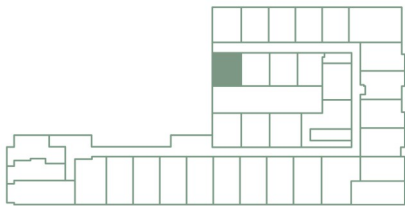
# PARKSIDE

RESIDENCES AT BRICKELL

## Line 26 Level 3-6

Studio

TOTAL AREA  
381 SF | 35 M2



Oral representations cannot be relied upon as correctly stating the representations of the developer. For correct representations, make reference to this brochure and the documents required by section 718.503, Florida Statutes, to be furnished by a developer to a buyer or lessee. The above drawings are conceptual only and are subject to change without notice at the discretion of the developer. The developer reserves the right to make additions, deletions and modifications to the drawings as the developer may deem appropriate or desirable. Dimensions and square footages are approximate and may vary with actual construction.

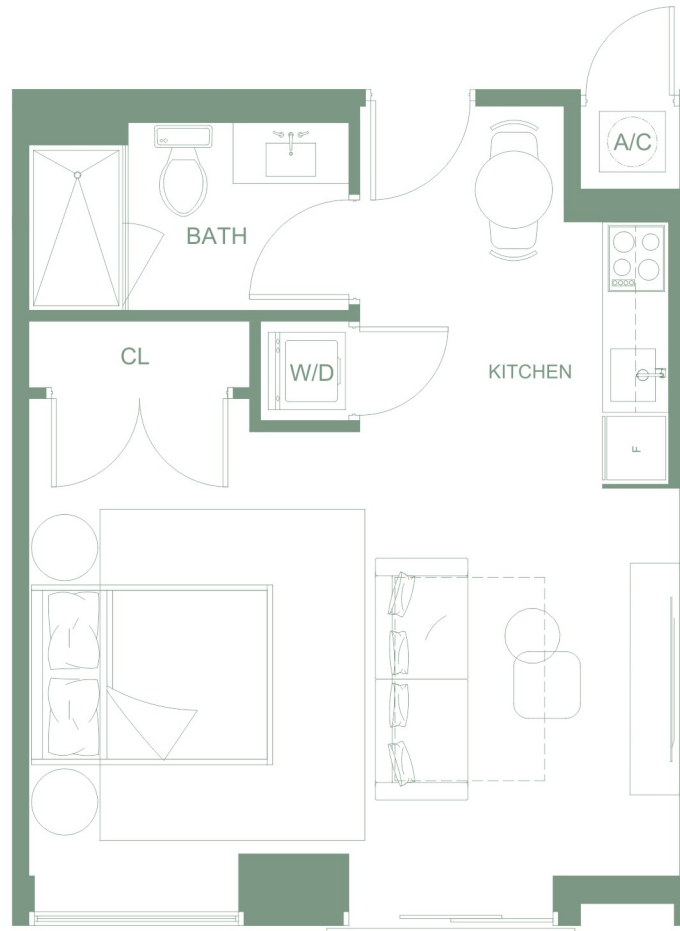
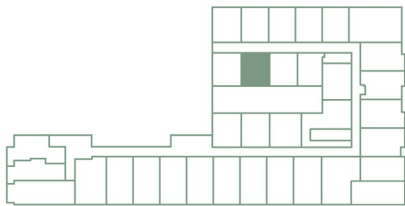
# PARKSIDE

RESIDENCES AT BRICKELL

## Line 27 Level 3-6

Studio

TOTAL AREA  
467 SF | 43 M2



Oral representations cannot be relied upon as correctly stating the representations of the developer. For correct representations, make reference to this brochure and the documents required by section 718.503, Florida Statutes, to be furnished by a developer to a buyer or lessee. The above drawings are conceptual only and are subject to change without notice at the discretion of the developer. The developer reserves the right to make additions, deletions and modifications to the drawings as the developer may deem appropriate or desirable. Dimensions and square footages are approximate and may vary with actual construction.

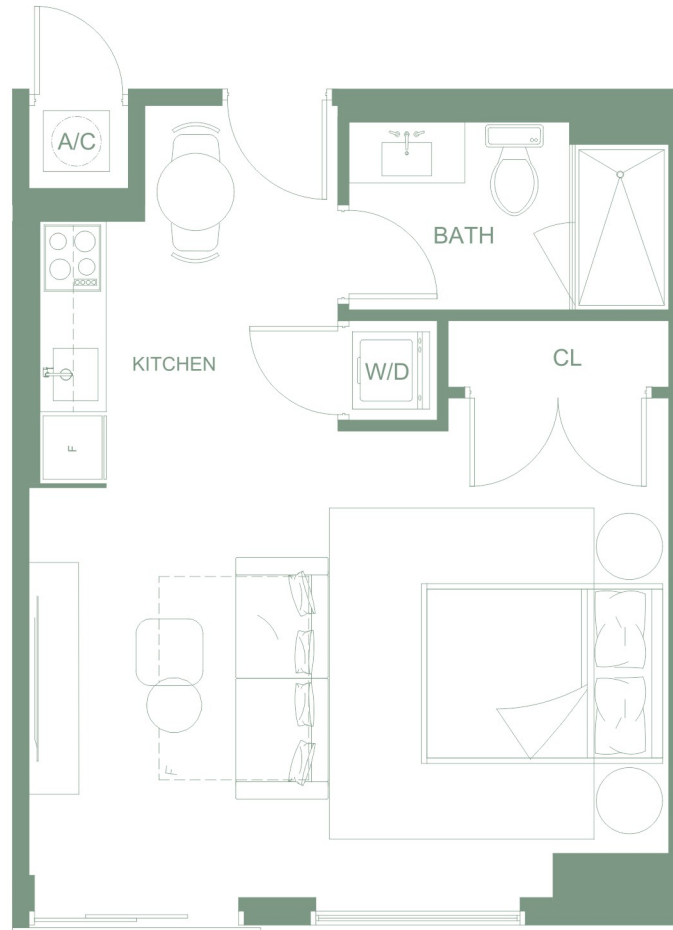
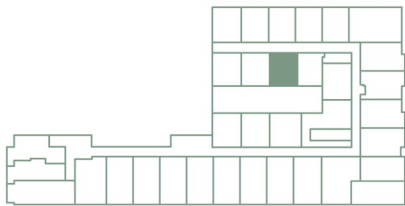
# PARKSIDE

RESIDENCES AT BRICKELL

## Line 28 Level 3-6

Studio

TOTAL AREA  
461 SF | 43 M2



🏠 Oral representations cannot be relied upon as correctly stating the representations of the developer. For correct representations, make reference to this brochure and the documents required by section 718.503, Florida Statutes, to be furnished by a developer to a buyer or lessee. The above drawings are conceptual only and are subject to change without notice at the discretion of the developer. The developer reserves the right to make additions, deletions and modifications to the drawings as the developer may deem appropriate or desirable. Dimensions and square footages are approximate and may vary with actual construction.

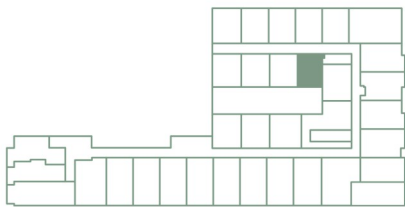
# PARKSIDE

RESIDENCES AT BRICKELL

## Line 29 Level 3-6

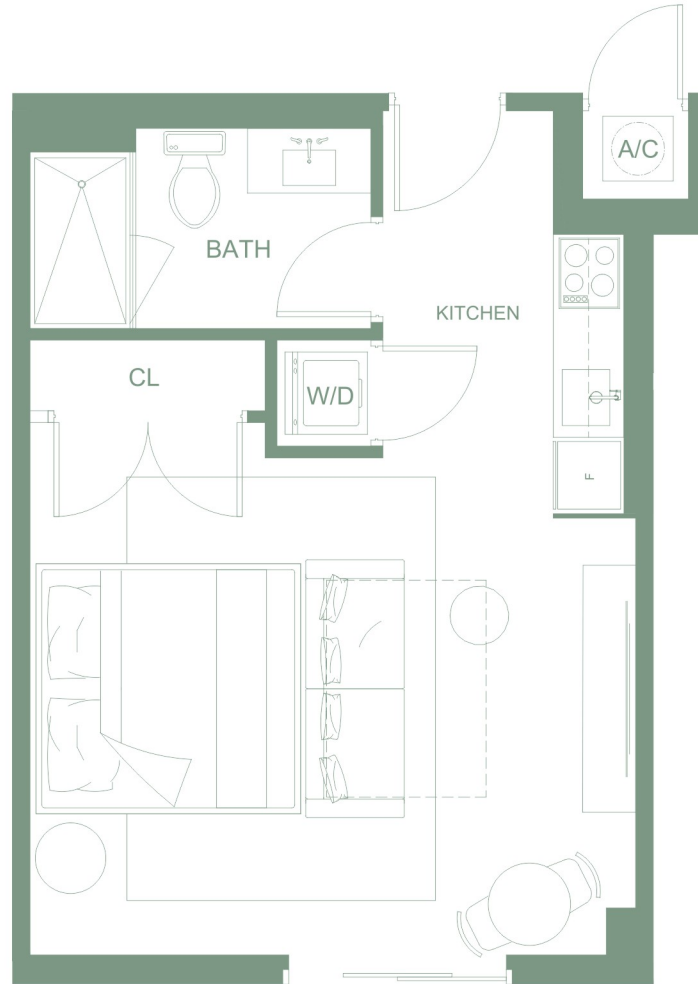
Studio

TOTAL AREA  
417 SF | 39 M2



**BI GROUP** USA

**KOBI KARP**  
ARCHITECTS



🏠 Oral representations cannot be relied upon as correctly stating the representations of the developer. For correct representations, make reference to this brochure and the documents required by section 718.503, Florida Statutes, to be furnished by a developer to a buyer or lessee. The above drawings are conceptual only and are subject to change without notice at the discretion of the developer. The developer reserves the right to make additions, deletions and modifications to the drawings as the developer may deem appropriate or desirable. Dimensions and square footages are approximate and may vary with actual construction.

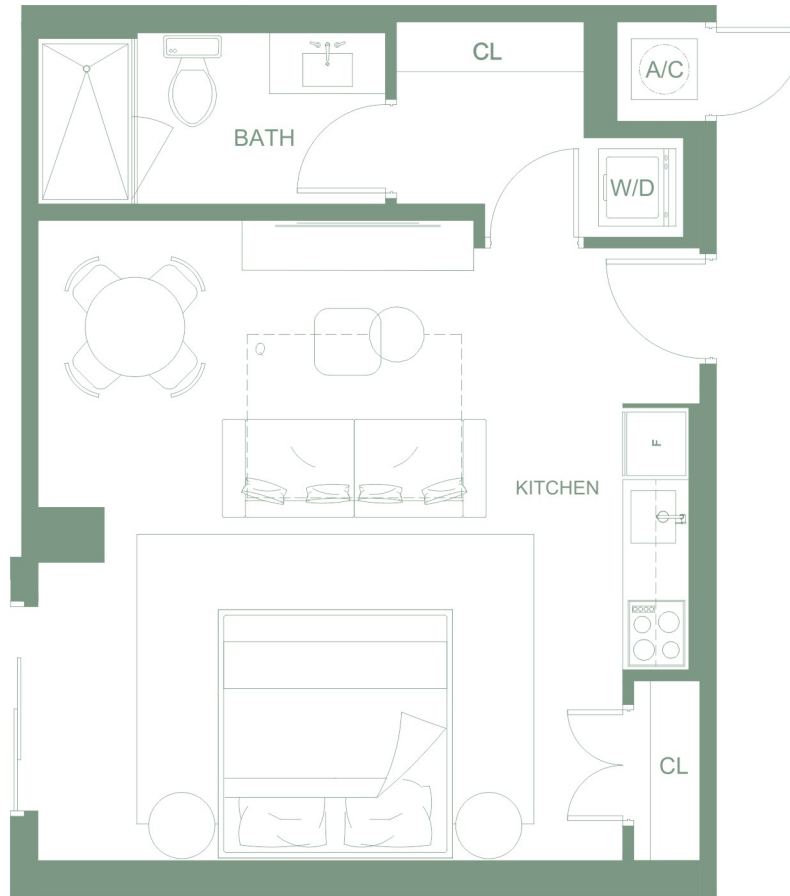
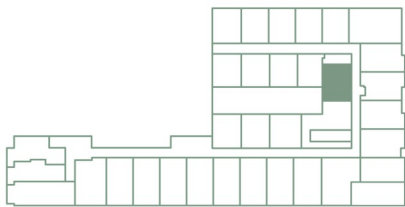
# PARKSIDE

RESIDENCES AT BRICKELL

## Line 30 Level 3-6

Studio

TOTAL AREA  
509 SF | 47 M2



🏠 Oral representations cannot be relied upon as correctly stating the representations of the developer. For correct representations, make reference to this brochure and the documents required by section 718.503, Florida Statutes, to be furnished by a developer to a buyer or lessee. The above drawings are conceptual only and are subject to change without notice at the discretion of the developer. The developer reserves the right to make additions, deletions and modifications to the drawings as the developer may deem appropriate or desirable. Dimensions and square footages are approximate and may vary with actual construction.

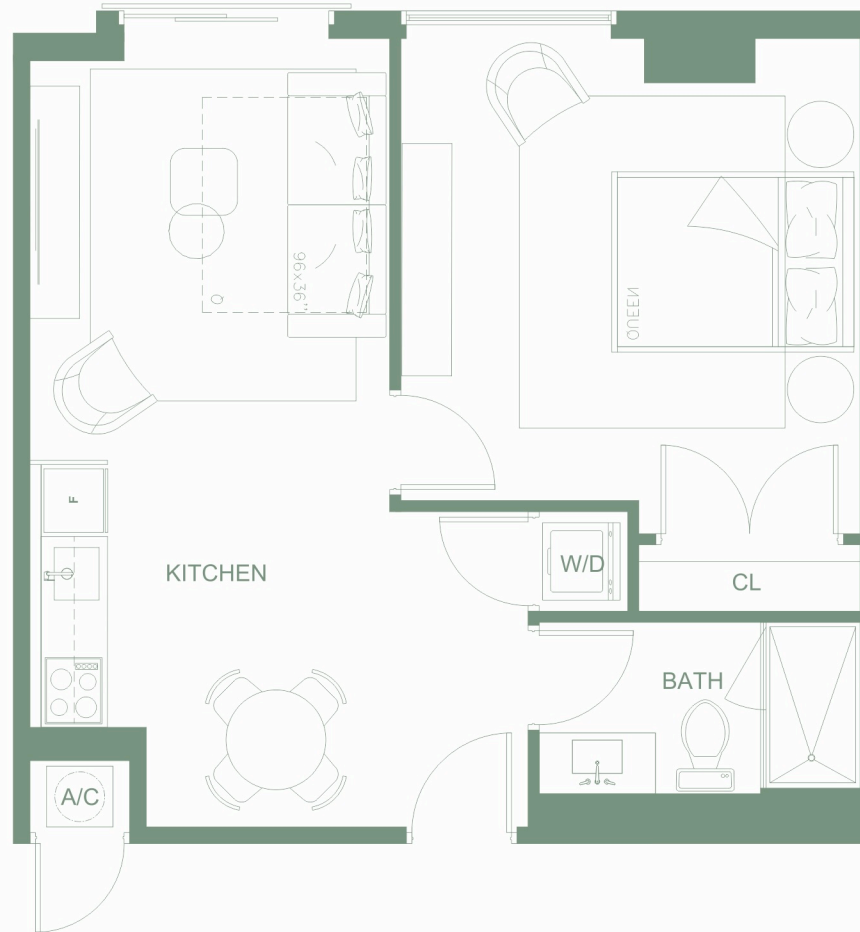
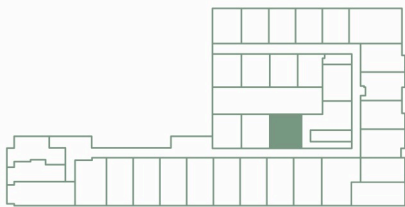
# PARKSIDE

RESIDENCES AT BRICKELL

## Line 31 Level 3-6

1B / 1B

TOTAL AREA  
579 SF | 49 M2



🏠 Oral representations cannot be relied upon as correctly stating the representations of the developer. For correct representations, make reference to this brochure and the documents required by section 718.503, Florida Statutes, to be furnished by a developer to a buyer or lessee. The above drawings are conceptual only and are subject to change without notice at the discretion of the developer. The developer reserves the right to make additions, deletions and modifications to the drawings as the developer may deem appropriate or desirable. Dimensions and square footages are approximate and may vary with actual construction.

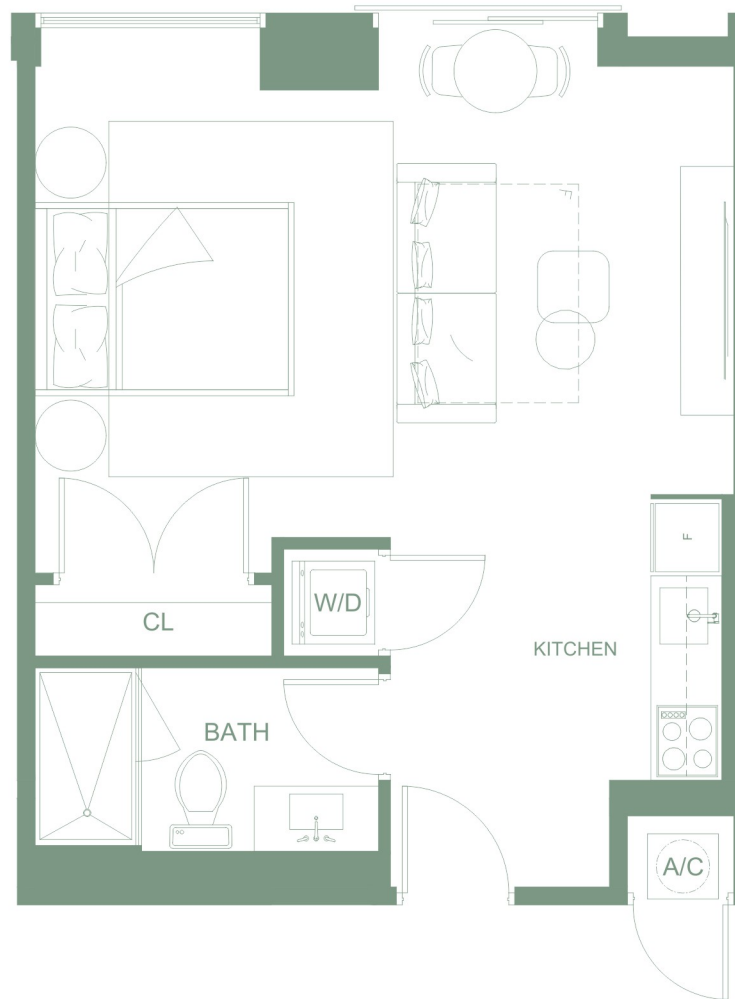
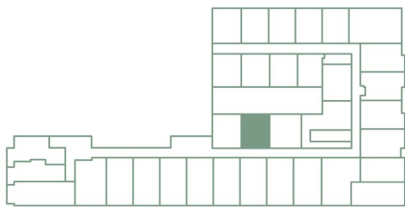
# PARKSIDE

RESIDENCES AT BRICKELL

## Line 32 Level 3-6

Studio

TOTAL AREA  
461 SF | 43 M2



Oral representations cannot be relied upon as correctly stating the representations of the developer. For correct representations, make reference to this brochure and the documents required by section 718.503, Florida Statutes, to be furnished by a developer to a buyer or lessee. The above drawings are conceptual only and are subject to change without notice at the discretion of the developer. The developer reserves the right to make additions, deletions and modifications to the drawings as the developer may deem appropriate or desirable. Dimensions and square footages are approximate and may vary with actual construction.

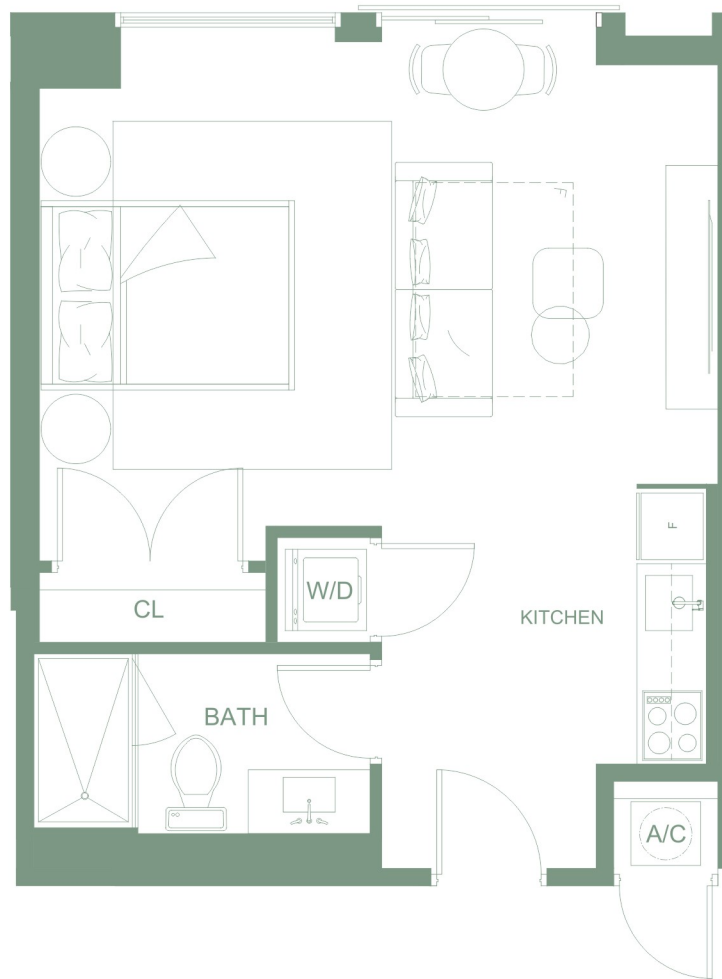
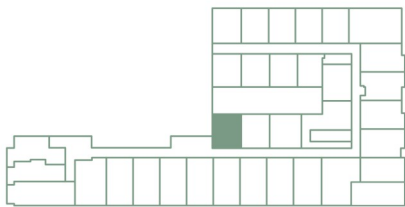
# PARKSIDE

RESIDENCES AT BRICKELL

## Line 33 Level 3-6

Studio

TOTAL AREA  
463 SF | 43 M2



🏠 Oral representations cannot be relied upon as correctly stating the representations of the developer. For correct representations, make reference to this brochure and the documents required by section 718.503, Florida Statutes, to be furnished by a developer to a buyer or lessee. The above drawings are conceptual only and are subject to change without notice at the discretion of the developer. The developer reserves the right to make additions, deletions and modifications to the drawings as the developer may deem appropriate or desirable. Dimensions and square footages are approximate and may vary with actual construction.