



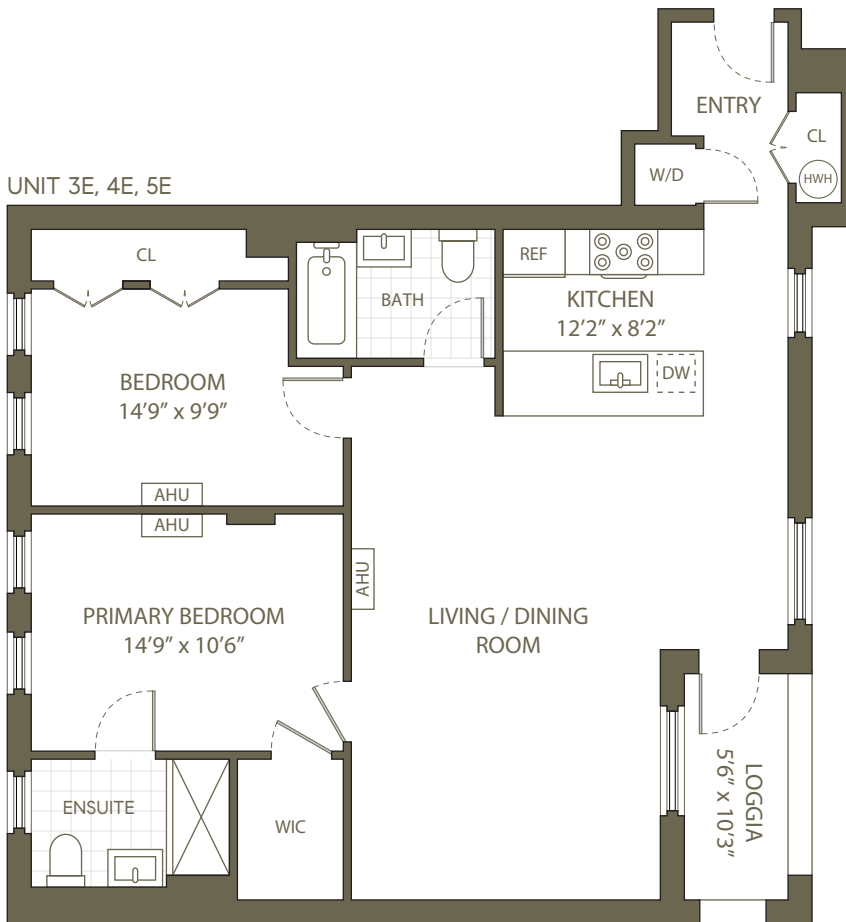
E calvertcollection@corcoran.com
P (718) 422-2586
W www.calvertcollection.nyc

625 NEW YORK AVENUE
Unit 3E, 4E, 5E
BROOKLYN NY 11203

Interior 1,090 sf / 101.3 sm
Bedrooms 2
Bathrooms 2

Exterior 62 sf / 5.7 sm
1 Terrace

W, E
E-line: 3rd, 4th, 5th
Unit 3E, 4E, 5E



Purchasers should refer to the offering plan for further detail. This is not an offering. The complete offering terms are in an offering plan available from sponsor 625 New York, 2022 LLC. File no. CD24-0299. All dimensions are approximate and subject to normal construction variances and tolerances. Plans and dimensions may contain minor variations from floor to floor. The square footage on this floor plan exceeds the usable square footage. The furniture depicted herein is not included in the sale of the unit. Sponsor reserves the right to make changes in accordance with the terms of the offering plan. Sponsor address: 535 Flatbush Avenue, Ste. 315, Brooklyn, New York 11225. Equal housing opportunity.

CALVERT
HOUSE

corcoran
NEW DEVELOPMENT

