



A GLOBAL COMMUNITY OF REAL ESTATE PROFESSIONALS
REPRESENTING EXCEPTIONAL LUXURY REAL ESTATE

LUXURYREAL ESTATE.COM™
— WHO'S WHO IN LUXURY REAL ESTATE —



SHANE  **REAL ESTATE**
WATERFRONT WILSON TEAM.com



A GLOBAL COMMUNITY OF LOCAL EXPERTS

The reach of the global community of Who's Who in Luxury Real Estate and LuxuryRealEstate.com provides members with the ability to assist buyers and sellers anywhere in the world.

The global relationships cultivated through members of Who's Who in Luxury Real Estate provide unmatched promotion for your luxury real estate and connections to local real estate professionals around the world. This hand-selected group with properties in more than 42 countries collectively sells over \$300 billion of real estate annually, making it the most elite and comprehensive luxury real estate network in the world.



MEMBER OFFICES.....	35+ COUNTRIES
LUXURY REAL ESTATE PROFESSIONALS.....	130,000+
TOTAL PROPERTIES.....	33,700+
PROPERTY COUNTRIES.....	42

With over 130,000 professionals in 42 countries worldwide, the global reach of the Who's Who in Luxury Real Estate community, and the Board of Regents, the network within the network, is unmatched.

It provides members with the ability to assist buyers and sellers anywhere in the world.



WHO'S WHO IN LUXURY REAL ESTATE



BOARD OF REGENTS

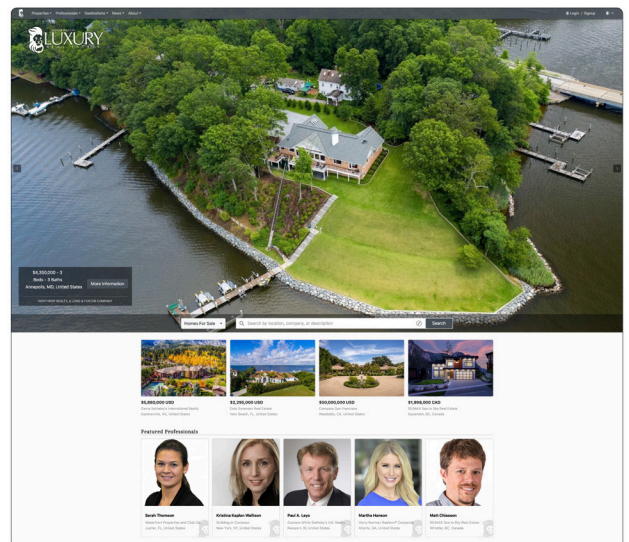


LUXURYREALESTATE.COM

Who's Who in Luxury Real Estate's global network is showcased on LuxuryRealEstate.com, the leading portal for luxury properties online, presenting exclusive multi-million-dollar estates. Frequently distinguished as a leader in the industry, the company has been recognized by Forbes, the Inc. 5000 List and The Wall Street Journal. In addition, they have been honored multiple times by The Webby Awards, ADDY Awards and most recently awarded the 'Best Directory or Search Engine Website' in the 2022 Internet Advertising Competition Awards hosted by the Web Marketing Association.

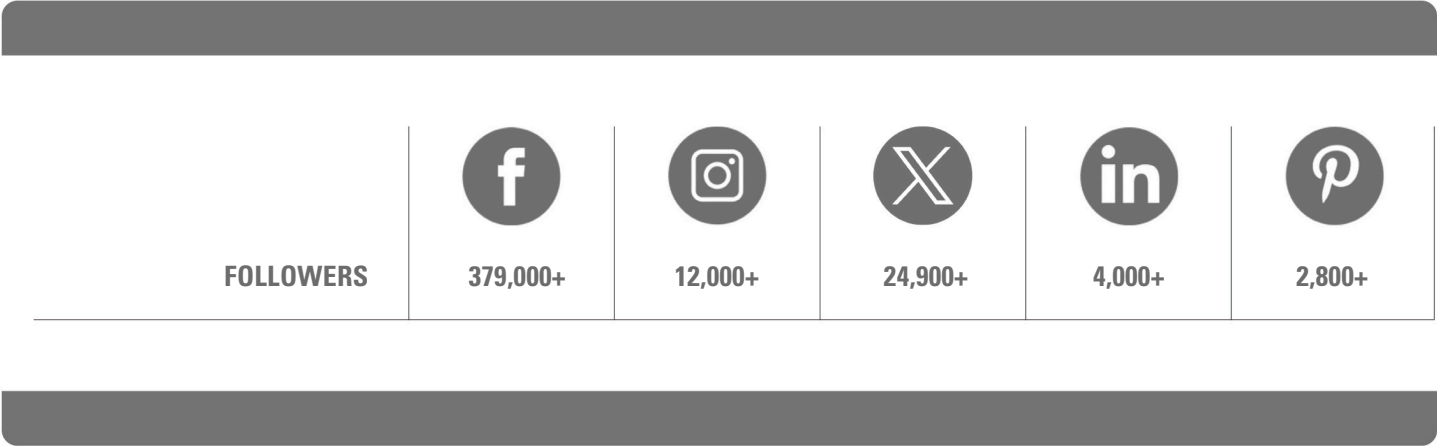
LUXURYREALESTATE.COM AUDIENCE

ANNUAL PAGE VIEWS	22,065,064
VISITS PER MONTH	215,476
MEN/WOMEN	47.2% / 52.8%
NET WORTH	50% over \$250,000+, 34% over \$500,000+
NET WORTH	40% over \$1.5M+, 27% over \$3.5M

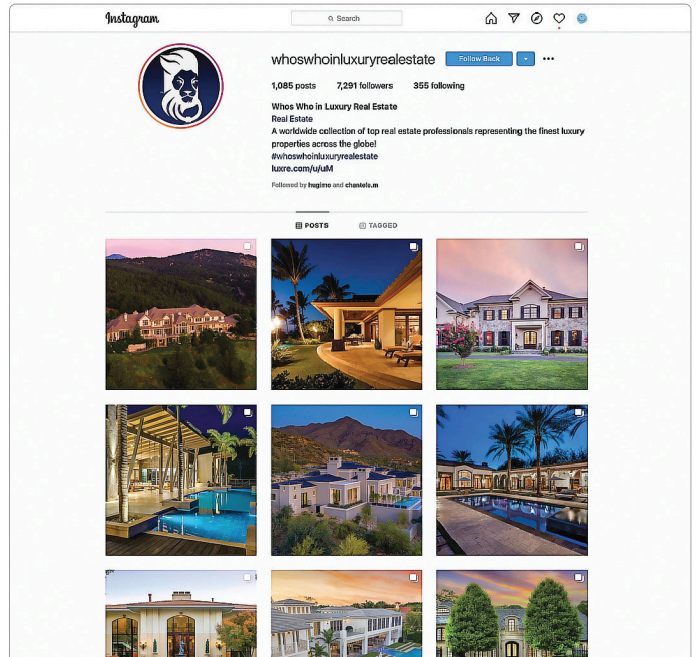
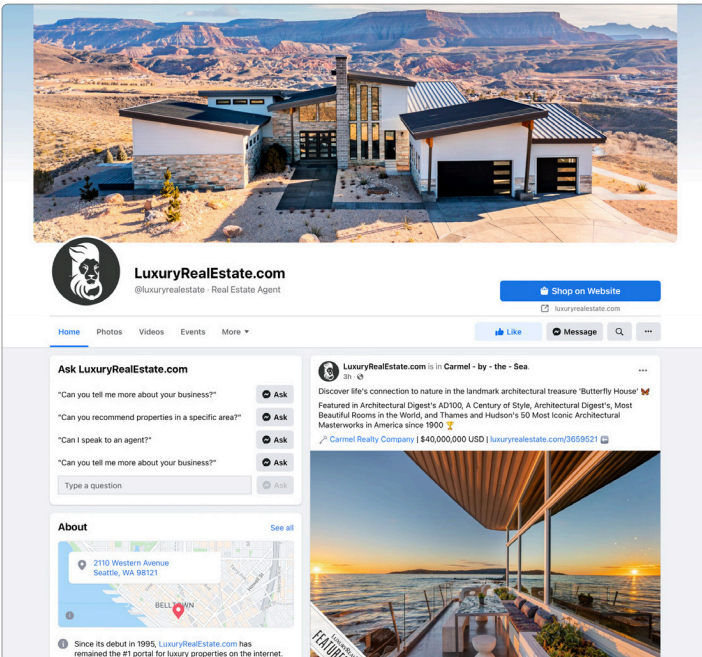


SOCIAL MEDIA LEADER

Who's Who in Luxury Real Estate is a leader on social media. We utilize Facebook, Instagram, X, Pinterest and LinkedIn to engage luxury home buyers on LuxuryRealEstate.com. As a member, you can leverage our social media sharing tools and groups to promote your properties, company and region as well as spread important news to consumers and the entire community of luxury brokers worldwide. LuxuryRealEstate.com also partners with prominent luxury real estate social media influencers to further expand the reach of member listings.



The LuxuryRealEstate.com Facebook page with over 379,000 followers, is increasing at a steady rate of approximately 1,000 new followers per week, and outperforms the average all-industry engagement rate.”





LRE® EVENTS

Regarded as one of the 'Best Real Estate Conferences and Events for Luxury Brokers' by Placester, four annual networking events connect key industry leaders from top international luxury real estate companies. These events provide an opportunity to showcase your property to luxury real estate brokers worldwide as well as an opportunity for members to learn about luxury real estate that may be of interest to you.





LUXURYREALESTATE.COM™
WHO'S WHO IN LUXURY REAL ESTATE

To learn more about Who's Who in Luxury Real Estate's hand-selected group of international real estate professionals and their industry advantage, visit www.LuxuryRealEstate.com.

SHANE WATERFRONT REAL ESTATE WILSONTEAM.com