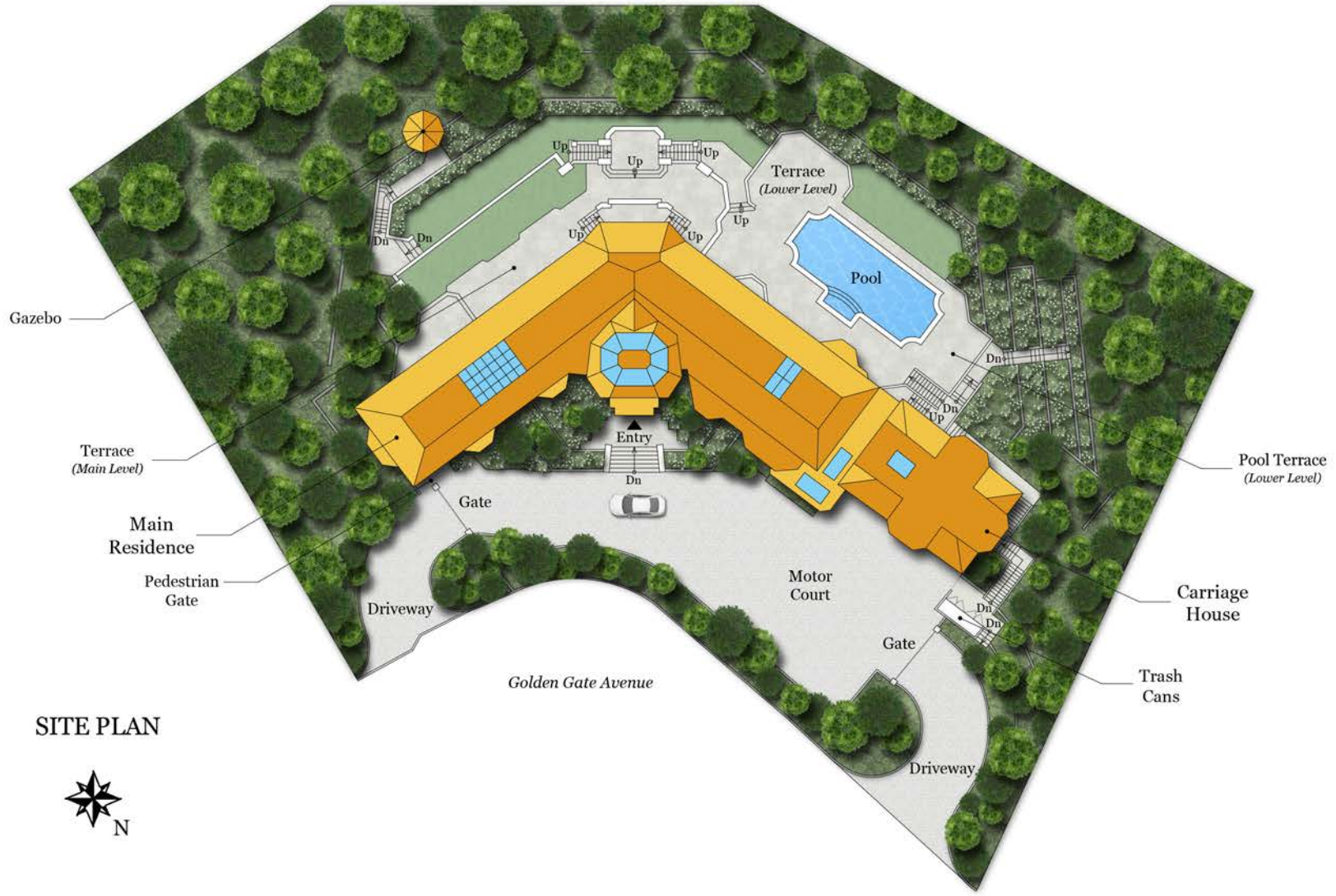


# 255 GOLDEN GATE AVENUE

BELVEDERE, CA 94920



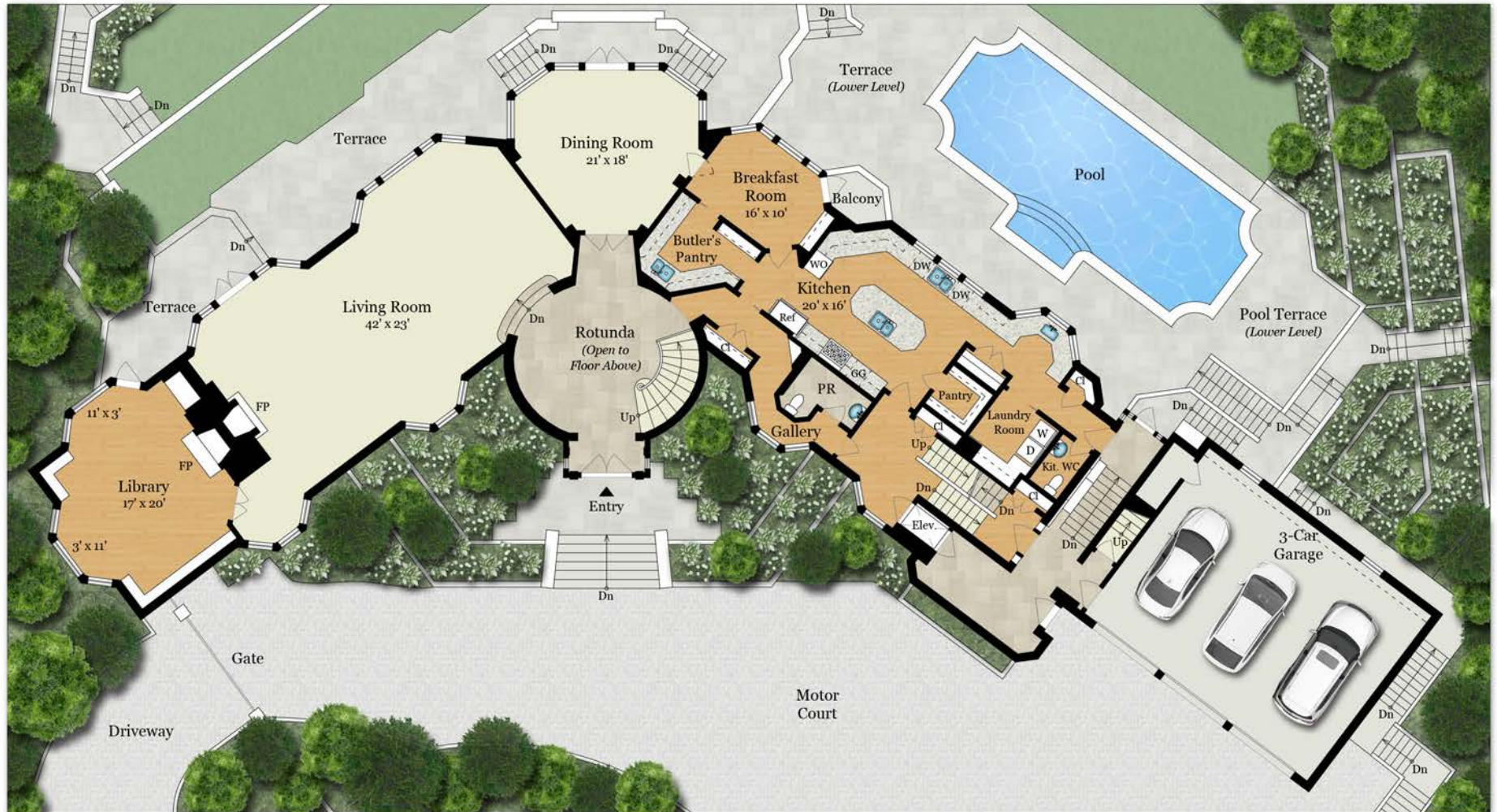
SITE PLAN





# 255 GOLDEN GATE AVENUE

BELVEDERE, CA 94920



**MAIN RESIDENCE**  
**MAIN LEVEL**  
3,925 SQ FT

**CARRIAGE HOUSE**  
**THIRD FLOOR**  
65 SQ FT - Finished  
805 SQ FT - Garage

Rendering by Floor Plan Visuals.  
All measurements are approximate. While deemed reliable, no information on these floor plans should be relied upon without independent verification.

Lydia Sarkissian | Bill Bullock  
Tel: 415.517.7720 | 415.868.9700  
Email: l.sarkissian@deckerbullocksir.com | b.bullock@deckerbullocksir.com

# 255 GOLDEN GATE AVENUE

BELVEDERE, CA 94920

**Estimated Total Finished  
Square Footage: 12,470 SQ FT**

Above-Grade: 8,355 SQ FT Below-Grade: 4,115 SQ FT  
Calculated per ANSI Standard Z765-2003

- **Main Residence: 10,655 SQ FT**
  - Main Level: 3,925 SQ FT
  - Upper Level: 3,460 SQ FT
  - Lower Level: 3,270 SQ FT
- **Carriage House : 1,815 SQ FT**
  - Second Floor: 845 SQ FT
  - Third Floor: 65 SQ FT
  - Fourth Floor: 905 SQ FT

**Unfinished Square Footage: 1,570 SQ FT**

- Storage (Main House-Lower Level): 560 SQ FT
- 3-Car Garage (Carriage House-Third Floor): 805 SQ FT
- Mech Room (Carriage House-First Floor): 205 SQ FT

**Estimated Total Finished & Unfinished  
Square Footage: 14,040 SQ FT**



**MAIN RESIDENCE  
UPPER LEVEL**  
3,460 SQ FT

**CARRIAGE HOUSE  
FOURTH FLOOR**  
905 SQ FT



# 255 GOLDEN GATE AVENUE

BELVEDERE, CA 94920



Rendering by Floor Plan Visuals.  
All measurements are approximate. While deemed reliable, no information on these floor plans should be relied upon without independent verification.

Lydia Sarkissian | Bill Bullock  
Tel: 415.517.7720 | 415.868.9700  
Email: l.sarkissian@deckerbullocksir.com | b.bullock@deckerbullocksir.com