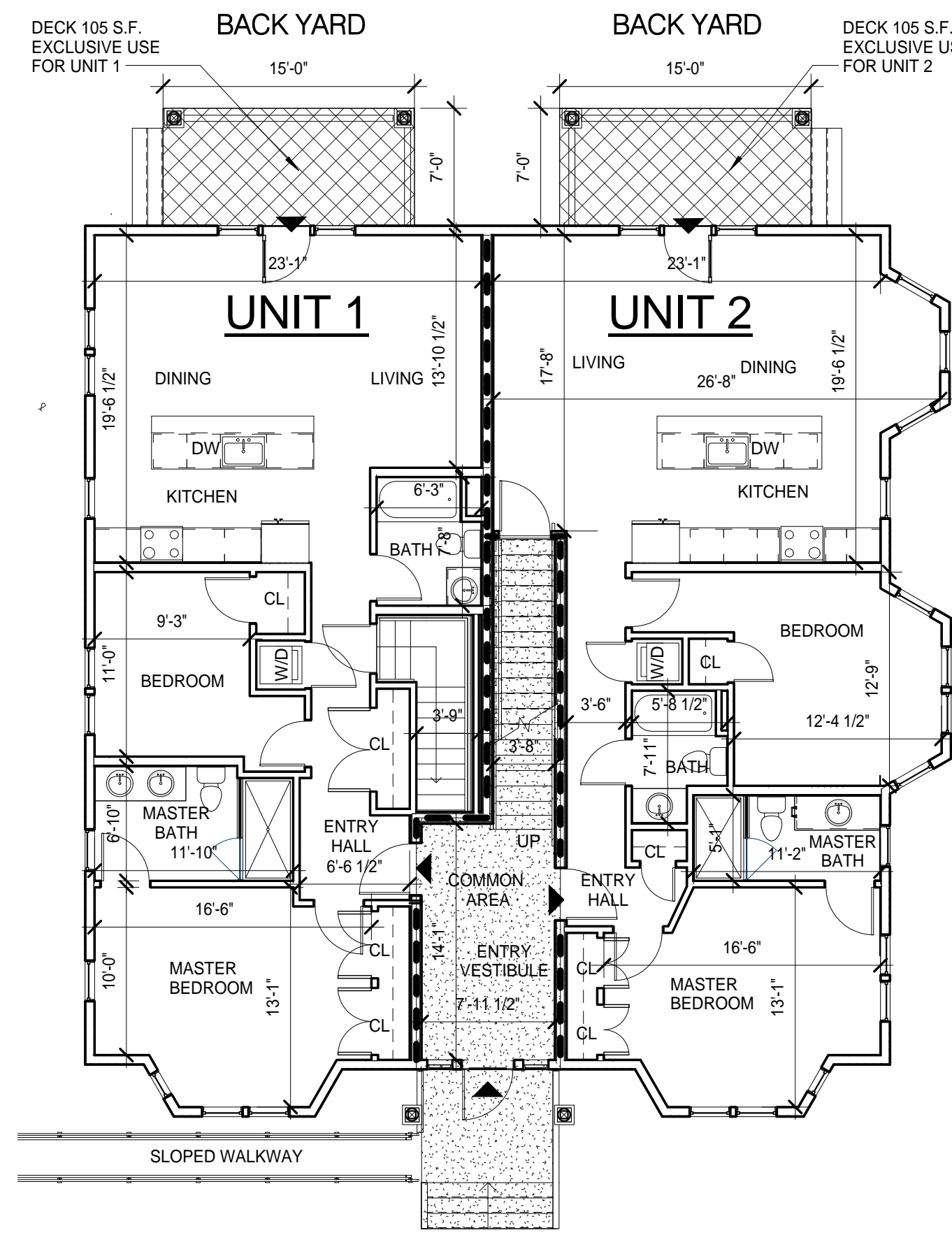
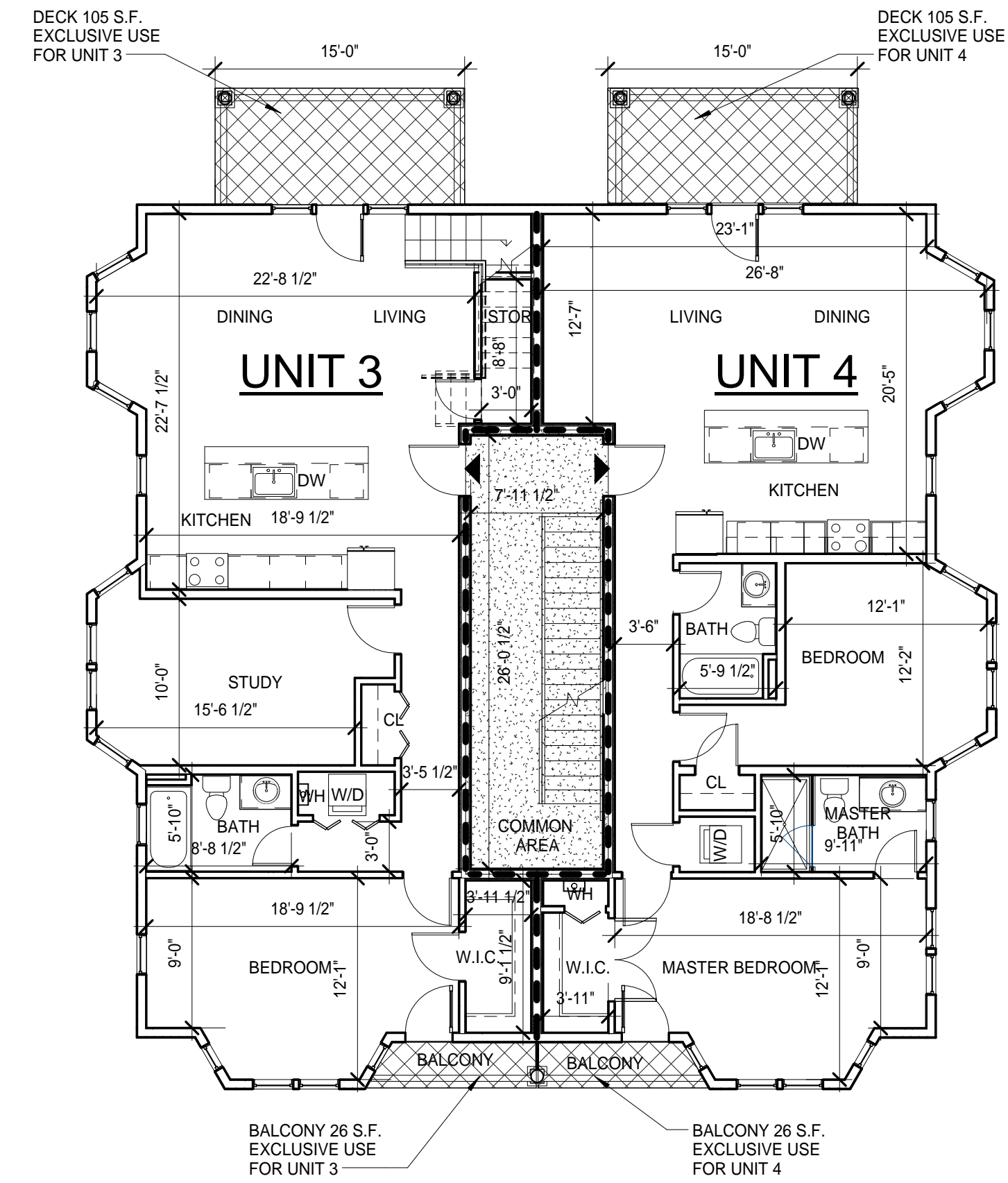


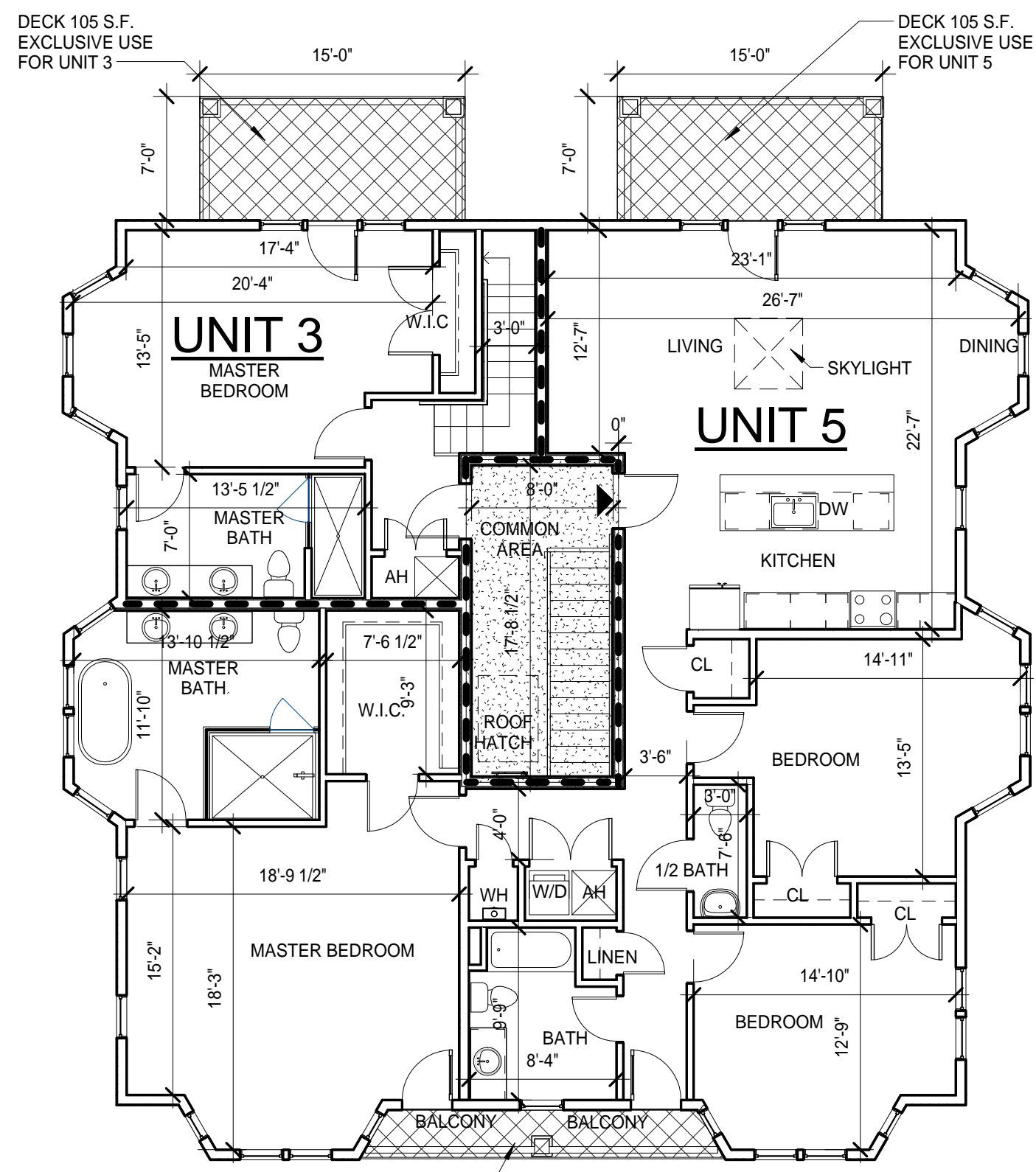
① 0 - Basement
1/8" = 1'-0"



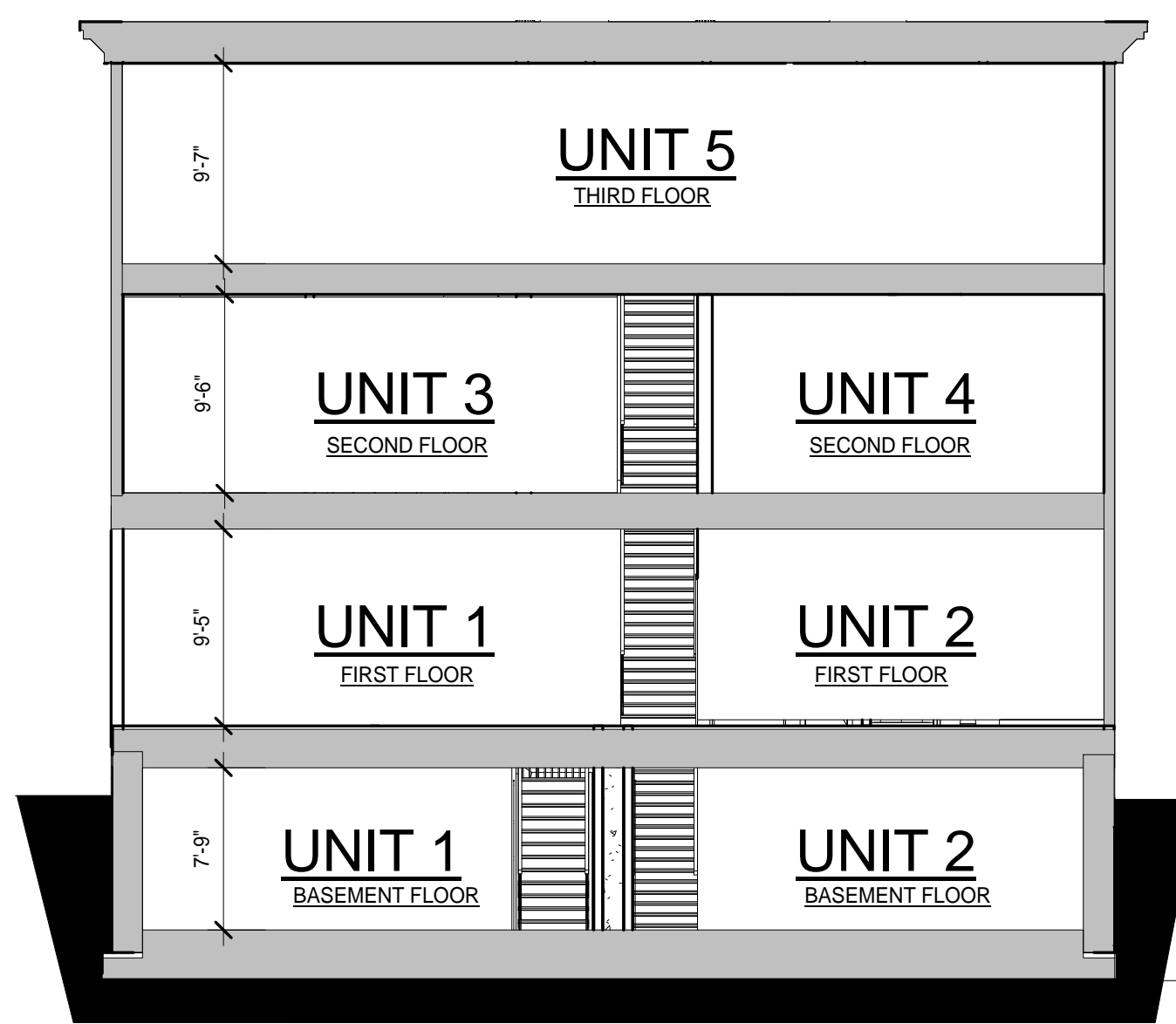
② 1- 1st Floor Level
1/8" = 1'-0"



③ 2 - 2nd Floor Level
1/8" = 1'-0"

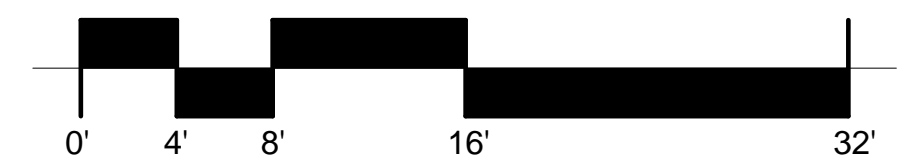


④ 3 - 3rd Floor Level
1/8" = 1'-0"



⑤ Section
1/8" = 1'-0"

UNIT NO.	UNIT SQUARE FOOTAGE	
1	1,171 S.F. FIRST FLOOR + 1,008 S.F. BASEMENT = 2,179 S.F. UNIT + 105 S.F. EXCLUSIVE USE 1ST FLOOR DECK	
2	1,238 S.F. FIRST FLOOR + 1,252 S.F. BASEMENT = 2,490 S.F. UNIT + 105 S.F. EXCLUSIVE USE FIRST FLOOR DECK	
3	1,180 S.F. SECOND FLOOR + 510 S.F. THIRD FLOOR = 1,690 S.F. UNIT + 210 S.F. EXCLUSIVE USE SECOND AND THIRD FLOOR DECK + 26 S.F. EXCLUSIVE USE SECOND FLOOR BALCONY	
4	1,185 S.F. SECOND FLOOR = 1,185 S.F. UNIT + 105 S.F. EXCLUSIVE USE SECOND FLOOR DECK + 26 S.F. EXCLUSIVE USE SECOND FLOOR BALCONY	
5	1,928 S.F. THIRD FLOOR = 1,928 S.F. UNIT + 105 S.F. EXCLUSIVE USE THIRD FLOOR DECK + 53 S.F. BALCONY	
FLOOR NO.	GROSS FLOOR AREA	COMMON FLOOR AREA
BASEMENT	2,560 S.F.	240 S.F. MECHANICAL ROOM
1	2,560 S.F.	205 S.F. + 80 S.F. FRONT DECK.
2	2,597 S.F.	230 S.F.
3	2,597 S.F.	157 S.F.



FOR REGISTRY USE ONLY

20 Kent Court
20 Kent Court, Somerville MA 02143

LEGEND

- DEMISING WALL
- COMMON AREA
- EXCLUSIVE USE AREA
- ▶ UNIT ENTRANCE
- INTERIOR WALL

ARCHITECT

DESIGN

KHALSA

17 VALOO STREET SUITE 400
SOMERVILLE, MA 02143
TELEPHONE: 617-591-8682 FAX: 617-591-2086

CERTIFICATION:

I CERTIFY THAT THIS PLAN FULLY AND ACCURATELY DEPICTS THE LAYOUT, LOCATION, DIMENSIONS, APPROXIMATE AREA, MAIN ENTRANCE UNIT NUMBER AND IMMEDIATE COMMON AREA OF UNIT 1, 2, 3, 4 & 5 AT 20 KENT COURT, SOMERVILLE MA, AS BUILT. THIS PLAN HAS BEEN PREPARED IN CONFORMITY WITH THE RULES AND REGULATIONS OF THE MIDDLESEX COUNTY SOUTH REGISTRY OF DEEDS.

JAI SINGH KHALSA, NCARB,
ARCHITECT
MA REG. NO. 6042
DATE:

REGISTRATION

Project number 15013
Date 1/10/2018
Drawn by MJ
Checked by JSK

Master Deed

MD-1

Scale: As indicated
Project: 20 Kent Court

3/15/2018 11:39:19 AM