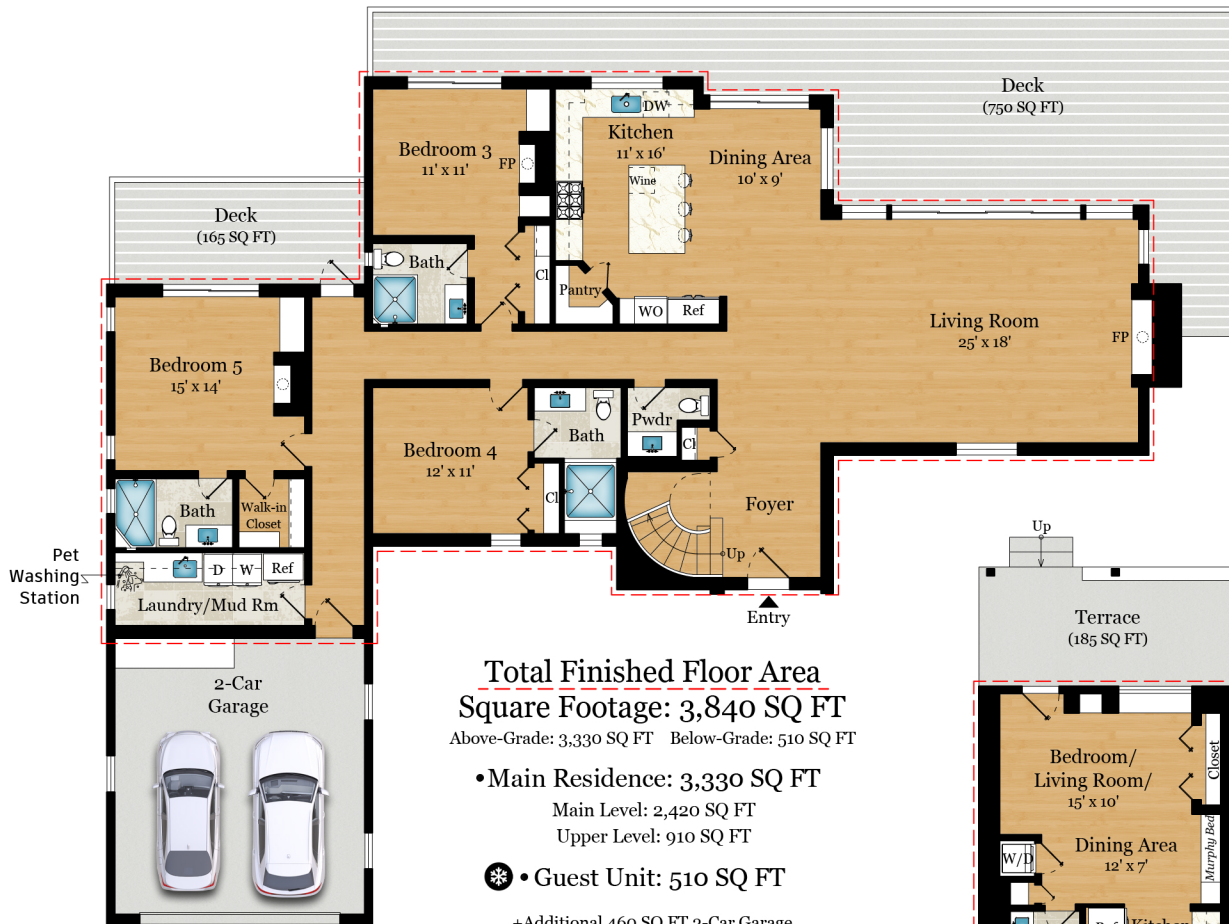


# 9 BURRELL COURT

TIBURON, CA 94920



## MAIN LEVEL

2,420 SQ FT

**Total Finished Floor Area**  
**Square Footage: 3,840 SQ FT**

Above-Grade: 3,330 SQ FT Below-Grade: 510 SQ FT

• **Main Residence: 3,330 SQ FT**

Main Level: 2,420 SQ FT

Upper Level: 910 SQ FT

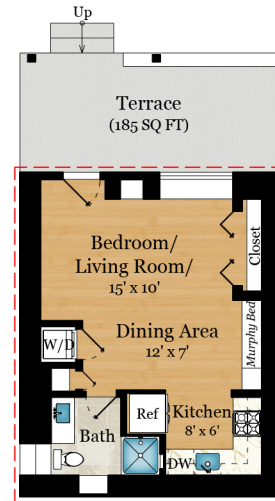
• **Guest Unit: 510 SQ FT**

+Additional 460 SQ FT 2-Car Garage

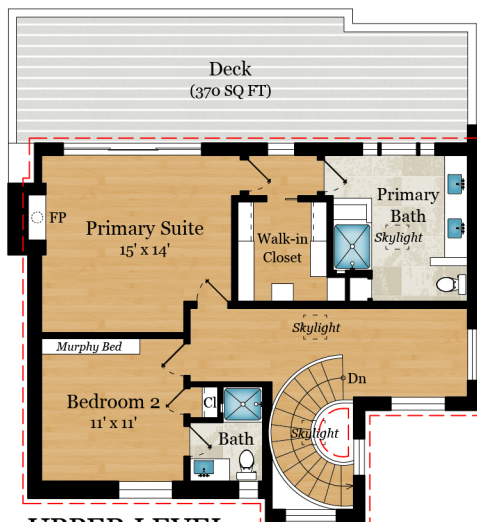
Measured per **ANSI Standard Z765-2021.**

Total Finished & Unfinished Floor Area SQ FT: 4,300 SQ FT

+Additional 1,470 SQ FT Non-Living Space (Decks/Terrace)

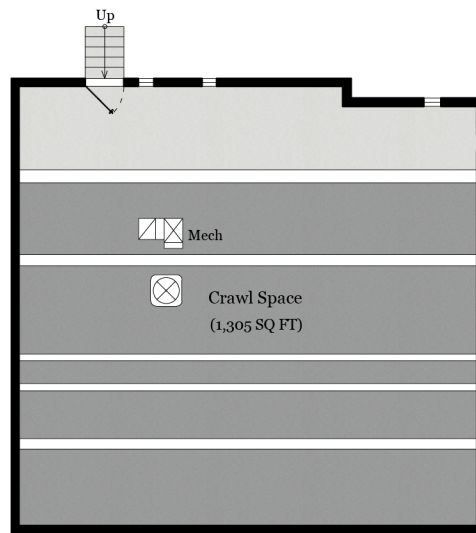


**Guest Unit** • (Equipped w/ A/C)  
 510 SQ FT



## UPPER LEVEL

910 SQ FT



## BASEMENT

Rendering by:



Single Family



+Guest Unit



3,840



2-Car Garage



5 Bedrooms



5.5 Baths

1 Bed(Guest Unit)

1 Bath(Guest Unit)

Shana Rohde-Lynch  
 Broker Associate | DRE 01079806  
 SRL@Compass.com  
 M: 415-264-7101

# 9 BURRELL COURT

TIBURON, CA 94920



SITE PLAN

Rendering by:



Single + Guest Family Unit



3,840



2-Car Garage



5 Bedrooms



5.5 Baths

1 Bed (Guest Unit)

1 Bath (Guest Unit)

Shana Rohde-Lynch  
Broker Associate | DRE 01079806  
SRL@Compass.com  
M: 415-264-7101