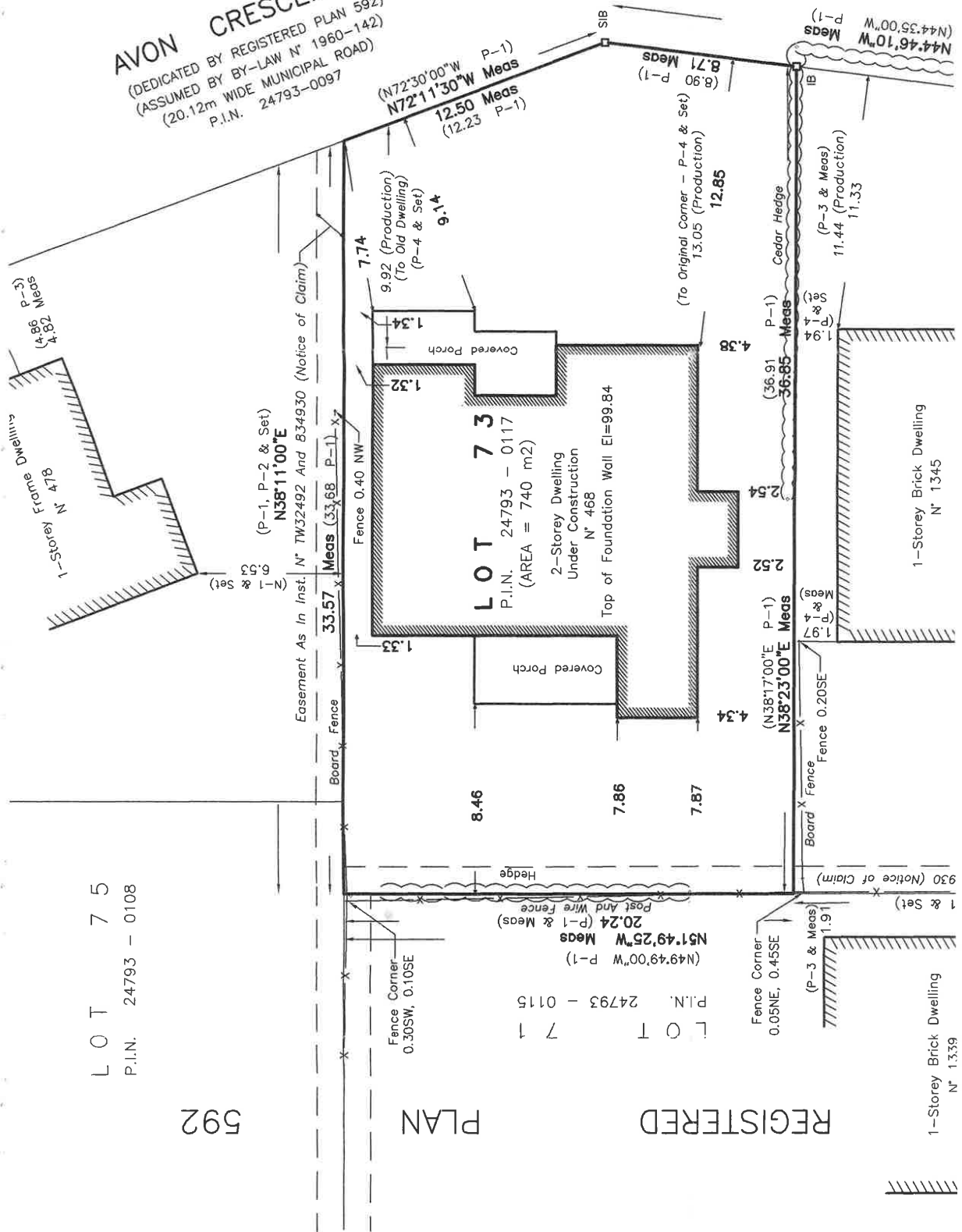


**AVON CRESCENT**  
 (DEDICATED BY REGISTERED PLAN 592)  
 (ASSUMED BY BY-LAW N° 1960-142)  
 (20.12m WIDE MUNICIPAL ROAD)  
 P.I.N. 24793-0097



**LOT 75**  
 P.I.N. 24793 - 0108

**592**

**PLAN**

**REGISTERED**

**1-Storey Brick Dwelling**  
 N° 1339

**LOT 71**  
 P.I.N. 24793 - 0115

**LOT 73**  
 P.I.N. 24793 - 0117  
 (AREA = 740 m<sup>2</sup>)

Fence Corner  
 0.30SW, 0.10SE

Fence Corner  
 0.05NE, 0.45SE

1 & Set)

(P-3 & Meas)

930 (Notice of Claim)

Board Fence

Fence 0.20SE

Board Fence

(P-4 & Set)

1.97 Meas

(P-4 & Set)

1.94 Meas

(P-4 & Set)

36.85 Meas

(P-4 & Set)

1.94 Meas

(P-4 & Set)

11.33 (Production)

(P-3 & Meas)

11.44 (Production)

(P-3 & Meas)

11.33 (Production)

(P-3 & Meas)

11.33 (Production)

(P-3 & Meas)

11.33 (Production)

(P-3 & Meas)

11.33 (Production)

(P-3 & Meas)

11.33 (Production)

(P-3 & Meas)

11.33 (Production)

(P-3 & Meas)

11.33 (Production)

(P-3 & Meas)

11.33 (Production)

(P-3 & Meas)

11.33 (Production)

(P-3 & Meas)

11.33 (Production)

(P-3 & Meas)