



GMT

1392 Clearwater Crescent  
Oakville

## Welcome to 1392 Clearwater Crescent

Set on a quiet crescent in one of Oakville's most sought-after family neighbourhoods, this exceptional Joshua Creek residence offers generous scale and thoughtfully designed living spaces. Surrounded by top-ranked schools, beautiful parks, walking trails and everyday amenities, this home is a great opportunity to own a beautifully appointed family home.

Located in the prestigious Joshua Creek community, known for its strong sense of community, excellent schools and convenient access to highways, shopping and dining, this is a home that truly offers the complete package for today's modern family.

### THE GOODALE MILLER TEAM

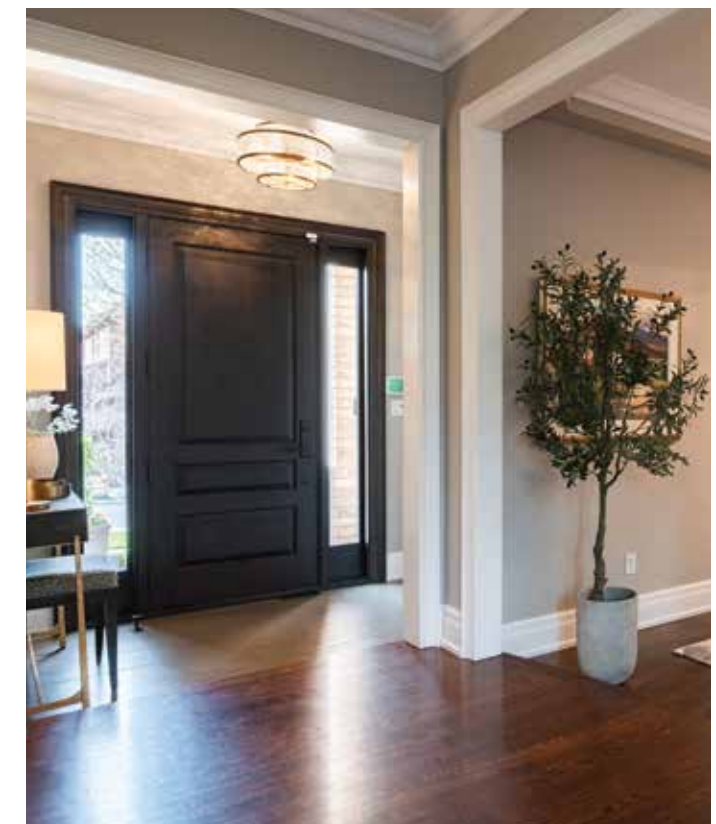
Listing Agents: Brad Miller & Kieran McCourt

SCAN TO VIEW THE  
DIGITAL BROCHURE



## Property Highlights

BEDS	4
BATHS	3.1
LOT SIZE	49.29' x 118.51'
ABOVE GRADE	3,188 sq ft
TOTAL SQ FT	4,892 sq ft
TAXES	\$11,427 / 2026

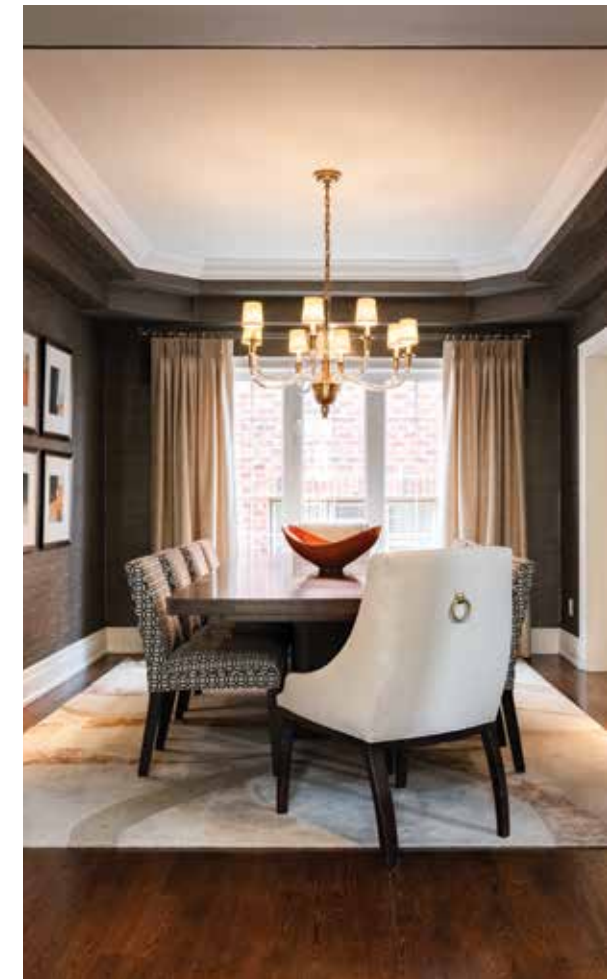




## Main Level

Designed for both entertaining and everyday living, the home features expansive principal rooms, soaring ceilings and an ideal layout spanning almost 3,200 square feet above grade, plus a fully finished lower level. The dramatic family room is a true focal point of the home with soaring 17-foot ceilings, a fireplace and oversized windows that flood the space with natural light, creating a warm yet sophisticated atmosphere for gathering with family and friends.

The heart of the home is the spacious kitchen, thoughtfully designed with an oversized centre island, extensive cabinetry and top of the line appliances, all overlooking the backyard. Seamlessly connected to the family room, the space offers the perfect setting for both casual family living and large-scale entertaining. Formal living and dining rooms provide elegant entertaining spaces, while the dedicated main floor office creates the ideal work-from-home environment tucked privately near the front entrance.





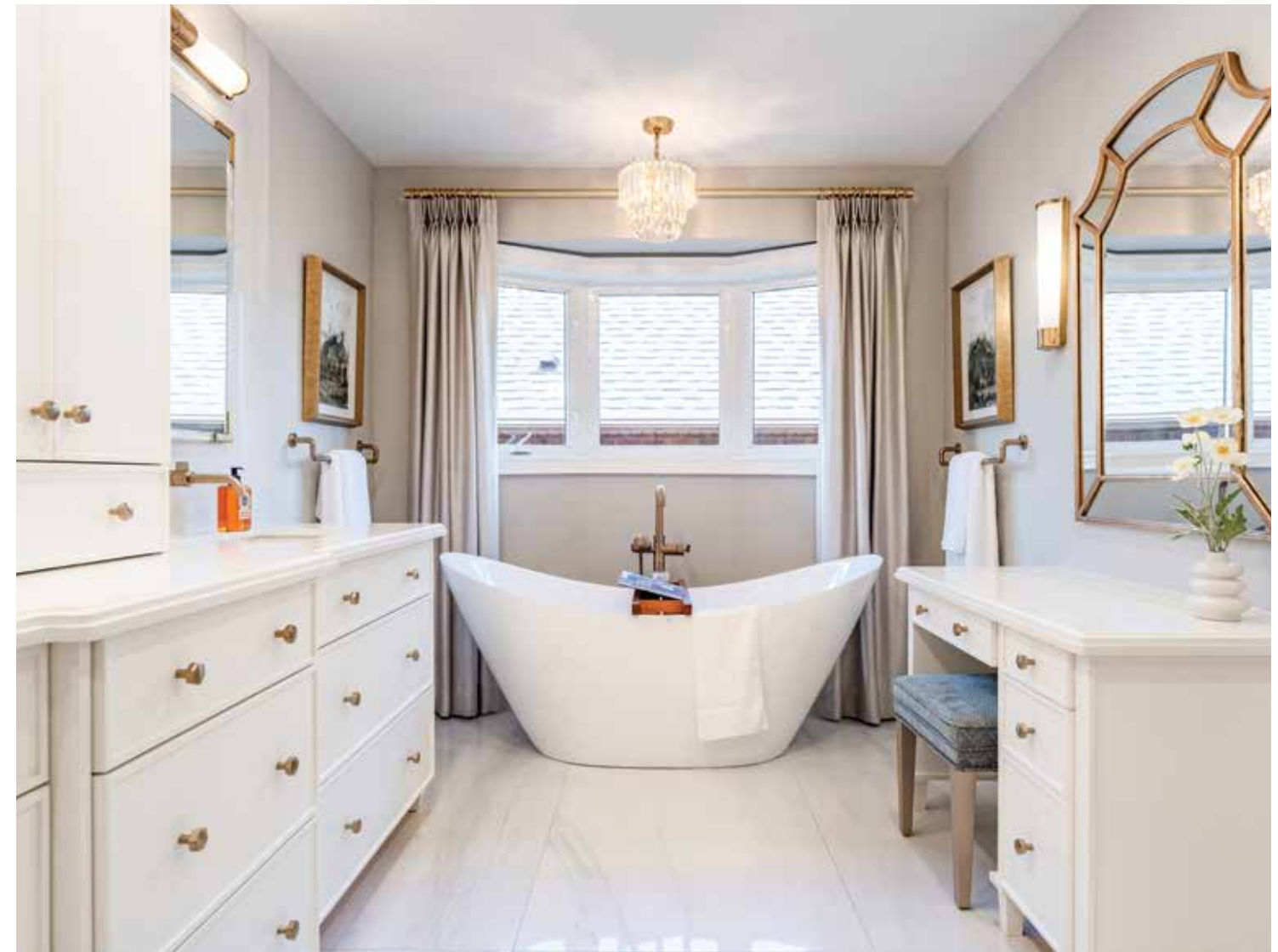


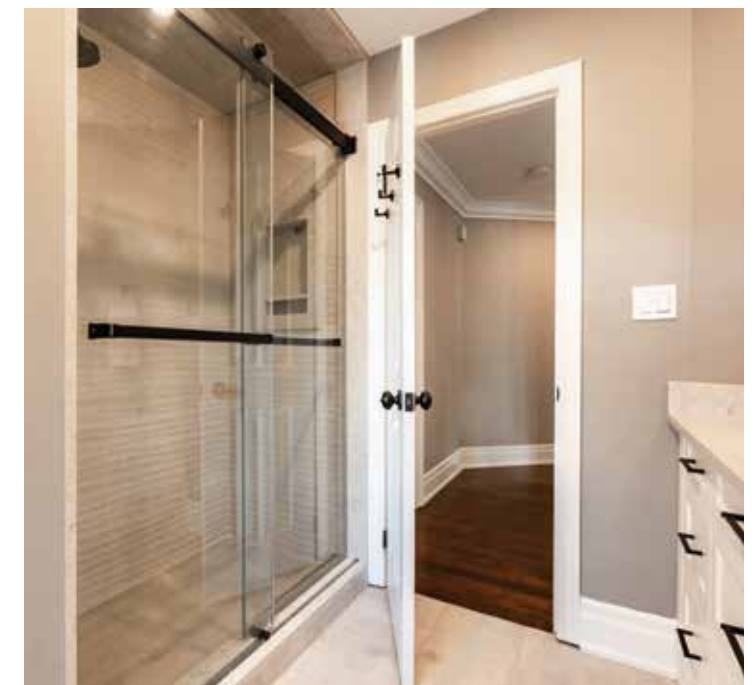


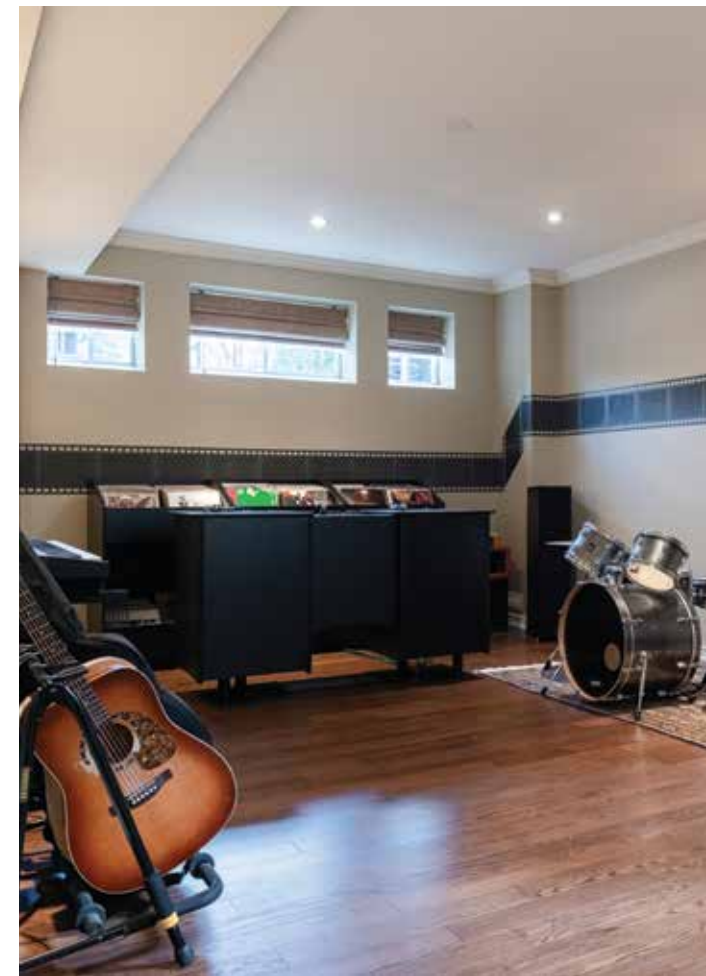


## Second Level

Upstairs, the second level offers four spacious bedrooms including an impressive primary retreat complete with a large walk-in closet and luxurious five-piece ensuite. Each secondary bedroom is exceptionally sized, offering comfort and flexibility for families, while the open-to-below design enhances the home's grand scale and airy feel throughout the upper level.

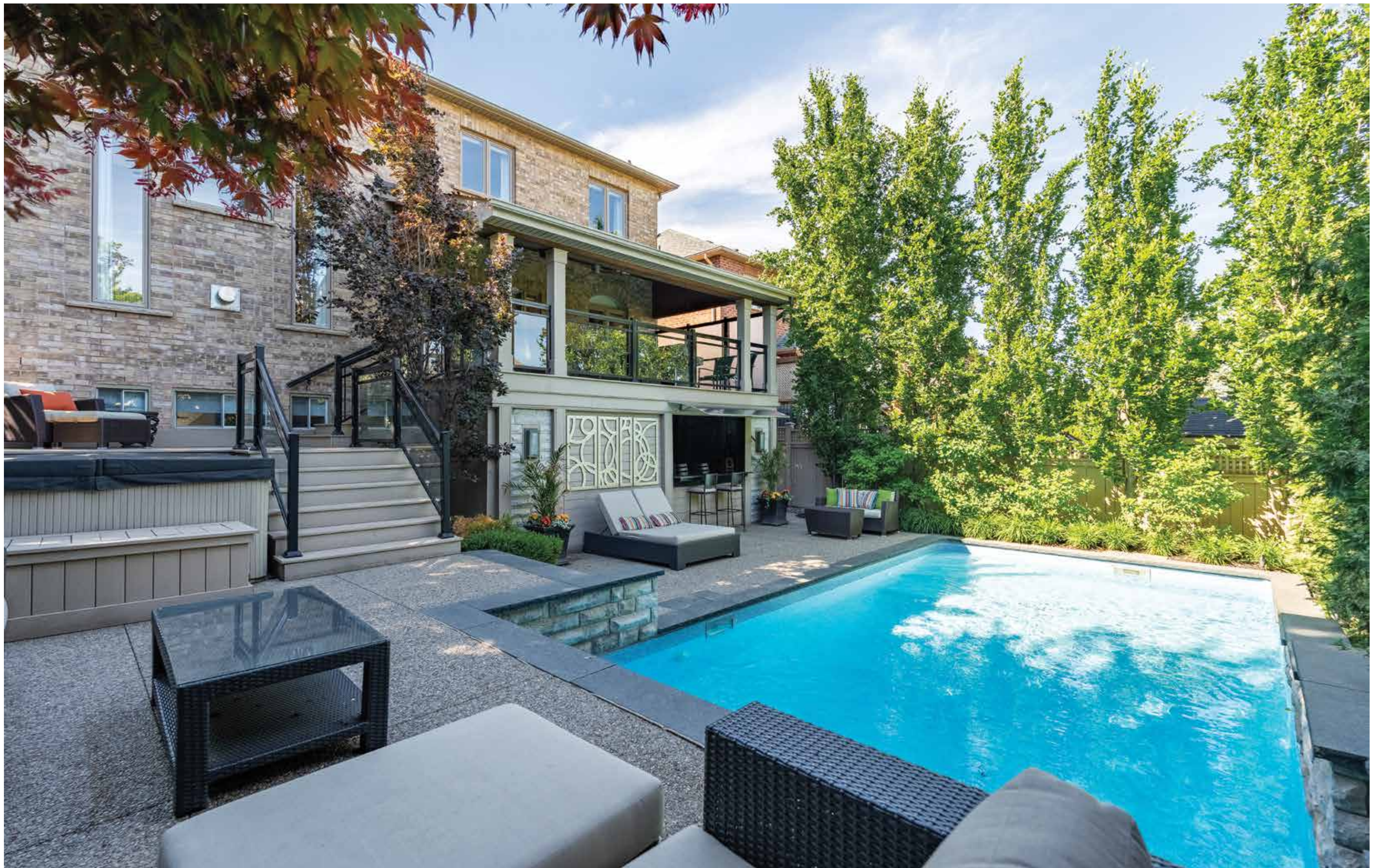


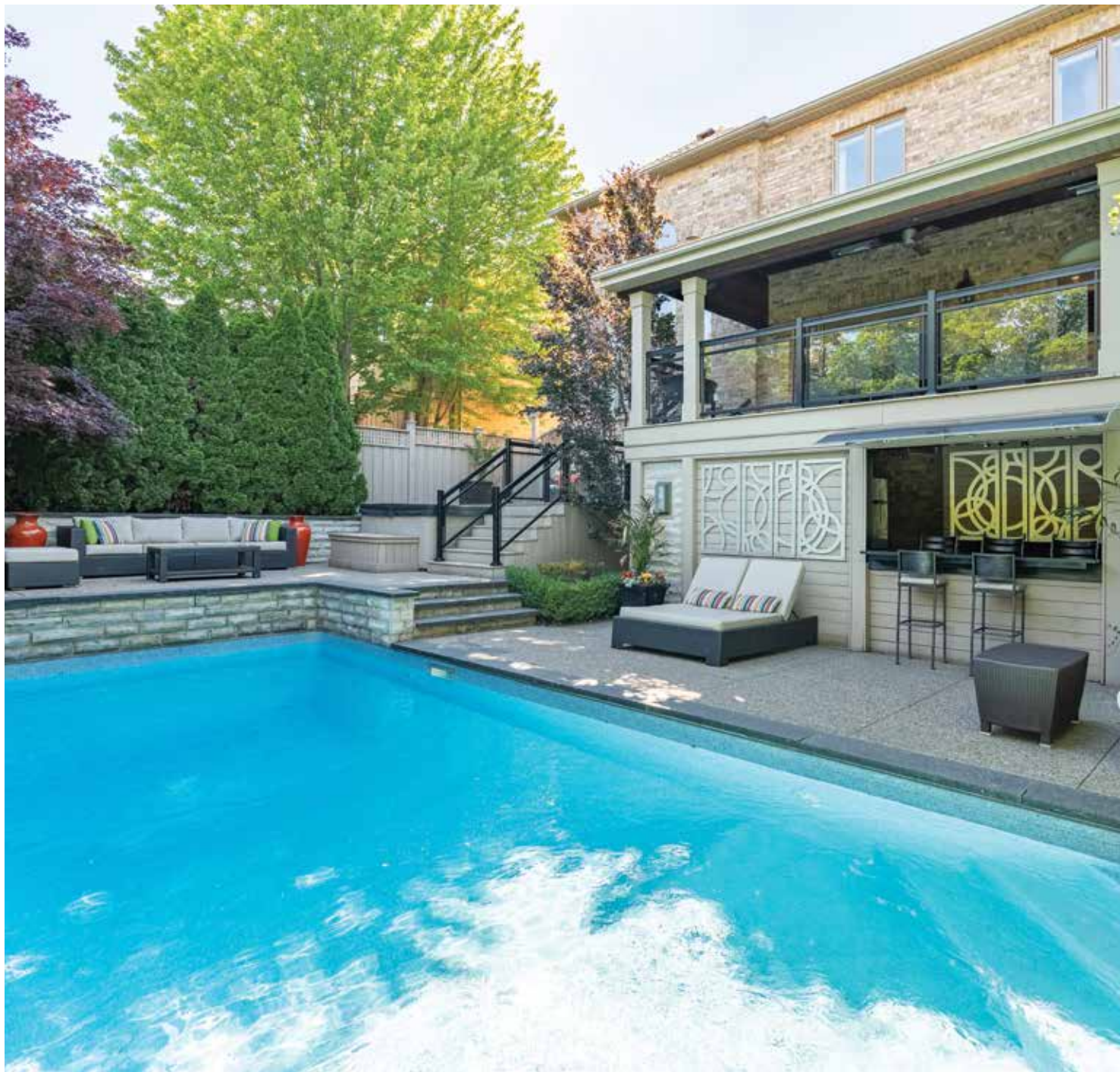




## Lower Level

The fully finished lower level extends the living space even further with a large recreation room, dedicated media space with projector, music room, bar area and additional storage spaces - an incredible setup for family movie nights and entertaining.

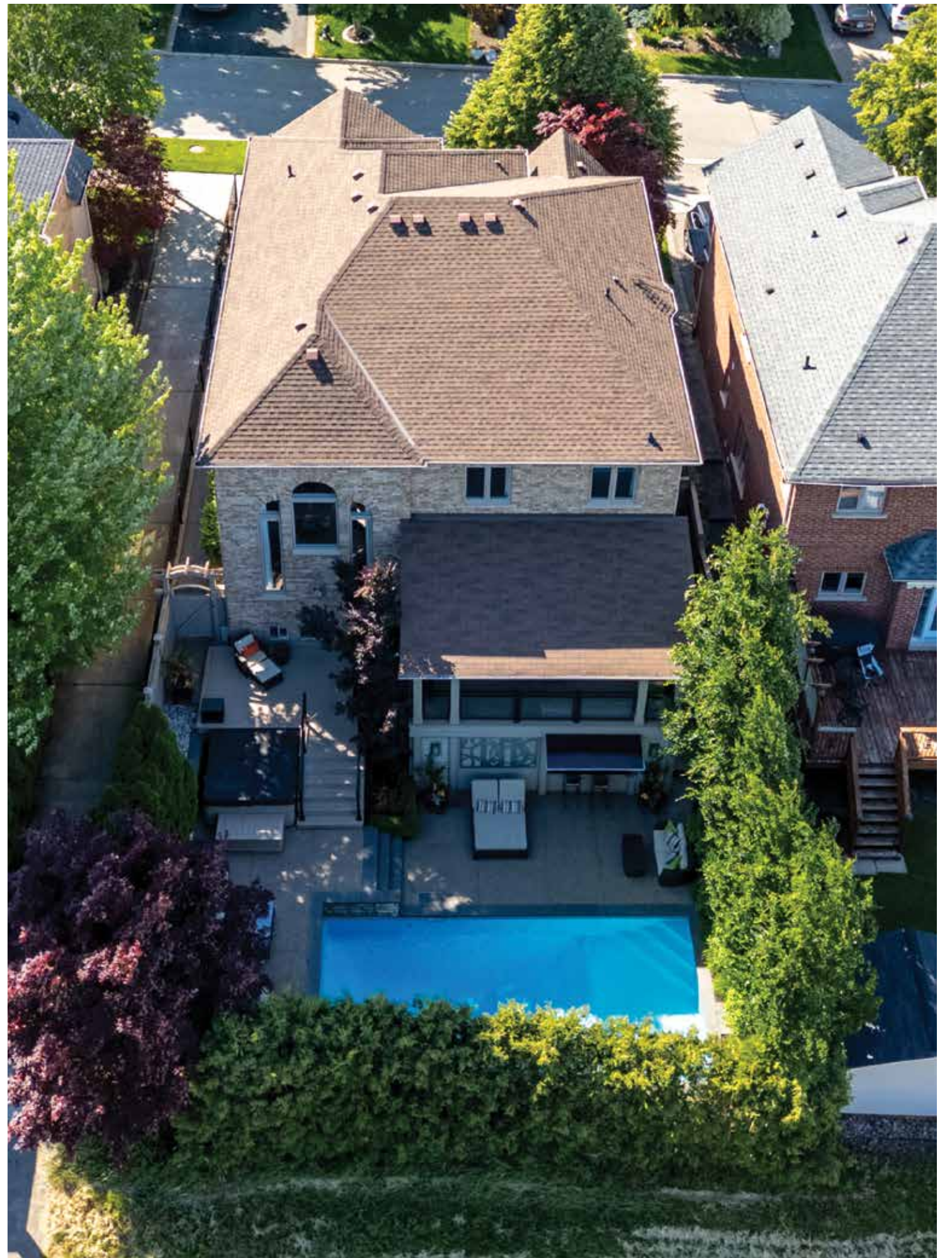




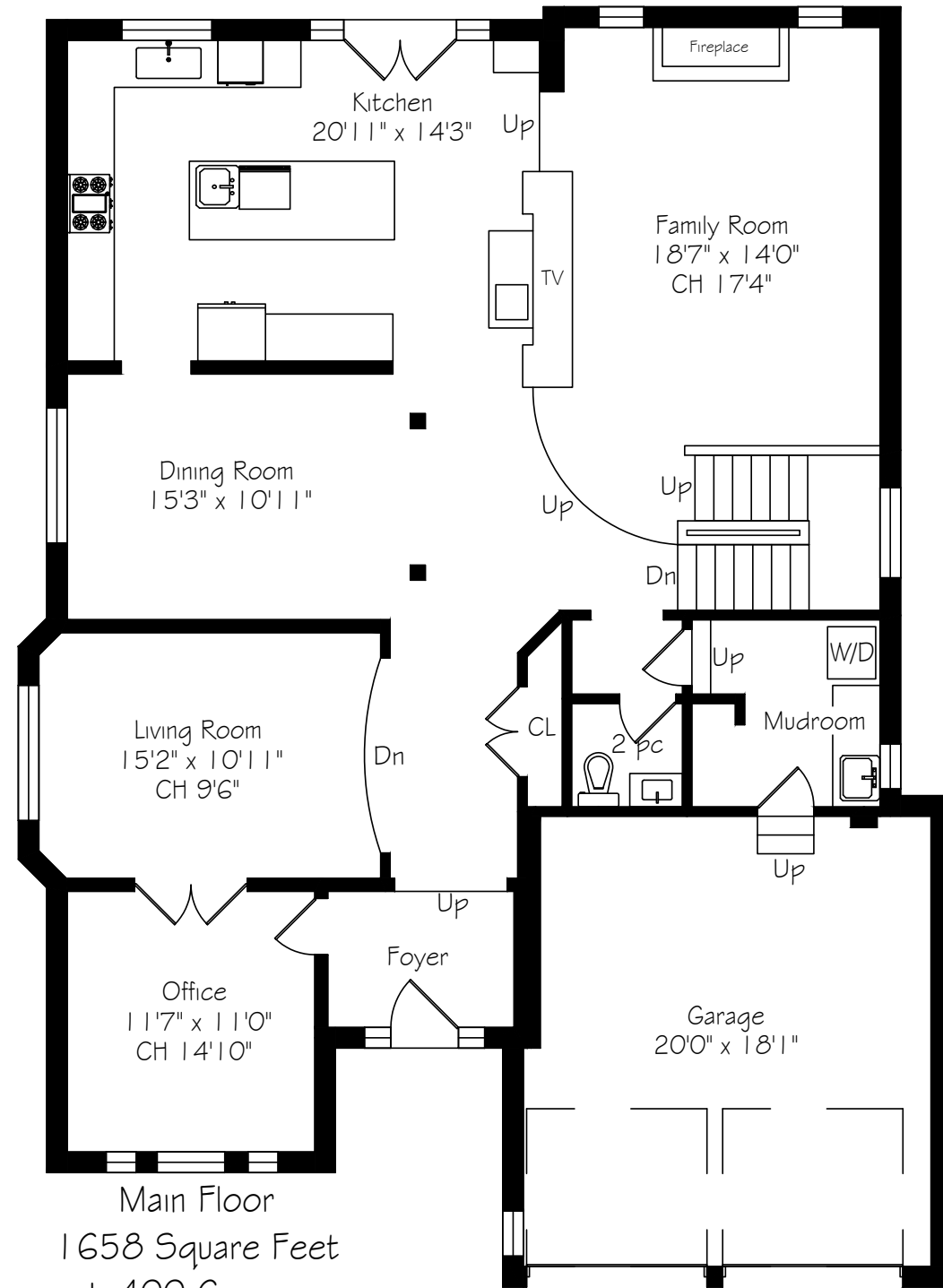
## Backyard

Equally impressive is the home's exceptional outdoor living experience, where extensive landscaping transforms both the front and backyard into a private resort-inspired retreat. The exposed aggregate driveway and manicured front gardens create striking curb appeal, while the backyard has been thoughtfully designed for seamless outdoor entertaining and relaxation. Composite decking with built-in speakers and outdoor heaters extends the living space beyond the interior, creating the perfect setting for gatherings throughout the seasons. The stunning pool with cascading waterfalls, hot tub and beautifully curated landscaping offer a luxurious atmosphere and incredible privacy which is rarely found in a family neighbourhood setting.





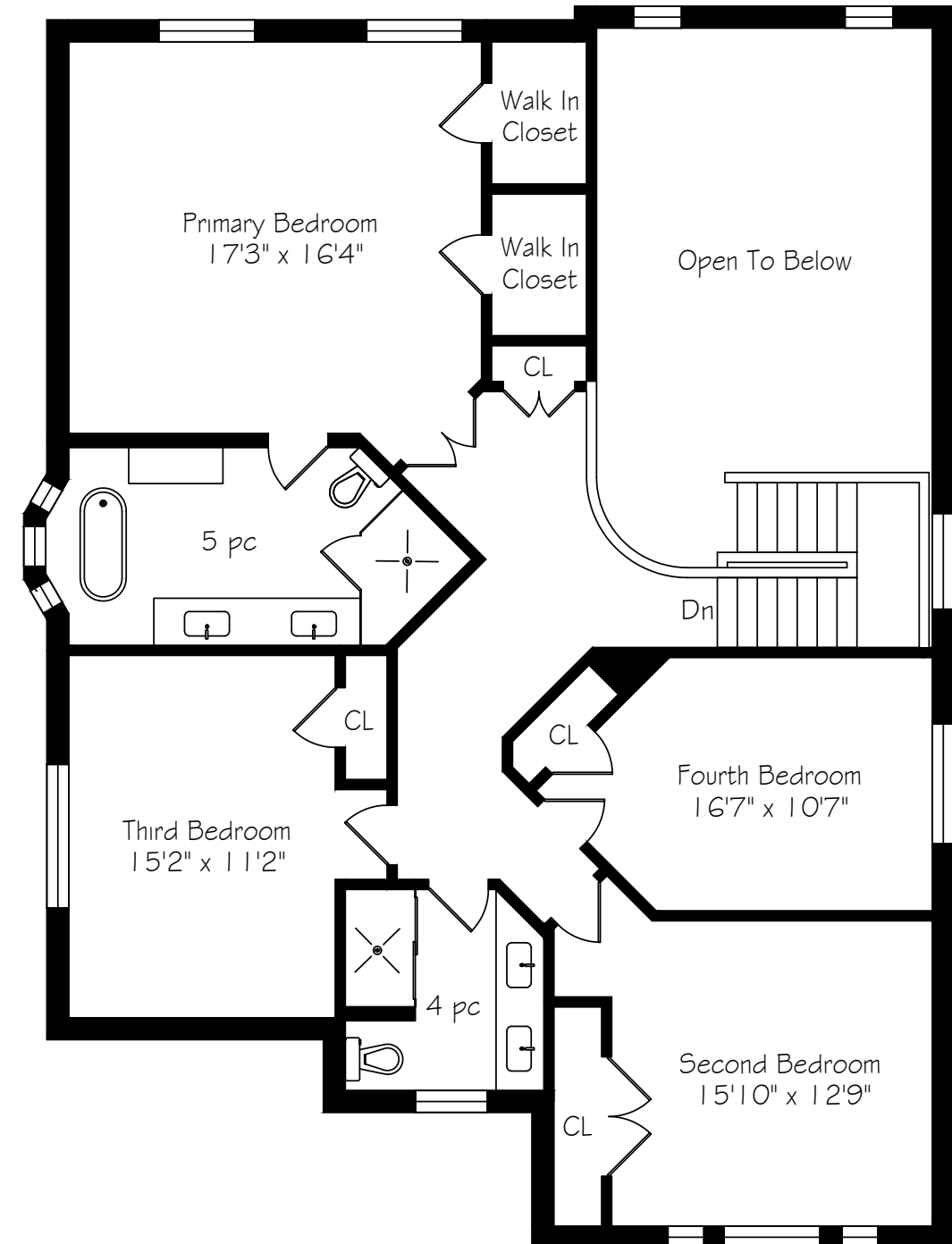
## Main Level Floor Plan



Main Floor  
1658 Square Feet  
+ 400 Garage

\*Room sizes should be considered approximate since measurements are subject to certification.

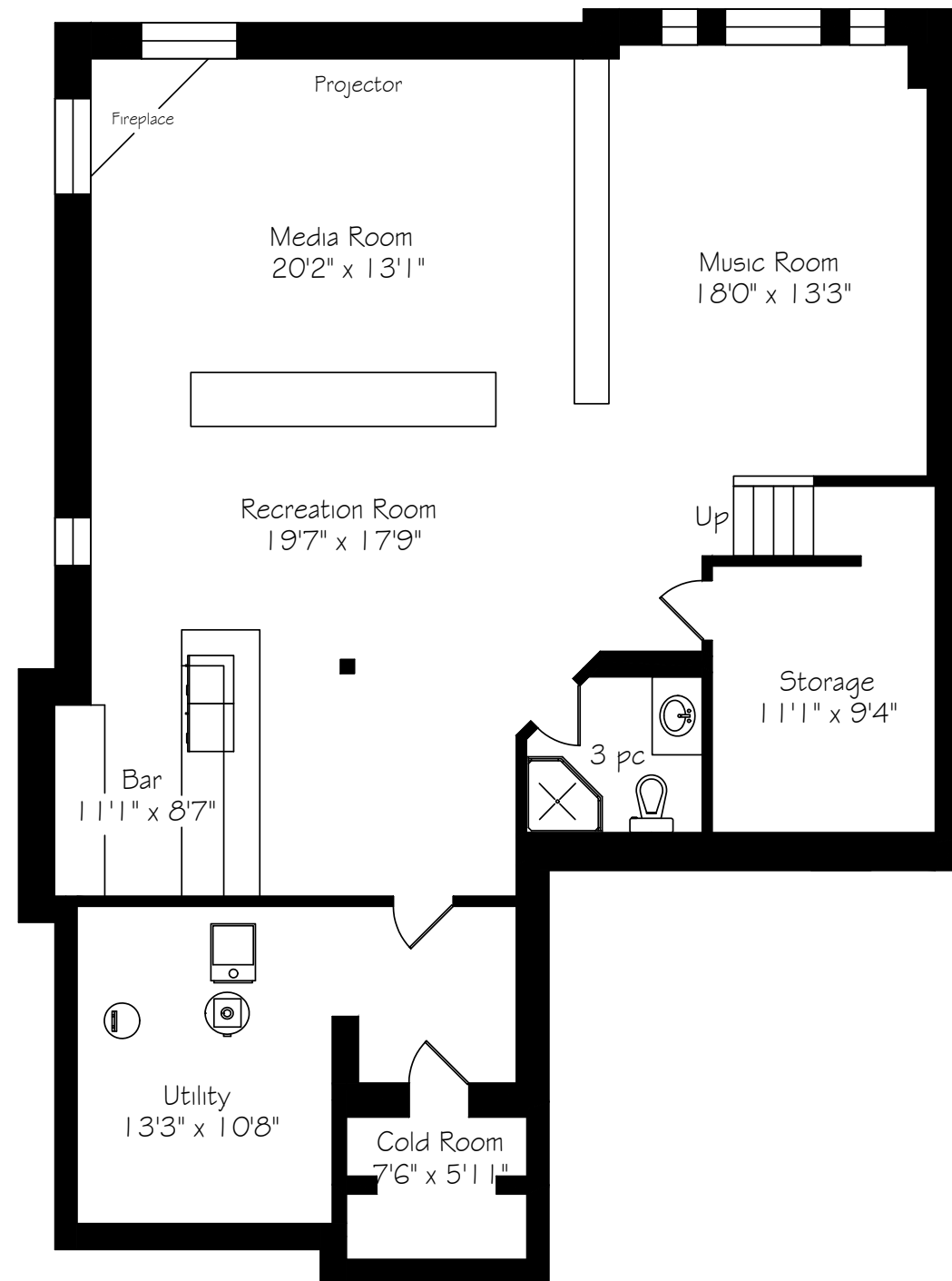
## Second Level Floor Plan



Second Floor  
1530 Square Feet

\*Room sizes should be considered approximate since measurements are subject to certification.

## Lower Level Floor Plan



Lower Level  
1704 Square Feet

\*Room sizes should be considered approximate since measurements are subject to certification.



## About The Neighbourhood

Joshua Creek is an upscale North Oakville community where luxury living meets natural beauty. Defined by its ravine setting, newer homes and convenient location, the neighbourhood offers easy access to Toronto, Mississauga and major highways. Residents also appreciate its proximity to excellent schools, shopping, and green spaces, making Joshua Creek one of Oakville's most sought-after addresses north of Upper Middle Road.

Life here feels polished yet relaxed. Trails wind through the ravine, offering opportunities for walking, cycling, or simply taking in the scenery. A favourite ritual is spending time at Joshua Creek Park, where residents gather to enjoy open green space and the calm of the outdoors, a reminder of the balance this community strikes between modern living and natural retreat.



**GoodaleMillerTeam**  
CENTURY 21 MILLER REAL ESTATE LTD. BROKERAGE

905.338.2121 | [GoodaleMillerTeam.com](http://GoodaleMillerTeam.com)