

A two-story house with a brick first floor and white siding second floor. The house features a large white-framed window on the left side of the brick section and a white garage door on the right. The second floor has two windows with blue shutters. A large evergreen shrub is positioned in the front yard between the brick and white sections. The driveway is paved and has a concrete curb with a small black lamp post. The sky is overcast.

GMT

557 Trafford Crescent  
Oakville

## Welcome to 557 Trafford Crescent

4 level side split on a quiet, kid-friendly crescent in west Oakville. 60 x 125 lot. Furnace and air conditioner replaced in 2023. Windows done in last 8 years. 3 bedrooms upstairs. Walkout from family room to covered back patio, nice place to bbq and entertain. Hardwood flooring on top 2 levels. Clever dog run setup. Lots of new development in the area. Quick access to highway and Bronte GO. Walk to rec centre. Quiet crescent in mature area in west Oakville.

### THE GOODALE MILLER TEAM

Listing Agents: Brad Miller, Kieran McCourt & Andrew Kaye



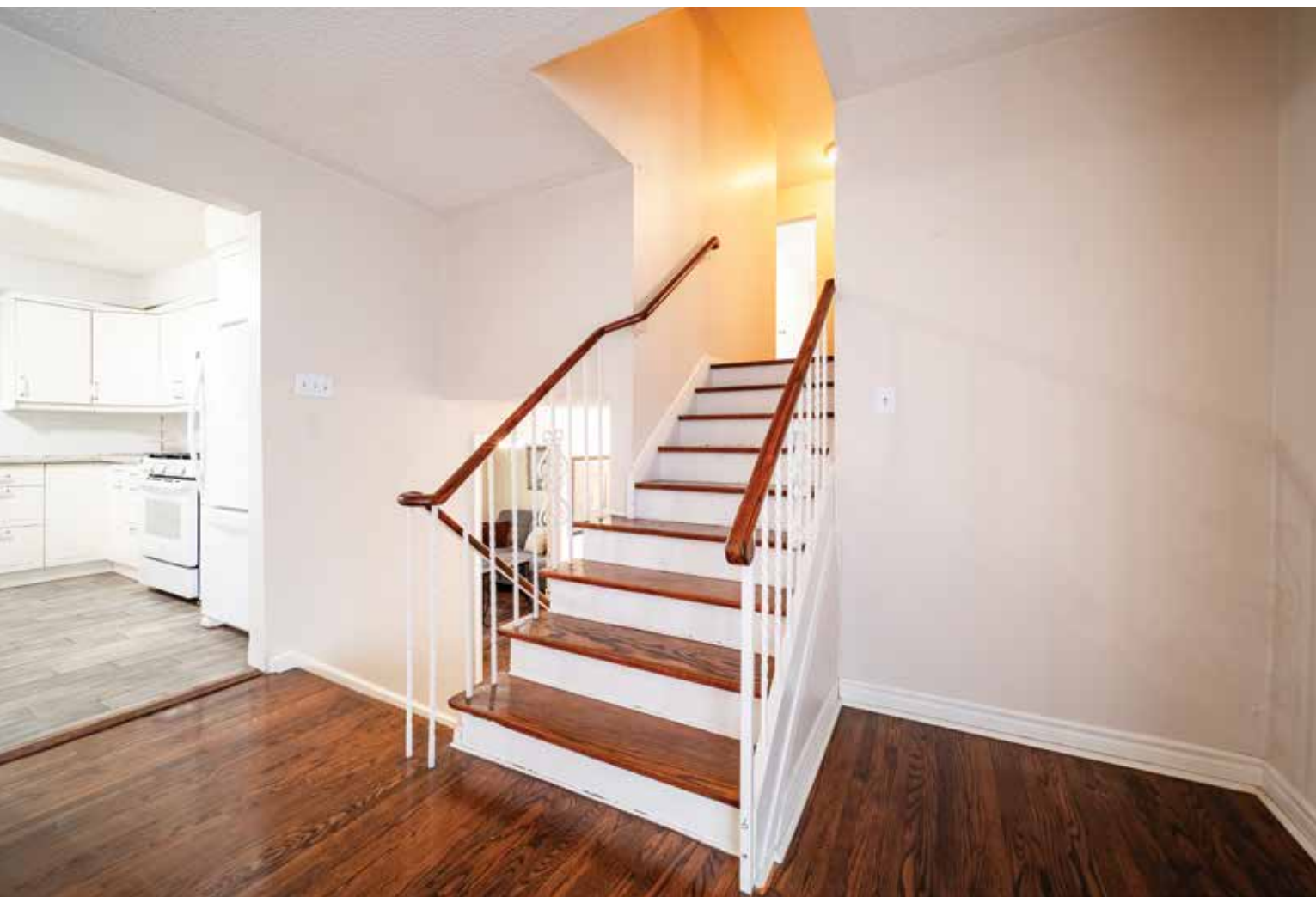
## Property Highlights

BEDS	3
BATHS	1.1
LOT SIZE	110.19' x 70.17' x 126.17' x 60.10'
ABOVE GRADE	1,533 sq ft
TOTAL SQ FT	2,394 sq ft
TAXES	\$5,122 / 2026







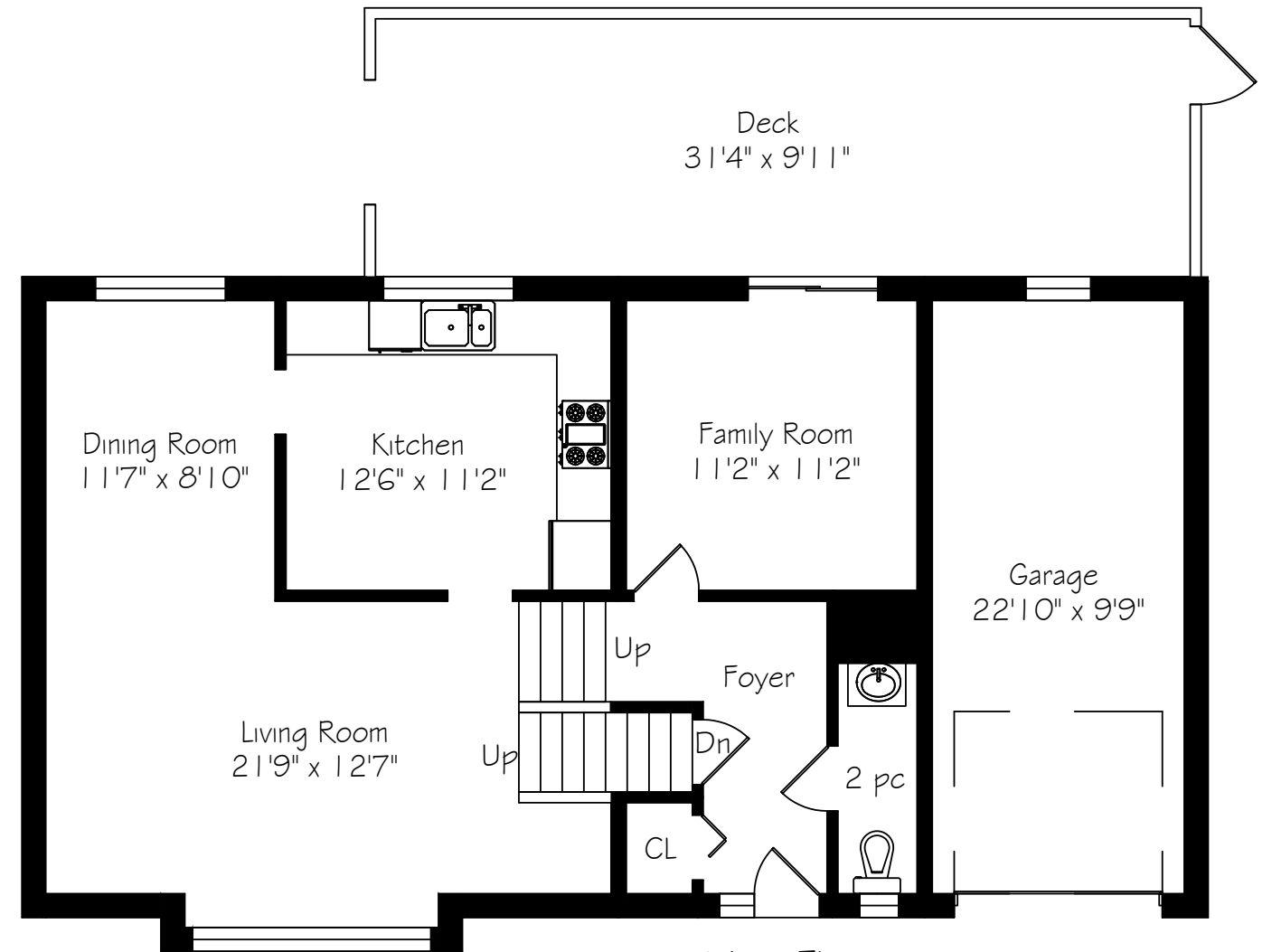








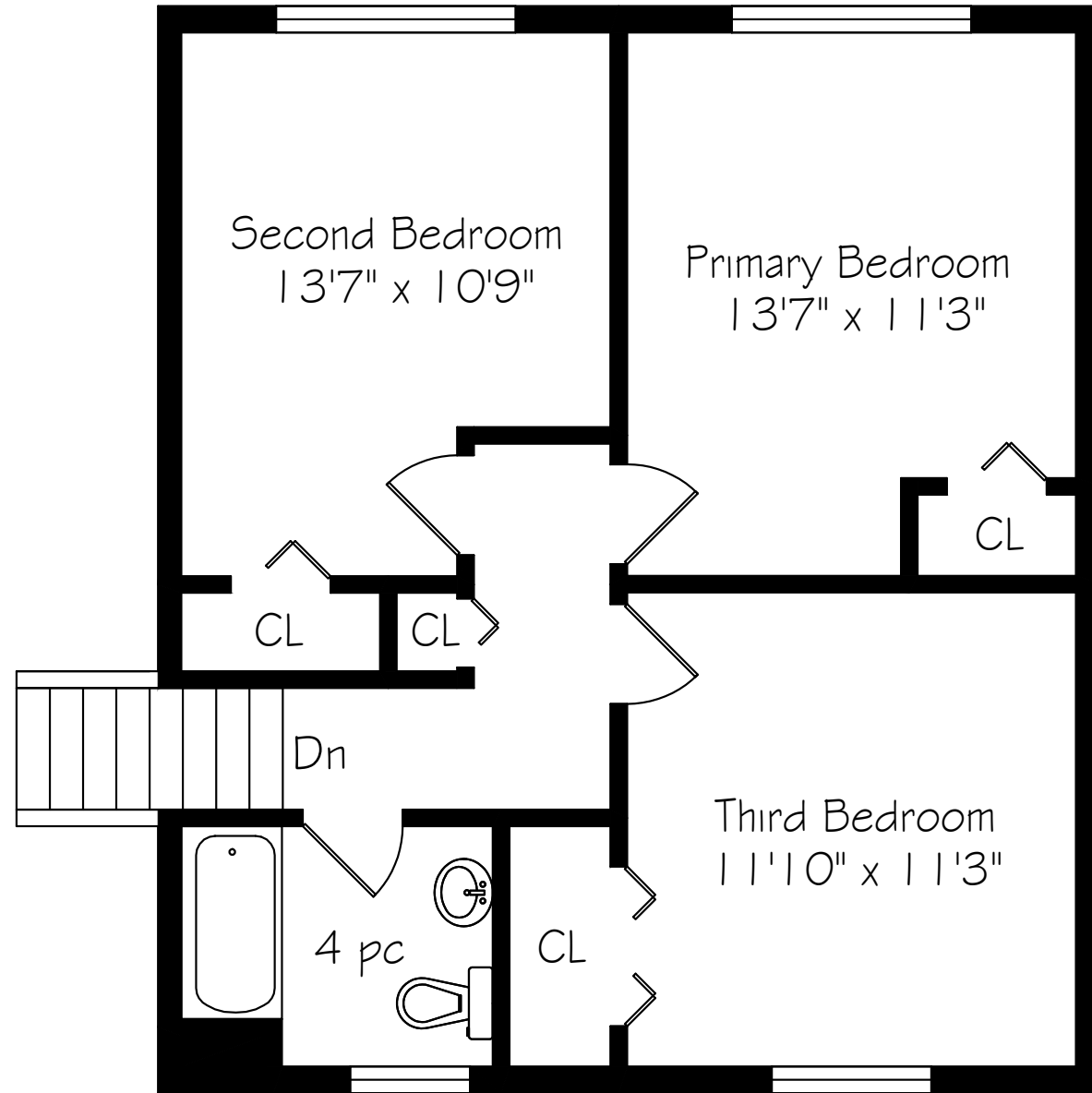
# Main Level Floor Plan



Main Floor  
876 Square Feet  
+ 261 Garage

\*Room sizes should be considered approximate since measurements are subject to certification.

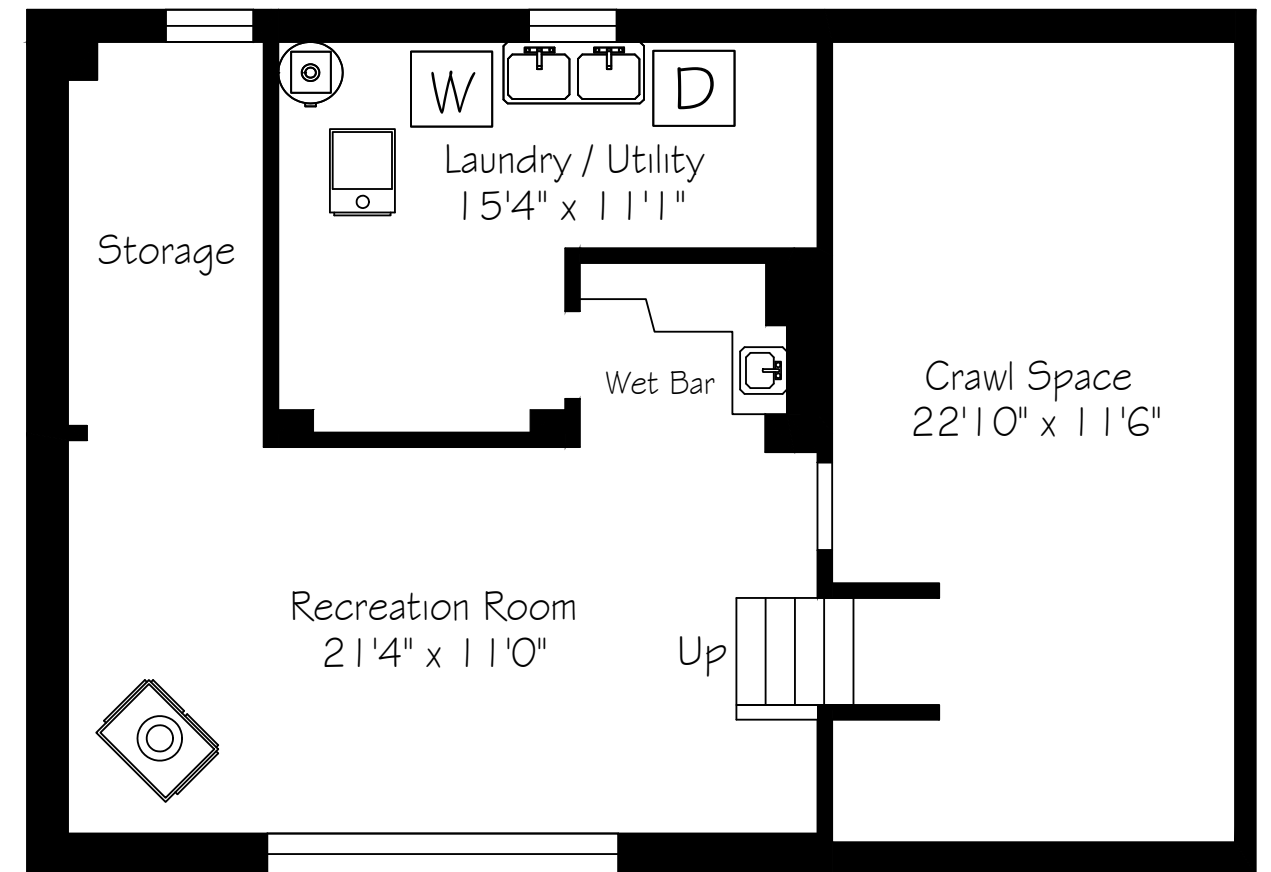
## Second Level Floor Plan



Second Floor  
657 Square Feet

\*Room sizes should be considered approximate since measurements are subject to certification.

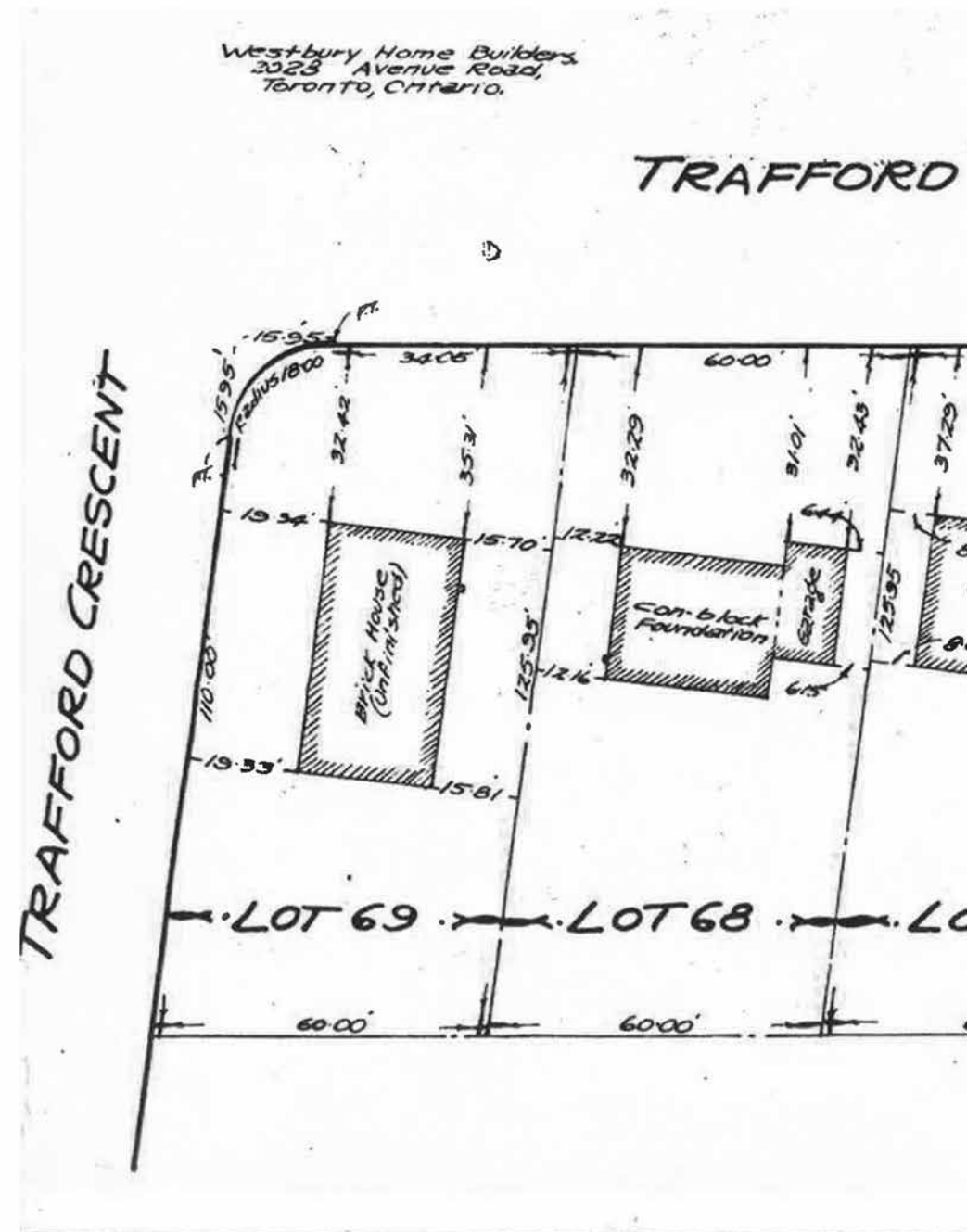
## Lower Level Floor Plan



Lower Level  
861 Square Feet

\*Room sizes should be considered approximate since measurements are subject to certification.

## Survey



## About The Neighbourhood

West Oakville is a welcoming community that combines convenience, green space and a strong neighbourhood feel. Ideally located south of the QEW, it offers easy access to downtown Oakville, Bronte Village and Lake Ontario, along with popular destinations like the Oakville YMCA and Queen Elizabeth Park Community and Cultural Centre. Mature trees and generous green spaces add to its established charm, making it a place where residents feel both connected and at ease.

Life in West Oakville balances accessibility with a relaxed pace. Neighbours gather in local parks, weekends are spent exploring nearby shops and dining in Bronte, and families and professionals alike enjoy the short commute options. Neighbourhood gatherings at Queen Elizabeth Park Community and Cultural Centre or weekends spent exploring Bronte's waterfront trails add to its welcoming character.



**GoodaleMillerTeam**  
CENTURY 21 MILLER REAL ESTATE LTD. BROKERAGE

905.338.2121 | [GoodaleMillerTeam.com](http://GoodaleMillerTeam.com)