

TOPOGRAPHIC SURVEY OF
LOT 7,
REGISTERED PLAN M-254
TOWN OF OAKVILLE
 REGIONAL MUNICIPALITY OF HALTON



ALEX MARTON LTD.
 ONTARIO LAND SURVEYORS

© COPYRIGHT 2019

THE REPRODUCTION, ALTERATION OR USE OF THIS REPORT,
 IN WHOLE OR PART, WITHOUT THE EXPRESS PERMISSION OF
 ALEX MARTON LTD. IS STRICTLY PROHIBITED.

METRIC

DISTANCES SHOWN ON THIS PLAN ARE IN METRES
 AND CAN BE CONVERTED TO FEET BY DIVIDING BY 0.3048.

BENCHMARK NOTE

ELEVATIONS SHOWN HEREON ARE GEODETIC AND ARE REFERRED
 TO THE CITY OF OAKVILLE BENCHMARK No.49
 HAVING AN ELEVATION OF 99.3297. METERS.
 LOCATED ON NORTHWEST CORNER OF WINGWALL ON WEST
 SIDE OF DRIVEWAY ENTRANCE TO #2265 CORNWALL ROAD (FIREHALL #2).
 THE BENCHMARK IS ON TOP OF THE SECOND COURSE OF BRICK.

LEGEND

SYMBOL	DENOTES	DESCRIPTION
MH	MANHOLE	MANHOLE
SWI	INTERLOCKING PAVED	INTERLOCKING PAVED
WV	WATER VALVE	WATER VALVE
CR	CENTERLINE	CENTERLINE
FH	FIRE HYDRANT	FIRE HYDRANT
BF	BOARD FENCE	BOARD FENCE
DS	DOOR SILL	DOOR SILL
CSW	CONCRETE SIDEWALK	CONCRETE SIDEWALK
HM	HYDRO METER	HYDRO METER
CLF	CHAIN LINK FENCE	CHAIN LINK FENCE
PL	PLANTER	PLANTER
TB	TOP OF BANK	TOP OF BANK
GM	GAS METER	GAS METER
PIN	PROPERTY IDENTIFIER NUMBER	PROPERTY IDENTIFIER NUMBER
Ø	DIAMETER	DIAMETER
⊙	DECIDUOUS TREE	DECIDUOUS TREE
⊛	CONIFEROUS TREE	CONIFEROUS TREE

SURVEYOR'S CERTIFICATE

I CERTIFY THAT:
 THE FIELD OBSERVATIONS REPRESENTED ON THIS PLAN
 WERE COMPLETED ON THE 10TH DAY OF JULY, 2019.

JULY 15, 2019
 DATE

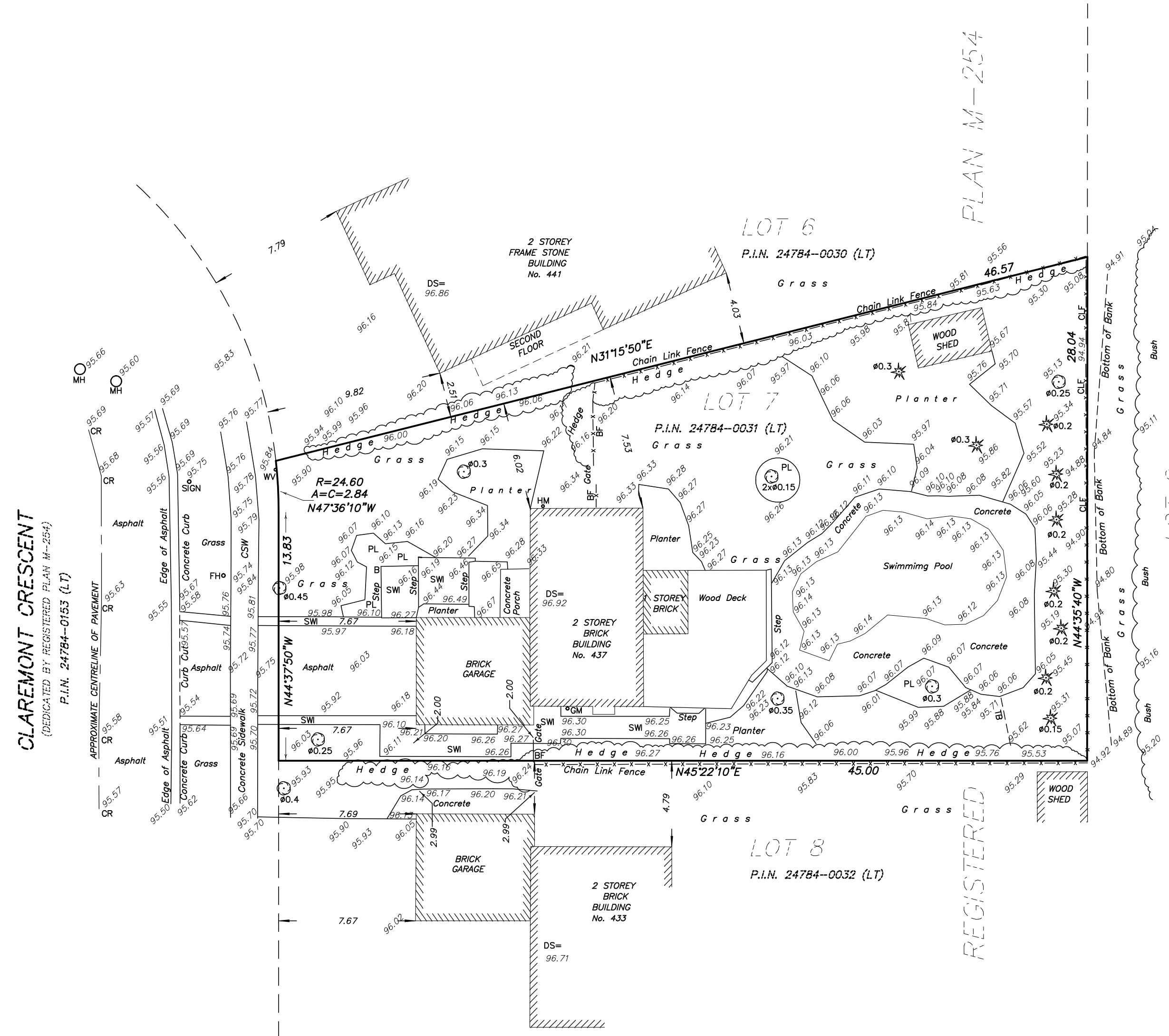
ALEX MARTON
 ONTARIO LAND SURVEYOR

ALEX MARTON LIMITED
 ONTARIO LAND SURVEYORS
 180 APPLEWOOD CRESCENT, UNIT 8,
 CONCORD, ONTARIO, L4K 4H2
 PHONE: 905-879-9889 FAX: 905-879-0770
 E-MAIL: alex@amsurveying.ca
 WEBSITE: www.amsurveying.ca

PARTY CHIEF: P.C.	FILE NAME: 2019-137.DWG
DRAWN : I.K.	PLOT SCALE: 1:200
CHECKED : A.M.	PROJECT No. 2019-137

CAUTION

THIS IS NOT A PLAN OF SURVEY AND SHALL NOT BE
 USED FOR MORTGAGE OR TRANSACTION PURPOSES.



CLAREMONT CRESCENT
 (DEDICATED BY REGISTERED PLAN M-254)
 P.I.N. 24784-0153 (LT)

PLAN M-254

CONCESSION 3, SOUTH OF DUNDAS STREET
 PART 1, PLAN 20R-10033
 P.I.N. 24784-0496 (LT)

REGISTERED