

GMT



517 Stafford Drive

517 Stafford Drive

Oakville

Welcome to 517 Stafford Drive

Stunning home upgraded and dressed up to the max. Beautiful French Chateau style curb appeal and extensively landscaped grounds. Luxurious finishes and attention to detail throughout. Big bright windows, custom cabinetry, loads of wall paneling and moldings, stylish stone and tile selections, hardwood herringbone flooring, integrated vents, skylight over the central staircase. Beautiful interior design by Mia Coroza. Landscaping by Kanawi Landscaping. Top trades from around the GTA.



Property Highlights

BEDS	4+1
BATHS	5.1
LOT SIZE	69.23' x 123.46' x 65.11' x 110.01'
ABOVE GRADE	3,265 sq ft
TOTAL SQ FT	5,471 sq ft
TAXES	\$6,220 / 2026



THE GOODALE MILLER TEAM

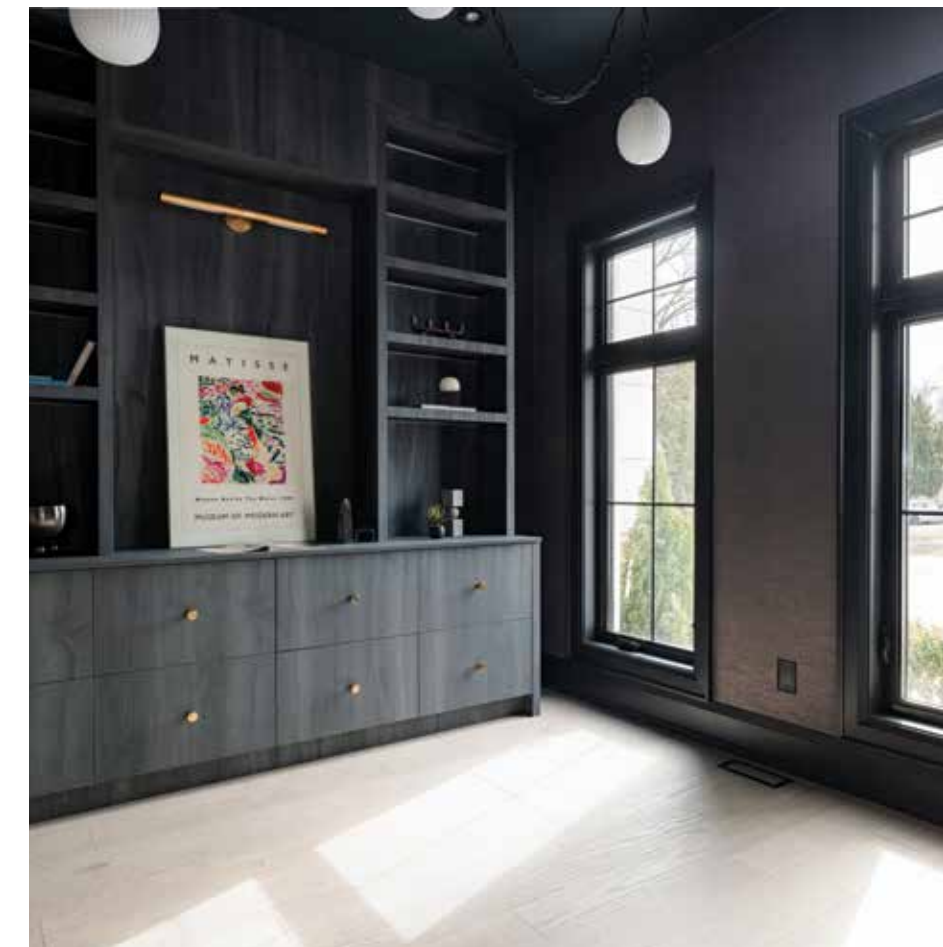
Listing Agents: Brad Miller, Kieran McCourt & Andrew Kaye

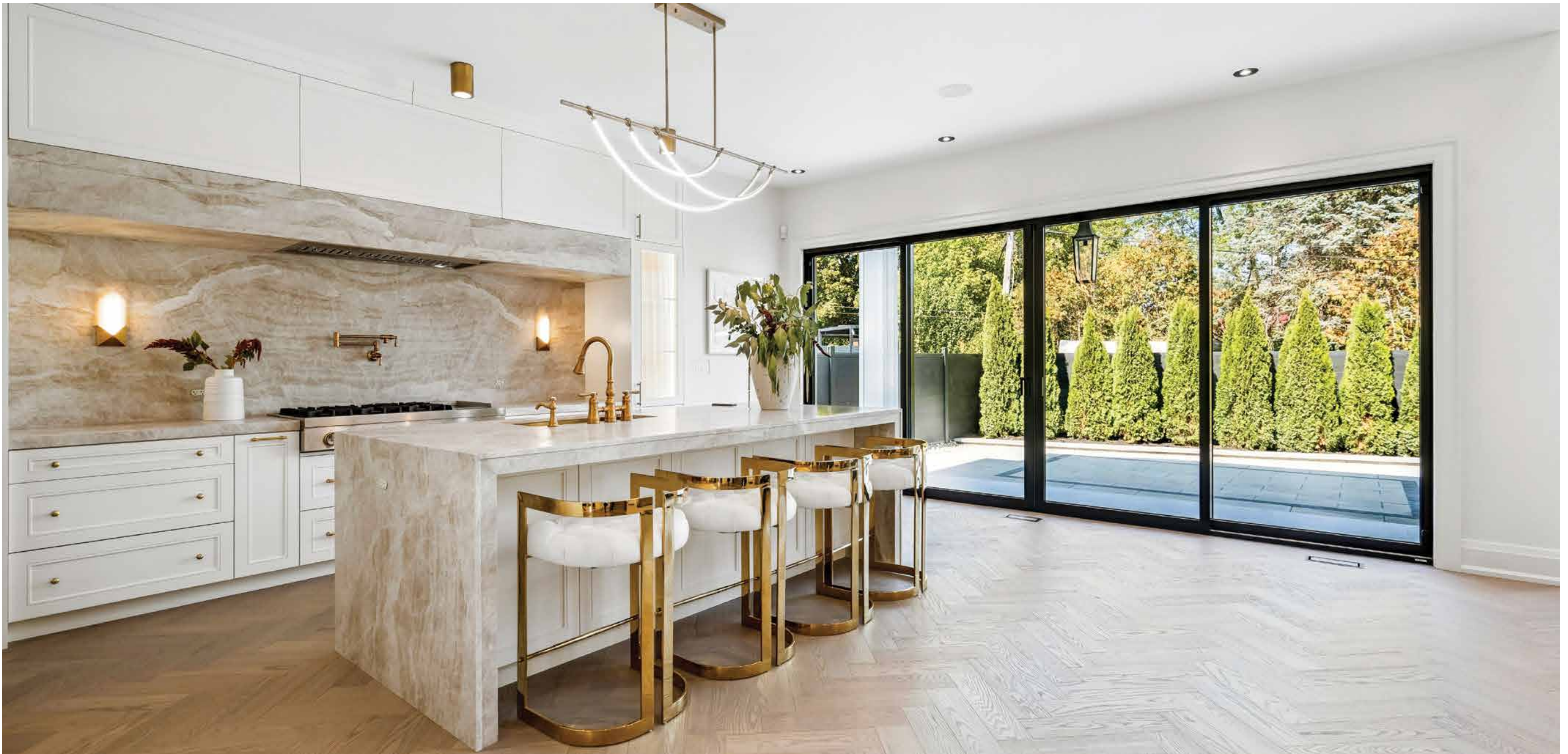


Main Level

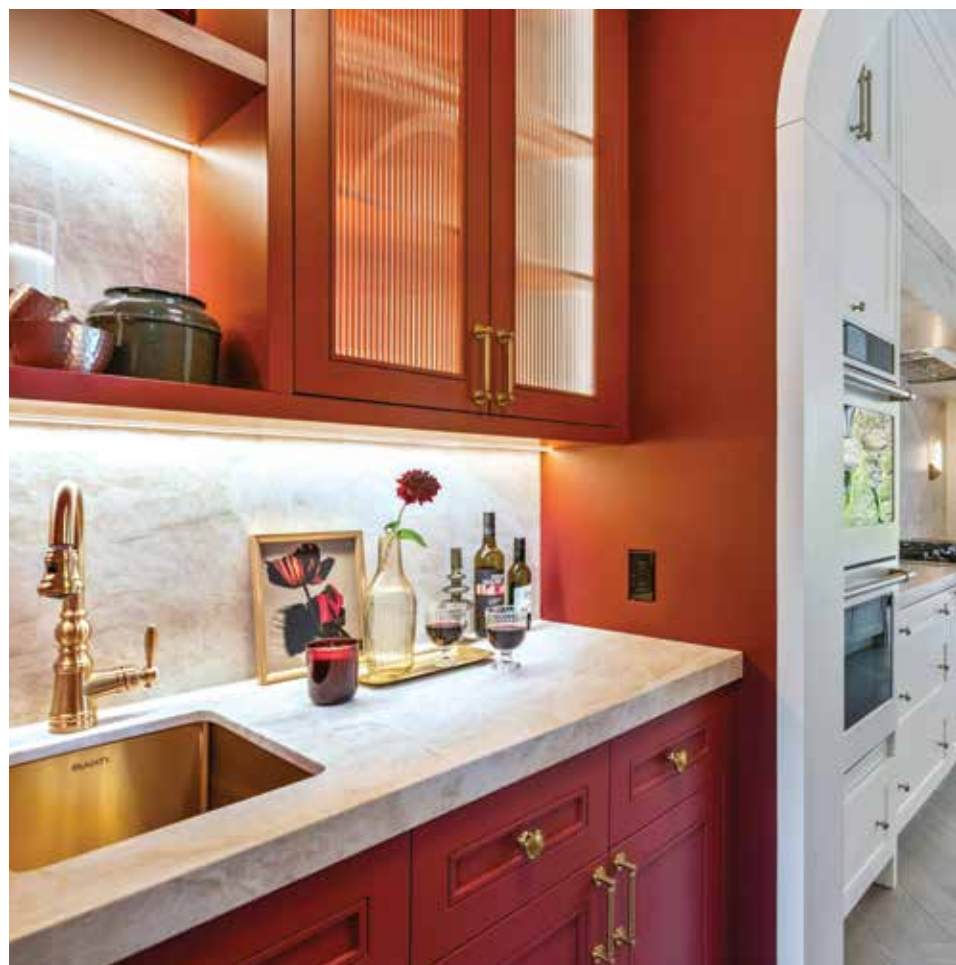
Mirage engineered oak flooring in herringbone. Red oak stairs with wrought iron railings by Deluxe Stairs. Gorgeous kitchen with leathered Taj Mahal natural stone quartzite for the counter-top and island. Walk through the servery with walk-in pantry to the dining room with built-in wine rack.

Bright 2 storey great room with massive windows and matte porcelain fireplace surround and custom ethanol fireplace. Stylish office with French door entry, built-in wall unit and decorative sconces.











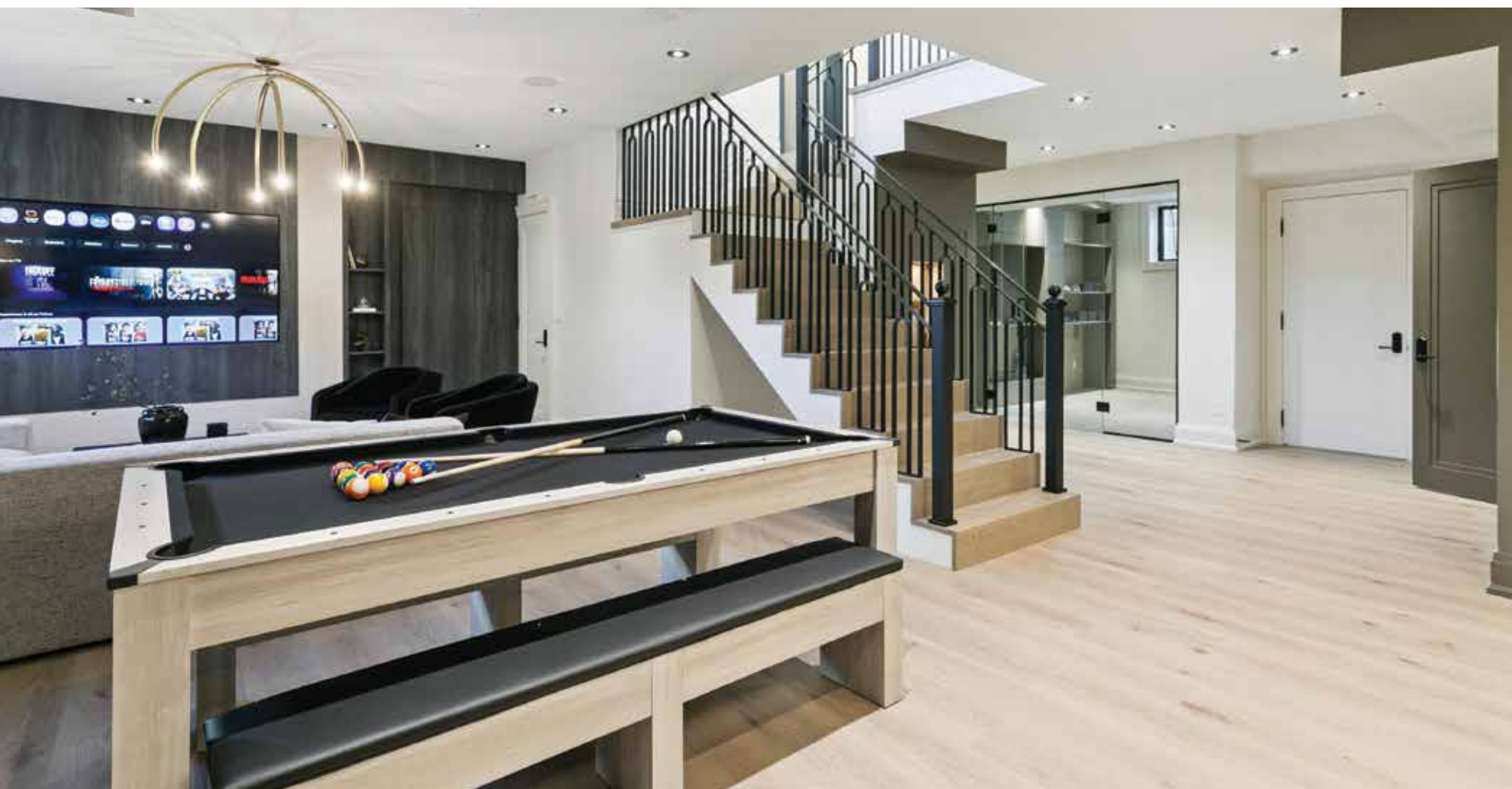
Second Level

All four bedrooms have their own en suites. Luxurious primary suite with fireplace, walk in closet finished with organizers, en suite bath with heated floors, Designer plumbing fixtures, stand alone tub and two sinks. Convenient laundry room with LG front load washer and dryer. Each of the remaining bedrooms has it's own distinct style. Closets have interior lighting on sensors.



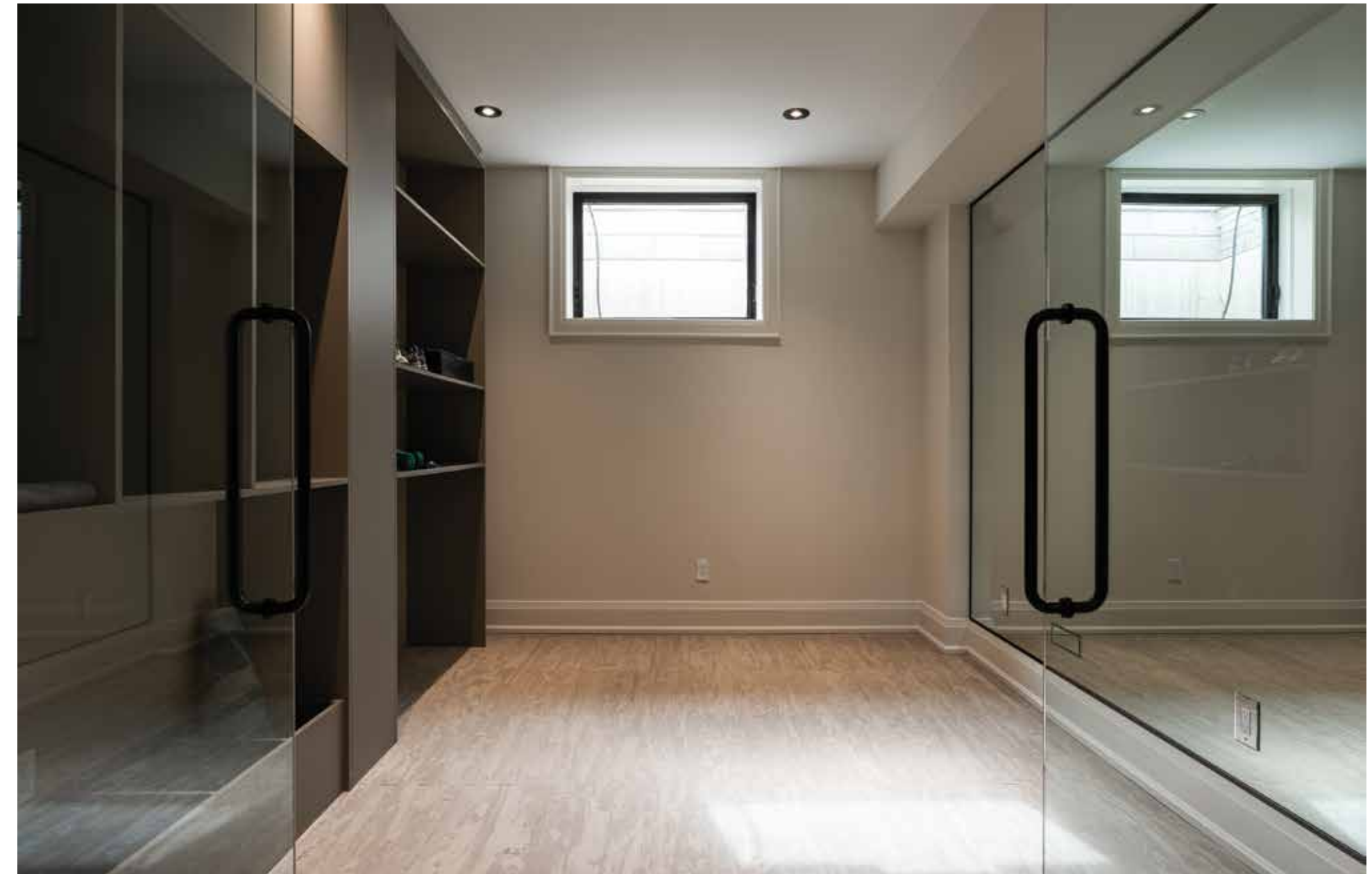






Lower Level

Everything you want is here and done well. 9' ceiling height and big bright window wells. Dramatic bar area with leathered Titanium Gold natural stone quartzite counter tops. Home theatre ideally situated in the quiet dark space excavated under the garage. Home gym with custom mats. 5th bedroom. 3 piece bath with curbless shower. Awesome rec room for entertaining. Custom white cedar sauna.



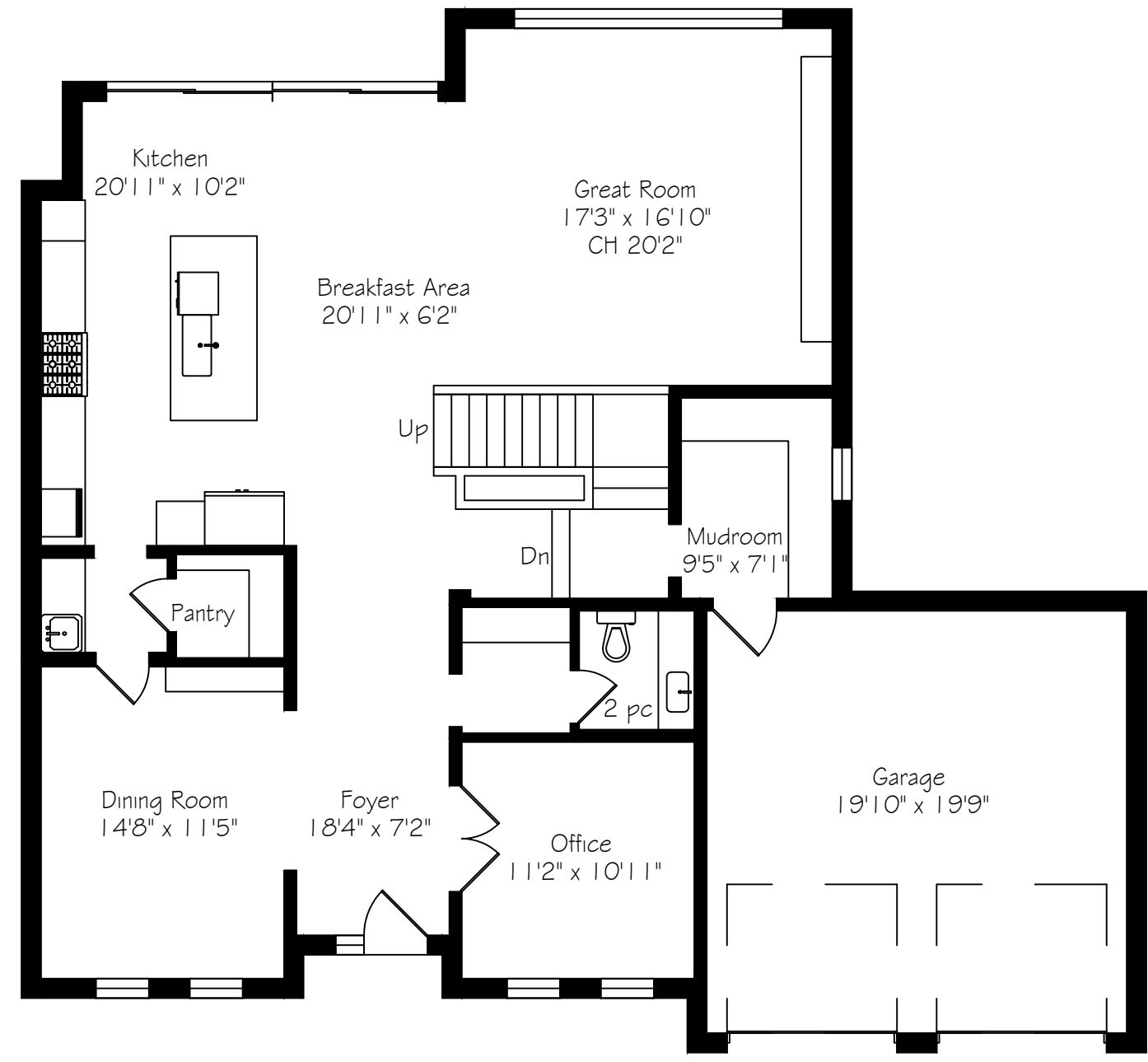


Backyard

Walkout from kitchen to covered porch. The setting is like a formal garden in Europe. Fountains dug 5 feet deep and finished in exterior porcelain. Loads of landscape lighting. Custom cabana with water and gas roughed-in. Aluminum composite fence. Walk-up from basement. Great atmosphere for entertaining.



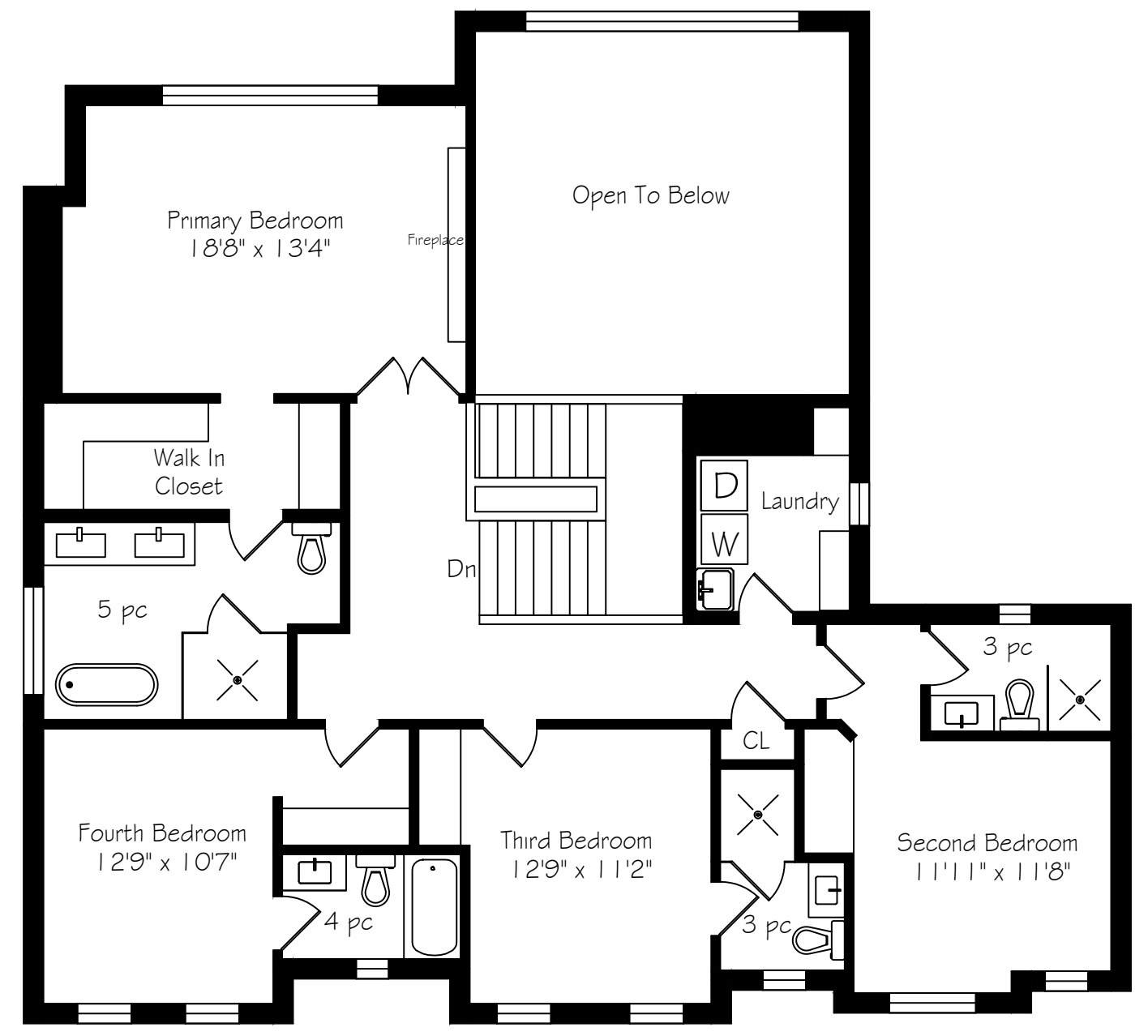
Main Level Floor Plan



Main Floor
1604 Square Feet
+ 445 Garage

*Room sizes should be considered approximate since measurements are subject to certification.

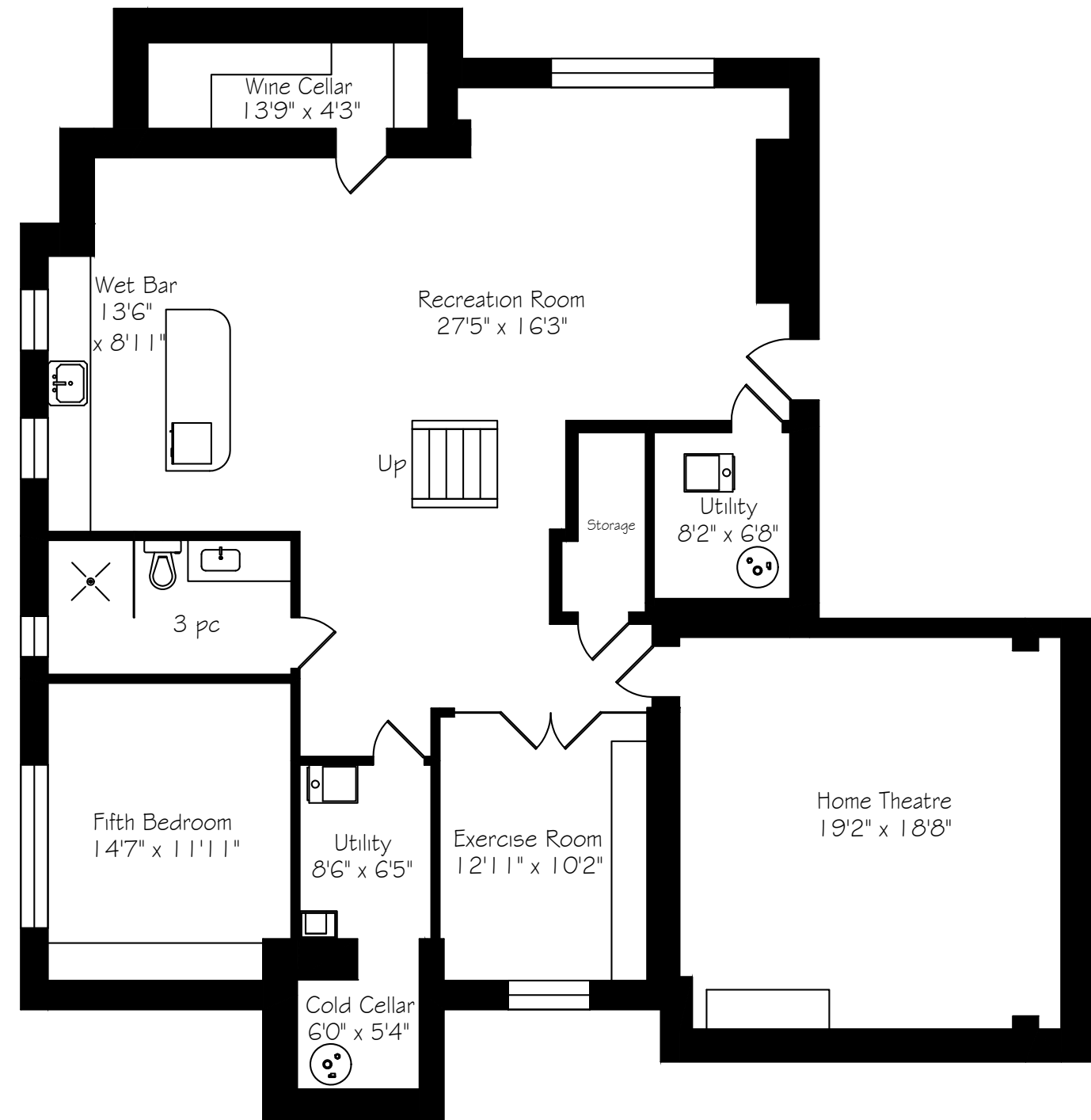
Second Level Floor Plan



Second Floor
1661 Square Feet

*Room sizes should be considered approximate since measurements are subject to certification.

Lower Level Floor Plan



Lower Level
2206 Square Feet

*Room sizes should be considered approximate since measurements are subject to certification.



About The Neighbourhood

West Oakville is a welcoming community that combines convenience, green space and a strong neighbourhood feel. Ideally located south of the QEW, it offers easy access to downtown Oakville, Bronte Village and Lake Ontario, along with popular destinations like the Oakville YMCA and Queen Elizabeth Park Community and Cultural Centre. Mature trees and generous green spaces add to its established charm, making it a place where residents feel both connected and at ease.

Life in West Oakville balances accessibility with a relaxed pace. Neighbours gather in local parks, weekends are spent exploring nearby shops and dining in Bronte, and families and professionals alike enjoy the short commute options. Neighbourhood gatherings at Queen Elizabeth Park Community and Cultural Centre or weekends spent exploring Bronte's waterfront trails add to its welcoming character.



905.338.2121 | GoodaleMillerTeam.com