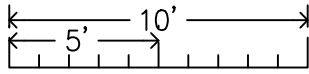
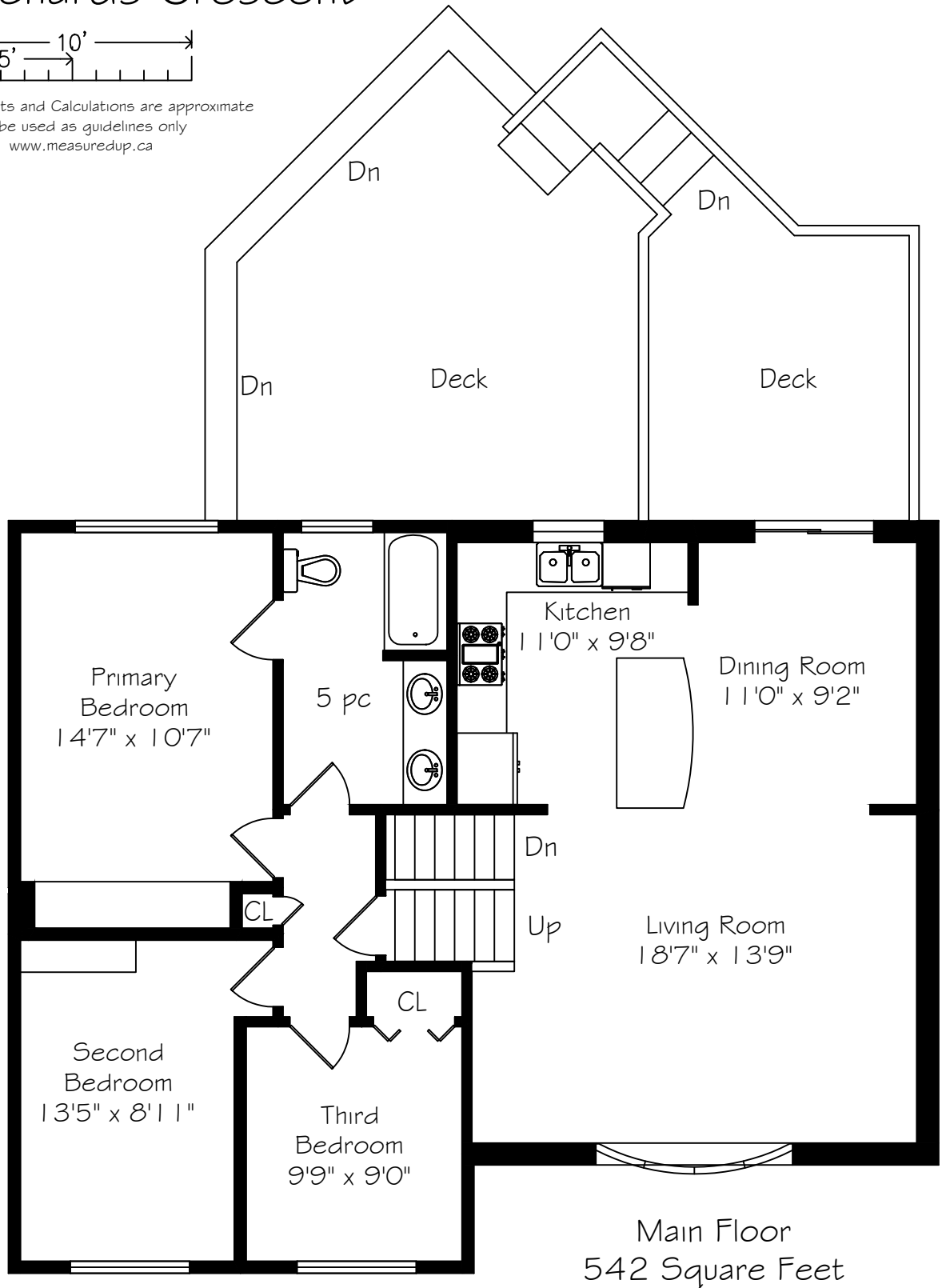


# 1259 Richards Crescent



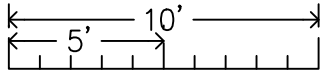
Measurements and Calculations are approximate  
To be used as guidelines only  
[www.measuredup.ca](http://www.measuredup.ca)



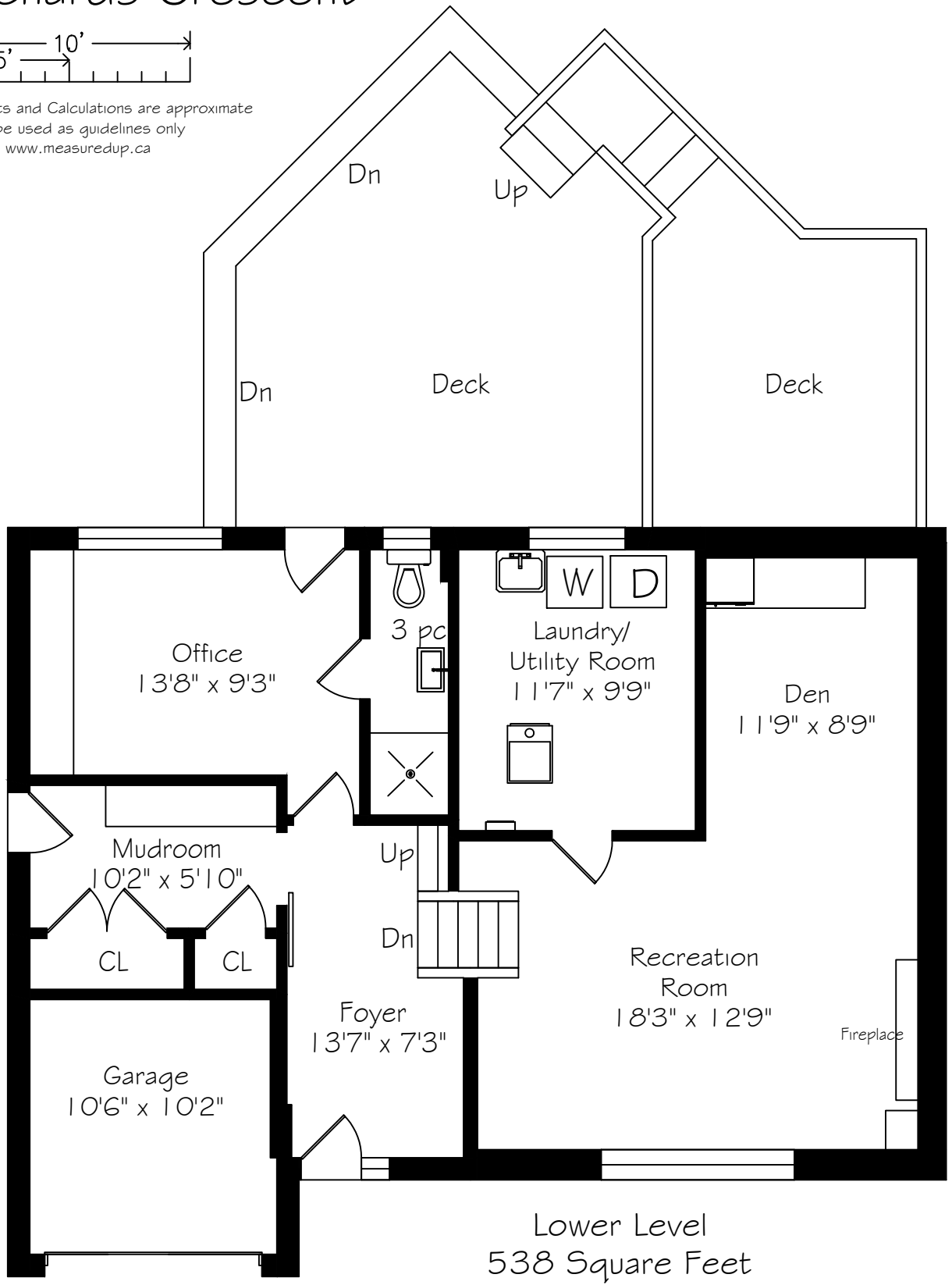
Second Floor  
615 Square Feet

Main Floor  
542 Square Feet

# 1259 Richards Crescent



Measurements and Calculations are approximate  
 To be used as guidelines only  
[www.measuredup.ca](http://www.measuredup.ca)



Entry Level  
 426 Square Feet  
 + 130 Garage

Lower Level  
 538 Square Feet