

A two-story house with a combination of stone and brick exterior. The house features a prominent arched window on the second floor and a matching arched entryway. A two-car garage is attached to the left side. The house is illuminated with warm, yellow lights, highlighting the textures of the stone and brick. The sky is a deep twilight blue, and some greenery is visible in the foreground and to the right.

GMT

3122

3122 Saddleworth Crescent  
Oakville

## Welcome to 3122 Saddleworth Crescent

Sitting on a pristinely landscaped lot in mature Bronte Creek, this polished executive family home blends contemporary refinement with everyday comfort. Ideally positioned, the rear lot is thoughtfully curated with intentional hardscaping framing the glistening pool, mixed topiary + perimeter gardens. Front-facing, mature greens + flat stone pavers lead to a stone portico + stately entry that opens to reveal to a refined, cohesive interior with elevated ceilings + expansive glazing. This is a sophisticated home in a distinguished + mature, family-oriented community with Oakville's natural trail system just steps away.

### THE GOODALE MILLER TEAM

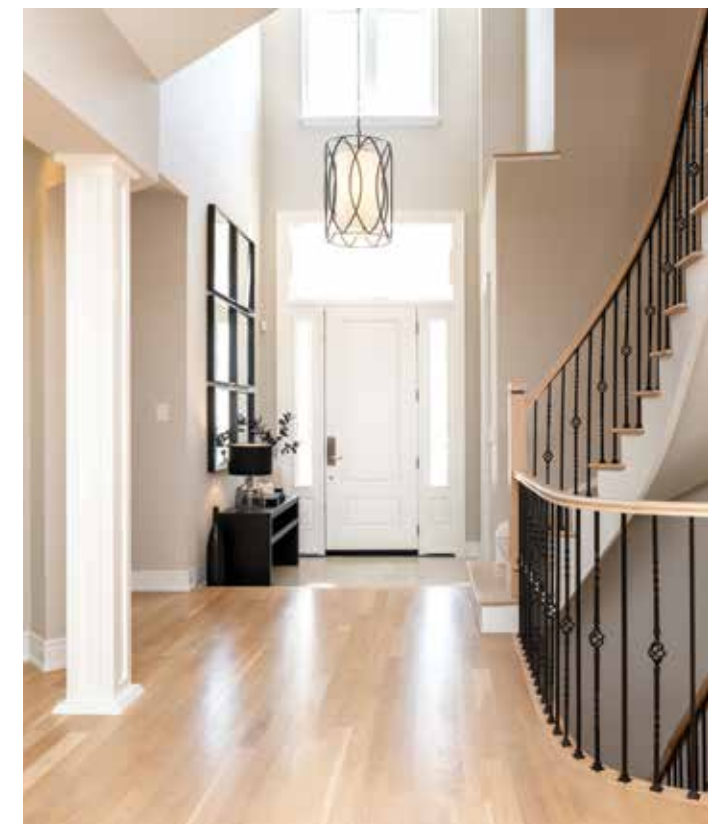
Listing Agents: Brad Miller, Kieran McCourt & Murray McKeage

SCAN TO VIEW THE  
DIGITAL BROCHURE



## Property Highlights

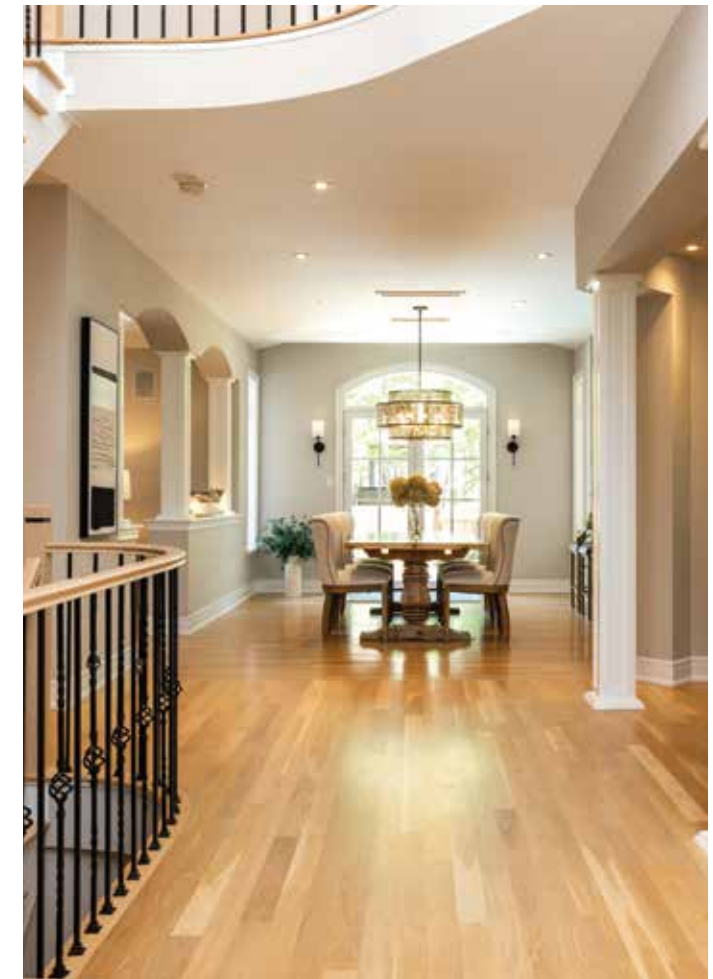
BEDS	4+1
BATHS	4.1
LOT SIZE	73.39 ft (front) x 100.09 ft (rear)
ABOVE GRADE	3,214 sq ft
TOTAL SQ FT	4,780 sq ft
TAXES	\$10,653 / 2026





## Main Level

Expansive glazing + elevated ceilings define bright, airy principal spaces. Detailed millwork and white oak hardwood + neutral marbled tile flow throughout. The central floor plan is grand + each principal living space flows seamlessly. The dining features stately milled column framing, tray ceiling with two-step crown + ample space for formal gatherings. The great room is anchored by wall-to-wall glazing with garden retreat views, a feature wall with stately cast-stone fireplace + dedicated media. The kitchen is well equipped + will appease the chef in the family. Open to the breakfast area with glass doors that lead to the rear stone patio, a serene spot overlooking the pool. The private home office is tucked away with lush garden views. A thoughtfully designed utility wing completes the level with mudroom, laundry + garage access.











## Second Level

The primary retreat impresses with double door entrance, pristine white oak flooring, milled gas fireplace + lounge area. Two walk-ins with built-in systems + a dreamy spa bath with glass shower + deep soaker tub. It's a refuge you long for after a long day. An additional three generously sized bedrooms feature elevated ceilings, expansive glazing + ample storage. One offers an ensuite + two share a well-appointed, marble-soaked bath.







## Lower Level

Strategically designed, the lower level is an extension of the refined living spaces on the upper levels. A generous level with ample windows + plush broadloom keeping it cozy. The rec room is an ideal family gathering space + open to the games/flex space, it's an expansive area easily suited to a family. An additional bedroom + full bath can accommodate guests + family alike. Ample storage throughout supports effortless organization.

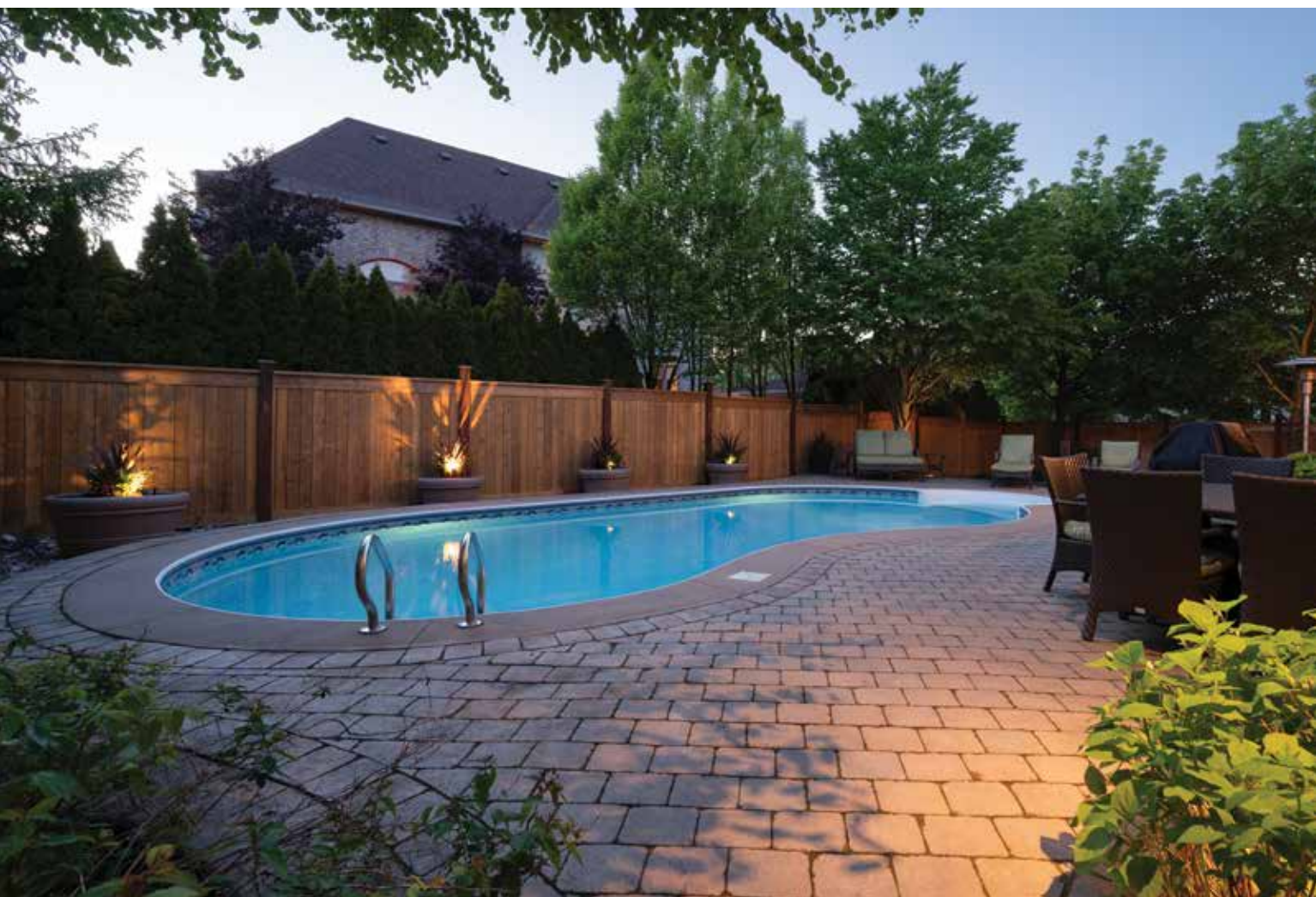
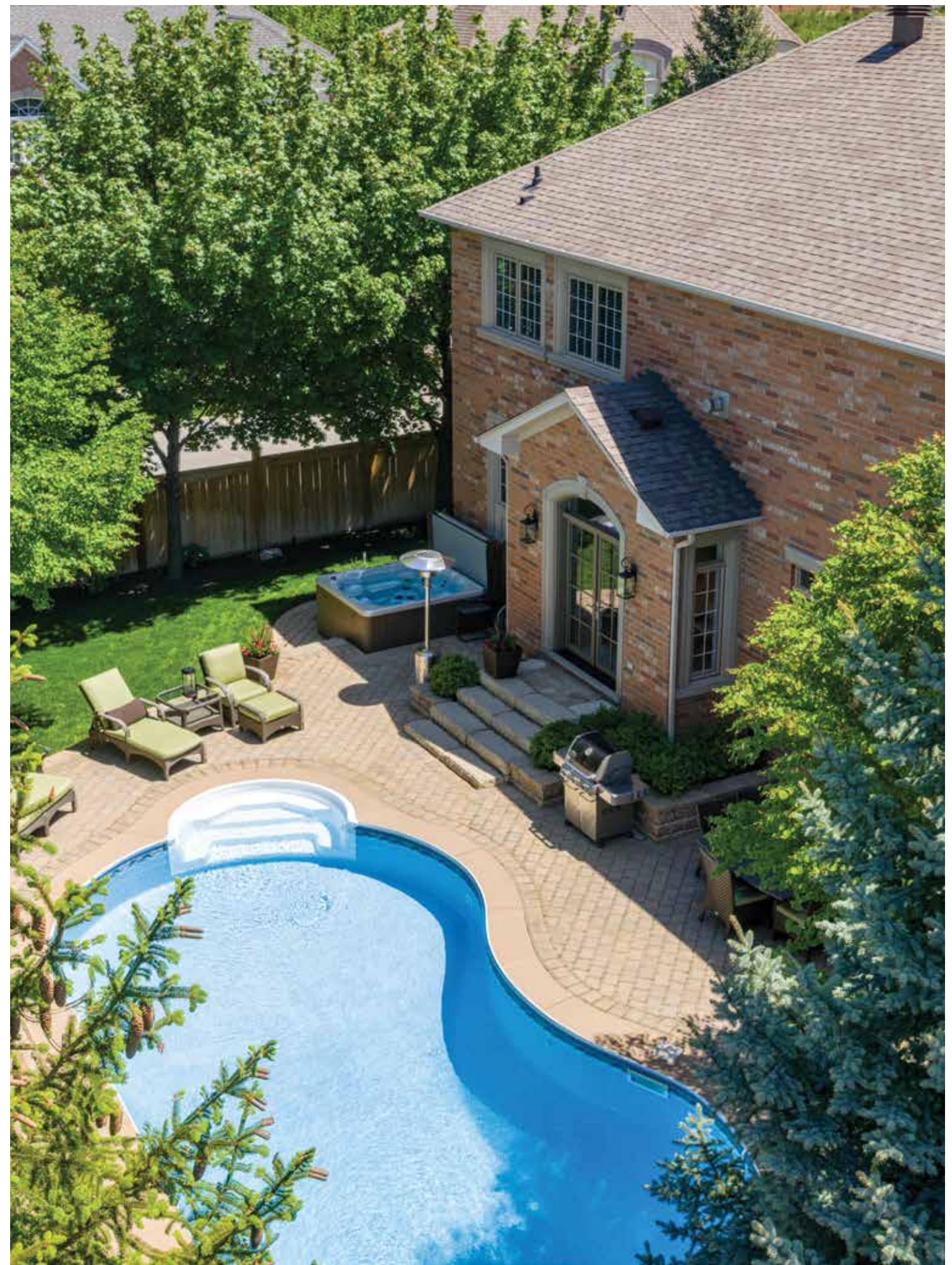




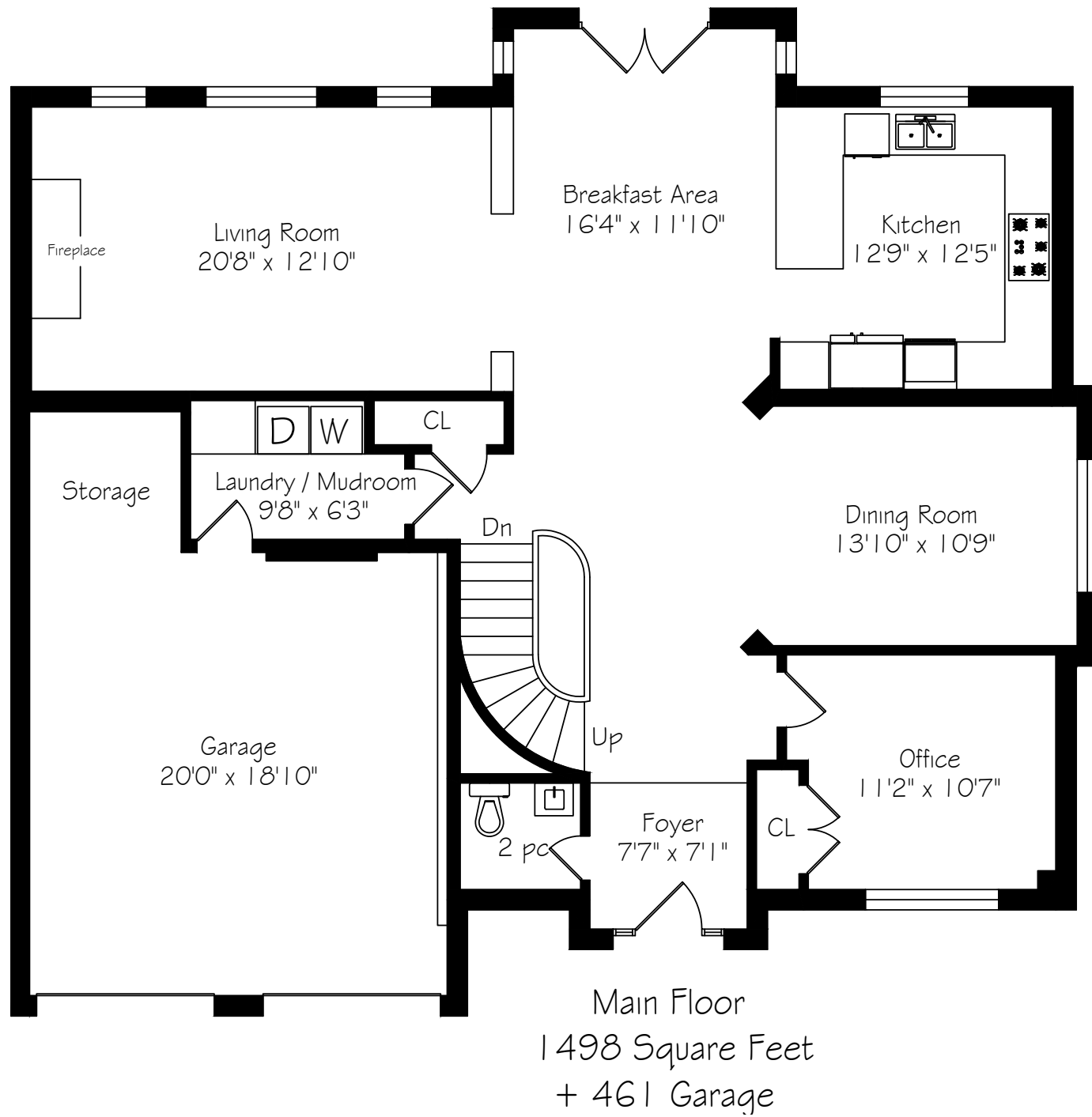
## Backyard

Thoughtfully designed for both relaxed living + effortless entertaining, pairing extensive natural stone + layered greenery for a polished outdoor setting. The inground pool anchors the yard, framed by lounge + conversation areas, creating a naturally inviting space. Established landscaping + framing gardens create a cohesive hub for family enjoyment.



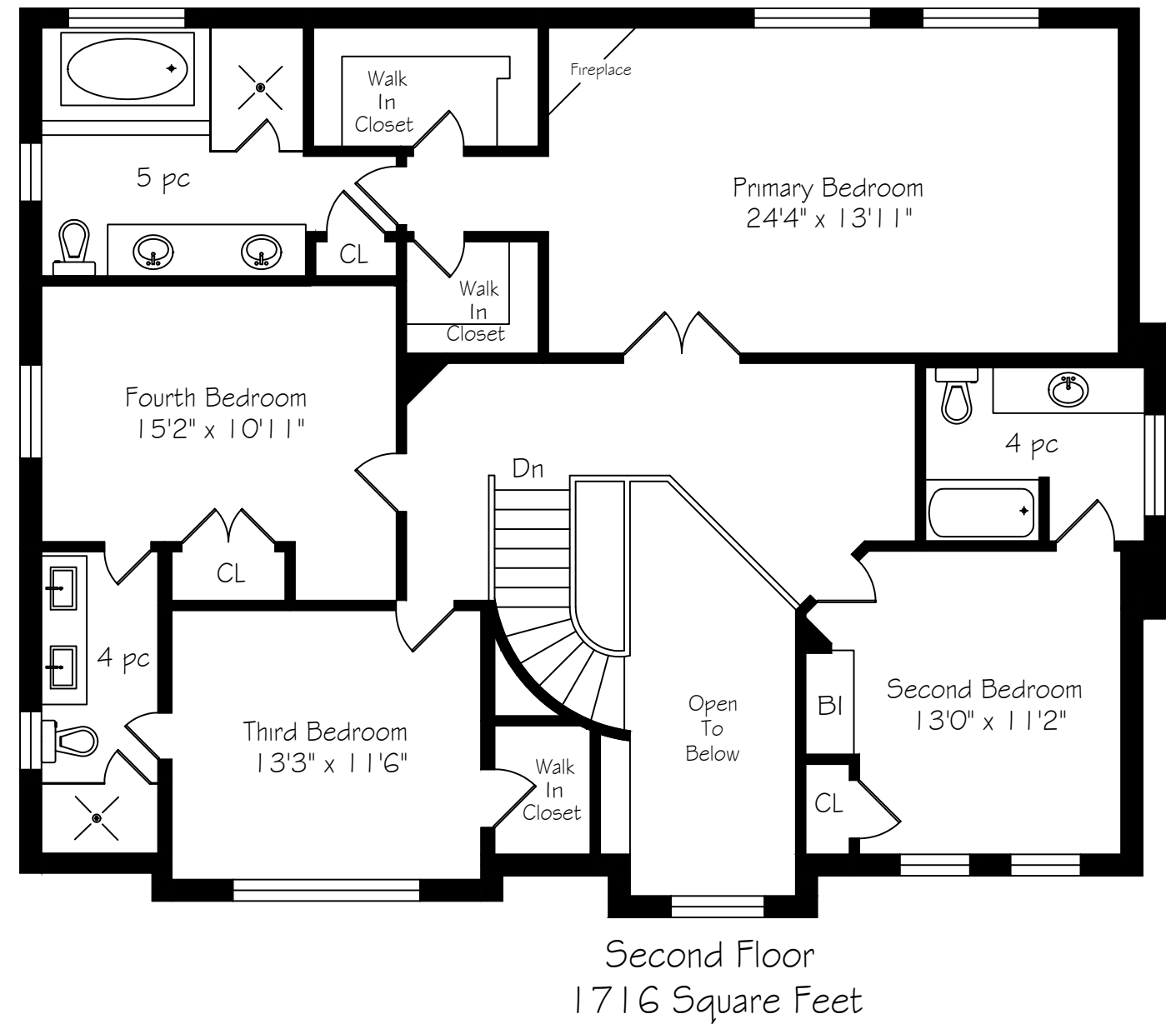


# Main Level Floor Plan



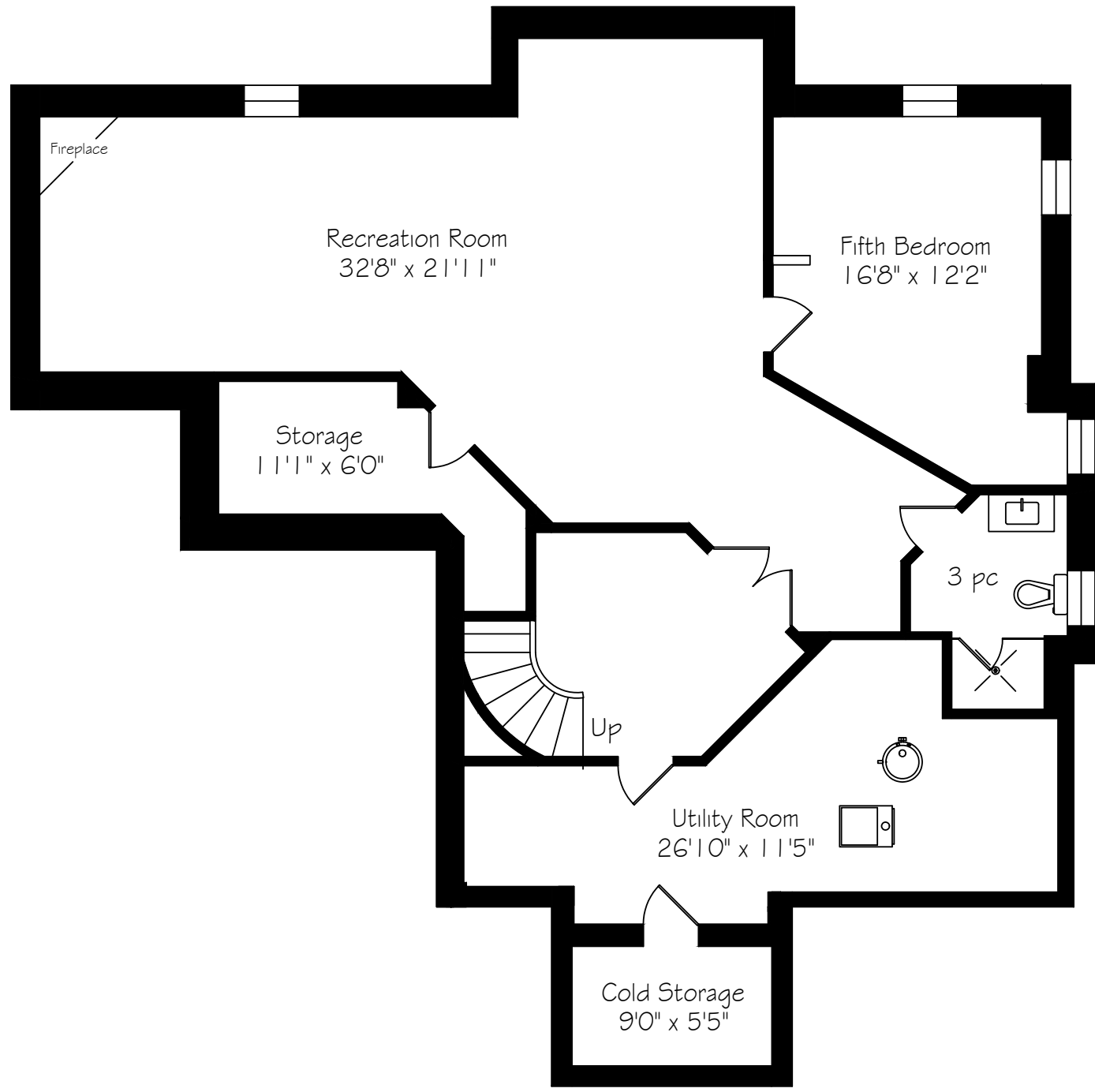
\*Room sizes should be considered approximate since measurements are subject to certification.

# Second Level Floor Plan



\*Room sizes should be considered approximate since measurements are subject to certification.

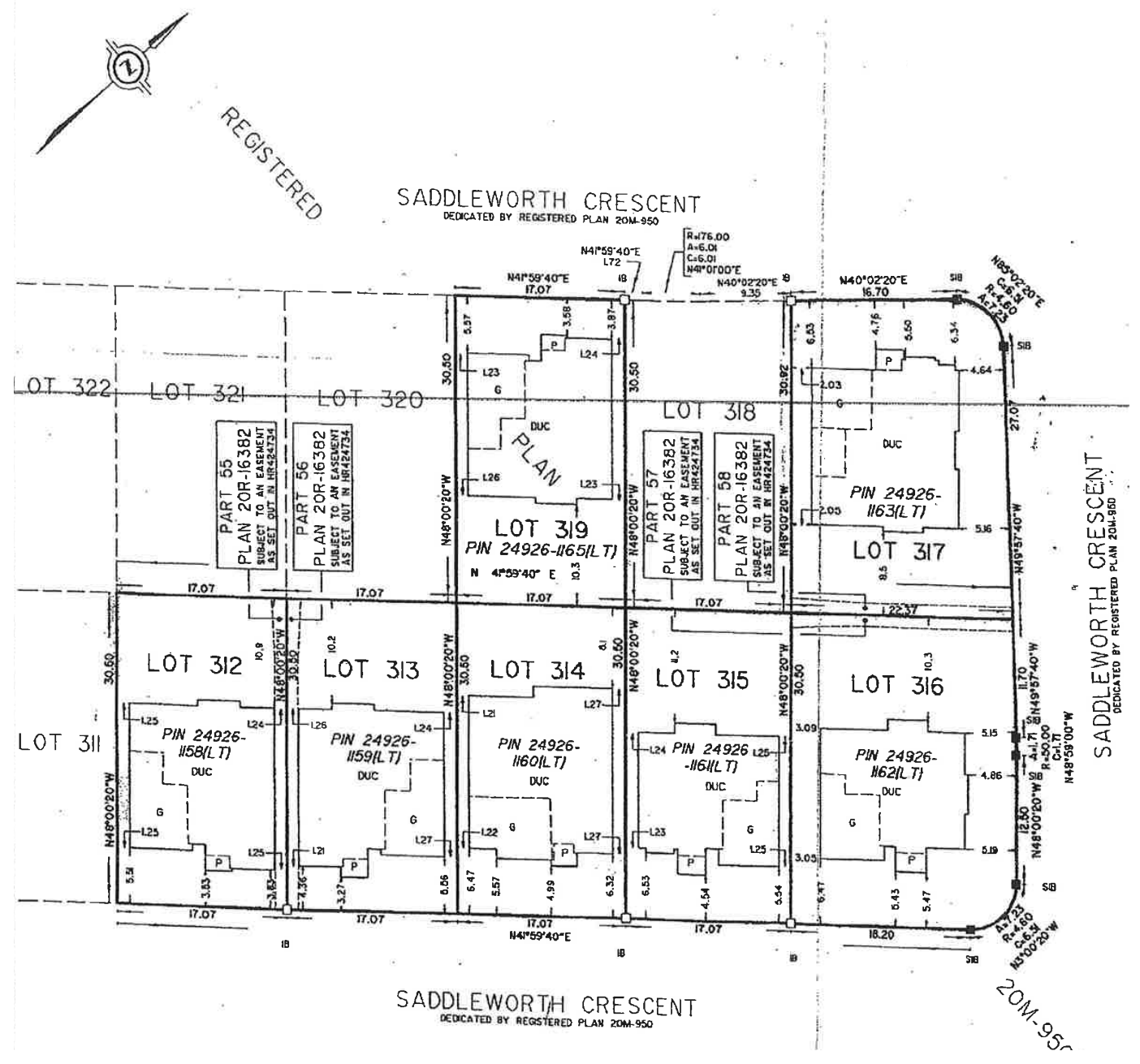
# Lower Level Floor Plan



Lower Level  
1566 Square Feet

\*Room sizes should be considered approximate since measurements are subject to certification.

# Survey



# Luxury Features

## NOTABLE

- Pristine lot
- Masterfully landscaped
- Mature mixed tree canopy
- Perennial framing gardens
- Stately stone hardscaping
- Luxurious updating throughout
- Vaulted ceilings throughout
- Refinished solid white oak floors + stairs
- Front & rear irrigation
- Salt-water pool + grand hot tub

## FOYER

- Stately entry door flanked by linear sidelite + linear transom
- Two-storey ceiling height with captain's window
- Heated marbled porcelain tile flooring
- Expanded traditional baseboards
- Designer chandelier

## DEN/OFFICE

- White oak hardwood flooring
- Expanded traditional baseboards
- Expansive glazing with arched transom
- Coat closet with shelves + hanging storage
- Crown moulding
- Pot lighting

## POWDER ROOM

- Heated marbled porcelain tile flooring
- Expanded traditional baseboards
- Warm wood vanity with quartz top, undermount sink + chrome faucet

- Linear framed mirror
- Central chandelier
- Toto lavatory

## DINING ROOM

- Stately milled columns
- White oak hardwood flooring
- Expanded traditional baseboards
- Expansive glazing with transom
- Central chandelier
- Tray ceiling with two-step crown moulding
- Pot lighting
- Built-in audio

## KITCHEN

- White oak hardwood flooring
- Expanded traditional baseboards
- Abundance of warm white traditional cabinetry
- Deep drawers + closed storage
- Granite counters with marbled tile back splash
- Utility wall with full-height pantry with organizational storage
- Peninsula-style counter with seating + wine storage
- Perimeter counter with double stainless sink with brushed chrome faucet
- Commercial grade appliances:
- Wolfe 5-burner gas cooktop
- Stainless vent hood
- Stainless Kitchenaid dishwasher
- Stainless Kitchenaid fridge/freezer
- Built-in Stainless Panasonic microwave
- Built-in stainless Kitchenaid oven
- Pot lighting

## BREAKFAST AREA

- Breakfast area with ample space for informal dining
- Vaulted ceiling above exterior doors
- Full-glass French doors with arched transom that open to rear stone patio
- Central chandelier
- Pot lighting
- Open to great room + kitchen

## GREAT ROOM

- Milled column entrance
- White oak hardwood flooring
- Expanded traditional baseboards
- Full-wall glazing with linear uppers
- Feature wall with oversized gas fireplace with full-height custom cast surround
- Dedicated media wall
- Pot lighting

## MUDROOM/LAUNDRY

- Interior garage access
- Marbled porcelain tile flooring
- Expanded traditional baseboards
- Built-in bench seating with hanging hooks + lower shelves
- Laundry wall with full built-in storage system with closed cabinetry with organizational built-ins
- Whirlpool front-loading washer + dryer pair
- Quartz folding counter with decorative tile backsplash + hanging rod
- Pot lighting

## GARAGE

- Full-height double garage
- Interior access
- Garage living interior with epoxy floor + open storage
- Automatic opener on doors
- Central vac

## UPPER LEVEL

- White oak stairs with white risers + black spindles
- White oak hardwood flooring throughout
- Expanded traditional baseboards
- Open to below
- Drop chandelier

## PRIMARY BEDROOM

- Double door entrance
- White oak hardwood flooring
- Expanded traditional baseboards
- Expansive glazing
- Corner gas fireplace with milled surround
- Flushmount lighting

## TWO DRESSING ROOMS

- White oak hardwood flooring
- Built-in closet system with open + closed storage; drawers + hanging storage
- Flushmount lighting

## PRIMARY ENSUITE

- Porcelain tile flooring
- Expanded traditional baseboards
- Linen closet with shelving
- Double glazing

- Expansive double wood vanity with closed storage + chrome hardware
- Marble counter + chrome 3-piece faucets
- Frameless wall-mounted mirrors
- Three chrome sconces
- Expansive glass enclosed shower with hexagon micro tile floor + square tile walls
- Chrome fixtures
- Deep soaker tub with tiled surround + mounted chrome fixtures
- Central mini chandelier
- Toto lavatory
- Pot lighting

## BEDROOM 2

- Plush neutral broadloom
- Expanded traditional baseboards
- Double glazing
- Built-in workstation with closed upper cabinetry + open shelving + closed lower with wood desk
- Closet with shelf + hanging storage
- Flushmount lighting

## ENSUITE 2

- Vaulted ceiling
- Ceramic tile flooring
- Expanded traditional baseboards
- Double glazing
- Wood vanity with oval sink + chrome faucet
- Wood framed mirror with sconce
- Soaker tub with porcelain tile surround + chrome fixtures
- American Standard lavatory

## BEDROOM 3

- Vaulted ceiling
- Plush neutral broadloom
- Expanded traditional baseboards
- Expansive glazing with arched transom
- Walk-in closet with shelf + hanging storage

## SEMI-ENSUITE BATH

- Heated porcelain tile flooring
- Expanded traditional baseboards
- Double vanity with closed storage, marble counter, undermount sinks + chrome faucets
- Chrome framed mirrors + sconce
- Glass enclosed shower with marble floor + linear textured subway tile surround, niche + chrome fixtures
- Casement window
- Kohler lavatory

## BEDROOM 4

- Plush neutral broadloom
- Expanded traditional baseboards
- Double glazing
- Double closet with shelf + hanging storage
- Flushmount lighting

## LOWER LEVEL

- White oak stairs with white risers + black spindles
- Plush broadloom
- Expanded traditional baseboards
- Pot lighting
- Expanded landing with custom built-in storage unit

# Luxury Features

## RECREATION ROOM

- Plush neutral broadloom
- Expanded traditional baseboards
- Ample space for family gatherings
- Pot lighting

## CRAFT AREA/ FLEX SPACE

- Plush neutral broadloom
- Expanded baseboards
- Flexible space
- Oversized gas fireplace with milled surround
- Two windows
- Open to rec space

## GYM AREA

- Plush neutral broadloom
- Expanded traditional baseboards
- Flushmount lighting + pot lighting

## BEDROOM 5

- Plush broadloom
- Expanded traditional baseboards
- Double windows
- Pot lighting

## BATHROOM

- Textured tile flooring
- Expanded traditional baseboards
- Warm wood vanity with closed storage, quartz top + single chrome fixture
- Framed mirror + sconce
- Glass shower with micro-tile floor + tile surround
- Toto lavatory
- Expanded window
- Pot lighting

## STORAGE

- Wood-effect porcelain tile flooring
- Walk-in closet with full built-in storage system
- Pot lighting

## MECHANICAL

- Extra storage area
- Closed cantina
- HE Carrier furnace with AprilAire humidifier
- John Wood Commercial hot water heater (owned)

## - EXTERIOR -

## REAR

- Fully fenced
- Framing perennial gardens
- Framing mixed topiary
- Expansive stone patio for alfresco dining
- Pool house with concealed equipment
- Inground saltwater pool framed with flat stone
- Pool-side stone lounge, perfect for lounging
- Hot tub
- Flat grassy area
- Gas BBQ line
- Landscape lighting
- Irrigation system

## FRONT

- Pristine landscaping
- Mature tree canopy
- Framing perennial gardens
- Stone framed driveway

- Stone walk-way leads to portico
- Landscape lighting
- Irrigation system

\*Notwithstanding any items identified as features or inclusions or exclusions in this brochure, only those items identified as inclusions in the Agreement of Purchase and Sale will be deemed an inclusion.



## About The Neighbourhood

Bronte Creek is a scenic community defined by its proximity to Bronte Creek Provincial Park. Newer homes, abundant green space and excellent access to highways make it a popular choice for those seeking both modern living and nature at their doorstep.

Life here offers the best of both worlds. Mornings might begin with a hike through Bronte Creek Provincial Park, while evenings bring neighbours together in quiet, tree-lined streets. The park itself is the community's gem, with year-round trails, wildlife and open fields that create a unique lifestyle experience.



**GoodaleMillerTeam**  
CENTURY 21 MILLER REAL ESTATE LTD. BROKERAGE

905.338.2121 | [GoodaleMillerTeam.com](http://GoodaleMillerTeam.com)