



GMT

5316 Drenkelly Court  
Mississauga

## Welcome to 5316 Drenkelly Court

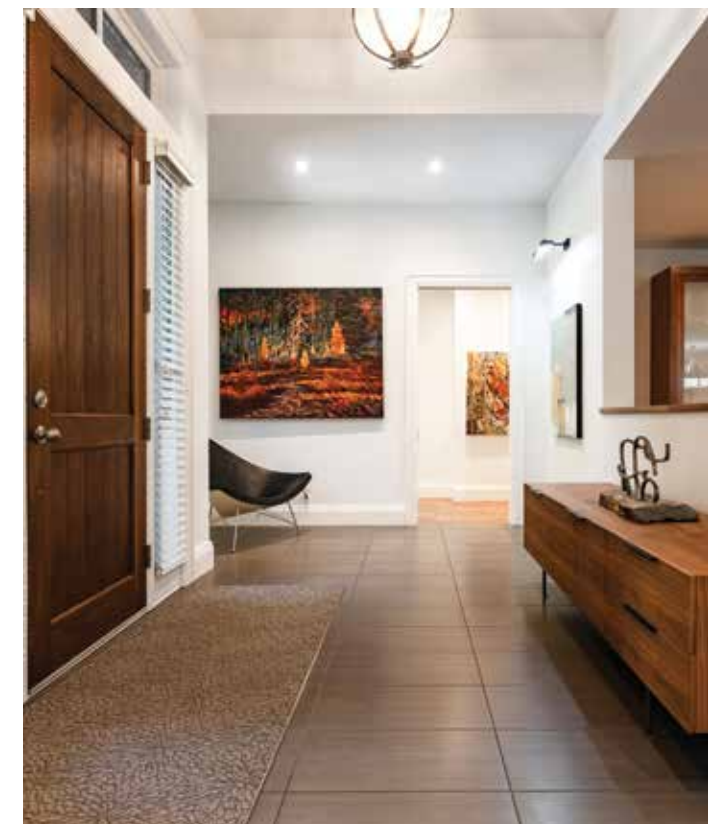
Set discreetly along the banks of the Credit River and enveloped by a mature canopy of towering trees, this extraordinary residence feels like an architectural retreat. A timeless design, the home embraces a refined mid-century modern aesthetic, where strong horizontal lines, expansive overhangs, natural materials + a seamless connection to the landscape create a sense of quiet permanence, almost as if it's always been there. Approached by a sweeping drive and concealed within lush greenery, the home reveals itself with understated boldness. The low-slung rooflines + richly textured masonry echo the surrounding environment, while the positioning of the home feels intentionally woven into the Credit River just beyond. Every vantage point is immersed in nature, with the dense tree canopy offering a remarkable sense of calm + seclusion, rarely found in an urban setting.



### Property Highlights

BEDS	4+2
BATHS	4.2
LOT SIZE	84.07' x 203.28' x 165.69' x 95.57'
ABOVE GRADE	3,852 sq ft
TOTAL SQ FT	7,590 sq ft
TAXES	16,949.50 / 2026

\*Measurements are approximate



### THE GOODALE MILLER TEAM

Listing Agents: Brad Miller, Kieran McCourt & Murray McKeage

SCAN TO VIEW THE  
DIGITAL BROCHURE

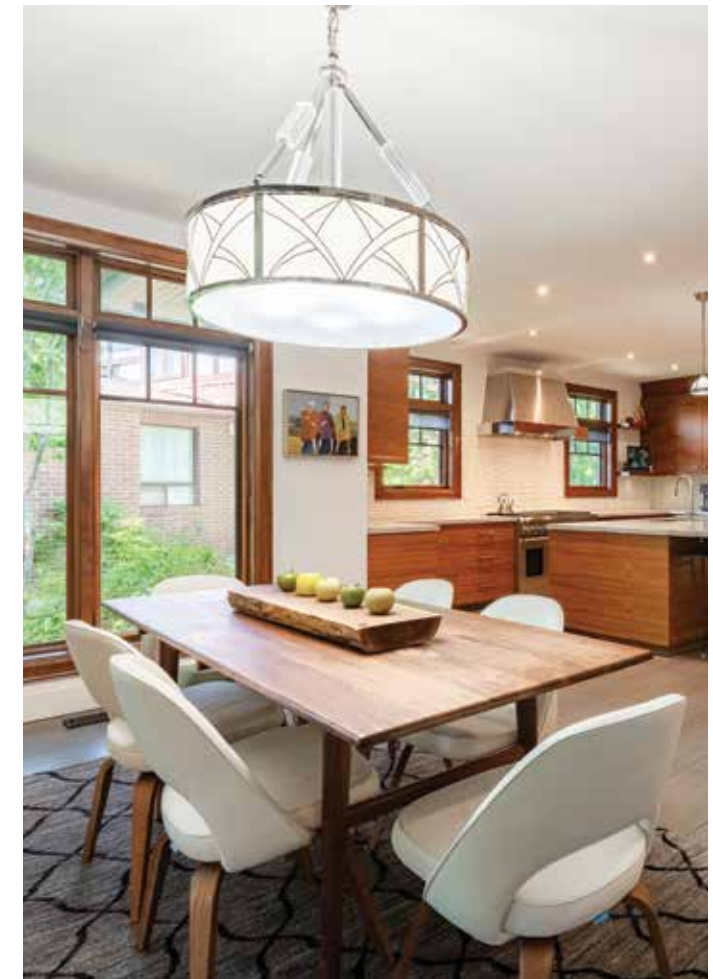






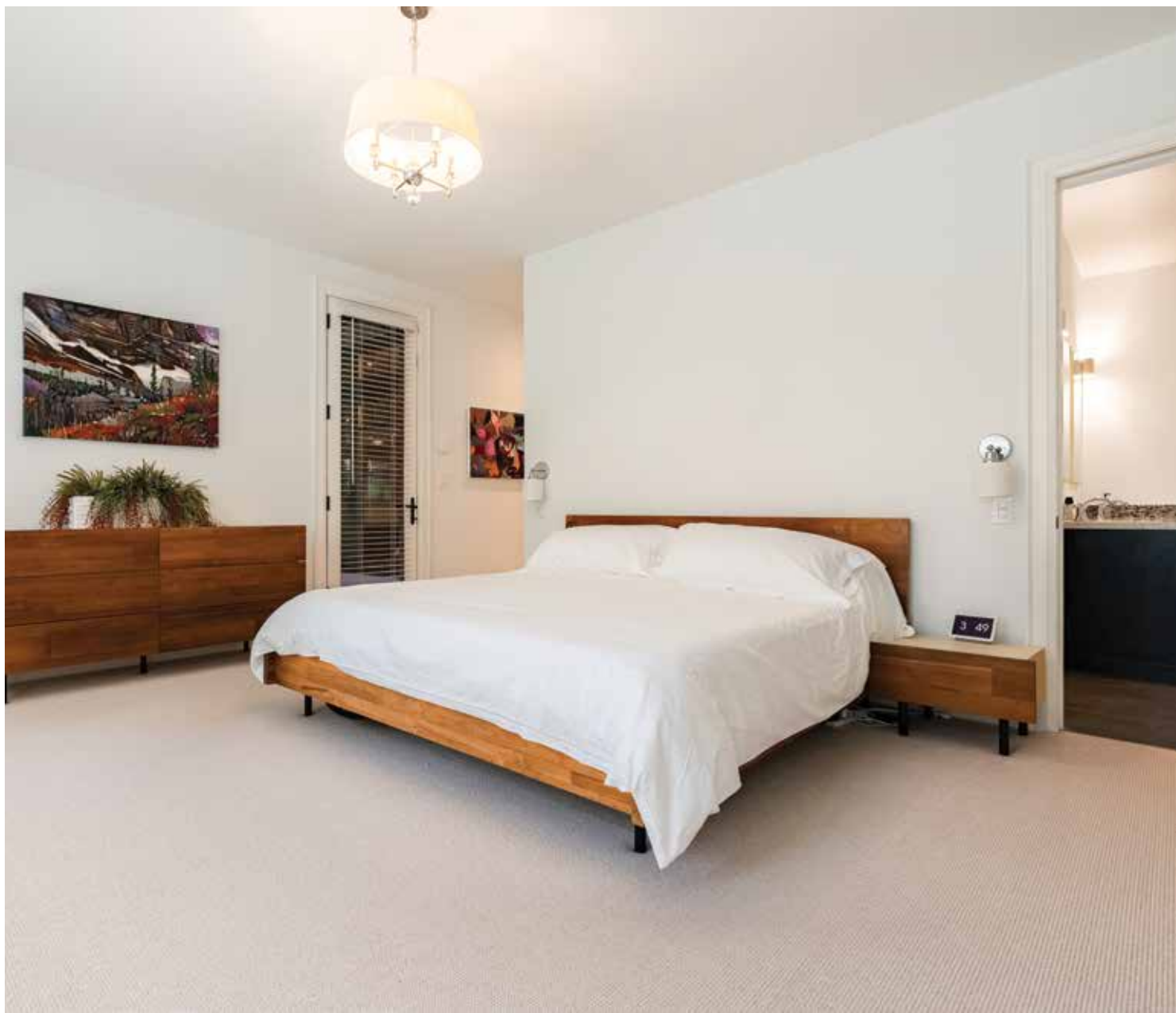
## Main Level

The main level unfolds with remarkable scale + fluidity, where expansive walnut glazing frames uninterrupted views of the surrounding landscape. A generous use of walnut + Italian stone connects each space + creates a deeply organic palette throughout. A sculptural stone-wrapped fireplace anchors the great room + bespoke walnut cabinetry + commercial grade appliances create a dreamy chef's kitchen. Dual solariums, ideal for dining + lounging, emphasize the connection to the outdoors. The utility wing offers seamless practicality with laundry, powder, garage + exterior access & stairs to the upper bedroom suite. Tucked away, the sleeping wing is tranquil. With wall-to-wall glazing, the primary is bright + airy with an outfitted dressing + serene ensuite. Two additional spacious bedrooms + main bath complete this wing.







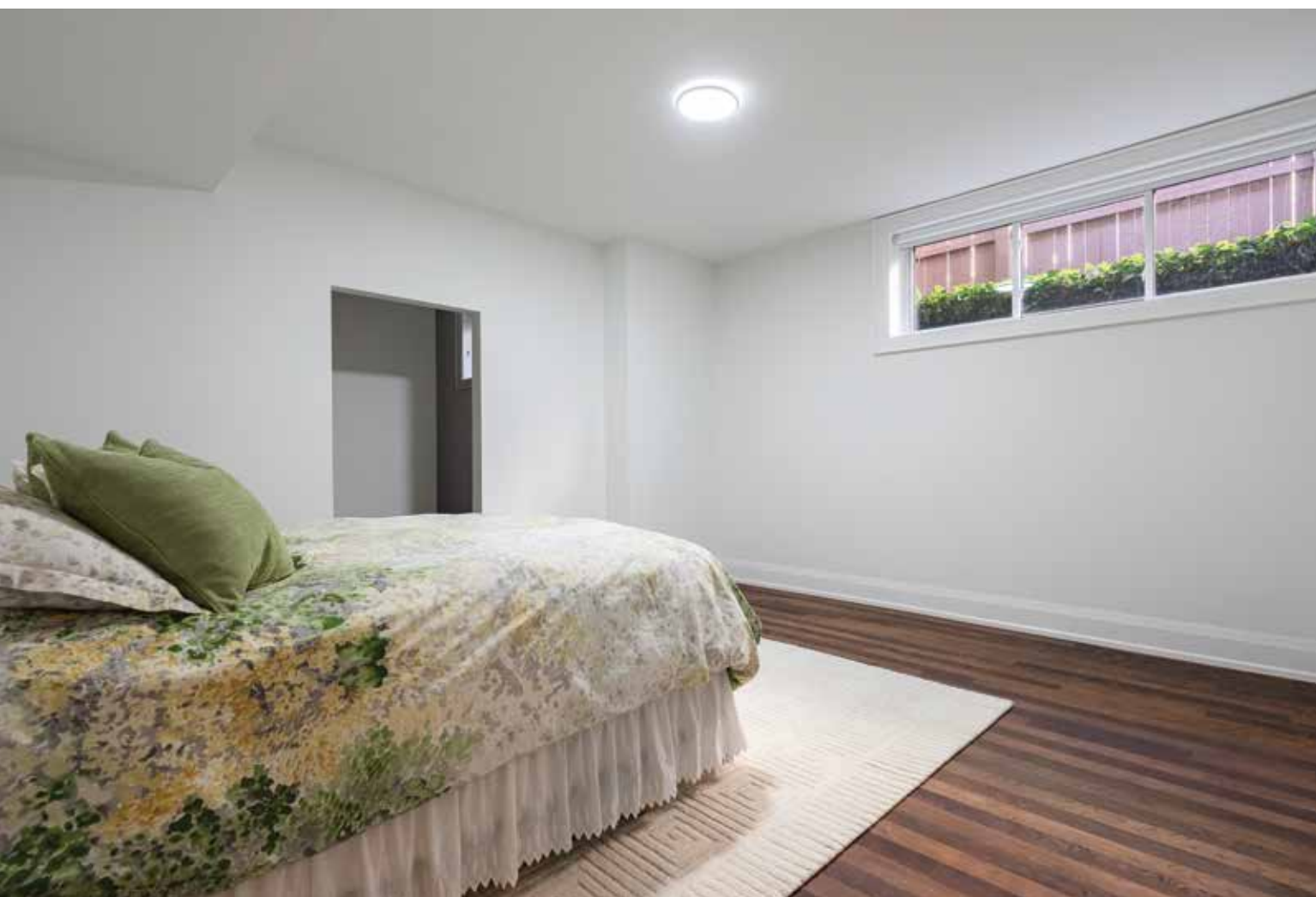




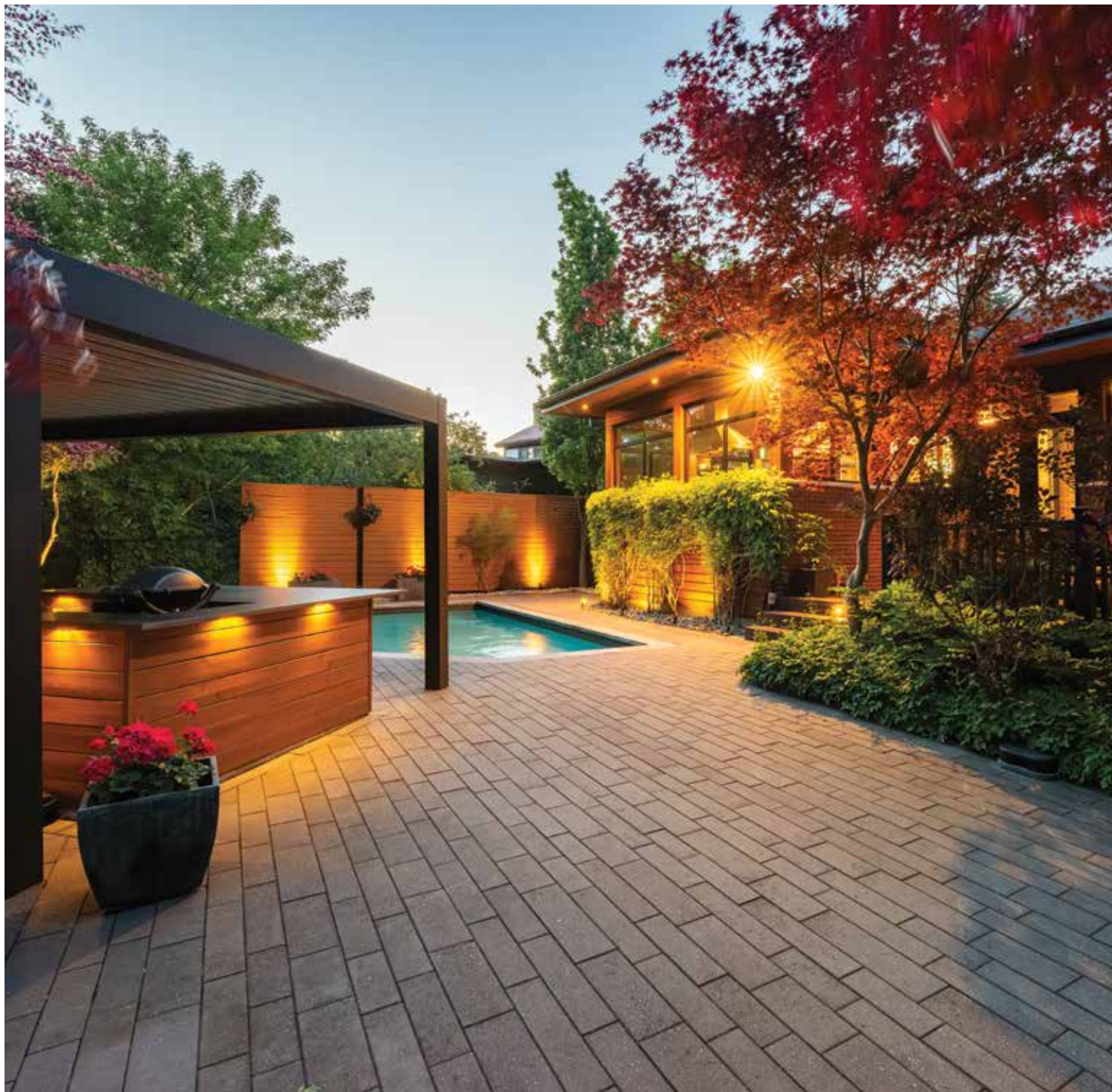


## Lower Level

Strategically designed, the lower level is an extension of the timeless principles of mid-century modern living with elevated ceilings, ample light + connected spaces. Recently finished with careful consideration of multi-generational living, this level is expansive. With connected living spaces with dedicated powder room + storage & separate sleeping wing with two sizable bedrooms + shared bath. A generous level, perfectly positioned to welcome extended family.



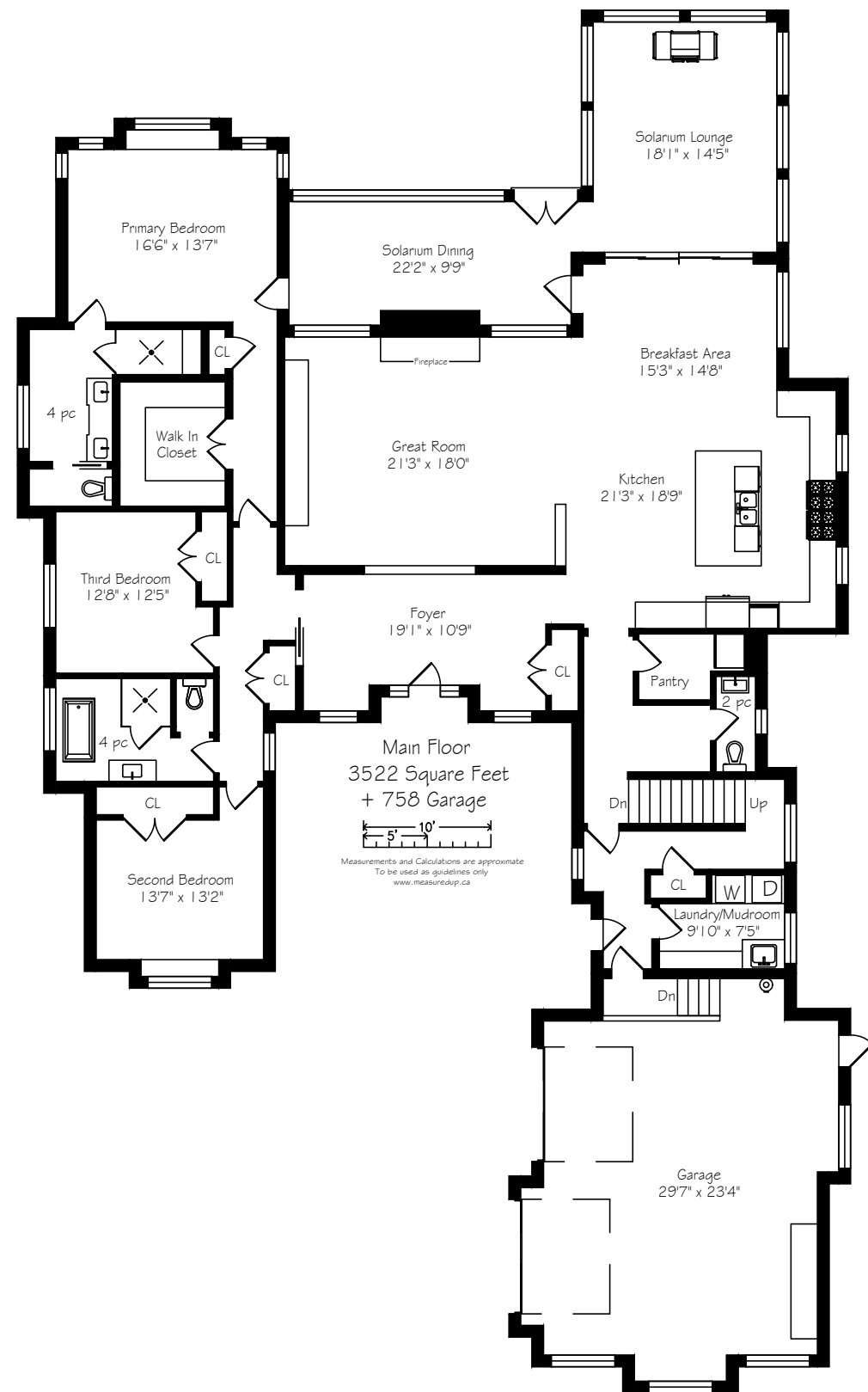




## Backyard

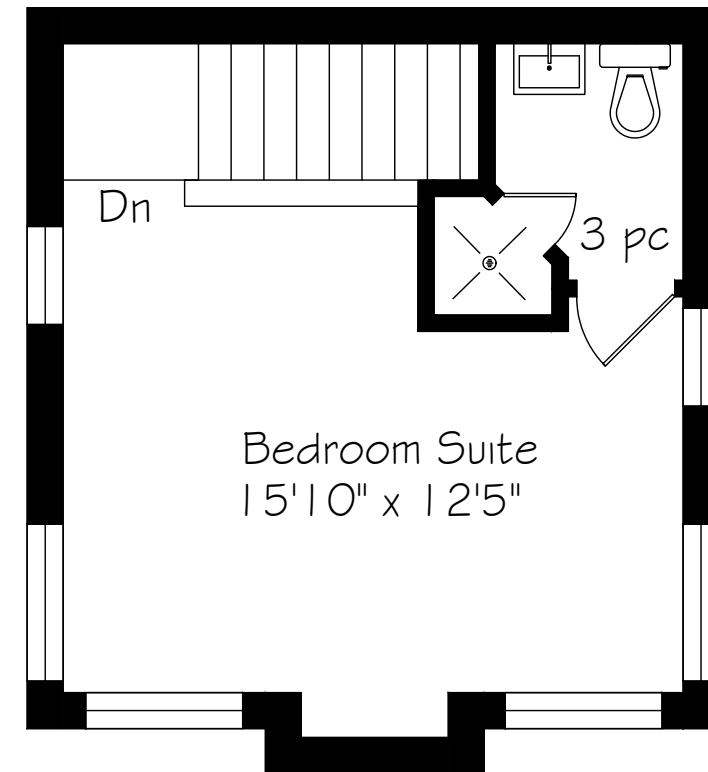
Layered into the natural ravine landscape, the rear grounds unfold as a private resort suspended within the trees. Expansive stone terraces + tiered deck areas frame the pool + intentionally designed perennial gardens embrace the surrounding natural environment. The setting is remarkably secluded + poised to welcome guests + family alike. Timeless in design + deeply connected to its setting, this is a home of rare architectural integrity: sophisticated, soulful + entirely unforgettable.

# Main Level Floor Plan



\*Room sizes should be considered approximate since measurements are subject to certification.

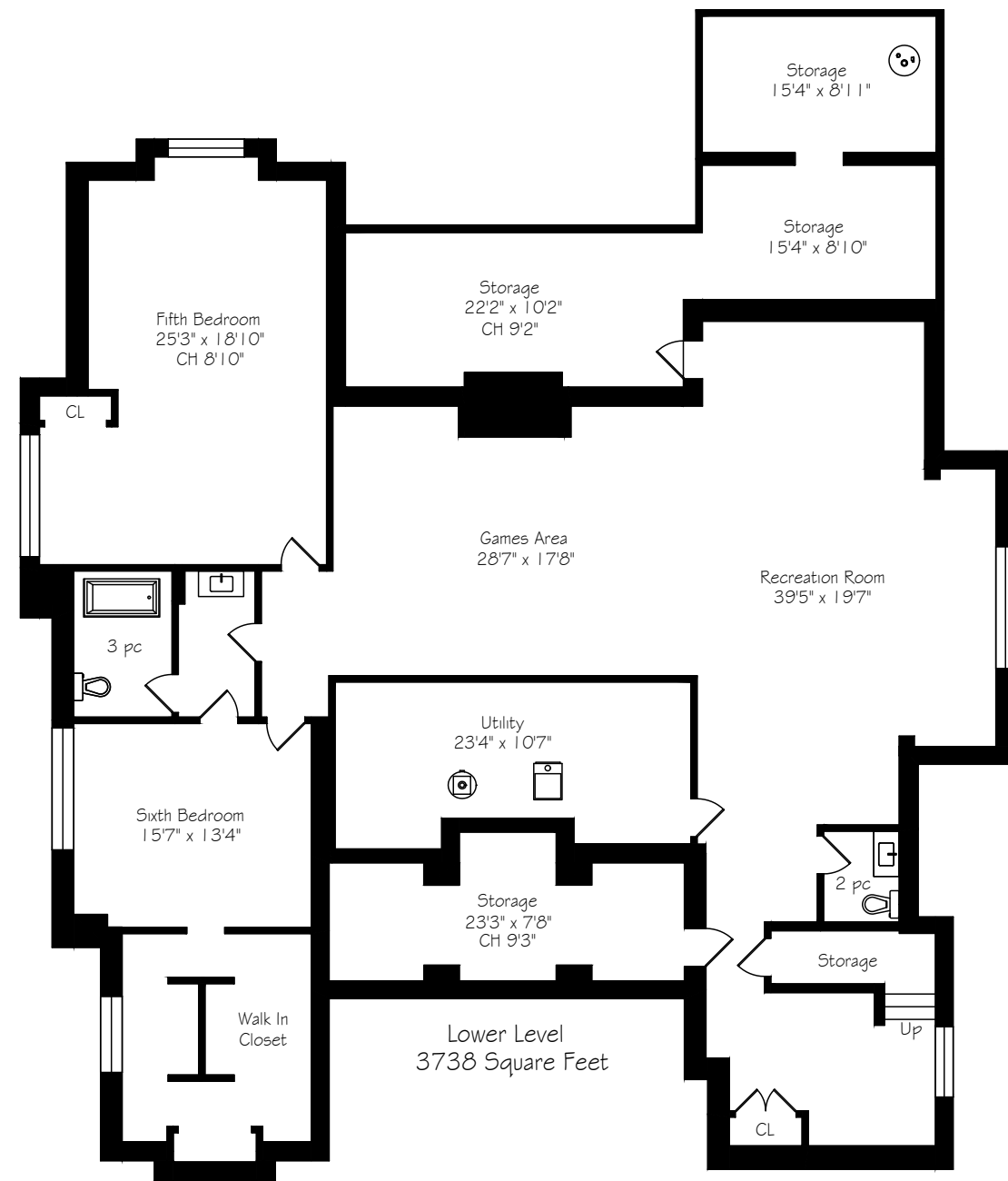
# Second Level Floor Plan



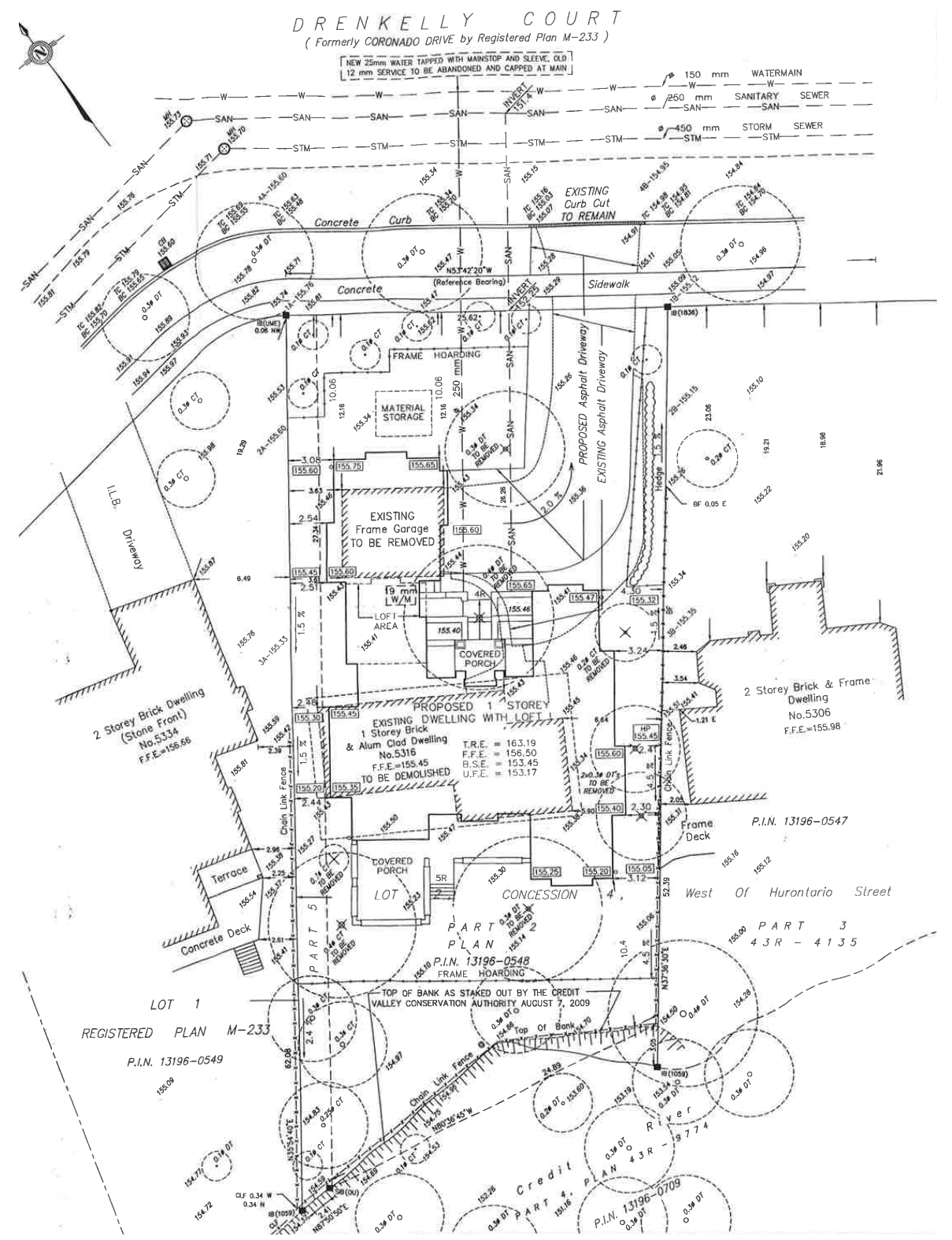
Second Floor  
330 Square Feet

\*Room sizes should be considered approximate since measurements are subject to certification.

# Lower Level Floor Plan



# Survey



\*Room sizes should be considered approximate since measurements are subject to certification.

# Luxury Features

## NOTABLE

- Expansive, pristine lot on the Credit River
- Masterfully landscaped
- Mature mixed tree canopy
- Perennial framing gardens
- Cedar lined soffits with lighting
- Updated interior
- 2 solariums
- Front & rear irrigation
- Gunite pool + bar lounge

## - MAIN LEVEL -

### FOYER

- Stately wood entry door flanked by linear sidelites + transom + two linear windows
- 11' ceiling height
- Tonal Italian tile flooring
- Expanded baseboards
- Double coat closet with shelves + hanging storage
- Designer chandelier
- Feature lighting
- Pot lighting

### LIVING ROOM

- Open space
- Walnut hardwood flooring
- Expanded baseboards
- Dedicated media wall with custom walnut cabinetry
- Feature wall wrapped in natural stone with oversized gas fireplace + walnut mantel
- Abundance of walnut framed glazing

- Built-in audio
- Pot lighting
- Open to kitchen

### SOLARIUM DINING

- Composite wood flooring
- Natural brick + stone walls
- Wall-to-wall glazing
- Glass to screen transitions on select windows
- Full glass doors open to rear patio
- Cedar ceiling
- Feature lighting
- Pot lighting
- Built-in audio

### SOLARIUM LOUNGE

- Composite wood flooring
- Natural brick walls
- Wall-to-wall glazing
- Glass to screen transitions on select windows
- Full glass doors from breakfast
- Cooking area with gas line + commercial venting
- Cedar ceiling
- Feature lighting
- Pot lighting
- Built-in audio

### KITCHEN

- Heated tonal Italian tile flooring
- Expanded baseboards
- Abundance of full-height seamless walnut cabinetry brushed metal hardware
- Deep drawers + closed storage
- Utility wall with full-height pantry with organizational storage

- Double recycling sorting station
- Perimeter natural stone counter with textured tile back splash + upper walnut floating shelves
- Oversized central island with natural stone top, double stainless sink, storage + overhang for seating
- Central pendant lighting
- Commercial grade appliances:
- Thermador 6-burner + griddle gas range
- Custom stainless hood vent
- Panelled Kitchenaid dishwasher
- Built-in stainless Kitchenaid microwave + warming drawer
- Built-in Jenn-Air fridge/freezer
- Pot lighting
- Open to great room

### BREAKFAST/DINING

- Tonal Italian tile flooring
- Expanded baseboards
- Ample space for large gathering
- Full-glass French doors with side panels that open to solarium lounge
- Glass door opens to solarium dining
- Additional expansive glazing
- Central chandelier

### WALK-IN PANTRY

- Tonal Italian tile flooring
- Expanded baseboards
- Extra storage
- Whirlpool upright freezer
- Pot lighting

## POWDER ROOM

- Tonal Italian tile flooring
- Expanded baseboards
- Floating vanity with integrated sink + chrome Riobel faucet
- Frameless mirror with integrated shelf
- Linear sconce
- Casement window
- American Standard lavatory

## UTILITY WING

- Interior garage access in hallway
- Secondary front entrance, access to upper-level bedroom suite

## MUDROOM/LAUNDRY

- Tonal Italian tile flooring
- Expanded baseboards
- Built-in bench seating with hanging hooks, upper storage + lower drawers
- Utility sink with quartz counter + closed lower storage
- Whirlpool front-loading washer + dryer pair
- Quartz Folding counter + upper closed storage
- Double glazing
- Pot lighting

## GARAGE

- Full-height expanded depth double garage
- Interior access
- Epoxy flooring
- Worksop with bench + upper storage
- Exterior rear access

# Luxury Features

- Expansive glazing
- Automatic opener on doors
- Central vac

## SLEEPING WING

- Dedicated hallway
- Double linen closet with shelving system
- Casement glazing
- Pot lighting

## PRIMARY BEDROOM

- Plush Berber broadloom
- Expanded traditional baseboards
- Expansive glazing on all walls
- Full glass door opens to solarium
- Reading nook with custom storage bench
- Central chandelier
- Linen closet with open shelving
- Incredible view of lush credit river tree canopy

## DRESSING ROOM

- Plush Berber broadloom
- Built-in closet system with open + closed storage; drawers + hanging storage
- Pot lighting

## PRIMARY ENSUITE

- Heated dark marble tile flooring
- Expanded traditional baseboards
- Double glazing
- Expansive double wood vanity with closed storage + chrome 3-piece hardware
- Marble counter + river stone backsplash
- Framed wall-mounted mirror

- Two sconces
- Expansive glass enclosed shower with micro marble tile floor + linear stone tile walls + ceiling
- Chrome fixtures
- Shower niche + bench seating with quartz top
- Water closet with American Standard lavatory
- Pot lighting

## BEDROOM 2

- Plush Berber broadloom
- Expanded baseboards
- Expansive glazing with reading nook with custom storage bench
- Double closet with built-in storage system
- Flushmount lighting

## MAIN BATH

- Textured porcelain tile flooring
- Expanded traditional baseboards
- Floating white vanity with closed storage, one-piece counter with integrated sink + chrome Riobel faucet
- Wall-mounted mirror with integrated shelf + linear sconce
- Glass enclosed shower with micro-tile floor + linear tile surround
- Chrome Riobel fixtures
- Pot lighting
- Freestanding soaker tub with floor mounted chrome Riobel fixtures
- Expansive glazing
- Water closet with American Standard lavatory

# Luxury Features

---

## BEDROOM 3

- Plush Berber broadloom
- Expanded baseboards
- Expansive glazing
- Double closet with built-in storage system
- Flushmount lighting

## - UPPER-LEVEL SUITE -

- Separate entrance from front drive
- Dedicated hallway with coat closet
- Walnut stairs to upper level
- Upper Bedroom:
- Plush Berber broadloom
- Expanded baseboards
- Expansive glazing with additional curtain windows
- Large sleeping space

## ENSUITE

- Porcelain tile flooring
- Expanded baseboards
- White vanity with porcelain top with integrated sink
- Framed mirror + linear sconce
- Marble framed shower with micro marble tile flooring with porcelain surround + chrome fixtures
- American Standard lavatory

## - LOWER LEVEL -

- Professionally finished in 2025
- Expanded ceiling height
- Walnut stairs + risers
- Premium LVT vinyl flooring

- Expanded traditional baseboards
- Pot lighting
- Under-stair storage

## RECREATION ROOM

- Premium LVT vinyl flooring
- Expanded baseboards
- Ample space for family gatherings
- Linear egress window
- Flushmount lighting

## POWDER ROOM

- Linear porcelain tile flooring
- Expanded traditional baseboards
- Floating white vanity with closed storage, seamless top with integrated sink + chrome Riobel faucet
- Frameless mirror + linear sconce
- American Standard lavatory

## FLEX SPACE/GYM AREA

- Open space
- Premium LVT vinyl flooring
- Expanded baseboards
- Ample space for family gatherings
- Flushmount lighting
- Pot lighting

## BEDROOM 5

- Premium LVT vinyl flooring
- Expanded baseboards
- Open double closet
- Two linear egress windows
- Double egress window
- Pot lighting

## BEDROOM 6

- Premium LVT vinyl flooring
- Expanded baseboards
- Linear egress window
- Flushmount lighting

## DRESSING ROOM

- Premium LVT vinyl flooring
- U-shaped walk-in closet
- Egress window

## SEMI-ENSUITE BATHROOM

- Textured tile flooring
- Expanded traditional baseboards
- Floating white vanity with closed storage, seamless top with integrated sink + chrome Riobel faucet
- Frameless mirror + linear sconce
- Separate water closet with freestanding soaker tub with wall-mounted chrome Riobel fixtures
- American Standard lavatory
- Pot lighting

## STORAGE

- Two expansive separate storage areas
- One with sump pump with battery back-up

## - MECHANICAL -

- Extra storage area
- Two HE KeepRite furnaces with Honeywell humidifiers
- Commercial grade John Wood Proline XL hot water heater

# Luxury Features

---

## - EXTERIOR -

### REAR

- Fully fenced
- Framing perennial gardens
- Framing cedars
- Layered dining + lounging areas
- Expansive deck with Trex planks + rails
- Linear stone pathways
- Mixed topiary
- Perennial ground cover strategically placed
- Expansive stone lounge with louvered pergola
- Poolside bar area with honed stoned top + seating
- Cedar privacy walls
- Gib-San gunite pool w/safety winter cover + summer cover
- Irrigation system
- Backing onto the Credit River

### FRONT

- Perimeter fencing
- Pristine landscaping
- Mature tree canopy
- Framing perennial gardens with stone boulders + mixed evergreens
- Layered stone walk-way leads to stone portico
- Irrigation system
- Landscape lighting
- Expansive driveway
- Wood bunkie for lawn equipment

\*Notwithstanding any items identified as features or inclusions or exclusions in this brochure, only those items identified as inclusions in the Agreement of Purchase and sale will be deemed an inclusion.



**GoodaleMillerTeam**  
CENTURY 21 MILLER REAL ESTATE LTD. BROKERAGE

905.338.2121 | [GoodaleMillerTeam.com](http://GoodaleMillerTeam.com)