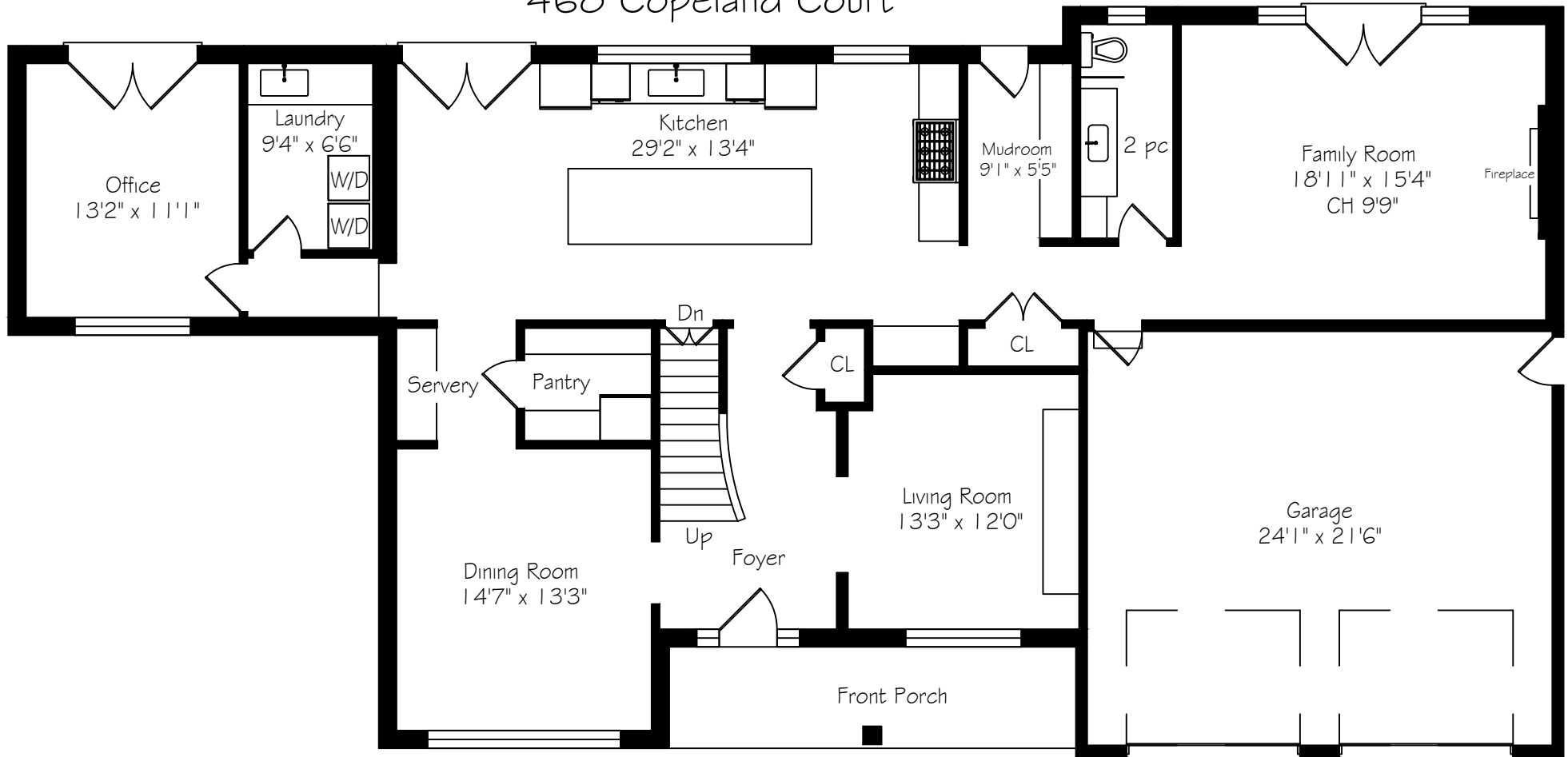
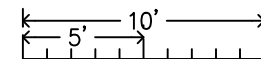


# 468 Copeland Court

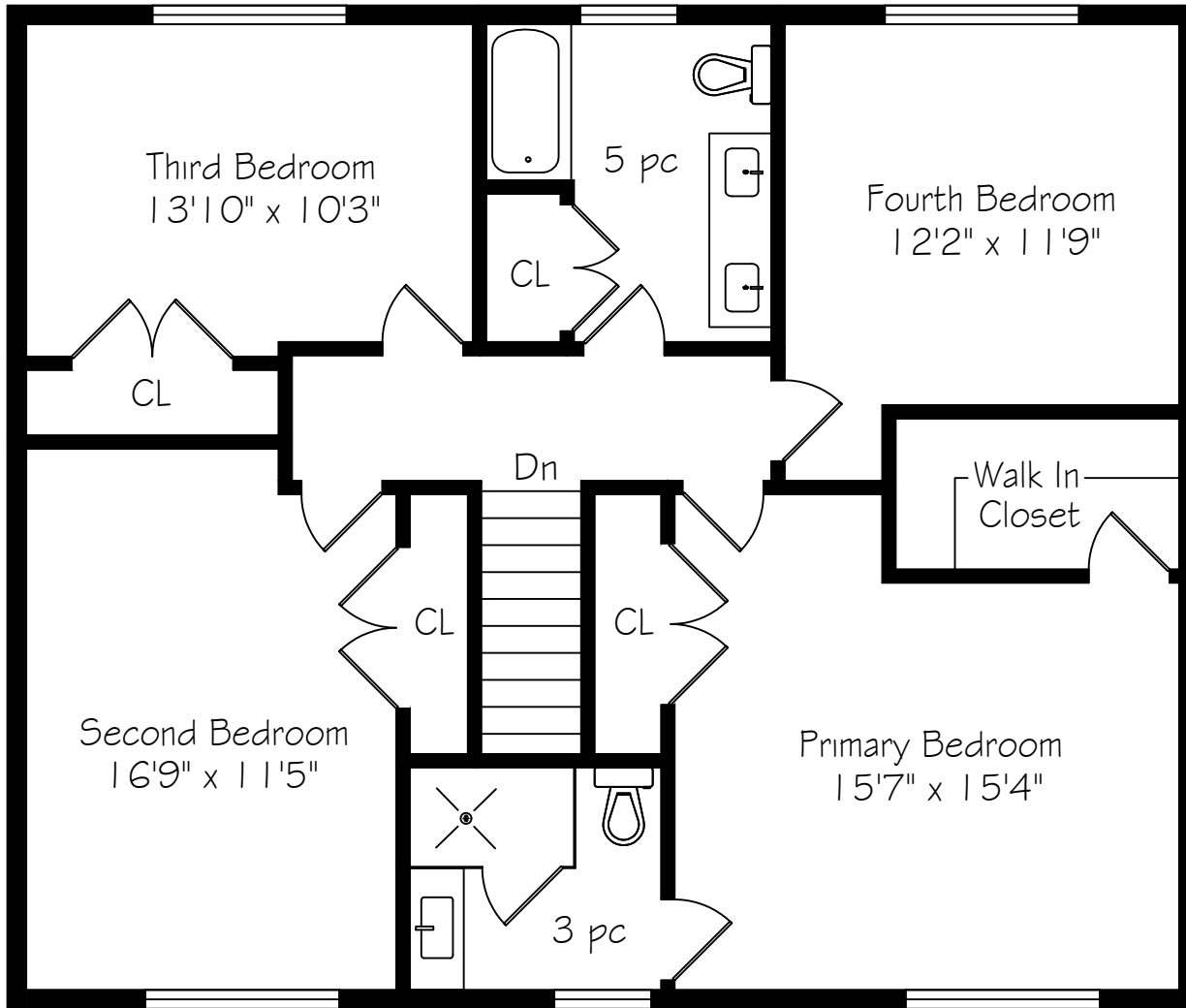


Main Floor  
1930 Square Feet  
+ 548 Garage

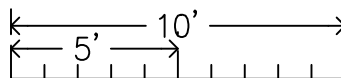


Measurements and Calculations are approximate  
To be used as guidelines only  
[www.measuredup.ca](http://www.measuredup.ca)

# 468 Copeland Court

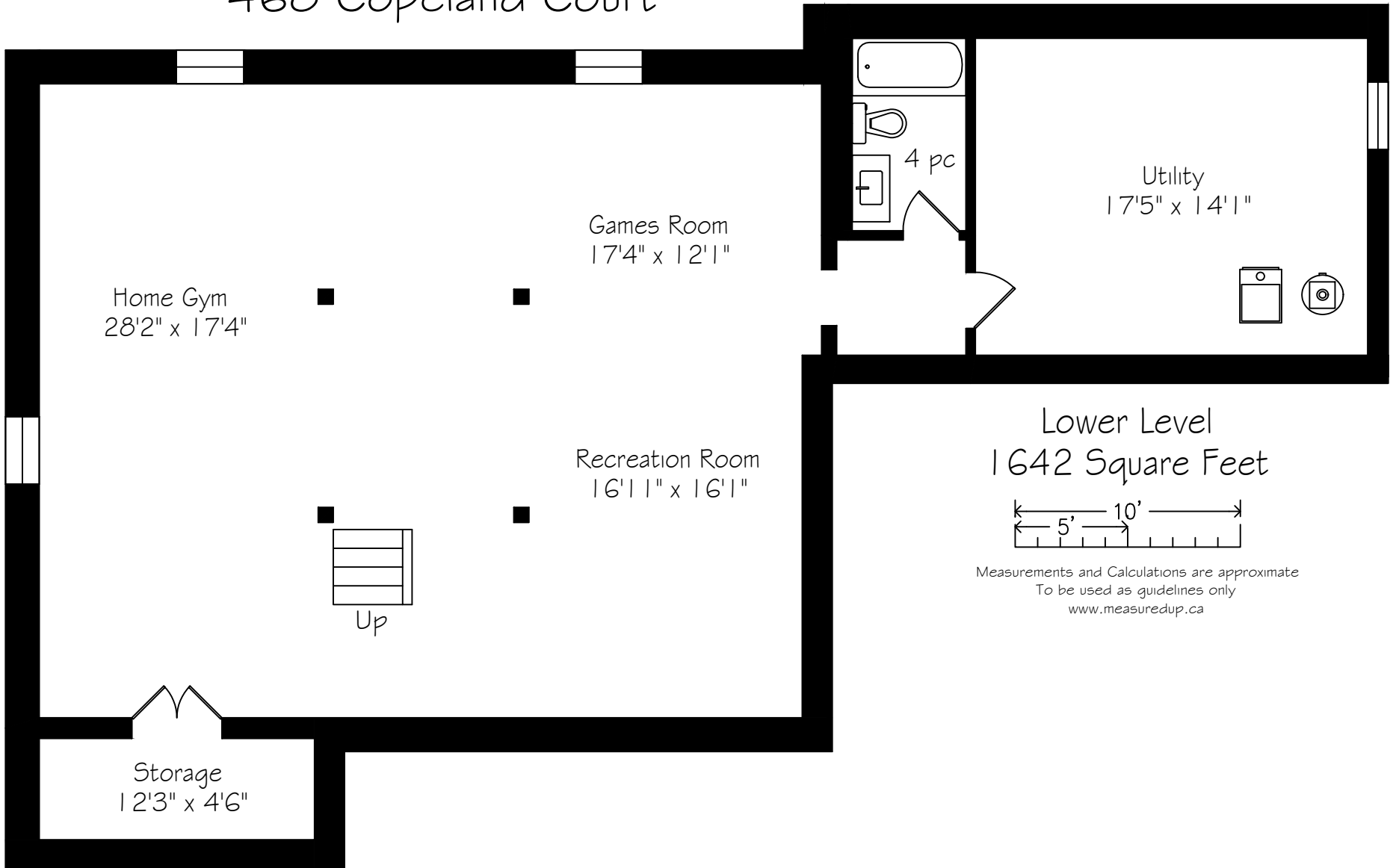


Second Floor  
1140 Square Feet

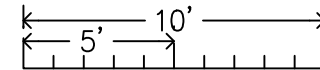


Measurements and Calculations are approximate  
To be used as guidelines only  
[www.measuredup.ca](http://www.measuredup.ca)

# 468 Copeland Court



Lower Level  
1642 Square Feet



Measurements and Calculations are approximate  
To be used as guidelines only  
[www.measuredup.ca](http://www.measuredup.ca)