

A two-story house with a prominent front porch supported by white columns. The house has light-colored siding and a dark roof. A large tree with red leaves is on the left, and a stone pillar is on the right. The address "376 Wedgewood Drive" is visible above the porch.

GMT

376 Wedgewood Drive

Oakville

Welcome to 376 Wedgewood Drive

Set on a pristinely landscaped lot in coveted Morrison, this refined family residence blends timeless architecture with everyday livability. Traditional detailing, steep gables + crisp architectural lines lend a classic presence, while the thoughtfully designed layout offers generous proportions + an effortless flow for family living. Mature trees, curated gardens + layered natural stone create a welcoming approach + set the tone for the resort-inspired yard with glistening pool, stone lounges + zen garden. This is a refined home with a polished exterior in one of Oakville's most established neighbourhoods + in one of Ontario's top rated school districts.



Property Highlights

BEDS	4+1
BATHS	4.1
LOT SIZE	76.12' x 148.32' x 76.12' x 148.40'
ABOVE GRADE	4,081 sq ft
TOTAL SQ FT	5,574 sq ft
TAXES	\$17,902 / 2026



THE GOODALE MILLER TEAM

Listing Agents: Brad Miller, Kieran McCourt & Murray McKeage

SCAN TO VIEW THE
DIGITAL BROCHURE





Main Level

Expansive glazing + elevated ceilings define bright, airy principal spaces. The central floor plan is grand + each living space connects effortlessly to the next. The dining room is a central point, creating flow from the great room + kitchen - making everyday living + entertaining seamless. The great room is anchored by a central fireplace + adjacent double French doors that open to a private lounge with concrete gas fire bowl, a perfect spot for an evening aperitif. The kitchen is expansive + well equipped with an oversized central island - an ideal place for informal gatherings. The private home office is tucked away with lush front garden views. The mudroom's corridor opens to the rear grounds, where you'll find your very own retreat.









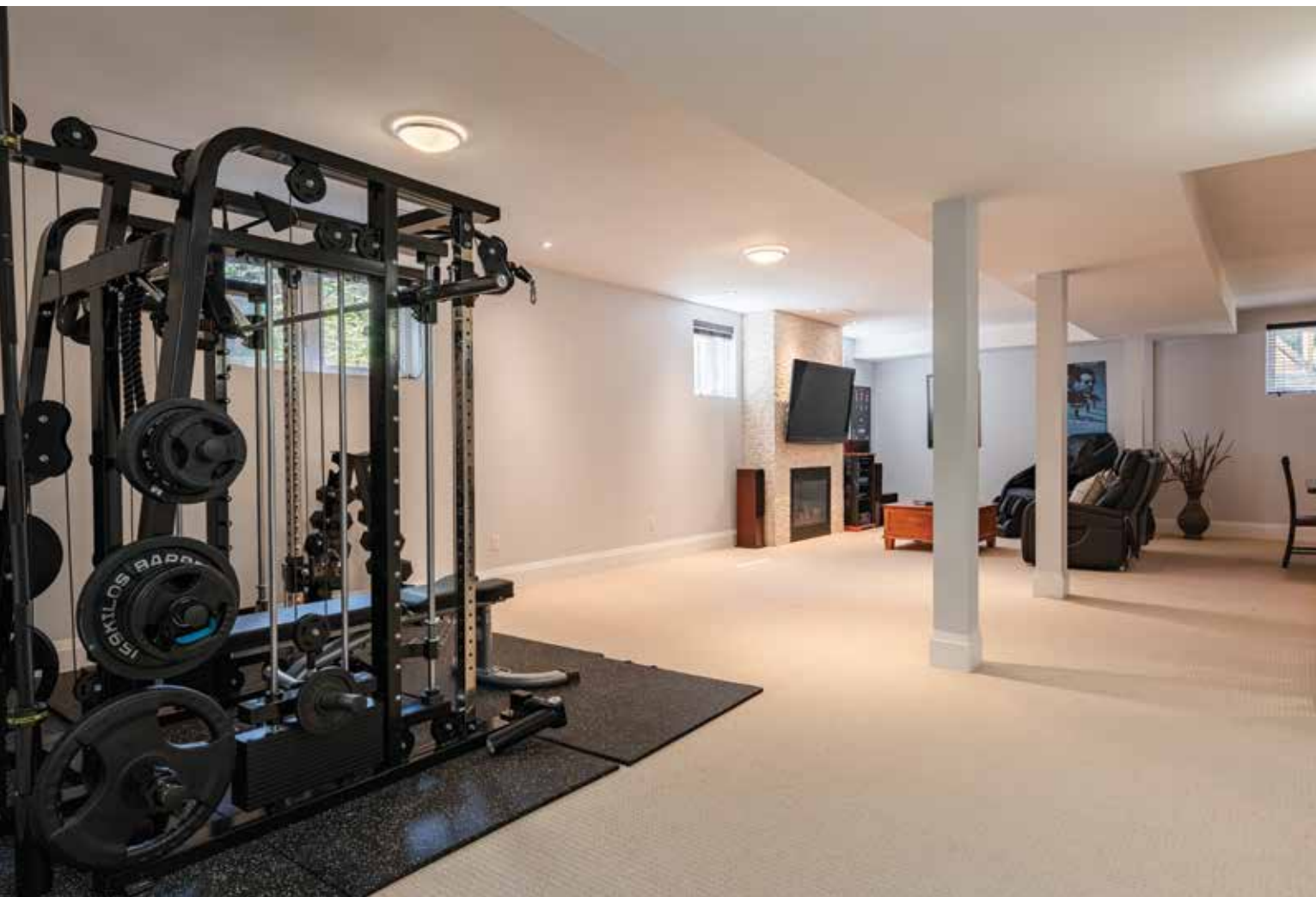


Second Level

Elevated ceilings + architectural angles create a sense of grandeur. Tucked in its own wing, the primary impresses with vaulted ceilings, expansive glazing + marble framed fireplace. The dressing room is fully outfitted + the ensuite is reminiscent of a boutique hotel. An additional three generously sized bedrooms feature elevated ceilings, expansive glazing + walk-in closets. One offers an ensuite + two share a well-appointed, marble-soaked bath. A dedicated laundry with ample storage, keeps you organized.

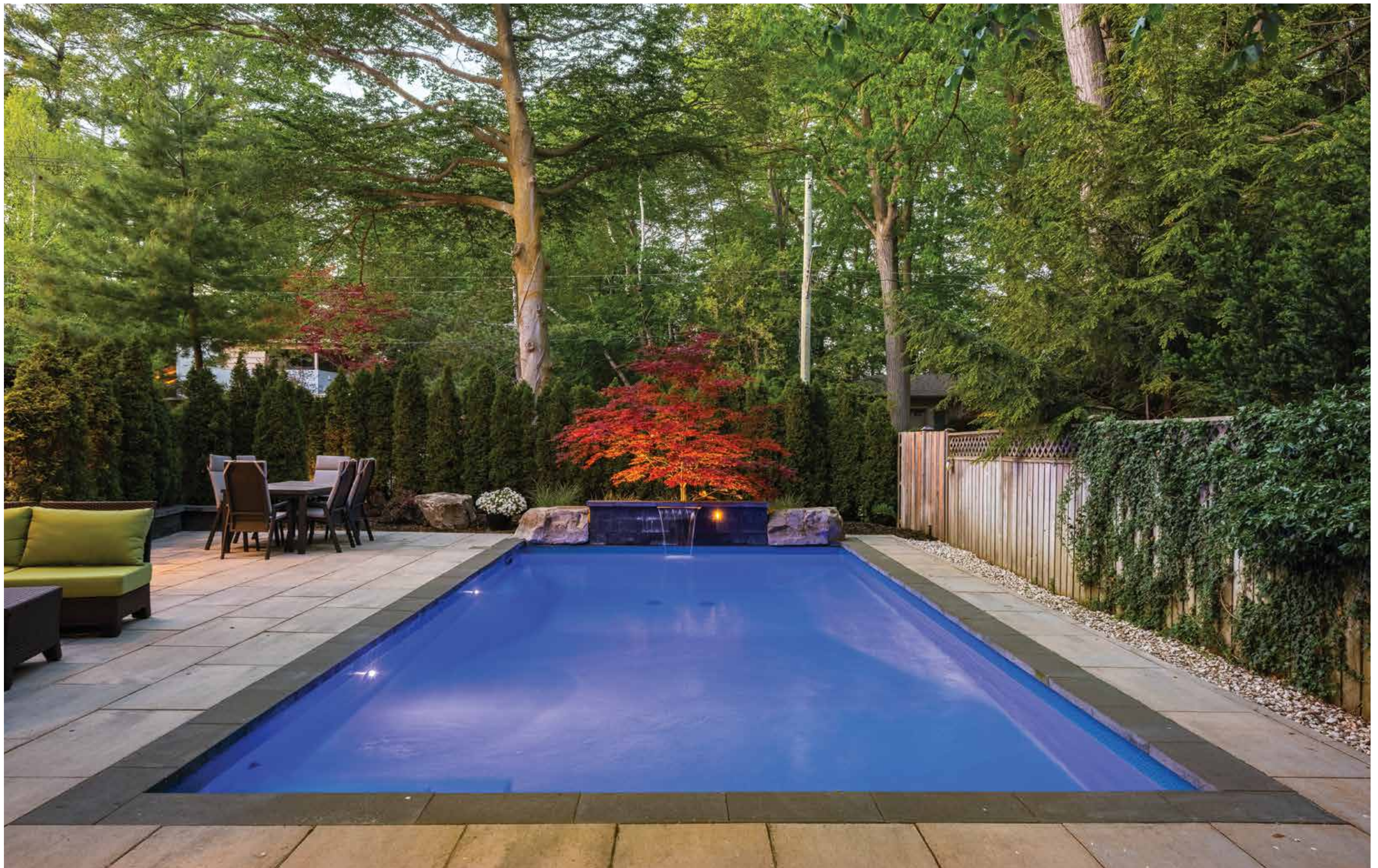






Lower Level

Strategically designed, the lower level is an extension of the polished living spaces on the upper levels. A generous level with ample windows + plush broadloom keeping it cozy. The rec room is an ideal family gathering space + open to the wet bar + games space, an ideal place for family hangouts. An additional bedroom, walk-in closet + full bath can accommodate guests + family alike.

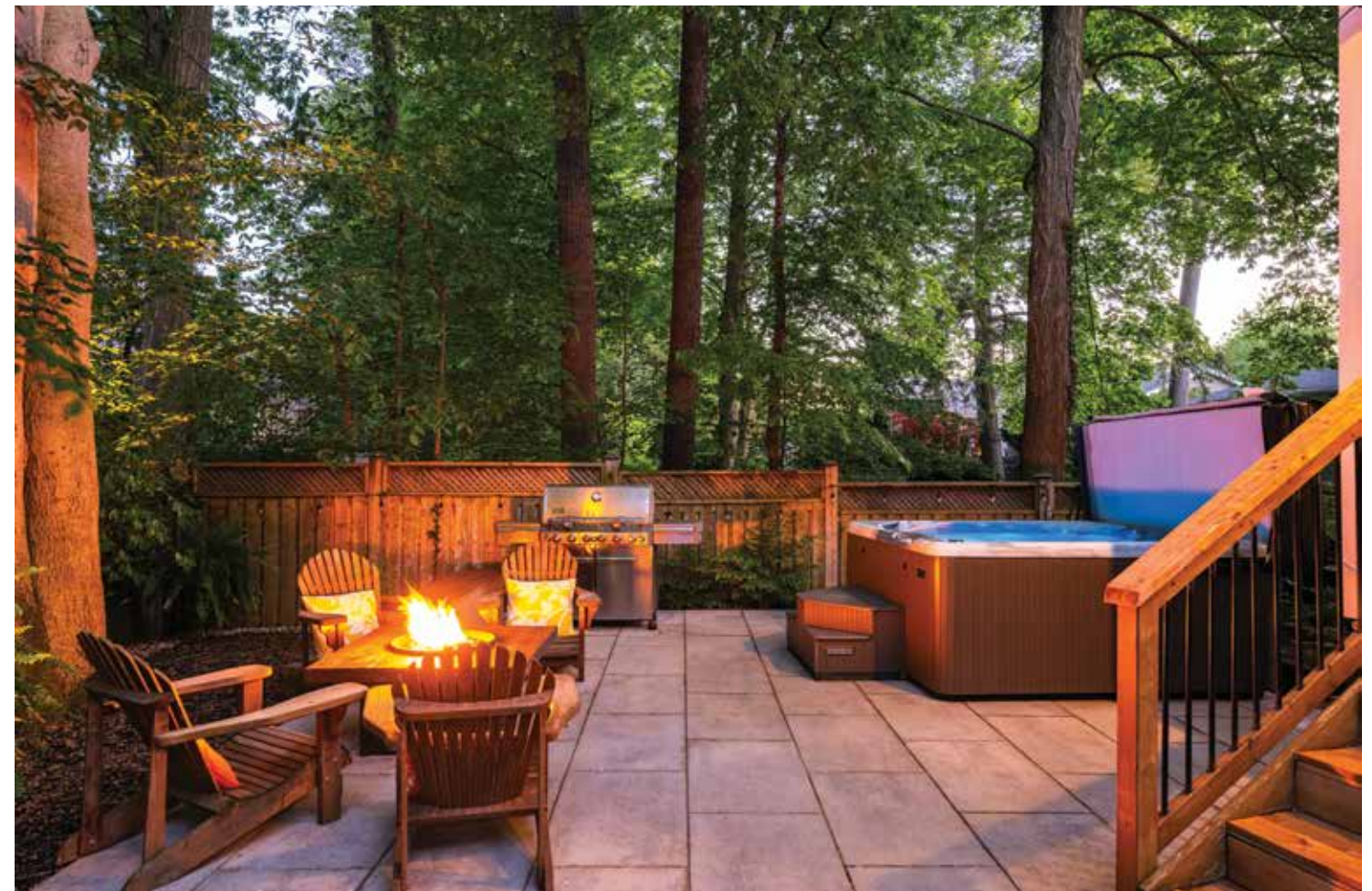




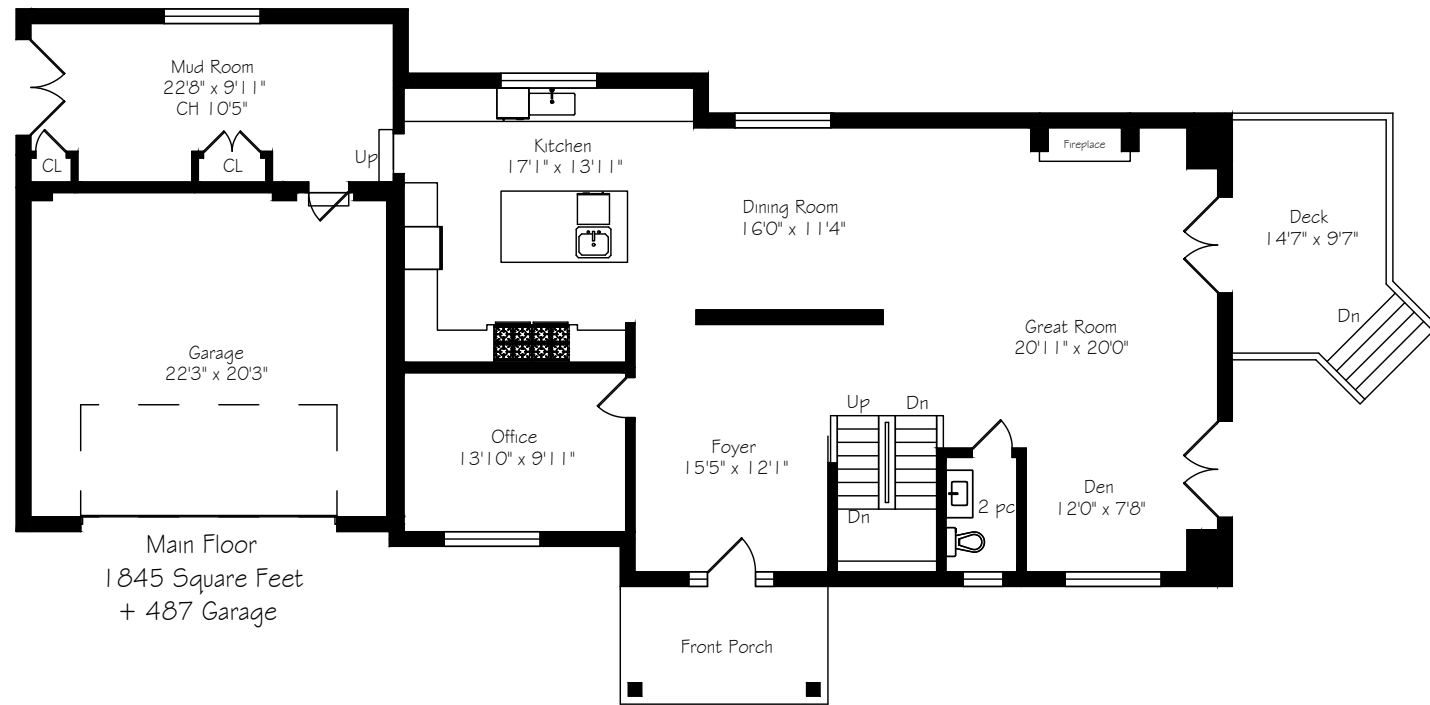
Backyard

Designed for both relaxed living + effortless entertaining, the rear grounds feel like a private summer retreat. Thoughtfully designed with multiple lounge + dining areas, the outdoor setting easily accommodates everything from quiet mornings to summer gatherings with family + friends. The resort-inspired pool is framed by expansive stone patios, manicured hedging + vibrant maples, all beneath a canopy of towering trees that bring a sense of calm and seclusion. Beyond the pool terrace, a separate garden lounge + hot tub create an additional layer of relaxation, tucked within the lush landscaping for a more intimate retreat-like experience.



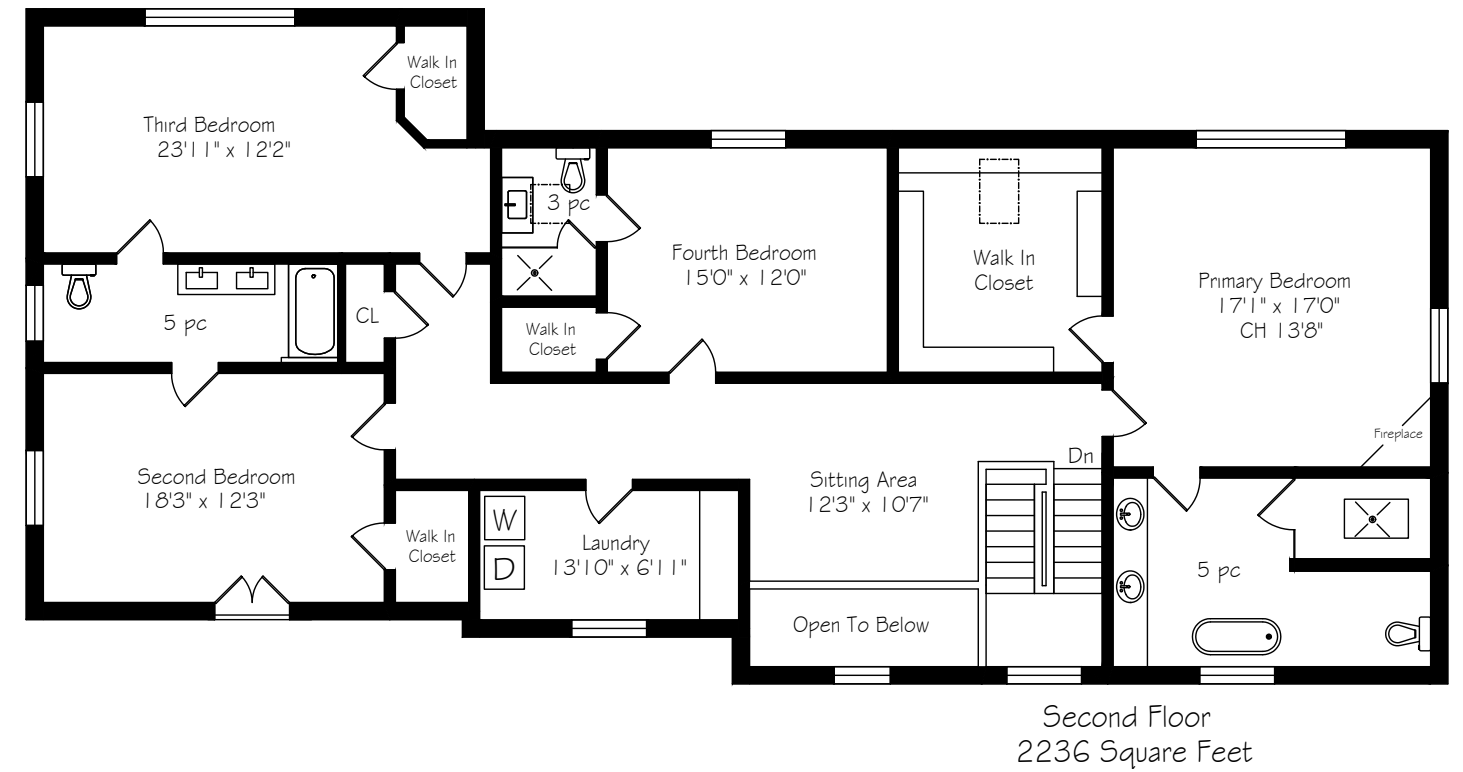


Main Level Floor Plan



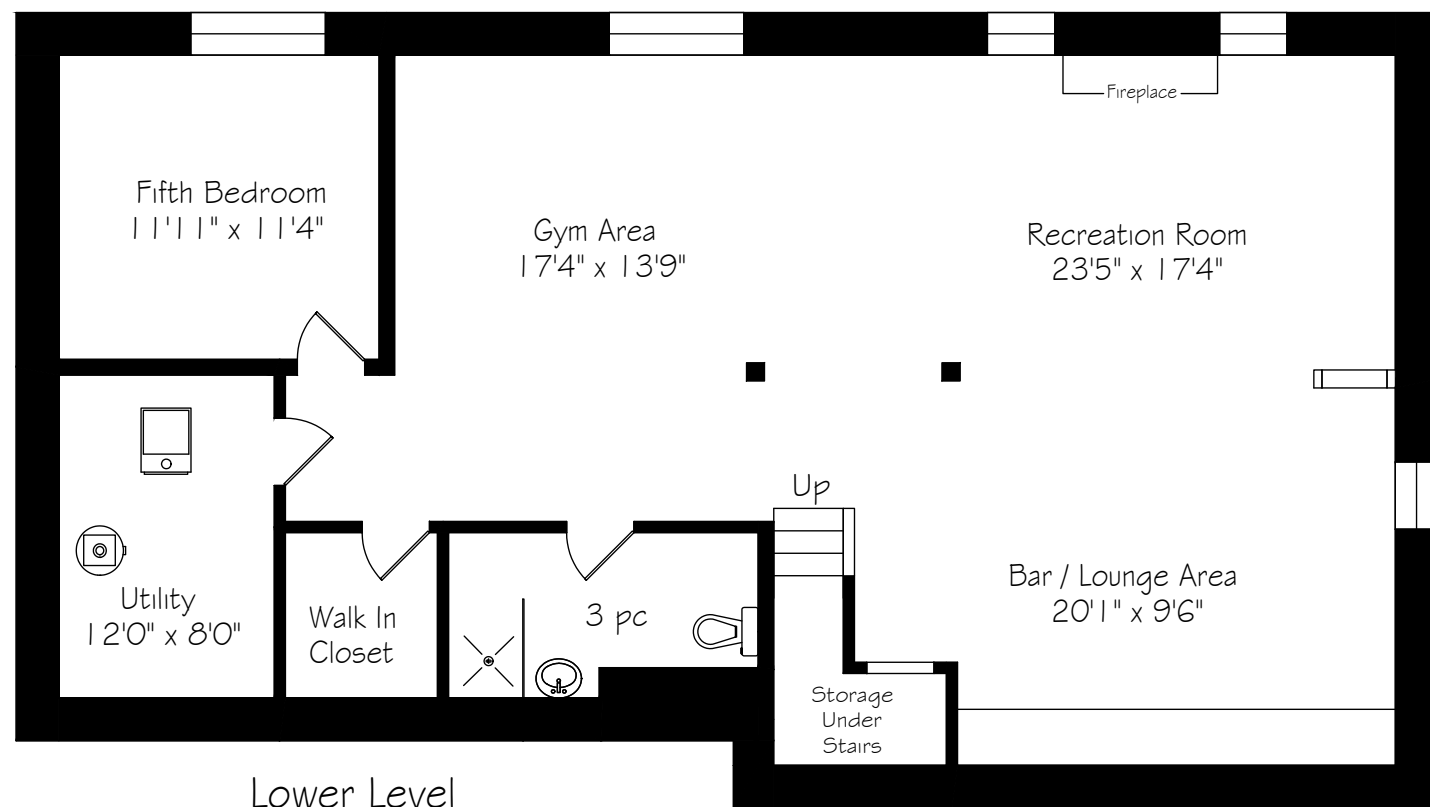
*Room sizes should be considered approximate since measurements are subject to certification.

Second Level Floor Plan



*Room sizes should be considered approximate since measurements are subject to certification.

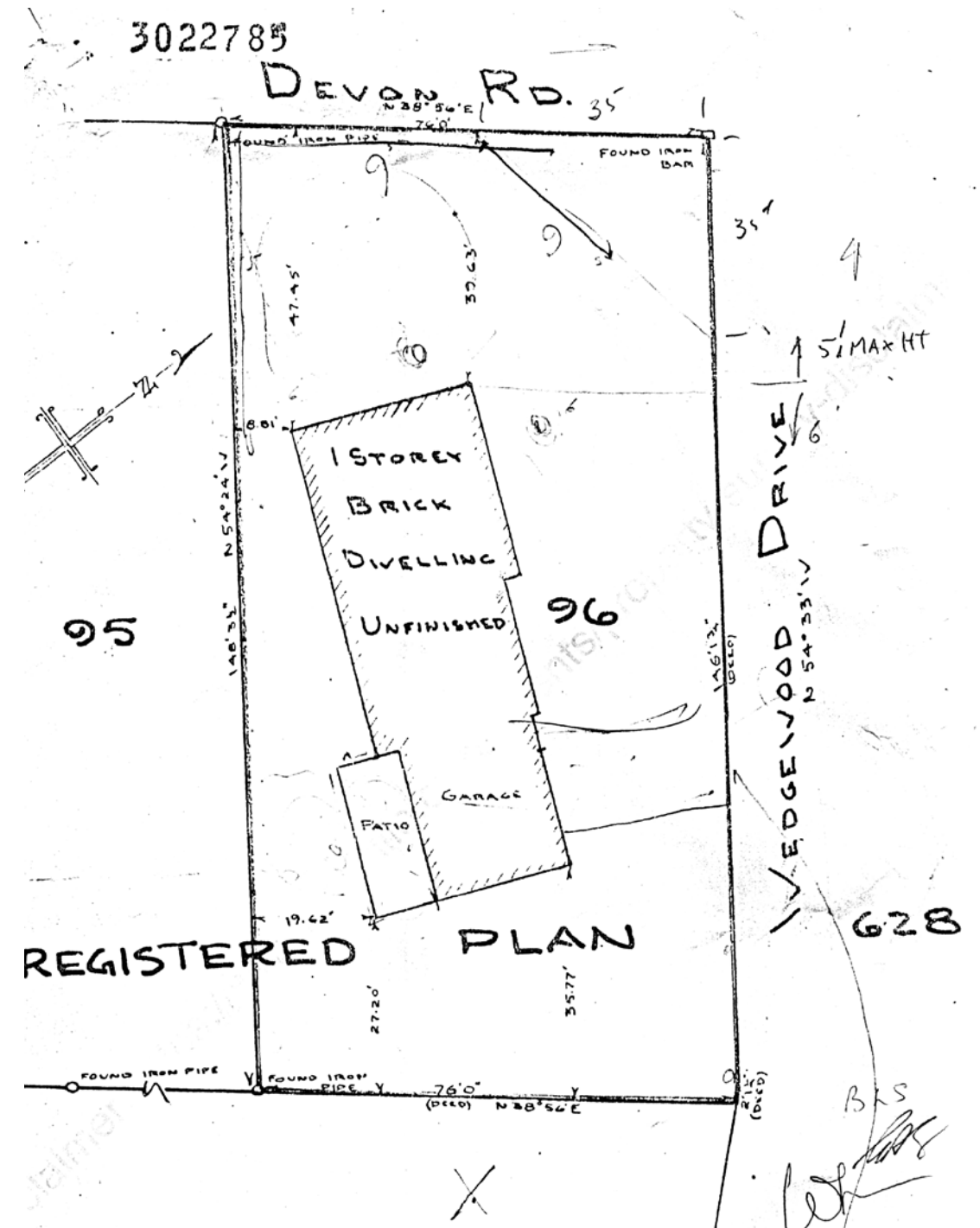
Lower Level Floor Plan



Lower Level
1493 Square Feet

*Room sizes should be considered approximate since measurements are subject to certification.

Survey



Luxury Features

NOTABLE

- Pristine lot
- Circular drive
- Masterfully landscaped
- Mature mixed tree canopy
- Perennial framing gardens
- Stately stone hardscaping
- Private perimeter with mature cedars
- Luxurious updating throughout
- Vaulted ceilings throughout
- Front & rear irrigation
- Salt-water pool + grand hot tub

- MAIN LEVEL -

FOYER

- Stately entry door flanked by linear sidelite + linear transom
- Two-storey ceiling height with captain's window
- Warm oak hardwood flooring
- Expanded baseboards
- Drop chandelier
- Two-step crown moulding
- Pot lighting

OFFICE

- Warm oak hardwood flooring
- Expanded baseboards
- Expansive glazing with front garden views
- Two decorative sconces
- Semi-flush central lighting

POWDER ROOM

- Warm oak hardwood flooring
- Expanded baseboards
- Porcelain Kohler pedestal sink with chrome 3-piece faucet + wood framed mirror

- Flushmount chandelier
- Two-step crown moulding
- Casement window
- Kohler lavatory

DEN

- Warm oak hardwood flooring
- Expanded baseboards
- Triple glazing with California shutters
- Double French door with Juliette balcony
- Two-step crown moulding
- North garden views
- Open to great room

GREAT ROOM

- Warm oak hardwood flooring
- Expanded baseboards
- Double French doors that open to side yard deck lounge with gas firepit
- Feature wall with oversized milled gas fireplace with dedicated media
- Two-step crown moulding
- Pot lighting
- Open to dining

DINING ROOM

- Warm oak hardwood flooring
- Expanded baseboards
- Expansive glazing with California shutters
- Central chandelier
- Pot lighting

EAT-IN KITCHEN

- Custom cabinetry by Top Notch Kitchens
- Warm oak hardwood flooring

- Expanded baseboards
- Abundance of full-height white cabinetry
- With select glass features
- Deep drawers + closed storage
- Granite counters with micro-marbled tile back splash
- Full-height pantry with deep shelves + lower drawers
- Central island with granite top, seating + stainless prep sink
- Perimeter counter with double stainless sink with brushed chrome faucet, filtered water tap + garburator
- Commercial grade appliances:
- Viking 6-burner + griddle gas stove with double ovens
- Stainless venta-hood vent hood
- Stainless Viking dishwasher
- Stainless drawer Thermador microwave
- Panelled Sub-Zero fridge/freezer
- Stainless double drawer Thermador fridge
- Pot lighting
- Central pendant lighting
- Two-step crown moulding

MUDROOM

- Expansive space
- Interior garage access
- Travertine tile flooring
- Beadboard ¾ wall covering
- Expanded baseboards
- Double closet with shelves + hanging storage
- Closet with shelves
- Triple glazing

- Double French doors lead to backyard oasis
- Semi-flush lighting

GARAGE

- Full-height double garage
- Interior access
- Slat storage walls
- Double glazing
- Automatic opener on doors
- Central vac

- UPPER LEVEL -

- Warm oak stairs with black spindles
- Warm oak hardwood flooring throughout
- Expanded baseboards
- Captain's window
- Drop chandelier
- Open to below

PRIMARY BEDROOM

- Vaulted ceiling
- Warm oak hardwood flooring
- Expanded baseboards
- Expansive glazing with California shutters
- Corner gas fireplace with milled + marble surround
- Central globe chandelier

DRESSING ROOM

- Warm oak hardwood flooring
- Built-in closet system with open + closed storage; drawers + hanging storage
- Built-in vanity with framed mirror + sconces
- Semi-flush lighting
- Linear sky-light

Luxury Features

PRIMARY ENSUITE

- Vaulted ceiling
- Heated linear marble tile flooring
- Expanded baseboards
- Double glazing with California shutters
- Expansive double vanity with closed storage + brushed chrome hardware
- Pure white quartz top, Kohler sinks + chrome Riobel 3-piece faucets
- Full-wall mirror with sconces
- Marble soaked glass enclosed shower with linear skylight + chrome Hansgrohe fixtures with jets
- Victoria Albert soaker tub with floor-mounted chrome Rubi fixtures
- Central petite chandelier
- Kohler lavatory
- Two wall sconces
- Pot lighting

BEDROOM 2

- Plush neutral broadloom
- Expanded baseboards
- Double glazing
- French doors with Juliette balcony
- Walk-in closet with shelves + hanging storage
- Central chandelier

SHARED ENSUITE

- Marbled micro tile flooring
- Expanded baseboards
- Casement glazing
- double vanity with marble top + chrome Moen faucets

- Two mirrors with sconces
- Soaker tub with marble tile surround + chrome Hansgrohe fixtures
- Kohler lavatory

BEDROOM 3

- Plush neutral broadloom
- Expanded baseboards
- Expansive glazing
- Media wall
- Central chandelier
- Walk-in closet with shelves + hanging storage

BEDROOM 4

- Plush neutral broadloom
- Expanded baseboards
- Double glazing
- Central chandelier
- Media wall
- Walk-in closet with shelves + hanging storage
- Flushmount lighting

ENSUITE BATH

- Micro marble tile flooring
- Expanded baseboards
- Floating vanity with closed storage, glass counter with sloped sink + chrome faucet
- Framed mirror + sconce
- Skylight
- Glass enclosed shower with micro marble floor + stone tile surround + chrome Hansgrohe fixtures
- Kohler lavatory

Luxury Features

LAUNDRY

- Front loading LG washer + dryer pair
- Casement glazing
- Folding counter with closed lower storage

- LOWER LEVEL -

- Warm oak stairs with black spindles
- Plush broadloom
- Expanded baseboards
- Egress windows throughout
- Under-stair storage
- Pot lighting

RECREATION ROOM

- Plush neutral broadloom
- Expanded baseboards
- Ample space for family gatherings
- Central stone wrapped gas fireplace flanked by two casement windows, dedicated media
- Pot lighting
- Flushmount lighting

BAR/GAMES AREA

- Plush neutral broadloom
- Expanded baseboards
- Flexible space
- Custom bar area with closed lower wood cabinetry banquet with granite top + stainless bar sink
- Jenn-Air bev fridge
- Casement window

- Pot lighting
- Flushmount lighting
- Open to rec space

GYM AREA

- Plush neutral broadloom
- Expanded baseboards
- Flushmount lighting + pot lighting
- Double glazing

BEDROOM 5

- Plush broadloom
- Expanded baseboards
- Double windows
- Semi-flush lighting
- Walk-in closet via hallway

BATHROOM

- Polished tile flooring
- Expanded baseboards
- Kohler porcelain pedestal vanity with 3-piece chrome American Standard fixture
- Framed mirror + sconce
- Glass shower with micro-tile floor + tile surround + chrome Hansgrohe fixtures
- Kohler lavatory
- Pot lighting
- Flushmount lighting

MECHANICAL

- Extra storage area
- HE American Standard furnace with GeneralAire humidifier
- Bradford White hot water heater (rented)

- EXTERIOR -

NORTH SIDE YARD

- Perimeter fencing + mature cedars provide ample privacy
- Lounge deck with central concrete gas firepit
- Perfect space for lounging
- Flat grassy area

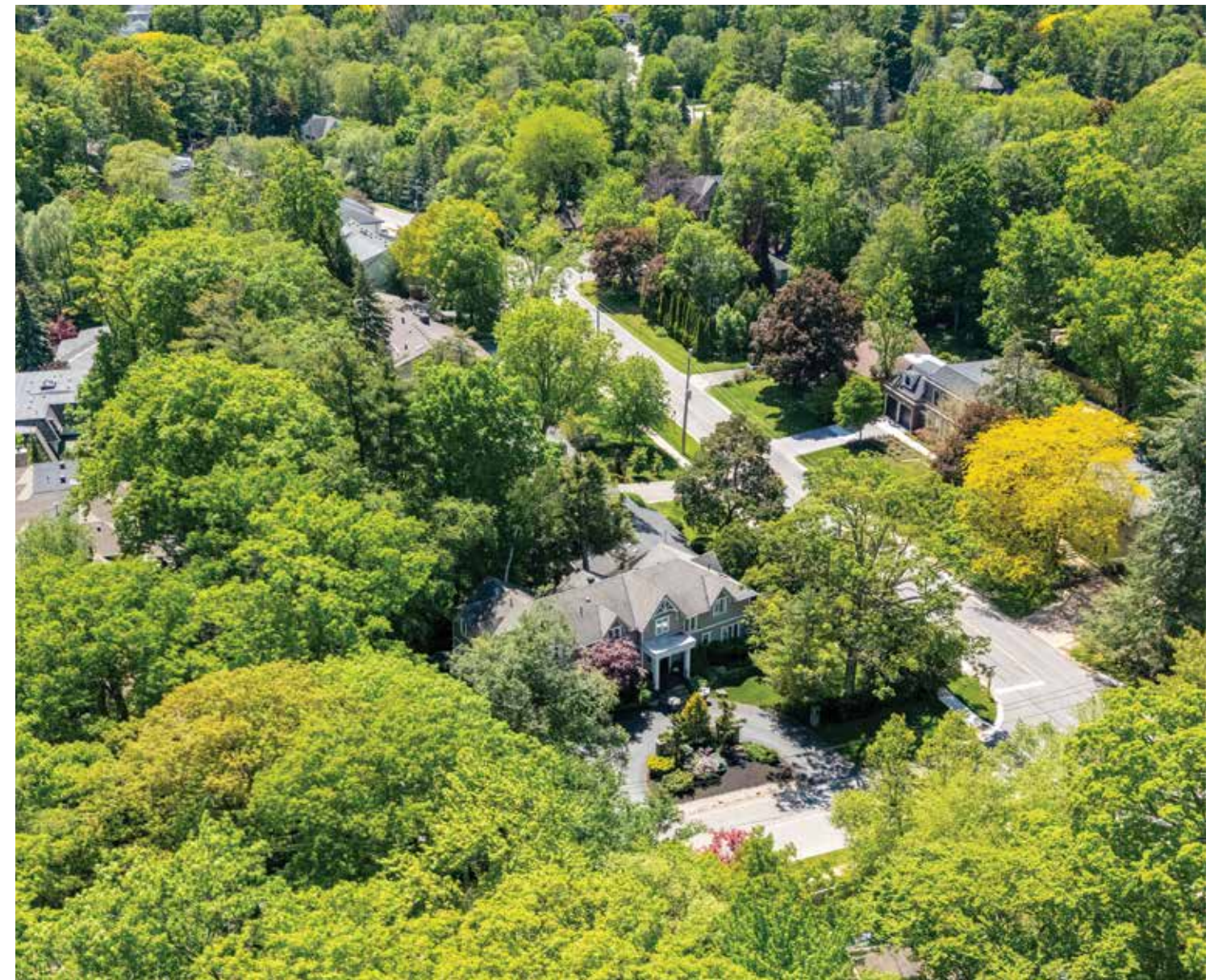
REAR

- Fully fenced
- Framing perennial gardens
- Framing mixed topiary
- Expansive stone patio for al fresco dining
- Pool house with concealed equipment
- Inground pool framed with flat stone
- Pool-side stone lounge, perfect for lounging
- Hot tub
- Flat grassy area
- Gas BBQ line
- Landscape lighting
- Irrigation system

FRONT

- Pristine landscaping
- Mature tree canopy
- Framing perennial gardens
- Circular driveway
- Stone walk-way leads to portico
- Landscape lighting
- Irrigation system

*Notwithstanding any items identified as features or inclusions or exclusions in this brochure, only those items identified as inclusions in the Agreement of Purchase and sale will be deemed an inclusion.



About The Neighbourhood

Morrison is one of Oakville's most prestigious neighbourhoods, known for its canopy of century-old trees, quiet streets and generous lots that create a tranquil, Muskoka-like atmosphere. Its central location offers residents the best of both worlds; a private, natural setting just moments from Oakville's vibrant downtown, the lakefront and an array of schools and amenities.

Life in Morrison feels serene yet connected. Families are drawn to its lush landscape and welcoming community spirit, where neighbours enjoy peaceful walks beneath towering trees and the convenience of nearby shops and dining. Locals often point to leisurely walks shaded by century-old oaks or afternoons at Gairloch Gardens as the simple pleasures that define Morrison's quiet prestige.



GoodaleMillerTeam
CENTURY 21 MILLER REAL ESTATE LTD. BROKERAGE

905.338.2121 | GoodaleMillerTeam.com