

# Listings Gallery

September 26, 2025



## Expert Craftsmanship with Sweeping Views

Every detail in this home was designed with care when built in 2024. The vaulted living room is filled with lots of natural light. There are hardwood floors with radiant heat, a beautiful stainless steel kitchen, and an amazing deck with a hot tub. Come see!

See page 7 for more details.

Ludlow & Okemo Valley's Leading Real Estate Source since 1958

213 Main Street, Suite 3  
Ludlow, VT 05149  
info@okemorealestate.com  
okemorealestate.com  
802-228-8811

**MARY W DAVIS**  
REALTOR & ASSOCIATES



# MARY W DAVIS

## REALTOR & ASSOCIATES

Year after year we bring exceptional service to the Okemo Valley. Our integrity, professionalism and market expertise allow us to provide you with a positive real estate experience and rewarding results. The company's focus is to provide the highest quality buying or selling experience. Our priority is being the trusted, knowledgeable, professional real estate resource in the Okemo Valley market. It will be our privilege to assist you in achieving your real estate goals.



Call us or email us seven days a week. We look forward to hearing from you!



802-228-8811 | [www.okemorealestate.com](http://www.okemorealestate.com)  
info@davisandcompany.com | Ludlow Shopping Center  
PO Box 419, Ludlow, VT 05149



## 61 Acre Estate with Sweeping Views

This fabulous home is in the prestigious South Hill area on 61 acres, including a pond. You will love the circular living room with woodburning fireplace, the updated kitchen, and the newly constructed gazebo.

657 Town Farm Road

4 BR, 4.5 BA | MLS #5045098 | \$2,600,000





## Spacious Newly Constructed Home

Energy efficient home with over 6,000 square feet of living space on 3 levels. Enjoy luxurious open living, within walking distance to slopes and the Base Lodge area.

113 North Village Road

5 BR, 5.5 BA | .8 Acre | MLS #5012032 | \$2,650,000





## Stunning Waterfront Home on Lake Rescue

This home has 100 ft of deep water frontage on the East side of the lake, so you will love the dramatic sunsets over the water. Looking for a great lake and skiing lifestyle? Enjoy every luxury, only 15 minutes to Okemo Mountain and Ludlow village.

7 Norman Drive

4 BR, 3.5 BA | .39 Acre | MLS #5051803 | \$1,990,000



MARY W. DAVIS REALTOR 802.228.8811



## Exquisite Vermont Estate with Reservoir Views

This home blends rustic elegance with modern comfort. You'll love the light-filled open living/dining/kitchen area, stone-backed gas fireplace, private primary suite, spacious recreation room, and 2 garages with a gym over 1.

44 John Deere Drive

4 BR, 4 BA | 1.57 Acres | MLS #5059908 | \$1,450,000





## Expert Craftsmanship with Sweeping Views

Every detail in this home was designed with care when built in 2024. The vaulted living room is filled with lots of natural light. There are hardwood floors with radiant heat, a beautiful stainless steel kitchen, and an amazing desk with a hot tub. Come see!

145 Russell Road, Cavendish

4 BR, 3 BA | 12.9 Acres | MLS #5062223 | \$1,300,000



MARY W. DAVIS REALTOR 802.228.8811



## New Construction Opportunity on Okemo Mountain

Located just off Okemo Ridge Access Road and only minutes from Okemo's base lodge, this brand-new 3-bedroom home, with septic for a 4th bedroom, is being built by a highly regarded local builder. Completion within 9 months of contract signing.

8 Okemo Acres Road

3 BR, 3.5 BA | 0.90 Acres | MLS #5062231 | \$1,050,000



## Very Spacious Home on 3.52 Acres

Make memories and invite all your friends and family to this tasteful home. Custom country kitchen, 2 woodburning fireplaces, and much more. Access this private location after skiing without going into town.

151 Smokerise Road

3 BR + Loft, 5 BA | MLS #5049815 | \$875,000





## Stunning Custom Home with Privacy on 10+ Acres

The spacious open-living layout of this home includes beautiful beams, a large kitchen island, living room with gas fireplace, and luxurious main floor primary suite with deck.

Enjoy many additional wonderful features, just 9 minutes to Okemo

222 Andover Road

5 BR, 3.5 BA | 10.59 Acres | MLS #5018345 | \$849,000





## Charming Renovated Chester Farmhouse

This beautifully renovated home is on a level half-acre lot just steps from Chester's Village Green, shops and local amenities. Enjoy the spacious kitchen, luxurious primary suite with new custom bathroom, the wrap-around porch and Zen garden.

95 Church Street, Chester

4 BR, 3 BA | 0.50 Acre | MLS #5054818 | \$649,900





## Chester Haven on a Quiet Street

This spacious 5-bedroom, 3.5-bath offers over 3,400 sq ft of beautifully designed living space. Enjoy the open concept kitchen, dining and living areas that flow onto a large deck. Two oversized primary suites provide luxurious comfort.

1057 Quarry Road, Chester

5 BR, 3.5 BA | MLS #5047173 | \$599,999





## Exceptional Multi-Family Property

This updated investment property has 3 units and is just 7.2 miles from Okemo Mountain. There are two 2-bedroom units and one 1-bedroom unit. All units are thoughtfully appointed and have in-unit washers and dryers.

77 Belmont Road, Mt Holly  
5 BR , 3 BA | 0.75 Acre | MLS #5059701 | \$598,000



## Perfect Getaway for All Seasons

Enjoy two levels plus a loft in this classic A-Frame with deeded rights to Lake Pauline. With a wooded 9.1 acre lot, you will have easy access to skiing, snowmobiling, swimming, and golf. Come experience the fun.

400 East Lake Road  
3 BR, 2 BA | 9.1 Acres | MLS #5048949 | \$550,000





## Country Living with Mountain Views

Experience the tranquility of country living with breathtaking mountain views in this charming single-level home. This home has a wall of windows in the living and dining rooms, a laundry in the ensuite primary room and a two-car garage.

929 Packer Road

2 BR + Bonus Room, 2 BA | 5.3 Acres | MLS #5054879 | \$485,000



## Charming Lake Cottage

This delightful cottage on Lake Pauline has over 113+ feet of waterfront and a garage for all your water toys. Enjoy the the vintage details year-round. This property was unaffected by recent flooding. It is also less than 2 miles from Okemo Mountain.

121 East Lake Road

3 BR, 1BA | MLS #5049832 | \$425,000





## Great Fixer-Upper in a Dream Location

This is a spacious home with three fireplaces and a two-car heated garage. It is very close to Okemo Mountain and everything that Ludlow Village offers.

143 Okemo Acres

4 BR, 2.5 BA | .72 Acre | MLS #5041956 | \$465,000



## Spacious Home with Lots of Potential

Walk to Dorsey Park and Ludlow village from this 9-room home. A large detached garage is great for storage or a workshop. Several improvements made.

2 Pond Street

4 BR, 1 BA | .15 Acre | MLS #5029054 | \$299,000





## Your Perfect Mountain Getaway

This ski-in/ski-out , end-unit townhome has 2 bedrooms with en-suites, allowing for extra privacy. You will love the open-concept kitchen, living and dining room. Enjoy all the Solitude Village amenities, including the private recreation center.

Solitude Village A-4 | 4 BR, 3.5 BA | MLS #5048683 | \$1,499,000

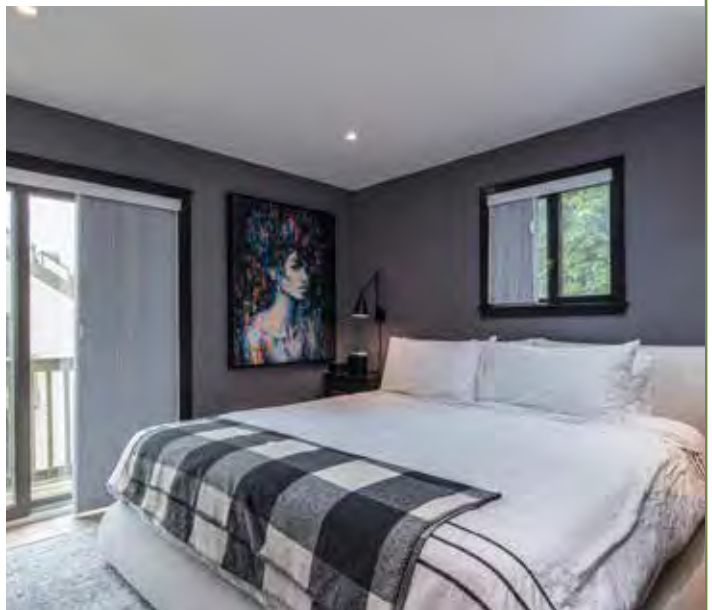




## Beautifully Updated Premier Slopeside Location

This end-unit is in one of the most desirable spots on the mountain. No detail was overlooked in it's renovation. You will fully enjoy all the luxury finishes, the spacious private covered deck with hot tub and the sweeping views.

Okemo Trailside 37E | 4 BR, 2 BA | MLS #5053487 | \$1,495,000





## Directly on Sachem Trail

Step-out onto the snow from your mudroom or lower sliding door. Enjoy the spacious kitchen, light-filled living areas and a wood-burning fireplace. It's all here for you!

Okemo Trailside, 37B | 3 BR + Bonus Room, 2.5 BA

MLS #5052109 | \$945,000



## Luxury Amenities with Stunning Views

You will have true ski-in/ski-out access from this gorgeous two bedroom townhome. After skiing, enjoy the amenities at the SouthFace Village recreation center or cozy up in front of your gas fireplace. You will love this bright, sunny two-level home.

SouthFace Village TM-6 | 2 BR, 2.5 BA | MLS #5056767 | \$795,000





## Beautifully Updated Okemo Trailside Townhome

This tri-level end-unit has the feel of being a country home surrounded by lush trees. Enjoy the open kitchen, living and dining rooms, woodburning fireplace, and access to a wrap-around deck. The private primary suite has a fully remodeled bath.

Okemo Trailside 48A | 4 BR , 2.5 BA | MLS #5047121 | \$749,000



## Panoramic Views

Top of Okemo Trailside, just below Catnap ski trail. Three bedroom plus family room offering panoramic mountain views. Open living, fireplace, and large kitchen.

Okemo Trailside Ext, 46C | 3 BR + Family Room, 2.5 BA

MLS #4985281 | \$739,000





## Townhome with Fabulous Views to the East

This nicely updated unit has great views from it's mid-mountain location. You will enjoy the open living, beautiful kitchen, and covered deck with hot tub.

Okemo Trailside 42D | 3 BR, 2.5 BA | MLS #5051852 | \$725,000



## Trailside End-Unit with Beautiful Mountain Views

Soak in your hot tub on the wrap-around deck with beautiful mountain views.

This condo has 3-levels with new energy-efficient furnace, windows and sliders. Take advantage of the community pool and tennis courts.

Okemo Trailside, 43D | 4BR, 2.5 BA | MLS #5049668 | \$695,000





## Updated Kettlebrook Condo with Ski-on/ Ski-off Access

You will love the living room with cathedral ceiling, wood-burning fireplace, and well-designed kitchen, not to mention how accessible this condo is to the slopes. Enjoy the many updates in this light and airy unit.

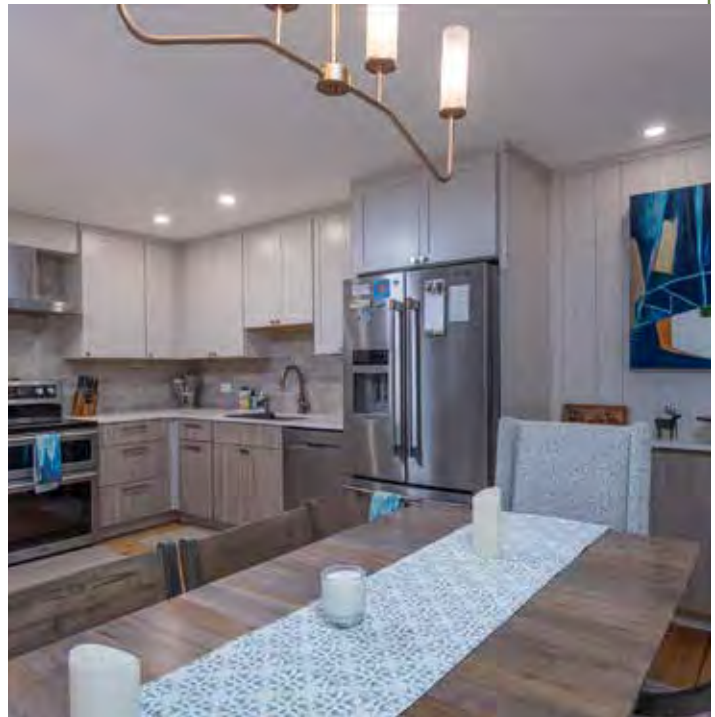
Kettlebrook, D-5 | 2 BR, 2 BA | MLS #5050370 | \$695,000



## Serene Living in This Beautiful Townhome

This dream retreat has open living with a woodburning fireplace, new mini-splits for heat and A/C, and a fabulous updated kitchen. Enjoy 2 decks in this gorgeous natural setting. You will be close to Okemo, Killington, and the Lake District.

Hawk Ledges 14 | 3 BR + Office, 3 BA | MLS #5042613 | \$475,000





## Warm and Charming with Open Floor Plan

Nicely renovated open living, two-level condo near Sachem Trail.  
Enjoy this ski season and have fun at the pool and tennis court next summer.

Okemo Trailside 23-C Upper  
2 BR, 2 BA | MLS #4974778 | \$480,000



## Immaculate End Unit at Castle Hill

Two levels of spacious living with quality finishes throughout. Enjoy all the amenities of Castle Hill Resort, including the award-winning Castle Hill Restaurant.

28 Carriage Lane, Castle Hill Resort, E-3  
2 BR + Den, 2.5 BA | MLS #5006884 | \$435,000





## Spacious One-Bedroom Close to Sachem Trail

This ski-in/ski-out condo offers flat, easy access to the slopes and community amenities. Enjoy the renovated kitchen and close proximity to the pool and tennis courts.

Okemo Trailside, 22-CL

1 BR with Bunkroom, 1 BA | MLS #5057698 | \$385,000



## Beautifully Remodeled, Slopeside Top-Floor Condo

This is the perfect mountain retreat. Enjoy the newly remodeled kitchen, new flooring, updated bathroom, and stylish furnishings. Turn-key and steps to Okemo base.

Okemo Mountain Lodge, B-301

1 BR, 1 BA | MLS #5032230 | \$385,000





## Direct Slopeside, Top Floor Oversized Condo

Enjoy panoramic view of the slopes. The open living design includes a kitchen with breakfast bar, living room with fireplace, and a large bedroom with a private bath.

Okemo Mountain Lodge, B-305

1 BR, 1 BA | MLS #5031054 | \$350,000



## Enjoy All the Amenities with this Condo

This condo has full ownership with a gas fireplace, restaurant, pool and gym facilities. It is only 3 miles to Okemo and Ludlow Village

The Pointe at Castle Hill, 158

1 BR, 1 BA | MLS #5017358 | \$295,000







## Jackson Gore Village on Okemo

This property includes the Jackson Gore Inn, Adams and Bixby Houses. These units offer a wide variety of on-site amenities. You'll find charm and convenience of a Country Inn with the benefit of hotel services.

Unit #	Qtr.	Price	#BR	#BA	Sq. Ft.	MLS #	Unit Type
B#840/842	FULL	\$650,000	2 BR	3 BA	1367	5049278	2A
B#640/642	FULL	\$625,000	2 BR	3 BA	1369	5039173	2A
A#717/719	Qtr. I thru IV	\$595,000	1BR	2 BA	957	5011979	C-II
B#639/641	FULL	\$550,000	1 BR	2 BA	1112	5051139	1D
A#705/707	Qtr. IV	\$175,000	3 BR	3 BA	1854	5015926	G-II
J#444/446	Qtr. III	\$152,500	2 BR + Loft	3 BA	1355	5028800	E-Loft
J#225/227	Qtr. II	\$147,000	2 BR	3 BA	1190	5058452	F-Deck
J#246/248	Qtr. I	\$105,000	2 BR	2 BA	1120	5009860	J-Deck
A#505/507	Qtr. II	\$103,000	2 BR	3 BA	1367	5048259	F-II
J#368/370	Qtr. IV	\$79,500	1 BR	2 BA	775	5054540	C
J#228/230	Qtr. III	\$74,000	1 BR	2 BA	775	5036267	C
J#418	Qtr. I	\$74,000	1 BR	2 BA	775	5049401	B
J#434	Qtr. I	\$70,000	1 BR	2 BA	775	4990217	B
A#709/711	Qtr. I	\$69,900	1 BR	2 BA	957	5053868	C-II
J#416	Qtr. I	\$69,000	1 BR	2 BR	775	5055423	B
J#274/276	Qtr. II	\$66,000	1 BR	2 BA	775	5034160	C

Interested in a Short-Term Rental? Contact our Inside Edge Team



**RENTALS**  
**INSIDE EDGE**  
 AT OKEMO

802-298-0087

[www.insideedgerentals.com](http://www.insideedgerentals.com)