

Listings Gallery

January 23, 2026



Beautifully Updated Premier Slopeside Location

This end-unit is in one of the most desirable spots on the mountain. No detail was overlooked in its renovation. You will fully enjoy all the luxury finishes, the spacious private covered deck with hot tub and the sweeping views.

See page 11 for more details.

Ludlow & Okemo Valley's Leading Real Estate Source since 1958

213 Main Street, Suite 3
Ludlow, VT 05149
info@okemorealestate.com
okemorealestate.com
802-228-8811

MARY W DAVIS
REALTOR & ASSOCIATES



MARY W DAVIS

REALTOR & ASSOCIATES

Year after year we bring exceptional service to the Okemo Valley. Our integrity, professionalism and market expertise allow us to provide you with a positive real estate experience and rewarding results. The company's focus is to provide the highest quality buying or selling experience. Our priority is being the trusted, knowledgeable, professional real estate resource in the Okemo Valley market. It will be our privilege to assist you in achieving your real estate goals.



Call us or email us seven days a week. We look forward to hearing from you!



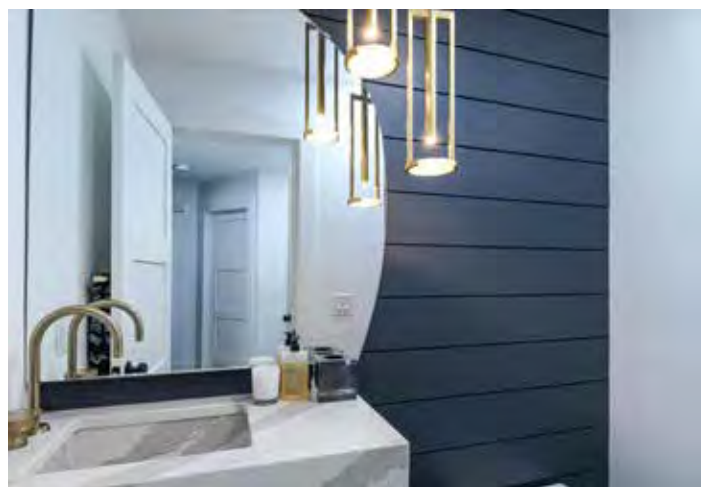
802-228-8811 | www.okemorealestate.com
info@davisandcompany.com | Ludlow Shopping Center
PO Box 419, Ludlow, VT 05149

Spacious Luxury Slopeside Townhouse

Sitting just steps from the trail, this completely remodeled townhouse has 3 bedroom suites, an extraordinary wet-room in the primary bath and a custom wine room with a butler's kitchen. This is a show-stopper with every surface beautifully designed. Too much to mention here. Please come see in person.

Solitude Village D-1

5 BR, 5.5 BA | MLS #5070117 | \$3,150,000



Spacious Newly Constructed Home

Energy efficient home with over 6,000 square feet of living space on 3 levels. Enjoy luxurious open living, within walking distance to slopes and the Base Lodge area.

113 North Village Road

5 BR, 5.5 BA | .8 Acre | MLS #5012032 | \$2,650,000



61 Acre Estate with Sweeping Views

This fabulous home is in the prestigious South Hill area on 61 acres, including a pond. You will love the circular living room with woodburning fireplace, the updated kitchen, and the newly constructed gazebo. Less than 10 minutes to Okemo and Ludlow Village.

657 Town Farm Road | 4 BR, 4.5 BA | MLS #5045098 | \$2,495,000



Expert Craftsmanship with Sweeping Views

Every detail in this home was designed with care when built in 2024. The vaulted living room is filled with lots of natural light. There are hardwood floors with radiant heat, a beautiful stainless steel kitchen, and an amazing deck with a hot tub. Come see!

145 Russell Road, Cavendish

4 BR, 3 BA | 12.9 Acres | MLS #5073427 | \$1,175,000



New Construction Opportunity on Okemo Mountain

Located just off Okemo Ridge Access Road and only minutes from Okemo's base lodge, this brand-new 3-bedroom home, with septic for a 4th bedroom, is being built by a highly regarded local builder. Completion within 9 months of contract signing.

8 Okemo Acres Road

3 BR, 3.5 BA | 0.90 Acres | MLS #5062231 | \$1,050,000



Great Log Home on 14+ Wooded Acres

Enjoy the primary bedroom suite, the light-filled family room, the well-appointed kitchen, and the wraparound deck. This home adjoins the Green Mountain National Forest and sits above a gentle stream. What's your Vermont dream? Welcome home.

660 Patch Hill Road, Mt Holly

3 BR, 3.5 BA | 14+ Acres | MLS #5074696 | \$899,999



Exceptional Multi-Family Property

This updated investment property has 3 units and is just 7.2 miles from Okemo Mountain. There are two 2-bedroom units and one 1-bedroom unit. All units are thoughtfully appointed and have in-unit washers and dryers.

77 Belmont Road, Mt Holly

5 BR, 3 BA | 0.75 Acre | MLS #5059701 | \$598,000



Chester Haven on a Quiet Street

This spacious 5-bedroom, 3.5-bath offers over 3,400 sq ft of beautifully designed living space. Enjoy the open concept kitchen, dining and living areas that flow onto a large deck. Two oversized primary suites provide luxurious comfort.

1057 Quarry Road, Chester

5 BR, 3.5 BA | MLS #5047173 | \$594,000



Country Living with Mountain Views

Experience the tranquility of country living with breathtaking mountain views in this charming single-level home. This home has a wall of windows in the living and dining rooms, a laundry in the ensuite primary room and a two-car garage.

929 Packer Road

2 BR + Bonus Room, 2 BA | 5.3 Acres | MLS #5054879 | \$465,000



Charming Lake Cottage

This delightful cottage on Lake Pauline has over 113+ feet of waterfront and a garage for all your water toys. Enjoy the the vintage details year-round. This property was unaffected by recent flooding. It is also less than 2 miles from Okemo Mountain.

121 East Lake Road

3 BR, 1BA | MLS #5049832 | \$425,000



Spacious Home with Lots of Potential

Walk to Dorsey Park and Ludlow village from this 9-room home. A large detached garage is great for storage or a workshop. Several improvements made.

2 Pond Street

4 BR, 1 BA | .15 Acre | MLS #5029054 | \$269,000



Your Perfect Mountain Getaway

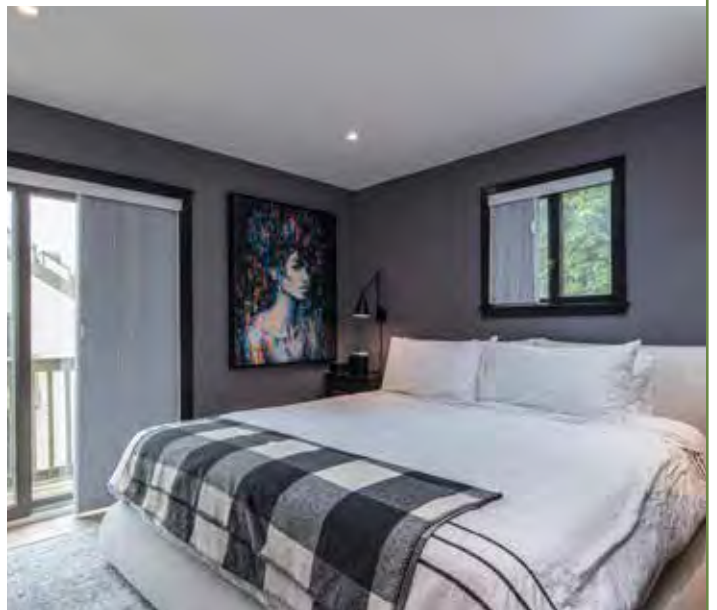
This ski-in/ski-out , end-unit townhome has 2 bedrooms with en-suites, allowing for extra privacy. You will love the open-concept kitchen, living and dining room. Enjoy all the Solitude Village amenities, including the private recreation center.

Solitude Village A-4 | 4 BR, 3.5 BA | MLS #5048683 | \$1,499,000



Beautifully Updated Premier Slopeside Location

This end-unit is in one of the most desirable spots on the mountain. No detail was overlooked in it's renovation. You will fully enjoy all the luxury finishes, the spacious private covered deck with hot tub and the sweeping views. Okemo Tralside 37E | 4 BR, 2 BA | MLS #5053487 | \$1,495,000



Pristine, Ski-on/Ski-off Residence

This unit has never been rented and has been meticulously maintained. With a contemporary, open-concept layout and beautifully appointed features, you will love the close proximity to community amenities, plus easy access to the Sunshine Quad chairlift.

SouthFace Village SM-3 | 2 BR , 2.5 BA | MLS #5073205 | \$825,000



Luxury Amenities with Stunning Views

You will have true ski-in/ski-out access from this gorgeous two bedroom townhome. After skiing, enjoy the amenities at the SouthFace Village recreation center or cozy up in front of your gas fireplace. You will love this bright, sunny two-level home.

SouthFace Village TM-6 | 2 BR, 2.5 BA | MLS #5056767 | \$795,000



MARY W. DAVIS REALTOR 802.228.8811

Beautifully Renovated Three Bedroom

Enjoy the new gas fireplace in the open living area. The lower level has a bedroom/den, full bath, second gas fireplace, wet bar and a door that leads outside to the slopes.

Kettle Brook J-6 | 3 BR, 2 BA | MLS #5072348 | \$749,000



Panoramic Views

Top of Okemo Trailside, just below Catnap ski trail. Three bedroom plus family room offering panoramic mountain views. Open living, fireplace, and large kitchen.

Okemo Trailside Ext, 46C | 3 BR + Family Room, 2.5 BA

MLS #4985281 | \$699,000



Beautiful Townhome with Mountain Views

This unit is privately located bordering woodland with long distance mountain views.

Enjoy the custom kitchen, hardwood floors, woodburning fireplace, and the skylit whirlpool tub in the primary suite. The lower level includes a sauna.

Okemo Trailside 41C | 3 BR, 2 BA | MLS#5072260 | \$729,0000



Updated Kettlebrook Condo with Ski-on/ Ski-off Access

You will love the living room with cathedral ceiling, wood-burning fireplace, and well-designed kitchen, not to mention how accessible this condo is to the slopes. Enjoy the many updates in this light and airy unit.

Kettlebrook, D-5 | 2 BR, 2 BA | MLS #5050370 | \$649,000



Affordable Trailside End-Unit

This 3 bedroom + den end unit is in great condition. You will love the updated kitchen, main level bath and the new woodburning fireplace. Walk to the Sachem Trail and enjoy the community pool and tennis in summer.

Okemo Trailside, 4B | 3 BR + Den, 2 BA | MLS #5065114 | \$549,000



Gorgeous, Oversized Castle Hill Condo

Enjoy over 2,200 square feet of open living, the cathedral ceiling with a gas fireplace, and the whirlpool bath in the primary suite. This exceptional property offers access to all Castle Hill amenities, plus convenience to both Okemo and Ludlow Village.

Castle Hill, I-4 | 3 BR + Loft, 3.5 BA | MLS #5033022 | \$529,000



Spacious Top-Floor, End Unit

This 3 bedroom + loft end unit has two levels of living space. You will love the cathedral ceilings and gas fireplace. A separate lock-out suite provides potential rental income. Enjoy all the amenities of Castle Hill Resort and Spa.

Castle Hill H-4 | 3 BR + Loft, 3.5 BA | MLS #5070552 | \$525,000



Warm and Charming with Open Floor Plan

Nicely renovated open living, two-level condo near Sachem Trail.

Enjoy this ski season and have fun at the pool and tennis court next summer.

Okemo Trailside 23-C Upper

2 BR, 2 BA | MLS #4974778 | \$460,000



Rare One-Bedroom Walk-out in Solitude Village

One of only 5 in the in the entire community. Enjoy open floor plan living with steps to the Promenade Trail. The deck off the living room has long distance views.

Solitude Village E-103

1 BR, 1.5 BA | MLS #5073155 | \$469,000



Spacious One-Bedroom Close to Sachem Trail

This ski-in/ski-out condo offers flat, easy access to the slopes and community amenities. Enjoy the renovated kitchen and close proximity to the pool and tennis courts.

Okemo Trailside, 22-CL

1 BR with Bunkroom, 1 BA | MLS #5057698 | \$375,000



Direct Slopeside, Top Floor Oversized Condo

Enjoy panoramic view of the slopes. The open living design includes a kitchen with breakfast bar, living room with fireplace, and a large bedroom with a private bath.

Okemo Mountain Lodge, B-305

1 BR, 1 BA | MLS #5031054 | \$350,000



Enjoy All the Amenities with this Condo

This condo has full ownership with a gas fireplace, restaurant, pool and gym facilities. It is only 3 miles to Okemo and Ludlow Village

The Pointe at Castle Hill, 158

1 BR, 1 BA | MLS #5072479 | \$210,000





Jackson Gore Village on Okemo

This property includes the Jackson Gore Inn, Adams and Bixby Houses. These units offer a wide variety of on-site amenities. You'll find charm and convenience of a Country Inn with the benefit of hotel services.

Unit #	Qtr.	Price	#BR	#BA	Sq. Ft.	MLS #	Unit Type
B#840/842	FULL	\$650,000	2 BR	3 BA	1367	5049278	2A
B#640/642	FULL	\$625,000	2 BR	3 BA	1369	5039173	2A
B#639/641	FULL	\$540,000	1 BR	2 BA	1112	5051139	1D
A#705/707	Qtr. IV	\$175,000	3 BR	3 BA	1854	5015926	G-II
J#225/227	Qtr. II	\$139,900	2 BR	3 BA	1190	5058452	F-Deck
J#246/248	Qtr. I	\$105,000	2 BR	2 BA	1120	5009860	J-Deck
A#617/619	Qtr. I	\$102,000	2 BR	3 BA	1367	5067746	F-II
A#505/507	Qtr. II	\$98,000	2 BR	3 BA	1367	5048259	F-II
J#368/370	Qtr. IV	\$79,500	1 BR	2 BA	775	5054540	C
J#228/230	Qtr. III	\$74,000	1 BR	2 BA	775	5036267	C
J#434	Qtr. I	\$70,000	1 BR	2 BA	775	4990217	B
J#416	Qtr. I	\$69,000	1 BR	2 BA	775	5055423	B
J#318/320	Qtr. I	\$69,000	1 BR	2 BA	775	5072201	C-Deck
J#418	Qtr. I	\$68,000	1 BR	2 BA	775	5049401	B

Interested in a short-term rental? Contact our Inside Edge team.



RENTALS
INSIDE EDGE
AT OKEMO

802-298-0087

www.insideedgerentals.com