

Listings Gallery

July 3, 2026



Exceptional Vermont Horse Property

Enjoy a stunning home with a spacious kitchen, an impressive family room with a woodburning fireplace, covered porches, a relaxing hot tub and expansive outdoor spaces. There is a 3-stall barn with tack room, paddock and generous pasture land.

See page 8 for more details.

Ludlow & Okemo Valley's Leading Real Estate Source since 1958

213 Main Street, Suite 3
Ludlow, VT 05149
info@okemorealestate.com
okemorealestate.com
802-228-8811

MARY W DAVIS
REALTOR & ASSOCIATES



MARY W DAVIS

REALTOR & ASSOCIATES

Year after year we bring exceptional service to the Okemo Valley. Our integrity, professionalism and market expertise allow us to provide you with a positive real estate experience and rewarding results. The company's focus is to provide the highest quality buying or selling experience. Our priority is being the trusted, knowledgeable, professional real estate resource in the Okemo Valley market. It will be our privilege to assist you in achieving your real estate goals.



Call us or email us seven days a week. We look forward to hearing from you!



802-228-8811 | www.okemorealestate.com
info@davisandcompany.com | Ludlow Shopping Center
PO Box 419, Ludlow, VT 05149

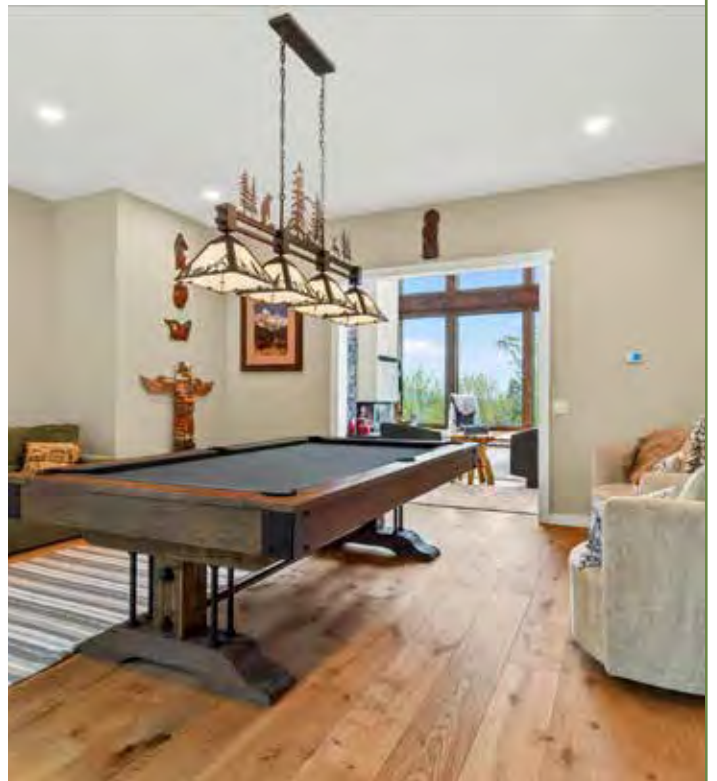
WWW.OKEMOREALESTATE.COM

The Pinnacle of Slopeside Luxury

Positioned between Ledges and Sachem Trails, this ski-in/ski-out home is built with exceptional finishes. Enjoy 2 saunas, 2 fireplaces, a chef's kitchen and a covered hot tub. Step from 2 mudrooms directly onto the snow. Parking for 10+ and a 2-car garage.

112 Snowbridge Road

5 BR,6 BA | .92 Acre | MLS #5092980 | \$4,450,000



Exceptional Lake Rescue Waterfront Retreat

Built with meticulous craftsmanship, this home has a spectacular stone woodburning fireplace, a custom kitchen with two islands, a deck with hot tub, and a two-car garage with an apartment above. You will enjoy breathtaking sunrises and sunsets.

12 Archibald Lane

4 BR, 4.5 BA | .51 Acre | MLS #5086588 | \$3,200,000



Spacious Newly Constructed Home

Energy efficient home with over 6,000 square feet of living space on 3 levels. Enjoy luxurious open living, within walking distance to slopes and the Base Lodge area.

113 North Village Road

5 BR, 5.5 BA | .8 Acre | MLS #5012032 | \$2,650,000



MARY W. DAVIS REALTOR 802.228.8811

Enjoy Breathtaking Sunsets Over the Lake

This exceptional Lake Rescue waterfront home is perfect for year-round living. With an open layout, chef's kitchen, luxurious primary suite, a private dock, stone patio with a hot tub, and an oversized heated garage, you will have every comfort at your fingertips.

11 Fishing Access Road

3 BR, 3 BA | .57 Acre | MLS #5092477 | \$1,790,000



The Essence of Vermont Living

Located just minutes from Okemo, you will love the soaring cathedral ceiling, the stunning wide plank floors and the beautiful fireplace. Enjoy the well-appointed kitchen, the billiard family room and the large deck. This luxurious home is ready for entertaining.

81 Town Farm Road
5 BR, 4.5 BA | 1.0 Acre | MLS #5096704 | \$1,400,000



Exceptional Vermont Horse Property

Enjoy a stunning home with a spacious kitchen, an impressive family room with a woodburning fireplace, covered porches, a relaxing hot tub and expansive outdoor spaces. There is a 3-stall barn with tack room, paddock and generous pasture land.

2141 Twenty Mile Stream Road, Cavendish

5 BR, 4 BA | 23.13 Acres | MLS #5097412 | \$1,300,000



New Construction Opportunity on Okemo Mountain

Located just off Okemo Ridge Access Road and only minutes from Okemo's base lodge, this brand-new 3-bedroom home, with septic for a 4th bedroom, is being built by a highly regarded local builder. Completion within 9 months of contract signing.

8 Okemo Acres Road

3 BR, 3.5 BA | 0.90 Acres | MLS #5062231 | \$1,050,000



Quintessential Vermont Log Home

Enjoy an updated chef's kitchen, a stunning four-season room with radiant heat, a lower level guest area, a covered front porch, a private stocked pond, a Jacuzzi hot tub, and a 32-panel solar array. This charming and tranquil home is set on over 10 private acres.

566 Patch Hill Road, Mt Holly

3 BR, 2.5BA | 10.77 Acres | MLS #5094933 | \$889,000



MARY W. DAVIS REALTOR 802.228.8811

Charming Country Retreat in Ludlow Village

This move-in ready home is sun-filled with an updated kitchen, open floor plan, and cozy woodburning fireplace. Three levels with walk-out basement offer potential as a separate living area. Close to Okemo Mountain and all that Ludlow offers.

31 Plumley Avenue

4 BR, 3 BA | MLS #5086478 | \$769,000



Immaculate, Turnkey Village Home

This inviting home is just steps to the Okemo shuttle stop. It features 5 bedrooms and 2.5 baths, thoughtfully updated for comfortable year-round living. The renovated kitchen has soapstone countertops and a charming wood stove. Enjoy outdoor living on the sunny front porch with Okemo view or on the rear deck with hot tub.

51 High Street | 5 BR, 2.5 BA | .09 Acres | MLS#5077517 | \$729,000



Exceptional Multi-Family Property

This updated investment property has 3 units and is just 7.2 miles from Okemo Mountain. There are two 2-bedroom units and one 1-bedroom unit. All units are thoughtfully appointed and have in-unit washers and dryers.

77 Belmont Road, Mt Holly
5 BR, 3 BA | 0.75 Acre | MLS #5059701 | \$598,000

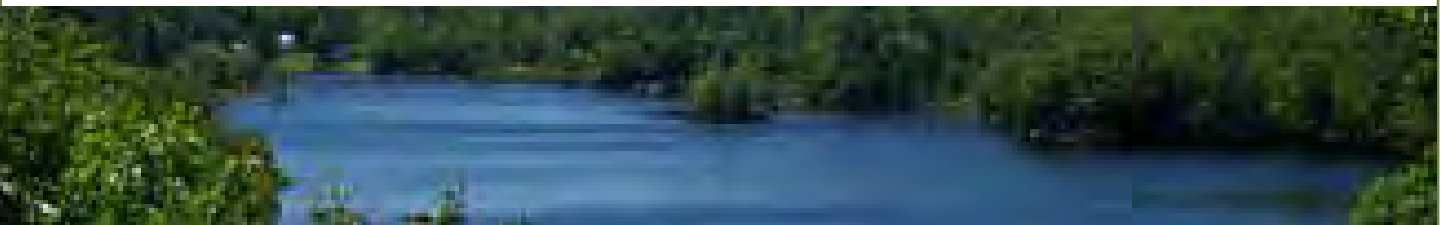


Enjoy Lake Living in this Updated Cape

This home provides an open living design with updated kitchen, baths and flooring. The private primary suite occupies the entire top floor. You will have shared beach access on Echo Lake. Entertain on your wrap-around deck overlooking a gentle stream.

106 Scott Terrace

2 BR + Family Room, 2 BA | 0.15 Acre | MLS #5095443 | \$595,000



Charming Reminder of Simpler Times

Nestled between Okemo Mountain and the lakes region, this inviting home sits on 2 acres. Enjoy the open living area, the spacious deck, and the beautiful backyard.

191 Route 100 No

5 BR, 1.5 BA | 2.0 Acres | MLS # 5090515 | \$455,000



Inviting Ranch in a Scenic Location

Situated on a beautifully landscaped, level two-acre lot, this home provides plenty of outdoor space to relax and enjoy outside living. Close to Star Lake and Belmont Village.

1529 Belmont Road

BR 3, 1 BA | 2.0 Acres | MLS #5090441 | \$399,900



Lake Rescue Retreat

Embrace the lakeside lifestyle in this quintessential Vermont cottage on Lake Rescue. Walk across the road to a beautiful shared dock. A fully approved 3-bedroom septic permit is already in place. Close to golf, Jackson Gore at Okemo and Ludlow village.

38 Northshore Drive

2 BR, 1BA | MLS #5088988 | \$395,000



Investment Opportunity

Commercially zoned, this property could be a multi-family, a home-based business or provide a live/work lifestyle. Currently configured as two apartments. There is also a large barn with a heated workshop and extensive storage space.

3668 VT Route 103 North, Chester

4 BR, 2.5 BA | MLS #5097620 | \$249,500

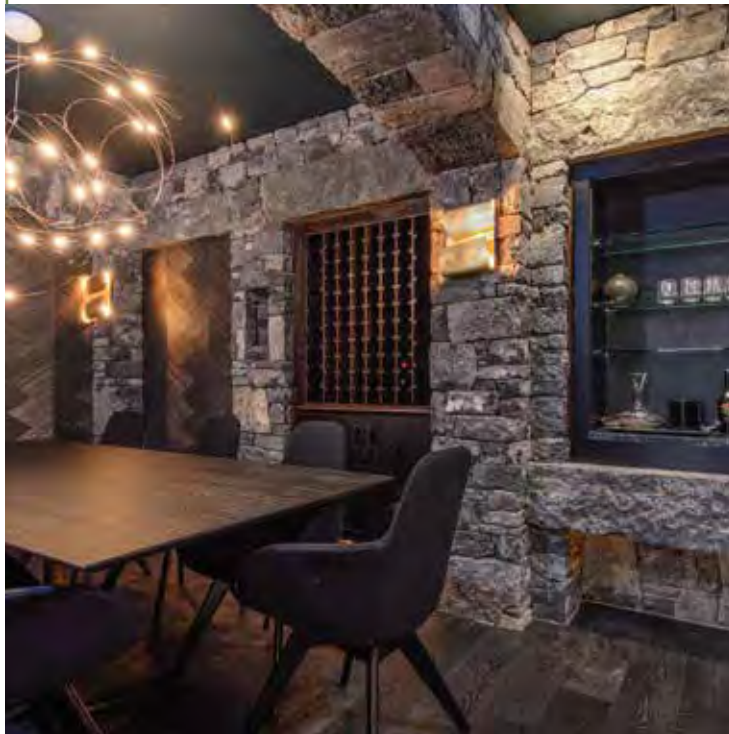
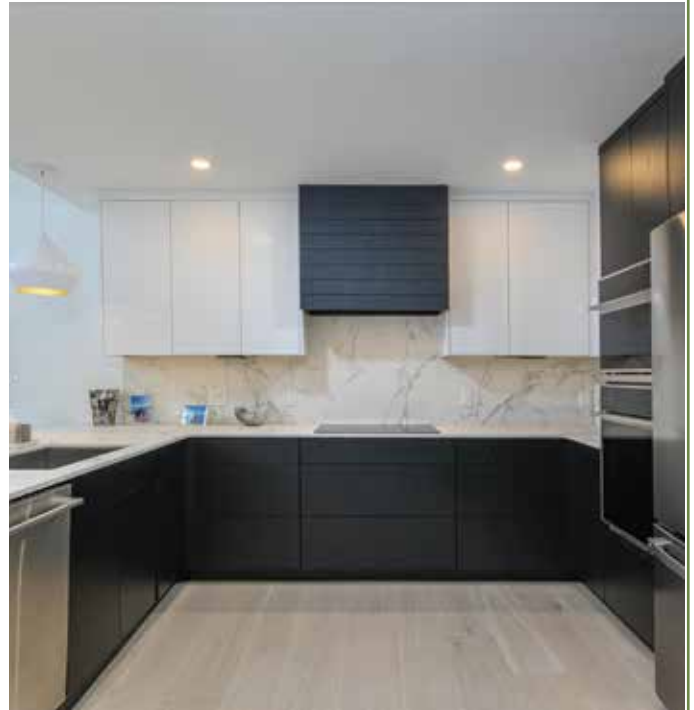


Spacious Luxury Slopeside Townhouse

Sitting just steps from the trail, this completely remodeled townhouse has 3 bedroom suites, an extraordinary wet-room in the primary bath and a custom wine room with a butler's kitchen. This is a show-stopper with every surface beautifully designed. Too much to mention here. Please come see in person.

Solitude Village D-1

5 BR, 5.5 BA | MLS #5070117 | \$2,950,000



Direct Slopeside Townhome with Great Views

Wonderful mountain location abuts Okemo State Forest. This 3-bedroom plus family room can function as a four-bedroom. Enjoy open living with a woodburning fireplace, an updated kitchen, updated windows and lighting, a new bath and laundry room.

Okemo Trailside 36E

3 BR, 3.5 BA | MLS #5081792 | \$1,200,000



Four-Bedroom Skier's Trifecta

Located in a slopeside village, offering panoramic views, this is a sunny end-unit. This townhome features many upgrades, including the kitchen, bathrooms, a new boiler and woodburning fireplace. Enjoy the hot tub on the deck and Okemo Trailside amenities.

Okemo Trailside 34E | 4 BR, 2.5 BA | MLS #5082284 | \$1,100,000



MARY W. DAVIS REALTOR 802.228.8811

Rare Private Location Overlooking a Mountain Stream

Sunny townhome just steps from the Sachem Trail. With an open floor plan, two wood-burning fireplaces, deck, sauna and updated kitchen, this is your perfect mountain spot.

Okemo Trailside 30C | 4 BR, 2.5 BA | MLS #5075179 | \$895,000



Luxury Amenities with Stunning Views

You will have true ski-in/ski-out access from this gorgeous two bedroom townhome. After skiing, enjoy the amenities at the SouthFace Village recreation center or cozy up in front of your gas fireplace. You will love this bright, sunny two-level home.

SouthFace Village TM-6 | 2 BR, 2.5 BA | MLS #5056767 | \$795,000



Recently Remodeled Four-Bedroom Townhome

This popular Sachem floor plan is light, bright and open. You will love the beautiful kitchen, the cathedral ceiling, and wraparound deck. Within the primary suite, there is a remodeled private bath. Come see how easy the living is here.

Okemo Trailside 48B | 4 BR, 2.5 BA | MLS#5081402 | \$749,000



Beautiful Townhome with Mountain Views

This unit is privately located bordering woodland with long distance mountain views.

Enjoy the custom kitchen, hardwood floors, woodburning fireplace, and the skylit whirlpool tub in the primary suite. The lower level includes a sauna.

Okemo Trailside 41C | 3 BR, 2 BA | MLS#5072260 | \$729,000



Slopeside Living at Its Best

You will love the true ski-in/ski-out access directly on Sidewinder, Pomenade and Rising Star trails. This beautiful open-concept condo has a woodburning fireplace, a maple kitchen, and a jetted tub in the primary suite. Watch skiers from the deck and step-out onto the snow to ski. Enjoy all the amenities of Solitude Village.

Solitude Village, N102 | 2 BR, 2.5 BA | MLS #5086846 | \$675,000



Largest Townhome at Hawk Resort

Enjoy hosting friends and family in this spacious end-unit townhome. The light-filled living room has a stone woodburning fireplace. Located between Okemo and Killington, and with access to Lake Amherst, you can enjoy year-round recreation.

Hawk Ledges, 5 | 4 BR, 3.5 BA | MLS #5076451 | \$539,000



Warm and Charming with Open Floor Plan

Nicely renovated open living, two-level condo near Sachem Trail.
Enjoy this ski season and have fun at the pool and tennis court next summer.

Okemo Trailside 23-C Upper

2 BR, 2 BA | MLS #4974778 | \$460,000



Recently Updated Okemo Trailside Condo

This large one-bedroom unit has easy access to the Sachem Trail. Recent updates include a new woodburning fireplace, new carpeting, and a renovated bathroom. The Tesla charging station offers extra convenience. Enjoy all the Okemo Trailside amenities.

Okemo Trailside, 23-BL | 1 BR, 1 BA | MLS #5094088 | \$395,000



Updated Condo with Direct Slope Access

Ski to your deck! This ground-floor condo has a remodeled kitchen, updated flooring throughout, recessed dimmable lights, and a programmable electric fireplace.

Okemo Mountain Lodge, B-103

1 BR, 1 BA | MLS #5098029 | \$375,000



Spacious One-Bedroom Close to Sachem Trail

This ski-in/ski-out condo offers flat, easy access to the slopes and community amenities.

Enjoy the renovated kitchen and close proximity to the pool and tennis courts.

Okemo Trailside, 22-CL

1 BR with Bunkroom, 1 BA | MLS #5057698 | \$375,000



Fabulous Ski-in/Ski-out Opportunity

This top-floor condo offers unbeatable convenience and views overlooking the Okemo Base Lodge and the A/B Quad Chairlifts. Close to everything, including Ludlow Village.

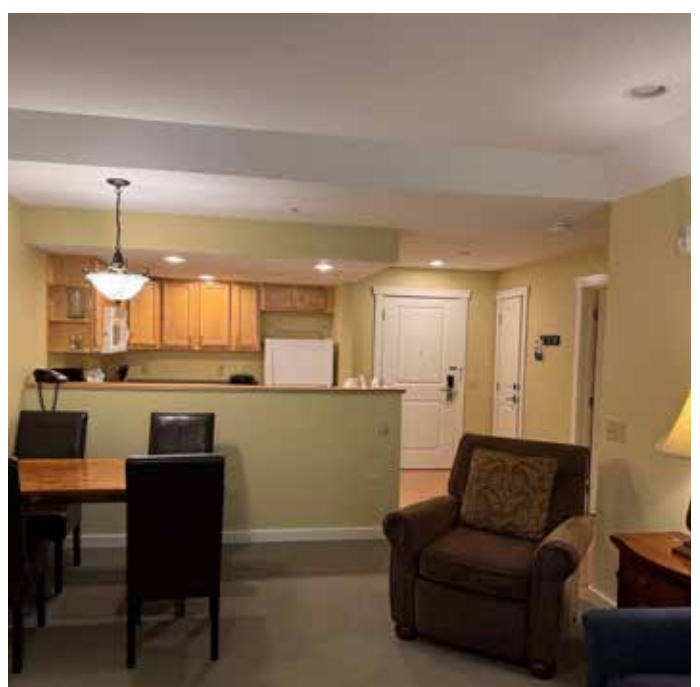
Okemo Mountain Lodge, B-303
1 BR, 1 BA | MLS #5075272 | \$319,000



Enjoy All the Amenities with this Condo

This condo has full ownership with a gas fireplace, restaurant, pool and gym facilities. It is only 3 miles to Okemo and Ludlow Village

The Pointe at Castle Hill, 158
1 BR, 1 BA | MLS #5072479 | \$199,000





Jackson Gore Village on Okemo

This property includes the Jackson Gore Inn, Adams and Bixby Houses. These units offer a wide variety of on-site amenities. You'll find charm and convenience of a Country Inn with the benefit of hotel services.

Unit #	Qtr.	Price	#BR	#BA	Sq. Ft.	MLS #	Unit Type
J#335/337	Qtr. IV	\$195,000	3 BR	3 BA	1670	5087239	G-Deck
A#705/707	Qtr. IV	\$169,999	3 BR	3 BA	1854	5015926	G-II
A#506/508	Qtr. II	\$100,000	2 BR	3 BA	1367	5097628	F-II
J#368/370	Qtr. IV	\$69,900	1 BR	2 BA	775	5087537	C
J#318/320	Qtr. I	\$69,000	1 BR	2 BA	775	5072201	C-Deck
J#448	Qtr. IV	\$65,000	1 BR	2 BA	775	5080637	B

Interested in a short-term rental? Contact our Inside Edge team.



RENTALS
INSIDE EDGE
 AT OKEMO

802-298-0087

www.insideedgerentals.com