




BANYAN TREE
RESIDENCES
WEST PALM BEACH

BANYANTREERESIDENCESWPB.COM



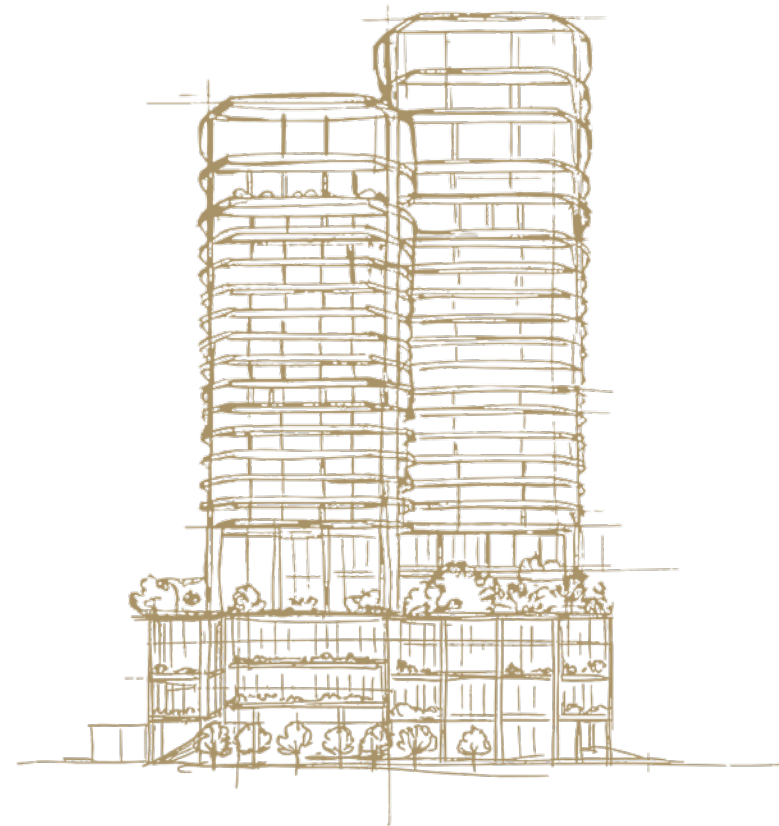
 ORAL REPRESENTATIONS CANNOT BE RELIED UPON AS CORRECTLY STATING THE REPRESENTATIONS OF THE DEVELOPER. FOR CORRECT REPRESENTATIONS, MAKE REFERENCE TO THE DOCUMENTS REQUIRED BY SECTION 718.503, FLORIDA STATUTES, TO BE FURNISHED BY A DEVELOPER TO A BUYER OR LESSEE. This is not intended to be an offer to sell, or solicitation to buy, condominium units to residents of any jurisdiction where prohibited by law, and your eligibility for purchase will depend upon your state of residency. This offering is made only by the prospectus for the condominium and no statement should be relied upon if not made in the prospectus. All images, renderings, depictions, and visual materials are artist's conceptual renderings provided for illustrative purposes only and are not intended to represent the exact final appearance of the development, any specific unit, or the surrounding areas. Any views described, including but not limited to water, city, skyline, or landscape views, are conceptual only and may not reflect the actual views available from any particular residence. Actual views from a unit will vary depending on, among other factors, the unit's location, floor level, orientation, final design, construction changes, future development, and existing or future obstructions (including other buildings, structures, vegetation, or infrastructure). No guarantee or representation is made that any particular view will be available from any residence. Mast Capital ("MAST") is not the project Developer. This Condominium is being developed by 400 Hibiscus Acquisitions, LLC, a Delaware limited liability company ("Developer"), which has a license to use the name and logos of MAST. Any and all statements, disclosures and/or representations shall be deemed made by Developer and not by MAST and any purchaser agrees to look solely to Developer (and not to MAST and/or any of its affiliates or principals) with respect to any and all matters relating to the marketing and/or development of the Condominium and with respect to the sales of units in the Condominium.

DEVELOPERS

Mast Capital & Curated JCZM Development

HOSPITALITY

Banyan Tree



ARCHITECTURE

OMA

INTERIORS

Yabu Pushelberg

LANDSCAPING

Enea Landscape Architecture

Banyan Tree Residences West Palm Beach blends a holistic philosophy of wellbeing, world-class architecture, and refined interiors with the prestige of a globally recognized luxury hospitality brand. The result is a private residential experience enhanced by global resort access and elevated service.

THE PROPERTY

Twenty-six-story landmark dual-form tower

Eighty-eight private residences

Exclusive, limited penthouse collection

Perfectly positioned in the heart of downtown West Palm Beach, moments from the Intracoastal Waterway

Porte-cochere for private arrival

Unmatched accessibility to the city's finest dining, cultural institutions, and boutique shopping

The true center of downtown West Palm Beach—surrounded by Worth Avenue, CityPlace, Royal Poinciana Plaza, and the Intracoastal Waterway

THE RESIDENCES

One- to four-bedroom corner residences with wraparound terraces and panoramic views from every exposure

Direct elevator entry in most residences

10' clear ceiling heights with floor-to-ceiling, impact-resistant glass that frame uninterrupted views

Yabu Pushelberg-designed kitchens, elegantly composed in natural stone, brushed metals, integrated lighting and fluted glass

Kitchens fully equipped with Sub-Zero and Wolf appliance suites, including integrated wine coolers

Primary bathrooms are appointed with Banyan Tree's signature rain shower, five-fixture layouts, spa-inspired detailing, and sculptural freestanding bathtubs

Prewired for motorized shades and smart home technology

SIGNATURE SERVICES

A dedicated twenty-four-hour host anchors the residential experience, supported by a team of service professionals positioned throughout the property to assist residents and coordinate every aspect of daily life with seamless efficiency.

Fully immersed in the service philosophy of Banyan Tree, the residential staff is extensively trained to deliver the same exceptional hospitality experienced across the brand's renowned properties worldwide—anticipating residents' needs with grace, discretion, and intuitive attention.

AMENITIES

Expansive suite of amenities inspired by Banyan Tree's global philosophy of sanctuary, restoration, and mindful living

Entire floor devoted to wellbeing, anchored by a full-service spa and an expansive reflection and meditation garden

Deluxe treatment room, rainforest showers, hammam, steam and sauna, soaking baths, cold plunge, cryotherapy, meditation dome, and ice fountain

Indoor and outdoor fitness pavilion

Fully-serviced signature pool and cabanas

Juice bar

Garden bar and lounge

Open-air cinema

Golf simulator / screening room

Rooftop amenity deck

Speakeasy

Meeting room

Children's discovery garden

Pet retreat

Outdoor putting green

Reflection lounge

BANYAN GROUP OWNERSHIP BENEFITS

Owners enjoy exclusive access to Banyan Group's global ecosystem through The Sanctuary Club, providing priority access to resorts, preferred rates, and bespoke experiences across more than 100 properties in over 20 countries — extending the West Palm Beach lifestyle seamlessly onto the world stage.

Preferred access to Banyan Group properties worldwide

Priority reservations

Early check-in and late check-out*

Potential room upgrades at participating resorts*

Dedicated global owner services support

**subject to availability*