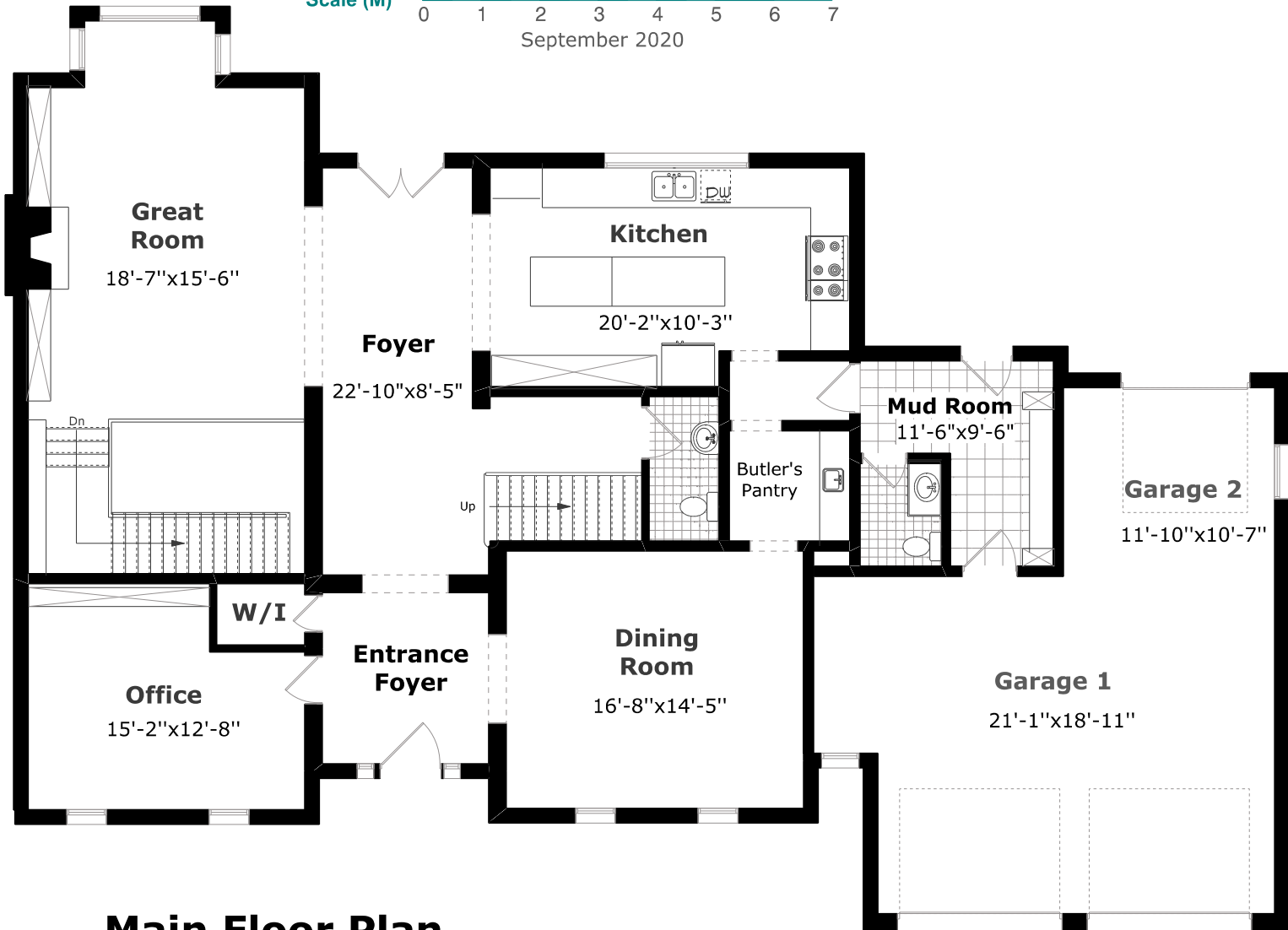
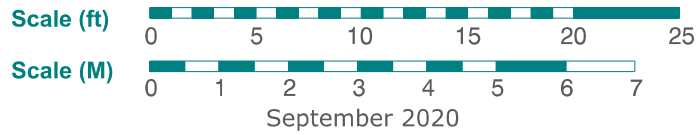


472 David Avenue



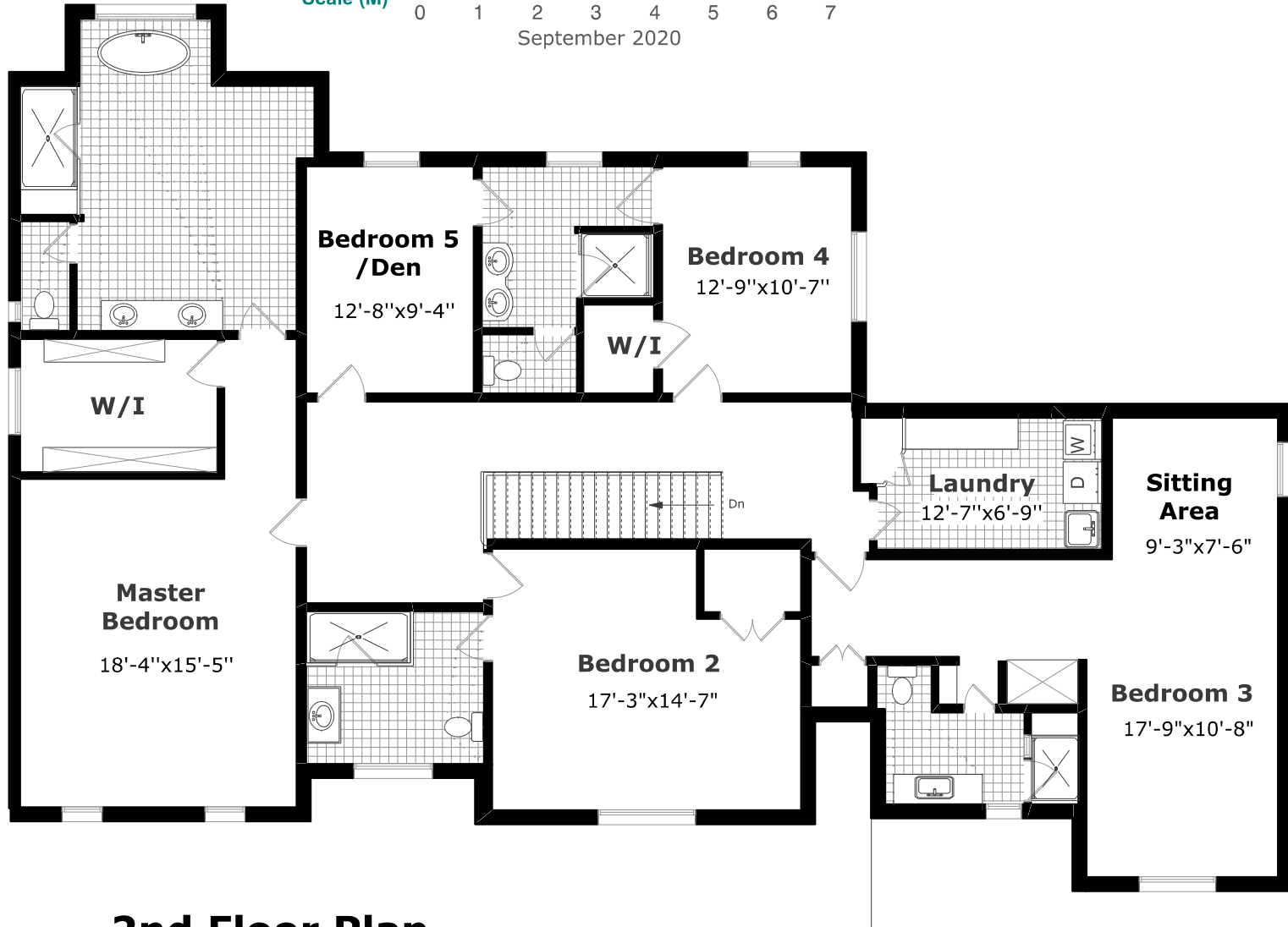
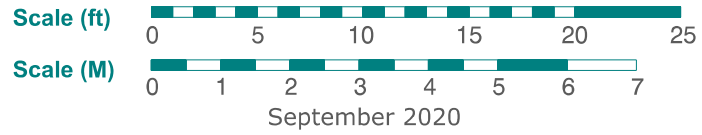
Main Floor Plan

1,988.2 sq. ft. +
665.4 sq. ft. (Garage)
10'-10" Ceilings



Measurements may not be 100% accurate. Floor Plans provided for illustrative purposes only. Room sizes not used to calculate area.

472 David Avenue



2nd Floor Plan

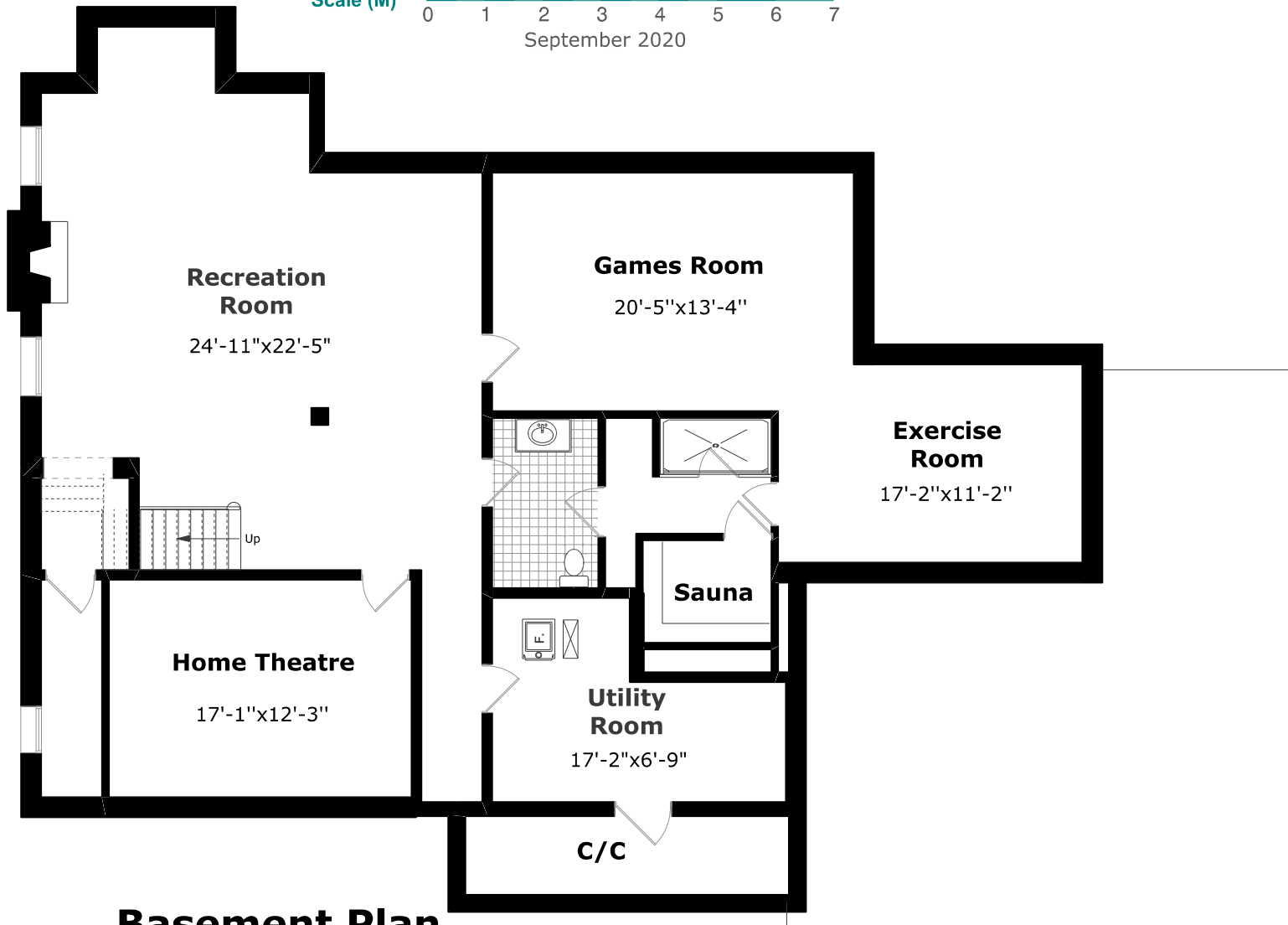
2,566.4 sq. ft.

9'-0" Ceilings



Measurements may not be 100% accurate. Floor Plans provided for illustrative purposes only. Room sizes not used to calculate area.

472 David Avenue



Basement Plan

2,166.9 sq. ft.



Measurements may not be 100% accurate. Floor Plans provided for illustrative purposes only. Room sizes not used to calculate area.