

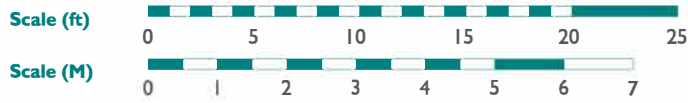
# 288 Gloucester Avenue



## Main Floor Plan

1,899.7 sq. ft.

9'-0" Ceiling

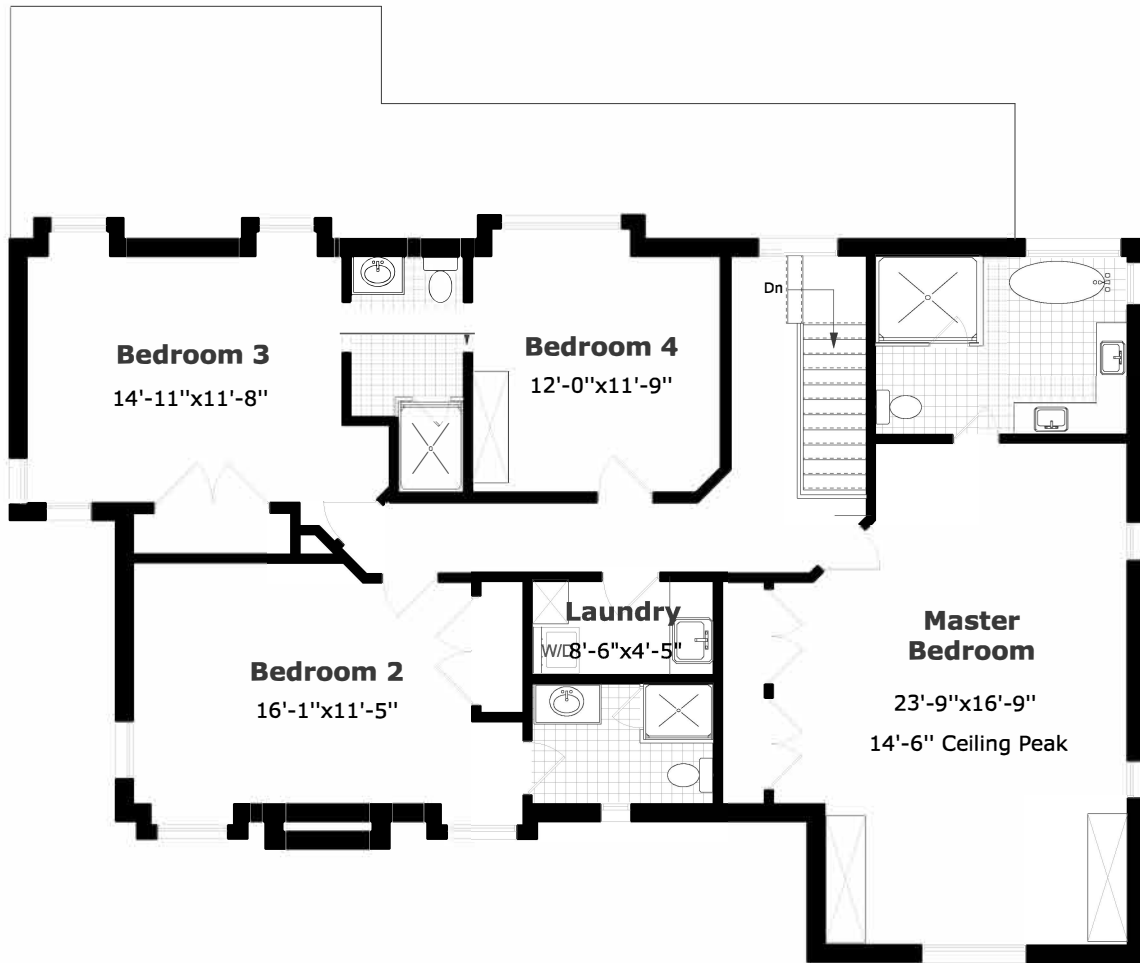


February 2020



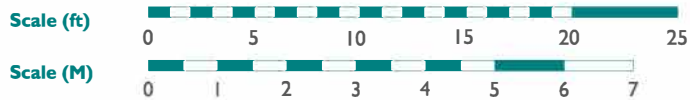
Measurements may not be 100% accurate. Floor Plans provided for illustrative purposes only. Room sizes not used to calculate area.

# 288 Gloucester Avenue



## 2nd Floor Plan

1,518.8 sq. ft.

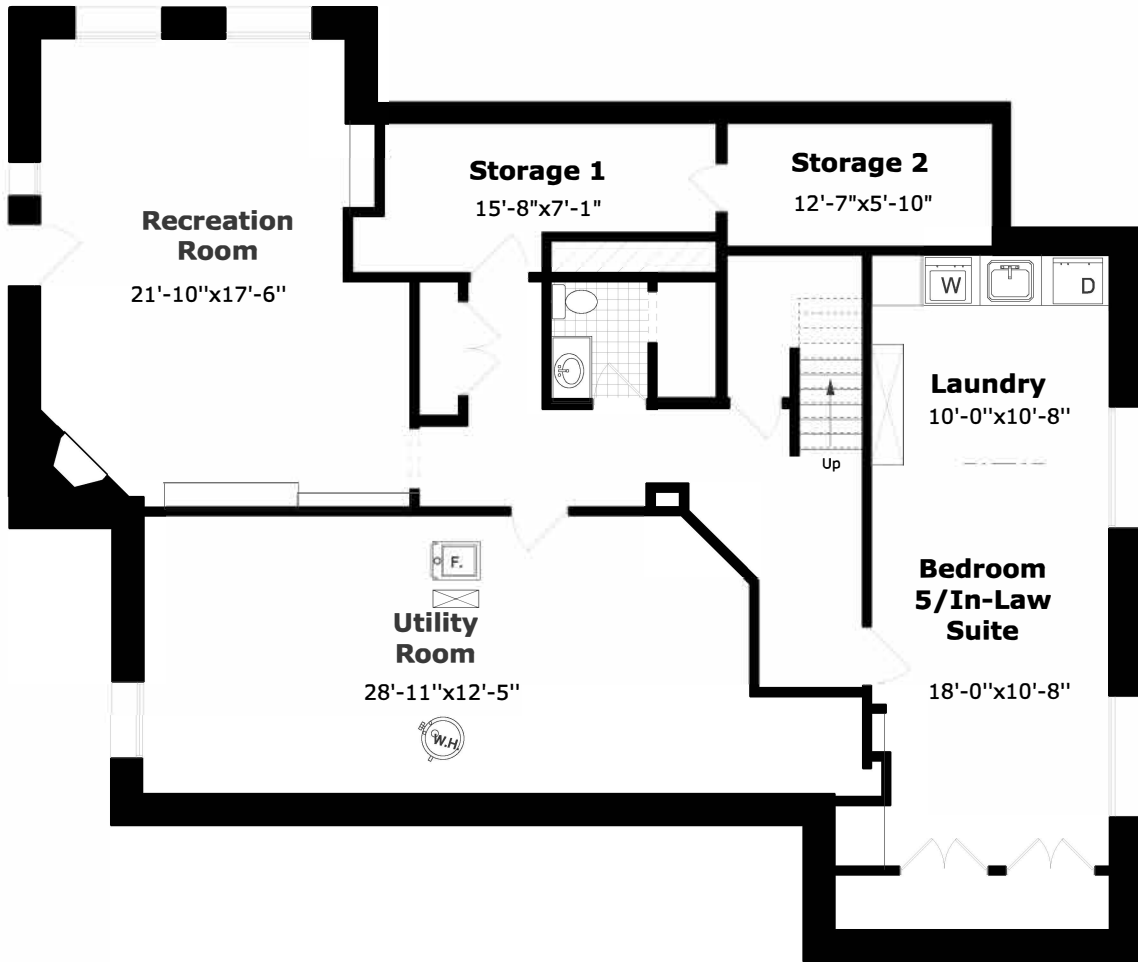


February 2020



Measurements may not be 100% accurate. Floor Plans provided for illustrative purposes only. Room sizes not used to calculate area.

# 288 Gloucester Avenue



## Basement Plan

1,899.7 sq. ft.

Scale (ft)



Scale (M)

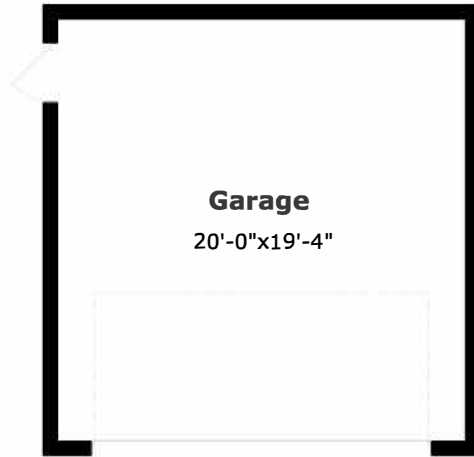


February 2020



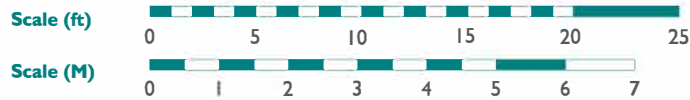
Measurements may not be 100% accurate. Floor Plans provided for illustrative purposes only. Room sizes not used to calculate area.

# 288 Gloucester Avenue



## Garage Floor Plan

440.9 sq. ft.



February 2020



Measurements may not be 100% accurate. Floor Plans provided for illustrative purposes only. Room sizes not used to calculate area.