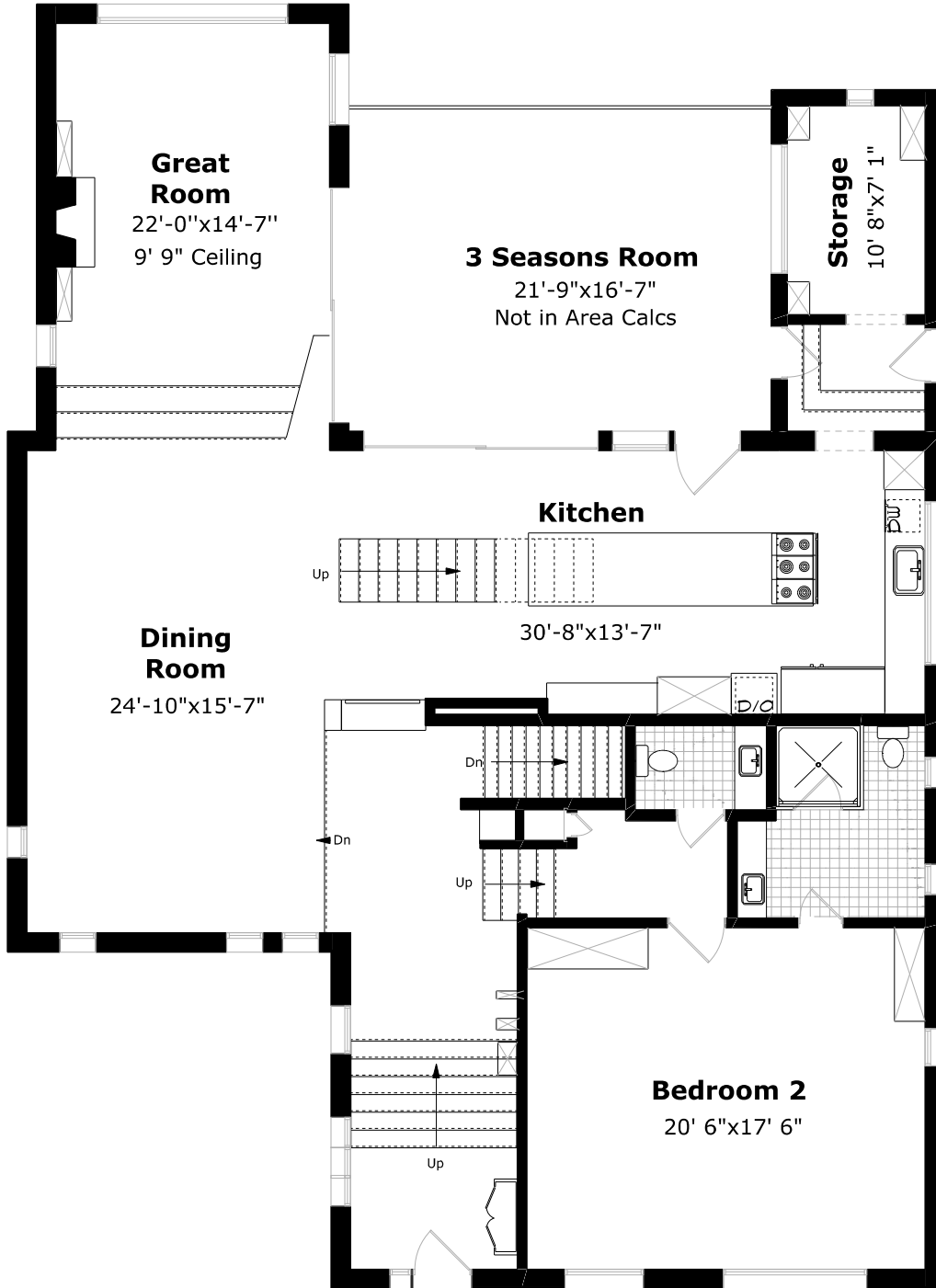


# 483 Bob-O-Link Road



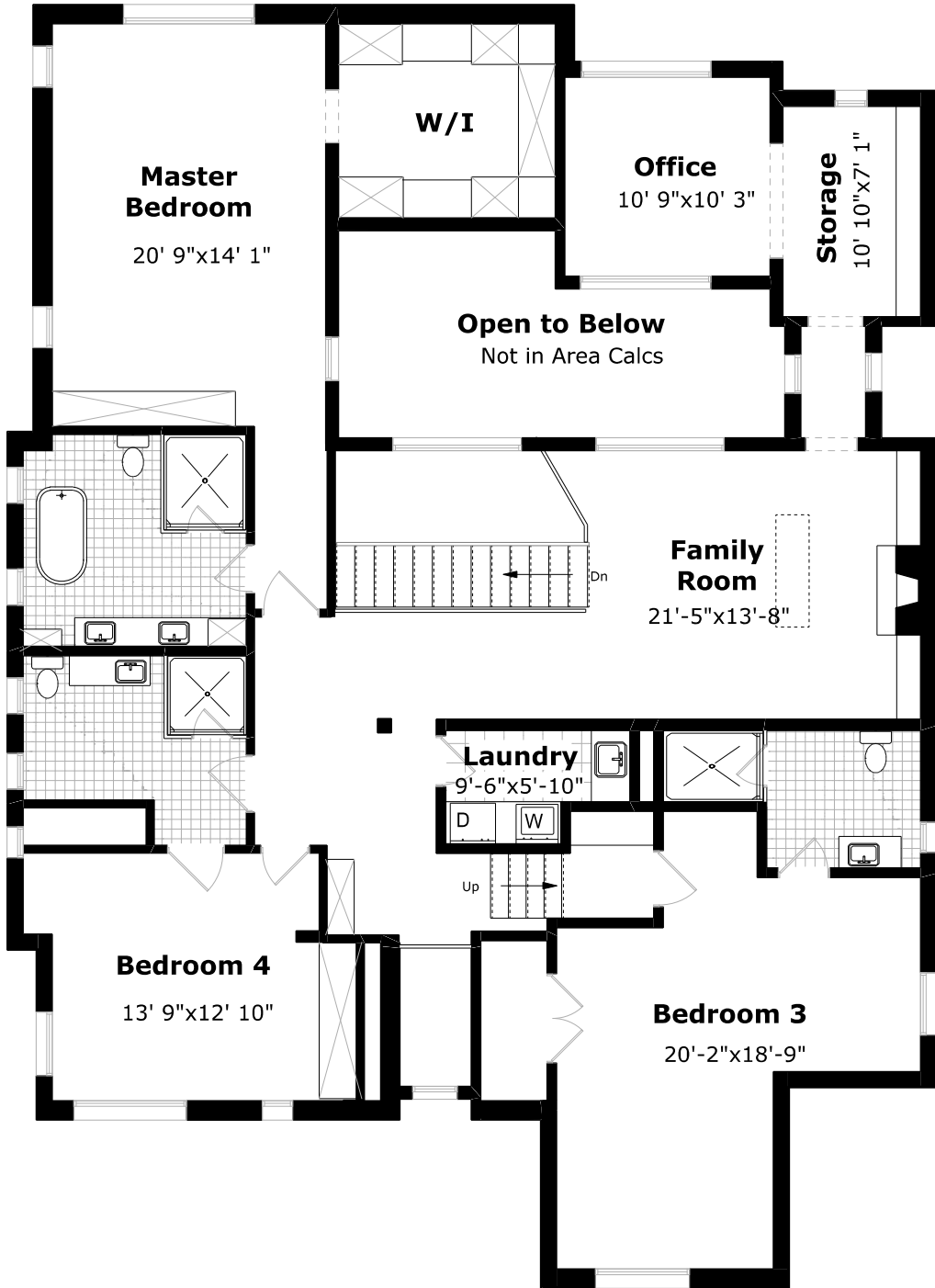
## Main Floor Plan

2,362.5 sq. ft.



Measurements may not be 100% accurate. Floor Plans provided for illustrative purposes only. Room sizes not used to calculate area.

# 483 Bob-O-Link Road



## 2nd Floor Plan

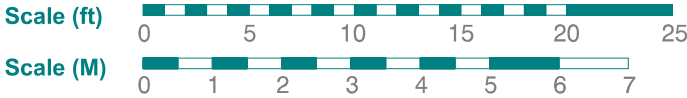
2,530.7 sq. ft.

8' 4" Ceiling

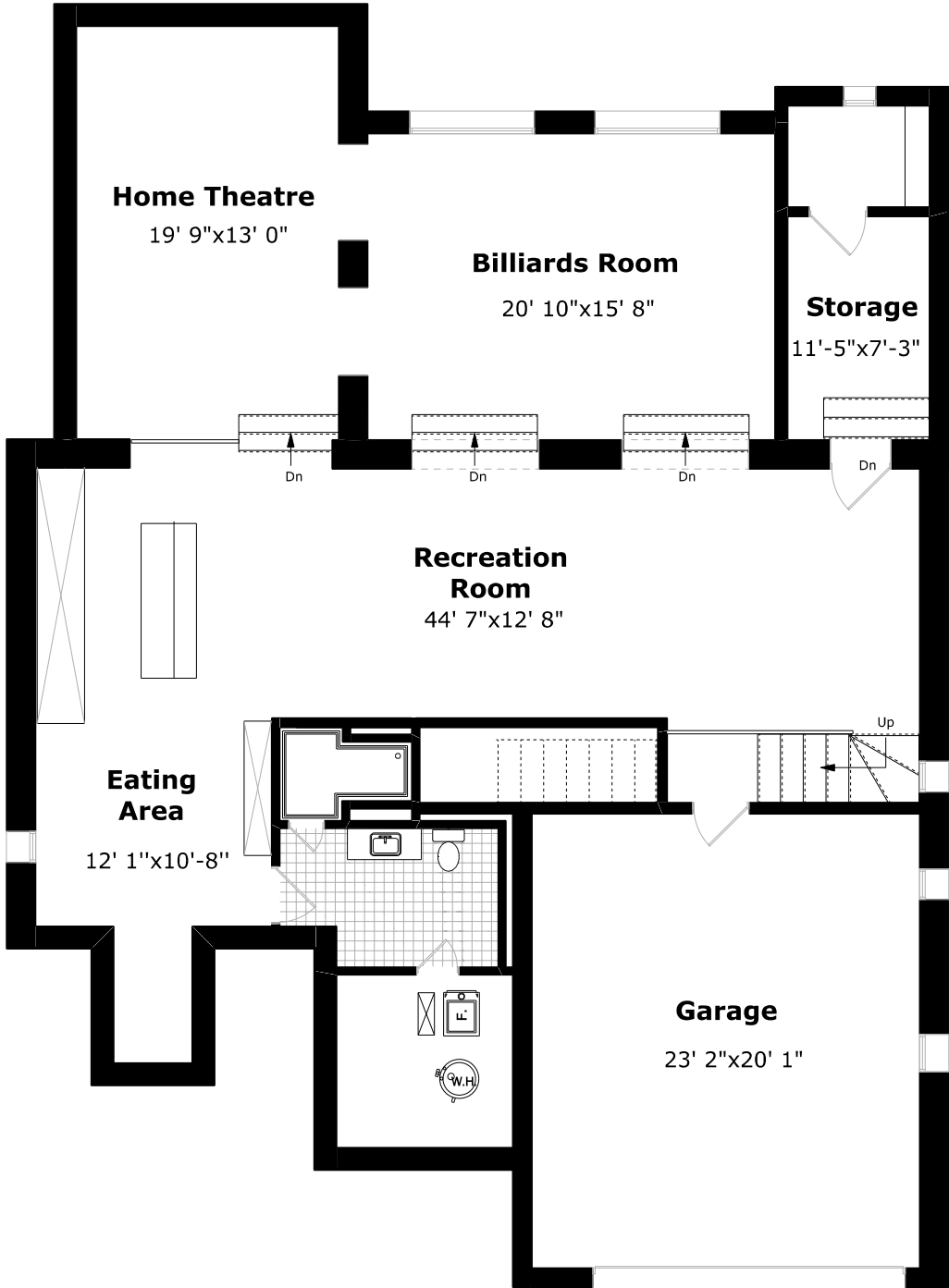


Measurements may not be 100% accurate. Floor Plans provided for illustrative purposes only. Room sizes not used to calculate area.

# 483 Bob-O-Link Road



November 2020



## Basement Plan

2,152.6 sq. ft. +  
523.3 sq. ft. (Garage)



Measurements may not be 100% accurate. Floor Plans provided for illustrative purposes only. Room sizes not used to calculate area.