

# Floor Plans: 1952 Edenvale Crescent

Approx.: 2,228 sq. ft. above grade

Approx.: 2,973 sq. ft. including lower level

# AB&A

AMY BRAY & ASSOCIATES



## AMY BRAY & ASSOCIATES

Amy Bray | Sales Representative, Sr. Vice President - Sales

Alexandria Wood | Sales Representative

c 416.802.5017

t 905.845.0024

amybrayassociates@sothebysrealty.ca

[amybrayandassociates.ca](http://amybrayandassociates.ca)

**Sotheby's** | Canada  
INTERNATIONAL REALTY

For additional information,  
visit [amybrayandassociates.ca](http://amybrayandassociates.ca)

# Floor Plans: 1952 Edenvale Crescent

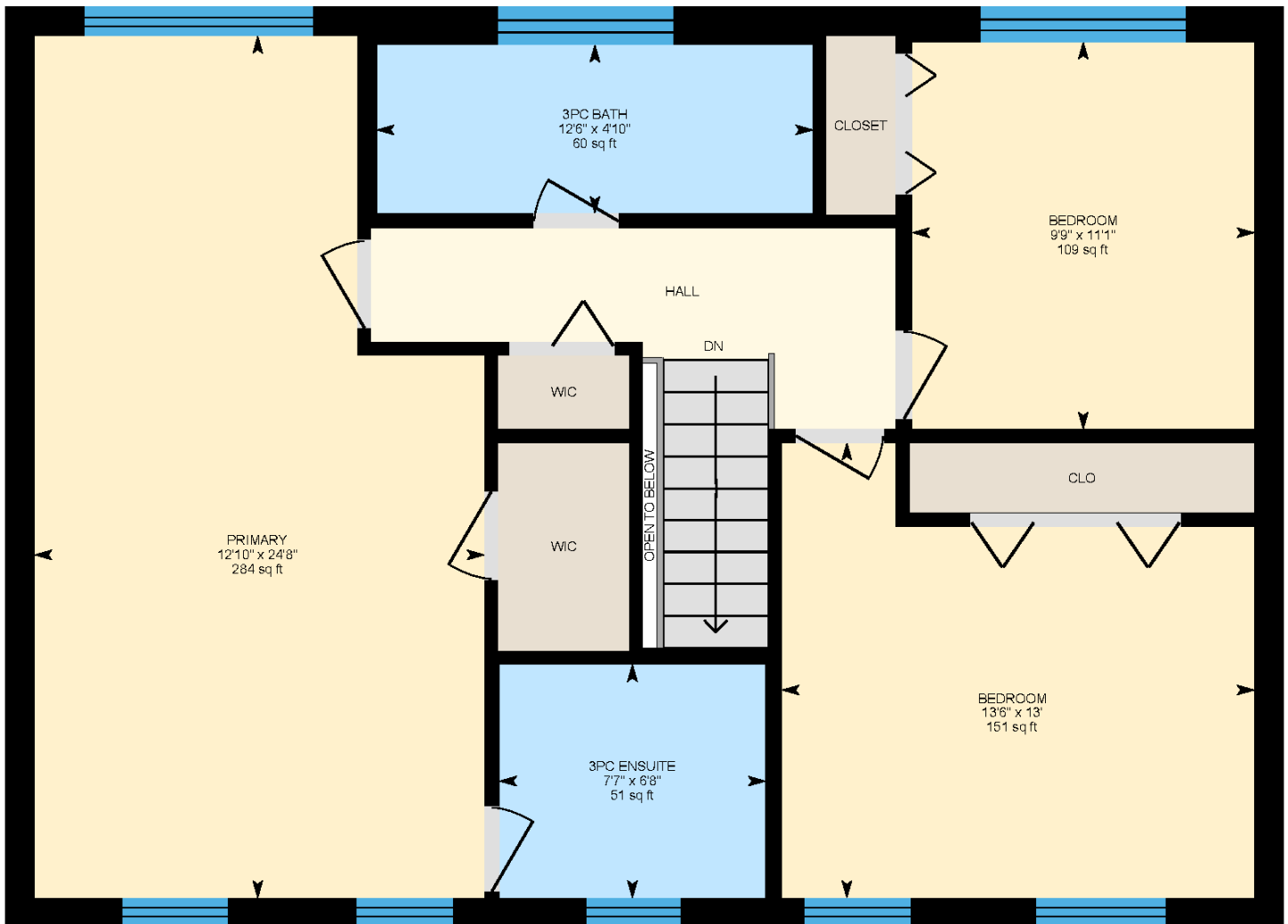
Approx.: 2,228 sq. ft. above grade

Approx.: 2,973 sq. ft. including lower level

# AB&A

AMY BRAY & ASSOCIATES

Second Level Approximately.: 852 sq. ft



## AMY BRAY & ASSOCIATES

Amy Bray | Sales Representative, Sr. Vice President - Sales

Alexandria Wood | Sales Representative

c 416.802.5017

t 905.845.0024

amybrayassociates@sothebysrealty.ca

[amybrayandassociates.ca](http://amybrayandassociates.ca)

**Sotheby's** | Canada  
INTERNATIONAL REALTY

For additional information,  
visit [amybrayandassociates.ca](http://amybrayandassociates.ca)

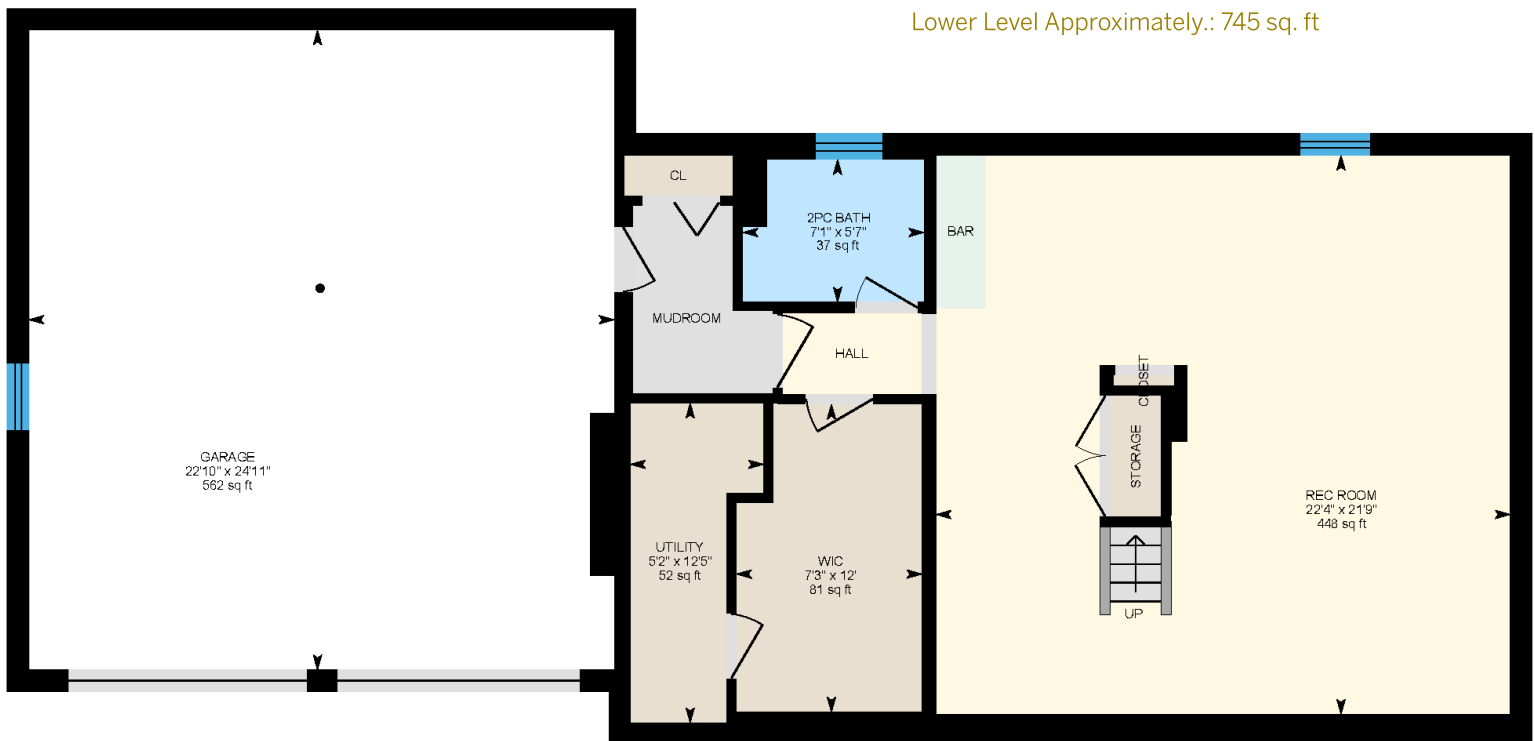
# Floor Plans: 1952 Edenvale Crescent

Approx.: 2,228 sq. ft. above grade

Approx.: 2,973 sq. ft. including lower level

# AB&A

AMY BRAY & ASSOCIATES



## AMY BRAY & ASSOCIATES

Amy Bray | Sales Representative, Sr. Vice President - Sales

Alexandria Wood | Sales Representative

c 416.802.5017

t 905.845.0024

amybrayassociates@sothebysrealty.ca

[amybrayandassociates.ca](http://amybrayandassociates.ca)

**Sotheby's** | Canada  
INTERNATIONAL REALTY

For additional information,  
visit [amybrayandassociates.ca](http://amybrayandassociates.ca)