

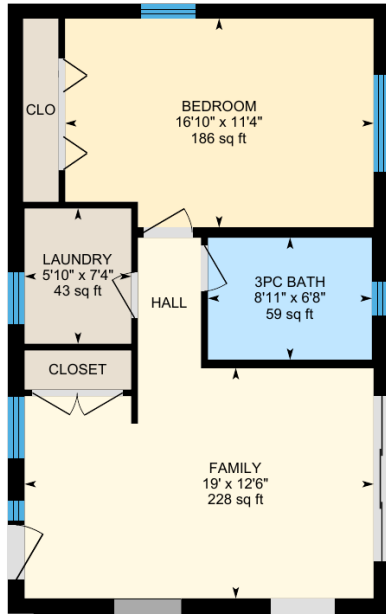
Floor Plans: 4085 Victoria Road South

Approx.: 2,812 sq. ft. above grade (MPAC)
Approx.: 4,012 sq. ft. including lower level (MPAC)

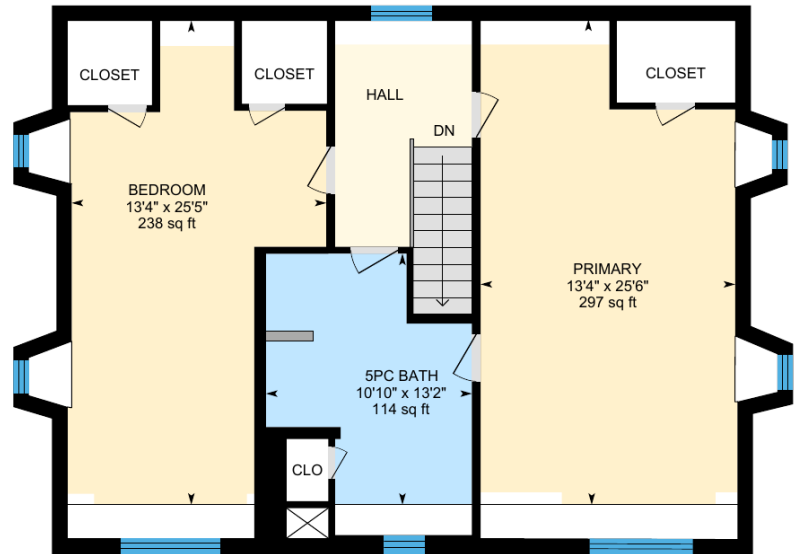
AB&A

AMY BRAY & ASSOCIATES

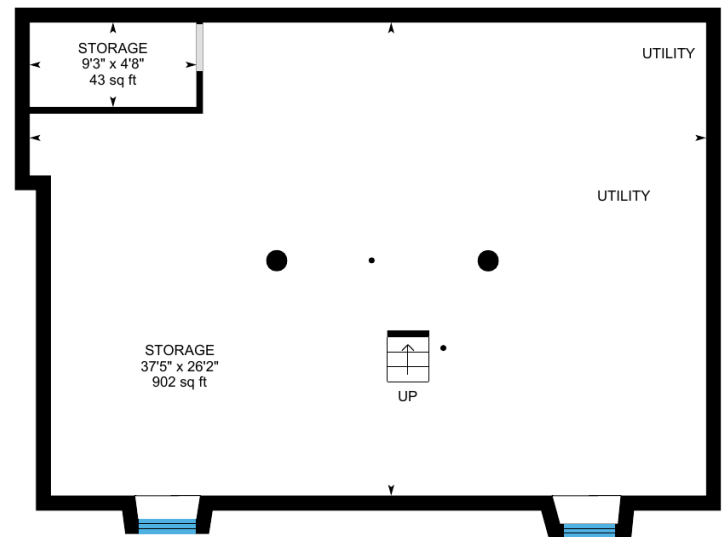
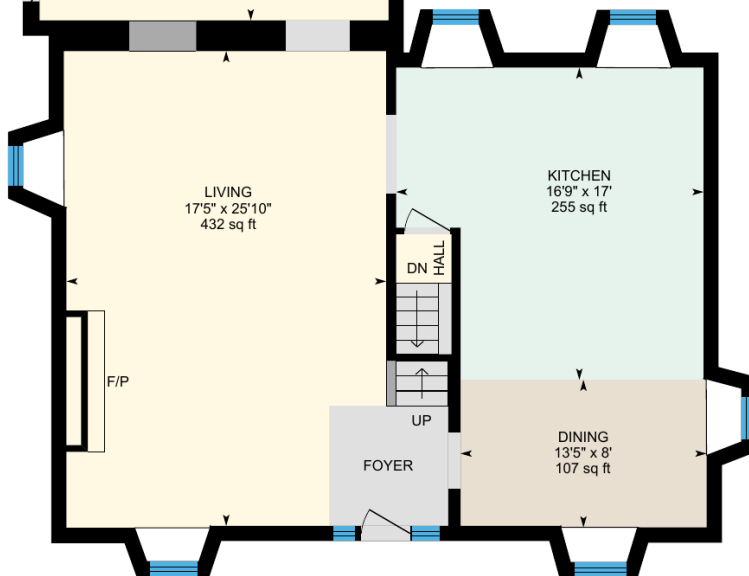
Approx.: 1,200 sq. ft



Approx.: 1,612 sq. ft



Approx.: 1,200 sq. ft



AMY BRAY & ASSOCIATES

Amy Bray | Sales Representative, Sr. Vice President - Sales
Alexandria Wood | Sales Representative

c 416.802.5017
t 905.845.0024
amybrayassociates@sothebysrealty.ca
amybrayandassociates.ca

Sotheby's | Canada
INTERNATIONAL REALTY

For additional information,
visit amybrayandassociates.ca