

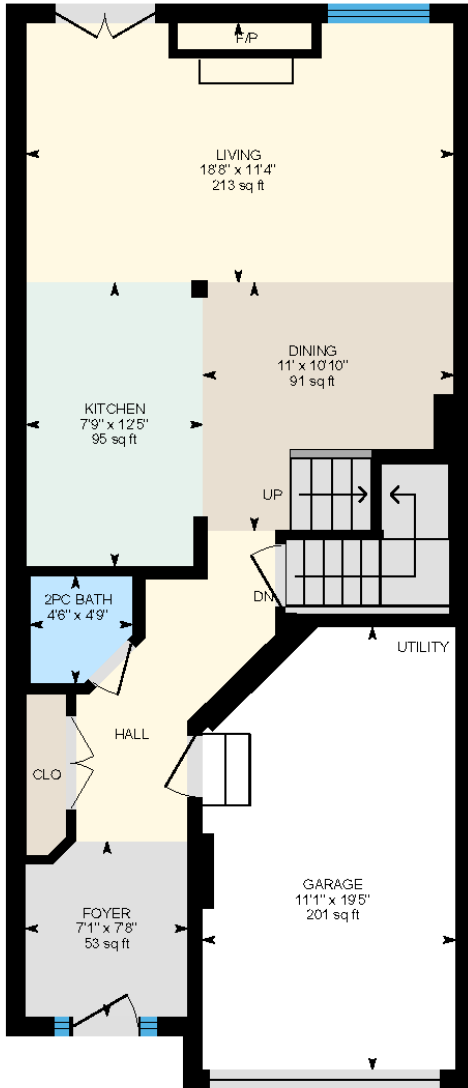
# Floor Plans: 2238 Stone Glen Crescent

Approx.: 1405 sq. ft. above grade

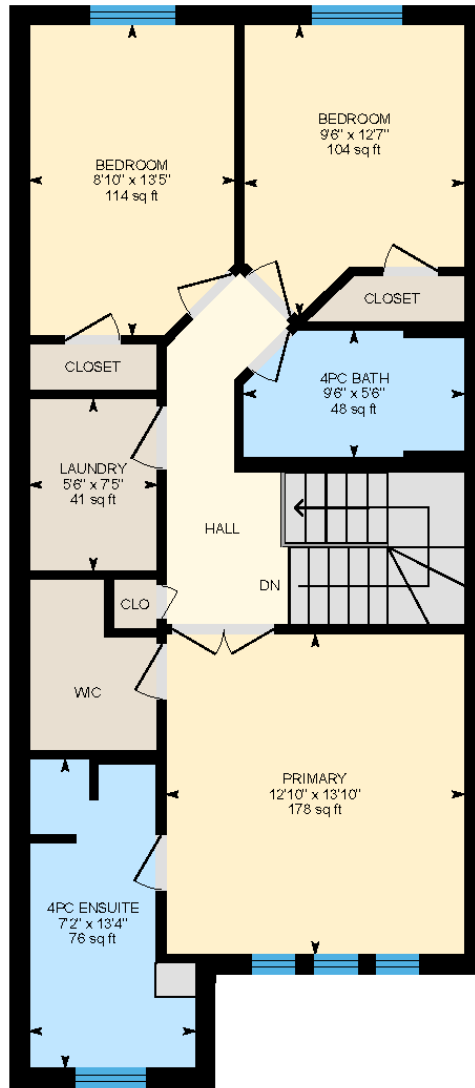
Approx.: 1986 sq. ft. including lower level

# AB&A

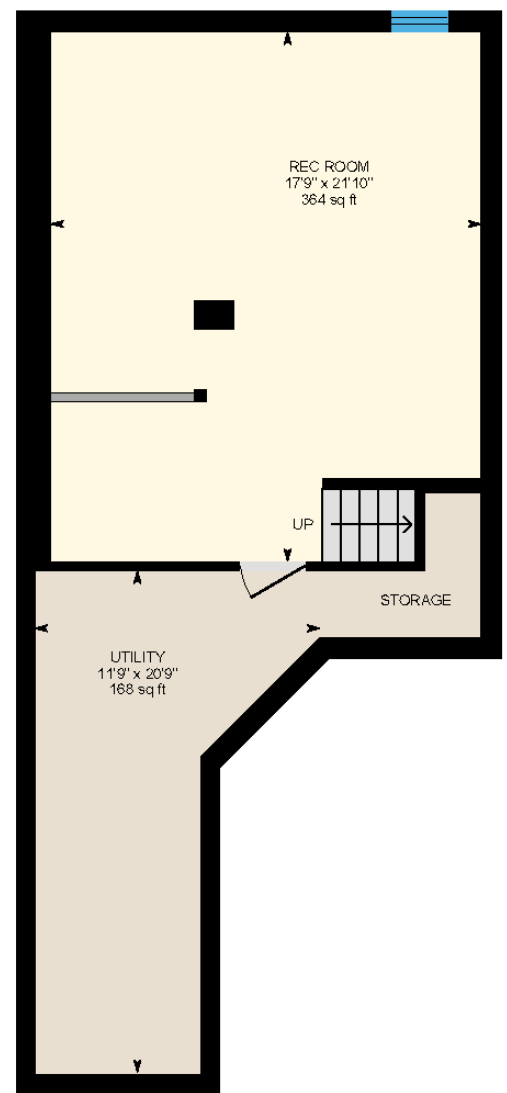
AMY BRAY & ASSOCIATES



Main Level: 617 sq. ft.



Second Level: 788 sq. ft.



Lower Level: 582 sq. ft.



## AMY BRAY & ASSOCIATES

Amy Bray | Sales Representative, Sr. Vice President - Sales  
 Alexandria Wood | Sales Representative

c 416.802.5017  
 t 905.845.0024  
 amybrayassociates@sothebysrealty.ca  
[amybrayandassociates.ca](http://amybrayandassociates.ca)

**Sotheby's** | Canada  
 INTERNATIONAL REALTY

For additional information,  
 visit [amybrayandassociates.ca](http://amybrayandassociates.ca)