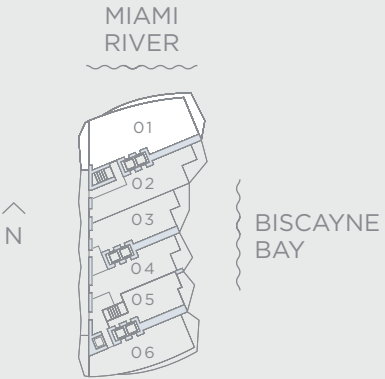
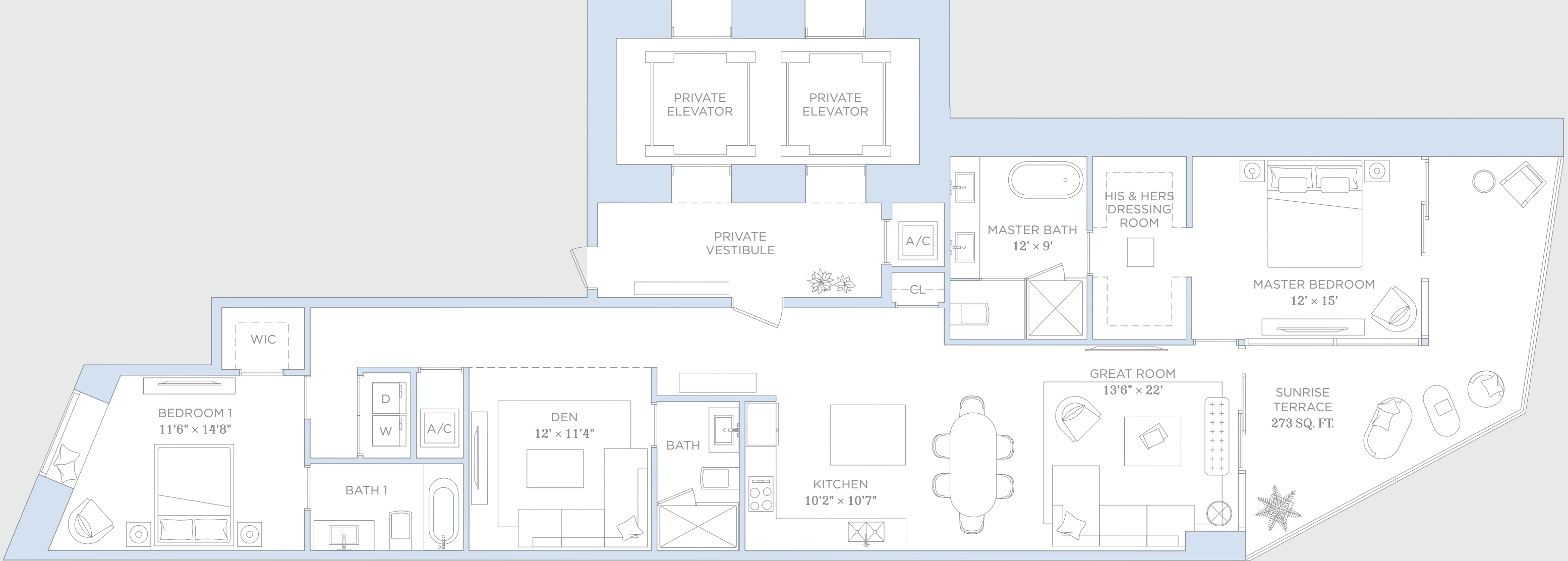


RESIDENCE 01

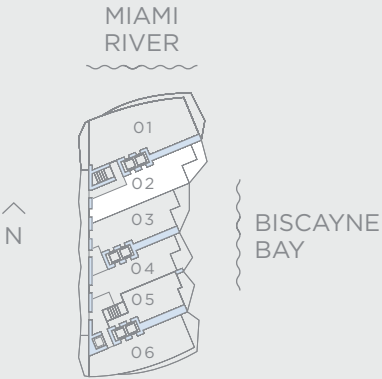
4 BEDROOMS    4.5 BATHROOMS		
A/C INTERIOR AREA:	3,029 SQ. FT.	281.40 SQ. M.
TERRACE AREA:	625 SQ. FT.	58.06 SQ. M.
TOTAL RESIDENCE:	3,654 SQ. FT.	339.46 SQ. M.

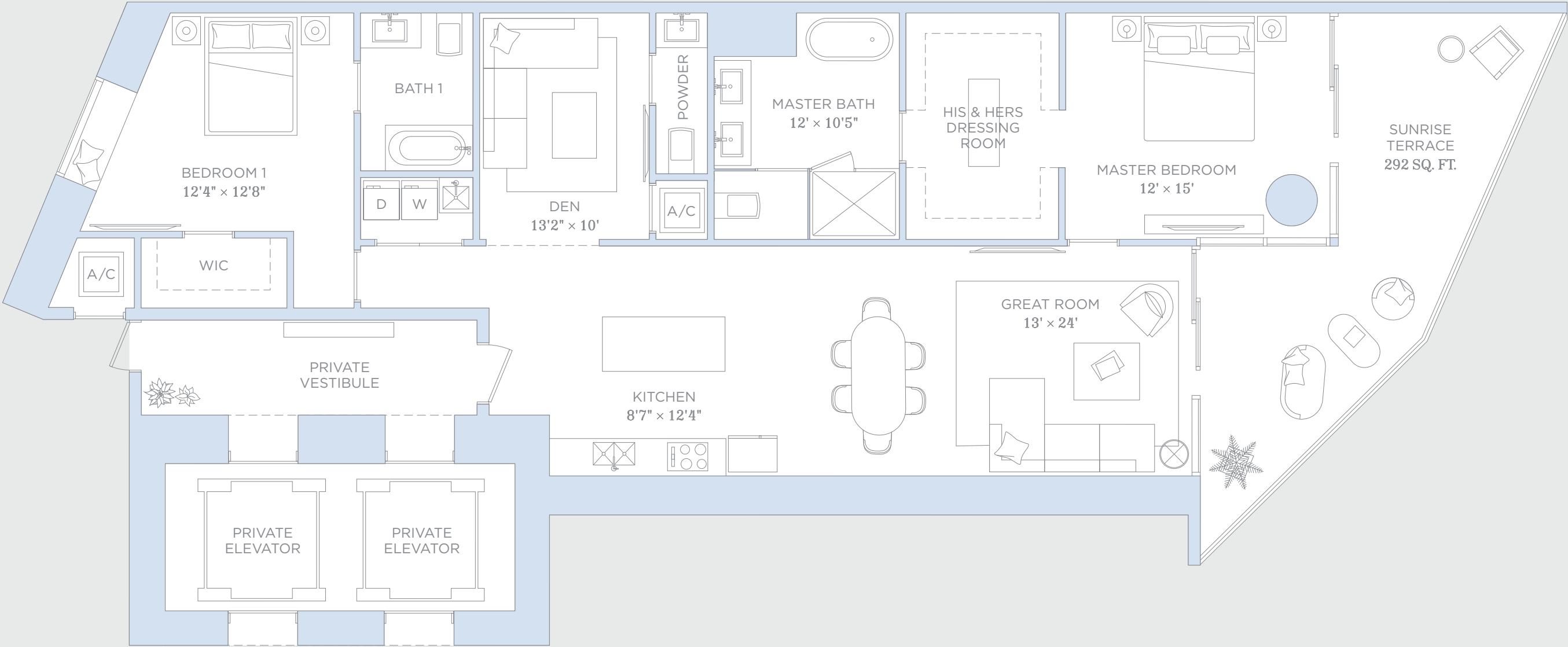




RESIDENCE 02

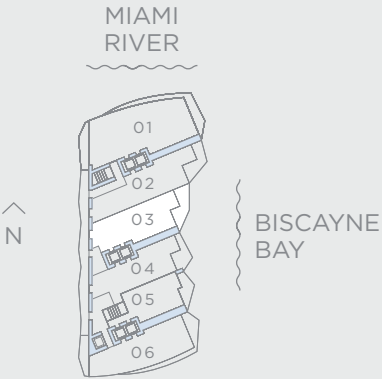
2 BEDROOMS    3 BATHROOMS & DEN		
A/C INTERIOR AREA:	1,916 SQ. FT.	178 SQ. M.
TERRACE AREA:	273 SQ. FT.	25.36 SQ. M.
TOTAL RESIDENCE:	2,189 SQ. FT.	203.36 SQ. M.

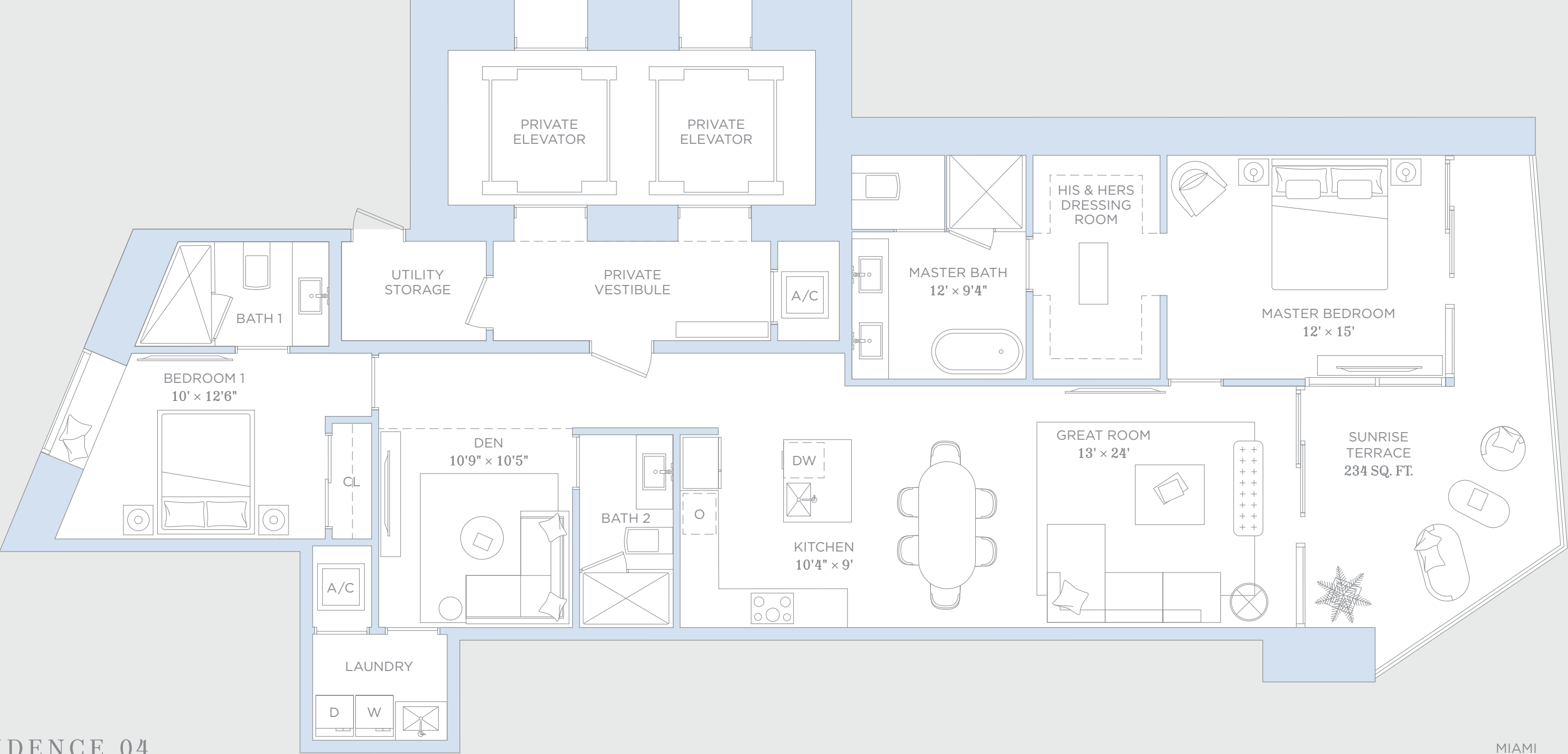




RESIDENCE 03

2 BEDROOMS    2.5 BATHROOMS & DEN		
A/C INTERIOR AREA:	1,865 SQ. FT.	173.26 SQ. M.
TERRACE AREA:	292 SQ. FT.	27.13 SQ. M.
TOTAL RESIDENCE:	2,157 SQ. FT.	200.39 SQ. M.

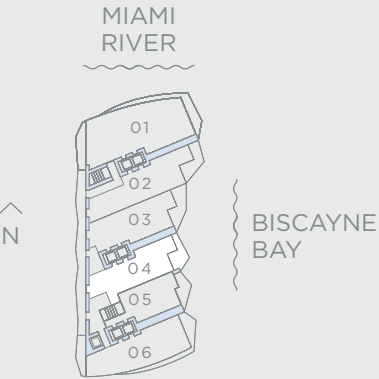


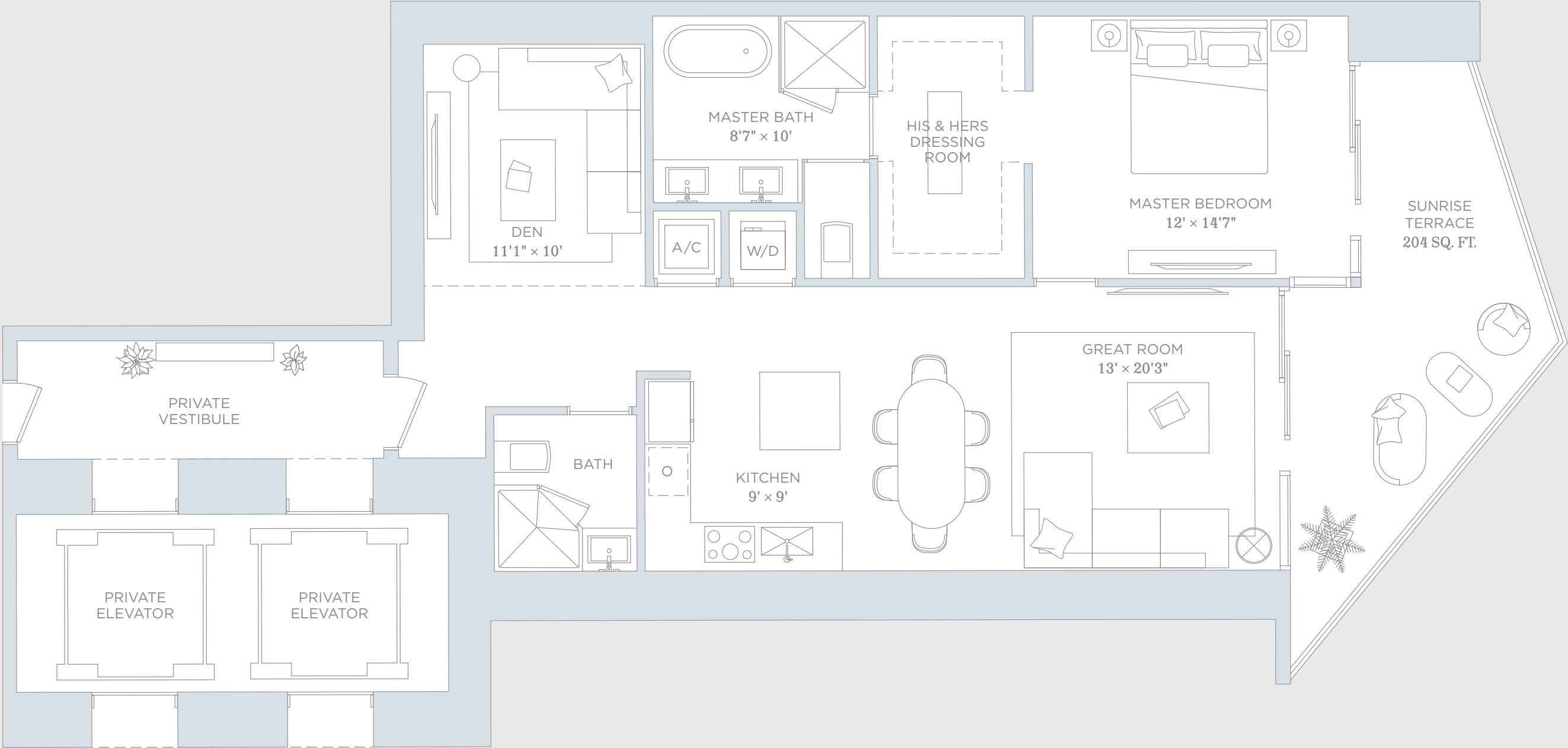


RESIDENCE 04

2 BEDROOMS    3 BATHROOMS & DEN

A/C INTERIOR AREA:	1,784 SQ. FT.	165.74 SQ. M.
TERRACE AREA:	234 SQ. FT.	21.74 SQ. M.
TOTAL RESIDENCE:	2,018 SQ. FT.	187.48 SQ. M.

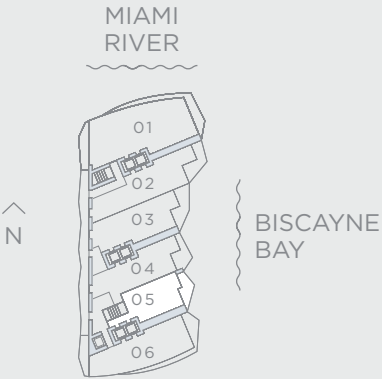


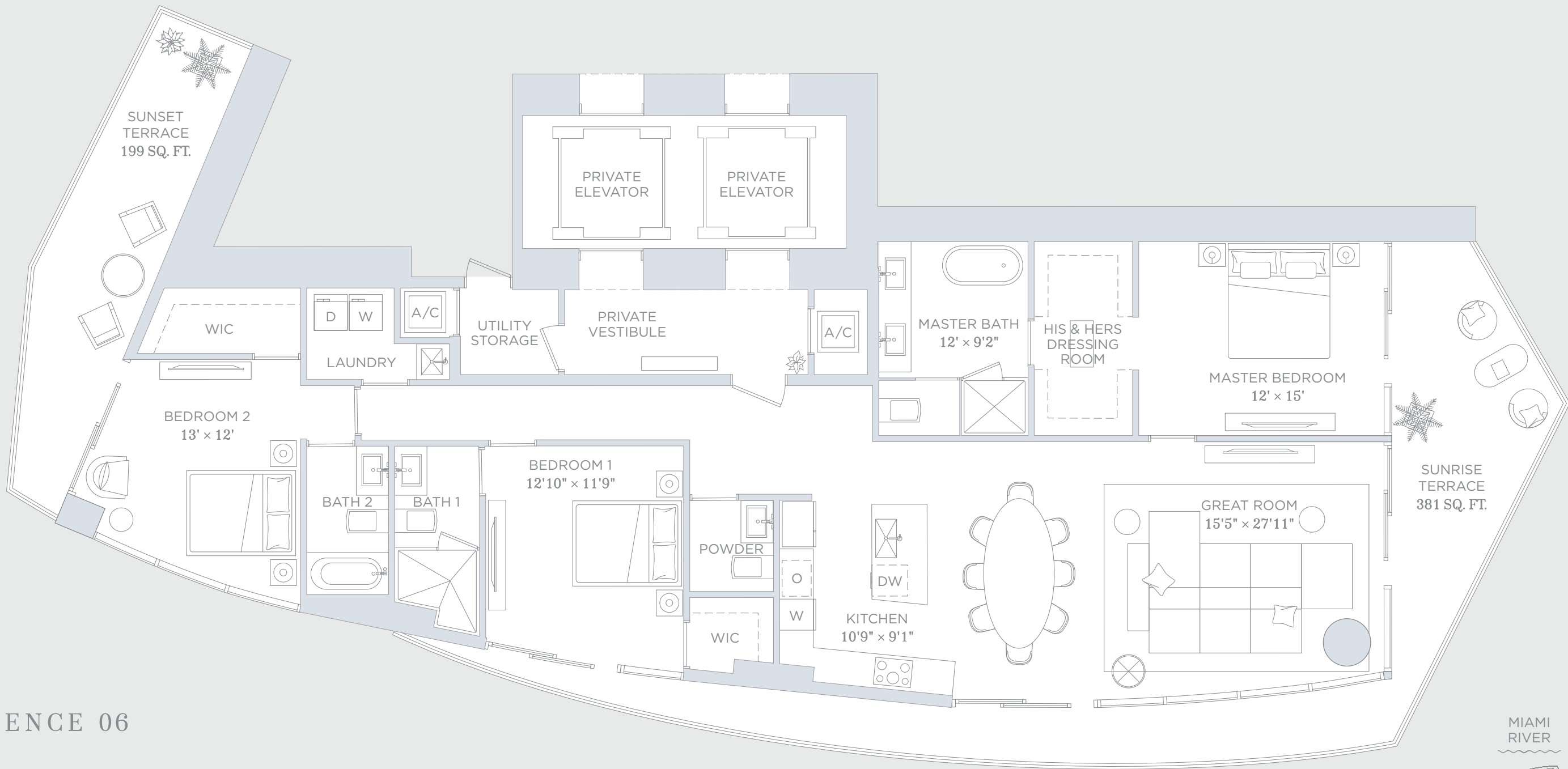


RESIDENCE 05

1 BEDROOMS    2 BATHROOMS & DEN

A/C INTERIOR AREA:	1,336 SQ. FT.	124.12 SQ. M.
TERRACE AREA:	204 SQ. FT.	18.95 SQ. M.
TOTAL RESIDENCE:	1,540 SQ. FT.	143.07 SQ. M.

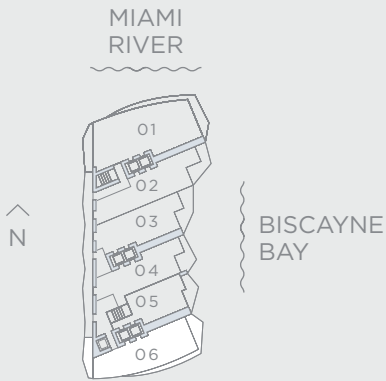




RESIDENCE 06

3 BEDROOMS    3.5 BATHROOMS

A/C INTERIOR AREA:	2,082 SQ. FT.	193.42 SQ. M.
TERRACE AREA:	580 SQ. FT.	53.88 SQ. M.
TOTAL RESIDENCE:	2,662 SQ. FT.	247.30 SQ. M.

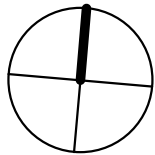




# ARQUITECTONICA

2900 Oak Avenue Miami, Florida 33133  
305.372.1812 TEL 305.372.1175 FAX  
www.arquitectonica.com

ALL DESIGNS INDICATED IN THESE DRAWINGS ARE PROPERTY OF ARQUITECTONICA INTERNATIONAL CORP. NO COPIES, TRANSMISSIONS, REPRODUCTIONS OR ELECTRONIC MANIPULATION OF ANY PORTION OF THESE DRAWINGS IN THE WHOLE OR IN PART ARE TO BE MADE WITHOUT THE EXPRESS WRITTEN AUTHORIZATION OF ARQUITECTONICA INTERNATIONAL CORP. DESIGN INTENT SHOWN IS SUBJECT TO REVIEW AND APPROVAL OF ALL APPLICABLE LOCAL AND GOVERNMENTAL AUTHORITIES HAVING JURISDICTION. ALL COPYRIGHTS RESERVED © 2019. THE DATA INCLUDED IN THIS STUDY IS CONCEPTUAL IN NATURE AND WILL CONTINUE TO BE MODIFIED THROUGHOUT THE COURSE OF THE PROJECTS DEVELOPMENT WITH THE EVENTUAL INTEGRATION OF STRUCTURAL, MEP AND LIFE SAFETY SYSTEMS. AS THESE ARE FURTHER REFINED, THE NUMBERS WILL BE ADJUSTED ACCORDINGLY.



## 444 BRICKELL ONE

77/99 SE 5th Street  
Miami, FL 33131

COMBO - UNITS 02/03

SCALE: 1/8" = 1'-0"

DATE:

7/14/2021  
10:04:01 AM

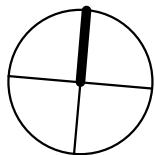
## COMBO UNIT 1



# ARQUITECTONICA

2900 Oak Avenue Miami, Florida 33133  
305.372.1812 TEL 305.372.1175 FAX  
www.arquitectonica.com

ALL DESIGNS INDICATED IN THESE DRAWINGS ARE PROPERTY OF ARQUITECTONICA INTERNATIONAL CORP. NO COPIES, TRANSMISSIONS, REPRODUCTIONS OR ELECTRONIC MANIPULATION OF ANY PORTION OF THESE DRAWINGS IN THE WHOLE OR IN PART ARE TO BE MADE WITHOUT THE EXPRESS WRITTEN AUTHORIZATION OF ARQUITECTONICA INTERNATIONAL CORP. DESIGN INTENT SHOWN IS SUBJECT TO REVIEW AND APPROVAL OF ALL APPLICABLE LOCAL AND GOVERNMENTAL AUTHORITIES HAVING JURISDICTION. ALL COPYRIGHTS RESERVED © 2019. THE DATA INCLUDED IN THIS STUDY IS CONCEPTUAL IN NATURE AND WILL CONTINUE TO BE MODIFIED THROUGHOUT THE COURSE OF THE PROJECTS DEVELOPMENT WITH THE EVENTUAL INTEGRATION OF STRUCTURAL, MEP AND LIFE SAFETY SYSTEMS. AS THESE ARE FURTHER REFINED, THE NUMBERS WILL BE ADJUSTED ACCORDINGLY.



## 444 BRICKELL ONE

77/99 SE 5th Street  
Miami, FL 33131

COMBO - UNITS 04/05

SCALE: 1/8" = 1'-0"

DATE:

7/14/2021

10:04:02 AM

## COMBO UNIT 2



# BACCARAT RESIDENCES TOWER FLOOR PLATE

