



**Elevation A**

Artist's rendering. Subject to change.



**Elevation B**

Artist's rendering. Subject to change.

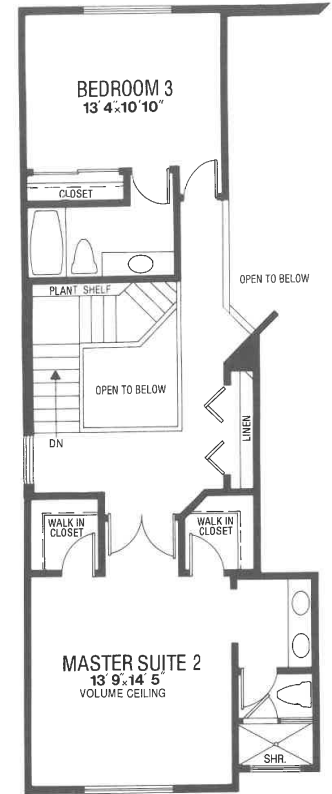
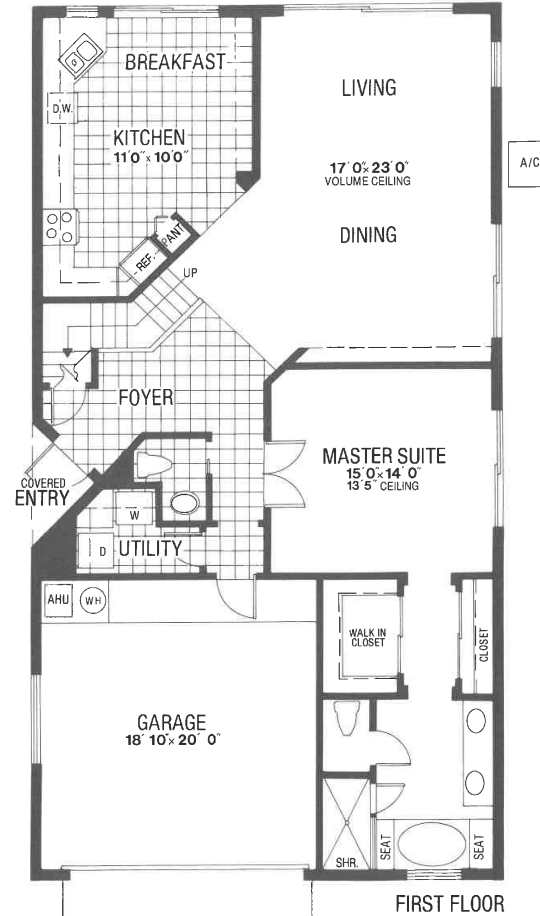
### Bel Air

3 Bedrooms / Breakfast Room  
 3 Full Bathrooms / 1 Half Bathroom  
 2,240 Square Feet of Living Area

Ahmanson Developments, Inc. and Marlex Housing, Inc., have joined Broken Sound's group of independent builders to bring you Laurel Pointe, a new village of 94 spacious single-family homes.

Laurel Pointe offers the home buyer a marvelous choice of four distinctively different floor plans all within a prestigious country club community. The privacy of single family living with fully maintained front yards.

For over 25 years Ahmanson and Marlex have been creating communities which reflect the highest standards in the homebuilding industry: thoughtful planning, innovative design and careful craftsmanship. With years of experience and dedication in the homebuilding industry, this team of professionals is committed to delivering creatively designed homes tailored to the homeowner's needs.



SECOND FLOOR



ALTERNATE SECOND FLOOR

All dimensions are approximate. Preliminary floor plan is subject to change without notice.