



Artist's rendering. Subject to change.

The Cloister-Alt.

3 Bedrooms/Den, 3 Full Baths
 With Family Room and
 Guest Suite With Full Bath
 3,338 Square Feet Living Area

Courtside at Broken Sound is another addition to the Arvida tradition of excellence. Adjacent to the Tennis Complex, most residences overlook the lake or golf course. Only 21 elegant single-family homes will be built here.

Exquisite floor plans feature ceramic tiled living areas and kitchen. The living, family and dining rooms are perfect for entertaining and take full advantage of windows and sliding glass doors that bring the outdoors in. Luxurious master bedroom suites offer master baths with designer appointments and spacious "his" and "hers" walk-in closets.

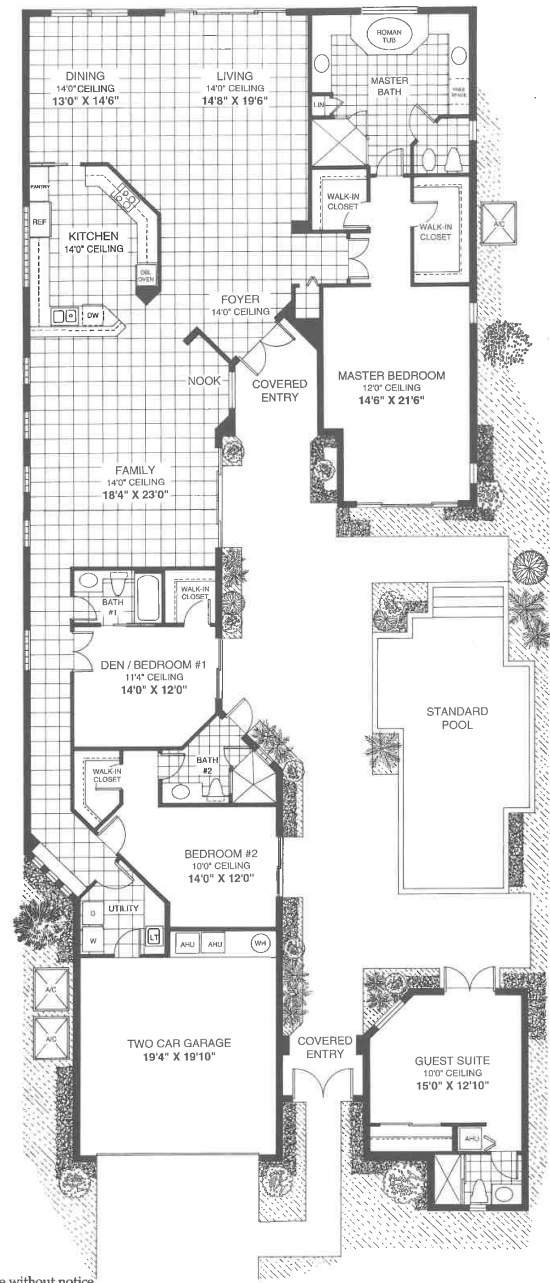
Outside you will find beautiful courtyards, covered patios and lush landscaping with a fully automatic sprinkler system. A swimming pool comes standard with the Cloister model. Optional pool, pool/spa, and pool patio are available with the Addison and

Cloister models, allowing you to tailor your home to your specific needs.

Residents of Courtside may apply for membership to the Clubs of Broken Sound. Members enjoy the finest country club amenities available anywhere in the country. Elegant Florida living, with two championship golf courses, a smashing tennis complex, splashy aquatics center, fitness center, and superb social club.

For over three decades, Arvida has maintained its commitment to quality, integrity and service combined with a tradition of financial strength and innovative thinking. Other successful villages by Arvida at Broken Sound include Bay Isle, Bay Pointe, Bent Creek, Cloisters, Oak Run, Whisper Trace and Banyans.

Arvida's Courtside at Broken Sound. It's where you want to be.



All dimensions are approximate. This floor plan is subject to change without notice.