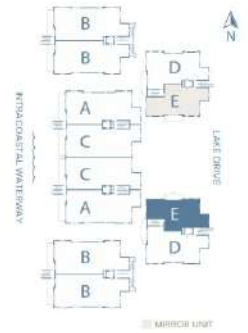


RESIDENCE E
2 Bedrooms | 2.5 Bathrooms

Interior 1,823 sf | Exterior 135 sf | Total 1,958 sf



DEVELOPED BY: JOHNSTON GROUP CAPITAL MANAGEMENT

ORAL REPRESENTATIONS CANNOT BE RELIED UPON AS CORRECTLY STATING REPRESENTATIONS OF THE DEVELOPER. FOR CORRECT REPRESENTATIONS, MAKE REFERENCE TO THIS BROCHURE AND TO THE DOCUMENTS REQUIRED BY SECTION 718.503, FLORIDA STATUTES, TO BE FURNISHED BY A DEVELOPER TO A BUYER OR LESSEE.

There are various methods for measuring the square footages of units and depending on the method used, the resulting unit square footages may vary from the unit square footage as stated in the prospectus and the declaration for the Condominium. Stated unit square footages are measured to the exterior boundaries of the exterior walls and the centerline of interior separating walls, and in fact vary from (and are greater than) the square footages determined by using the description and definition of the "Unit" set forth in the prospectus and declaration (which generally only includes the interior airspace between the unit perimeter walls and excludes interior structural components). All depictions and descriptions of units, views, appliances, finishes, fittings, fixtures, materials, colors, brands and/or specifications of equal or greater are proposed and are subject to change and/or substitution by developer in its sole discretion and without prior notice. The marina, piers and boat slips are not part of the Condominium. For complete legal disclaimers, privacy policy and terms of use, visit our website at www.HAVNResidences.com. © PBS Condominium, LLC. All Rights Reserved.

184 Lake Drive, Palm Beach Shores, FL 33404



ENV_PHSN_0624

RESIDENCE C
3 Bedrooms | 3.5 Bathrooms

Interior 2,606 sf | Exterior 220 sf | Total 2,826 sf



DEVELOPED BY: JOHNSTON GROUP CAPITAL MANAGEMENT

ORAL REPRESENTATIONS CANNOT BE RELIED UPON AS CORRECTLY STATING REPRESENTATIONS OF THE DEVELOPER. FOR CORRECT REPRESENTATIONS, MAKE REFERENCE TO THIS BROCHURE AND TO THE DOCUMENTS REQUIRED BY SECTION 718.503, FLORIDA STATUTES, TO BE FURNISHED BY A DEVELOPER TO A BUYER OR LESSEE.

There are various methods for measuring the square footages of units and depending on the method used, the resulting unit square footages may vary from the unit square footage as stated in the prospectus and the declaration for the Condominium. Stated unit square footages are measured to the exterior boundaries of the exterior walls and the centerline of interior separating walls, and in fact vary from (and are greater than) the square footages determined by using the description and definition of the "Unit" set forth in the prospectus and declaration (which generally only includes the interior airspace between the unit perimeter walls and excludes interior structural components). All depictions and descriptions of units, views, appliances, finishes, fittings, fixtures, materials, colors, brands and/or specifications of equal or greater are proposed and are subject to change and/or substitution by developer in its sole discretion and without prior notice. The marina, piers and boat slips are not part of the Condominium. For complete legal disclaimers, privacy policy and terms of use, visit our website at www.HAVNResidences.com. © PBS Condominium, LLC. All Rights Reserved.

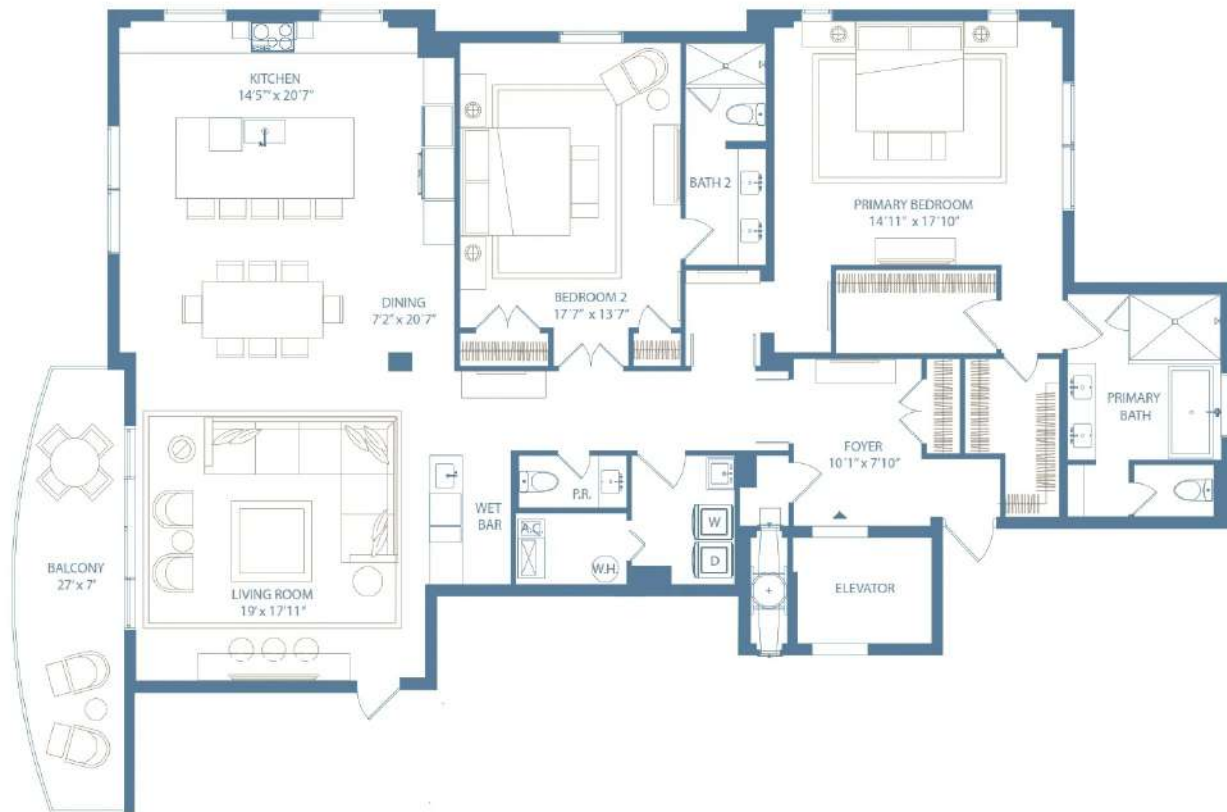
184 Lake Drive, Palm Beach Shores, FL 33404



TMPL_HAVN_CN24

RESIDENCE D
2 Bedrooms | 2.5 Bathrooms

Interior 2,198 sf | Exterior 171 sf | Total 2,369 sf



DEVELOPED BY: JOHNSTON GROUP CAPITAL MANAGEMENT

ORAL REPRESENTATIONS CANNOT BE RELIED UPON AS CORRECTLY STATING REPRESENTATIONS OF THE DEVELOPER. FOR CORRECT REPRESENTATIONS, MAKE REFERENCE TO THIS BROCHURE AND TO THE DOCUMENTS REQUIRED BY SECTION 718.503, FLORIDA STATUTES, TO BE FURNISHED BY A DEVELOPER TO A BUYER OR LESSEE.

There are various methods for measuring the square footages of units and depending on the method used, the resulting unit square footages may vary from the unit square footage as stated in the prospectus and the declaration for the Condominium. Stated unit square footages are measured to the exterior boundaries of the exterior walls and the centerline of interior separating walls, and in fact vary from (and are greater than) the square footages determined by using the description and definition of the "Unit" set forth in the prospectus and declaration (which generally only includes the interior airspace between the unit perimeter walls and excludes interior structural components). All depictions and descriptions of units, views, appliances, finishes, fittings, fixtures, materials, colors, brands and/or specifications of equal or greater are proposed and are subject to change and/or substitution by developer in its sole discretion and without prior notice. The marina, piers and boat slips are not part of the Condominium. For complete legal disclaimers, privacy policy and terms of use, visit our website at www.HAVNResidences.com. © PBS Condominium, LLC. All Rights Reserved.

184 Lake Drive, Palm Beach Shores, FL 33404



184_LHVC_OA_24

RESIDENCE A
3 Bedrooms / 3.5 Bathrooms

Interior 2,644 sf | Exterior 220 sf | Total 2,864 sf



DEVELOPED BY: JOHNSTON GROUP CAPITAL MANAGEMENT

ORAL REPRESENTATIONS CANNOT BE RELIED UPON AS CORRECTLY STATING REPRESENTATIONS OF THE DEVELOPER. FOR CORRECT REPRESENTATIONS, MAKE REFERENCE TO THIS BROCHURE AND TO THE DOCUMENTS REQUIRED BY SECTION 718.503, FLORIDA STATUTES, TO BE FURNISHED BY A DEVELOPER TO A BUYER OR LESSEE.

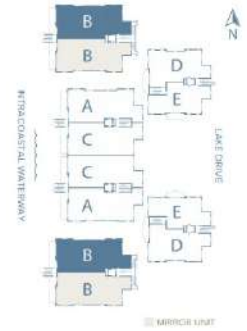
There are various methods for measuring the square footages of units and depending on the method used, the resulting unit square footages may vary from the unit square footage as stated in the prospectus and the declaration for the Condominium. Stated unit square footages are measured to the exterior boundaries of the exterior walls and the centerline of interior separating walls, and in fact vary from (and are greater than) the square footages determined by using the description and definition of the "Unit" set forth in the prospectus and declaration (which generally only includes the interior airspace between the unit perimeter walls and excludes interior structural components). All depictions and descriptions of units, views, appliances, finishes, fittings, fixtures, materials, colors, brands and/or specifications of equal or greater are proposed and are subject to change and/or substitution by developer in its sole discretion and without prior notice. The marina, piers and boat slips are not part of the Condominium. For complete legal disclaimers, privacy policy and terms of use, visit our website at www.HAVNResidences.com. © PBS Condominium, LLC. All Rights Reserved.

184 Lake Drive, Palm Beach Shores, FL 33404



TMV_HAVN_0624

RESIDENCE B
2 Bedrooms plus Den | 3 Bathrooms
Interior 2,662 sf | Exterior 219 sf | Total 2,881 sf



DEVELOPED BY: JOHNSTON GROUP CAPITAL MANAGEMENT

ORAL REPRESENTATIONS CANNOT BE RELIED UPON AS CORRECTLY STATING REPRESENTATIONS OF THE DEVELOPER. FOR CORRECT REPRESENTATIONS, MAKE REFERENCE TO THIS BROCHURE AND TO THE DOCUMENTS REQUIRED BY SECTION 718.503, FLORIDA STATUTES, TO BE FURNISHED BY A DEVELOPER TO A BUYER OR LESSEE.

There are various methods for measuring the square footages of units and depending on the method used, the resulting unit square footages may vary from the unit square footage as stated in the prospectus and the declaration for the Condominium. Stated unit square footages are measured to the exterior boundaries of the exterior walls and the centerline of interior despising walls, and in fact vary from (and are greater than) the square footages determined by using the description and definition of the "Unit" set forth in the prospectus and declaration (which generally only includes the interior airspace between the unit perimeter walls and excludes interior structural components). All depictions and descriptions of units, views, appliances, finishes, fittings, features, materials, colors, brands and/or specifications of equal or greater are proposed and are subject to change and/or substitution by developer in its sole discretion and without prior notice. The marina, piers and boat slips are not part of the Condominium. For complete legal disclaimers, privacy policy and terms of use, visit our website at www.HAVNResidences.com. © PBS Condominium, LLC. All Rights Reserved.

184 Lake Drive, Palm Beach Shores, FL 33404



PMU_HAVN_09.24