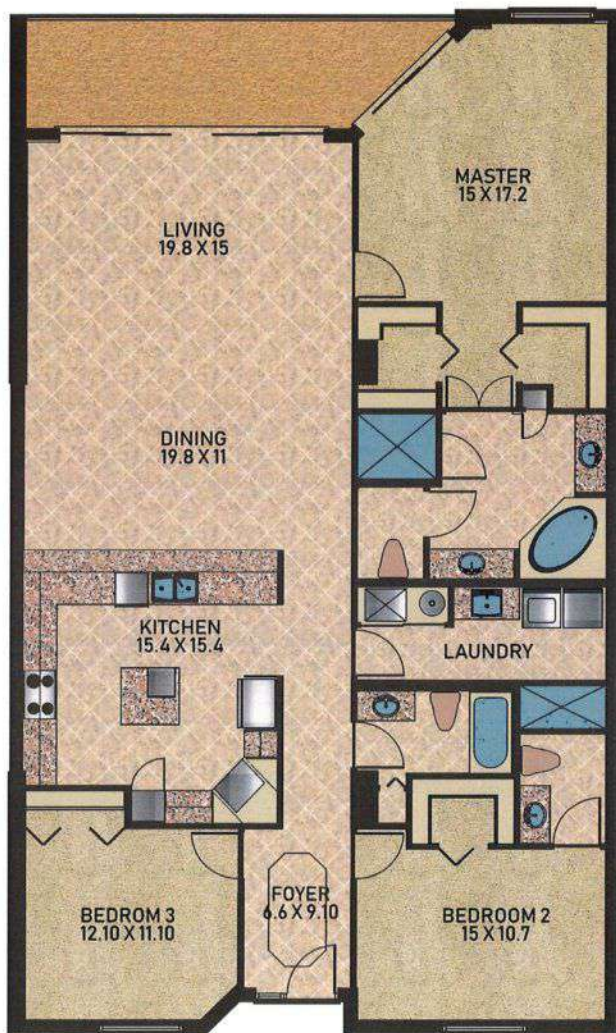
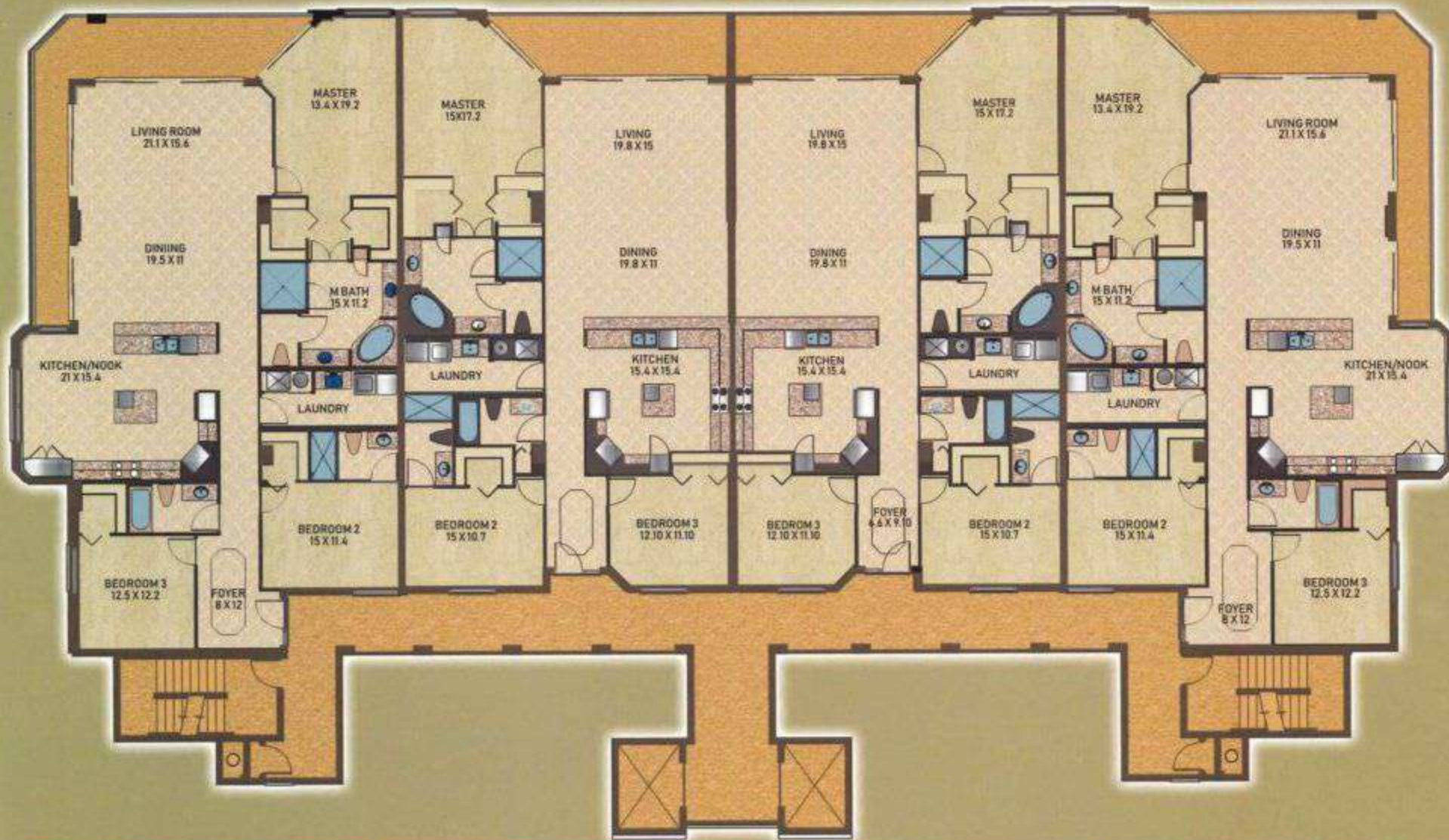


Paramount Riverfront



UNIT B

3 BEDROOM, 3 BATH
LIVING: 2,082 SF
BALCONY: 165 SF
TOTAL AREA: 2,247 SF



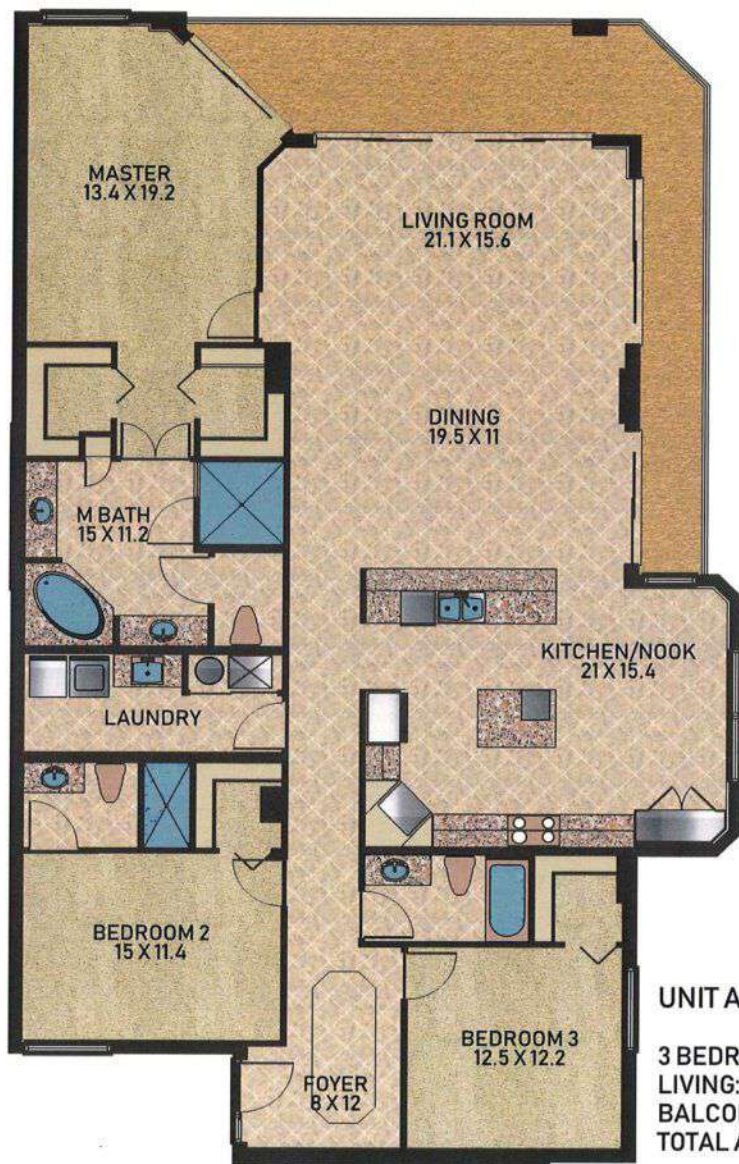
END UNIT (A)

3 BEDS | 3 BATHS | LIVING 2,345 SF
BALCONY 292 SF | TOTAL 2,637 SF

INSIDE UNIT (B)

3 BEDS | 3 BATHS | LIVING 2,082 SF
BALCONY 165 SF | TOTAL 2,247 SF

*Paramount
Riverfront*



UNIT A

3 BEDROOM, 3 BATH

LIVING: 2,345 SF

BALCONY: 292 SF

TOTAL AREA: 2,637 SF

ORAL REPRESENTATIONS CANNOT BE RELIED UPON AS CORRECTLY STATING REPRESENTATIONS OF THE DEVELOPER FOR CORRECT REPRESENTATIONS. MAKE REFERENCE TO THIS BROCHURE AND TO THE DOCUMENTS REQUIRED BY SECTION 718.503, FLORIDA STATUTES, TO BE FURNISHED TO A BUYER OR LESSEE. This artist rendering may assist the public in visualizing the homes. However, it may not accurately depict actual homes when built. Paramount Riverfront Condominium is developed by Meridian Riverfront Development, LLC. All right reserved, including the right of reproduction of this proprietary material in whole or in part in any form is strictly prohibited with the prior written permission of Meridian Riverfront Development, LLC.