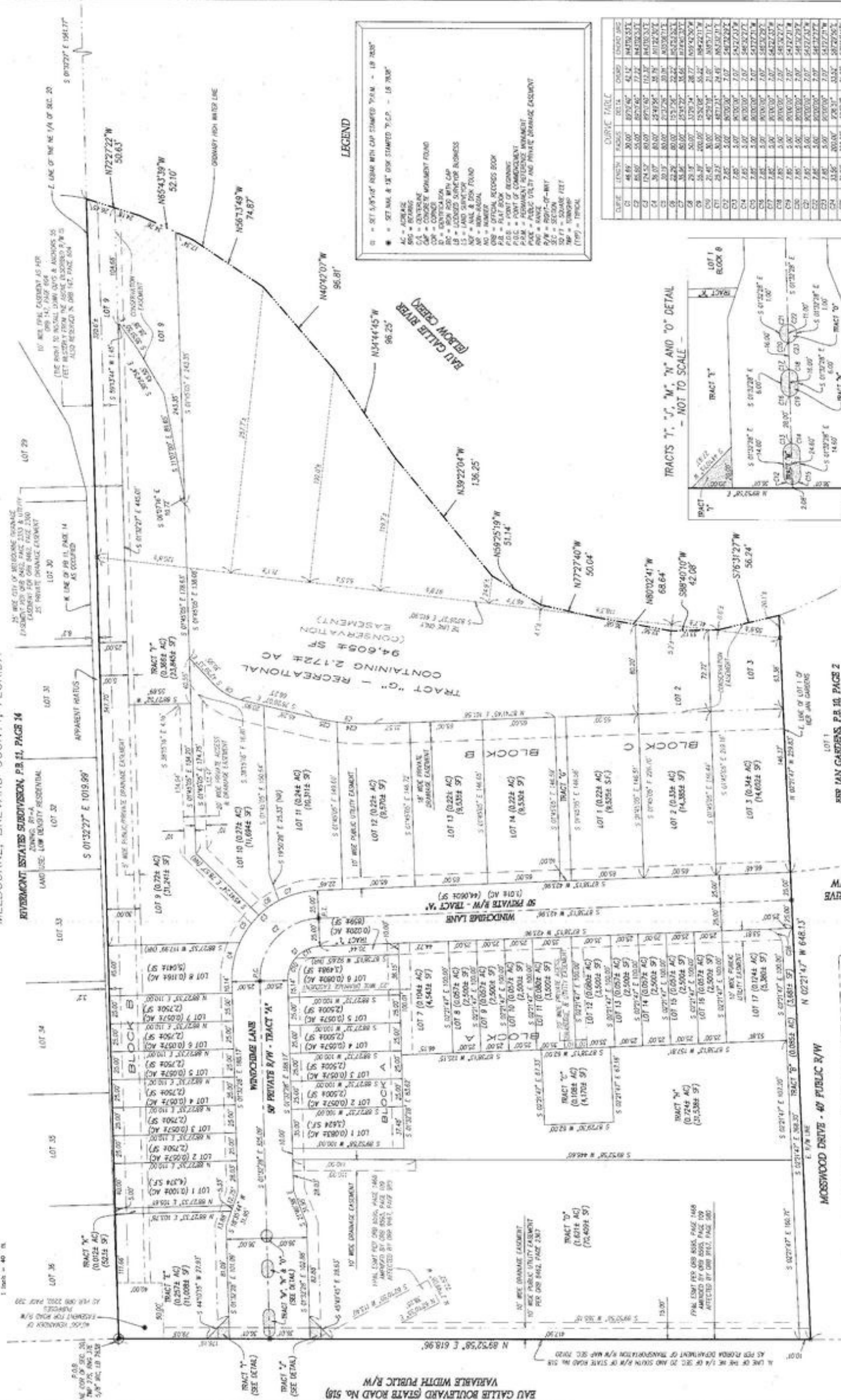


HIDDEN HARBOR ESTATES

A SUBDIVISION LYING IN SECTION 20, TOWNSHIP 27 SOUTH, RANGE 37 EAST, CITY OF MELBOURNE, BREVARD COUNTY, FLORIDA

NOTE: This plat is prepared in its graphic form, and the color depiction of the subdivided lands described herein and all in no way constitute an approval or warranty by the State of Florida, and no reliance should be placed thereon. Any additional restrictions that are not recorded on this plat may be found in the public records of the county.



CURVE TABLE

CURVE	LENGTH	RADIUS	DELTA	CHORD	CHORD BEING
C1	46.89	30.00	80.734°	42.14	18470.531
C2	85.97	50.00	80.734°	77.22	18470.531
C3	124.57	80.00	80.734°	112.20	18470.531
C4	163.17	110.00	80.734°	147.18	18470.531
C5	201.77	140.00	80.734°	182.16	18470.531
C6	240.37	170.00	80.734°	217.14	18470.531
C7	278.97	200.00	80.734°	252.12	18470.531
C8	317.57	230.00	80.734°	287.10	18470.531
C9	356.17	260.00	80.734°	322.08	18470.531
C10	394.77	290.00	80.734°	357.06	18470.531
C11	433.37	320.00	80.734°	392.04	18470.531
C12	471.97	350.00	80.734°	427.02	18470.531
C13	510.57	380.00	80.734°	462.00	18470.531
C14	549.17	410.00	80.734°	496.98	18470.531
C15	587.77	440.00	80.734°	531.96	18470.531
C16	626.37	470.00	80.734°	566.94	18470.531
C17	664.97	500.00	80.734°	601.92	18470.531
C18	703.57	530.00	80.734°	636.90	18470.531
C19	742.17	560.00	80.734°	671.88	18470.531
C20	780.77	590.00	80.734°	706.86	18470.531
C21	819.37	620.00	80.734°	741.84	18470.531
C22	857.97	650.00	80.734°	776.82	18470.531
C23	896.57	680.00	80.734°	811.80	18470.531
C24	935.17	710.00	80.734°	846.78	18470.531
C25	973.77	740.00	80.734°	881.76	18470.531
C26	1012.37	770.00	80.734°	916.74	18470.531
C27	1050.97	800.00	80.734°	951.72	18470.531
C28	1089.57	830.00	80.734°	986.70	18470.531
C29	1128.17	860.00	80.734°	1021.68	18470.531
C30	1166.77	890.00	80.734°	1056.66	18470.531
C31	1205.37	920.00	80.734°	1091.64	18470.531
C32	1243.97	950.00	80.734°	1126.62	18470.531
C33	1282.57	980.00	80.734°	1161.60	18470.531
C34	1321.17	1010.00	80.734°	1196.58	18470.531
C35	1359.77	1040.00	80.734°	1231.56	18470.531
C36	1398.37	1070.00	80.734°	1266.54	18470.531
C37	1436.97	1100.00	80.734°	1301.52	18470.531
C38	1475.57	1130.00	80.734°	1336.50	18470.531
C39	1514.17	1160.00	80.734°	1371.48	18470.531
C40	1552.77	1190.00	80.734°	1406.46	18470.531
C41	1591.37	1220.00	80.734°	1441.44	18470.531
C42	1629.97	1250.00	80.734°	1476.42	18470.531
C43	1668.57	1280.00	80.734°	1511.40	18470.531
C44	1707.17	1310.00	80.734°	1546.38	18470.531
C45	1745.77	1340.00	80.734°	1581.36	18470.531
C46	1784.37	1370.00	80.734°	1616.34	18470.531
C47	1822.97	1400.00	80.734°	1651.32	18470.531
C48	1861.57	1430.00	80.734°	1686.30	18470.531
C49	1900.17	1460.00	80.734°	1721.28	18470.531
C50	1938.77	1490.00	80.734°	1756.26	18470.531
C51	1977.37	1520.00	80.734°	1791.24	18470.531
C52	2015.97	1550.00	80.734°	1826.22	18470.531
C53	2054.57	1580.00	80.734°	1861.20	18470.531
C54	2093.17	1610.00	80.734°	1896.18	18470.531
C55	2131.77	1640.00	80.734°	1931.16	18470.531
C56	2170.37	1670.00	80.734°	1966.14	18470.531
C57	2208.97	1700.00	80.734°	2001.12	18470.531
C58	2247.57	1730.00	80.734°	2036.10	18470.531
C59	2286.17	1760.00	80.734°	2071.08	18470.531
C60	2324.77	1790.00	80.734°	2106.06	18470.531
C61	2363.37	1820.00	80.734°	2141.04	18470.531
C62	2401.97	1850.00	80.734°	2176.02	18470.531
C63	2440.57	1880.00	80.734°	2211.00	18470.531
C64	2479.17	1910.00	80.734°	2245.98	18470.531
C65	2517.77	1940.00	80.734°	2280.96	18470.531
C66	2556.37	1970.00	80.734°	2315.94	18470.531
C67	2594.97	2000.00	80.734°	2350.92	18470.531
C68	2633.57	2030.00	80.734°	2385.90	18470.531
C69	2672.17	2060.00	80.734°	2420.88	18470.531
C70	2710.77	2090.00	80.734°	2455.86	18470.531
C71	2749.37	2120.00	80.734°	2490.84	18470.531
C72	2787.97	2150.00	80.734°	2525.82	18470.531
C73	2826.57	2180.00	80.734°	2560.80	18470.531
C74	2865.17	2210.00	80.734°	2595.78	18470.531
C75	2903.77	2240.00	80.734°	2630.76	18470.531
C76	2942.37	2270.00	80.734°	2665.74	18470.531
C77	2980.97	2300.00	80.734°	2700.72	18470.531
C78	3019.57	2330.00	80.734°	2735.70	18470.531
C79	3058.17	2360.00	80.734°	2770.68	18470.531
C80	3096.77	2390.00	80.734°	2805.66	18470.531
C81	3135.37	2420.00	80.734°	2840.64	18470.531
C82	3173.97	2450.00	80.734°	2875.62	18470.531
C83	3212.57	2480.00	80.734°	2910.60	18470.531
C84	3251.17	2510.00	80.734°	2945.58	18470.531
C85	3289.77	2540.00	80.734°	2980.56	18470.531
C86	3328.37	2570.00	80.734°	3015.54	18470.531
C87	3366.97	2600.00	80.734°	3050.52	18470.531
C88	3405.57	2630.00	80.734°	3085.50	18470.531
C89	3444.17	2660.00	80.734°	3120.48	18470.531
C90	3482.77	2690.00	80.734°	3155.46	18470.531
C91	3521.37	2720.00	80.734°	3190.44	18470.531
C92	3559.97	2750.00	80.734°	3225.42	18470.531
C93	3598.57	2780.00	80.734°	3260.40	18470.531
C94	3637.17	2810.00	80.734°	3295.38	18470.531
C95	3675.77	2840.00	80.734°	3330.36	18470.531
C96	3714.37	2870.00	80.734°	3365.34	18470.531
C97	3752.97	2900.00	80.734°	3400.32	18470.531
C98	3791.57	2930.00	80.734°	3435.30	18470.531
C99	3830.17	2960.00	80.734°	3470.28	18470.531
C100	3868.77	2990.00	80.734°	3505.26	18470.531

BEER JAN GARIBOLDI, P.B. 10, PAGE 2
 TOWNSHIP 27-A
 RANGE 37-A
 SECTION 20, TOWNSHIP 27 SOUTH, RANGE 37 EAST, CITY OF MELBOURNE, BREVARD COUNTY, FLORIDA

MOSSWOOD DRIVE - 40' PUBLIC R/W
 N 02°21'47" E 648.13'
 E 87°14'17" S 205.67'
 S 01°40'55" E 209.16'

AS PER FLORIDA DEPARTMENT OF TRANSPORTATION (FLORIDA STATE ROAD NO. 518)
 E 1/4 OF THE 1/4 OF SEC. 20 AND S 1/4 OF SEC. 20
 N 89°25'58" E 618.96'