



# HIDDEN HARBOR ESTATES

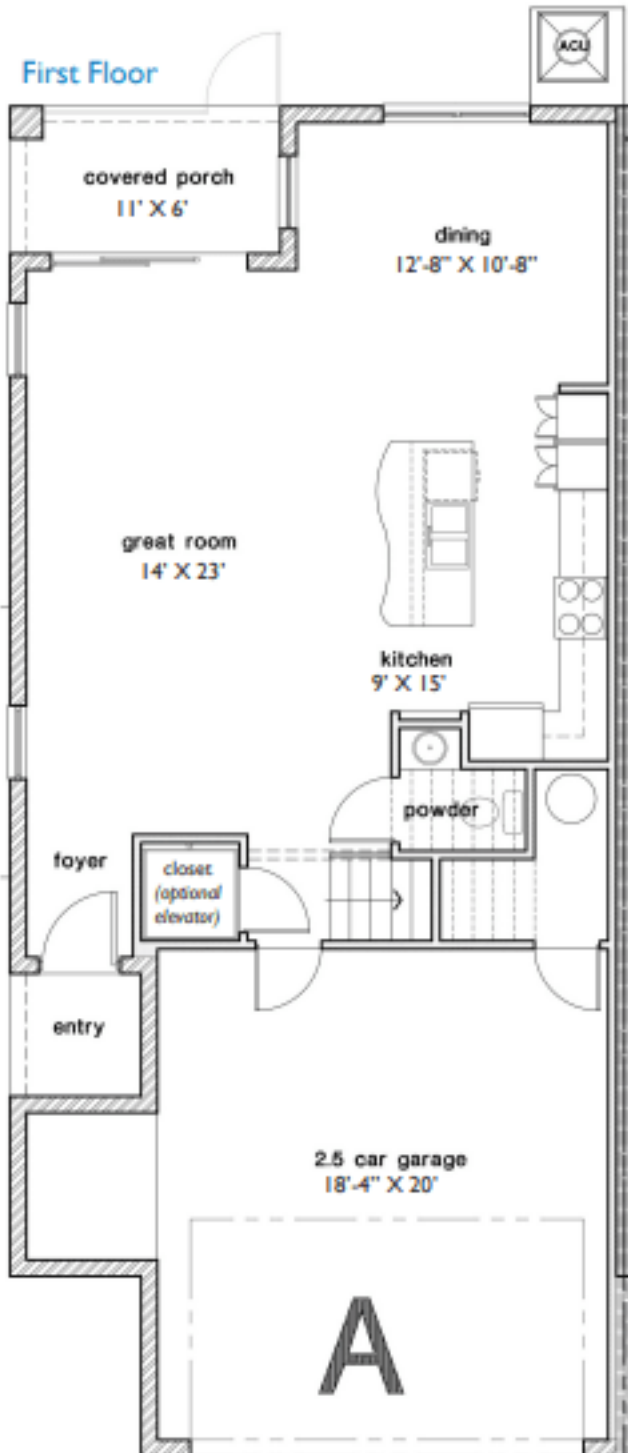
1245 W. Eau Gallie Blvd. Melbourne, FL 32935

## Floor Plan A 2,056 ± sf

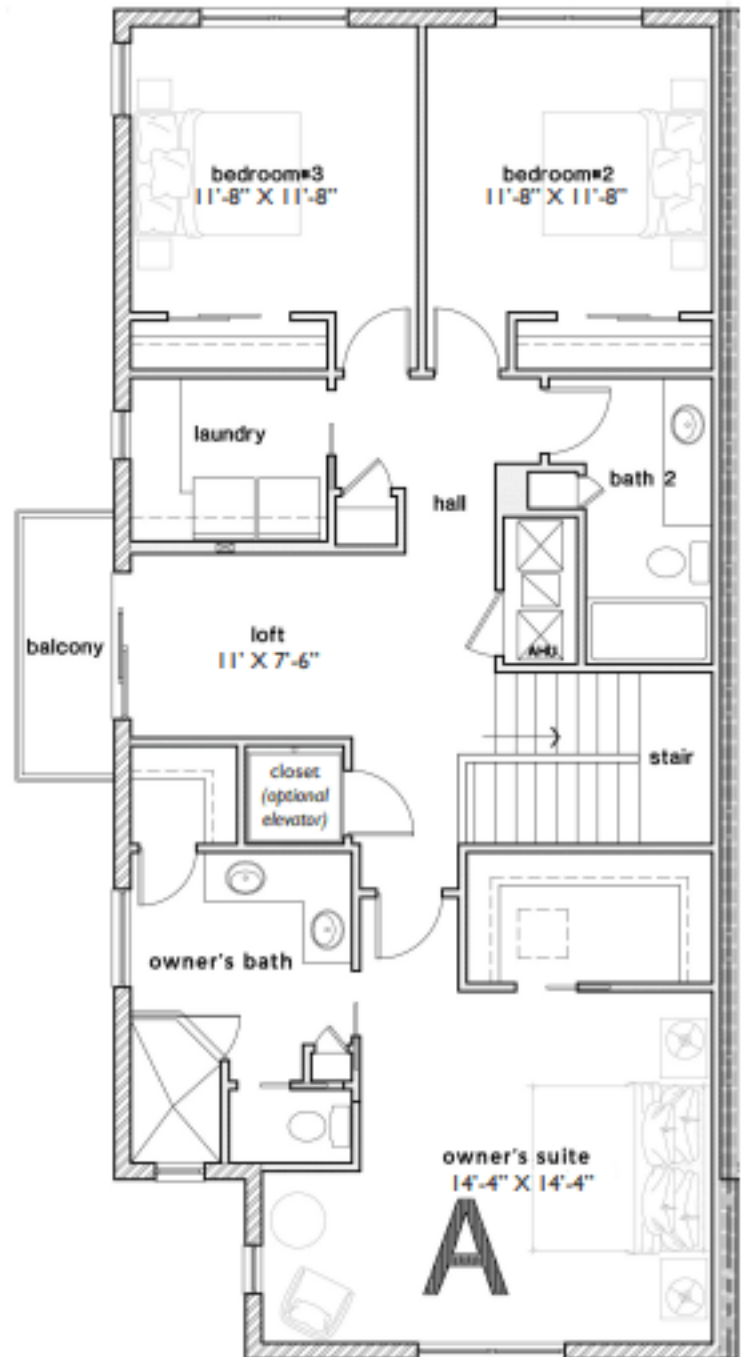
### AREA TABULATION UNITS A-D

FIRST FLOOR LIVING	792 SF
SECOND FLOOR LIVING	1,264 SF
<b>TOTAL LIVING</b>	<b>2,056 SF</b>
GARAGE	452 SF
ENTRY	28 SF
COVERED PORCH	66 SF
BALCONY (UNCOVERED)	44 SF
<b>GRAND TOTAL</b>	<b>2,646 SF</b>

### First Floor



### Second Floor



All dimensions and specifications (including square footages) are approximate and provided for comparison purposes only and are subject to change in the sole discretion of the developer and should not be relied upon when making a decision to purchase a home. Actual areas may be smaller. Maps, site plans, floor plans, sketches, drawings and elevations are artist renderings and are for informational purposes only and subject to change without notice.