

RESIDENCE A

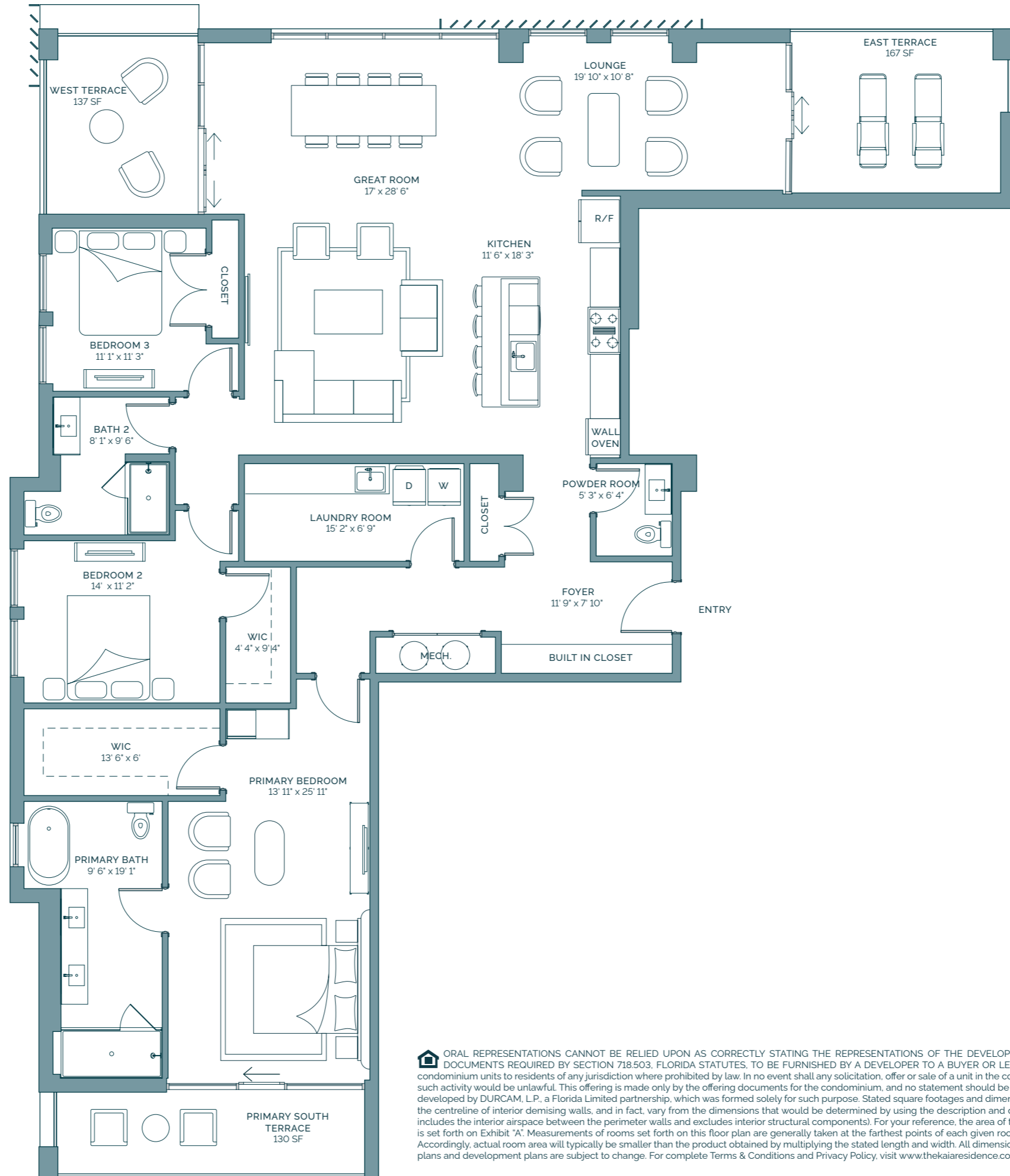
FLOOR 2 - 4

3 BEDROOMS
2 BATHS
1 POWDER ROOM

INTERIOR: 2,424 SQ FT

EXTERIOR: 434 SQ FT

TOTAL: 2,858 SQ FT



OCEANFRONT



ORAL REPRESENTATIONS CANNOT BE RELIED UPON AS CORRECTLY STATING THE REPRESENTATIONS OF THE DEVELOPER. FOR CORRECT REPRESENTATIONS, MAKE REFERENCE TO THE DOCUMENTS REQUIRED BY SECTION 718.503, FLORIDA STATUTES, TO BE FURNISHED BY A DEVELOPER TO A BUYER OR LESSEE. This is not intended to be an offer to sell, or solicitation to buy, condominium units to residents of any jurisdiction where prohibited by law. In no event shall any solicitation, offer or sale of a unit in the condominium be made in, or to residents of, any state or country in which such activity would be unlawful. This offering is made only by the offering documents for the condominium, and no statement should be relied upon if not made in the offering documents. This project is being developed by DURCAM, L.P., a Florida Limited partnership, which was formed solely for such purpose. Stated square footages and dimensions are measured to the exterior boundaries of the exterior walls and the centerline of interior demising walls, and in fact, vary from the dimensions that would be determined by using the description and definition of the "Unit" set forth in the Declaration (which generally only includes the interior airspace between the perimeter walls and excludes interior structural components). For your reference, the area of the Unit, determined in accordance with those defined unit boundaries, is set forth on Exhibit "A". Measurements of rooms set forth on this floor plan are generally taken at the farthest points of each given room (as if the room were a perfect rectangle) without regard for cutouts. Accordingly, actual room area will typically be smaller than the product obtained by multiplying the stated length and width. All dimensions are approximate and may vary with actual construction, and all floor plans and development plans are subject to change. For complete Terms & Conditions and Privacy Policy, visit www.thekaiarresidence.com

RESIDENCE B

FLOORS 2 - 4

3 BEDROOMS

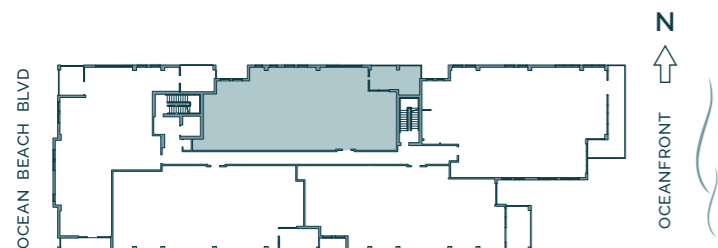
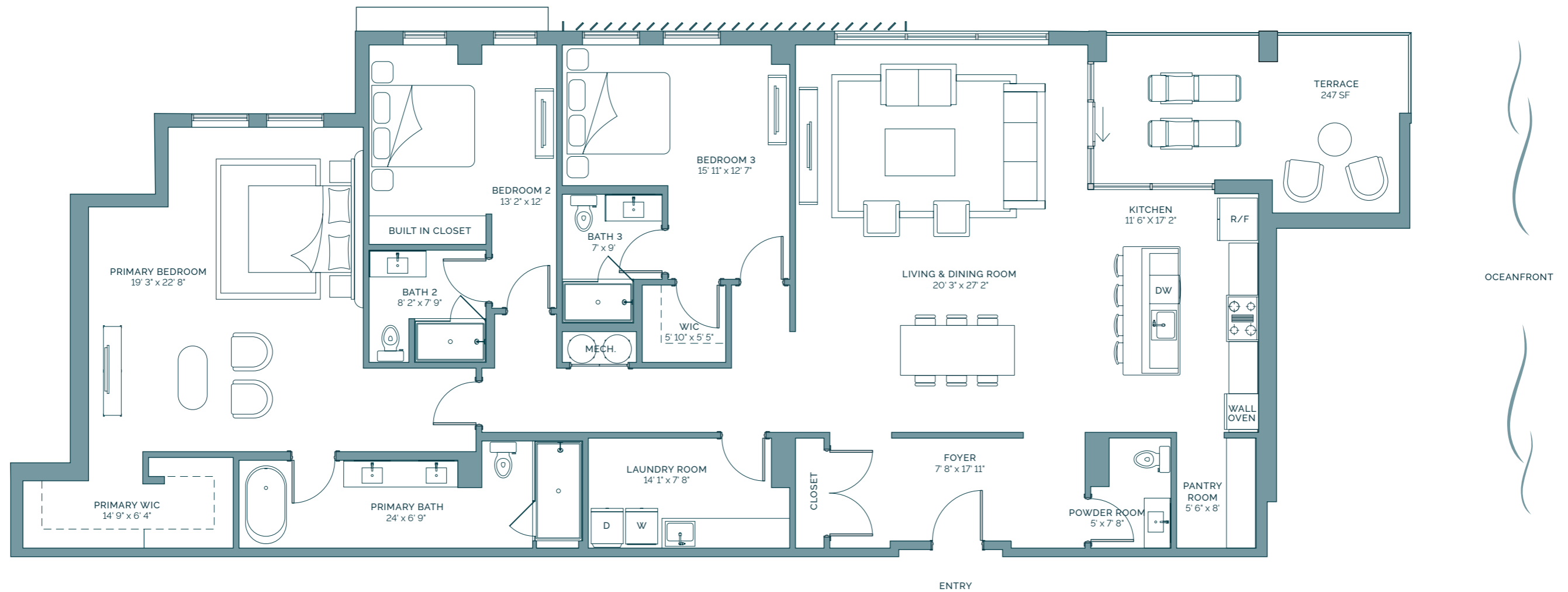
3 BATHS

1 POWDER ROOM

INTERIOR: 2,657 SQ FT

EXTERIOR: 247 SQ FT

TOTAL: 2,904 SQ FT



ORAL REPRESENTATIONS CANNOT BE RELIED UPON AS CORRECTLY STATING THE REPRESENTATIONS OF THE DEVELOPER. FOR CORRECT REPRESENTATIONS, MAKE REFERENCE TO THE DOCUMENTS REQUIRED BY SECTION 718.503, FLORIDA STATUTES, TO BE FURNISHED BY A DEVELOPER TO A BUYER OR LESSEE. This is not intended to be an offer to sell, or solicitation to buy, condominium units to residents of any jurisdiction where prohibited by law. In no event shall any solicitation, offer or sale of a unit in the condominium be made in, or to residents of, any state or country in which such activity would be unlawful. This offering is made only by the offering documents for the condominium, and no statement should be relied upon if not made in the offering documents. This project is being developed by DURCAM, L.P., a Florida Limited partnership, which was formed solely for such purpose. Stated square footages and dimensions are measured to the exterior boundaries of the exterior walls and the centerline of interior demising walls, and in fact, vary from the dimensions that would be determined by using the description and definition of the "Unit" set forth in the Declaration (which generally only includes the interior airspace between the perimeter walls and excludes interior structural components). For your reference, the area of the Unit, determined in accordance with those defined unit boundaries, is set forth on Exhibit "A". Measurements of rooms set forth on this floor plan are generally taken at the farthest points of each given room (as if the room were a perfect rectangle) without regard for cutouts. Accordingly, actual room area will typically be smaller than the product obtained by multiplying the stated length and width. All dimensions are approximate and may vary with actual construction, and all floor plans and development plans are subject to change. For complete Terms & Conditions and Privacy Policy, visit www.thekaiarresidence.com

RESIDENCE C

FLOORS 2 - 4

3 BEDROOMS

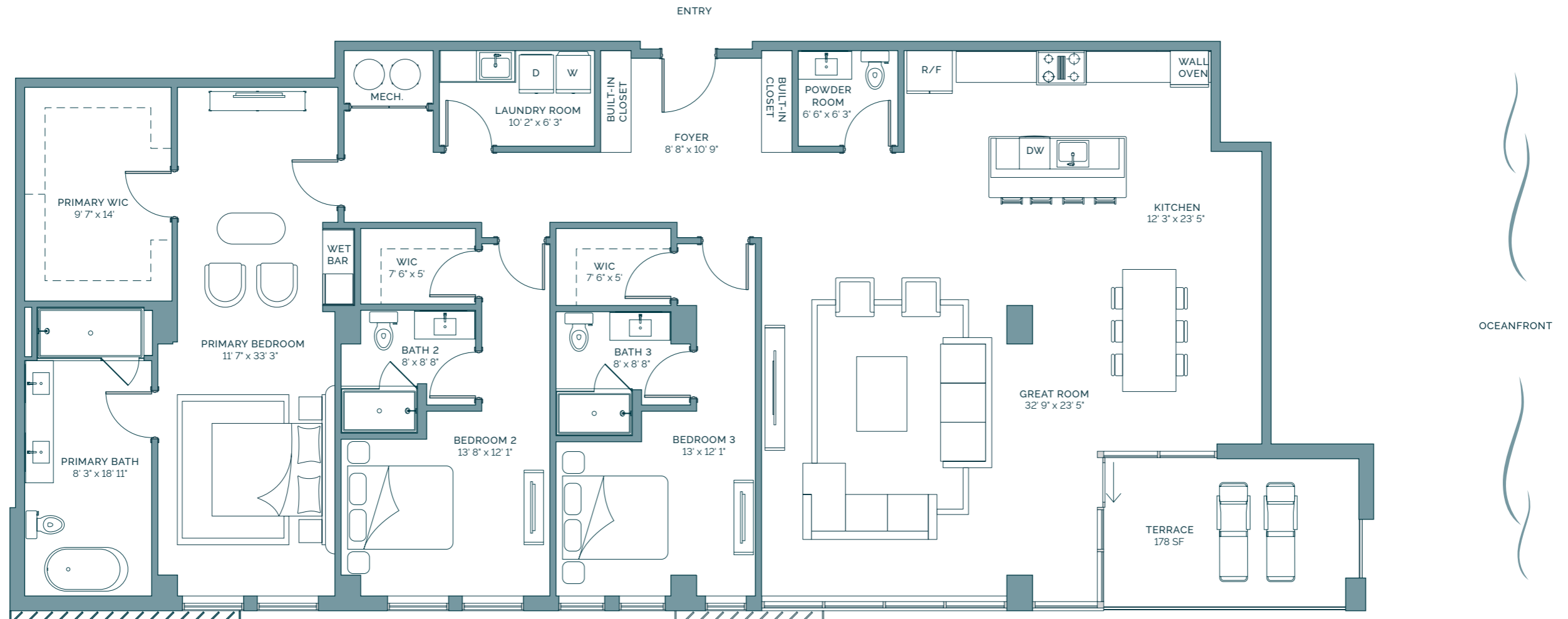
3 BATHS

1 POWDER ROOM

INTERIOR: 2,726 SQ FT

EXTERIOR: 178 SQ FT

TOTAL: 2,904 SQ FT



ORAL REPRESENTATIONS CANNOT BE RELIED UPON AS CORRECTLY STATING THE REPRESENTATIONS OF THE DEVELOPER. FOR CORRECT REPRESENTATIONS, MAKE REFERENCE TO THE DOCUMENTS REQUIRED BY SECTION 718.503, FLORIDA STATUTES, TO BE FURNISHED BY A DEVELOPER TO A BUYER OR LESSEE. This is not intended to be an offer to sell, or solicitation to buy, condominium units to residents of any jurisdiction where prohibited by law. In no event shall any solicitation, offer or sale of a unit in the condominium be made in, or to residents of, any state or country in which such activity would be unlawful. This offering is made only by the offering documents for the condominium, and no statement should be relied upon if not made in the offering documents. This project is being developed by DURCAM, L.P., a Florida Limited partnership, which was formed solely for such purpose. Stated square footages and dimensions are measured to the exterior boundaries of the exterior walls and the centerline of interior demising walls, and in fact, vary from the dimensions that would be determined by using the description and definition of the "Unit" set forth in the Declaration (which generally only includes the interior airspace between the perimeter walls and excludes interior structural components). For your reference, the area of the Unit, determined in accordance with those defined unit boundaries, is set forth on Exhibit "A". Measurements of rooms set forth on this floor plan are generally taken at the farthest points of each given room (as if the room were a perfect rectangle) without regard for cutouts. Accordingly, actual room area will typically be smaller than the product obtained by multiplying the stated length and width. All dimensions are approximate and may vary with actual construction, and all floor plans and development plans are subject to change. For complete Terms & Conditions and Privacy Policy, visit www.thekaiarresidence.com

RESIDENCE D

FLOORS 2 - 4

3 BEDROOMS

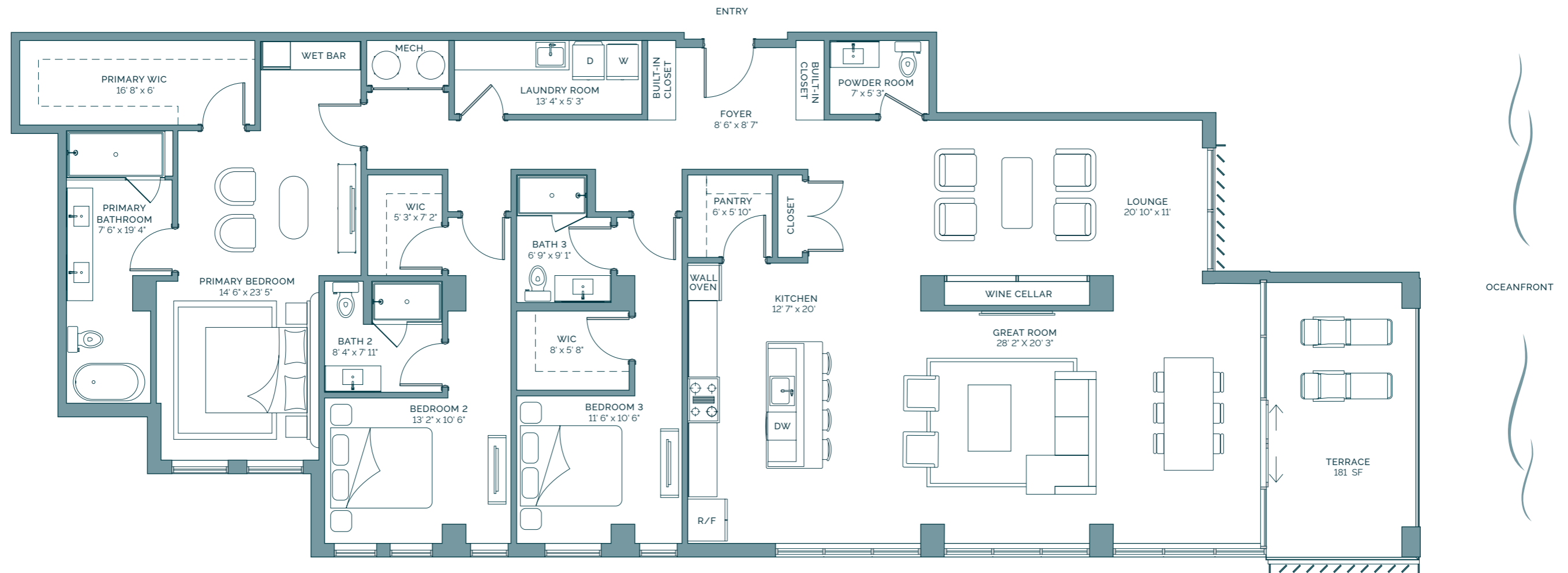
3 BATHS

1 POWDER ROOM

INTERIOR: 2,752 SQ FT

EXTERIOR: 181 SQ FT

TOTAL: 2,933 SQ FT



ORAL REPRESENTATIONS CANNOT BE RELIED UPON AS CORRECTLY STATING THE REPRESENTATIONS OF THE DEVELOPER. FOR CORRECT REPRESENTATIONS, MAKE REFERENCE TO THE DOCUMENTS REQUIRED BY SECTION 718.503, FLORIDA STATUTES, TO BE FURNISHED BY A DEVELOPER TO A BUYER OR LESSEE. This is not intended to be an offer to sell, or solicitation to buy, condominium units to residents of any jurisdiction where prohibited by law. In no event shall any solicitation, offer or sale of a unit in the condominium be made in, or to residents of, any state or country in which such activity would be unlawful. This offering is made only by the offering documents for the condominium, and no statement should be relied upon if not made in the offering documents. This project is being developed by DURCAM, L.P., a Florida Limited partnership, which was formed solely for such purpose. Stated square footages and dimensions are measured to the exterior boundaries of the exterior walls and the centerline of interior demising walls, and in fact, vary from the dimensions that would be determined by using the description and definition of the "Unit" set forth in the Declaration (which generally only includes the interior airspace between the perimeter walls and excludes interior structural components). For your reference, the area of the Unit, determined in accordance with those defined unit boundaries, is set forth on Exhibit "A". Measurements of rooms set forth on this floor plan are generally taken at the farthest points of each given room (as if the room were a perfect rectangle) without regard for cutouts. Accordingly, actual room area will typically be smaller than the product obtained by multiplying the stated length and width. All dimensions are approximate and may vary with actual construction, and all floor plans and development plans are subject to change. For complete Terms & Conditions and Privacy Policy, visit www.thekaiarresidence.com

RESIDENCE E

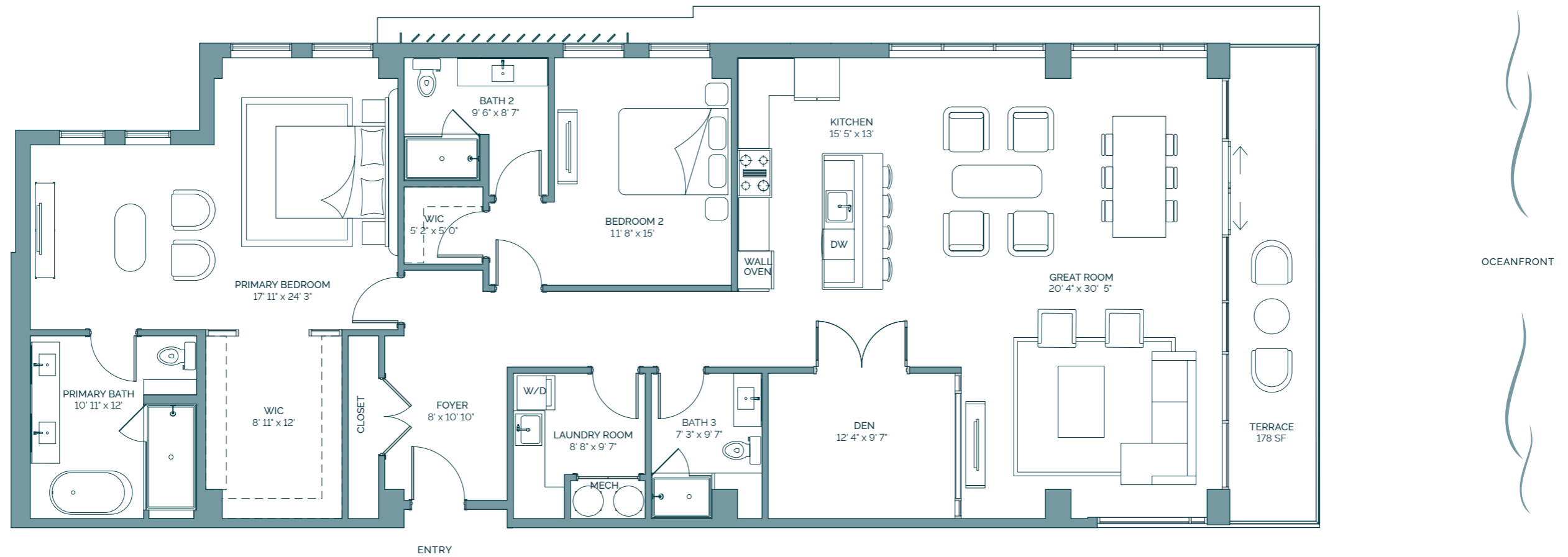
FLOOR 2

2 BEDROOMS
3 BATHS
1 POWDER ROOM
1 DEN

INTERIOR: 2,312 SQ FT

EXTERIOR: 178 SQ FT

TOTAL: 2,490 SQ FT



ORAL REPRESENTATIONS CANNOT BE RELIED UPON AS CORRECTLY STATING THE REPRESENTATIONS OF THE DEVELOPER. FOR CORRECT REPRESENTATIONS, MAKE REFERENCE TO THE DOCUMENTS REQUIRED BY SECTION 718.503, FLORIDA STATUTES, TO BE FURNISHED BY A DEVELOPER TO A BUYER OR LESSEE. This is not intended to be an offer to sell, or solicitation to buy, condominium units to residents of any jurisdiction where prohibited by law. In no event shall any solicitation, offer or sale of a unit in the condominium be made in, or to residents of, any state or country in which such activity would be unlawful. This offering is made only by the offering documents for the condominium, and no statement should be relied upon if not made in the offering documents. This project is being developed by DURCAM, L.P., a Florida Limited partnership, which was formed solely for such purpose. Stated square footages and dimensions are measured to the exterior boundaries of the exterior walls and the centerline of interior demising walls, and in fact, vary from the dimensions that would be determined by using the description and definition of the "Unit" set forth in the Declaration (which generally only includes the interior airspace between the perimeter walls and excludes interior structural components). For your reference, the area of the Unit, determined in accordance with those defined unit boundaries, is set forth on Exhibit "A". Measurements of rooms set forth on this floor plan are generally taken at the farthest points of each given room (as if the room were a perfect rectangle) without regard for cutouts. Accordingly, actual room area will typically be smaller than the product obtained by multiplying the stated length and width. All dimensions are approximate and may vary with actual construction, and all floor plans and development plans are subject to change. For complete Terms & Conditions and Privacy Policy, visit www.thekaiarresidence.com

RESIDENCE F

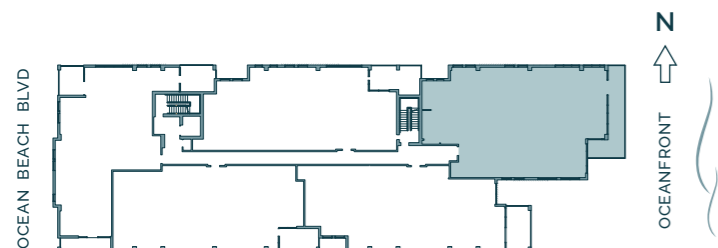
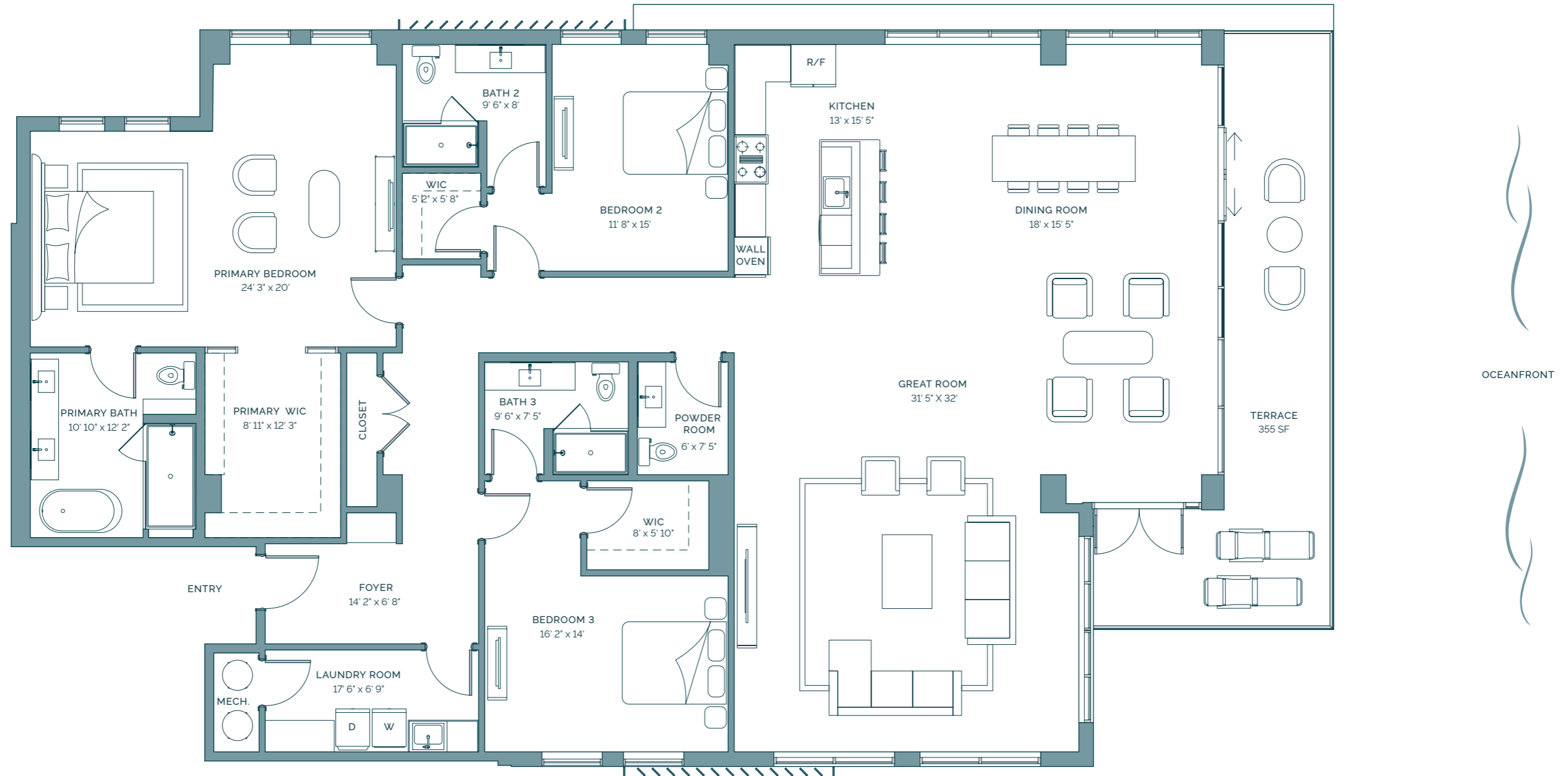
FLOOR 4

3 BEDROOMS
3 BATHS
1 POWDER ROOM

INTERIOR: 3,293 SQ FT

EXTERIOR: 355 SQ FT

TOTAL: 3,648 SQ FT



DISCLAIMER: ORAL REPRESENTATIONS CANNOT BE RELIED UPON AS CORRECTLY STATING THE REPRESENTATIONS OF THE DEVELOPER. FOR CORRECT REPRESENTATIONS, MAKE REFERENCE TO THE DOCUMENTS REQUIRED BY SECTION 718.503, FLORIDA STATUTES, TO BE FURNISHED BY A DEVELOPER TO A BUYER OR LESSEE. This is not intended to be an offer to sell, or solicitation to buy, condominium units to residents of any jurisdiction where prohibited by law. In no event shall any solicitation, offer or sale of a unit in the condominium be made in, or to residents of, any state or country in which such activity would be unlawful. This offering is made only by the offering documents for the condominium, and no statement should be relied upon if not made in the offering documents. This project is being developed by DURCAM, L.P., a Florida Limited partnership, which was formed solely for such purpose. Stated square footages and dimensions are measured to the exterior boundaries of the exterior walls and the centerline of interior demising walls, and in fact, vary from the dimensions that would be determined by using the description and definition of the "Unit" set forth in the Declaration (which generally only includes the interior airspace between the perimeter walls and excludes interior structural components). For your reference, the area of the Unit, determined in accordance with those defined unit boundaries, is set forth on Exhibit "A". Measurements of rooms set forth on this floor plan are generally taken at the farthest points of each given room (as if the room were a perfect rectangle) without regard for cutouts. Accordingly, actual room area will typically be smaller than the product obtained by multiplying the stated length and width. All dimensions are approximate and may vary with actual construction, and all floor plans and development plans are subject to change. For complete Terms & Conditions and Privacy Policy, visit www.thekaiarresidence.com