

**RINA DIRISIO**  
REAL ESTATE, BUT BETTER



**68 TRADEWIND DRIVE**

OAKVILLE, ON



## THE LIFESTYLE YOU'VE BEEN DREAMING OF AWAITS IN BRONTE. ONE OF OAKVILLE'S MOST DESIRABLE WATERFRONT COMMUNITIES.

Enjoy a short walk to the scenic shoreline of Bronte Heritage Waterfront Park, picturesque Bronte Harbour, and Fisherman's Wharf, where you can spend tranquil afternoons watching sailboats skim the sparkling waters of Lake Ontario. Bronte Village exudes a charming, vibrant energy with an excellent collection of stylish cafés, inviting bistros, and acclaimed restaurants perfect for relaxed lunches or elegant dining. Browse the village's trendy shops to discover unique treasures and gourmet delights. Everyday conveniences—including banks, pharmacies, and the popular Farm Boy—are just a short walk away, and commuters will appreciate quick access to major highways and the nearby Bronte GO Station, making travel throughout the region effortless.

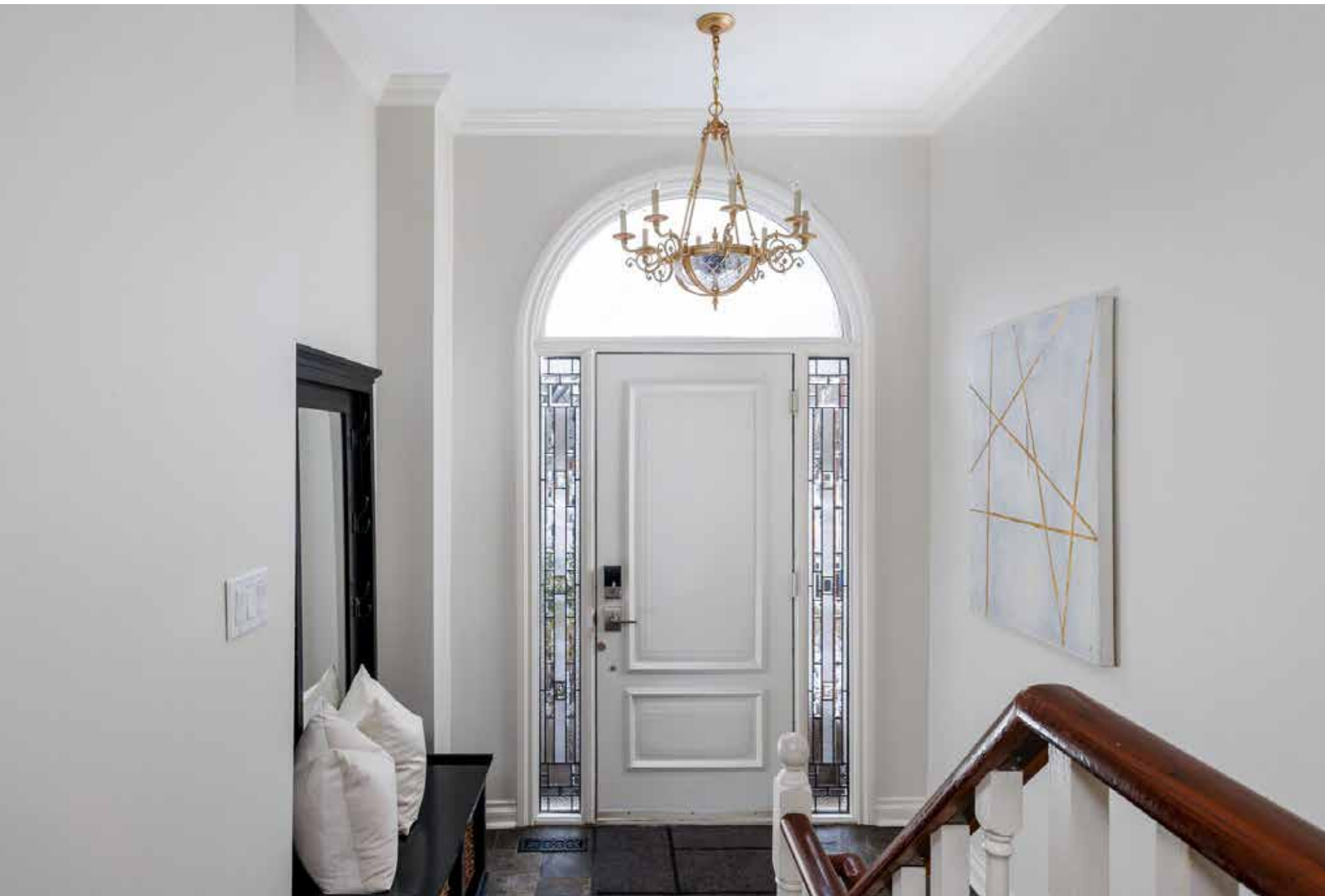
This beautifully updated 3-bedroom, 2.5 bathroom, freehold townhome in Schooner's Reach is finished top to bottom. Geared for entertaining, the vast living room and dining room with hardwood floors and a ledgestone fireplace enjoy seamless access to the private, oversized terrace with wood-slat side walls and glass-panel railings, offering serene views of green space, exclusive-use tennis court, and towering mature trees. The stunning eat-in kitchen features recently refaced white cabinetry, upper display cabinets with glass doors, granite counters, quality stainless steel appliances, and a breakfast room with an oversized bay window. The second floor comprises a family room featuring French doors, upgraded hardwood flooring and large windows with California shutters. Two bedrooms, an updated 3-piece bathroom with a glass shower and a laundry room complete this level. Secluded on the top floor is the spacious primary bedroom, with a walkout to a private balcony featuring glass-panel railings and verdant tree-top views. Textured glass French doors open to the luxurious 5-piece ensuite bath featuring a lavish oval freestanding soaker tub and a separate shower with a frameless glass enclosure. The lower level offers an office, a utility room, and an interior entry to the attached double garage.

Wonderfully appointed with California shutters throughout, crown mouldings, hardwood floors and upgraded tiles, two wood-burning fireplaces, two walkouts and deluxe appliances. Recent improvements include refaced kitchen cabinets, repainted main level (2026), refinished hardwood on the main level, second floor and primary bedroom (2025), primary ensuite vanity (2023), furnace and air conditioner (2024), and roof shingles replaced (2019)—ensuring both timeless style and peace of mind.



## SUNKEN FOYER

- Single entry door with leaded glass sidelights and a large Palladian transom
- Antique iron candle-style chandelier
- Elegant crown mouldings
- Upgraded stone-look floor tiles
- Spiral staircase with natural finished oak handrails and white pickets



## LIVING ROOM (21'2" X 12'5")

- Upgraded, refinished hardwood floor
- Elegant crown mouldings
- Corner wood-burning fireplace with a floor-to-ceiling ledgestone surround and accent pot light
- Full glass garden doors and an additional stationary panel to the massive private terrace

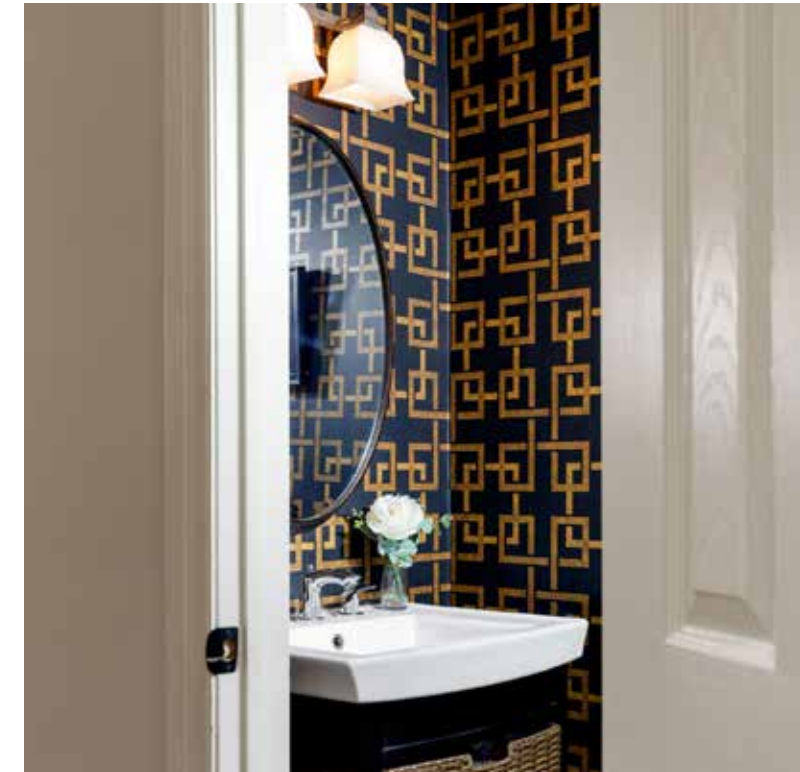


### DINING ROOM (13'11" X 10'9")

- Upgraded, refinished hardwood floor
- Elegant crown mouldings
- Ceiling medallion and upgraded chandelier
- Complimenting sconce lighting

### BATHROOM (2-PIECE)

- Dramatic designer wall coverings
- Upgraded cabinetry with a wicker drawer and lower display shelf
- One-piece vanity with an integrated sink and widespread faucet



## KITCHEN (18'6" X 10'2")

- Gorgeous, white refaced cabinetry (2026)
- Upper display cabinet with glass doors
- Several drawers, including pot drawers
- Deep double-door pantry
- Built-in china cabinets with glass doors in the breakfast area
- Granite counters and an upgraded subway tile backsplash
- Elegant crown mouldings
- Nine pot lights and a dish-style chandelier in the breakfast room
- Upgraded stone-look floor tiles
- Stainless steel appliances, including a French door fridge with a water/ice dispenser, produce drawer and freezer drawer, a slide-in gas range with a downdraft-style range hood fan, built-in dishwasher, and a microwave
- Large bay window with California shutters to the front yard





## FAMILY ROOM (17'4" X 12'0")

- French doors
- Upgraded, refinished hardwood floor installed on the diagonal
- Corner wood-burning fireplace with linear stone surround and a white painted wood mantel
- Two large windows with California shutters
- Upgraded ceiling fan
- Elegant crown mouldings
- Two pot lights





**BEDROOM 2 (10'7" X 10'1")**  
**BEDROOM 3 (10'1" X 10'1")**

- Two bright bedrooms on the second floor feature elegant crown mouldings, large windows with California shutters, ceiling light fixtures, ample closet space and neutral broadloom.



**BATHROOM (3-PIECE)**

**LAUNDRY ROOM (6'0" X 5'0")**

- Ceramic floor tiles
- Stacked full-size LG washer and dryer with a stainless steel finish



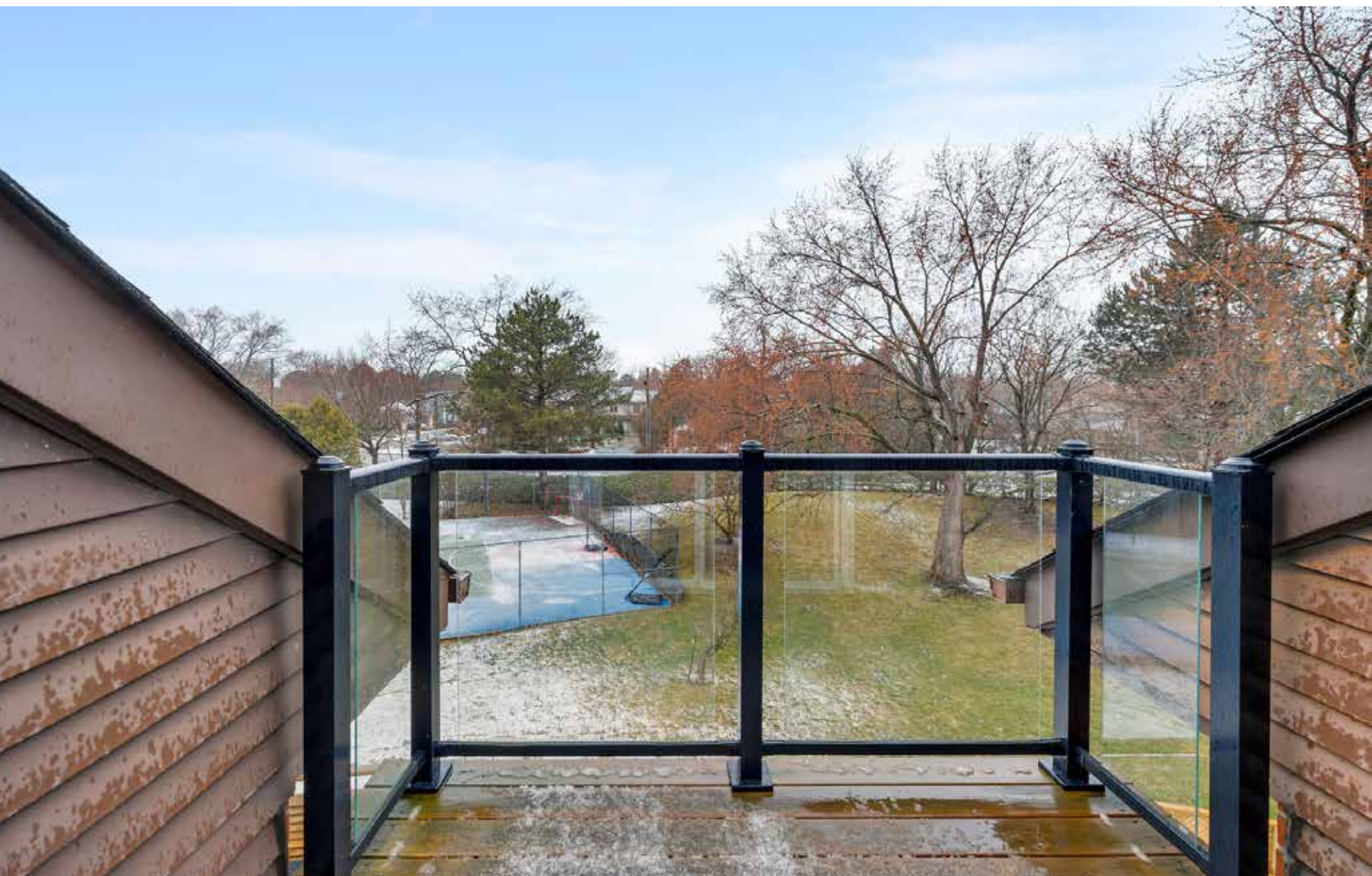


## PRIMARY BEDROOM (19'1" X 14'7")

- Upgraded, refinished hardwood floor
- Elegant crown mouldings
- Upgraded ceiling fan
- Two custom closets
- Skylight above the staircase.
- Curved open wall overlooks the staircase
- Sliding glass doors access the private balcony with glass panel railings overlooking the tennis court, spacious green area and towering mature trees

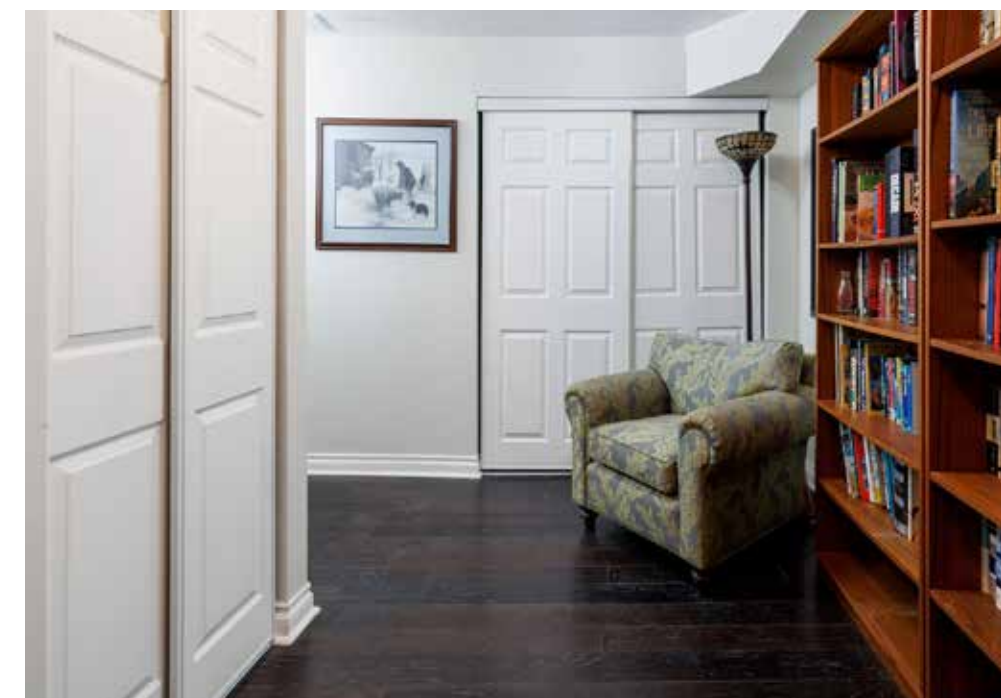
## BATHROOM (5-PIECE)

- Textured glass French doors
- Upgraded furniture-style white cabinetry with a centre bank of drawers and two large bottom drawers
- Stone counter with two under-mount sinks and upgraded single-lever faucets
- Large illuminated mirror with two pot lights above
- Elegant crown mouldings and deluxe wainscoting
- Stylish crystal ceiling lights
- Large window with California shutters
- Separate water closet for the upgraded toilet
- Neutral ceramic floor tiles
- Lavish solid one-piece freestanding oval soaker tub
- Separate large shower with neutral tile surround with a mosaic stone inlay, rain shower head, additional sliding shower diverter and frameless glass enclosure and door



### OFFICE (12'11" X 7'8")

- Wide plank engineered hardwood floor
- Track-style lighting
- Double closet with upgraded sliding doors
- Also, on this level is the utility room and an inside entry to the attached double garage



## SCHOOLS

### Elementary

Eastview – English Track – JK – GR08

Pine Grove – FI – GR02 – 08

St. Dominic CES – Regular Track – JK – GR08

St. Mary CES – FI – GR01 – 08

St. Nicholas CES – ExF – GR05 – 08

### Secondary

Thomas A. Blakelock – English Track/FI – GR09 – 12

St. Thomas Aquinas CSS – Regular Track/ExF – GR09 – 12

St. Ignatius of Loyola – FI – GR09 - 12



---

**Taxes:** \$7,629 (2025)

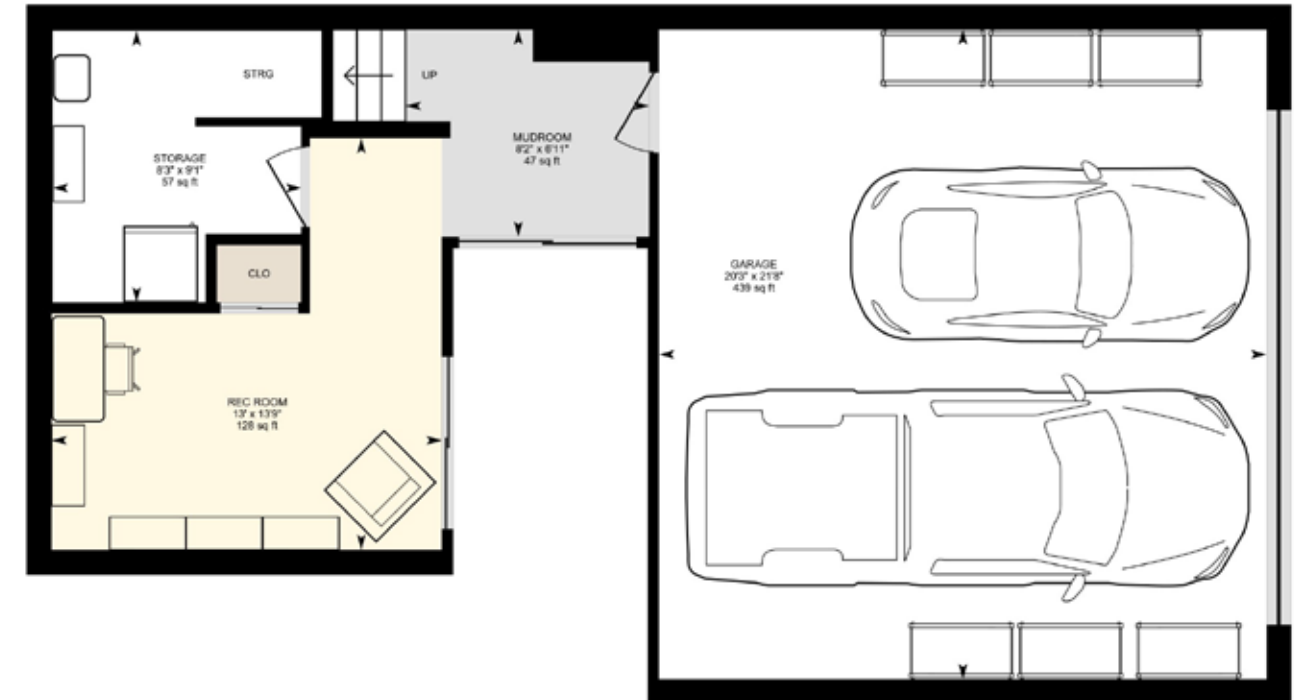
**Lot Size:** 11.6 x 119.97 Feet

**Inclusions:** Fridge, gas stove, built-in dishwasher, microwave, washer, dryer, all electric light fixtures, all window coverings, central vacuum and attachments, garage door opener and remote

**Common Elements:** \$150 monthly\*

\*Covers snow removal, grass cutting, and exterior window cleaning.

# FLOOR PLANS





**RINA DIRISIO**  
SALES REPRESENTATIVE  
LIFETIME RESIDENT OF OAKVILLE

**CELL 416.804.4347**  
**EMAIL RINA@RINA.CA**

251 NORTH SERVICE ROAD WEST, OAKVILLE ONTARIO L6M 3E7

Royal LePage Real Estate Services Ltd., Brokerage

# RINA.CA

## WE SELL REAL ESTATE BUT BETTER.



Information in this brochure is deemed accurate but not guaranteed.  
School boundaries may change for upcoming school year.