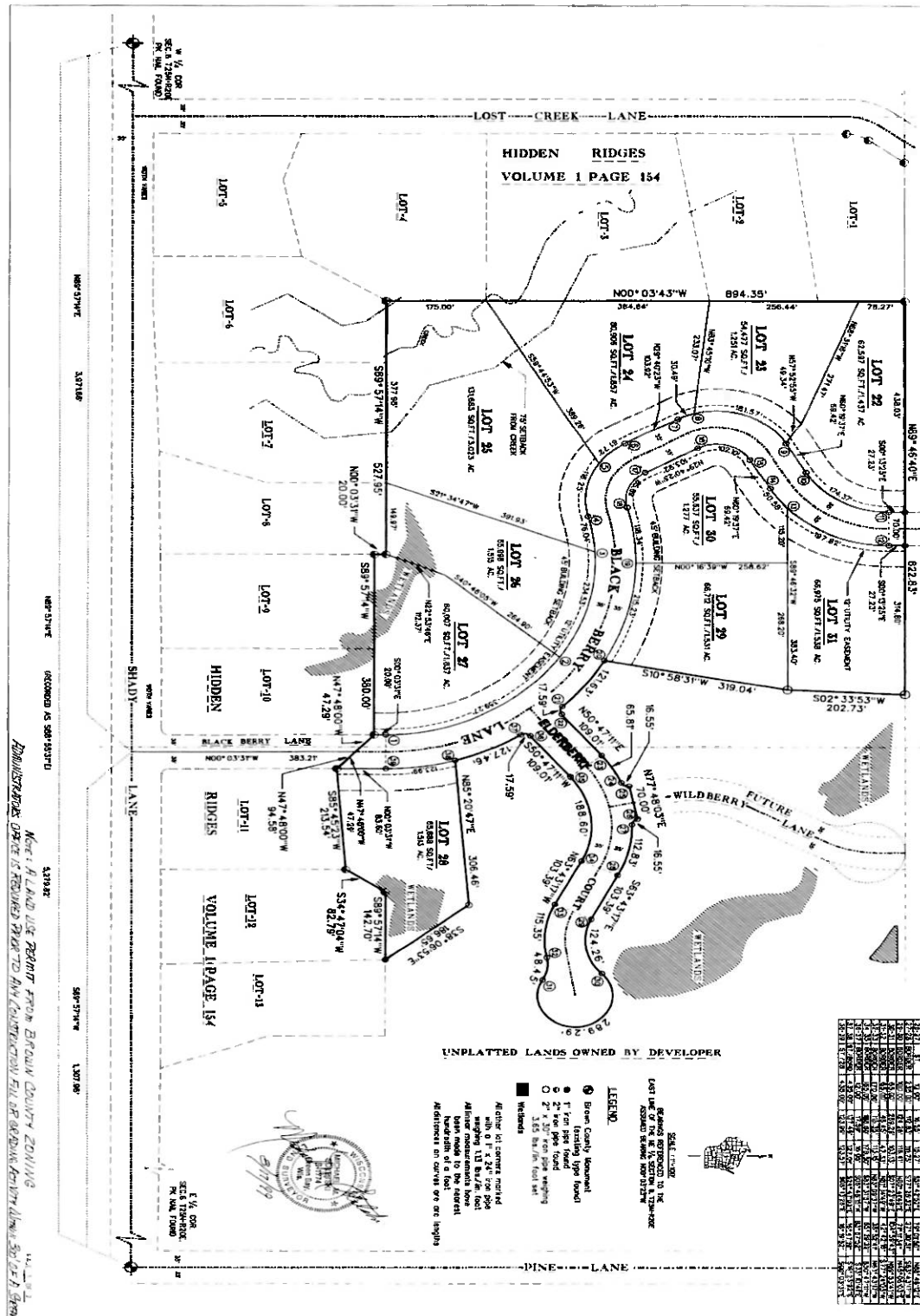


HIDDEN RIDGES II

A COUNTY PLAT
 PART OF THE SOUTHWEST 1/4-NORTHEAST 1/4 AND PART OF
 THE SOUTHEAST 1/4-NORTHEAST 1/4, SECTION 6, T25N-R20E,
 TOWN OF SUAMICO, BROWN COUNTY, WISCONSIN



LOT	ACRES	OWNER	STATUS	DATE	REMARKS
1	0.12
2	0.12
3	0.12
4	0.12
5	0.12
6	0.12
7	0.12
8	0.12
9	0.12
10	0.12
11	0.12
12	0.12
13	0.12
14	0.12
15	0.12
16	0.12
17	0.12
18	0.12
19	0.12
20	0.12
21	0.12
22	0.12
23	0.12
24	0.12
25	0.12
26	0.12
27	0.12
28	0.12
29	0.12
30	0.12
31	0.12

UNPLATTED LANDS OWNED BY DEVELOPER

- Been County (measured)
 - 1" iron pipe found
 - 2" iron pipe found
 - 2" x 20" iron pipe warning
 - 1.65 bar/ft. fuel set
 - Wetlands
- Active in corners marked with a 6" x 24" iron pipe weighing 113 lbs/ft. fuel. All other measurements from the corner. Handsets in corners. All distances in curves 90 or 270 degrees.



NOTE: A LAND USE PERMIT FROM BROWN COUNTY ZONING DEPARTMENT IS REQUIRED PRIOR TO ANY CONSTRUCTION OR ANY OTHER ACTIVITY ON THIS PLAT.

