

# B1

## FLOOR PLAN

**RESIDENCE TYPE:**

2 Bed + 2 Bath

**AVERAGE SIZE:**

Interior - 1,416 SF

Exterior - 97 SF

**EXPOSURE:**

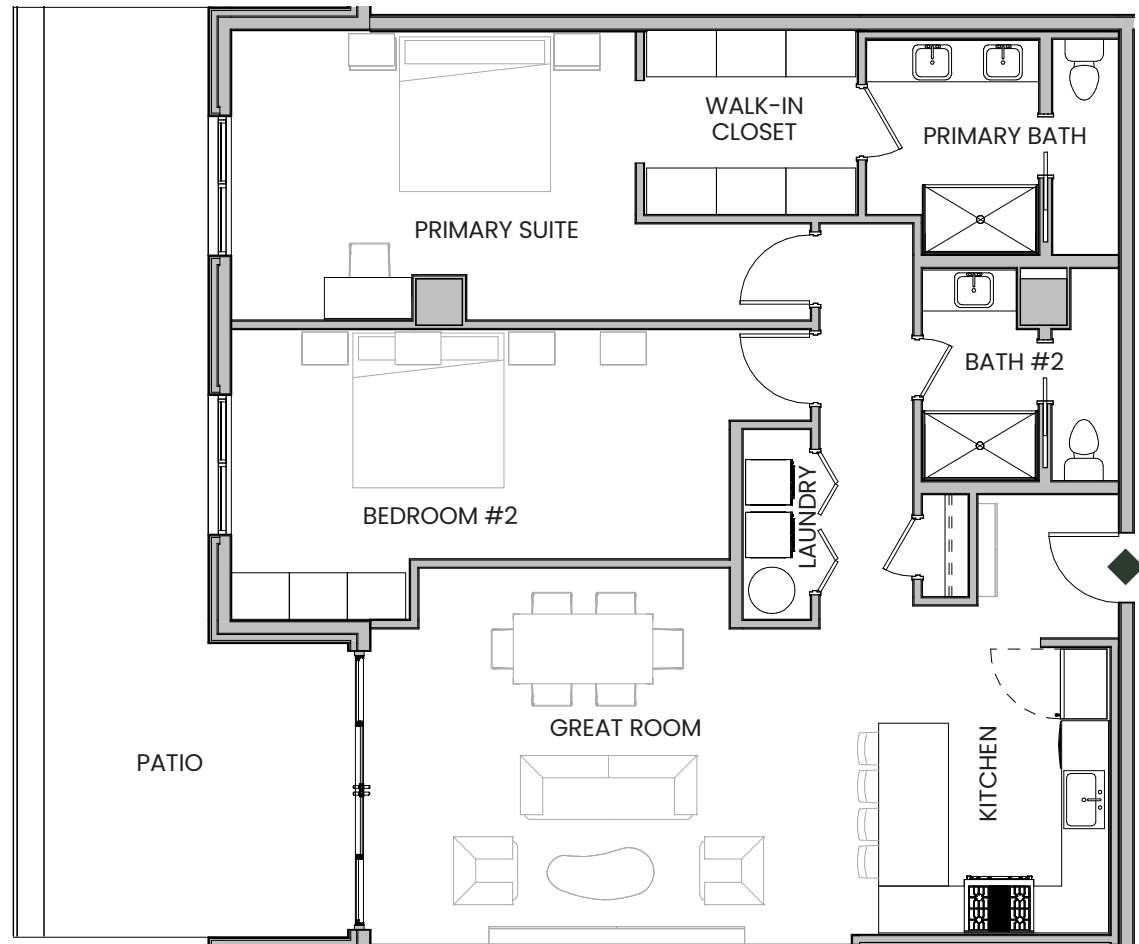
West

**FLOORS:**

3, 4, 5, 6, 7, & 8

**PRICE RANGE:**

\$1,359,360 - \$1,401,840



[www.LiveAtChurchill.com](http://www.LiveAtChurchill.com)



© All rights reserved. Changes and modifications to floor plans, materials, and specifications are currently in progress as full design is not complete. Please note that dimensions are approximate, and square footage may vary based on elevations specific to the plan and differences in exterior materials. Unit and customer-specific detailed drawings and specifications will be provided as part of the Building Agreement.

# B2

## FLOOR PLAN

**RESIDENCE TYPE:**

2 Bed + 2.5 Bath

**AVERAGE SIZE:**

Interior - 1,396 SF

Exterior - 92 SF

**EXPOSURE:**

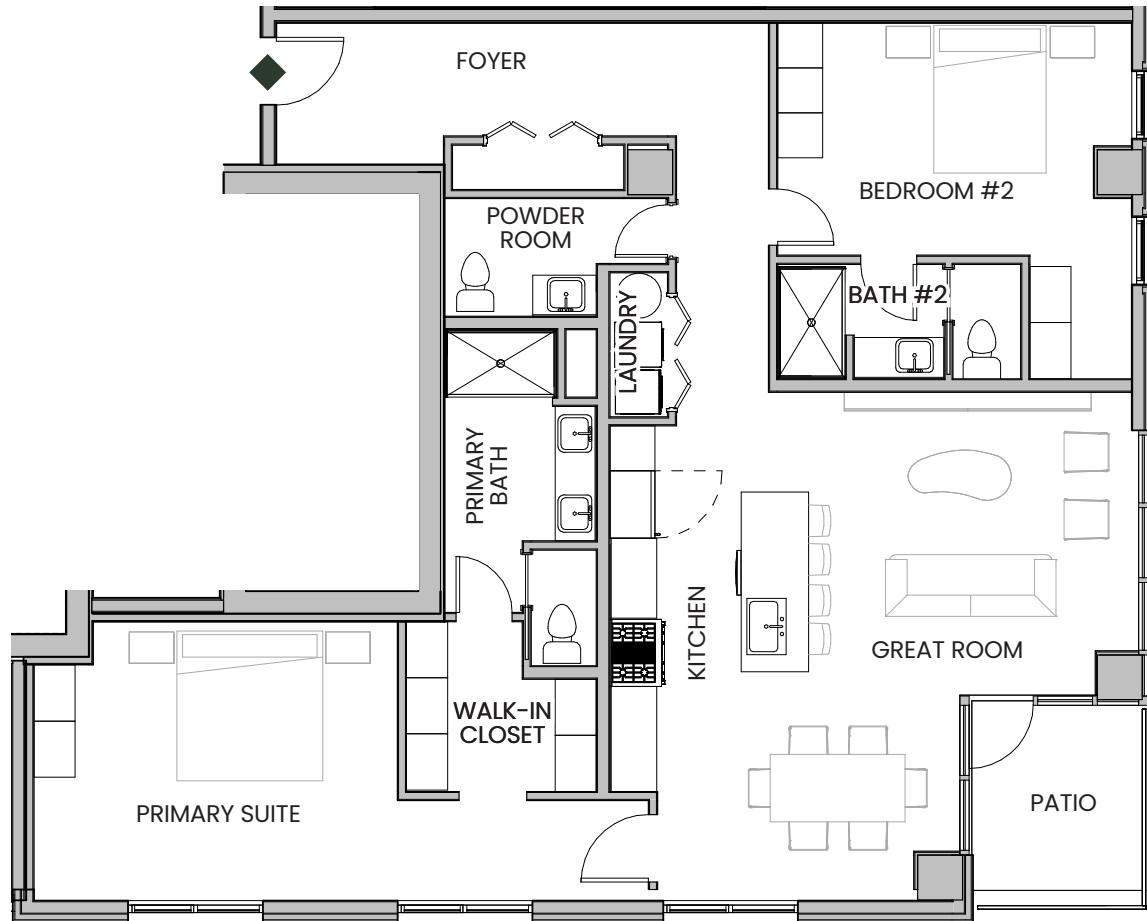
East & North

**FLOORS:**

3, 4, 5, 6, 7, & 8

**PRICE RANGE:**

\$1,331,520 - \$1,422,900



[www.LiveAtChurchill.com](http://www.LiveAtChurchill.com)



© All rights reserved. Changes and modifications to floor plans, materials, and specifications are currently in progress as full design is not complete. Please note that dimensions are approximate, and square footage may vary based on elevations specific to the plan and differences in exterior materials. Unit and customer-specific detailed drawings and specifications will be provided as part of the Building Agreement.



# B3

## FLOOR PLAN

**RESIDENCE TYPE:**

2 Bed + 2 Bath

**AVERAGE SIZE:**

Interior - 1,248 SF

Exterior - 72 SF

**EXPOSURE:**

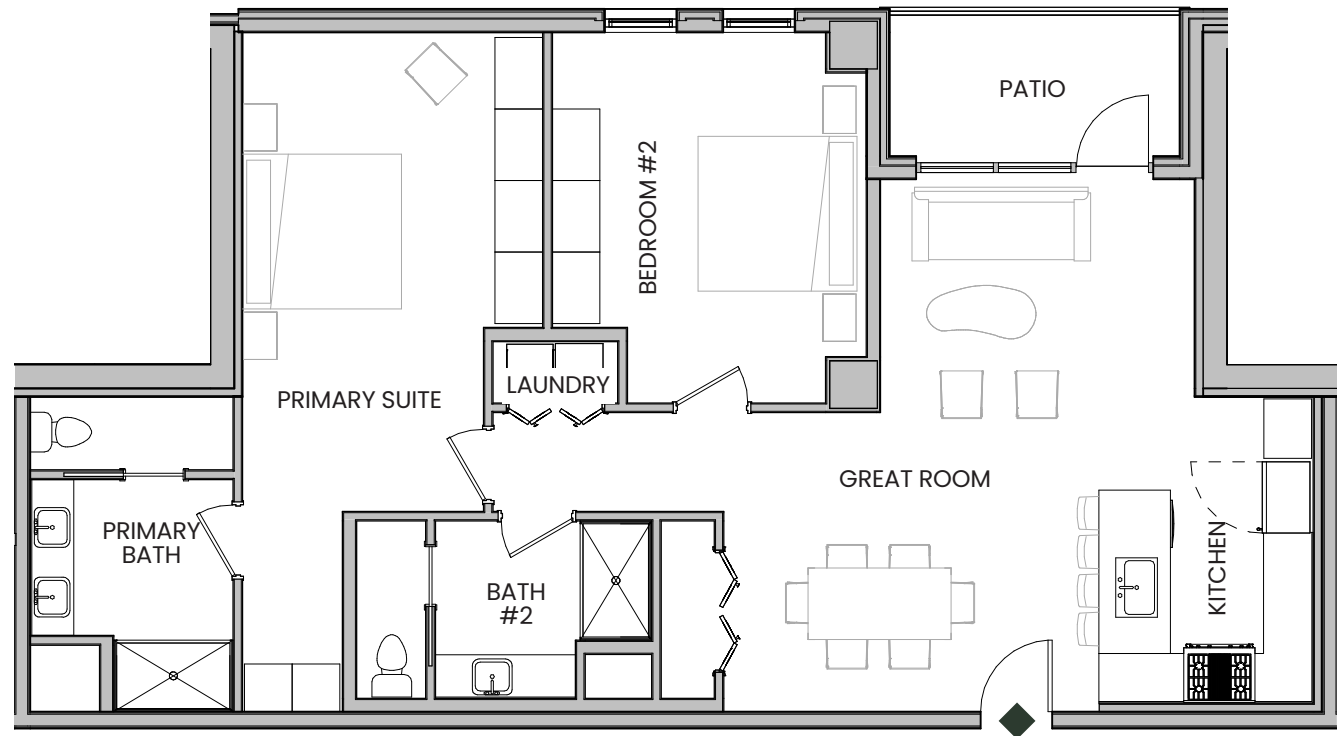
East

**FLOORS:**

5, 6, 7, & 8

**PRICE RANGE:**

\$1,192,320 - \$1,552,500



[www.LiveAtChurchill.com](http://www.LiveAtChurchill.com)



© All rights reserved. Changes and modifications to floor plans, materials, and specifications are currently in progress as full design is not complete. Please note that dimensions are approximate, and square footage may vary based on elevations specific to the plan and differences in exterior materials. Unit and customer-specific detailed drawings and specifications will be provided as part of the Building Agreement.

# B4

## FLOOR PLAN

### RESIDENCE TYPE:

2 Bed + 2.5 Bath

### AVERAGE SIZE:

Interior - 1,456 SF

Exterior - 87 SF

### EXPOSURE:

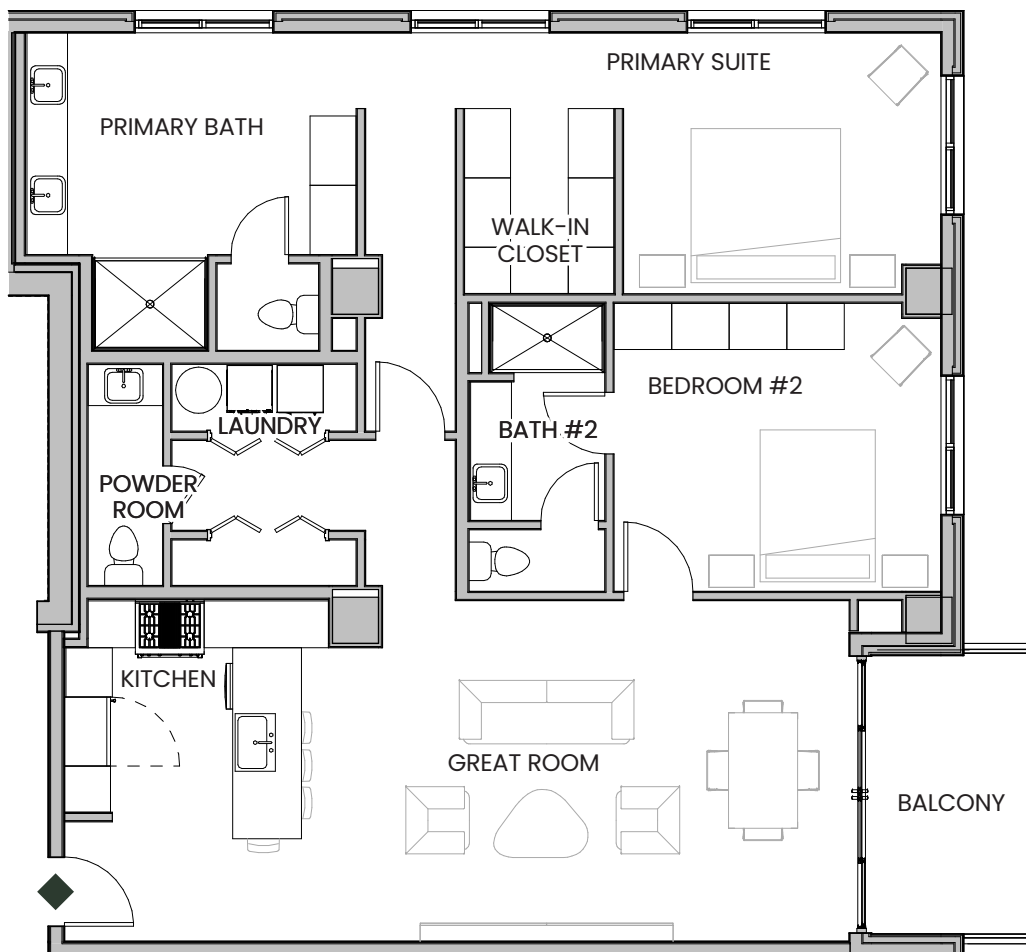
East & South

### FLOORS:

3 & 4

### PRICE RANGE:

\$1,397,760 - \$1,419,600



[www.LiveAtChurchill.com](http://www.LiveAtChurchill.com)



© All rights reserved. Changes and modifications to floor plans, materials, and specifications are currently in progress as full design is not complete. Please note that dimensions are approximate, and square footage may vary based on elevations specific to the plan and differences in exterior materials. Unit and customer-specific detailed drawings and specifications will be provided as part of the Building Agreement.



# B5

## FLOOR PLAN

### RESIDENCE TYPE:

2 Bed + 2.5 Bath

### AVERAGE SIZE:

Interior - 1,615 SF

Exterior - 389 SF

### EXPOSURE:

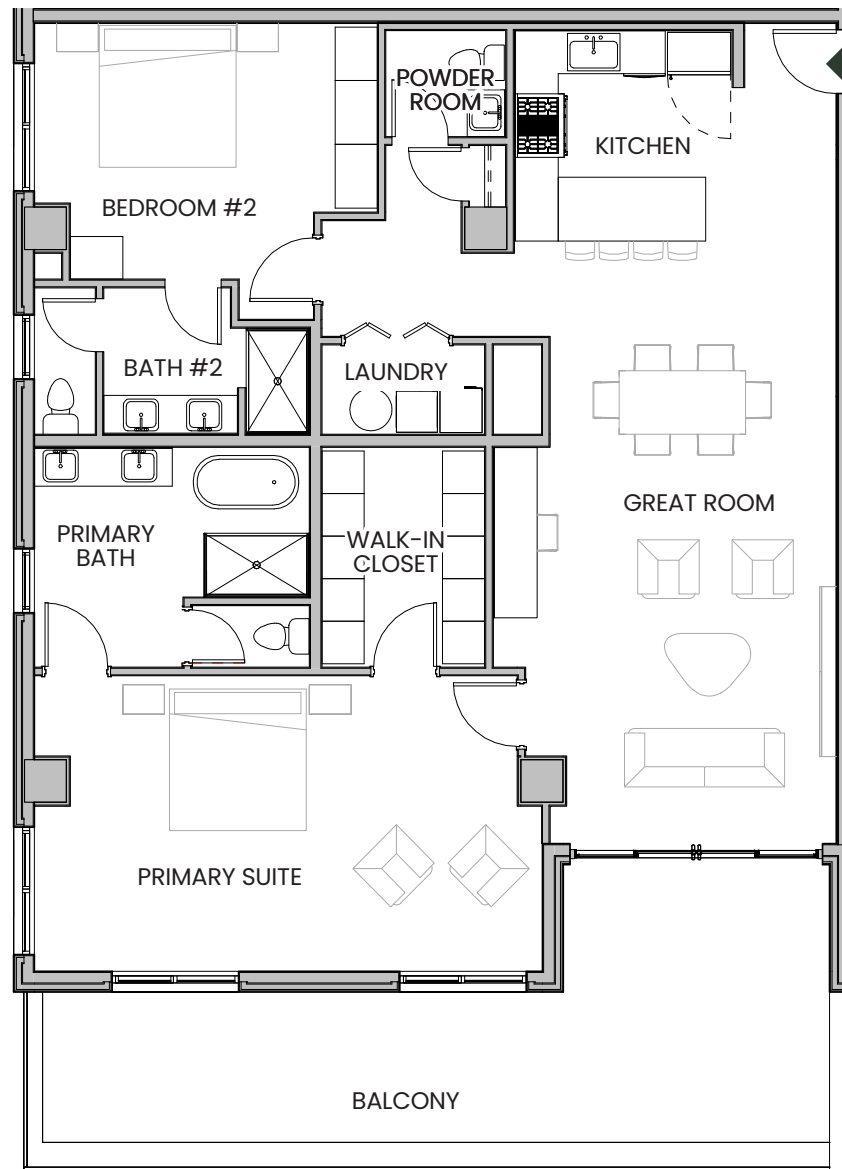
North & West

### FLOORS:

3, 4, 5, 6, 7, & 8

### PRICE RANGE:

\$1,582,700 - \$1,647,300



[www.LiveAtChurchill.com](http://www.LiveAtChurchill.com)



© All rights reserved. Changes and modifications to floor plans, materials, and specifications are currently in progress as full design is not complete. Please note that dimensions are approximate, and square footage may vary based on elevations specific to the plan and differences in exterior materials. Unit and customer-specific detailed drawings and specifications will be provided as part of the Building Agreement.

# B6

## FLOOR PLAN

### RESIDENCE TYPE:

2 Bed + 2.5 Bath

### AVERAGE SIZE:

Interior - 1,592 SF

Exterior - 399 SF

### EXPOSURE:

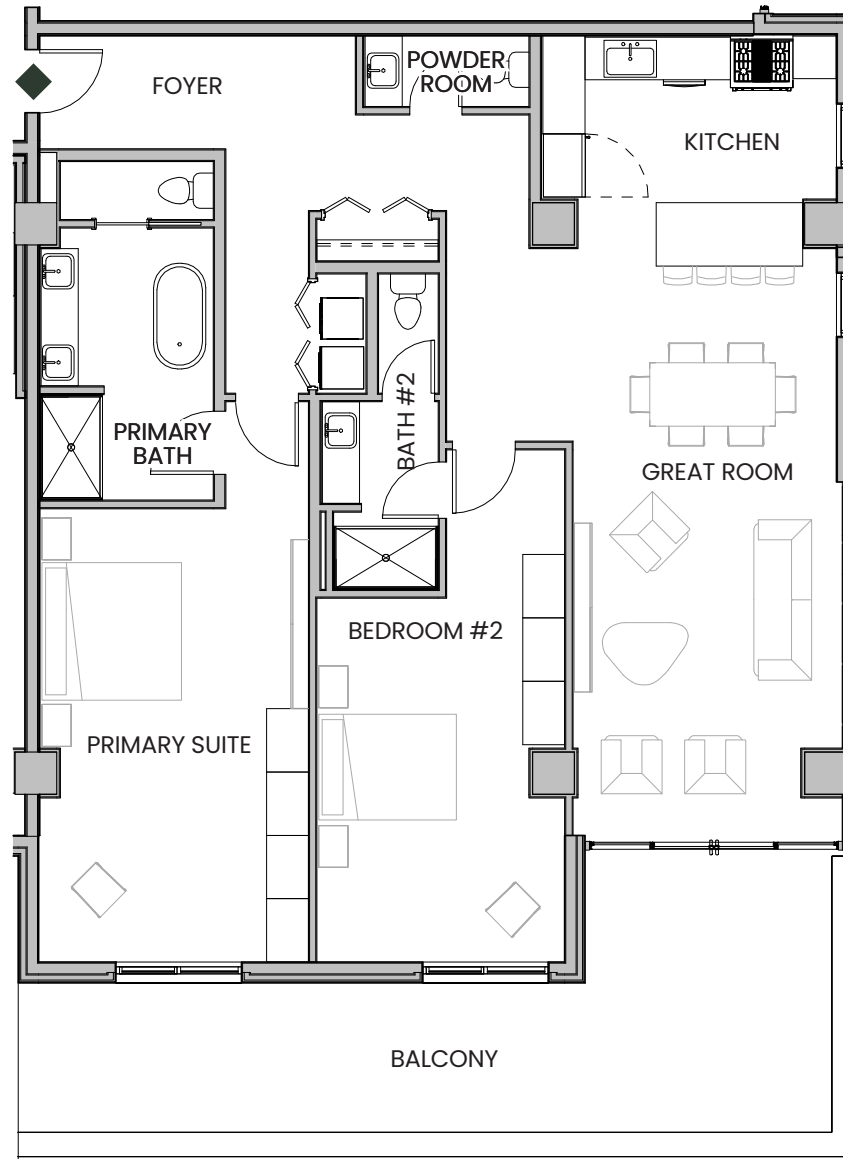
South & West

### FLOORS:

3 & 4

### PRICE RANGE:

\$1,560,160 - \$1,592,000



[www.LiveAtChurchill.com](http://www.LiveAtChurchill.com)



© All rights reserved. Changes and modifications to floor plans, materials, and specifications are currently in progress as full design is not complete. Please note that dimensions are approximate, and square footage may vary based on elevations specific to the plan and differences in exterior materials. Unit and customer-specific detailed drawings and specifications will be provided as part of the Building Agreement.



# B7

## FLOOR PLAN

### RESIDENCE TYPE:

2 Bed + 2 Bath

### AVERAGE SIZE:

Interior - 1,416 SF

Exterior - 405 SF

### EXPOSURE:

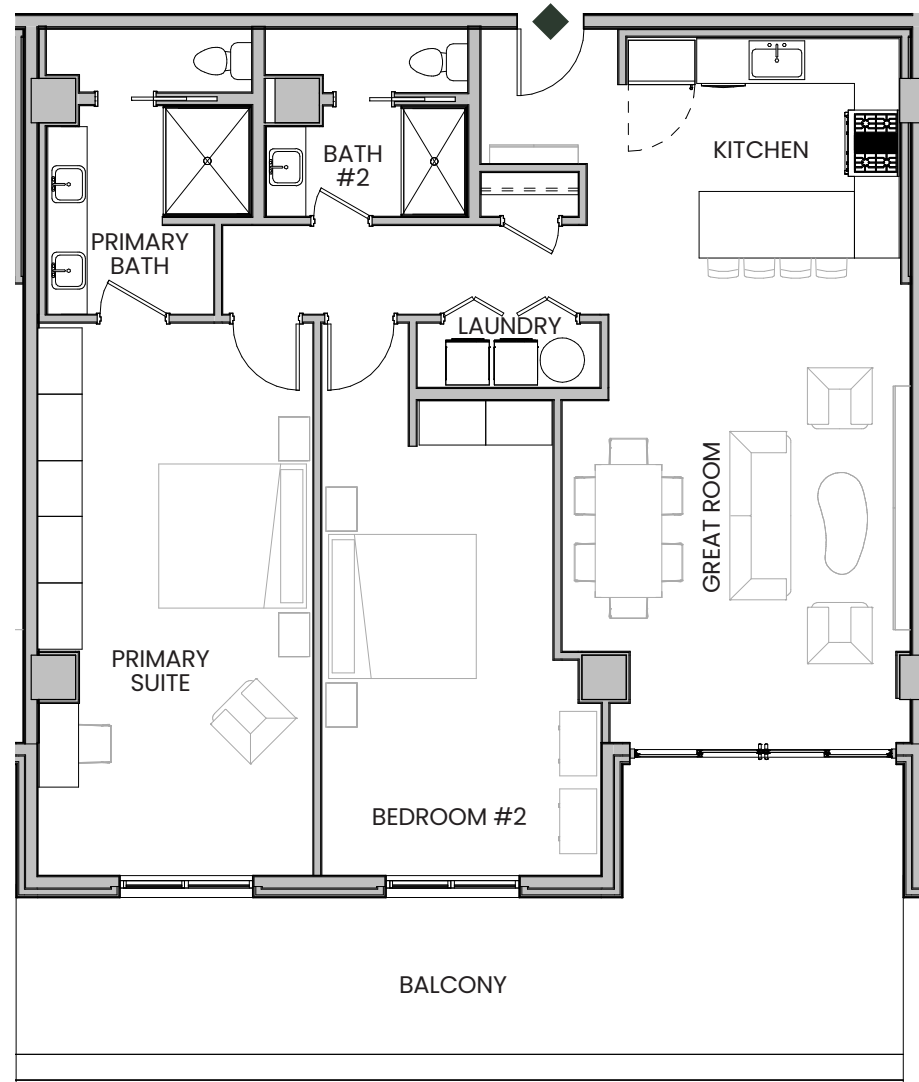
West

### FLOORS:

3, 4, 5, 6, 7, & 8

### PRICE RANGE:

\$1,359,360 - \$1,473,680



[www.LiveAtChurchill.com](http://www.LiveAtChurchill.com)



© All rights reserved. Changes and modifications to floor plans, materials, and specifications are currently in progress as full design is not complete. Please note that dimensions are approximate, and square footage may vary based on elevations specific to the plan and differences in exterior materials. Unit and customer-specific detailed drawings and specifications will be provided as part of the Building Agreement.

# B8

## FLOOR PLAN

**RESIDENCE TYPE:**

2 Bed + 2 Bath

**AVERAGE SIZE:**

Interior - 1,289 SF

Exterior - 126 SF

**EXPOSURE:**

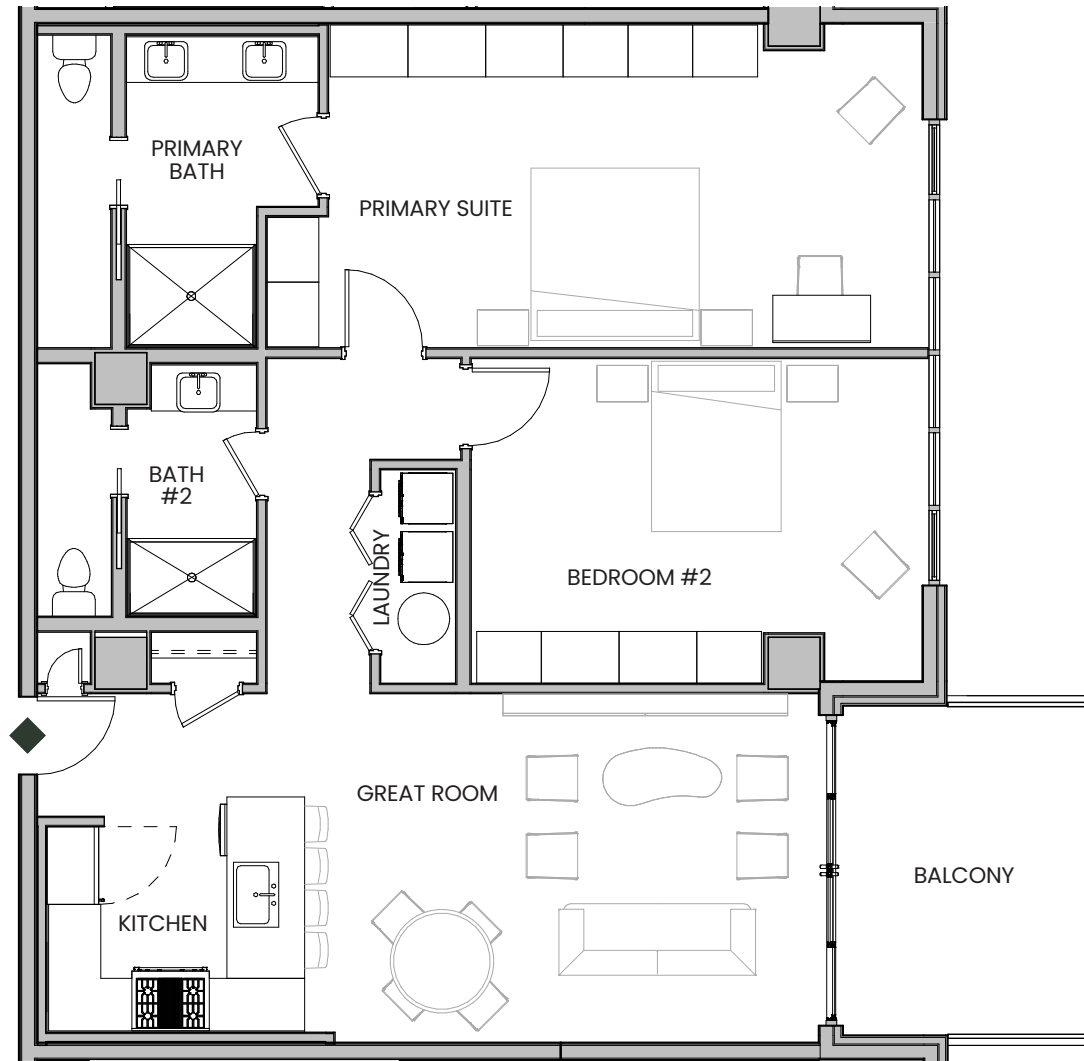
West

**FLOORS:**

9

**PRICE RANGE:**

\$1,740,150



[www.LiveAtChurchill.com](http://www.LiveAtChurchill.com)



© All rights reserved. Changes and modifications to floor plans, materials, and specifications are currently in progress as full design is not complete. Please note that dimensions are approximate, and square footage may vary based on elevations specific to the plan and differences in exterior materials. Unit and customer-specific detailed drawings and specifications will be provided as part of the Building Agreement.



# B9

## FLOOR PLAN

### RESIDENCE TYPE:

2 Bed + 2 Bath

### AVERAGE SIZE:

Interior - 2,012 SF

### EXPOSURE:

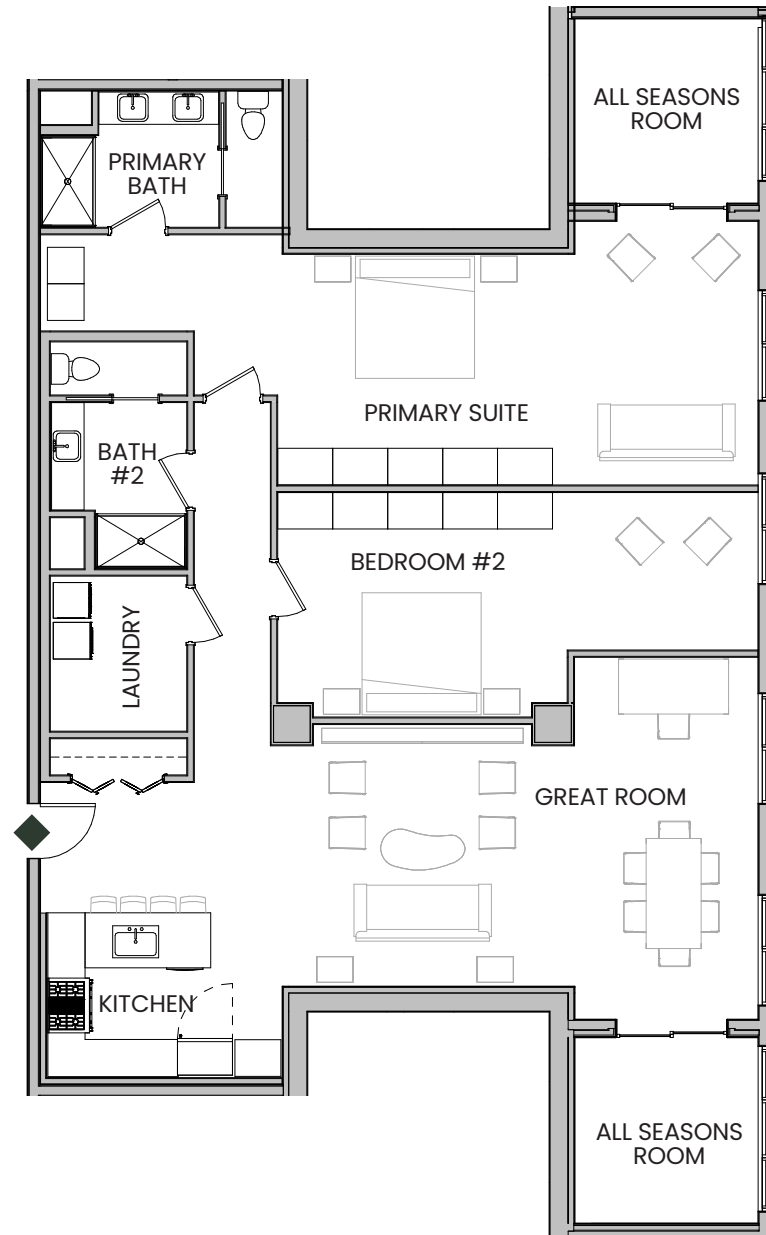
East

### FLOORS:

3

### PRICE RANGE:

\$1,911,400



[www.LiveAtChurchill.com](http://www.LiveAtChurchill.com)



© All rights reserved. Changes and modifications to floor plans, materials, and specifications are currently in progress as full design is not complete. Please note that dimensions are approximate, and square footage may vary based on elevations specific to the plan and differences in exterior materials. Unit and customer-specific detailed drawings and specifications will be provided as part of the Building Agreement.

# C1

## FLOOR PLAN

**RESIDENCE TYPE:**

3 Bed + 3.5 Bath

**AVERAGE SIZE:**

Interior - 2,333 SF

Exterior - 304 SF

**EXPOSURE:**

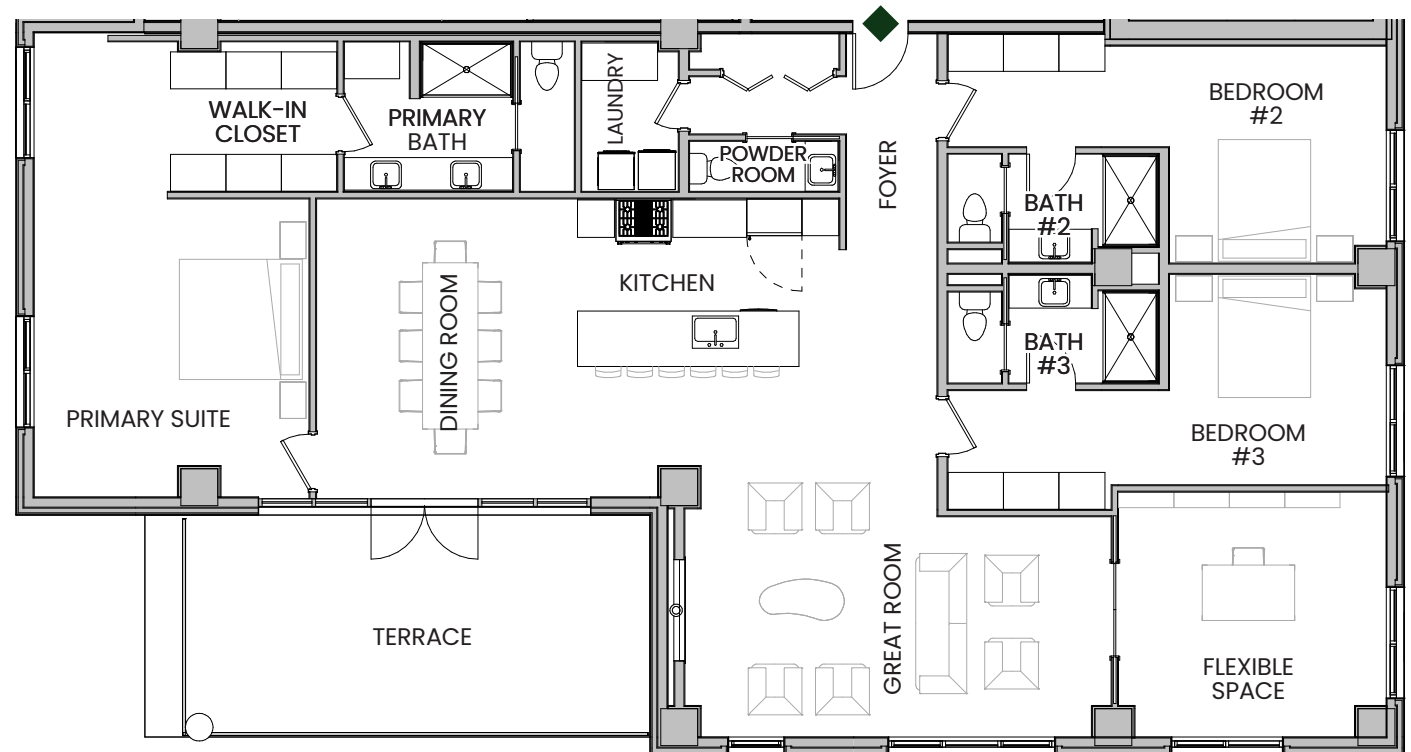
East, South, & West

**FLOORS:**

5, 6, 7, & 8

**PRICE RANGE:**

\$2,449,650 - \$3,009,570



[www.LiveAtChurchill.com](http://www.LiveAtChurchill.com)



© All rights reserved. Changes and modifications to floor plans, materials, and specifications are currently in progress as full design is not complete. Please note that dimensions are approximate, and square footage may vary based on elevations specific to the plan and differences in exterior materials. Unit and customer-specific detailed drawings and specifications will be provided as part of the Building Agreement.



# C2

## FLOOR PLAN

### RESIDENCE TYPE:

3 Bed + 3 Bath

### AVERAGE SIZE:

Interior - 2,154 SF

Exterior - 947 SF

### EXPOSURE:

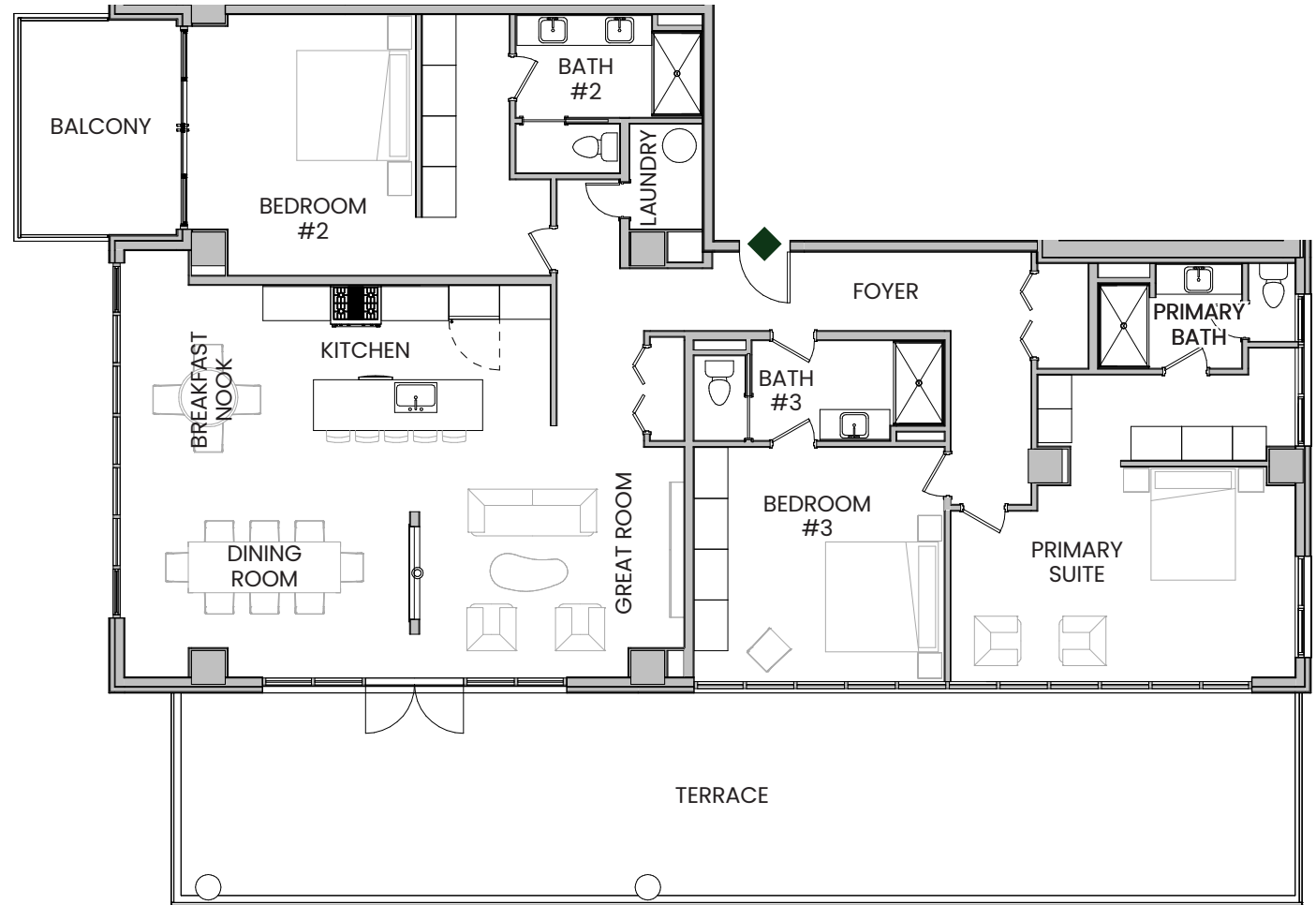
East, South, & West

### FLOORS:

9 & 10

### PRICE RANGE:

\$3,177,150 - \$3,231,000



[www.LiveAtChurchill.com](http://www.LiveAtChurchill.com)



© All rights reserved. Changes and modifications to floor plans, materials, and specifications are currently in progress as full design is not complete. Please note that dimensions are approximate, and square footage may vary based on elevations specific to the plan and differences in exterior materials. Unit and customer-specific detailed drawings and specifications will be provided as part of the Building Agreement.

# C3

## FLOOR PLAN

### RESIDENCE TYPE:

3 Bed + 3.5 Bath

### AVERAGE SIZE:

Interior - 2,398 SF

Exterior - 1,597 SF (Shown\*);

743 SF

### EXPOSURE:

East, North, & West

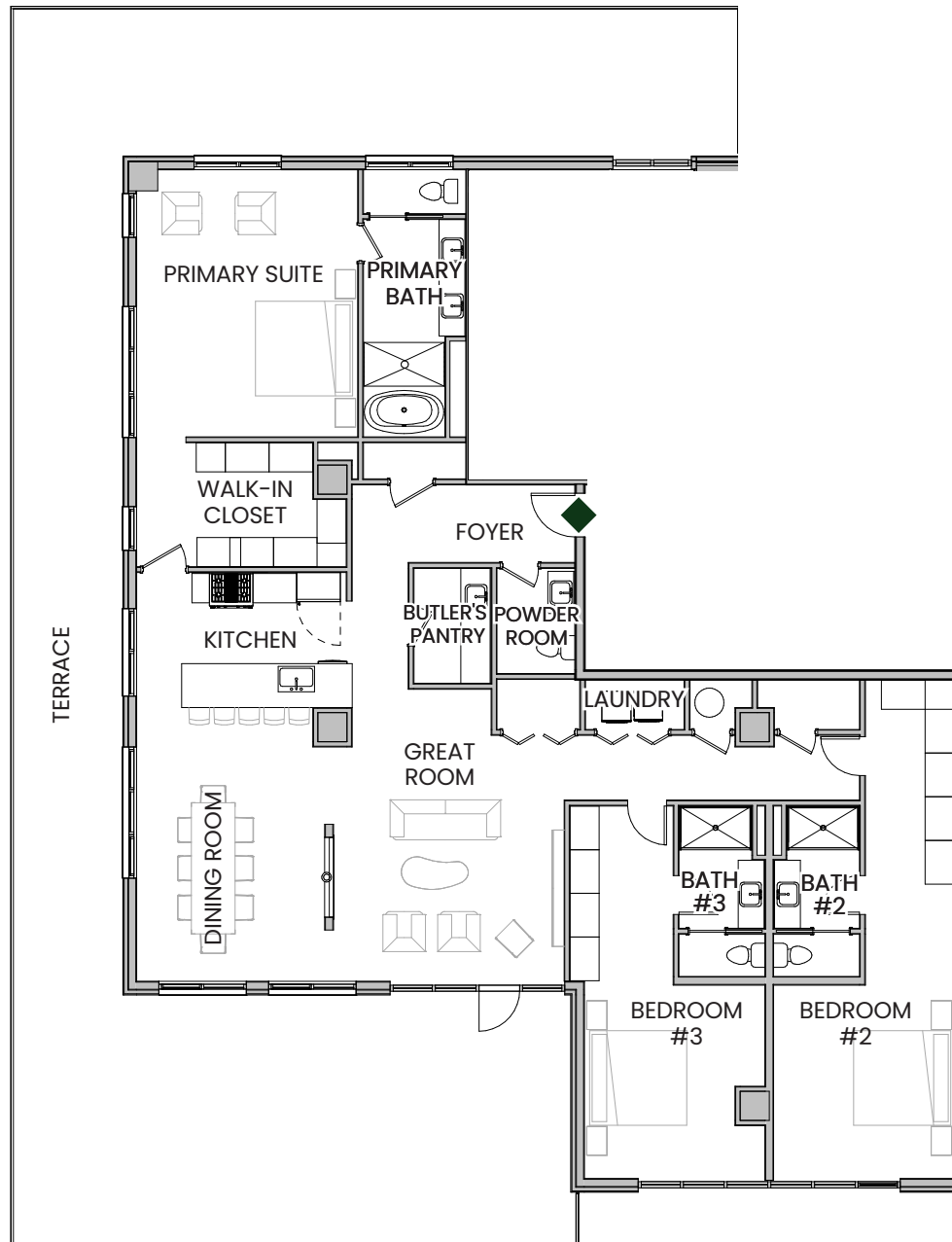
### FLOORS:

9 & 10

### PRICE RANGE:

\$3,357,200 - \$ 3,474,200

[www.LiveAtChurchill.com](http://www.LiveAtChurchill.com)



© All rights reserved. Changes and modifications to floor plans, materials, and specifications are currently in progress as full design is not complete. Please note that dimensions are approximate, and square footage may vary based on elevations specific to the plan and differences in exterior materials. Unit and customer-specific detailed drawings and specifications will be provided as part of the Building Agreement.