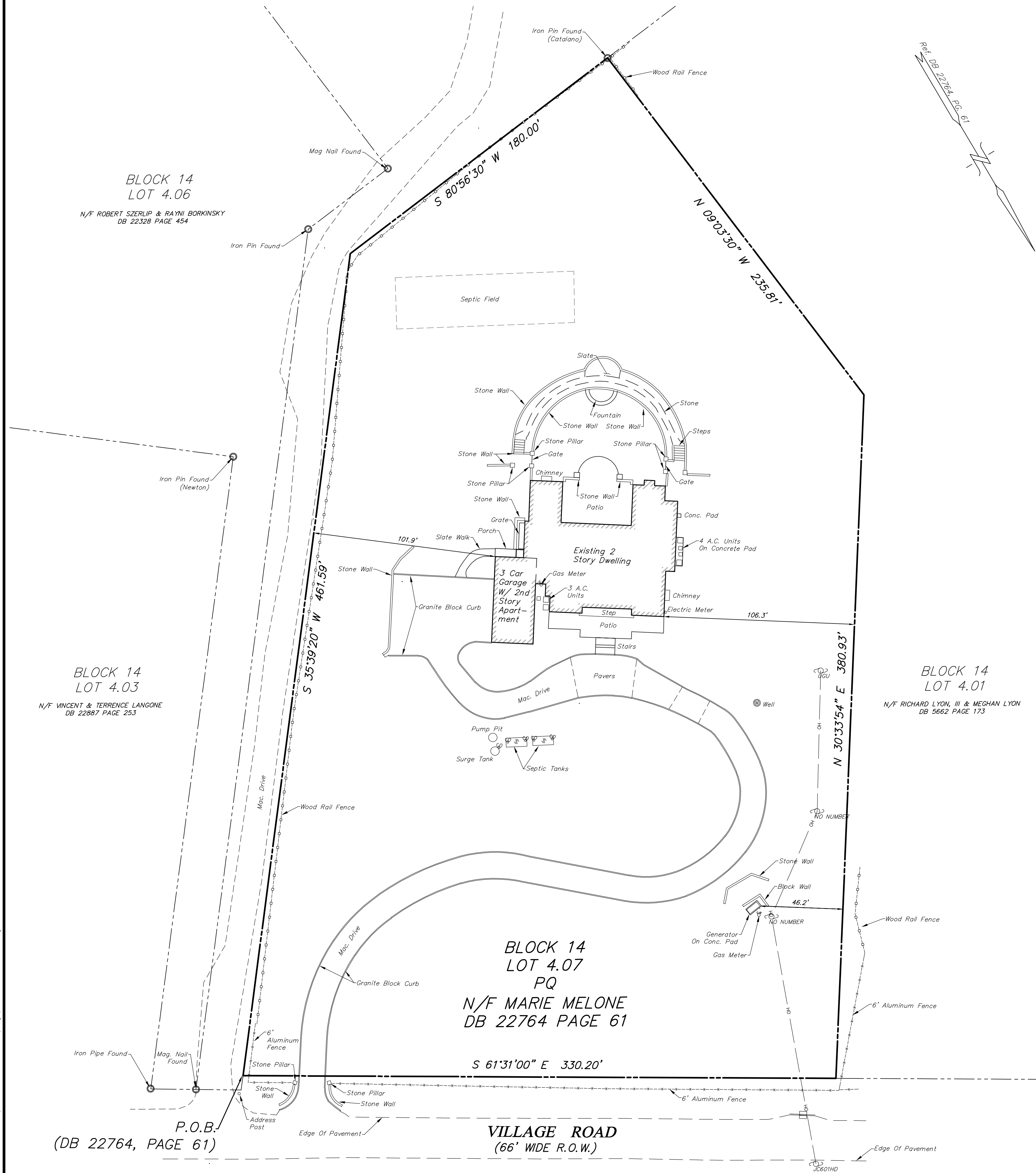


F:\Projects\VC4-Misc-CHH\2201HAR - Zuckert\DWG\2201HAR-SURVEY.dwg



GENERAL SURVEY NOTES:

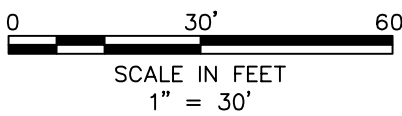
- PROPERTY KNOWN AS LOT 4.07 IN BLOCK 14 AS SHOWN ON THE TAX MAP OF THE TOWNSHIP OF HARDING, MORRIS COUNTY, NEW JERSEY, SHEET NO. 8.
- GROSS LOT AREA = 3.486 ACRES.
- THE LOCATION OF UNDERGROUND UTILITIES SHOWN ON THIS SURVEY ARE BASED UPON THE LOCATION OF AT GRADE UTILITIES AND MARK-OUT BY OTHERS. NOT ALL UTILITIES, INCLUDING THOSE ABANDONED OR NOT IN SERVICE, MAY BE SHOWN. BEFORE ANY EXCAVATION IS TO BEGIN, ALL UNDERGROUND UTILITIES SHOULD BE VERIFIED AS TO LOCATION, SIZE AND TYPE BY THE PROPER UTILITY COMPANIES.
- BOUNDARY INFORMATION SHOWN IS BASED UPON AN ON GROUND FIELD SURVEY PERFORMED BY VAN CLEEF ENGINEERING ASSOCIATES FIELD PERSONNEL ON MAY 27, 2022 AND REFERENCE MATERIAL LISTED HEREON.
- THE HORIZONTAL DATUM IS BASED UPON REFERENCE #3.

SURVEY REFERENCES:

- TAX MAPS FOR HARDING TOWNSHIP, MORRIS COUNTY, NEW JERSEY, SHEET NO. 8.
- PLAN ENTITLED "DISPOSAL SYSTEM RECORD PLAN" PREPARED BY VAN CLEEF ENGINEERING ASSOCIATES, DATED 7/15/1999 AND REVISED 7/23/1999.
- VESTING DEED FOR BLOCK 14, LOT 4.07 FOUND IN DEED BOOK 22764 PAGE 61 AND FILED WITH THE MORRIS COUNTY CLERKS OFFICE.

LEGEND:

| | | | |
|-----------------------|-------------------------|---------------------------|-----------------------------|
| IRON FOUND | GAS MANHOLE | TELEPHONE/COMMUN. MANHOLE | OVERHEAD LINE |
| MONUMENT FOUND | GAS VALVE | TELEPHONE BOX | ELECTRIC LINE - UNDERGROUND |
| BOLLARD | GAS METER | TELEVISION/CABLE BOX | GAS LINE |
| FLAG POLE | OIL FILL | WATER METER | GAS SERVICE LINE |
| MAIL BOX | STATE HIGHWAY DEPT. | WATER VALVE | SANITARY SEWER LINE |
| SIGN | STATE HIGHWAY DEPT. | WATER MANHOLE | SANITARY SEWER SERVICE LINE |
| STREET SIGN | DEPT. OF TRANSPORTATION | WELL | STORM LINE |
| UTILITY POLE | SANITARY SEWER MANHOLE | FIRE HYDRANT | TELEPHONE LINE |
| GUY WIRE | CLEAN OUT | FIRE DEPT. CONNECTION | TELEVISION/CABLE LINE |
| ELECTRIC BOX | STORM INLET TYPE B | DEPRESSED CURB | WATER LINE |
| ELECTRIC MANHOLE | STORM INLET TYPE A/E | CURB LINE | WATER SERVICE LINE |
| UTILITY POLE W/ LIGHT | STORM MANHOLE | EDGE OF PAVEMENT | CONTOUR LINE |
| LIGHT POLE | ROOF LEADER | MONITOR WELL | SPOT ELEVATION |
| TRAFFIC LIGHT | | | |
| JUNCTION BOX | | | |



| | | | |
|---|-------|------|---------------------|
| | | | DATE: JUNE 15, 2022 |
| | | | SCALE: 1"=30' |
| | | | DESIGNED BY: NMM |
| | | | DRAWN BY: DMV/JVB |
| | | | CHECKED BY: CMH |
| REVISIONS | AUTH. | DATE | JOB NO. 2201HAR |
| <div>Carl M. Herrman</div> <div>Carl M. Herrman, P.L.S.</div> <div>Professional Land Surveyor, New Jersey Lic. No. GS-42271</div> | | | |

Van Cleef
ENGINEERING ASSOCIATES, LLC

755 MEMORIAL PARKWAY, SUITE 110 PHILIPSBURG, NJ 08865
EMAIL: CONTACTUS@VANCLEEFENGINEERING.COM
WEB: WWW.VANCLEEFENGINEERING.COM
PHONE (908) 454-3000 FAX (908) 454-1397

With Offices in New Jersey, Pennsylvania & Delaware

Consulting Civil Engineering
Bridge Design
Highway Design
Construction Inspection
Geotechnical Engineering
Water / Wastewater
Municipal Engineering
Land Surveying
Professional Planning
Landscape Architecture
NJ LLC CERT. No. 24GA2813200

AS-BUILT SURVEY
FOR
BLOCK 14, LOT 4.07
SITUATED IN THE
HARDING TOWNSHIP
MORRIS COUNTY, NEW JERSEY