

coastline, a 13-car garage and an infinity pool and spa, that is listed for \$75,000 a month. A glass-clad Malibu Road house **Kim Cattrall's** character called home in the *Sex and the City* movie is available for \$100,000. And **David Charvet** and **Brooke Burke** have listed their six-bedroom Italianate residence in Serra Retreat at \$50,000 a month.

Perhaps the most expensive is a 7-acre estate that was featured in *Funny People* and was home to **Evan Rachel Wood's** *True Blood* character. Known as La Villa Contenta, the Pacific Coast Highway property near Latigo Canyon still is available at a stunning \$350,000 a month.

Even at that price, the rates are a bargain compared with the other summer bastion of the well-heeled: the Hamptons, where ultra-luxury rental home rates can run \$500,000 a month and even top \$1 million.

"I think the [Malibu] prices are really attractive," says Coldwell Banker's **Chris Cortazzo**. "With the new Nobu and Mr Chow, Malibu now is a year-round destination, and people who ordinarily went to the Hamptons come here for a different lifestyle."

The demand is high enough that some developers even are building houses with an eye primarily on short-term renting. That's the idea behind architect **Michael Sant's** nearly completed three-bedroom home on a hilltop off Saddle Peak Road that he plans to lease for \$25,000 a month this summer.

"There's sort of a new category

emerging of architecture for rent," he says. "People that really like design and travel are realizing that in their vacation rental they can find high-level taste in the place they want to be."

Rental interest is so high that peer-to-peer leasing websites such as Airbnb and Vacation Rentals by Owner have been doing booming business, even in the luxury market. A recent look at the Airbnb site revealed more than 100 rentals ranging from \$65 to nearly \$2,000 a night in the area.

Not everyone is happy about it. In May, the Malibu City Council — spurred partly by complaints from neighbors of some of the busiest Airbnb rentals — authorized officials to subpoena the online companies for the names of homeowners on the sites to ensure they pay their proper short-term rental taxes. The city has only 55 homes registered to handle rentals of 30 days or less.

If the move is successful, says Hildebrand, owners might be less willing to rent short-term. "They are going to want a longer-term tenant than a shorter-term so they'll hike their prices to absorb the tax."

But agents don't fear that further inflating prices will pose any threat to the market activity. People looking to rent in Malibu already know the most important rule.

Says Hilton & Hyland agent **Chad Rogers**, "If you want paradise, you need to pay for it — especially in the 'Bu." **THR**



A One Gun Ranch ready-to-pick produce box.

CONTINUED FROM PAGE 83

cus of receiving its own American Viticulture Area appellation — a distinction reserved for geographic areas where a combination of factors (earth, climate, topography) is characteristic to the region's wine. The new appellation will predominantly cover the Santa Monica Mountains, extending to area wineries including **CORNELL WINERY & TASTING ROOM** (29975 Mulholland Highway) and **MALIBU FAMILY WINES** (31740 Mulholland Highway). Vintages from Dolin Malibu Estate Vineyard — founded by former electric-bass musician Elliott Dolin, who played with Manhattan Transfer — are served at local restaurants such as Gravina, Nikita and Tra di Noi (a favorite Italian spot of record producer and resident David Foster).

NO. 13 Burgers and Beer

For a low-key local vibe, head to Point Dume for **OLLIE'S DUCK & DIVE** (29169 Heathercliff Road, Suite 102), a casual gastropub that opened its doors in 2013. It's a favorite of the town's 29-year-old mayor, Skylar Peak.

WHERE TO STAY

NO. 14 \$6,500 for a Wellness Week

For total Malibu immersion — and a beach-body crash course — head to the exclusive **RANCH AT LIVE OAK** (12220 Cotharin Road) in the Santa Monica Mountains. Six guests are admitted to the fitness and wellness program each week, which includes plush accommodations, daily hikes, tough workout sessions and well-earned private massages. A seven-day program will set you back \$6,500. For weekend getaways, David Geffen's posh oceanfront

MALIBU BEACH INN (22878 PCH) is the area's hands-down choice, with standard room rates starting at \$675 during the summer. Visitors will have one more option to look forward to, with the renovation of the property formerly known as Casa Malibu Inn, which was purchased by Larry Ellison in 2007. Architecture and design firm Studio PCH — the same company that designed Nobu Malibu — has been tapped to oversee the 16-room, Japanese-inspired project.



Ellison



Crawford

WHERE TO WORK OUT

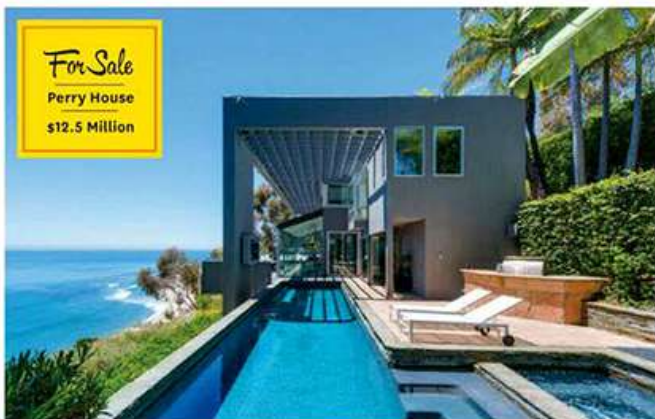
NO. 15 Cardio in a Trailer (With Pink)

Since launching her **JUICY ATHLETIC MOVES** (3650 Cross Creek Road) workout in 2009, instructor Neda Soderqvist has developed a diehard fitness following, counting Pink, Minnie Driver and Mira Sorvino among her fans. Devotees pack into Soderqvist's Cross Creek Road trailer for the intense cardio workout, choreographed to high-energy music. Her JAM sessions are not only designed to tone and strengthen, but can also burn up to 1,200 calories each time. "You feel like you are in someone's personal dance studio," says Guber Brufsky, who attends workouts several times a week. "It feels very real and authentic, and not overly commercial."

NO. 16 Spinning by the Shore

East Coast indoor cycling phenom **SOULCYCLE** (3874 Cross Creek Road) has continued its expansion west with the opening of its sixth L.A. studio, this time at Malibu Village. Instructors dish out their motivational cues as riders sweat it out on the 52 bikes. Cindy Crawford, Kelly

CONTINUED ON PAGE 87



Matthew Perry is selling his seaside house in Malibu's Serra Retreat gated community for \$12.5 million after first listing it in 2011 for \$13.5 million and last year turning it into Perry House, a sober-living center. The actor, who bought the four-bedroom, six-bath home for \$6.5 million in 2005, plans to relocate the center to a more affordable Studio City location. The listing is with Partners Trust's Mark Rutstein and Greg Holcomb.