



BAY RESIDENCES FLOOR PLANS

BAY RESIDENCES

Residents will come home to comfort and elegance at the Bay residences, two mid-rise buildings with five floors of residences over one floor of parking. Each of these spectacular residences feature three bedrooms from over 3,000 square feet with 10-foot ceilings and terraces over 400 square feet that feature beautiful water and marina views.



ORAL REPRESENTATIONS CANNOT BE RELIED UPON AS CORRECTLY STATING THE REPRESENTATIONS OF THE DEVELOPER. FOR CORRECT REPRESENTATIONS, MAKE REFERENCE TO THIS BROCHURE AND TO THE DOCUMENTS REQUIRED BY SECTION 718.503, FLORIDA STATUTES, TO BE FURNISHED BY A DEVELOPER TO A BUYER OR LESSEE.

See legal disclaimers on final pages.

2-18-2022



ONE-OF-A-KIND

LUXURY FINISHES

Residences are exceptionally well-appointed with generous ceiling heights of 10 feet and a level of finishes found only in the finest luxury residences. One Naples homeowners may select from large format, modern porcelain tile or elegant wood flooring, and quartz countertops. Kitchens are generously sized and superbly equipped with Sub-Zero and Wolf appliances, Franke sinks, Dornbracht faucets, and European-style cabinetry. Master bathrooms are large and lavish, with spacious closets, double vanities with marble countertops, freestanding tubs, large showers and platinum finish Dornbracht fittings and hardware.



BAY AMENITIES

The Bay Residences provide a stunning backdrop to Vanderbilt Lagoon and the Marina at One Naples. A waterfront promenade gives the residents access to the marina through a palm-lined widened walkway. The two Bay residential buildings have 15,000 square feet of indoor and outdoor amenity space, including a state-of-the-art fitness center and social clubroom. Rooftop amenities include a private pool, cabanas and sundeck, all with spectacular views of Vanderbilt Lagoon.





BAY AMENITIES

- Resident concierge services
- Waterfront promenade to the Marina at One Naples
- State-of-the-art fitness center
- Social clubroom
- Spectacular rooftop pool, sundeck and cabanas
- Elevated amenity social area with fire pits
- Breathtaking views of Vanderbilt Lagoon



BAY

FLOOR PLANS



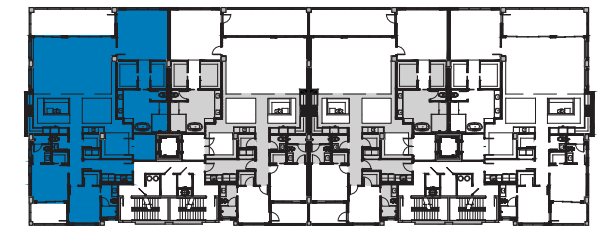
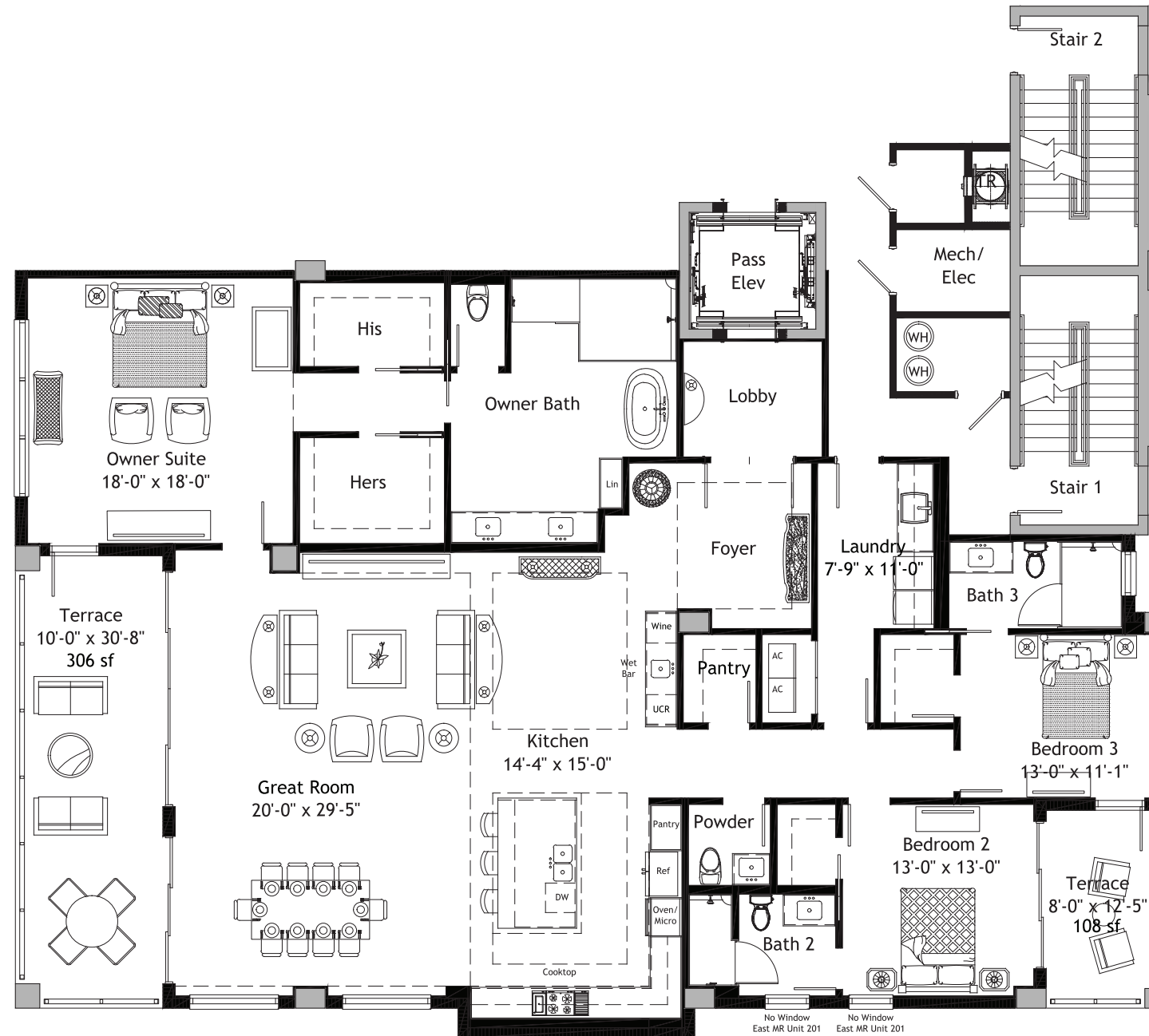
BAY

RESIDENCE

WEST 01 & EAST 05

3 Bedrooms • 3.5 Bathrooms • 10-foot Ceilings
Great Room

Living Area	3,107 sq.ft.
Terraces	414 sq.ft.
Total Residence	3,521 sq.ft.



KEY PLAN



STATED LIVING AREA IS MEASURED TO THE EXTERIOR FACE OF EXTERIOR WALLS, WITHOUT EXCLUDING AREAS THAT MAY BE OCCUPIED BY COLUMNS OR OTHER STRUCTURAL COMPONENTS. THIS METHOD OF MEASUREMENT VARIES FROM, AND IS LARGER THAN, THE DIMENSIONS THAT WOULD BE DETERMINED BY USING THE DESCRIPTION AND THE DEFINITION OF THE UNIT SET FORTH IN THE DECLARATION (WHICH GENERALLY ONLY INCLUDES THE INTERIOR AIRSPACE BETWEEN THE PERIMETER WALLS AND EXCLUDES STRUCTURAL COMPONENTS). ALL DIMENSIONS ARE APPROXIMATE AND MAY VARY WITH ACTUAL CONSTRUCTION. MEASUREMENTS OF ROOMS/TERRACES SET FORTH ON THIS FLOOR PLAN ARE TAKEN AT THE GREATEST POINTS OF EACH ROOM/TERRACE (AS IF THE ROOM WERE A PERFECT RECTANGLE), WITHOUT REGARD FOR ANY CUTOUTS OR IRREGULARITIES. ACCORDINGLY, THE AREA OF THE ACTUAL ROOM WILL TYPICALLY BE SMALLER THAN THE PRODUCT OBTAINED BY MULTIPLYING THE STATED LENGTH TIMES WIDTH. ALL FLOOR PLANS AND DEVELOPMENT PLANS ARE SUBJECT TO CHANGE. THE DEVELOPER EXPRESSLY RESERVES THE RIGHT TO MAKE MODIFICATIONS, REVISIONS, AND CHANGES WITHOUT NOTICE. ALL DEPICTIONS OF FURNISHINGS, APPLIANCES, BUILT-INS, COUNTERS, SOFFITS, FLOOR COVERINGS, LIGHTING, LANDSCAPING AND OTHER MATTERS OF DETAIL, INCLUDING, WITHOUT LIMITATION, ITEMS OF FINISH AND DECORATION, ARE CONCEPTUAL ONLY AND ARE NOT NECESSARILY INCLUDED IN EACH UNIT. CONSULT YOUR PROSPECTUS AND PURCHASE AGREEMENT. SEE ADDITIONAL DISCLAIMERS ON LAST PAGES.



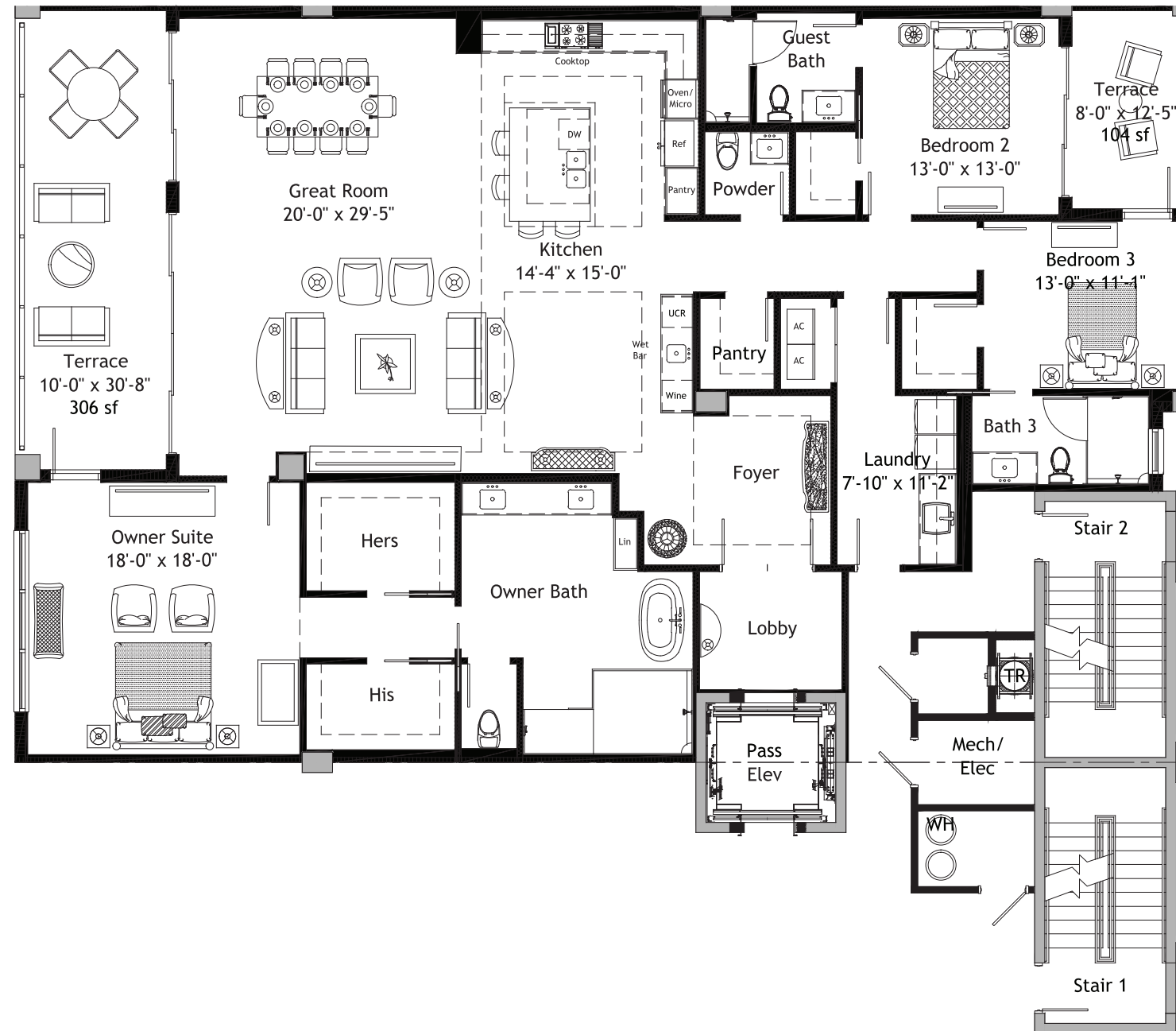
BAY

RESIDENCE

WEST 02 & EAST 06

3 Bedrooms • 3.5 Bathrooms • 10-foot Ceilings
Great Room

Living Area	3,075 sq.ft.
Terraces	410 sq.ft.
Total Residence	3,485 sq.ft.



KEY PLAN



STATED LIVING AREA IS MEASURED TO THE EXTERIOR FACE OF EXTERIOR WALLS, WITHOUT EXCLUDING AREAS THAT MAY BE OCCUPIED BY COLUMNS OR OTHER STRUCTURAL COMPONENTS. THIS METHOD OF MEASUREMENT VARIES FROM, AND IS LARGER THAN, THE DIMENSIONS THAT WOULD BE DETERMINED BY USING THE DESCRIPTION AND THE DEFINITION OF THE UNIT SET FORTH IN THE DECLARATION (WHICH GENERALLY ONLY INCLUDES THE INTERIOR AIRSPACE BETWEEN THE PERIMETER WALLS AND EXCLUDES STRUCTURAL COMPONENTS). ALL DIMENSIONS ARE APPROXIMATE AND MAY VARY WITH ACTUAL CONSTRUCTION. MEASUREMENTS OF ROOMS/TERRACES SET FORTH ON THIS FLOOR PLAN ARE TAKEN AT THE GREATEST POINTS OF EACH ROOM/TERRACE (AS IF THE ROOM WERE A PERFECT RECTANGLE), WITHOUT REGARD FOR ANY CUTOUTS OR IRREGULARITIES. ACCORDINGLY, THE AREA OF THE ACTUAL ROOM WILL TYPICALLY BE SMALLER THAN THE PRODUCT OBTAINED BY MULTIPLYING THE STATED LENGTH TIMES WIDTH. ALL FLOOR PLANS AND DEVELOPMENT PLANS ARE SUBJECT TO CHANGE. THE DEVELOPER EXPRESSLY RESERVES THE RIGHT TO MAKE MODIFICATIONS, REVISIONS, AND CHANGES WITHOUT NOTICE. ALL DEPICTIONS OF FURNISHINGS, APPLIANCES, BUILT-INS, COUNTERS, SOFFITS, FLOOR COVERINGS, LIGHTING, LANDSCAPING AND OTHER MATTERS OF DETAIL, INCLUDING, WITHOUT LIMITATION, ITEMS OF FINISH AND DECORATION, ARE CONCEPTUAL ONLY AND ARE NOT NECESSARILY INCLUDED IN EACH UNIT. CONSULT YOUR PROSPECTUS AND PURCHASE AGREEMENT. SEE ADDITIONAL DISCLAIMERS ON LAST PAGES.



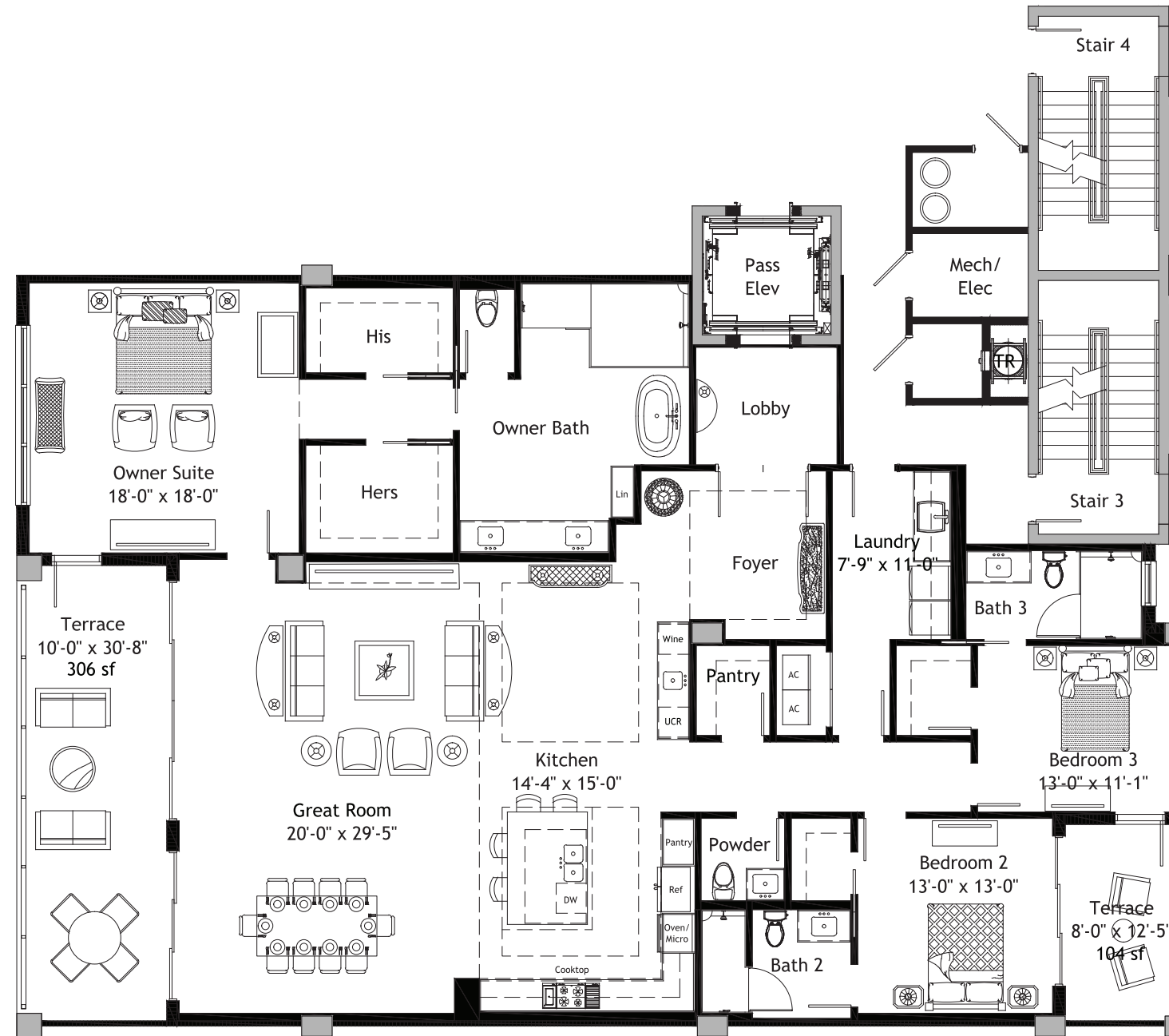
BAY

RESIDENCE

WEST 03 & EAST 07

3 Bedrooms • 3.5 Bathrooms • 10-foot Ceilings
Great Room

Living Area	3,075 sq.ft.
Terraces	410 sq.ft.
Total Residence	3,485 sq.ft.



KEY PLAN



STATED LIVING AREA IS MEASURED TO THE EXTERIOR FACE OF EXTERIOR WALLS, WITHOUT EXCLUDING AREAS THAT MAY BE OCCUPIED BY COLUMNS OR OTHER STRUCTURAL COMPONENTS. THIS METHOD OF MEASUREMENT VARIES FROM, AND IS LARGER THAN, THE DIMENSIONS THAT WOULD BE DETERMINED BY USING THE DESCRIPTION AND THE DEFINITION OF THE UNIT SET FORTH IN THE DECLARATION (WHICH GENERALLY ONLY INCLUDES THE INTERIOR AIRSPACE BETWEEN THE PERIMETER WALLS AND EXCLUDES STRUCTURAL COMPONENTS). ALL DIMENSIONS ARE APPROXIMATE AND MAY VARY WITH ACTUAL CONSTRUCTION. MEASUREMENTS OF ROOMS/TERRACES SET FORTH ON THIS FLOOR PLAN ARE TAKEN AT THE GREATEST POINTS OF EACH ROOM/TERRACE (AS IF THE ROOM WERE A PERFECT RECTANGLE), WITHOUT REGARD FOR ANY CUTOUTS OR IRREGULARITIES. ACCORDINGLY, THE AREA OF THE ACTUAL ROOM WILL TYPICALLY BE SMALLER THAN THE PRODUCT OBTAINED BY MULTIPLYING THE STATED LENGTH TIMES WIDTH. ALL FLOOR PLANS AND DEVELOPMENT PLANS ARE SUBJECT TO CHANGE. THE DEVELOPER EXPRESSLY RESERVES THE RIGHT TO MAKE MODIFICATIONS, REVISIONS, AND CHANGES WITHOUT NOTICE. ALL DEPICTIONS OF FURNISHINGS, APPLIANCES, BUILT-INS, COUNTERS, SOFFITS, FLOOR COVERINGS, LIGHTING, LANDSCAPING AND OTHER MATTERS OF DETAIL, INCLUDING, WITHOUT LIMITATION, ITEMS OF FINISH AND DECORATION, ARE CONCEPTUAL ONLY AND ARE NOT NECESSARILY INCLUDED IN EACH UNIT. CONSULT YOUR PROSPECTUS AND PURCHASE AGREEMENT. SEE ADDITIONAL DISCLAIMERS ON LAST PAGES.



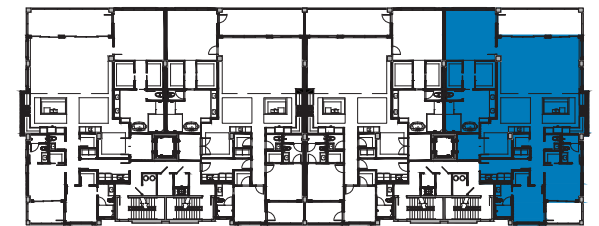
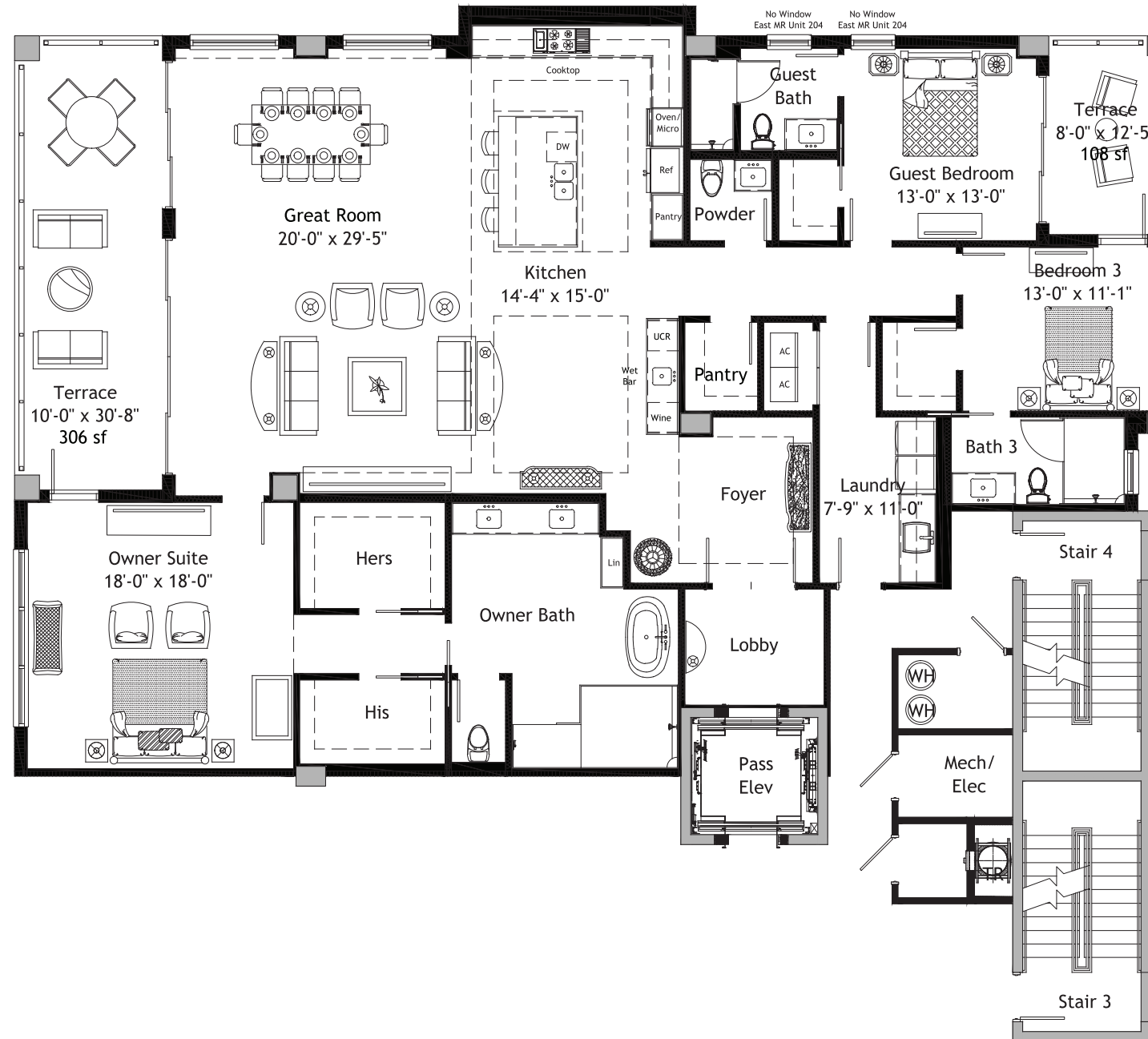
BAY

RESIDENCE

WEST 04 & EAST 08

3 Bedrooms • 3.5 Bathrooms • 10-foot Ceilings
Great Room

Living Area	3,107 sq.ft.
Terraces	414 sq.ft.
Total Residence	3,521 sq.ft.



KEY PLAN



STATED LIVING AREA IS MEASURED TO THE EXTERIOR FACE OF EXTERIOR WALLS, WITHOUT EXCLUDING AREAS THAT MAY BE OCCUPIED BY COLUMNS OR OTHER STRUCTURAL COMPONENTS. THIS METHOD OF MEASUREMENT VARIES FROM, AND IS LARGER THAN, THE DIMENSIONS THAT WOULD BE DETERMINED BY USING THE DESCRIPTION AND THE DEFINITION OF THE UNIT SET FORTH IN THE DECLARATION (WHICH GENERALLY ONLY INCLUDES THE INTERIOR AIRSPACE BETWEEN THE PERIMETER WALLS AND EXCLUDES STRUCTURAL COMPONENTS). ALL DIMENSIONS ARE APPROXIMATE AND MAY VARY WITH ACTUAL CONSTRUCTION. MEASUREMENTS OF ROOMS/TERRACES SET FORTH ON THIS FLOOR PLAN ARE TAKEN AT THE GREATEST POINTS OF EACH ROOM/TERRACE (AS IF THE ROOM WERE A PERFECT RECTANGLE), WITHOUT REGARD FOR ANY CUTOUTS OR IRREGULARITIES. ACCORDINGLY, THE AREA OF THE ACTUAL ROOM WILL TYPICALLY BE SMALLER THAN THE PRODUCT OBTAINED BY MULTIPLYING THE STATED LENGTH TIMES WIDTH. ALL FLOOR PLANS AND DEVELOPMENT PLANS ARE SUBJECT TO CHANGE. THE DEVELOPER EXPRESSLY RESERVES THE RIGHT TO MAKE MODIFICATIONS, REVISIONS, AND CHANGES WITHOUT NOTICE. ALL DEPICTIONS OF FURNISHINGS, APPLIANCES, BUILT-INS, COUNTERS, SOFFITS, FLOOR COVERINGS, LIGHTING, LANDSCAPING AND OTHER MATTERS OF DETAIL, INCLUDING, WITHOUT LIMITATION, ITEMS OF FINISH AND DECORATION, ARE CONCEPTUAL ONLY AND ARE NOT NECESSARILY INCLUDED IN EACH UNIT. CONSULT YOUR PROSPECTUS AND PURCHASE AGREEMENT. SEE ADDITIONAL DISCLAIMERS ON LAST PAGES.



