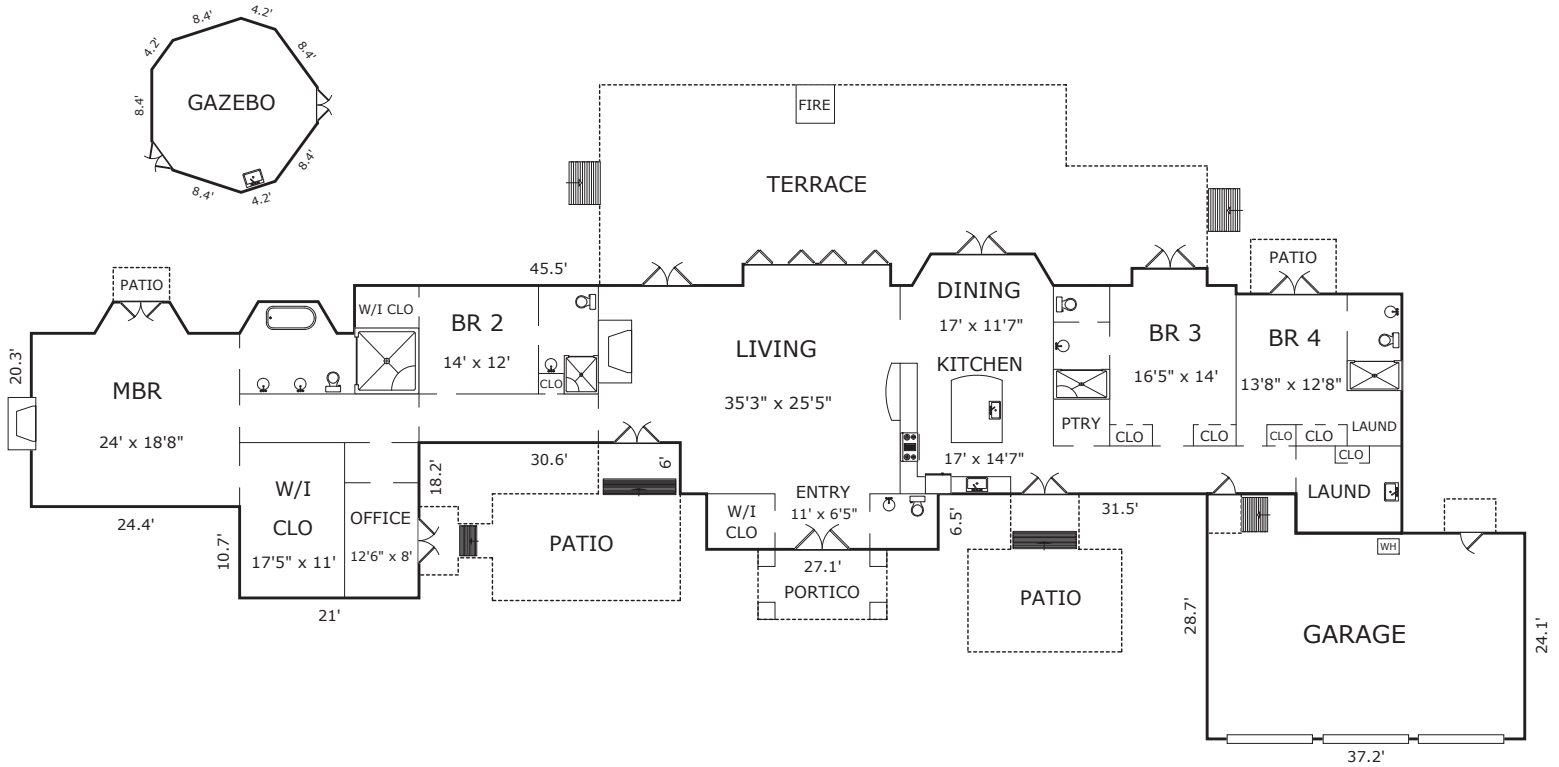


1139 PORTOLA ROAD, PEBBLE BEACH, CA 93953



AREA CALCULATIONS (approximate)

First Floor:	4,207sf
Net Livable Area:	4,207sf

Gazebo:	302	Garage:	944
Terrace:	1,401	Patio:	385
Patio:	268	Portico:	124
Patio:	64	Patio:	26