



A RARE THREE-PARCEL COASTAL ESTATE IN THE MUIRLANDS OF LA JOLLA

6388 La Jolla Scenic Drive S, La Jolla, CA 92037

6396 La Jolla Scenic Dr S

APN: 352-470-07-00

Offered by

Brenna Farnum

Sales Associate | CalRE #01742595

760.500.3483 | BrennaFarnum@gmail.com



COLDWELL BANKER
REALTY

A RARE THREE-PARCEL COASTAL ESTATE IN THE MUIRLANDS OF LA JOLLA

3 Separate Parcels | 7 Bedrooms | 8 Bathrooms | 7,191 Sq. Ft. | Offered at \$11,400,000

A truly rare coastal offering in the Muirlands of La Jolla, this exceptional estate includes three SEPARATE PARCELS, presenting a unique opportunity to own a private, land-rich compound seldom available in this market. Evoking the charm of the French countryside, the residence is a timeless expression of French Provincial architecture, where stone-clad exteriors, manicured gardens, and a storybook setting create an atmosphere both elegant and whimsical. Set on an elevated site with ocean views, the property unfolds as a hidden retreat, blending classic design with resort-style grounds. Light-filled interiors connect seamlessly to a series of outdoor living spaces, including terraces, courtyards, open lawns with recreation areas, and an expansive deck ideal for entertaining.

The pool and spa reflect a boutique resort ambiance overlooking stunning sunsets, featuring a setting reminiscent of a private coastal retreat, while lush landscaping presents a sense of privacy and tranquility throughout. A separate wing provides flexible guest or staff accommodations, enhancing the home's versatility. The inclusion of multiple parcels offers a spread of beautifully integrated space, flexibility, and future potential. Thoughtfully maintained, the home also features a newly installed roof and electrical system. Just minutes from the Village, world-renowned beaches, exceptional dining, and a vibrant collection of high-end boutiques, this is a rare opportunity to own a multi-parcel coastal compound offering both seclusion and the effortless access to one of the coast's most coveted lifestyles.























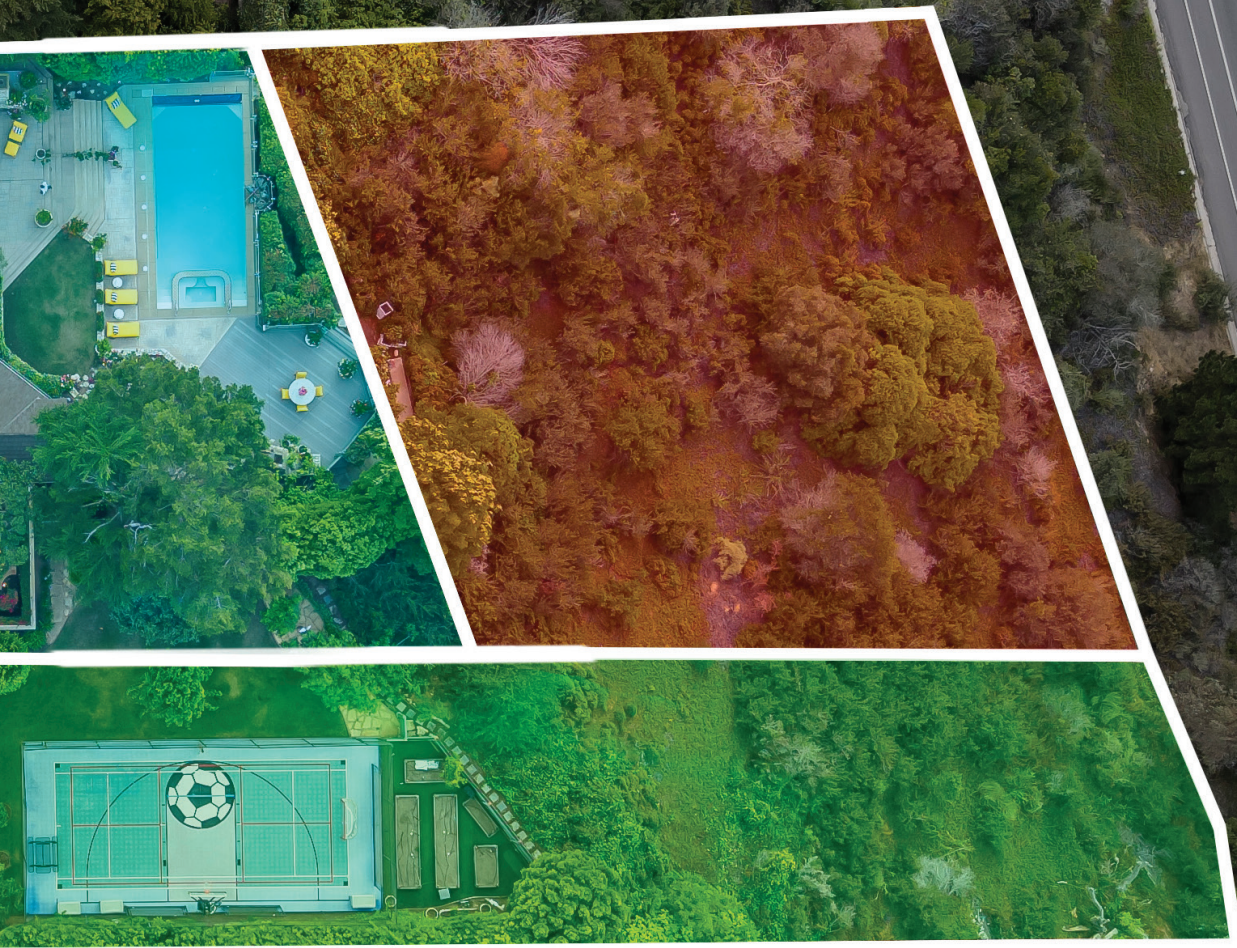


6388 La Jolla Scenic Dr S
19,509 sq ft / 0.45 acres



6396 La Jolla
25,700 sq ft / 0.58 acres

APN 352-470-07-00
10,170 sq ft / 0.23 acres



Scenic Dr S
0 sq ft / 0.59 acres





6388 La Jolla Scenic Drive S, La Jolla, CA 92037
6396 La Jolla Scenic Dr S
APN: 352-470-07-00



COLDWELL BANKER
REALTY



BRENNA FARNUM
Sales Associate
M: 760.500.3483
BrennaFarnum@gmail.com
CalRE #01742595



The property information herein is derived from various sources that may include, but not be limited to, county records and the Multiple Listing Service, and it may include approximations. Although the information is believed to be accurate, it is not warranted and you should not rely upon it without personal verification. Not intended as a solicitation if your property is already listed by another broker. Affiliated real estate agents are independent contractor sales associates, not employees. ©2026 Coldwell Banker. All Rights Reserved. Coldwell Banker and the Coldwell Banker logos are trademarks of Coldwell Banker Real Estate LLC. The Coldwell Banker® System is comprised of company owned offices which are owned by a subsidiary of Anywhere Advisors LLC and franchised offices which are independently owned and operated. The Coldwell Banker System fully supports the principles of the Fair Housing Act and the Equal Opportunity Act. 