



Retail Property For Lease

582 Castro St

SAN FRANCISCO, CA 94114

Position your business in the heart of the Castro, one of San Francisco's most vibrant and internationally recognized retail districts. This 1,560± SF ground-floor space offers prominent frontage along bustling Castro Street, surrounded by a dynamic mix of established retailers, restaurants, cafés, and nightlife that draw steady foot traffic seven days a week.

Get in touch

Morgan Thomas

415.505.0226
morgan.thomas@compass.com
CalDRE #01327365

COMPASS
COMMERCIAL

Executive Summary



Offering Summary

Lease Rate:	\$6,500 per month (Gross)
Building Size:	1,569 SF
Available SF:	1,569 SF
Lot Size:	3,125 SF
Number of Units:	1
Year Built:	1900
Zoning:	NCD-CASTRO-40-X

Property Overview

Position your business in the heart of the Castro, one of San Francisco's most vibrant and internationally recognized retail districts. This 1,560± SF ground-floor space offers prominent frontage along bustling Castro Street, surrounded by a dynamic mix of established retailers, restaurants, cafés, and nightlife that draw steady foot traffic seven days a week. With excellent visibility, generous window display potential, and immediate access to MUNI Metro (Castro Station) and multiple bus lines, the location delivers exceptional exposure for retail, food & beverage, wellness, service, or showroom users. The surrounding neighborhood blends strong daytime and evening trade with a loyal local base and year-round tourism.

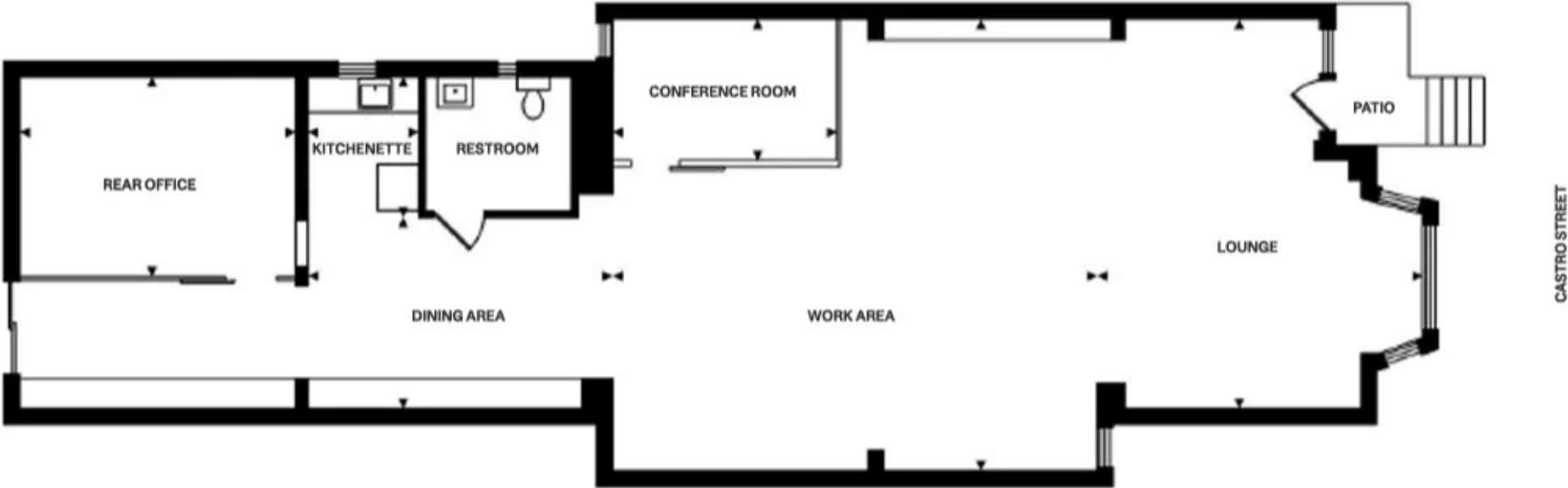
A rare opportunity to plant your flag in a true destination corridor.

Property Highlights

- 1,560± SF ground-floor retail/commercial space
- Prime Castro Street frontage with high pedestrian traffic
- Strong window display and signage potential

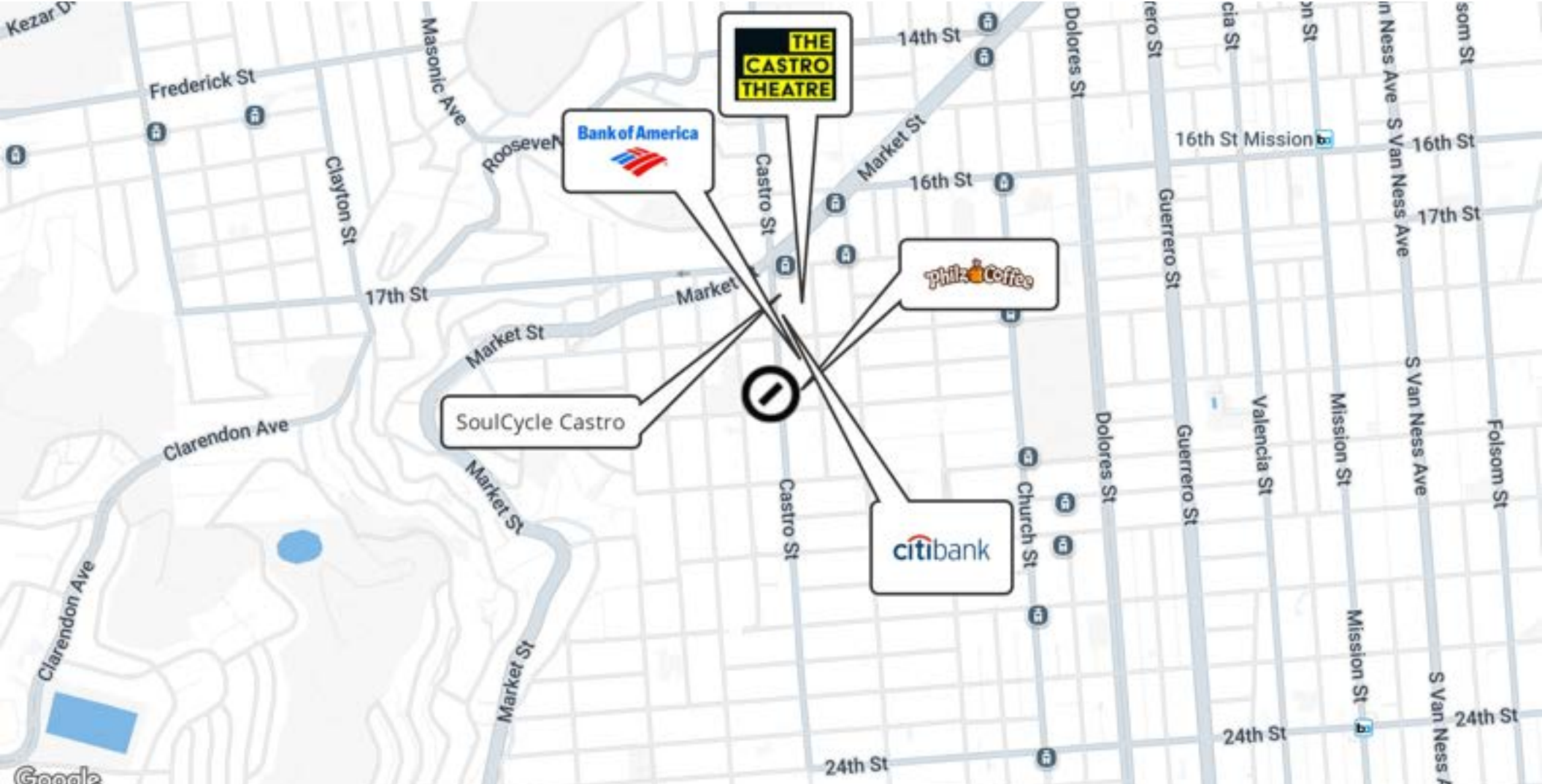
Morgan Thomas
 415.505.0226
 morgan.thomas@compass.com
 CalDRE #01327365

Floor Plan



Morgan Thomas
415.505.0226
morgan.thomas@compass.com
CalDRE #01327365

Retailer Map



Morgan Thomas
415.505.0226
morgan.thomas@compass.com
CalDRE #01327365