

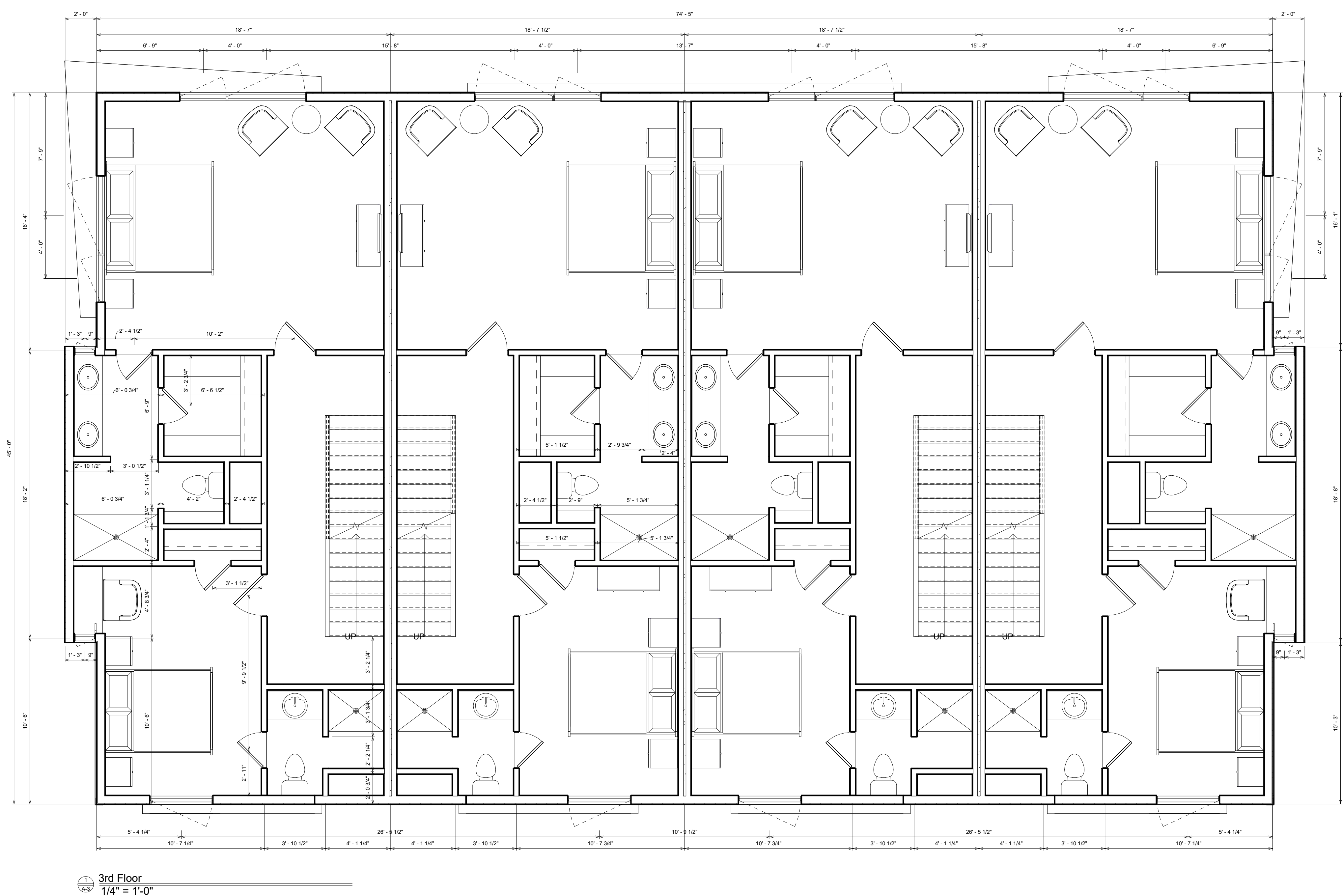
12 Unit

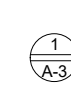
Walnut Ave

Charlotte,  
NC  
28208

These Documents prepared by  
Craig W. Issac Architecture are  
instruments of service for use  
solely with respect to this  
project. Craig W. Architect  
should retain all common law,  
statutory and other reserved  
rights, including copyright. The  
property Owner shall not reuse  
or permit the reuse of the  
Architect's documents except by  
mutual agreement in writing.

August, 28, 2017





3rd Floor  
1/4" = 1'-0"