



345

DEVILS BIGHT

PARK SHORE - NAPLES

DETAILS

Bedrooms	4 + Den
Bathrooms	4/1
Garage	3
Year Built	2004

LOT DIMENSIONS 102x155x102x157

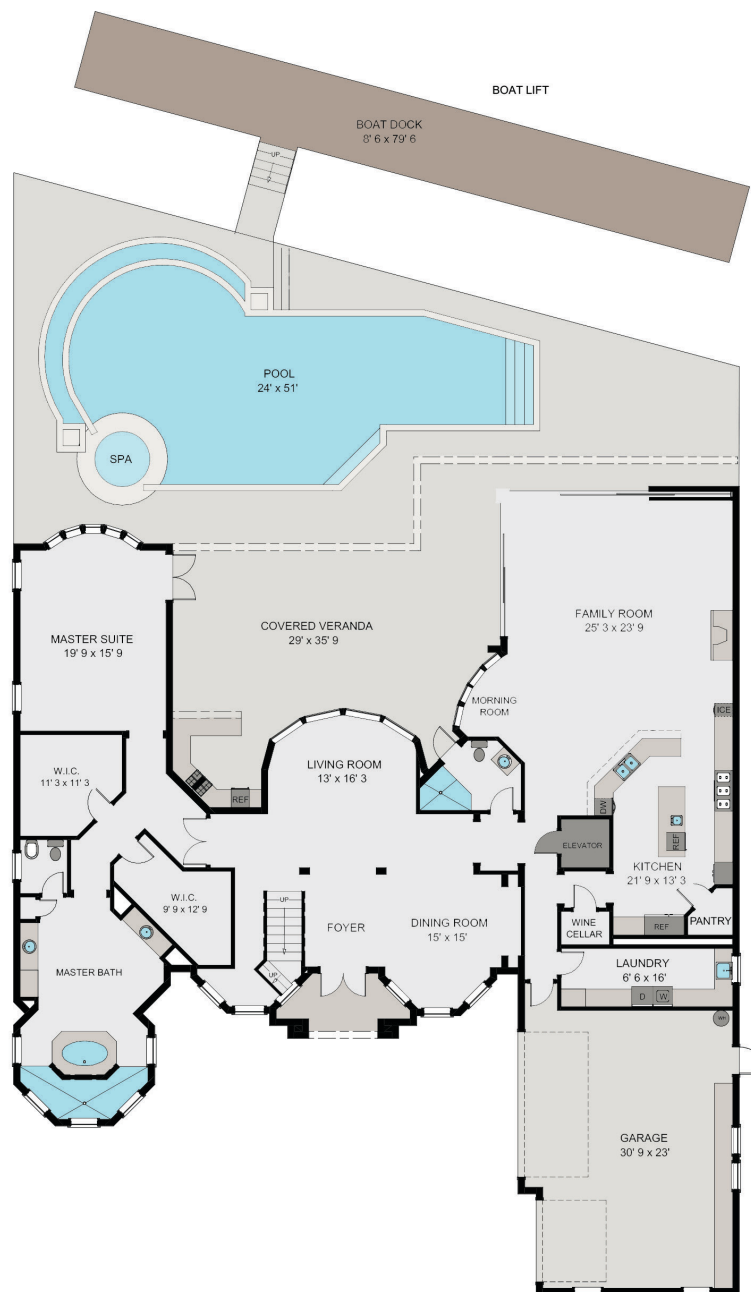
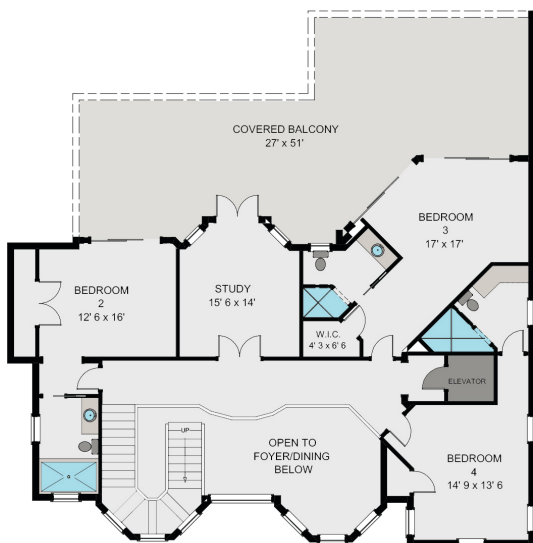
TOTAL LIVING AREA 5379 sq ft

TOTAL AREA 8090 sq ft

-Eligibility for Park Shore Beach Association

-Eligibility for Venetian Bay Yacht Club Boat Slip

MICHAELWAWLER.COM



MICHAEL G. LAWLER, PA

239.261.3939
INFO@MICHAELWAWLER.COM
800 HARBOUR DR | NAPLES, FL 34103



800 HARBOUR DRIVE, NAPLES, FLORIDA 34103 (239) 261-3939 © 2024 DOUGLAS ELLIMAN REAL ESTATE. ALL MATERIAL PRESENTED HEREIN IS INTENDED FOR INFORMATION PURPOSES ONLY. WHILE, THIS INFORMATION IS BELIEVED TO BE CORRECT, IT IS REPRESENTED SUBJECT TO ERRORS, OMISSIONS, CHANGES OR WITHDRAWAL WITHOUT NOTICE. ALL PROPERTY INFORMATION, INCLUDING, BUT NOT LIMITED TO SQUARE FOOTAGE, ROOM COUNT, NUMBER OF BEDROOMS AND THE SCHOOL DISTRICT IN PROPERTY LISTINGS SHOULD BE VERIFIED BY YOUR OWN ATTORNEY, ARCHITECT OR ZONING EXPERT. EQUAL HOUSING OPPORTUNITY. WE CONSIDER THIS INFORMATION TO BE RELIABLE, BUT BECAUSE IT HAS BEEN SUPPLIED BY THIRD PARTIES, WE CANNOT REPRESENT THAT IT IS ACCURATE, COMPLETE, OR THE MOST RECENT INFORMATION AND IT SHOULD NOT BE RELIED