



# 615

## BINNACLE DR

MOORINGS - NAPLES

### DETAILS

Bedrooms	5 + Den
Bathrooms	5/1
Garage	3
Year Built	2009

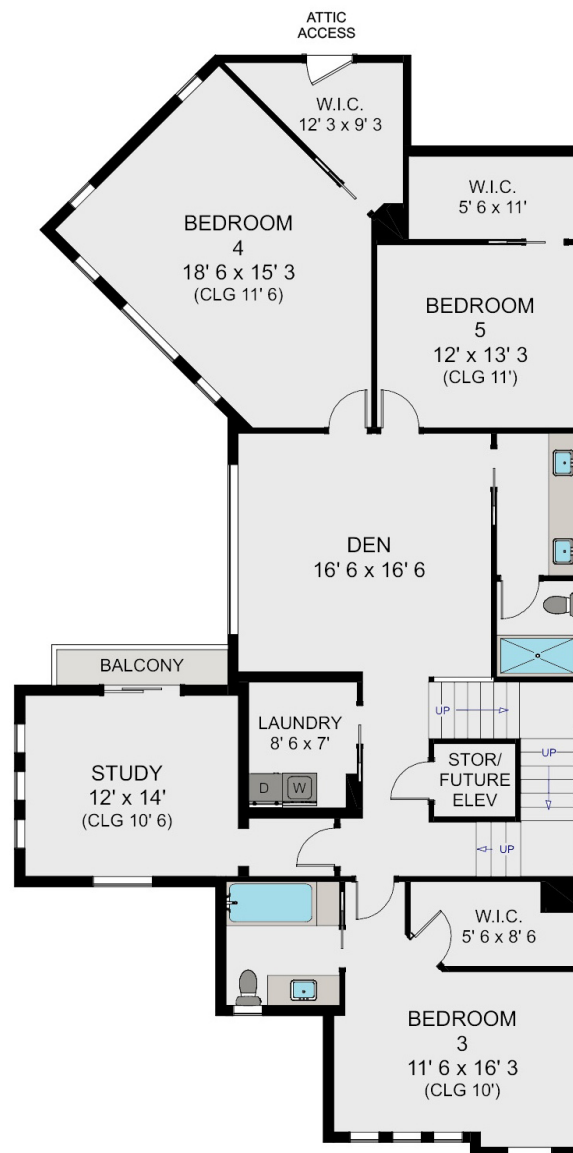
LOT DIMENSIONS 94x178x92x157

TOTAL LIVING AREA 5515 sq ft

TOTAL AREA 7781 sq ft

-The Moorings offers a relaxed coastal lifestyle with quiet, tree-lined streets, boating access, and close proximity to downtown Naples. Property owners in The Moorings are eligible to join the Moorings Property Owners Association, which grants access to the private Moorings Beach Park with exclusive parking, a chickee hut, restrooms, and a dedicated beachfront for members.

[MICHAELLOWLER.COM](http://MICHAELLOWLER.COM)



**MICHAEL G. LAWLER, PA**

239.261.3939  
 INFO@MICHAELLOWLER.COM  
 800 HARBOUR DR | NAPLES, FL 34103



800 HARBOUR DRIVE, NAPLES, FLORIDA 34103 (239) 261-3939 © 2024 DOUGLAS ELLIMAN REAL ESTATE. ALL MATERIAL PRESENTED HEREIN IS INTENDED FOR INFORMATION PURPOSES ONLY. WHILE, THIS INFORMATION IS BELIEVED TO BE CORRECT, IT IS REPRESENTED SUBJECT TO ERRORS, OMISSIONS, CHANGES OR WITHDRAWAL WITHOUT NOTICE. ALL PROPERTY INFORMATION, INCLUDING, BUT NOT LIMITED TO SQUARE FOOTAGE, ROOM COUNT, NUMBER OF BEDROOMS AND THE SCHOOL DISTRICT IN PROPERTY LISTINGS SHOULD BE VERIFIED BY YOUR OWN ATTORNEY, ARCHITECT OR ZONING EXPERT. EQUAL HOUSING OPPORTUNITY. WE CONSIDER THIS INFORMATION TO BE RELIABLE, BUT BECAUSE IT HAS BEEN SUPPLIED BY THIRD PARTIES, WE CANNOT REPRESENT THAT IT IS ACCURATE, COMPLETE, OR THE MOST RECENT INFORMATION AND IT SHOULD NOT BE RELIED