

ADAGIO

Fort Lauderdale Beach

WATERFRONT
LUXURY RESIDENCES

ADAGIO RESIDENCE 01

Details

2,383 sq ft A/C

436 sq ft Terrace

2,819 sq ft Total

3 Bedrooms

3.6 Bathrooms

2 Elevators + Foyer



SEASIDE PROPERTIES GROUP
at Douglas Elliman
LUXURY REAL ESTATE FROM MIAMI BEACH TO PALM BEACH

*Please note that some homeowners have customized the floorplan to best suit their needs. Subject to errors and omissions. Information obtained from sources deemed reliable but not warranted.

ADAGIO

Fort Lauderdale Beach

WATERFRONT
LUXURY RESIDENCES

ADAGIO RESIDENCE 02

Details

2,746 sq ft A/C

464 sq ft Terrace

3,210 sq ft Total

3 Bedrooms

3.6 Bathrooms

Den / Great Room

2 Elevators + Foyer



SEASIDE PROPERTIES GROUP
at Douglas Elliman
LUXURY REAL ESTATE FROM MIAMI BEACH TO PALM BEACH

*Please note that some homeowners have customized the floorplan to best suit their needs. Subject to errors and omissions. Information obtained from sources deemed reliable but not warranted.

ADAGIO

Fort Lauderdale Beach

WATERFRONT
LUXURY RESIDENCES

ADAGIO RESIDENCE 03

Details

2,850 sq ft A/C

526 sq ft Terrace

3,376 sq ft Total

3 Bedrooms

3.5 Bathrooms

Den / Great Room

2 Elevators + Foyer



SEASIDE PROPERTIES GROUP
at DouglasElliman
LUXURY REAL ESTATE FROM MIAMI BEACH TO PALM BEACH

*Please note that some homeowners have customized the floorplan to best suit their needs. Subject to errors and omissions. Information obtained from sources deemed reliable but not warranted.

ADAGIO

Fort Lauderdale Beach

WATERFRONT
LUXURY RESIDENCES

ADAGIO RESIDENCE 04

Details

3,211 sq ft A/C

586 sq ft Terrace

3,797 sq ft Total

3 Bedrooms

3.5 Bathrooms

Den / Great Room

2 Elevators + Foyer

Office



SEASIDE PROPERTIES GROUP
at Douglas Elliman
LUXURY REAL ESTATE FROM MIAMI BEACH TO PALM BEACH

*Please note that some homeowners have customized the floorplan to best suit their needs. Subject to errors and omissions. Information obtained from sources deemed reliable but not warranted.

ADAGIO

Fort Lauderdale Beach

WATERFRONT
LUXURY RESIDENCES

ADAGIO PENTHOUSE

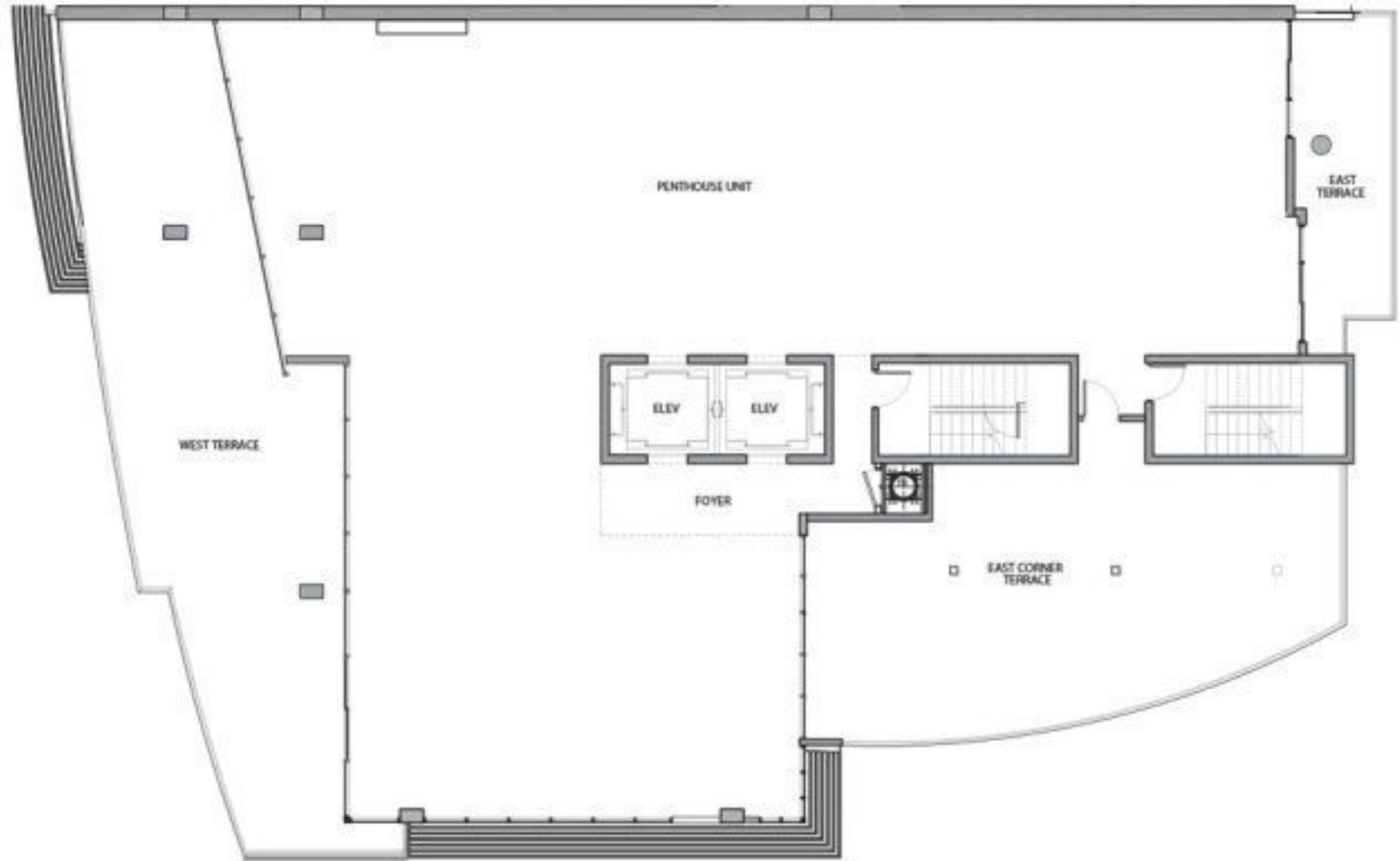
Details

4,085 sq ft A/C

2,234 sq ft Terrace

6,319 sq ft Total

2 Elevators + Foyer



SEASIDE PROPERTIES GROUP
at **DouglasElliman**
LUXURY REAL ESTATE FROM MIAMI BEACH TO PALM BEACH

*Please note that some homeowners have customized the floorplan to best suit their needs. Subject to errors and omissions. Information obtained from sources deemed reliable but not warranted.



