

2000 OCEAN

by Enrique Norton

North Residence Half Floor Unit

Floors 5 — 33

Interior
2,915 FT² / 270.6 M²

Exterior
475 FT² / 44 M²

Total
3,388 FT² / 314.75 M²

Features
3 Bedrooms + Den
3 Bathrooms
Powder Room
East & West Terraces
Private Elevator Landing

Minotti



1-3 FREEMAN DUVET + GRAY



13 COLETTE



4 JOY JUT OUT



14 DIBBETS



5 SONG



15 INDIANA



6-7 FREEMAN LOUNGE



16 WARREN OUTDOOR



8 GRAY



17 CORTINA OUTDOOR



9 CAULFIELD



18 CALDER BRONZE



10 NOOR



19 LESLIE



11 JACQUES



20 CATLIN



12 CALDER BRONZE



21 CREED BED



22 CLOSE



23 FREEMAN



24 DIBBETS FRAME



25 YANG BED OFFSET



26 ELLIOT



27 CORTINA



28 CESAR



29 BRISLEY



30 DUCHAMP BRONZE

Keyplan



ORAL REPRESENTATIONS CANNOT BE RELIED UPON AS CORRECTLY STATING THE REPRESENTATIONS OF THE DEVELOPER. FOR CORRECT REPRESENTATIONS, REFERENCE SHOULD BE MADE TO THE DOCUMENTS REQUIRED BY SECTION 718.503, FLORIDA STATUTES, TO BE FURNISHED BY A DEVELOPER TO A BUYER OR LESSEE.

This offering is made only by the Prospectus for the Condominium and no statement should be relied upon if not made in the Prospectus. This is not intended to be an offer to sell nor a solicitation of offers to buy in any jurisdiction where prohibited by law, and your eligibility for purchase will depend upon your state of residency.

APPLICABLE TO NEW YORK RESIDENTS: This advertisement is not an offering. It is a solicitation of interest in the advertised property. No offering of the advertised units can be made and no deposits can be accepted, or reservations, binding or non-binding, can be made until an offering plan is filed with the New York State Department of Law. This advertisement is made pursuant to Cooperative Policy Statement No. 1, issued by the New York State Department of Law, CP16-0047, Sponsor: 2000 Ocean Drive LLC, 2000 S. Ocean Drive, Hallandale Beach, Florida 33009. Stated square footages and dimensions are measured to the exterior boundaries of the exterior walls and the centerline of interior demising walls and in fact vary from the square footage and dimensions that would be determined by using the description and definition of the "Unit" set forth in the Declaration (which generally only includes the interior airspace between the perimeter walls and excludes all interior structural components and other common elements). The plans, specifications, terms, conditions and statements contained in this brochure are proposed only, and the Developer reserves the right to modify, revise or withdraw any or all of same in its sole discretion and without prior notice. They should not be relied upon as representations, express or implied, of the final detail of the residences. The developer expressly reserves the right to make modifications, revisions, and changes it deems desirable in its sole and absolute discretion. All depictions of furnishings, finishes, appliances, counters, soffits, floor coverings and other matters of detail, including, without limitation, items of finish and decoration, are conceptual only and are not necessarily included in each Unit. Consult your Agreement and the Prospectus for the items included with the Unit. Equal Housing Opportunity.

2000 OCEAN

by Enrique Norton

South Residence Half Floor Unit

Floors 5 — 35

Interior
2,913 FT² / 270.6 M²

Exterior
475 FT² / 44 M²

Total
3,388 FT² / 314.75 M²

Features
3 Bedrooms + Den
3 Bathrooms
Powder Room
East & West Terraces
Private Elevator Landing

Minotti



1-3 FREEMAN DUVET + GRAY



4 JOY JUT OUT



5 JACOB



6-7 FREEMAN LOUNGE



8 AERON



9 BRISLEY



10 RILEY



12 CALDER BRONZE



11 DIBBETS



13 CREED SMALL



14 DUCHAMP BRONZE



15 INDIANA



16 WARREN OUTDOOR



17 CORTINA OUTDOOR



18 CALDER BRONZE



19 LESLIE



20 CATLIN



21 CREED BED



22 CLOSE



23 FREEMAN



24 DIBBETS FRAME



25 YANG BED OFFSET



26 ELLIOT



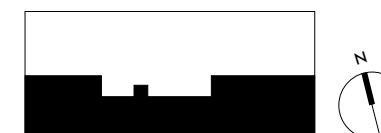
27 CORTINA



28 CESAR



Keyplan



ORAL REPRESENTATIONS CANNOT BE RELIED UPON AS CORRECTLY STATING THE REPRESENTATIONS OF THE DEVELOPER. FOR CORRECT REPRESENTATIONS, REFERENCE SHOULD BE MADE TO THE DOCUMENTS REQUIRED BY SECTION 718.503, FLORIDA STATUTES, TO BE FURNISHED BY A DEVELOPER TO A BUYER OR LESSEE.

This offering is made only by the Prospectus for the Condominium and no statement should be relied upon if not made in the Prospectus. This is not intended to be an offer to sell nor a solicitation of offers to buy in any jurisdiction where prohibited by law, and your eligibility for purchase will depend upon your state of residency.

APPLICABLE TO NEW YORK RESIDENTS: This advertisement is not an offering. It is a solicitation of interest in the advertised property. No offering of the advertised units can be made and no deposits can be accepted, or reservations, binding or non-binding, can be made until an offering plan is filed with the New York State Department of Law. This advertisement is made pursuant to Cooperative Policy Statement No. 1, issued by the New York State Department of Law, CP16-0047, Sponsor: 2000 Ocean Drive LLC, 2000 S. Ocean Drive, Hallandale Beach, Florida 33009. Stated square footages and dimensions are measured to the exterior boundaries of the exterior walls and the centerline of interior demising walls and in fact vary from the square footage and dimensions that would be determined by using the description and definition of the "Unit" set forth in the Declaration (which generally only includes the interior airspace between the perimeter walls and excludes all interior structural components and other common elements). The plans, specifications, terms, conditions and statements contained in this brochure are proposed only, and the Developer reserves the right to modify, revise or withdraw any or all of same in its sole discretion and without prior notice. They should not be relied upon as representations, express or implied, of the final detail of the residences. The developer expressly reserves the right to make modifications, revisions, and changes it deems desirable in its sole and absolute discretion. All depictions of furnishings, finishes, appliances, counters, soffits, floor coverings and other matters of detail, including, without limitation, items of finish and decoration, are conceptual only and are not necessarily included in each Unit. Consult your Agreement and the Prospectus for the items included with the Unit. Equal Housing Opportunity.



1-2-4 FREEMAN DUVET + FREEMAN TAILOR WING



17 CATLIN



18 TWOMBLY



3 RITTER

5 JACOB



19 FREEMAN



6-7 FREEMAN LOUNGE



20 BELLAGIO LOUNGE



21 ASTON LOUNGE



8 JOY JUT OUT



9 LEGER BRONZE



22 JENSEN BERGERE + OTTOMAN



10 CLOSE



11 AERON



12 BRISLEY



14 STILL



13 LESLIE BERGERE + OTTOMAN



24-26 INDIANA



15 CALDER BRONZE



25 ELLIOTT OUTDOOR



27 KLASEN OUTDOOR



16 DIBBETS



30 EVANS OUTDOOR



29 CORTINA OUTDOOR

2000 OCEAN

by Enrique Norton

Full Floor Penthouse

Floors 34—38

Interior
5,832 FT² / 541.8 M²

Exterior
949 FT² / 88.1 M²

Total
6,781 FT² / 630 M²

Features
5 Bedrooms
6 Bathrooms
Powder Room
Staff Quarters
East & West Terraces
Private Elevator Landing

Minotti



Keyplan



ORAL REPRESENTATIONS CANNOT BE RELIED UPON AS CORRECTLY STATING THE REPRESENTATIONS OF THE DEVELOPER. FOR CORRECT REPRESENTATIONS, REFERENCE SHOULD BE MADE TO THE DOCUMENTS REQUIRED BY SECTION 718.503, FLORIDA STATUTES, TO BE FURNISHED BY A DEVELOPER TO A BUYER OR LESSEE.

This offering is made only by the Prospectus for the Condominium and no statement should be relied upon if not made in the Prospectus. This is not intended to be an offer to sell nor a solicitation of offers to buy in any jurisdiction where prohibited by law, and your eligibility for purchase will depend upon your state of residency.

APPLICABLE TO NEW YORK RESIDENTS: This advertisement is not an offering. It is a solicitation of interest in the advertised property. No offering of the advertised units can be made and no deposits can be accepted, or reservations, binding or non-binding, can be made until an offering plan is filed with the New York State Department of Law. This advertisement is made pursuant to Cooperative Policy Statement No. 1, issued by the New York State Department of Law, CP16-0047, Sponsor: 2000 Ocean Drive LLC, 2000 S. Ocean Drive, Hollandale Beach, Florida 33009. Stated square footages and dimensions are measured to the exterior boundaries of the exterior walls and the centerline of interior demising walls and in fact vary from the square footages and dimensions that would be determined by using the description and definition of the "Unit" set forth in the Declaration (which generally only includes the interior airspace between the perimeter walls and excludes all exterior structural components and other common elements). The plans, specifications, terms, conditions and statements contained in this brochure are proposed only, and the Developer reserves the right to modify, revise or withdraw any or all of same in its sole discretion and without prior notice. They should not be relied upon as representations, express or implied, of the final detail of the residences. The developer expressly reserves the right to make modifications, revisions, and changes it deems desirable in its sole and absolute discretion. All depictions of furnishings, finishes, appliances, counters, soffits, floor coverings and other matters of detail, including, without limitation, items of finish and decoration, are conceptual only and are not necessarily included in each Unit. Consult your Agreement and the Prospectus for the items included with the Unit. Equal Housing Opportunity.



33 CREED BED



40 YANG BED OFFSET



34 CLOSE



41 ELLIOT



35 DIBBETS FRAME



42 CORTINA



36 CREED DINING



43 ASTON



37 CLOSE



44 DUCHAMP BRONZE



48 WARREN



38 CREED LARGE



45 DIBBETS FRAME



39 CESAR



46 ANDERSEN BED



28 WARREN OUTDOOR



31 CESAR OUTDOOR



32 CORTINA OUTDOOR



47 CLOSE

**North Residence
Half Floor Unit**

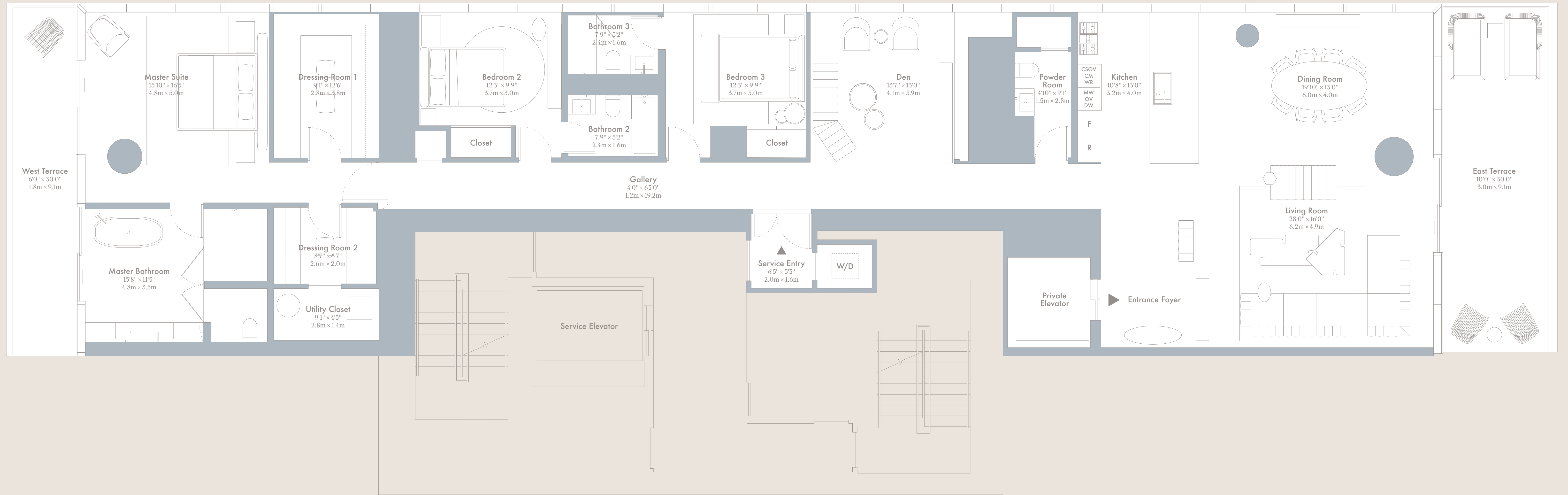
Floors 5 — 33

Interior
2,913 FT² / 270.6 M²

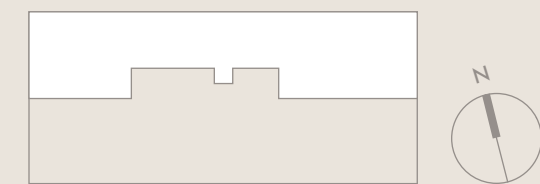
Exterior
475 FT² / 44.1 M²

Total
3,388 FT² / 314.75 M²

- Features
- 3 Bedrooms + Den
 - 3 Bathrooms
 - Powder Room
 - East & West Terraces
 - Private Elevator Landing



Keyplan



Scale: 1/4 Inch = 1 Foot

ORAL REPRESENTATIONS CANNOT BE RELIED UPON AS CORRECTLY STATING THE REPRESENTATIONS OF THE DEVELOPER. FOR CORRECT REPRESENTATIONS, REFERENCE SHOULD BE MADE TO THE DOCUMENTS REQUIRED BY SECTION 718.503, FLORIDA STATUTES, TO BE FURNISHED BY A DEVELOPER TO A BUYER OR LESSEE.

This offering is made only by the Prospectus for the Condominium and no statement should be relied upon if not made in the Prospectus. This is not intended to be an offer to sell nor a solicitation of offers to buy in any jurisdiction where prohibited by law, and your eligibility for purchase will depend upon your state of residency.

APPLICABLE TO NEW YORK RESIDENTS: This advertisement is not an offering. It is a solicitation of interest in the advertised property. No offering of the advertised units can be made and no deposits can be accepted, or reservations, binding or non-binding, can be made until an offering plan is filed with the New York State Department of Law. This advertisement is made pursuant to Cooperative Policy Statement No. 1, issued by the New York State Department of Law, CP165047, Sponsor 2000 Ocean Drive LLC, 2000 S. Ocean Drive, Hollywood Beach, Florida 33009. Stated square footage and dimensions are warranted to the exterior boundaries of the exterior walls and the centerline of interior partition walls and in fact vary from the square footage and dimensions that would be determined by using the description and definition of the "Unit" set forth in the Declaration (which generally only includes the interior spaces between the perimeter walls and excludes all interior structural components and other common elements). The plans, specifications, terms, conditions and statements contained in this brochure are proposed only, and the Developer reserves the right to modify, revise or withdraw any or all of same in its sole discretion and without prior notice. They should not be relied upon as representations, express or implied, of the final detail of the residences. The developer expressly reserves the right to make modifications, revisions, and changes it deems desirable in its sole and absolute discretion. All depictions of landscaping, finishes, appliances, covers, soffits, floor coverings and other matters of detail, including, without limitation, items of finish and decoration, are conceptual only and are not necessarily included in each Unit. Consult your Agreement and the Prospectus for the items included with the Unit. Equal Housing Opportunity.

**North Residence
Half Floor Unit**

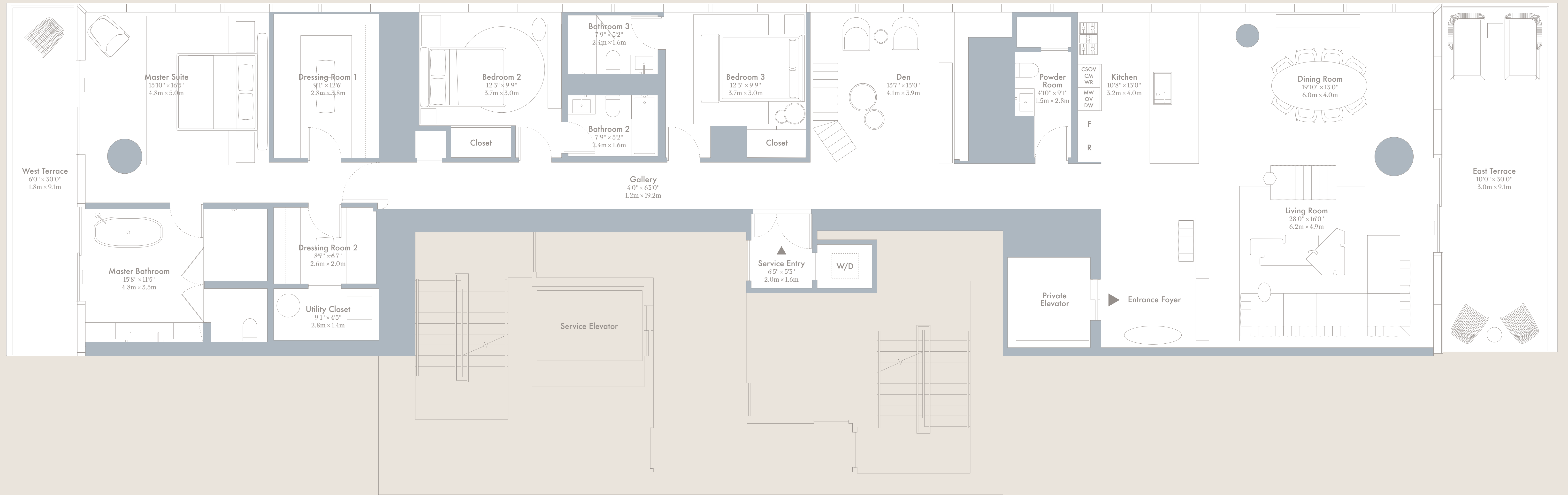
Floors 5 — 33

Interior
2,913 FT² / 270.6 M²

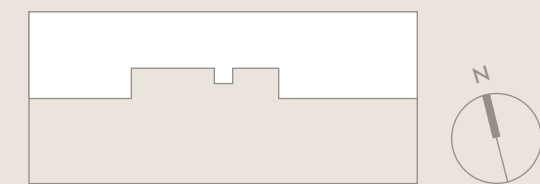
Exterior
475 FT² / 44.1 M²

Total
3,388 FT² / 314.75 M²

- Features
- 3 Bedrooms + Den
 - 3 Bathrooms
 - Powder Room
 - East & West Terraces
 - Private Elevator Landing



Keyplan



Scale: 1/4 Inch = 1 Foot

ORAL REPRESENTATIONS CANNOT BE RELIED UPON AS CORRECTLY STATING THE REPRESENTATIONS OF THE DEVELOPER. FOR CORRECT REPRESENTATIONS, REFERENCE SHOULD BE MADE TO THE DOCUMENTS REQUIRED BY SECTION 718.503, FLORIDA STATUTES, TO BE FURNISHED BY A DEVELOPER TO A BUYER OR LESSEE.

This offering is made only by the Prospectus for the Condominium and no statement should be relied upon if not made in the Prospectus. This is not intended to be an offer to sell nor a solicitation of offers to buy in any jurisdiction where prohibited by law, and your eligibility for purchase will depend upon your state of residency.

APPLICABLE TO NEW YORK RESIDENTS: This advertisement is not an offering. It is a solicitation of interest in the advertised property. No offering of the advertised units can be made and no deposits can be accepted, or reservations, binding or non-binding, can be made until an offering plan is filed with the New York State Department of Law. This advertisement is made pursuant to Cooperative Policy Statement No. 1, issued by the New York State Department of Law, CP165047, Sponsor 2000 Ocean Drive LLC, 2000 S. Ocean Drive, Hollywood Beach, Florida 33009. Stated square footage and dimensions are warranted to the exterior boundaries of the exterior walls and the centerline of interior partition walls and in fact vary from the square footage and dimensions that would be determined by using the description and definition of the "Unit" set forth in the Declaration (which generally only includes the interior spaces between the perimeter walls and excludes all interior structural components and other common elements). The plans, specifications, terms, conditions and statements contained in this brochure are proposed only, and the Developer reserves the right to modify, revise or withdraw any or all of same in its sole discretion and without prior notice. They should not be relied upon as representations, express or implied, of the final detail of the residences. The developer expressly reserves the right to make modifications, revisions, and changes it deems desirable in its sole and absolute discretion. All depictions of furnishings, finishes, appliances, covers, soffits, floor coverings and other matters of detail, including, without limitation, items of finish and decoration, are conceptual only and are not necessarily included in each Unit. Consult your Agreement and the Prospectus for the items included with the Unit. Equal Housing Opportunity.

**South Residence
Half Floor Unit**

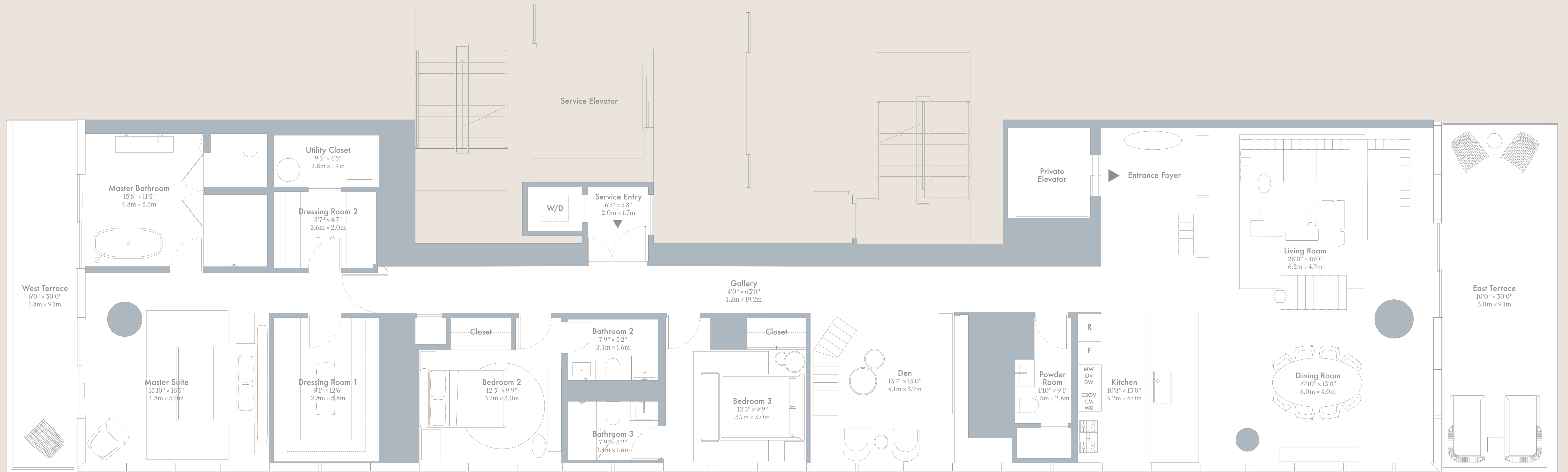
Floors 5 — 33

Interior
2,913 FT² / 270.6 M²

Exterior
475 FT² / 44.1 M²

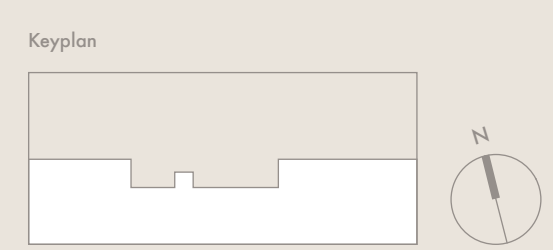
Total
3,388 FT² / 314.75 M²

- Features
- 3 Bedrooms + Den
 - 3 Bathrooms
 - Powder Room
 - East & West Terraces
 - Private Elevator Landing



INTRACOASTAL WATERWAY

ATLANTIC OCEAN



Scale: 1/4" = 1' Foot

ORAL REPRESENTATIONS CANNOT BE RELIED UPON AS CORRECTLY STATING THE REPRESENTATIONS OF THE DEVELOPER. FOR CORRECT REPRESENTATIONS, REFERENCE SHOULD BE MADE TO THE DOCUMENTS REQUIRED BY SECTION 718.503, FLORIDA STATUTES, TO BE FURNISHED BY A DEVELOPER TO A BUYER OR LESSEE.

This offering is made only by the Prospectus for the Condominium and no statement should be relied upon if not made in the Prospectus. This is not intended to be an offer to sell nor a solicitation of offers to buy in any jurisdiction where prohibited by law, and your eligibility for purchase will depend upon your state of residency.

APPLICABLE TO NEW YORK RESIDENTS: This advertisement is not an offering. It is a solicitation of interest in the advertised property. No offering of the advertised units can be made and no deposits can be accepted, or reservations, binding or non-binding, can be made until an offering plan is filed with the New York State Department of Law. This advertisement is made pursuant to Cooperative Policy Statement No. 1, issued by the New York State Department of Law, CP165047, Sponsor 2000 Ocean Drive LLC, 2000 S. Ocean Drive, Hollywood Beach, Florida 33009. Stated square footage and dimensions are warranted to the exterior boundaries of the exterior walls and the centerline of interior partition walls and in fact vary from the square footage and dimensions that would be determined by using the description and definition of the "Unit" set forth in the Declaration (which generally only includes the interior spaces between the perimeter walls and excludes all interior structural components and other common elements). The plans, specifications, terms, conditions and statements contained in this brochure are proposed only, and the Developer reserves the right to modify, revise or withdraw any or all of same in its sole discretion and without prior notice. They should not be relied upon as representations, express or implied, of the final detail of the residences. The developer expressly reserves the right to make modifications, revisions, and changes it deems desirable in its sole and absolute discretion. All depictions of landscaping, finishes, appliances, covers, soffits, floor coverings and other matters of detail, including, without limitation, items of finish and decoration, are conceptual only and are not necessarily included in each Unit. Consult your Agreement and the Prospectus for the items included with the Unit. Equal Housing Opportunity.

**South Residence
Half Floor Unit**

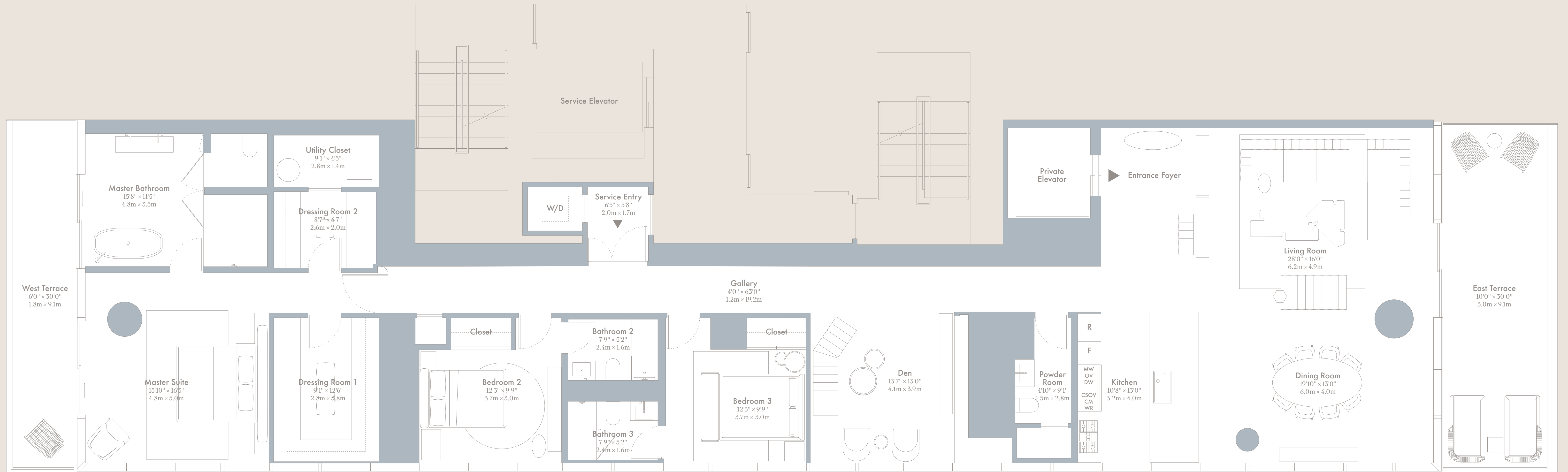
Floors 5 — 33

Interior
2,913 FT² / 270.6 M²

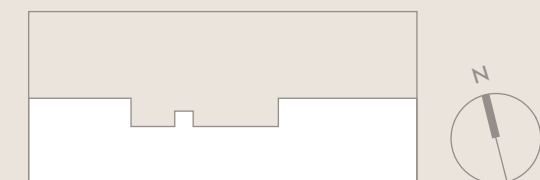
Exterior
475 FT² / 44.1 M²

Total
3,388 FT² / 314.75 M²

- Features
- 3 Bedrooms + Den
 - 3 Bathrooms
 - Powder Room
 - East & West Terraces
 - Private Elevator Landing



Keyplan



Scale: 1/4 Inch = 1 Foot

ORAL REPRESENTATIONS CANNOT BE RELIED UPON AS CORRECTLY STATING THE REPRESENTATIONS OF THE DEVELOPER. FOR CORRECT REPRESENTATIONS, REFERENCE SHOULD BE MADE TO THE DOCUMENTS REQUIRED BY SECTION 718.503, FLORIDA STATUTES, TO BE FURNISHED BY A DEVELOPER TO A BUYER OR LESSEE.

This offering is made only by the Prospectus for the Condominium and no statement should be relied upon if not made in the Prospectus. This is not intended to be an offer to sell nor a solicitation of offers to buy in any jurisdiction where prohibited by law, and your eligibility for purchase will depend upon your state of residency.

APPLICABLE TO NEW YORK RESIDENTS: This advertisement is not an offering. It is a solicitation of interest in the advertised property. No offering of the advertised units can be made and no deposits can be accepted, or reservations, binding or non-binding, can be made until an offering plan is filed with the New York State Department of Law. This advertisement is made pursuant to Cooperative Policy Statement No. 1, issued by the New York State Department of Law, CP165047, Sponsor 2000 Ocean Drive LLC, 2000 S. Ocean Drive, Hollywood Beach, Florida 33009. Stated square footage and dimensions are warranted to the exterior boundaries of the exterior walls and the centerline of interior partition walls and in fact vary from the square footage and dimensions that would be determined by using the description and definition of the "Unit" set forth in the Declaration (which generally only includes the interior spaces between the perimeter walls and excludes all interior structural components and other common elements). The plans, specifications, terms, conditions and statements contained in this brochure are proposed only, and the Developer reserves the right to modify, revise or withdraw any or all of same in its sole discretion and without prior notice. They should not be relied upon as representations, express or implied, of the final detail of the residences. The developer expressly reserves the right to make modifications, revisions, and changes it deems desirable in its sole and absolute discretion. All depictions of landscaping, finishes, appliances, covers, soffits, floor coverings and other matters of detail, including, without limitation, items of finish and decoration, are conceptual only and are not necessarily included in each Unit. Consult your Agreement and the Prospectus for the items included with the Unit. Equal Housing Opportunity.

SOUTH RESIDENCE Typical Half South Unit

2000
OCEAN
by Enrique Norten



1-3 FREEMAN DUVET + GRAY



13 CREED SMALL



21 CREED BED



4 JOY JUT OUT



14 DUCHAMP BRONZE



22 CLOSE



5 JACOB



15 INDIANA



23 FREEMAN



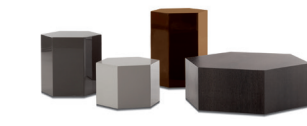
6-7 FREEMAN LOUNGE



16 WARREN OUTDOOR



24 DIBBETS FRAME



8 AERON



17 CORTINA OUTDOOR



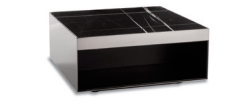
25 YANG BED OFFSET



9 BRISLEY



18 CALDER BRONZE



26 ELLIOT



10 RILEY



19 LESLIE



27 CORTINA



12 CALDER BRONZE



20 CATLIN



28 CESAR



11 DIBBETS



NORTH RESIDENCE Typical Half North Unit

2000
OCEAN
by Enrique Norten



1-3 FREEMAN DUVET + GRAY



13 COLETTE



4 JOY JUT OUT



14 DIBBETS



5 SONG



15 INDIANA



6-7 FREEMAN LOUNGE



16 WARREN OUTDOOR



8 GRAY



17 CORTINA OUTDOOR



9 CAULFIELD



18 CALDER BRONZE



10 NOOR



19 LESLIE



11 JACQUES



20 CATLIN



12 CALDER BRONZE



21 CREED BED



22 CLOSE



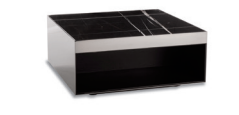
23 FREEMAN



24 DIBBETS FRAME



25 YANG BED OFFSET



26 ELLIOT



27 CORTINA



28 CESAR



29 BRISLEY



30 DUCHAMP BRONZE

FULL FLOOR PENTHOUSE Typical Full Unit

2000
OCEAN
by Enrique Norten



1-2-4 FREEMAN DUVET + FREEMAN TAILOR WING



17 CATLIN



18 TWOMBLY



3 RITTER



5 JACOB



19 FREEMAN



6-7 FREEMAN LOUNGE



20 BELLAGIO LOUNGE



21 ASTON LOUNGE



8 JOY JUT OUT



9 LEGER BRONZE



10 CLOSE



11 AERON



12 BRISLEY



14 STILL



22 JENSEN BERGERE + OTTOMAN



23 NAY



13 LESLIE BERGERE + OTTOMAN



24-26 INDIANA



15 CALDER BRONZE



25 ELLIOTT OUTDOOR



27 KLASEN OUTDOOR



16 DIBBETS



30 EVANS OUTDOOR



29 CORTINA OUTDOOR



33 CREED BED



40 YANG BED OFFSET



34 CLOSE



41 ELLIOT



35 DIBBETS FRAME



42 CORTINA



36 CREED DINING



43 ASTON



37 CLOSE



44 DUCHAMP BRONZE



38 CREED LARGE



45 DIBBETS FRAME



39 CESAR



46 ANDERSEN BED



28 WARREN OUTDOOR



31 CESAR OUTDOOR



32 CORTINA OUTDOOR



47 CLOSE

DUPLEX SKY VILLA

2000
OCEAN
by Enrique Norten



1-2-3-4 LAWRENCE + LAWRENCE CLAN



15 DIBBETS RIM



5 SONG



16-17 CALDER BRONZE



6 JACQUES OTTOMAN



18 LOU



7 COLETTE



8 ELLIS



9 ELLIS GOLD



19 AMELIE DINING



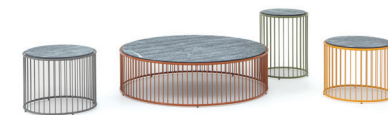
10 DIBBETS DIAGONAL



20 HALLEY OUTDOOR



11 JACQUES



21 CAULFIELD OUTDOOR



12 JACQUES



22 ASTON CORD OUTDOOR



13 CAULFIELD



14 NOOR



23 VAN DYCK OUTDOOR



24 BEDFORD BED



36 LAWRENCE BED



25 KIRK BENCH



38 FIL NOIR



26 LOU



37 LOU



27 HALLEY



39 AMELIE LOUNGE



40 DIAMOND



28 ASTON



29 KIRK



41 ANDERSEN BED



30 CESAR



42 WARREN



43 CLOSE



31 DIBBETS



44 CREED BED



32 CORTINA OUTDOOR



46 CLOSE



45 BRISLEY



33 CESAR OUTDOOR



34 FREEMAN



35 DUCHAMP BRONZE



47 DIBBETS FRAME



1-2-3-4-5-6 LAWRENCE + LAWRENCE CLAN



17 DIBBETS RIM

DUPLEX SKY VILLA POOL DECK

2000 OCEAN

by Enrique Norten



7 SONG



18 CALDER BRONZE



8 JACQUES OTTOMAN



19 SEYMOUR



9 KAY



10 ELLIS GOLD



20 FIL NOIR



11 COLETTE



12 NOOR



21 CATLIN



13 GRAN JACQUES



22 CREED



14 HALLEY



23 BELLAGIO LOUNGE



15 CAULFIELD



16 LOU



24 CALDER BRONZE SIDEBBOARD



26 LOU TABLE



35 DIBBETS TONNEAU



25 AMELIE



36 CARSON



27 CREED BED



37 AERON OUTDOOR



28 ELLIOTT



29 CLOSE



38 COLETTE OUTDOOR



30 ASHLEY



31 DIBBETS



39 CORTINA OUTDOOR



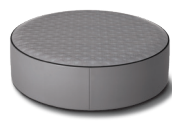
32 CATLIN



40 EVANS OUTDOOR



33 JOY JUT OUT



34 YANG



41 HALLEY OUTDOOR

Full Floor Penthouse
Floors 34—38

Interior
5,832 FT² / 541.8 M²

Exterior
949 FT² / 88.1 M²

Total
6,781 FT² / 630 M²

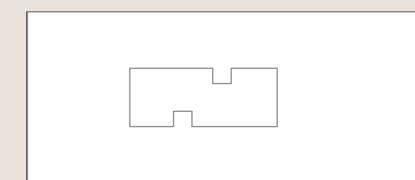
- Features
- 5 Bedrooms
 - 6 Bathrooms
 - Powder Room
 - Staff Quarters
 - East & West Terraces
 - Private Elevator Landing



INTRACOASTAL WATERWAY

ATLANTIC OCEAN

Keyplan



ORAL REPRESENTATIONS CANNOT BE RELIED UPON AS CORRECTLY STATING THE REPRESENTATIONS OF THE DEVELOPER. FOR CORRECT REPRESENTATIONS, REFERENCE SHOULD BE MADE TO THE DOCUMENTS REQUIRED BY SECTION 718.503, FLORIDA STATUTES, TO BE FURNISHED BY A DEVELOPER TO A BUYER OR LESSEE.

This offering is made only by the Prospectus for the Condominium and no statement should be relied upon if not made in the Prospectus. This is not intended to be an offer to sell nor a solicitation of offers to buy in any jurisdiction where prohibited by law, and your eligibility for purchase will depend upon your state of residency.

APPLICABLE TO NEW YORK RESIDENTS: This advertisement is not an offering. It is a solicitation of interest in the advertised property. No offering of the advertised units can be made until an offering plan is filed with the New York State Department of Law. This advertisement is made pursuant to Cooperative Policy Statement No. 1, issued by the New York State Department of Law, CP16-0047. Sponsor: 2000 Ocean Drive LLC, 2000 S. Ocean Drive, Hallandale Beach, Florida 33009. Stated square footages and dimensions are measured to the exterior boundaries of the exterior walls and the centerline of interior demising walls and in fact vary from the square footages and dimensions that would be determined by using the description and definition of the "Unit" set forth in the Declaration (which generally only includes the interior airspace between the perimeter walls and excludes all interior structural components and other common elements). The plans, specifications, terms, conditions and statements contained in this brochure are proposed only, and the Developer reserves the right to modify, revise or withdraw any or all of some in its sole discretion and without prior notice. They should not be relied upon as representations, express or implied, of the final detail of the residence. The developer expressly reserves the right to make modifications, revisions, and changes it deems desirable in its sole and absolute discretion. All depictions of furnishings, finishes, appliances, counters, walls, floor coverings and other matters of detail, including, without limitation, items of finish and decoration, are conceptual only and are not necessarily included in each Unit. Consult your Agreement and the Prospectus for the items included with the Unit. Equal Housing Opportunity.



Scale: 1/4 Inch = 1 Foot