



THE RITZ-CARLTON RESIDENCES

WEST PALM BEACH

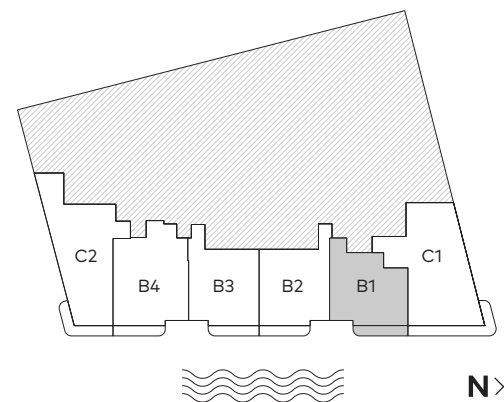
Residence B1

2 Bedrooms
2 Bathrooms
1 Powder Room

INTERIOR
1,874 SF

EXTERIOR
204 SF

TOTAL AREA
2,078 SF



1717 N Flagler Drive West Palm Beach, FL 33407



There are various methods for calculating the square footage of a Unit and depending on the method of calculation, the quoted square footage of a Unit in advertising materials may vary from the square footage of a Unit as described in the Prospectus and the Declaration. The dimensions of the Unit shown have been calculated from the exterior boundaries of the exterior walls to the centerline of interior demising walls, including common elements such as structural walls and other interior structural components of the building which method results in a calculation of square footage greater than if measured in other customary methods, such as from finished painted surface to finished painted surface as an example. All dimensions are approximate and may vary with actual construction. All floor plans are subject to change. The furnishings and décor illustrated are not placed in a manner intended to guaranty a particular use of the space and are not included with the purchase of the Unit. Consult the Developer's Prospectus for information regarding terms, conditions, the calculation of the Unit dimensions and to learn what is included with purchase. Marriott International, Inc. The Related Group, and BH Group are Licensees of the Developer. 1717 N Flagler Drive Venture, LLC Ritz-Carlton® is the registered mark of Marriott International, Inc. 2024© 1717 N Flagler Drive Venture, LLC. ®



THE RITZ-CARLTON RESIDENCES

WEST PALM BEACH

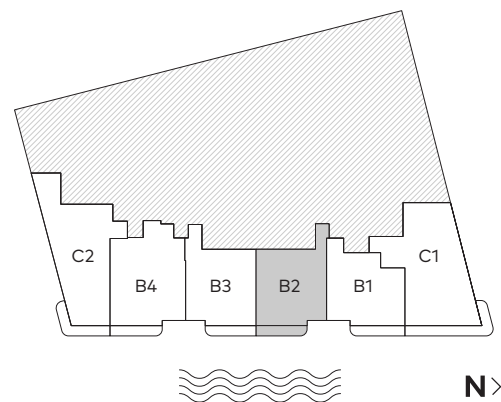
Residence B2

2 Bedrooms
2 Bathrooms
1 Powder Room

INTERIOR
1,929 SF

EXTERIOR
188.5 SF

TOTAL AREA
2,117.5 SF



1717 N Flagler Drive West Palm Beach, FL 33407



There are various methods for calculating the square footage of a Unit and depending on the method of calculation, the quoted square footage of a Unit in advertising materials may vary from the square footage of a Unit as described in the Prospectus and the Declaration. The dimensions of the Unit shown have been calculated from the exterior boundaries of the exterior walls to the centerline of interior demising walls, including common elements such as structural walls and other interior structural components of the building which method results in a calculation of square footage greater than if measured in other customary methods, such as from finished painted surface to finished painted surface as an example. All dimensions are approximate and may vary with actual construction. All floor plans are subject to change. The furnishings and décor illustrated are not placed in a manner intended to guaranty a particular use of the space and are not included with the purchase of the Unit. Consult the Developer's Prospectus for information regarding terms, conditions, the calculation of the Unit dimensions and to learn what is included with purchase. Marriott International, Inc. The Related Group, and BH Group are Licensors of the Developer. 1717 N Flagler Drive Venture, LLC Ritz-Carlton® is the registered mark of Marriott International, Inc. 2024© 1717 N Flagler Drive Venture, LLC. 🏠



THE RITZ-CARLTON RESIDENCES

WEST PALM BEACH

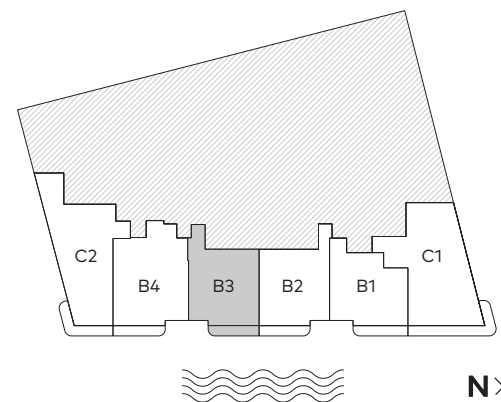
Residence B3

2 Bedrooms
2 Bathrooms
1 Powder Room

INTERIOR
1,939 SF

EXTERIOR
188.5 SF

TOTAL AREA
2,127.5 SF



1717 N Flagler Drive West Palm Beach, FL 33407



There are various methods for calculating the square footage of a Unit and depending on the method of calculation, the quoted square footage of a Unit in advertising materials may vary from the square footage of a Unit as described in the Prospectus and the Declaration. The dimensions of the Unit shown have been calculated from the exterior boundaries of the exterior walls to the centerline of interior demising walls, including common elements such as structural walls and other interior structural components of the building which method results in a calculation of square footage greater than if measured in other customary methods, such as from finished painted surface to finished painted surface as an example. All dimensions are approximate and may vary with actual construction. All floor plans are subject to change. The furnishings and décor illustrated are not placed in a manner intended to guaranty a particular use of the space and are not included with the purchase of the Unit. Consult the Developer's Prospectus for information regarding terms, conditions, the calculation of the Unit dimensions and to learn what is included with purchase. Marriott International, Inc. The Related Group, and BH Group are Licensees of the Developer. 1717 N Flagler Drive Venture, LLC Ritz-Carlton® is the registered mark of Marriott International, Inc. 2024© 1717 N Flagler Drive Venture, LLC. ®



THE RITZ-CARLTON RESIDENCES

WEST PALM BEACH

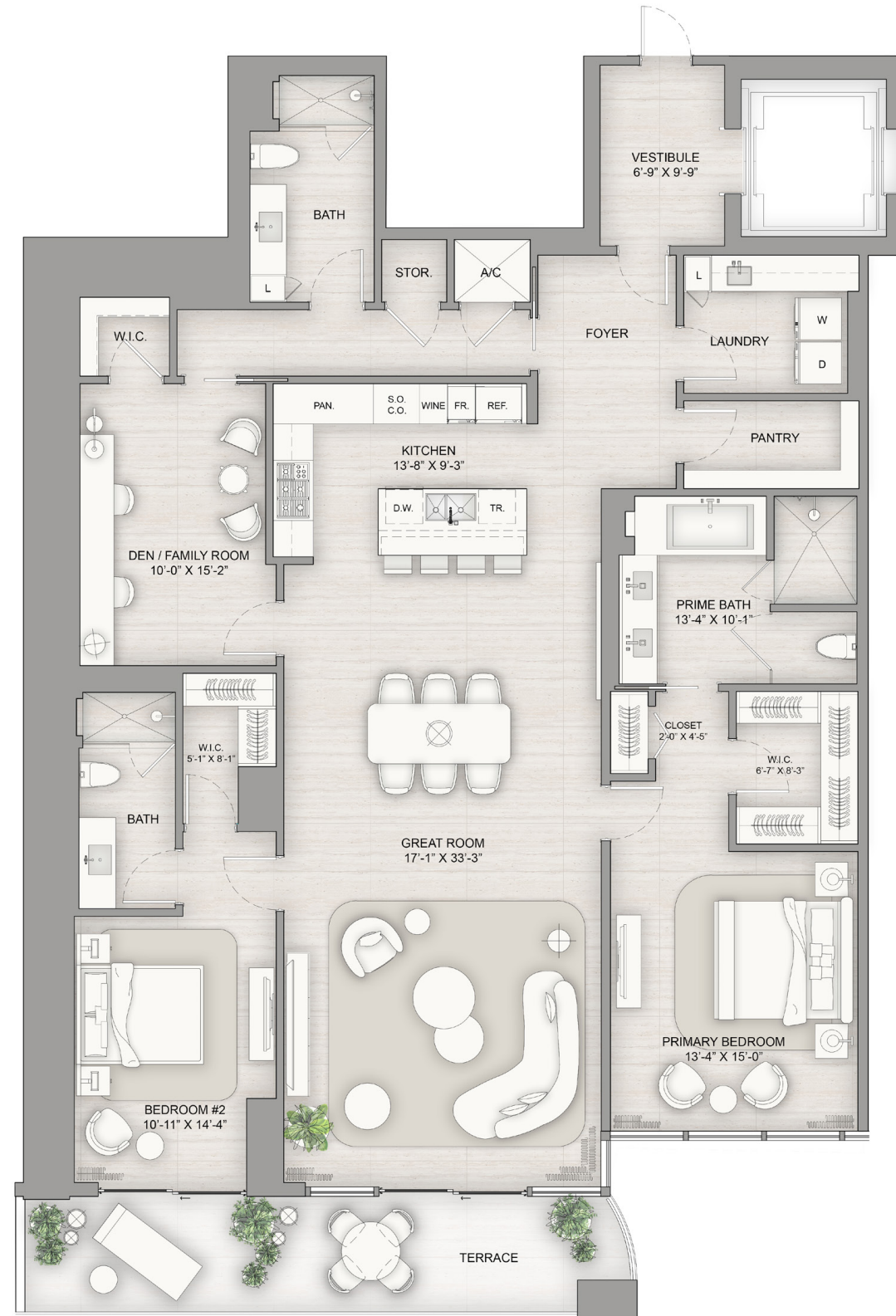
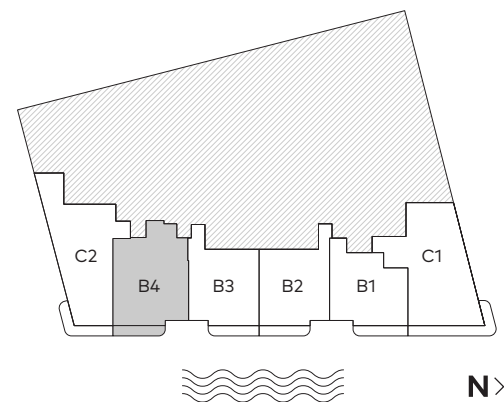
Residence B4

2 Bedrooms
3 Bathrooms

INTERIOR
2,350 SF

EXTERIOR
193 SF

TOTAL AREA
2,543 SF



1717 N Flagler Drive West Palm Beach, FL 33407



There are various methods for calculating the square footage of a Unit and depending on the method of calculation, the quoted square footage of a Unit in advertising materials may vary from the square footage of a Unit as described in the Prospectus and the Declaration. The dimensions of the Unit shown have been calculated from the exterior boundaries of the exterior walls to the centerline of interior demising walls, including common elements such as structural walls and other interior structural components of the building which method results in a calculation of square footage greater than if measured in other customary methods, such as from finished painted surface to finished painted surface as an example. All dimensions are approximate and may vary with actual construction. All floor plans are subject to change. The furnishings and décor illustrated are not placed in a manner intended to guaranty a particular use of the space and are not included with the purchase of the Unit. Consult the Developer's Prospectus for information regarding terms, conditions, the calculation of the Unit dimensions and to learn what is included with purchase. Marriott International, Inc. The Related Group, and BH Group are Licensees of the Developer. 1717 N Flagler Drive Venture, LLC Ritz-Carlton® is the registered mark of Marriott International, Inc. 2024© 1717 N Flagler Drive Venture, LLC. ®



THE RITZ-CARLTON RESIDENCES

WEST PALM BEACH

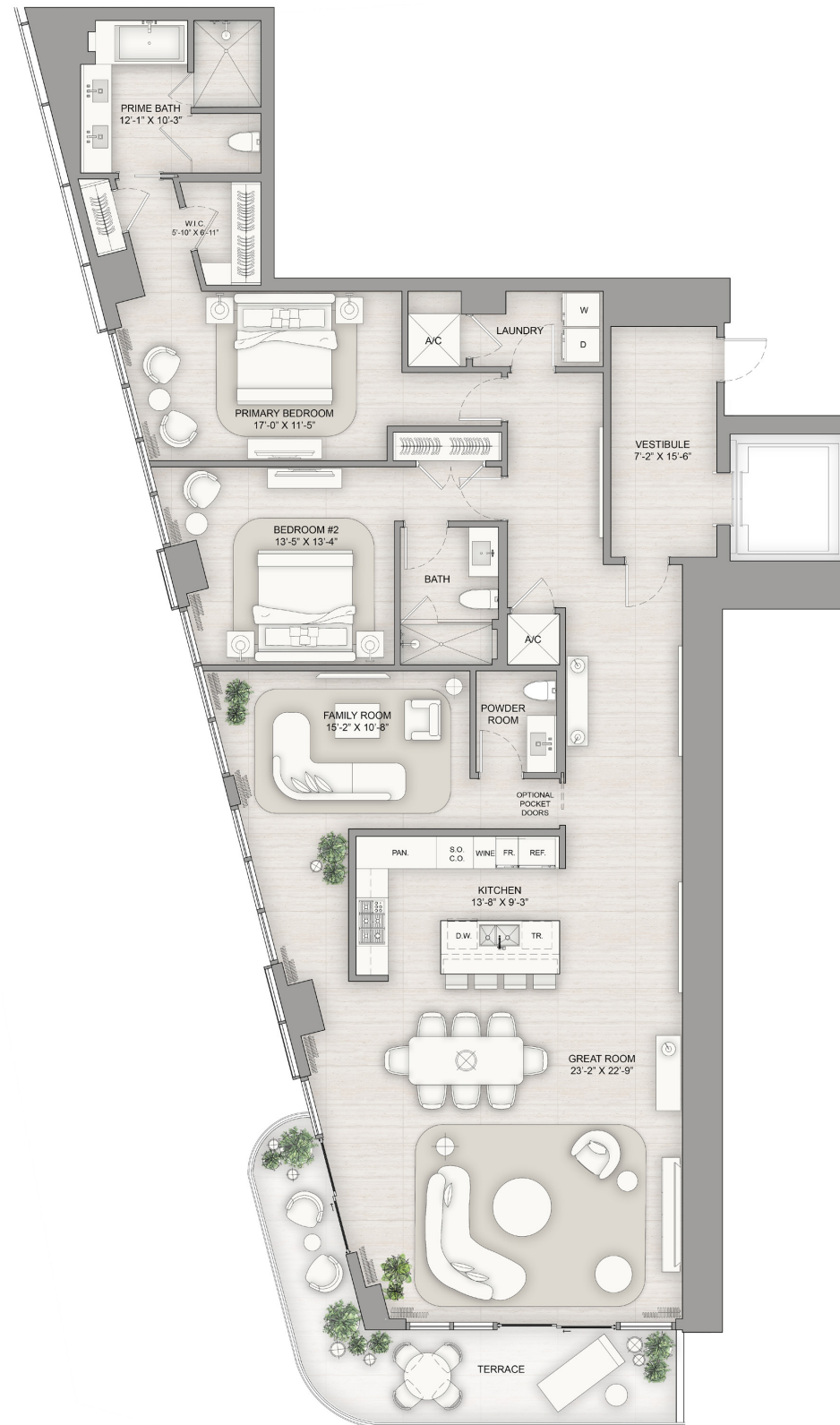
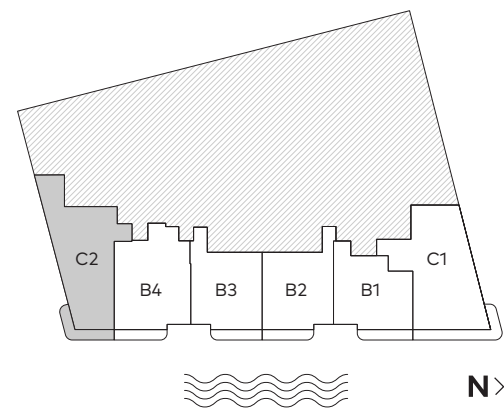
Residence C2

- 2 Bedrooms
- 2 Bathrooms
- 1 Powder Room

—
 INTERIOR
 2,510 SF

—
 EXTERIOR
 240 SF

—
 TOTAL AREA
 2,750 SF



1717 N Flagler Drive West Palm Beach, FL 33407



There are various methods for calculating the square footage of a Unit and depending on the method of calculation, the quoted square footage of a Unit in advertising materials may vary from the square footage of a Unit as described in the Prospectus and the Declaration. The dimensions of the Unit shown have been calculated from the exterior boundaries of the exterior walls to the centerline of interior demising walls, including common elements such as structural walls and other interior structural components of the building which method results in a calculation of square footage greater than if measured in other customary methods, such as from finished painted surface to finished painted surface as an example. All dimensions are approximate and may vary with actual construction. All floor plans are subject to change. The furnishings and décor illustrated are not placed in a manner intended to guaranty a particular use of the space and are not included with the purchase of the Unit. Consult the Developer's Prospectus for information regarding terms, conditions, the calculation of the Unit dimensions and to learn what is included with purchase. Marriott International, Inc. The Related Group, and BH Group are Licensees of the Developer. 1717 N Flagler Drive Venture, LLC Ritz-Carlton® is the registered mark of Marriott International, Inc. 2024© 1717 N Flagler Drive Venture, LLC. 🏠



THE RITZ-CARLTON RESIDENCES

WEST PALM BEACH

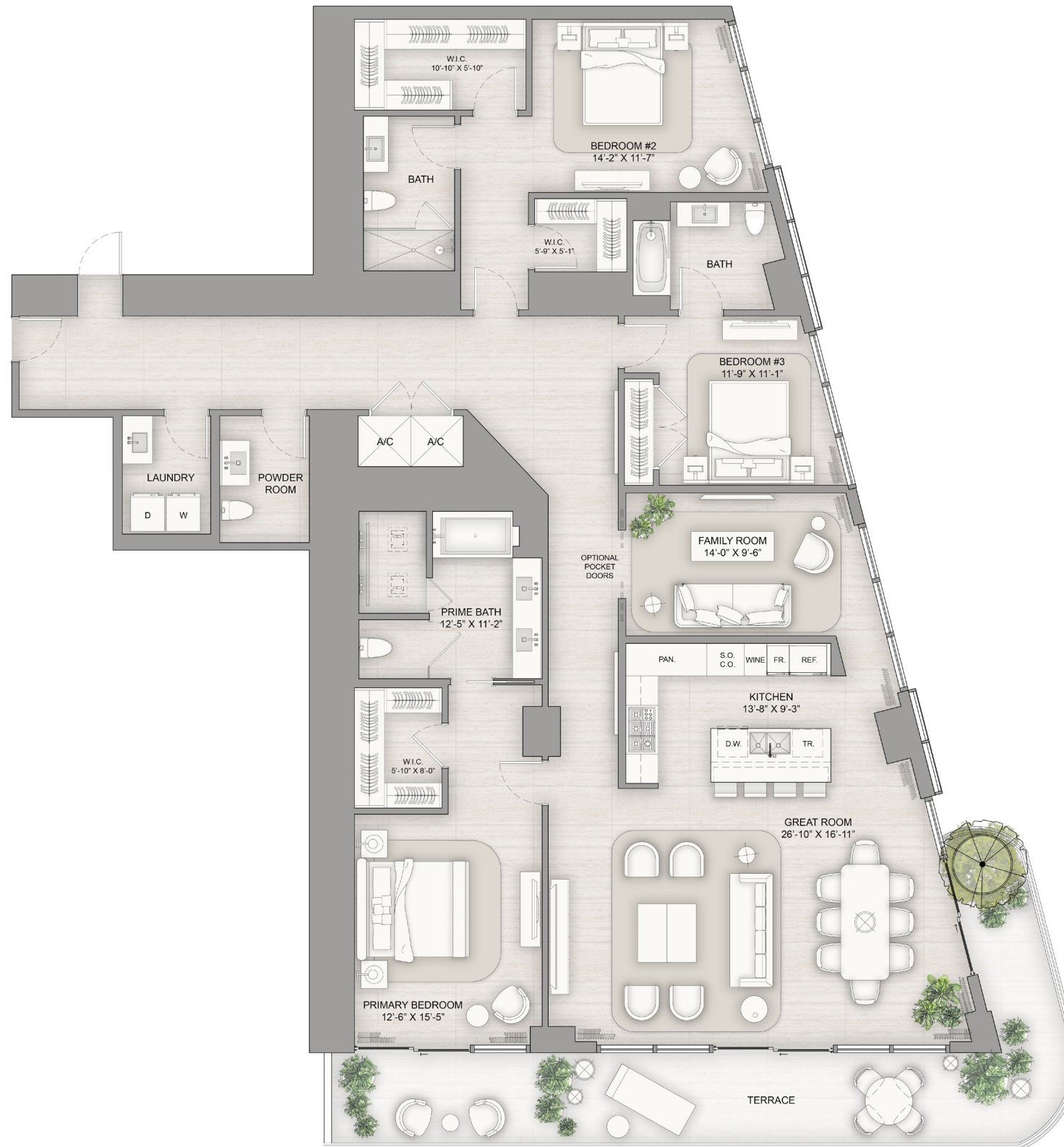
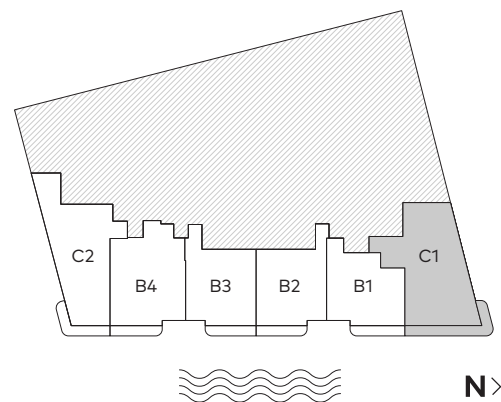
Residence C1

3 Bedrooms
3 Bathrooms
1 Powder Room

INTERIOR
2,777 SF

EXTERIOR
393 SF

TOTAL AREA
3,170 SF



1717 N Flagler Drive West Palm Beach, FL 33407



There are various methods for calculating the square footage of a Unit and depending on the method of calculation, the quoted square footage of a Unit in advertising materials may vary from the square footage of a Unit as described in the Prospectus and the Declaration. The dimensions of the Unit shown have been calculated from the exterior boundaries of the exterior walls to the centerline of interior demising walls, including common elements such as structural walls and other interior structural components of the building which method results in a calculation of square footage greater than if measured in other customary methods, such as from finished painted surface to finished painted surface as an example. All dimensions are approximate and may vary with actual construction. All floor plans are subject to change. The furnishings and décor illustrated are not placed in a manner intended to guaranty a particular use of the space and are not included with the purchase of the Unit. Consult the Developer's Prospectus for information regarding terms, conditions, the calculation of the Unit dimensions and to learn what is included with purchase. Marriott International, Inc. The Related Group, and BH Group are Licensees of the Developer. 1717 N Flagler Drive Venture, LLC Ritz-Carlton® is the registered mark of Marriott International, Inc. 2024© 1717 N Flagler Drive Venture, LLC. ®



THE RITZ-CARLTON RESIDENCES

WEST PALM BEACH

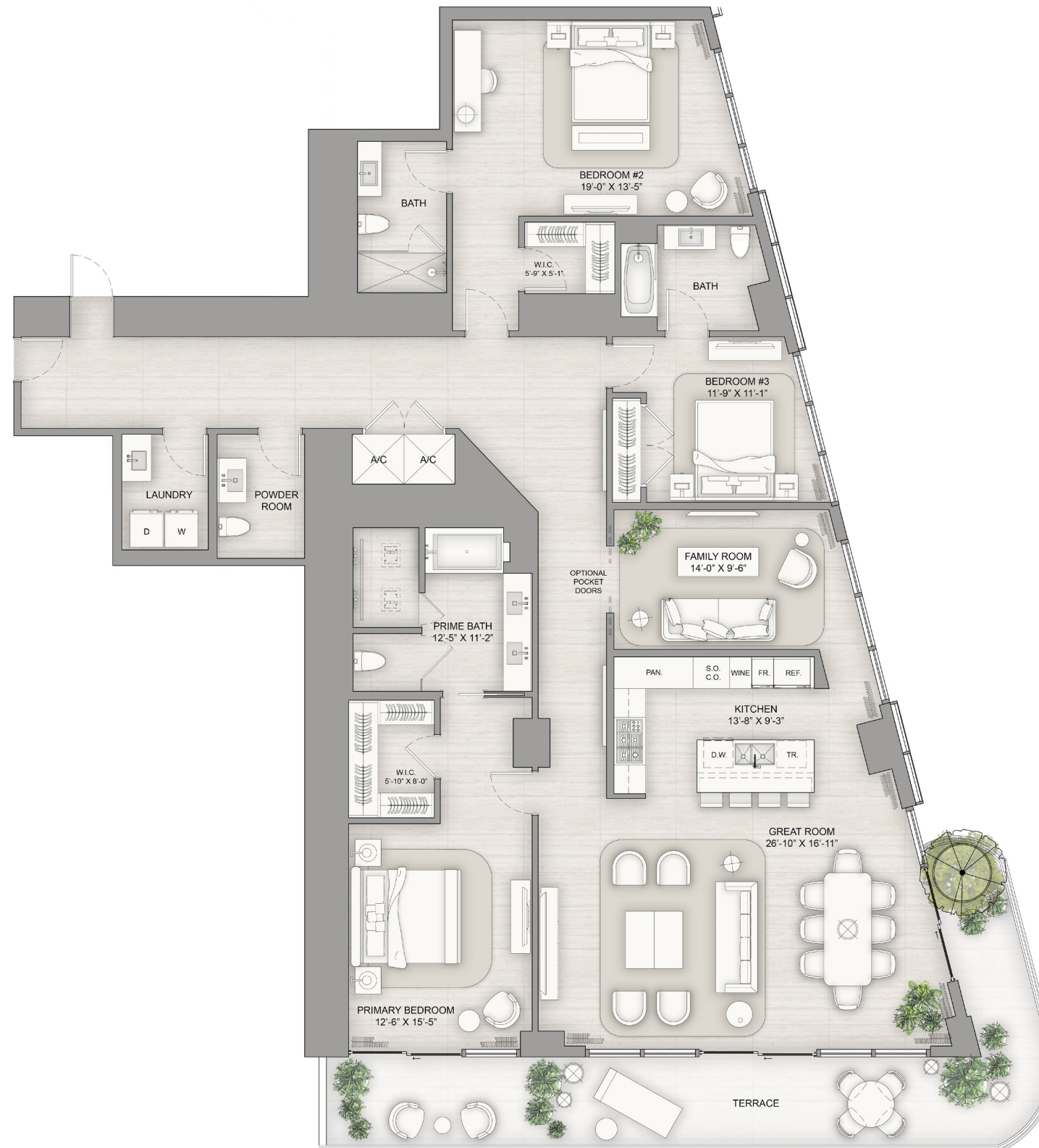
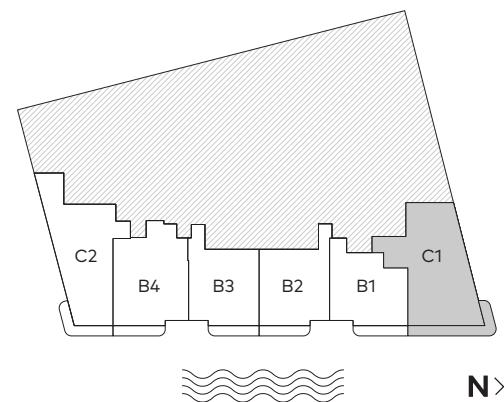
Residence C1.1

3 Bedrooms
3 Bathrooms
1 Powder Room

INTERIOR
2,771 SF

EXTERIOR
393 SF

TOTAL AREA
3,164 SF



1717 N Flagler Drive West Palm Beach, FL 33407



There are various methods for calculating the square footage of a Unit and depending on the method of calculation, the quoted square footage of a Unit in advertising materials may vary from the square footage of a Unit as described in the Prospectus and the Declaration. The dimensions of the Unit shown have been calculated from the exterior boundaries of the exterior walls to the centerline of interior demising walls, including common elements such as structural walls and other interior structural components of the building which method results in a calculation of square footage greater than if measured in other customary methods, such as from finished painted surface to finished painted surface as an example. All dimensions are approximate and may vary with actual construction. All floor plans are subject to change. The furnishings and décor illustrated are not placed in a manner intended to guaranty a particular use of the space and are not included with the purchase of the Unit. Consult the Developer's Prospectus for information regarding terms, conditions, the calculation of the Unit dimensions and to learn what is included with purchase. Marriott International, Inc. The Related Group, and BH Group are Licensees of the Developer. 1717 N Flagler Drive Venture, LLC Ritz-Carlton® is the registered mark of Marriott International, Inc. 2024© 1717 N Flagler Drive Venture, LLC. ®



THE RITZ-CARLTON RESIDENCES

WEST PALM BEACH

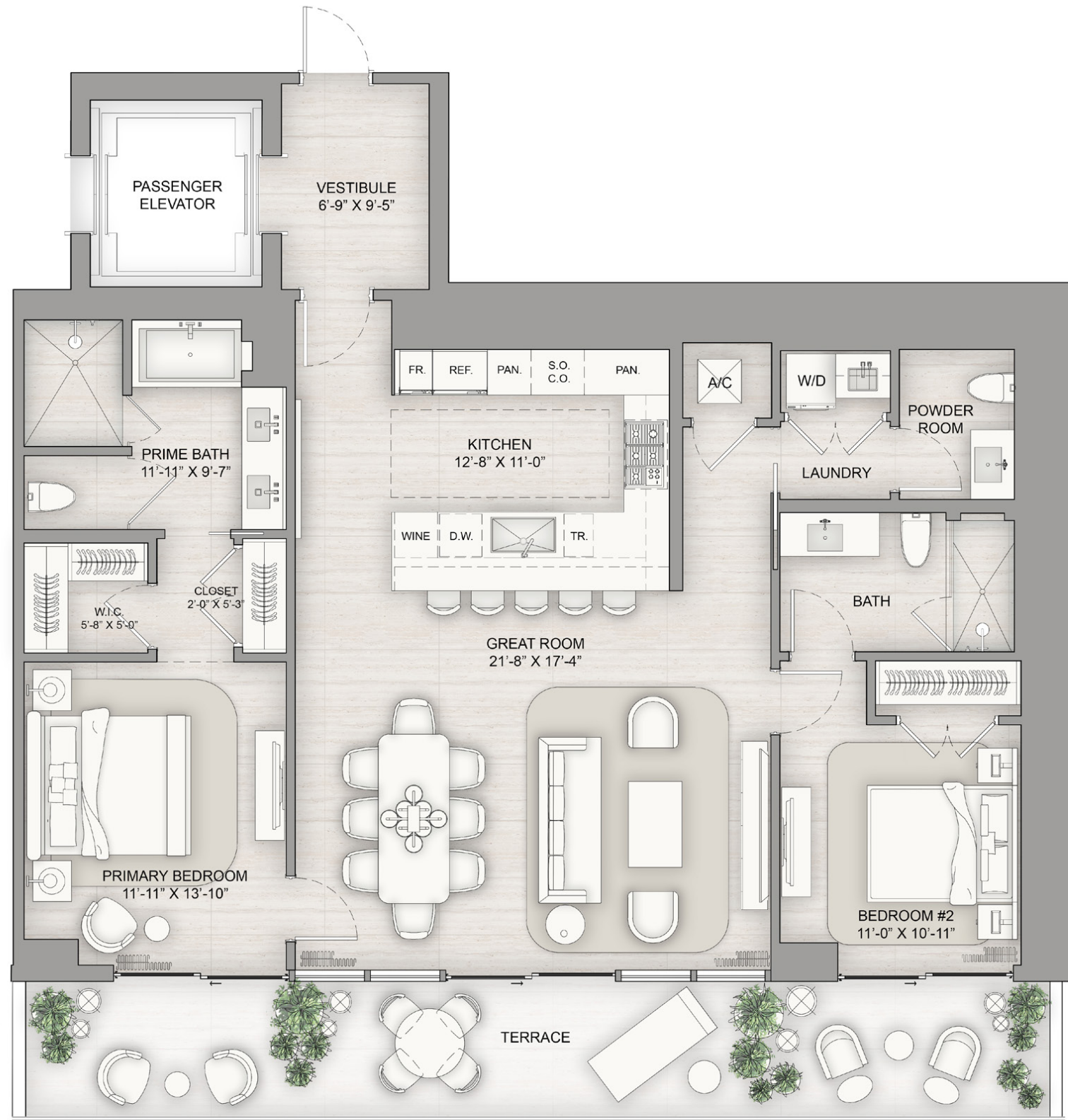
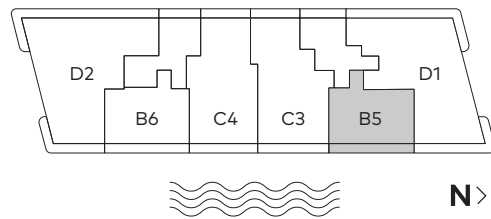
Residence B5

2 Bedrooms
2 Bathrooms
1 Powder Room

INTERIOR
1,532 SF

EXTERIOR
307 SF

TOTAL AREA
1,839 SF



1717 N Flagler Drive West Palm Beach, FL 33407



There are various methods for calculating the square footage of a Unit and depending on the method of calculation, the quoted square footage of a Unit in advertising materials may vary from the square footage of a Unit as described in the Prospectus and the Declaration. The dimensions of the Unit shown have been calculated from the exterior boundaries of the exterior walls to the centerline of interior demising walls, including common elements such as structural walls and other interior structural components of the building which method results in a calculation of square footage greater than if measured in other customary methods, such as from finished painted surface to finished painted surface as an example. All dimensions are approximate and may vary with actual construction. All floor plans are subject to change. The furnishings and décor illustrated are not placed in a manner intended to guaranty a particular use of the space and are not included with the purchase of the Unit. Consult the Developer's Prospectus for information regarding terms, conditions, the calculation of the Unit dimensions and to learn what is included with purchase. Marriott International, Inc. The Related Group, and BH Group are Licensees of the Developer. 1717 N Flagler Drive Venture, LLC Ritz-Carlton® is the registered mark of Marriott International, Inc. 2024© 1717 N Flagler Drive Venture, LLC. ®



THE RITZ-CARLTON RESIDENCES

WEST PALM BEACH

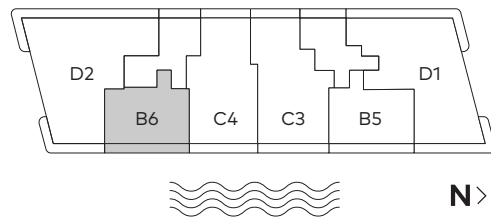
Residence B6

2 Bedrooms
2 Bathrooms
1 Powder Room

INTERIOR
1,566 SF

EXTERIOR
302 SF

TOTAL AREA
1,868 SF



1717 N Flagler Drive West Palm Beach, FL 33407



There are various methods for calculating the square footage of a Unit and depending on the method of calculation, the quoted square footage of a Unit in advertising materials may vary from the square footage of a Unit as described in the Prospectus and the Declaration. The dimensions of the Unit shown have been calculated from the exterior boundaries of the exterior walls to the centerline of interior demising walls, including common elements such as structural walls and other interior structural components of the building which method results in a calculation of square footage greater than if measured in other customary methods, such as from finished painted surface to finished painted surface as an example. All dimensions are approximate and may vary with actual construction. All floor plans are subject to change. The furnishings and décor illustrated are not placed in a manner intended to guaranty a particular use of the space and are not included with the purchase of the Unit. Consult the Developer's Prospectus for information regarding terms, conditions, the calculation of the Unit dimensions and to learn what is included with purchase. Marriott International, Inc. The Related Group, and BH Group are Licensees of the Developer. 1717 N Flagler Drive Venture, LLC Ritz-Carlton® is the registered mark of Marriott International, Inc. 2024© 1717 N Flagler Drive Venture, LLC. ®



THE RITZ-CARLTON RESIDENCES

WEST PALM BEACH

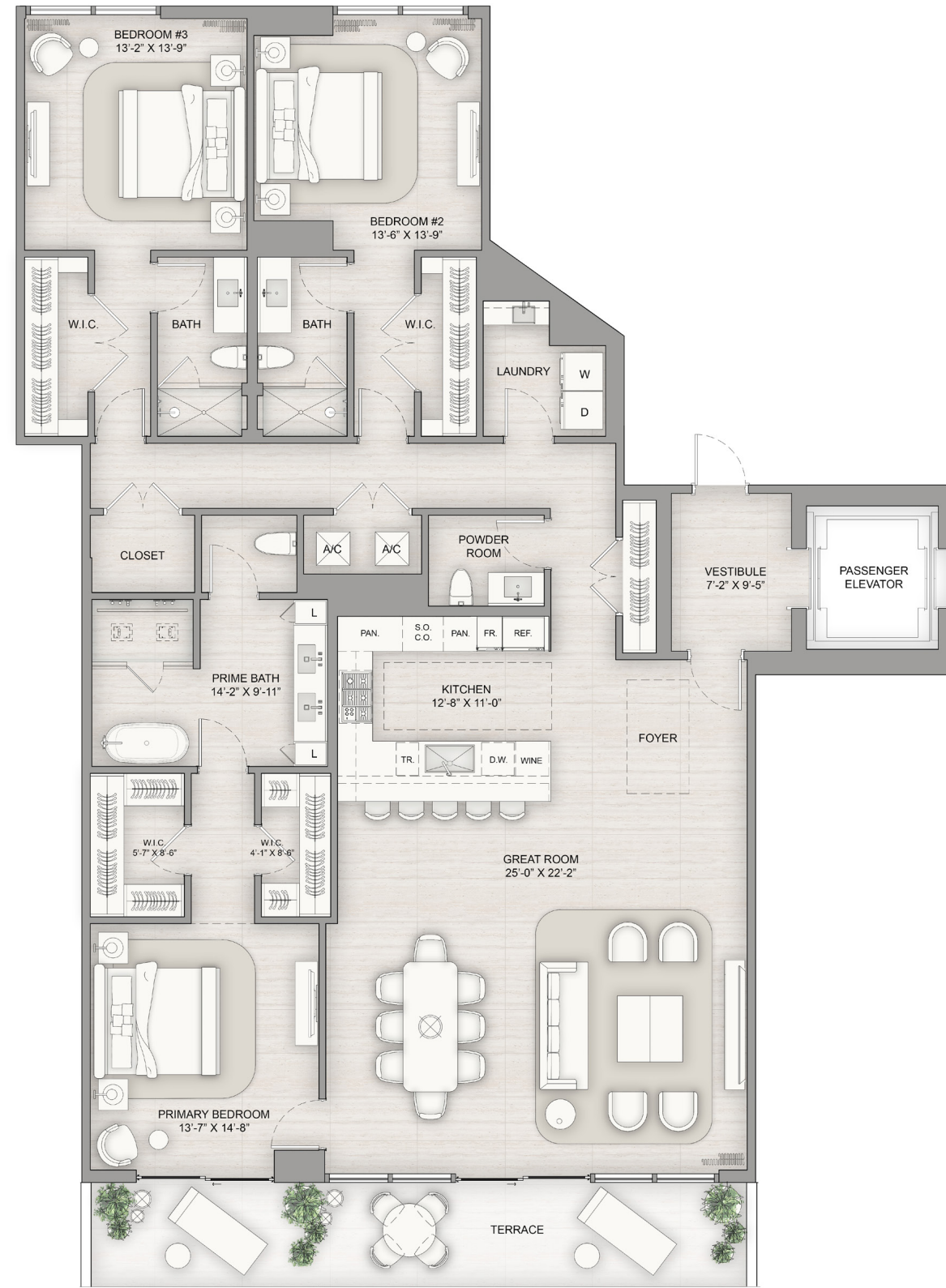
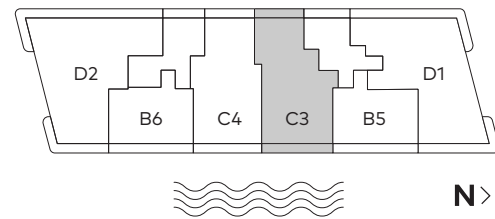
Residence C3

3 Bedrooms
3 Bathrooms
1 Powder Room

INTERIOR
2,541 SF

EXTERIOR
257 SF

TOTAL AREA
2,798 SF



1717 N Flagler Drive West Palm Beach, FL 33407



There are various methods for calculating the square footage of a Unit and depending on the method of calculation, the quoted square footage of a Unit in advertising materials may vary from the square footage of a Unit as described in the Prospectus and the Declaration. The dimensions of the Unit shown have been calculated from the exterior boundaries of the exterior walls to the centerline of interior demising walls, including common elements such as structural walls and other interior structural components of the building which method results in a calculation of square footage greater than if measured in other customary methods, such as from finished painted surface to finished painted surface as an example. All dimensions are approximate and may vary with actual construction. All floor plans are subject to change. The furnishings and décor illustrated are not placed in a manner intended to guaranty a particular use of the space and are not included with the purchase of the Unit. Consult the Developer's Prospectus for information regarding terms, conditions, the calculation of the Unit dimensions and to learn what is included with purchase. Marriott International, Inc. The Related Group, and BH Group are Licensees of the Developer. 1717 N Flagler Drive Venture, LLC Ritz-Carlton® is the registered mark of Marriott International, Inc. 2024© 1717 N Flagler Drive Venture, LLC. ®



THE RITZ-CARLTON RESIDENCES

WEST PALM BEACH

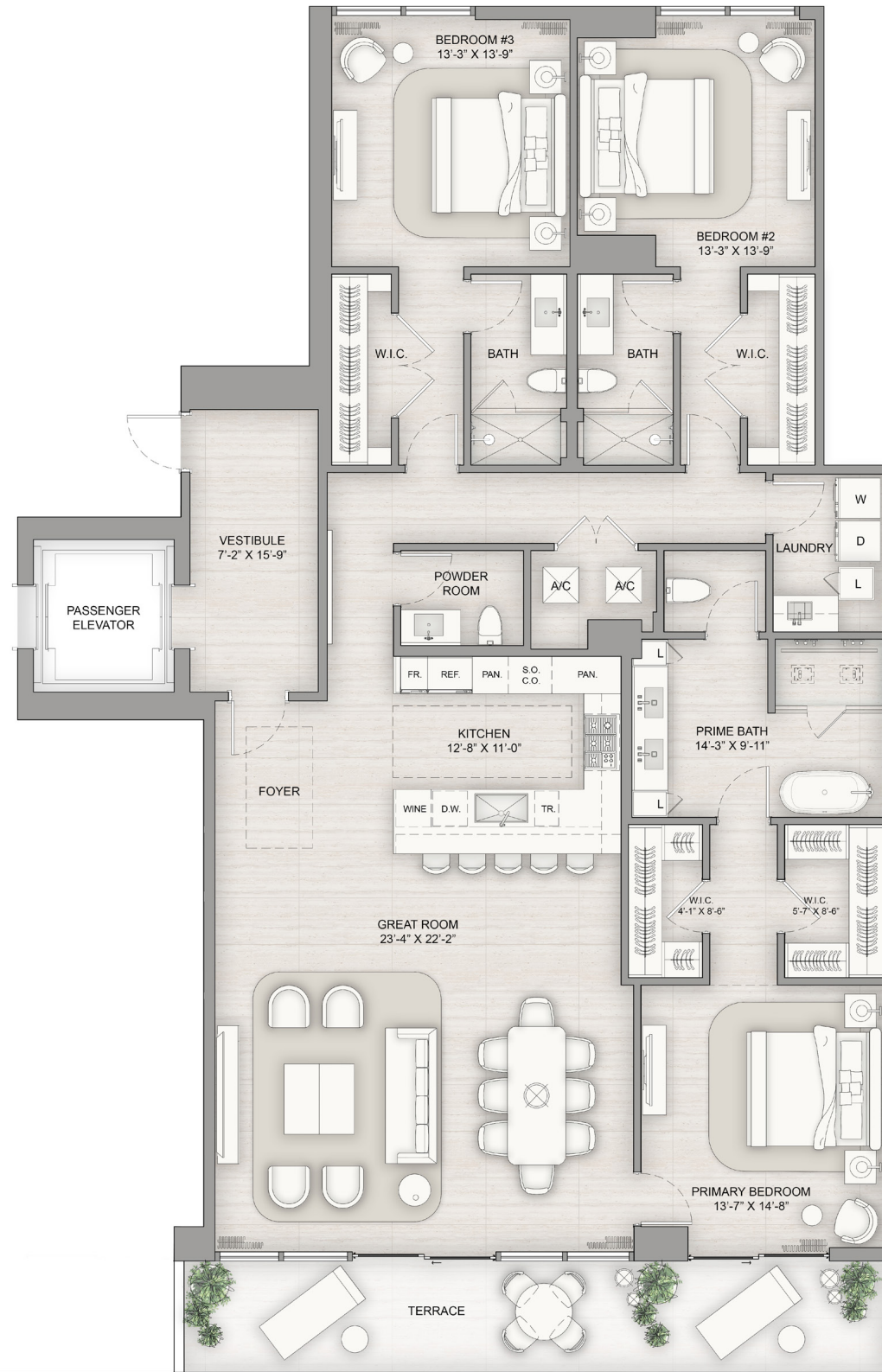
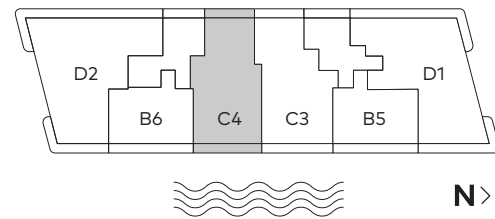
Residence C4

3 Bedrooms
3 Bathrooms
1 Powder Room

INTERIOR
2,449 SF

EXTERIOR
257 SF

TOTAL AREA
2,706 SF



1717 N Flagler Drive West Palm Beach, FL 33407



There are various methods for calculating the square footage of a Unit and depending on the method of calculation, the quoted square footage of a Unit in advertising materials may vary from the square footage of a Unit as described in the Prospectus and the Declaration. The dimensions of the Unit shown have been calculated from the exterior boundaries of the exterior walls to the centerline of interior demising walls, including common elements such as structural walls and other interior structural components of the building which method results in a calculation of square footage greater than if measured in other customary methods, such as from finished painted surface to finished painted surface as an example. All dimensions are approximate and may vary with actual construction. All floor plans are subject to change. The furnishings and décor illustrated are not placed in a manner intended to guaranty a particular use of the space and are not included with the purchase of the Unit. Consult the Developer's Prospectus for information regarding terms, conditions, the calculation of the Unit dimensions and to learn what is included with purchase. Marriott International, Inc. The Related Group, and BH Group are Licensees of the Developer. 1717 N Flagler Drive Venture, LLC Ritz-Carlton® is the registered mark of Marriott International, Inc. 2024© 1717 N Flagler Drive Venture, LLC. ®



THE RITZ-CARLTON RESIDENCES

WEST PALM BEACH

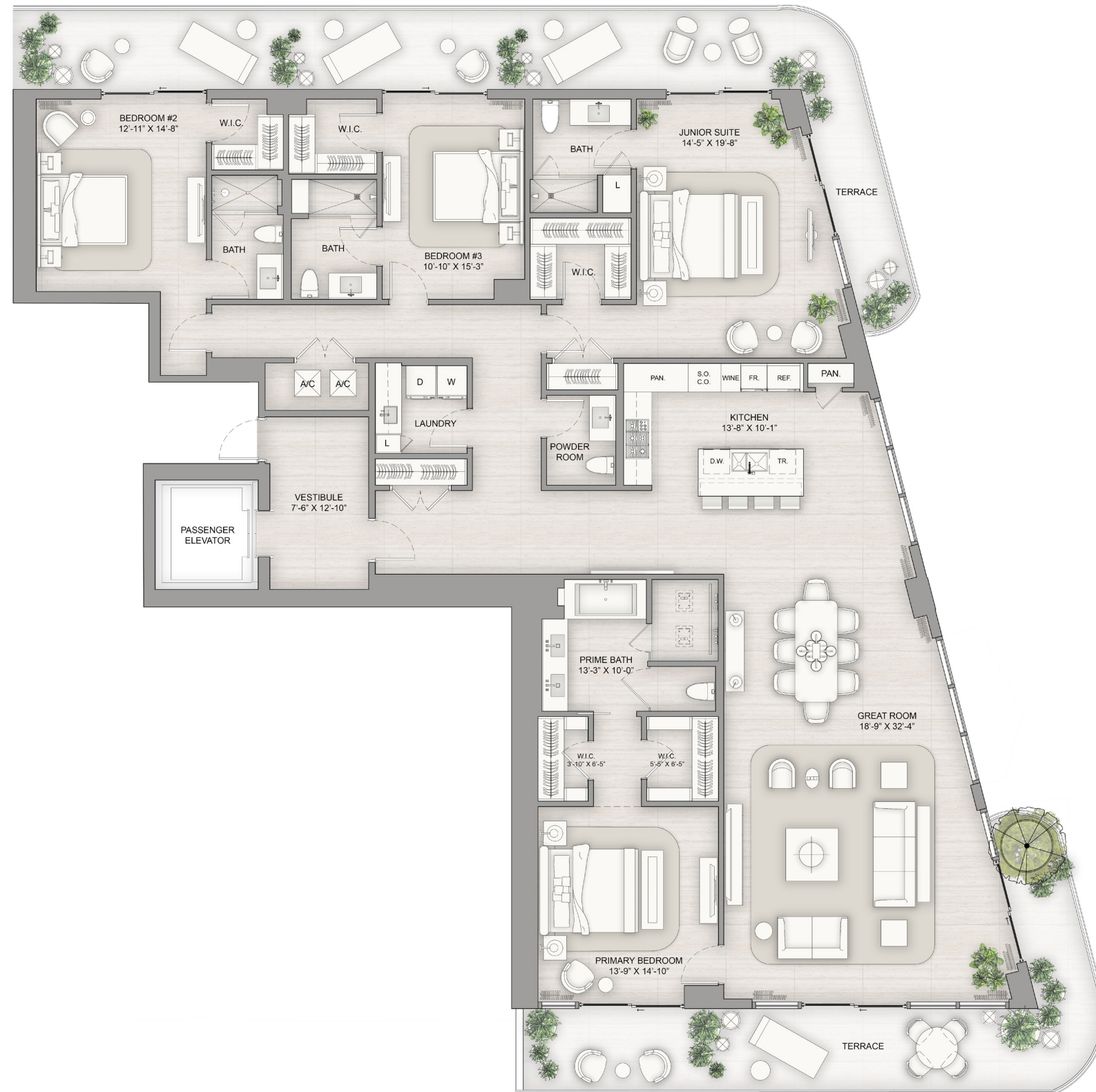
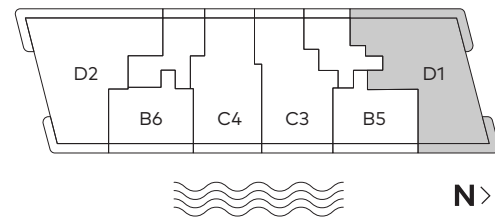
Residence D1

4 Bedrooms
4 Bathrooms
1 Powder Room

INTERIOR
3,244 SF

EXTERIOR
897 SF

TOTAL AREA
4,141 SF



1717 N Flagler Drive West Palm Beach, FL 33407



There are various methods for calculating the square footage of a Unit and depending on the method of calculation, the quoted square footage of a Unit in advertising materials may vary from the square footage of a Unit as described in the Prospectus and the Declaration. The dimensions of the Unit shown have been calculated from the exterior boundaries of the exterior walls to the centerline of interior demising walls, including common elements such as structural walls and other interior structural components of the building which method results in a calculation of square footage greater than if measured in other customary methods, such as from finished painted surface to finished painted surface as an example. All dimensions are approximate and may vary with actual construction. All floor plans are subject to change. The furnishings and décor illustrated are not placed in a manner intended to guaranty a particular use of the space and are not included with the purchase of the Unit. Consult the Developer's Prospectus for information regarding terms, conditions, the calculation of the Unit dimensions and to learn what is included with purchase. Marriott International, Inc. The Related Group, and BH Group are Licensees of the Developer. 1717 N Flagler Drive Venture, LLC Ritz-Carlton® is the registered mark of Marriott International, Inc. 2024© 1717 N Flagler Drive Venture, LLC. ®



THE RITZ-CARLTON RESIDENCES

WEST PALM BEACH

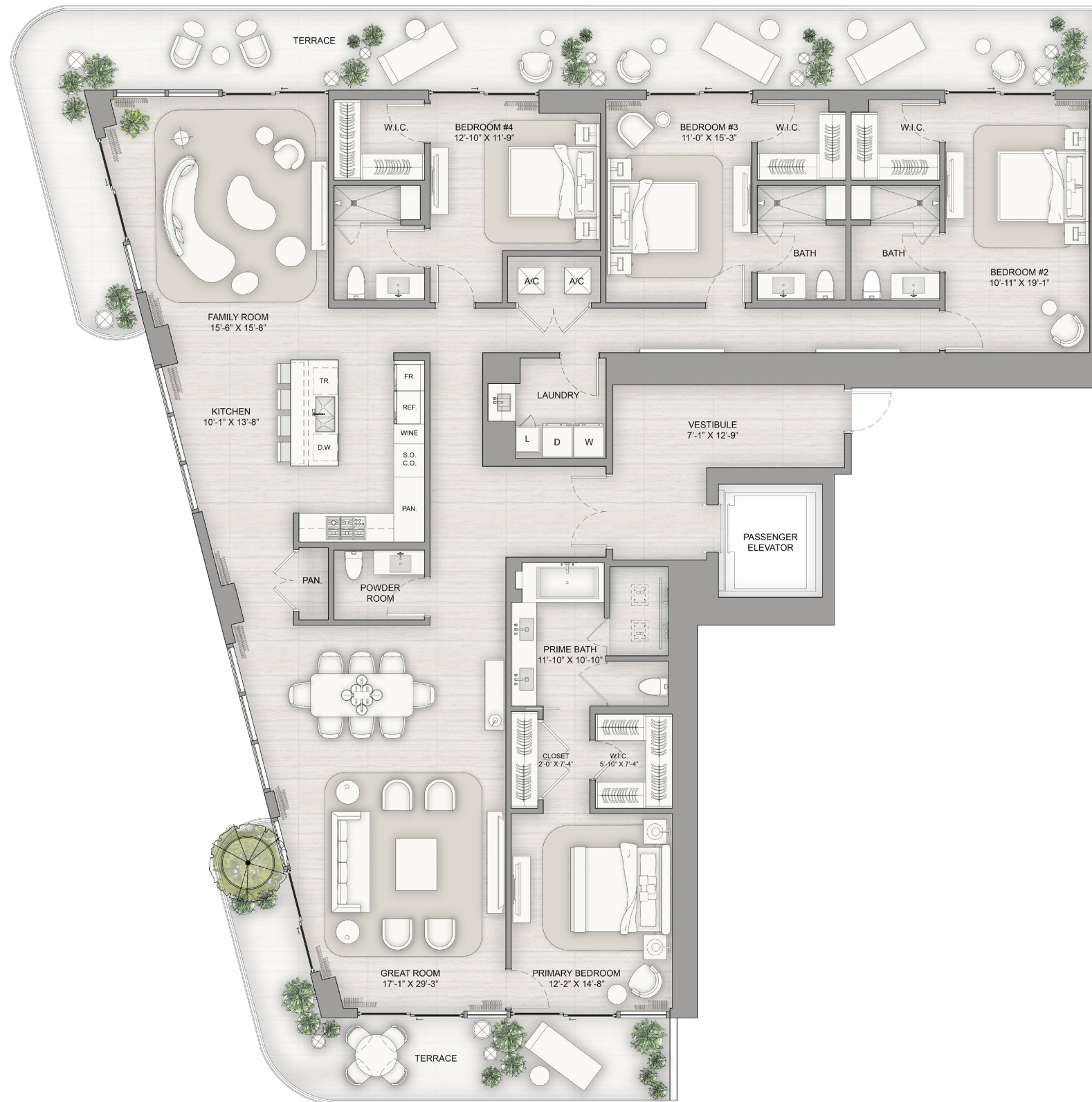
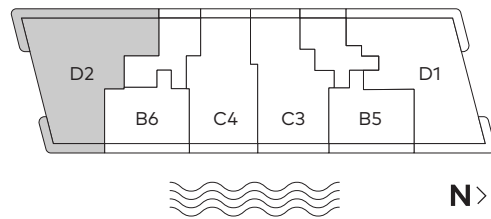
Residence D2

4 Bedrooms
4 Bathrooms
1 Powder Room

INTERIOR
3,331 SF

EXTERIOR
898 SF

TOTAL AREA
4,229 SF



1717 N Flagler Drive West Palm Beach, FL 33407



There are various methods for calculating the square footage of a Unit and depending on the method of calculation, the quoted square footage of a Unit in advertising materials may vary from the square footage of a Unit as described in the Prospectus and the Declaration. The dimensions of the Unit shown have been calculated from the exterior boundaries of the exterior walls to the centerline of interior demising walls, including common elements such as structural walls and other interior structural components of the building which method results in a calculation of square footage greater than if measured in other customary methods, such as from finished painted surface to finished painted surface as an example. All dimensions are approximate and may vary with actual construction. All floor plans are subject to change. The furnishings and décor illustrated are not placed in a manner intended to guaranty a particular use of the space and are not included with the purchase of the Unit. Consult the Developer's Prospectus for information regarding terms, conditions, the calculation of the Unit dimensions and to learn what is included with purchase. Marriott International, Inc. The Related Group, and BH Group are Licensees of the Developer. 1717 N Flagler Drive Venture, LLC Ritz-Carlton® is the registered mark of Marriott International, Inc. 2024© 1717 N Flagler Drive Venture, LLC. ®