



ÓNIX  
DELRAY BEACH

ONLY ONE LUXURY DESTINATION  
REMAINS IN DOWNTOWN DELRAY BEACH

ONLY ÓNIX

ONLY 26 CONTEMPORARY CONDOMINIUMS



The logo for Ónix Delray Beach features a stylized, golden, flame-like or leaf-like graphic above the word "ÓNIX" in a large, bold, black serif font. Below "ÓNIX" is the text "DELRAY BEACH" in a smaller, golden, sans-serif font.

# ÓNIX

DELRAY BEACH



A limited number of contemporary residences are available for those who have dreamed of a life in the sun and under the stars. At Ónix, you can have it all, from tranquil morning walks on Delray's scenic stretch of soft-sand beaches to exciting nights on the town, complete with world-class dining, live music, and an intriguing range of art installations.

Located just off the Avenue in beautiful, breezy Delray Beach, Ónix offers 26 spacious two- and three-bedroom condominiums ranging in size from 1,400 to 2,000 square feet.





## FIND YOUR PLACE IN THE SUN

### ÓNIX AMENITIES:

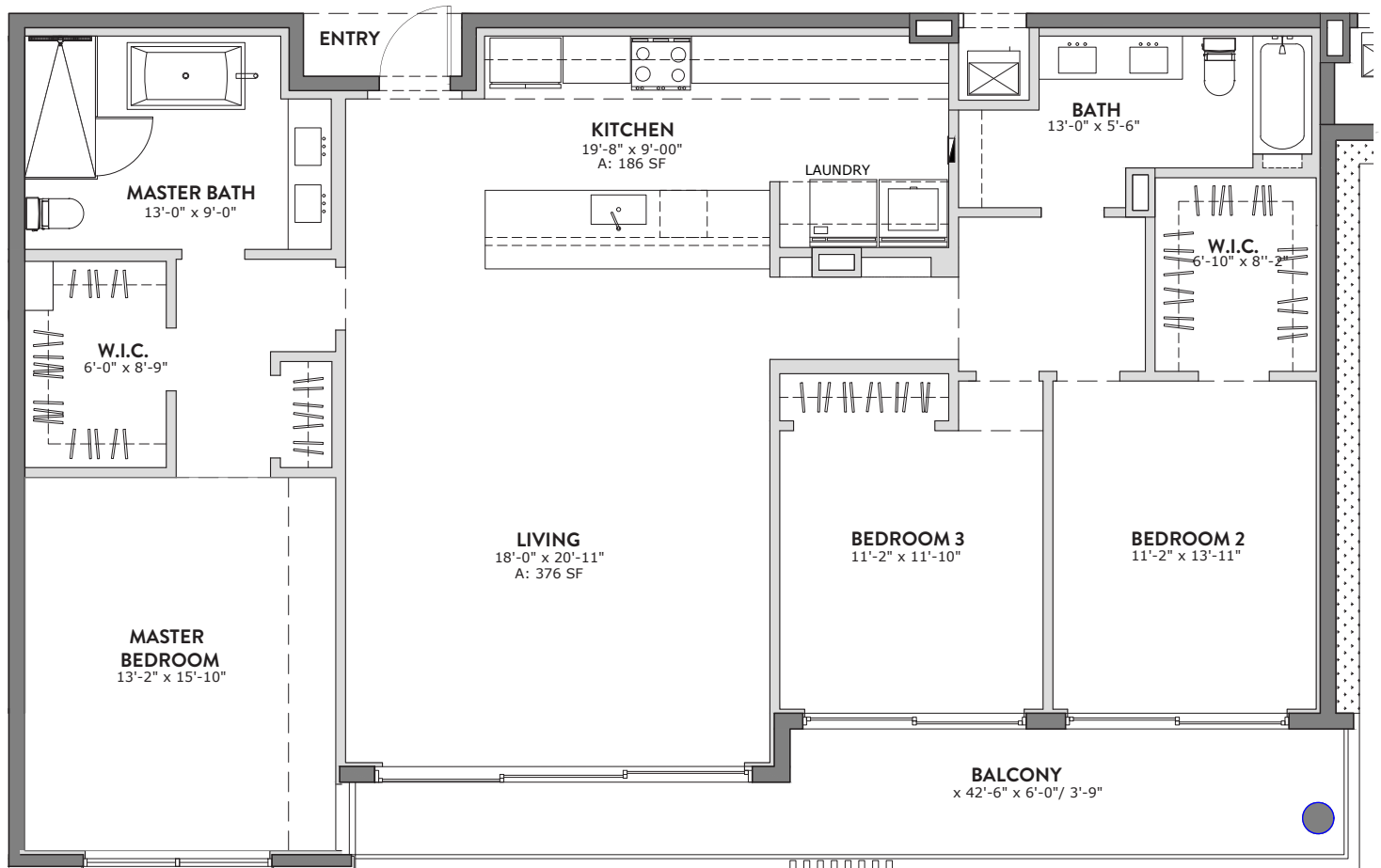
- Infinity pool, resort-style pool deck cabanas, outdoor seating with fire pits and a summer kitchen offering refrigeration, sink, grill and TV
- Club Room with prep kitchen, refrigeration, bar, high-top tables, living room-seating area, TV and coffee station, Wi-Fi accessibility, private workspace
- State-of-the-art fitness center overlooking the pool, advanced fitness equipment, TV and water/towel station
- Bike racks
- Pet-friendly cleanup stations



# THE AVENTURA

3 BEDROOM, 2 BATH  
1,993 TOTAL SQ FT - 1,803 AC SQ FT

CORNER



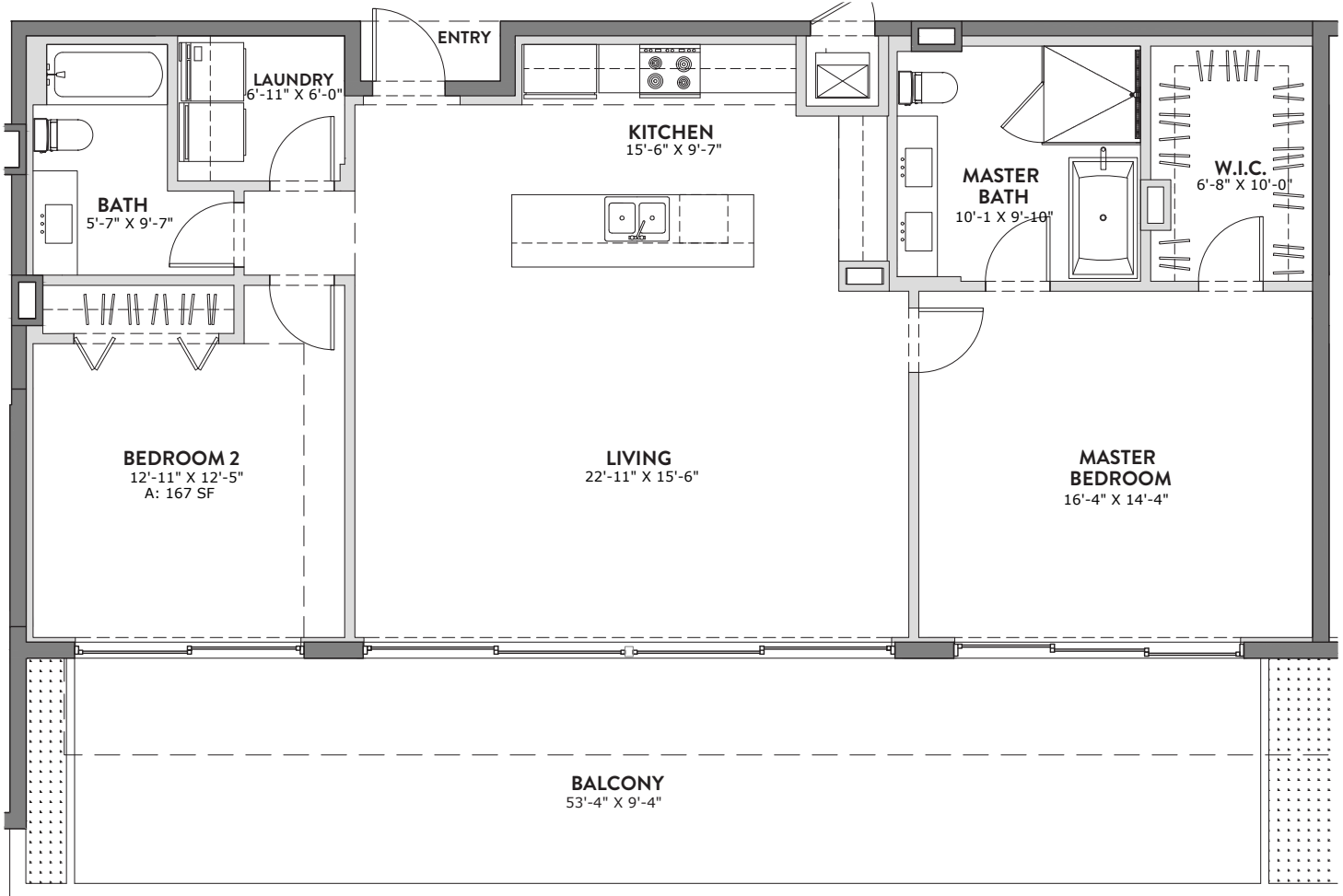
NOT ALL FLOORPLANS SHOWN.



PLANS AND ELEVATIONS ARE ARTIST'S RENDERINGS ONLY, MAY NOT ACCURATELY REPRESENT THE ACTUAL CONDITION OF A CONDOMINIUM AS CONSTRUCTED, AND MAY CONTAIN OPTIONS WHICH ARE NOT STANDARD ON ALL MODELS. BUILDER RESERVES THE RIGHT TO MAKE CHANGES TO THESE FLOOR PLANS, PRICES, SPECIFICATIONS, DIMENSIONS, DESIGNS AND ELEVATIONS WITHOUT PRIOR NOTICE. STATED DIMENSIONS AND SQUARE FOOTAGE ARE ESTIMATED AND SHOULD NOT BE USED AS REPRESENTATION OF THE HOME'S ACTUAL SIZE OR NET USABLE SQUARE FOOTAGE WHICH MAY BE LESS THAN THE ESTIMATED SQUARE FOOTAGE. ANY STATEMENT, VERBAL OR WRITTEN, REGARDING "UNDER AIR" OR "FINISHED AREA" OR ANY OTHER DESCRIPTION OR MODIFIER OF THE SQUARE FOOTAGE SIZE OF ANY HOME IS A SHORTHAND DESCRIPTION OF THE MANNER IN WHICH THE SQUARE FOOTAGE WAS ESTIMATED AND SHOULD NOT BE CONSTRUED TO INDICATE CERTAINTY. BALCONY SIZES MAY VARY FROM HOME TO HOME. THESE FLOORPLANS ARE SOLELY FOR ILLUSTRATIVE PURPOSES AND SHOULD NEVER BE RELIED UPON.

# THE BOCA RATON

2 BEDROOM, 2 BATH  
1,907 TOTAL SQ FT - 1,407 AC SQ FT



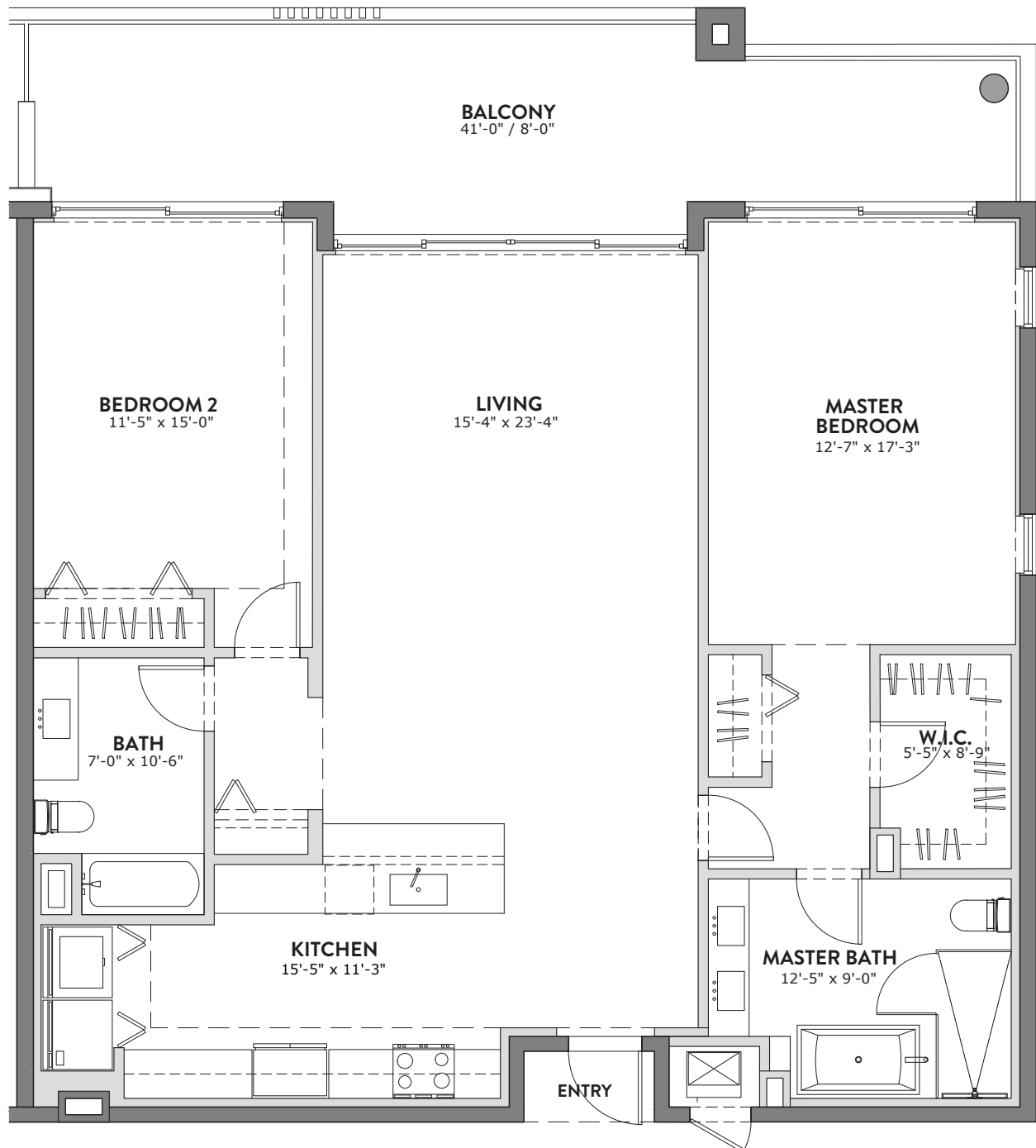
NOT ALL FLOORPLANS SHOWN.



PLANS AND ELEVATIONS ARE ARTIST'S RENDERINGS ONLY, MAY NOT ACCURATELY REPRESENT THE ACTUAL CONDITION OF A CONDOMINIUM AS CONSTRUCTED, AND MAY CONTAIN OPTIONS WHICH ARE NOT STANDARD ON ALL MODELS. BUILDER RESERVES THE RIGHT TO MAKE CHANGES TO THESE FLOOR PLANS, PRICES, SPECIFICATIONS, DIMENSIONS, DESIGNS AND ELEVATIONS WITHOUT PRIOR NOTICE. STATED DIMENSIONS AND SQUARE FOOTAGE ARE ESTIMATED AND SHOULD NOT BE USED AS REPRESENTATION OF THE HOME'S ACTUAL SIZE OR NET USABLE SQUARE FOOTAGE WHICH MAY BE LESS THAN THE ESTIMATED SQUARE FOOTAGE. ANY STATEMENT, VERBAL OR WRITTEN, REGARDING "UNDER AIR" OR "FINISHED AREA" OR ANY OTHER DESCRIPTION OR MODIFIER OF THE SQUARE FOOTAGE SIZE OF ANY HOME IS A SHORTHAND DESCRIPTION OF THE MANNER IN WHICH THE SQUARE FOOTAGE WAS ESTIMATED AND SHOULD NOT BE CONSTRUED TO INDICATE CERTAINTY. BALCONY SIZES MAY VARY FROM HOME TO HOME. THESE FLOORPLANS ARE SOLELY FOR ILLUSTRATIVE PURPOSES AND SHOULD NEVER BE RELIED UPON.

# THE CORAL GABLES

2 BEDROOM, 2 BATH  
1,844 TOTAL SQ FT - 1,514 AC SQ FT



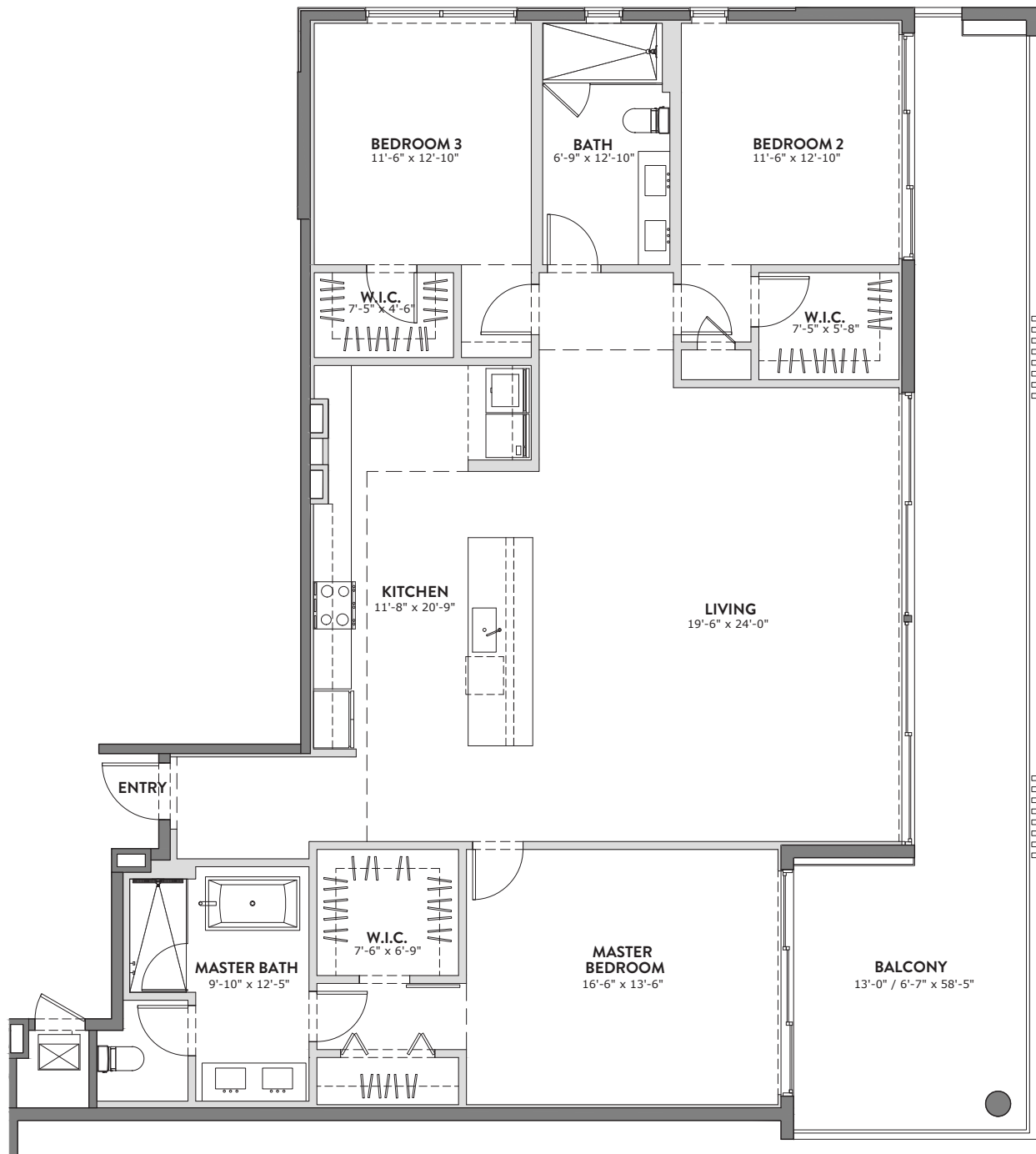
NOT ALL FLOORPLANS SHOWN.



PLANS AND ELEVATIONS ARE ARTIST'S RENDERINGS ONLY, MAY NOT ACCURATELY REPRESENT THE ACTUAL CONDITION OF A CONDOMINIUM AS CONSTRUCTED, AND MAY CONTAIN OPTIONS WHICH ARE NOT STANDARD ON ALL MODELS. BUILDER RESERVES THE RIGHT TO MAKE CHANGES TO THESE FLOOR PLANS, PRICES, SPECIFICATIONS, DIMENSIONS, DESIGNS AND ELEVATIONS WITHOUT PRIOR NOTICE. STATED DIMENSIONS AND SQUARE FOOTAGE ARE ESTIMATED AND SHOULD NOT BE USED AS REPRESENTATION OF THE HOME'S ACTUAL SIZE OR NET USABLE SQUARE FOOTAGE WHICH MAY BE LESS THAN THE ESTIMATED SQUARE FOOTAGE. ANY STATEMENT, VERBAL OR WRITTEN, REGARDING "UNDER AIR" OR "FINISHED AREA" OR ANY OTHER DESCRIPTION OR MODIFIER OF THE SQUARE FOOTAGE SIZE OF ANY HOME IS A SHORTHAND DESCRIPTION OF THE MANNER IN WHICH THE SQUARE FOOTAGE WAS ESTIMATED AND SHOULD NOT BE CONSTRUED TO INDICATE CERTAINTY. BALCONY SIZES MAY VARY FROM HOME TO HOME. THESE FLOORPLANS ARE SOLELY FOR ILLUSTRATIVE PURPOSES AND SHOULD NEVER BE RELIED UPON.

# THE DELRAY BEACH

3 BEDROOM, 2 BATH  
2,200 TOTAL SQ FT - 2,010 AC SQ FT



NOT ALL FLOORPLANS SHOWN.



PLANS AND ELEVATIONS ARE ARTIST'S RENDERINGS ONLY, MAY NOT ACCURATELY REPRESENT THE ACTUAL CONDITION OF A CONDOMINIUM AS CONSTRUCTED, AND MAY CONTAIN OPTIONS WHICH ARE NOT STANDARD ON ALL MODELS. BUILDER RESERVES THE RIGHT TO MAKE CHANGES TO THESE FLOOR PLANS, PRICES, SPECIFICATIONS, DIMENSIONS, DESIGNS AND ELEVATIONS WITHOUT PRIOR NOTICE. STATED DIMENSIONS AND SQUARE FOOTAGE ARE ESTIMATED AND SHOULD NOT BE USED AS REPRESENTATION OF THE HOME'S ACTUAL SIZE OR NET USABLE SQUARE FOOTAGE WHICH MAY BE LESS THAN THE ESTIMATED SQUARE FOOTAGE. ANY STATEMENT, VERBAL OR WRITTEN, REGARDING "UNDER AIR" OR "FINISHED AREA" OR ANY OTHER DESCRIPTION OR MODIFIER OF THE SQUARE FOOTAGE SIZE OF ANY HOME IS A SHORTHAND DESCRIPTION OF THE MANNER IN WHICH THE SQUARE FOOTAGE WAS ESTIMATED AND SHOULD NOT BE CONSTRUED TO INDICATE CERTAINTY. BALCONY SIZES MAY VARY FROM HOME TO HOME. THESE FLOORPLANS ARE SOLELY FOR ILLUSTRATIVE PURPOSES AND SHOULD NEVER BE RELIED UPON.



MOMENTS FROM THE BEACH AND JUST STEPS  
AWAY FROM BUSTLING ATLANTIC AVENUE

Located 3 blocks South of East Atlantic Avenue on 5th Avenue (US1)  
318 South East 5th Avenue - Delray Beach, Florida 33483

1112 Development



JILLIAN CZYZ  
INTERIOR DESIGN + STYLING